

Flower Festival
Weekend
25th - 27th June
Linton

Over 2,350 copies
distributed
free in Linton,
Hildersham,
Hadstock &
Bartlow

THE LINTON NEWS

June
2010
Vol. 24 N° 3
Publication date
Monday 7th June

E & E PLUMRIDGE
Design & Print
41 High Street
Linton
01223 891407

Established 1987

www.linton.info e-mail lneditor@linton.info

14 ducklings rescued from a drain

ONE afternoon recently I was just about to step out of the door and walk to see a friend, when I had a phone call telling me that 14 baby ducklings had been found in a drain.

The ducklings were taken out of the drain, mummy duck feeling much happier (she was too fat to fall down the drain). However, not doing themselves any favours, they decided to go into someone's garden...it was the next door neighbour's, it's OK. Anyway...we chased the ducklings around the garden, tried to compromise with mummy duck, got hissed at and gave up! She refused to get in the bowl of water or in the boot of a car, caused a big fuss and got all silly about the matter.

We decided to walk across the road, we were in Coles Lane at the time, with the 14 ducklings in a large bowl of water, and the mummy duck following. Eventually we managed to get them all back to the river safely.

Nicole Tweed



A leap of faith: mother duck and her 14 babies about to take the plunge

Picture by
Nicole Tweed

From The Bridge to the river

ON Sunday 16th May we left Linton later than normal (11.30am) and several members brought their spouses. For a change we had decided to make the away days into more of a social gathering and we had booked a very long table for lunch at The Bridge in Waterbeach. The food was so good and most of us were so satisfied that we found it hard to go outside again, but we needed to use up a few calories so the group split into two to tackle the River Cam from two different directions.

As the weather was fabulous there were a lot of other walkers (with and without dogs) and many people on bicycles (with and without bells). The stretch of water going south of the pub towards Cambridge was very quiet, so more birds were encountered here, both on the water mute swan, moorhen, tern, mallard and ducklings,



Elegance personified: a magnificent swan

Picture by Tracey Wilson

etc and hovering overhead us, kestrel and cormorant. The two hardest souls in our group reached the lock, where they saw numerous Oxfam walkers heading for Milton Country Park-what a beautiful day they had for fund-raising.

In the other direction towards Ely the river is livelier, with human traffic on the river in houseboats and pleasure craft, but not so much wildlife (this is where all the boathouses and boat clubs are situated).

Our next club night is on Monday 7th June in the Library building, when we will have a digital photography workshop, including instruction on the use of the flickr website. There will be a short fun quiz and the theme for members' photos is food. The awaydays for June are Cambridge Colleges on Sunday 13th June and Beth Chatto's Garden on Wednesday 16th - details on the website www.lintoncameraclub.org.uk Tracey Wilson 891988

Hearing dogs for the deaf



Hearing Dogs for Deaf People

THE local branch of Hearing Dogs for Deaf People has now been in existence for just over a year. Due to job relocation the inaugural branch organiser, Sandra Mace, is unable to continue in post and I have recently agreed to take up the challenge of moving the branch forward. As a branch our objectives are to raise money for the charity (which receives no government funding whatsoever) and to raise awareness of the work of Hearing Dogs for Deaf People.

There are many ways in which we can come into local communities and raise awareness; equally there are many ways that you, either as individuals, community groups or local businesses can help us. For example, we can supply speakers for schools, cub,

scout, brownie and guide groups, which can help with young people's perception of disability and ways of overcoming problems that are faced on a regular basis. We can also supply speakers for local groups such as WIs, Rotary clubs etc and also for corporate events.

You can help us in many ways, for example you could join our small committee of volunteers who meet on a monthly basis. If committee work is not your cup of tea, would you be able to spare a couple of hours on an ad hoc basis to help us?

I am really keen to build up a database of people who are willing to help on an occasional basis - this could be by holding your own fundraising event such as Paws for Coffee (we can provide support materials), manning a stall for a couple of hours, donating items for tombolas/raffles to help raise money locally, or by selling

raffle tickets for one of our National campaigns - all offers of help will be warmly welcomed. Also, if you are planning a local event where we could attend with our information leaflets and merchandise, please let us know.

Currently we are in the early stages of planning a sponsored dog walk, which will be held in Milton Country Park in October. If you would like to help us make this event a huge success please let us know as we will need helpers on the day. Further details of the dog walk will be sent out later in the summer.

If you have questions about the work of Hearing Dogs for Deaf People or would like to offer to help please do not hesitate to contact me.

Jenny Parker
Branch Organiser
01223 833562 (evenings)
jennifer.parker5@btopen-
world.com

Another new look from Co-op



The clear windows throw natural light on the new counter as Claire Buckle serves customer Isobel Thomson

Picture by Roger Lapwood

to stock customers' special requests. There is also a wider selection of fresh meat and produce. Mr Nichols said that Linton is one of the most profitable stores in the region and is well used by the community, which is why the second refurbishment in three years was affordable. He said that clearing the windows, thus letting in the maximum natural light has made the store look much bigger.

Installing the new counter and moving the kiosk for cigarettes and spirits has made way for a new line. It is expected the Co-op will soon receive a licence to become another village outlet for Lotto and other national lottery tickets.

Kate France

Dangerous Dad's cycle for charity

ON Saturday 15th May 2010, 11 riders took part in a charity ride to raise funds for Linton Granta and Chestnuts Playgroups.

The aim of the 30 mile route was to avoid cycling on roads wherever possible by taking advantage of the wonderful network of bridleways that cover South Cambridgeshire and North Essex. After starting in Linton at 1pm, the riders headed out for Ashdon, via Horseheath and Bartlow.

After a brief stop in Ashdon to repair a couple of minor mechanical problems, the riders headed East to Stocking Green before looping back to Saffron Walden. The final returned to Linton

via Gt Chesterford and Hadstock, with a brief stop at the Kings Head in Hadstock.

The riders would like to thank all the sponsors for their generous donations and in particular the Kings Head, Hadstock. Their target is £1000, and although they haven't reached this, the money is still coming in. If people would like to donate they can email camecityandy@googlemail.com

Andy Morris



Dangerous Dad's are doing it for the kids

Picture by Roger Lapwood

Too good for jumble ...

New items this month include a snooker table and accessories for an up to 14-year-old, a solid pine cabin bed with shelving unit (to be reassembled) and a full size wooden cot with drop-down side. The Hinari Lifestyle compact mini washing machine which stands on the worktop and fits onto hot and cold taps, the two smart stools, 2ft high with wickerwork seats suitable for plant stands and the Logitech keyboard are still available.

An electric cooker raised £15 for Addenbrooke's oncology unit.

To buy any of the above or to offer an item to profit a charity, please phone Kate France 891602 or email katefrance@linton48.freemove.co.uk

NB: The donor chooses the charity to receive the money.

Apologies

WE apologise to Mrs Joanne Griffiths for omitting her name from the caption to the photograph showing her with her husband, the Rector of St Mary's, on last month's front page, article entitled Are you listening?

Editor

South Cambs tree officers champion community orchards

TREE wardens attended a conference in Birmingham on how trees can help to improve our environment. The meeting was part of the 20th anniversary celebrations for the Tree Council's Tree Warden Scheme with presentations from widely different urban networks which are part of a project to extend tree warden activities into urban areas. There was also a presentation on how street trees and green spaces can help urban areas adapt to possible changes in climate.

The day ended with a general discussion involving delegates representing local tree warden networks across England and Wales and from other Tree Council member organisations. Roz Richardson and Andrew Grimmer, SCDC Tree and Landscape Officers, and Enid Bald of Linton parish council, attended for this area.

The Tree Council launched the national Tree Warden scheme in 1990 and today there are 8,000 volunteer tree champions in local networks in England, Wales and Scotland. For many years the scheme was strongest in rural areas, with tree wardens often linked with parishes (Susan Anderson is our warden). However, recent additional funding will help the Council to extend their projects further.

Over the past 20 years, tree wardens have dedicated an amazing 22 million hours to their communities' trees – worth nearly £154 million pounds. (calculated using the Heritage Lottery Fund volunteer labour rate of £50 a day.) Think of the value and lasting benefit we get from trees and their local champions – all unpaid!

The Tree Council covers 180 organisations working together for trees – planting, caring for and enjoying them – and a forum for tackling issues relating to trees and woods. It focuses on making trees matter to people, more trees, of the right kind, in the right places, better care for all trees of all ages and inspiring effective action for trees. It helps engage people in biodiversity and environmental issues and to promote planting and conservation of trees and woods. It has a community action programme that includes Walk in the Woods month, Seed Gathering Season and National Tree Week.

It operates a grants programme for communities to plant trees and create woodland habitats, as well as the Tree Care Campaign, the Green Monument Campaign and Hedge Tree Campaign. We have been granted funds to plant hedging along the A1307 to help reduce noise and improve wildlife corridors – this is just a grant for the hedging plants and trees; we still need the muscle power to plant them.

Roz and Andrew are looking for areas to plant a community orchard, so ideas would be welcome. LPC (with help from the SCDC Tree Officers) will continue to plant trees in and around Linton, where we see a need and as part of our ongoing programme of planting. We hope that you will let us have your ideas on where to plant, but bear in mind that we are restricted to public spaces, of which there are few.

Enid Bald



Could we see something like this in Linton?

Put on your running shoes for the Teenage Cancer Trust

ON Saturday 3rd July between 10am and 1pm, Linton village college is holding a fête and fun run on our playing fields. We are going to raise money on behalf of Teenage Cancer Trust to help young people with cancer to be teenagers again. This event was inspired by a girl at our school who was diagnosed with cancer at the end of 2009. The Trust helps to build specialist wards at NHS hospitals. These improve the quality of life and chances of survival for young people with cancer.

The main event at our fête will be the fun run and we are hoping many people will join in this. The race will start at 10.30am with different categories, for which prizes will be awarded, including competitive running, walking, novelty run and fancy dress. It costs £5 to take part. You can get an application form from LVC's front office or contact helena.perry@lvc.org.

All the proceeds will go to the Teenage Cancer Trust.

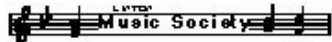
Students in 9HP

Prepare to be transported to another world



The Armonico Consort

Picture supplied by the Armonico Consort



LINTON Music Society is delighted to welcome the renowned vocal group, the Armonico Consort, for the last concert in the current season, *Glory of Old England*.

The Armonico Consort transports audiences to another world with polyphony and chant by Tallis and Byrd, plus some more light-hearted music from the last 500 years, including close harmony and folk songs.

Atmospheric and full of magical musical moments,

concerts from the Armonico Consort have been a sensation at every major music festival across the country.

The concert takes place at 7.30pm on Saturday 19th June at Linton village college. Tickets are available at the door, or in advance either by telephoning 01223 893480 or from Sweet Talk News, 77 High Street Linton.

Further information about all concerts and the Linton music society is available by visiting www.lintonmusic.org.uk

Gill Lee

La Pipelette (Chatterbox)

Quand le soleil brille...

QUAND le temps devient plus chaud, les gens décident de faire plein de choses. On décide d'organiser des barbecues, on invite ses amis à la maison.

Beaucoup plus de gens décident de partir en vacances ou peut-être juste d'aller à la plage ou au bord de la mer.

Avec le soleil, les enfants jouent plus dehors, marchent plus pour aller à l'école, pour aller au parc en famille ou pour promener les chiens.

Quand l'été arrive, le soleil se lève plus tôt et les gens sourient plus au soleil.

On a tous besoin de soleil.

MALLYON & DONALDSON Linton

Specialising in both Modern and Traditional building methods.

**Tel: 01223 891267
Mob: 07941 220868**

**All contracts finished to a high standard.
Reliable service. Local references available.**

GARAGE DOORS SERVICED-REPAIRED REPLACED

Spares for all makes

Free Estimate, Brochures and Advice
Steel – GRP – Timber
Sectional single or double skin
Roller Doors

A.B.C. Garage Door Systems
Telephone 01223 893798
or mobile 07774 499537
www.garagedoorsabc.co.uk
email@garagedoorsabc.co.uk

LINTON PAVING COMPANY

YOUR LOCAL LANDSCAPING
BLOCK PAVING & PATIO
SPECIALIST.
PROPERTY MAINTENANCE
Int/Ext Painting, General Repairs
FRIENDLY SERVICE.
FREE QUOTATIONS
Tel: Andre Jacobs

**01223 890060
07765 594398**



PLODDING ALONG

An update on police matters

Vehicle crime is a continuing problem in Linton

A VEHICLE was broken into in Balsham Road. The n/s/f window was smashed and the boot and side door damaged. Nothing was taken.

A wheelie bin was stolen from a property in Wheat Croft.

A pedal cycle was stolen from outside a shop in the High Street. The cycle was a man's mountain bike in blue with Shogun XC200 written on it.

At Chilford Hall car park, a vehicle was broken into. The n/s/f window was smashed and the boot and side door damaged. Nothing was taken.

At Linton infant school, Church Lane, a vehicle was broken into. Again the n/s/f window was smashed and various items were stolen from within.

As you can see, vehicle crime is a continuing problem in our area. Please remember to reduce the risk of becoming a victim of theft from your motor vehicle by adopting the following steps:

- Do not leave property in your vehicle when leaving it unattended.
- Lock your vehicle.
- Close all windows.
- Leave the glove box empty and open to show that you have not hidden any valuables inside.
- Never leave a car running unattended.

We have received reports of a large white dog, possibly a husky/Alsatian cross, on the recreation ground in Linton. This dog has been muzzled, but off of the lead, and has knocked over and jumped on several small children. The children have quite obviously been scared and one of them has been slightly injured. We need to locate the owner of this dog, so If you believe you know who this dog belongs to, or have any other useful information regarding it, then please contact PC Rebecca Parkin on 0345 456 4564 extension 7111273.

If anyone has any further information regarding these crimes please call 0345 456 456 4 and if you see any suspicious activity/vehicles in your area, please report these asap on 999.

Please come and meet your local officers for a chat and discuss any issues or concerns you may have.

PCSO 7239 Leanne Fisher (formerly Allan)
Linton Neighbourhood Policing Team

Trading Standards working to help communities thrive

CAMBRIDGESHIRE Trading Standards Service is carrying out a survey amongst the residents of Cambridgeshire to identify what they would like Trading Standards to focus on in their local area and to identify any particular trading issues affecting residents.

The more responses we receive, the more reflective it will be of the wishes of local communities.

The survey can be found at www.cambridgeshire.gov.uk/ consumer and will run from 10th May until the end of June. We have also provided a number of hard copies of the survey to hub libraries within Cambridgeshire for any instances where a these may be required by a member of the public. Alternatively a hard copy of the survey can be requested by calling the County council on 715667. A prepaid envelope is provided with each questionnaire.

Everyone who enters will be given the opportunity to be entered into a prize draw (subject to terms and conditions available on our website), with the winner being awarded £100 worth of Marks and Spencer vouchers.

Tamar Blackburn
email tamar.blackburn@cambridgeshire.gov.uk

BED & BREAKFAST

Mrs Monica Clarkson
4 Harefield Rise, Linton
Tel: 01223 892988
Quiet modern bungalow
Families welcome
No Smoking

Now you can learn SPANISH

with an experienced tutor,
at your own pace,
in the comfort of your own home.
SUSAN HODGES
Tel: 01223 891521
Email: sjhm2@yahoo.co.uk

YOLE FARM BUTCHERS

*

35-37 High Street,
Balsham, Cambs.

Tel: 01223 893832

Family and
Catering Butcher
All produce where ever
possible is sourced from
our own or local farms

Made to Measure

CAPRI BLINDS

* Verticals * Roman * Roller * Pleated
* Venetian * Wooden

CALL NOW FOR

free quotation - free measuring - free fitting
*Awnings supplied and fitted
from £350*

Tel: 01223 894020
www.capriblinds.co.uk

Opportunity awaits



- ⇒ Industrial
- ⇒ Administration
- ⇒ Secretarial
- ⇒ Accounts
- ⇒ Sales
- ⇒ Customer Service
- ⇒ Engineering

We provide a professional and friendly recruitment service to Haverhill and the surrounding villages. If you are looking for **short term temporary work** or if you are looking for the **next step on your career ladder** then call us today or email your CV to: jobs@cremrecruitment.co.uk

www.cremrecruitment.co.uk

Contact Colin Saunders or Tom McKenzie
on: 01440 708833

**FREE
COMPETITIVE
ESTIMATES**

Watkins Joinery



- FITTED KITCHENS / BEDROOMS / WARDROBES
- CABINET MAKERS
- BESPOKE JOINERY
- DOORS / WINDOWS / STAIRS
- WOODEN FLOORING
- CONSERVATORIES
- EXTENSIONS / REFURBISHMENTS

20 YEARS' EXPERIENCE
INSURANCE WORK
UNDERTAKEN

Tel.: 01223 890600 Mobile: 07802 885390
colin.watkins@keme.co.uk

Readers write...

Post and email addresses and deadline for letters are below. All letters for publication must have a full name, address or phone number to enable us to check authenticity. Letters may be edited. Opinions are not necessarily those of the Linton News.

Dear Editor,
Your readers may be interested in learning that parts of the High Street and Back Road are to be resurfaced. This will mean road closures over the weekends of 5/6th June and 12/13th June.
The High Street from Balsham Road through to Coles Lane will be worked on over the weekend of 5/6th June. Back Road will be done on the following weekend.
The relevant parts of the one-way system will be closed to traffic. The one-way system will be maintained so that travel through the centre of the village will only be in one direction each weekend. This will mean having to use the bypass to access some areas of the village.
John Batchelor
County and District Councillor

Dear Editor,
I live in Linton, having moved here in 2003 from Whitby in North Yorkshire where I was a GP and anaesthetist for 25 years. I've been a member of the service club Lions since 1972, first in Whitby and then in Saffron Walden.
The Saffron Walden Lions offer an appliance loan scheme to anyone in this area who needs it. The service is manned by volunteer Lions and is free of charge, (although a donation is appreciated on return of the articles to help maintain the stock.) The store contains wheelchairs, commodes, toilet raisers, walking sticks and crutches, Zimmer walking frames, shopping trolleys, Swedish trolleys (indoor), bath aids, and back rests.
To access this loan scheme a person has only to telephone 07761 602678 where contact will be made with one of the Lions who will arrange to meet the person or their representative at the loan store, situated just behind the Saffron Walden Community hospital in Radwinter Road, Saffron Walden, to provide them with the item needed.

This scheme is intended for short term loans i.e. immediate and up to three months. If a person has need of the equipment for longer than that the probability is that they will need it long term or permanently, and will need to make arrangements with Social Services. The Lion's scheme is for people just out of hospital or to cater for elderly visitors to save having to bring their own equipment for a visit.
D R Lockstone 891931
Lockstonecd@waitrose.com

Dear Editor,
A number of people have expressed surprise that we were standing down from the parish council. After all, we had been councillors for 20 and 16 years respectively, and, between us, been the Chairman for six of the last thirteen years. We also, as members of the Cathodeon Trust, help to manage the Cathodeon Centre on behalf of the parish council for the benefit of the community, a role we will continue to fulfil.
For most of our time we were glad to be councillors. Everyone worked well together. The council got a lot done. Like any council, there were often differing views about items of business, but we always resolved them by open and

amicable debate.
However, more recently being parish councillors became an unhappy experience for both of us. Rudeness seemed to be regarded as acceptable behaviour. Factions developed. There was often an edge to meetings. By the end of our time as councillors, we were really attending meetings solely out of a sense of duty. We know there were other councillors with similar feelings.
Until recently, we did not think it would be helpful to the parish council to make our feelings known publicly. However, a short paragraph in May's Linton News headed simply Parish Council election unnecessary made us

A & R
PLASTERING

All aspects of plastering undertaken:
Plasterboarding
Rendering
No job too small
19 years experience
Free estimates

Linton based: 01223 890228
Mobile: 0774 8627920

N. CLAXTON

Painting & Decorating
and
Property Maintenance

FREE ESTIMATES
Tel: 01223 893487
Mobile: 07724073045
e-mail: n.claxton925@btinternet.com

A.J. COPELAND & CO.
Chartered Accountants, Linton

Audit, Accountancy, Tax and Consultancy Services
for Business and Individuals

Computerised Self Assessment Tax Return Service

For FREE initial consultation phone
01799 506602
Email: ajcopeland@compuserve.com
website: www.ajcopelandca.co.uk

BUSINESS
ARE

OUR THANKS

Dear Editor
The third Linton Children's Book Festival, which was recently awarded Best Festival took place between the 1st and the 9th May this year and was a great success, attracting visitors from all over South Cambridgeshire, and beyond.
This is a largely volunteer-run festival and it couldn't happen without the help of so many people in the village, and huge thanks go to the festival committee, all our friends and family who gave up their time to help run over 40 events, the Linton News delivery team, Judy Rossiter, Susan Anderson and the Bickerstaff family who allowed us to hold storytelling sessions for up to 100 children and parents in their beautiful gardens-we hope not too much was trampled, the schools for their wholehearted support of the event, Karl Backhurst of the Darryl Nantais Gallery, Linton Theatre Workshop for Revolting Rhymes, the Linton Buskers who braved the cold to entertain, the Infants PSA, Emma Mason of Music Matters, the library storytellers, and Sarah Stratton and Isobel Fish, Hilary Crooks and Anne Bradley who helped form the Linton Festival Orchestra especially for the event, Linton Zoo for the loan of Cosmo the owl, Garth Collard's local knowledge for the history walk, LVC students who helped over the week, the Church for providing a venue for our Beast Quest challenge, the Parish Council and our local sponsors for their financial support, and all those who were cajoled into taking part.
Apologies and thanks to anyone we've missed. And, of course, thank you to everyone who came along-we hope you all enjoyed it.
Andrew Clark, Lindsay Levine, Josephine Paterson

Dear Editor
At the end of the Save the Children week we are most grateful to donors, collectors and the friends who helped us to count the impressive sum of £1501.60 raised in Linton and Hadstock, despite the recession and smaller area we were able to cover this year. Thank you all.
Anna Newton for the local committee

Coffee morning for Cancer Support
A COFFEE morning in aid of Macmillan Cancer Support, with a talk by one of their representatives, will be held from 10am-1pm on Saturday 19th June at the Chalklands community room. This event is jointly sponsored by Linton Initiative for the Elderly (L.I.F.E). Refreshments, handicrafts etc. will be on sale and proceeds will be shared between the two groups. For further information contact Miriam or Geoff Reynolds on 892645.
Geoff Reynolds

feel we should do so. Eight years ago 18 people stood for election to the Parish Council. This year only 11 volunteered for the 15 places. That is some reflection of the varying fortunes of the council.
We are also sad that little recent progress has been made towards the goal of Quality Parish Council Status. It is now some years since many people put a lot of effort into the parish Plan which was seen as a building block on the way to quality status.
The parish council needs to be at full strength. It is an important force in the village, with the potential to achieve a lot for the community, as it has in the past. It spends a lot

of our money, through the parish precept. At every council meeting, especially now they are held twice a month, there are usually a few councillors absent for good reason, and having enough councillors present to ensure balanced debate is important.
We hope those councillors who have been willing to shoulder the burden and carry on will take steps to address the recent problems so that the fortunes of the council are restored. We wish them well and look forward to the day when we could once again positively encourage people to become councillors.
Andrew Gore & Val Urwin

THE LINTON NEWS Next Publication 5th July 2010

DEADLINES for ADVERTS Monday 14th June
NEWS ITEMS Friday 18th June

ITEMS FOR ADVERTISING MANAGER
Priority is given to Linton businesses
Our advertising Manager is Judith Rouse
email: adds@linton.info

ITEMS FOR THE EDITOR
Can be put in the Linton News Box in the Post Office
Editor: Jen Kessel email: ineditor@linton.info
phone 897965

For distribution queries contact: Kate France 891602

Paul & Sonya welcome you to

THE PEAR TREE INN
HILDERSHAM
Tel: 01223 891680

Traditional family run 4 star village pub with great ale,
great food and great atmosphere
Menu changed monthly with special theme evenings
NEW - open for lunches
Wednesday to Sunday 12.00- 14.30
Food every evening except Tuesday
4 Star Bed and Breakfast accommodation

LINTON DIARY

For entry in this list, ensure that your event is written into the diary in the Post Office.
You may also send an email with your event details to diary@linton.info, or use the form on www.linton.info.

Call 891104 for an audio version of the Linton News
Details of items in **bold type** may be found elsewhere in this edition.

Please note that we are now trying to cut down on the number of weekly activities that are mentioned in the diary, as we felt the list was becoming too large. Therefore we have decided to cut any profit making activities. We have also removed any activities taking place at the sports centre. For sports centre activities please see www.linton-sport-fitness.co.uk or call 890248

WEEKLY	
Whist drive, 7.30pm Mondays	VH
Linton theatre workshop, Mondays	(call Joe 01440 703701)
WEA, 10am Tuesdays	VH
Scrabble club, 10am-12noon alternate Tuesdays	Church pavilion
Ladies' football, 7-8pm Tuesdays	LVC
Linton chess club, 7.30pm Tuesdays	CC
Granta duplicate bridge club, 2-4pm Tuesdays	VH
Junior choir, 6pm-6.45pm Tuesdays	St Mary's
IT club, 7pm Tuesdays	CC
Linton children's centre, call 07768 008 919	CC
Bowls roll-ups, 2pm Wednesdays Apr-Oct	Bowls pavilion
Linton radio race car club, 6-10pm Wednesdays	VH
Carpet bowls, 7.30pm Thursdays	VH
Mums and Tots Mocha house, 2-4pm Fridays	Church pavilion
Buffy bus, 11am-12.15pm Fridays	Hadstock village green
Bridge club, 7pm Fridays	CC
For sports centre courses please call Mark Wilson 890248	
JUNE	
1 Farmers' market, 9.30am	LVC
1 WI, 7.30pm	VH
2 Linton Reading group, 8pm	D&D
3 Linton lunch club, 12 noon	D&D
3 Trefoil Guild Orienteering, 7pm	Wandlebury
3 Parish Council meeting, 8pm	CC
7 Camera club, 7.15pm	CC
8 VIP meeting, 2pm	Chalklands
10 Alzheimers' Trust bring & buy, 10.30am	20 Hollybush
Way	
13 Camera club outing 10.30am	Coles Lane car park
13 Aztecs V Aston Villa old stars, 10.30am	LVC
14 Resident's association AGM, 7pm	Chalklands
16 Camera club outing, 9.30am	Coles Lane car park
17 Parish council meeting, 8pm	CC
19 Family fun day	Chestnuts playgroup
19 Armonico Consort concert, 7.30pm	LVC
19 Dad's and Tots, 9.30am	VH
19 Hadstock village fete, 2pm	Hadstock
19 Macmillan/LIFE coffee morning, 10am	Chalklands
19 Conservative garden party, 2pm	The Beeches
19 Hadstock music festival concert, 7.30pm	Hadstock C
19-20 Open studio, 11am-4pm	Yew tree farmhouse, Linton
Road, Hadstock	
20 Chilford 10K run, 11am	Chilford Hall
22 Violin/cello concert, 7.30pm	Hadstock Church
24 Concert, 7.30pm	Hadstock Church
24 ACE'S cream tea, 2-5pm	7 Symond's lane
25-27 Flower fest and fete, 11am	St Mary's and infant
school	
25-27 Chilford art fair	Chilford Hall
26 Teddies' parachute jump, 3pm	Mary's church tower
26 Concert, 7.30pm	Hadstock Church
26 Strictly Midsummer ball, 8pm	LVC
JULY	
1 Linton lunch club, 12 noon	D&D
1 Parish council meeting, 8pm	CC
2 Linton Summer fair, 5-8pm	Linton Heights
3 Linton Fete and fun run, 10-1pm	LVC
6 WI meeting, 7.30pm	VH

KEY: CC Cathodeon centre, D&D dog and duck, HC health centre, LH Linton Heights school, LVC Linton village college, RG recreation ground, URC United Reform church, VH village hall

Library times: Monday Closed; **Tuesday** 10.30am-1pm, 2pm-5pm; **Wednesday** 2pm-5pm, 6pm-8pm; **Thursday** Closed; **Friday** 10.30am-1pm, 2pm-5pm, 6pm-8pm; **Saturday** 10am-12noon.

Refuse collection: 7th June, 21st June, 5th July
Recycling collection: 1st June, 14th June, 28th June

Chalklands and Paynes Meadow Resident's Association
ALL local residents are invited to attend the Annual General Meeting at 7pm on Monday 14th June in the communal room at Chalklands. This will be followed by a social evening and refreshments, when any local issues can be discussed.
The committee is presently struggling to survive and is in great need of more support. Please come along, enjoy the evening, and if possible volunteer some help in any way you can. For further information please contact Kate on 890283 or Linda on 891481
Kate Eagin

Nina, Carl, Amie & Louise welcome you to

Boyz 2 MEN BARBER SHOP

Opening Hours:
Monday 8:30am - 6pm
Tuesday 8:30am - 6pm
Wednesday 9:00am - 8pm
Thursday 8:30am - 8pm
Friday 8:30am - 6pm
Saturday 8:00am - 3pm

Fully air conditioned
LATE EVENINGS 'TIL 8PM
Wednesday - Thursday
Nina is now taking appointments
Wed 5:00 - 8:00 pm

Special rates for senior citizens Monday to Friday
113^a High Street, Linton
Tel: 01223 894481

Boyz 2 MEN

Donations and history add up to an interesting two months for the ACEs

IN April, the Waitrose Community Matters scheme nominated ACEs for their green token scheme. I had been saving tokens ever since I sent in the application, so had quite a pocketful to (discreetly) deposit in the box. We raised over £200, which will be used to help fund food and speakers. Thank you for contributing, and many thanks to Waitrose.

We also thank The Anderson Benefaction for their continued kindness to ACE. Their generous donation of £250 is to be used for hire of venues (church pavilion, mainly) and will in turn help to fund other activities – the funds are kept in the village and go around, their benefit multiplying within the community. If only all finance could be used as efficiently as our local funds...

ACEs held a ploughman's lunch at the church pavilion in May, with a fascinating and engaging talk on 175yrs of the Saffron Walden Museum given by Caroline Wingfield, the curator.

This is a small but very important museum, with significant collections of local history, the trades and business of the town and its many notable inhabitants.

It was the zeal for knowledge and culture that led to the founding of the museum; this continues with conservation work and improved archiving which are a solid basis for learning and research, helped by the new displays.

Caroline showed the range of exhibits and brought some for us to examine, adding to our enjoyment.

A myth was dispelled – it was a cow hide, not the skin of a Viking raider, which covered the door of Hadstock church. In recompense, the Battle of Assandun in 1016, is more likely to have taken place near Hadstock than in Kent – Cnut/Canute marching through Linton to intercept Edmund Ironside would make an interesting re-enactment.

On 24th June we have our annual afternoon cream tea at 7 Symond's Lane from 2pm to 5pm. We hope to have a tombola, bring and buy, friends of St Mary's and other stalls. As it will be mid summer, please bring a brolly.

Call Enid on 891069 or Anne/Sue on 891001, if you need a lift. All welcome.

Enid Bald

Ash brings silence to the skies

WHEN the volcanic ash cloud from Eyjafjallajökull kept all our aircraft grounded for a few days, yes, there was chaos and inconvenience and for many it was a catastrophe, but for me it had its upside.

We are blessed with beautiful skies here, and during that time the skies were free from the vapour trails creating their abstract designs. The cloud formations one day were quite amazing and I whiled away my time watching the fabulous formations – but perhaps those formations were full of volcanic ash and other mysterious pollutants. I don't know. One thing I do know however is that we'll never see skies as our distant ancestors did, and it was suddenly so peaceful!

We may not be on a flight path, but the drone of planes is a distant background noise. Many of us noticed that peace and enjoyed it.

Trysha Hunt

Pigs from another planet

theWI
INSPIRING WOMEN

DID you know that ants can change the size and shape of the pads on their feet depending on the load they are carrying? Also that there are 700 varieties of cheese made in Britain – 100 more than in France. I learnt this whilst reading a newsletter published by COPE (Cambridgeshire Older People's Enterprise.)

Maurice Garner, COPE's chairman, informed us at our May meeting, that COPE is a self-help group run for and by its members, dealing with any matters that may concern people over the age of 50. This was not a light-hearted subject but there were moments. Whilst beginning his talk Maurice tripped over his feet and grabbed the table. Then reaching for his glass of water he took a sniff and declared it must be gin. As if the WI would do such a thing.

To lobby. What a lovely verb that is, and it's something the WI is good at. At the AGM this year all WIs will be debating the issue of food labelling. We are urging HM Government to introduce clear and mandatory country of origin labelling on all meat, poultry and fish products sold in this country. Currently a pork pie can be labelled as British if it was made into a pie in Britain, even if the pork it contains comes from pigs born, reared and slaughtered in another country or even another planet. Did you realise that some ready meals marketed as Great British Classics contain foreign meat? Meat should only be labelled as British if the animals were born, reared and slaughtered in the UK.

Existing campaigns include Honest Food – launched by the Conservatives and supported by organisations such as the NFU, British Poultry Council, National Pig Association and many others. Many celebrities are also involved including Jamie Oliver and Hugh Fearnley-Whittingstall. I think you will all agree this is an important lobby.

At our meeting on Tuesday 6th July Peter Lawrence will be talking about Warships to the Olympics, a history of the River Lea. We meet in the village hall at 7.30pm. This is an open meeting and visitors, including gentlemen, are extremely welcome.

Trysha Hunt 894533

Chilford 10K race keeps Linton running

FOLLOWING the announcement of the race in the previous issue of the Linton News, we are pleased with the feedback we have received so far. We would like to remind you that runners can still enter the Chilford 10k which will take place at 11am on Sunday 20th June at Chilford hall. You can download an entry form at www.saffronstriders.org.uk/racecalendar or email chilford10k@googlemail.com

The race will start and finish on the green at Chilford Hall vineyard going through Rivey Hill and Back road. We hope people along the route will support and cheer the runners and we apologise in advance for any disruption on the day.

The venue is a perfect opportunity for families to gather on Father's day and enjoy the surroundings, the Chilford cafe and all that Linton has to offer. Prizes from Chilford Hall and Advance Performance Cambridge will be awarded to the first lady and man in the 10K race and the first lady and man in the 5K race. Remember all funds will benefit the LOSC (Linton out of school club).

Should you need further information, contact me on 07982 787 770. We are grateful to the community and our sponsors: Chilford Hall, Advance Performance, Jazzercise, Icen water, Linton Sports Centre, Nextnorth and Saffron Striders.

Stephane Toussene

Amazing acoustics

IT is said by visiting musicians who have performed in the prestigious concert halls of the world that the acoustics and ambience of Hadstock church are superior to many of the most famous venues worldwide.

For the third Hadstock Music Festival, Bernard Lanskey, pianist and Professor of Music in Singapore University, has brought together an exciting group of top performers.

Among these performers are soprano Felicitas Fuchs, who has recently sung in Paris under Lorin Maazel, one of the world's most esteemed conductors, cellist Qin Li-Wei shortly to play for the BBC Proms and a regular guest at the Wigmore Hall, Aki Sauliere, the Paris based violinist, due to perform in Musikverein, Vienna, Qian Zhou, violinist and head of strings at Singapore University who will play on every continent except Africa this year and William Coleman, a viola player whose family live in Saffron Walden and



Violinist Qian Zhou

Picture supplied by Yong Siew Toh Conservatory of Music Singapore

who will play at Carnegie Hall, New York.

This is an opportunity for you to judge for yourself and enjoy a summer evening in the beautiful location of Hadstock church.

The series of four charity concerts are on 20th, 22nd, 24th and 26th June at 7.30pm in Hadstock Church and tickets are available from Saffron Walden Tourist Office. Tel: 01799 524002.

Sue Walker 891710

Mock elections at LVC

STUDENTS at Linton village college (LVC) have defied the national trend by voting for a Liberal Democrat. Chloe Devlin, 15, received 194 votes, in a mock election held on the same day as the general election on 6th May. In second place was Penny Malpass for the Conservatives with 84 votes, followed by Labour Frank Omand and Lewis with 42 votes. All students in the school were entitled to vote and the turnout was around 40 per cent.

On the day of the election, Chloe received a message of support from Jonathan Chatfield, Liberal Democrat candidate for South East Cambridgeshire, recalling his memories of standing in a mock election at school. "I feel that the Liberal Democrats are the future of British politics so I am glad that my campaign managed to reach out to young people," said Chloe.

"A general election only comes around every few years and this was a fantastic opportunity to engage our young people in politics," said Caroline Derbyshire, principal of LVC. "Our students care passionately about the world around them and it is important for them to stand up for what they believe in, to debate issues such as education and the economy, and to take part in the democratic process – particularly as many of them will be old enough to vote by the time of the next election. It was wonderful to see the long queue of pupils waiting to vote when the polling station opened on Thursday morning. Congratulations to all of the candidates for taking part and expressing their views so eloquently."

Tony Kelly



Three likely candidates, from left to right Frank Omand Lewis for Labour, winner Chloe Devlin for the Liberal Democrats and Penny Malpass for the Conservatives

The Bard of Linton

WINE, women and song
I've done all in my life,
I've given up women
And singing
I'm still whining
Says my wife!

BED & BREAKFAST
SPRINGFIELD HOUSE
14/16 Horn Lane, Linton
Regency house near Church.
River views from bedrooms & guest lounge.
Tel 01223 891383

Trafalgar Accounting & Taxation

Local Businesses
Personal Income Tax Returns
Based in Linton

Ring 01223 897930
Free initial consultation

The Dog & Duck
63 High Street, Linton
Tel: 01223 891257

Open all day – every day
morning coffee, tea and pastries
lunch 12-5 and dinner 5-11.

Families with children are more than welcome,
Your Favourite Local to Eat, Drink, Relax and Enjoy
Birthdays, Anniversaries, Special Occasions
Ristorante Italiano – Italian cuisine, perfect ales,
superb food, great atmosphere...
Check out our website for ongoing specials
<http://www.dogandducklinton.co.uk>

D.J.C
PAINTING & DECORATING
EXTERIOR & INTERIOR
FREE ESTIMATES
ALL TYPES OF CEILING & WALL COVERINGS
20 YEARS EXPERIENCE
CITY & GUILDS QUALIFIED
Tel: Darren – 01440762635 / 07796544080
djsmith1@btinternet.com

Reliable Local Builder

From conversions to plastering, renovations to tiling and decorating-

No job too small

Tel: 01223 290925
Mobile 07813 070369

Linton Complementary Health Centre

2b Bartlow Road, Linton

- Acupuncture, Peter White; MSc, MBACc
- Hypnotherapy, Ellie Cochran ; BSc, BSCH
- Massage, Peter White; MSc, Dip. Massage
- Shiatsu, Cindy Faulkner; BA, MRSS
- Chiropodist, Sharon Bennett M.Inst.Ch.P

Telephone: 0845 430 9120

Web Site: www.lintonhealth.co.uk

GE OFF
NORBY
Reg No. 34107

PLUMBING & HEATING ENGINEER - Estd. 1966
All aspects of Central Heating and Plumbing
Boiler Service & Maintenance
Bathroom Suites & Power Showers
Kitchen Installations - Tap Washers

Telephone 01223 892311

CHIMNEY SWEEP

J. L. WIGHT

Guild of Master Sweepers.

Qualified advice Problems solved.

Certificates issued.

www.camsweep.co.uk

01954 253315

26, Cow Lane, Rampton

Linton village college has definately got talent

THE ITV talent contest ‘Britain’s Got Talent’ may continue to dominate the Saturday night ratings, but students at Linton village college (LVC) held their own version on Friday 7th May to celebrate the talents closer to home. ‘Linton’s Got Talent’ was planned and run by year 11 students to raise funds for the Teenage Cancer Trust and the LVC leavers’ ball.

The evening saw a glittering array of



KS4 winner - James Baker

talent on display, from card tricks to gymnastics, street dance to stand-up comedy, barber-shop singing to jazz saxophone and Bollywood dancing to pantomime dames. TV judges Piers Morgan, Amanda Holden and Simon Cowell were unable to attend, but LVC had its very own panel of judges in Jerry Hyde, Julie McGrath and Amanda Clay.

After much deliberation, the judges announced

a shortlist in each of the two categories (years 7 to 9 and years 10 to 11) which was put to an audience vote to decide a final winner.

The winner of the Key Stage 3 category was MG’s Strictly Street Dance act featuring Megan Cracknell and Kirsty Webb, both 14, who have already won prizes in national competitions.

The winner of the Key Stage 4 category was James Baker, 15, also known as The Fabulous Baker Boy, for his per-

formance of Snow Patrol’s *Chasing Cars* on piano and voice.

Emily Coppen, 15, one of the organisers, said: “There was a wonderful atmosphere throughout the evening.”

Tony Kelly



KS3 winners - Megan Cracknell and Kirsty Webb

Hadstock is a busy village

MORE than 50 villagers and friends joined a sponsored walk around Hadstock in May. The three mile route followed some of the prettiest footpaths around the village and the children followed an activity trail which kept them all busy. The walk finished with a picnic and ice creams on the recreation ground. The event raised over £200 which will go towards a new climbing frame for the recreation ground.



Time to relax after the walk
Picture by Isabel Fish

This year’s Hadstock fête continues the traditional format with stalls, games and sideshows around the village green and churchyard. There will be a display of classic cars, swingboats on the green, teddy bear jumps and much, much more. We hope to build on the record success

of last year when £8000 was raised. A change this year in the way proceeds will be distributed means that £750 will go to the Recreation Ground charity towards the provision of new play equipment with the remainder being split equally between the Church fabric fund and the village hall. The fête is held on the Saturday dearest to St Botolph’s day, the patron saint of our parish church and has its origins in a horse fair established by charter in Henry II’s time. This is a great venue for a village fête so do come along, festivities begin at 2pm on the 19th June; parking available.

Rick Albrow

Limbering up for fun day

CHESTNUTS playgroup has come to the end of yet another busy half-term. The weather has been very kind to us lately enabling us to run a lot of our sessions in our blossoming playgroup garden. As you can imagine, the children have thoroughly enjoyed this.

We would like to extend a big thank you to the Parish Council from the children, staff, committee and parents of the playgroup.

The Parish Council provided us with a generous grant of £500, which we have put towards computer equipment and a cd player with multiple headphones, thus enabling several children to listen to stories and songs at the same time, which is beneficial in their social development. The children have thoroughly enjoyed using this equipment.

Since half term the children have been limbering up and preparing for the Family Fun

Day on the 19th June, during which they will be participating in some races. This event is usually very successful as the children have practised their races and are keen to do them in front of their friends and loved ones.

The children are all rewarded with certificates and stickers, even those who may be a little shy on the day. We look forward to sharing this day with our children, enjoying the stalls and refreshments that will be laid on to make this memorable day. We still have places available in September, so please don’t hesitate to contact us and arrange to pop in and see our welcoming, nurturing environment. We hope you all enjoyed your half-term.

For admissions please contact our admissions clerk Karen Graves on 01223 891416. We look forward to hearing from you.

Victoria Jones, 891972

BED AND BREAKFAST
BAKERY COTTAGE
WEST WRATTING
CAMBRIDGE
CB21 5LU
also
Cottage and Converted Barn to rent for holidays, weekends and short breaks. sleeping 6 and 4 people
Tel Carol on 01223 290492 07860 810689

ClearTax
& ACCOUNTING LTD
All your tax and accounting needs, personal and business.
Specialist in tax planning
Free initial consultation
Tax returns from £99^{+vat}
Based in Hadstock
t: 07896 298253
e: janine@cleartax.co.uk
www.cleartax.co.uk

Artistic galaxy descends on Linton

FORTY-TWO galleries from throughout the UK and Europe will bring some of the finest contemporary artworks to the beautiful setting of Chilford Hall this June as part of the East of England’s premier art event, the Cambridge Art Fair.

Work by some of the world’s best emerging and established artists will be available to view and purchase across the weekend, and with prices ranging from £75 to more than £50,000, there is sure to be something to suit everyone’s budget.

If buying art isn’t on your mind, then why not come along and enjoy viewing the extensive collection of modern and contemporary art in the idyllic surroundings of Chilford Hall Vineyard. A fully licensed café will operate throughout, making it an ideal way to spend your weekend. Weekend passes are available on the door. Please visit www.artcambs.com or call 01875 819595

Andrew Vipond

CHIROPODIST
Sharon Bennett
M Inst Ch P
At Linton
Complementary Health Centre
2b Bartlow Road
Linton
07810756134
Member of the Health Professions Council
www.lintonhealth.co.uk

Singing Lessons
Sarah Rosewell
BA (Hons) Music
Individual singing lessons available for all ages and abilities
Whether towards exams or purely for pleasure
* CRB Checked
* Based in Linton
For more information contact:
Sarah on 01223 894861
Email:
sarahrosewell@hotmail.com

DRIVES & PATIOS
HOUSE EXTENSIONS
HOME IMPROVEMENTS
PAINTING DECORATING
A & T Groundworks Ltd
FRIENDLY SERVICE LARGE & MINI DIGGERS FOR HIRE
Call Ashley on 01799-520298 - Mobile 07803745637

POT POURRI (65)
What size is the Square Room?
I WISH to build a square room in the attic of a house. The roof space is essentially a triangle with slopes of 13 and 37 feet and the floor is 40 feet wide.
What is the width of a square shaped room I can fit into this triangular space? (Height = width). The answer may be left as a fraction if the dimension is not a whole number.
Solution to No.64-Lintonia’s Temperature Scale?
98.6 deg.F = 389 deg L and the full scale is 740 deg L.
Note: Last month’s pot pourri unfortunately had printing problems. The bracketed stages should have had commas or ellipses to show the solution by stages. Apologies.

NEWS IN BRIEF...
Linton health centre
THE government has asked all GPs to provide extended hours appointments. These are appointments outside normal hours (8am to 6.30pm), and are in addition to our existing appointments.
For over a year now we have been offering later evening appointments one day a week up to 8pm, and every Saturday morning to 10am. We have one or two doctors working at any one time and these sessions are for booked appointments only. We do not (and can not) see any urgent cases that attend the surgery hoping to be fitted in. The out-of-hours service continues to provide help for emergencies after 6.30pm and before 8am and at weekends.
It has been suggested that some patients would find an early morning surgery more useful and we are therefore going to trial an early morning surgery each month, with appointments starting at around 6.30am. We will start offering these appointments from July and hope that it provides a useful service to those patients who currently find it difficult to access our services.
Sheila Griffiths
Practice Manager

Student print scheme
HAVE you heard of the Art Loan Scheme? It has recently changed its name to Linton Student Print. The scheme is all about allowing people interested in art to go to the Curwen Print Study Centre at Chilford Hall to produce professional quality prints which we then sell in exhibitions and events.
We have also recently created a beautiful range of cards using images of prints that we have made. These are available to buy at the college from the reception or the Art department. They were all made by students and we offer 11 different designs.
If you would like to find out more please contact Helena Perry, Head of Art at helena.perry@lvc.org.
Gemma Cassettari and Rachel Organ

Keep fit this summer
You now have the opportunity to use our highly commended, high quality floodlit all weather football pitch over the summer period.
If you would like to keep your football skills up to scratch over the close season, during the world cup, or would like to play a match, then please let me know.
This summer space is available between May and August, and is on a first come, first served basis.
We’ve also got those three floodlit tennis courts, so why wait for Wimbledon when you can start today.
Drop in or call the sports centre on 01223 890248.
Mark Wilson
Sports Centre Manager

Linton Community Sports Centre
- FITNESS SUITE -
PERSONAL TRAINING // HOLISTIC THERAPY
- TENNIS & NETBALL COURTS -
- FLOODLIT ‘3G’ ALL WEATHER FOOTBALL PITCH
CHILDREN’S ACTIVITIES
RANGE OF TERM, HOLIDAY ACTIVITIES & PARTIES
01223 890248
Check out the latest info at: -
<http://www.linton-sport-fitness.co.uk>

ProClean
‘Your Complete Cleaning Solution’
*Carpet Cleaning *Rugs *Stain Removal
*Car Valeting *Caravans *Motor Homes
*Upholstery Cleaning *Stain Protection
*Floor Cleaning / Scrubbing / Sealing / Polishing
*Pressure Washing of Patios Paths & Driveways
*Domestic Cleaning * Top Ups & One Off Cleaning
*Gutter / Fascia Cleaning
*Contract Office Cleaning (Flexible Options)
TEL: 890433 Mob: 0777 375 8355
74 Bartlow Rd, Linton, Cambridge, CB21 4LY

GARDENER
N.C.H. QUALIFIED
All garden maintenance including:
Weeding – Mowing
Hedge cutting - Turfing
Garden clearance
Shed /fence treatment
Hard/soft landscaping
For a friendly professional service please call:
Darryl Tilling
01223 892133
or
07932 021277

L.B. CABS LINTON
For all your long and short taxi trips
Airports
Weddings a speciality
PHONE LINTON
01223 892986

G. DYE & SONS
GENERAL BUILDERS,
GROUNDWORK & MAINTENANCE,
CONSERVATORIES & UPVC WINDOWS, KITCHEN & BATHROOM REFITS
ALSO INTERIOR & EXTERIOR DECORATING
REFERENCES AVAILABLE
39 The Grove
Linton
Cambridge
CB21 4UQ
Tel: 01223 892089
Mobile: 07961 342887
georgedye738@btinternet.com

Free Estimates

James Bond night, shaken not stirred

JAMES Bond night was a joint event between the Linton infants' PSA, Linton Granta playgroup and Chestnuts playgroup. The event managed to raise around £1900 for the three groups. The money will help continue the fantastic work that all three groups do with the pre-school and school age children in Linton and surrounding villages.

The evening was supported by Jazzercise, Saffron Walden and ARM Cambridge who were the main sponsors and did an amazing job. It was also sponsored by many firms such as Waitrose in Saffron Walden, Cambridge Organic Food Company, The Flying Coffee Company, Stream Projects, Dynamic Gymnastics and

Mega Electronics.

The evening started off on the red carpet with kia royales at Linton village college, with towers of fire at the entrance and Bond Silhouettes in the shadows of the reception area. The casino was open all evening, which many people enjoyed, as well as a hog roast.

Gemini provided a Bond themed cabaret to get everyone in the mood, followed by an upbeat party set and a disco. Carriages arrived at midnight.

The aim of the event was to provide for the community of Linton a high quality occasion where people could get their glad rags on and relax with their friends, try their hand at the casino tables or boogie the night away.



Just a few of the happy gamblers on James Bond night

Picture by Roger Lapwood

It was an amazing evening, staff, parents and friends of the one of many the organisers three groups. hope to hold, supported by the

Natalie Morris

The flower festival is just around the corner

OUR theme is *What a wonderful World* so come and join us to make this year's event a resounding success. We are starting the festivities on Friday the 25th of June. The beautiful flower displays can be viewed throughout the weekend in St Mary's church.

Other attractions in the Infant school and on the field are as follows:

Friday evening – Barn dance and ploughman's supper.

Saturday – dog show, train rides, army assault course, target paintball, bouncy castle, LVC Y9 mini-enterprise stalls, duck race, Linton Jazz, beer tent, barbeque, balloon race, games, stalls, raffle, teddy jumps from the church tower and tea party.



One of the beautiful roses on display last year

Picture by Roger Lapwood

Refreshments will be provided in the Infant school hall from 11am.

Linton Camera club is presenting an exhibition in the pavilion behind the church.

Look out for the flyer giving times for these events and details of the classes in the dog show.

Saturday 7.30pm – a light hearted concert in the church featuring the Linton-based band Solace, the Linton buskers and solo guests.

Sunday – barbeque lunches from 12 noon in the school grounds followed by the raffle draw.

We look forward to welcoming you and your families to this fun-filled festival weekend.

Sue Mudge 892737

Fun for the family at Linton Heights summer fair

THERE will be fun for all the family at the annual Friends of Linton Heights summer fair which takes place in the grounds of Linton Heights Junior school from 5-8pm on Friday 2nd July.

As usual, the children will be running a range of stalls at pocket money prices. Other attractions include an army assault course, driving mini Range Rovers, face painting, bouncy castles, horse riding and ferret racing.

You will also have the opportunity to try out your football skills with a Beat-The-Goalie competition. There will be a Kung Fu display and many other side stalls. There will also be a barbeque and a licensed bar, as well as hot drinks, sweets and cakes.

The event will finish with a raffle offering lots of fabulous prizes to be won. This is the school's biggest fund-raising event of the year with all money raised going towards school equipment. It promises to be a fun event for all the family to enjoy so put the date in your diary now.

We look forward to seeing you there.

Friends of Linton Heights

The Crown's catch of the day

THE Crown has launched a new and exciting fresh fish specials' board available lunchtime and evenings. Delivered daily from trusted suppliers, choices include skate noisette butter, halibut poached with salmon and asparagus, mussels, crab, oysters, mixed fish grill and lemon sole.

Alongside this will be a new summer main menu reflecting the very best seasonal produce locally sourced.

A comprehensive selection of tempting dishes prepared by experienced professional chefs includes traditional Sunday lunch with great salads on hot summer days, just remember to leave room for the legendary home-made desserts.

To complement the excellent menu, the bar offers a rotating range of real ales with a recession busting rush hour pint together with a discerning wine list or a refreshing glass of Pimm's.

Head chef and proprietor Joel Palmer is always keen to get feedback and welcomes any suggestions or requests and wishes all his customers, regular and new, a happy summer.

LNT

Healthier, fresher, cleaner carpets.

Spring Special
15% Discount

Dream Clean

- Carpet cleaning and care
- Dust mite extermination and removal
- Leather cleaning and protection
- Carpets dry by the time I leave
- Free no obligation quote
- IICRC certified firm
- Happiness guaranteed - don't pay until you're happy!

Full & Current Member of NCCA

0800 6955300 or 01223 897892
www.dreamcleancarpets.co.uk

18 The Grove, Linton, Cambs., CB21 4UQ

INSTITUTE OF INSPECTION CLEANING AND RESTORATION CERTIFICATION Certified Firm

The Crown Inn, Linton
freehouse, restaurant & accommodation

"HAPPY HOUR" 5.30- 6.30pm Monday-Friday
Fish & Chips Mondays 5.30-9.30pm Eat in or take away
Pudding Club - Last Wednesday evening in every month (booking advisable)
Bargain Lunch - Order a main course and get a pudding for free.

We have a great selection of fine wines and real ales you can enjoy in a relaxed atmosphere.

Our Highly Qualified chefs will do all they can to cater to all your dietary needs. So come along and enjoy the warm welcome you will receive.

www.crownatinton.co.uk
11, High Street, Linton, Cambs Tel 01223 891759

Outside functions catered for

Chippy's Tel: 01440 702205

Traditional Fish & Chips
Serving the people of Suffolk for over 51 years

Our mobile fish & chip van is now serving the following villages

Steeple Bumpstead	Tuesday Evening	4.45-7.15
Balsham	Wednesday Evening	4.45-7.15
Linton	Thursday Evening	5.00-7.30
Kedington	Friday Evening	5.00-7.30
Haverhill	Market Square Saturday	9.00-4.00

www.chippys.co.uk 2 Strasbourg Square Haverhill Email eat@chippys.co.uk

Annette's

Beauty & Well Being

Closed Monday
Tues, Weds & Thurs 9-7, Friday 9-5, Sat 9-1
Annette, Katie & Kate warmly welcome Jane joining their team

At The Bank House
37 High Street, Linton CB21 4HS
Telephone: 01223 891900

Annette Jackson vtct iihht babtac & Reiki master



Chef's corner

TWO fish recipes for you this month, one from Joel and one from Jan Lupton at the farmers' market, we hope you enjoy them.

We are all looking forward to the barbeque season... Can someone let me know when I can put my jumpers away?

However when you all dust off the old barbies and scrape off last year's chicken satays, think of all the opportunities other than cooking bright red food that spent its former life in a remote corner of Mars.

Get yourself down to the market and buy a couple of fresh bright-eyed mackerel to cook alongside your burgers, chicken and meat pieces. Ask the fishmonger to fillet the mackerel for you and if he's got time, to remove the pin bones (although not necessary) Try to get hold of some nice fresh fruit to make a salad, always looks colourful and enticing on any table.

Summer barbie-steamed mackerel

Serves four people

4 whole mackerel filleted
1 whole orange peeled and segmented (squeeze the juice from the remainder of the orange)
1 finely sliced fennel head

For the marinade mix together;

1 tbsp olive oil and the juice of the orange, 1 tbsp of white wine vinegar, 1 tsp of Dijon mustard, 1 squeeze of runny honey, 1 tbsp of soy sauce, pinch of salt and cracked pepper, (this can be done well in advance if preferred).

Cut four pieces of tinfoil approximately 25 cm (10 inch) square and rub the dull side with a little butter. Place 1 fillet skin side down on each of the foils. Scatter the fennel and juice onto the fish fillets. Slightly fold the sides of the foil up and over the fillets to catch any juices. Pour the marinade over the fish. Lay the next fillet on top with the skin side up and splash a little white wine into the parcel.

Close the foil parcel tightly and place onto the barbeque (medium heat/coals gone white) for 10 to 15 minutes. Remove and allow to cool for 2-3 minutes and open to a plume of aromatic steam and a version of mackerel that will allow you to forget all those bad memories of the 1980s when smoked mackerel was served with a hot horseradish sauce, to try and mask the taste.

Bon appetit.

You can access all Joel's recipes at www.chefscorner.co.uk

Joel

Braised cod with ginger and spring onions

Serves four people

4 fillets of cod or pieces of cod loin approx 225g each
Sea salt and freshly ground black pepper
2 tbsp vegetable oil

15g butter
15g fresh ginger, peeled and thinly sliced

1 medium carrot, thinly sliced
2 sticks celery, thinly sliced
4 cloves garlic, crushed

200ml fish stock, homemade or with fish stock cube
2 tbsp unrefined caster sugar
3 x tbsp light soy sauce

1 tsp cornflour
8 spring onions

Season fish with salt and pepper and in a large frying pan heat 1 tbsp oil and the butter. When this is very hot seal the fish for 30 seconds on each side, then remove from the pan.

In a heavy pan heat 1 tbsp of oil gently. Add the ginger, carrot, celery and garlic stirring constantly. Add half the fish stock and cod fillets. Cover and braise over low heat for 10 minutes.

In a bowl, mix the sugar, soy sauce and remainder of the fish stock together with the cornflour. Pour this on top of the fish and cook for a further 2 minutes. Add the spring onions. Serve immediately with rice.

Jan Lupton

1 2 3 4 5 off to Kumon I go, at maths and English I'm a pro, all my answers are right and my future is so bright!

Maths and English Study Programmes

Kumon can help your child progress with their maths and English studies, boost their confidence and help them shine.

Every day Kumon helps children of all ages and abilities to realise their true potential. With over 600 centres nationwide, it's convenient too.

Contact your local Instructor today.

Mrs Karen Tumber
Linton Study Centre
01223 893578

kumon.co.uk

KUMON
Every child can shine

Students 20% off

THE ROOM

37 Bartlow Road, Linton
Tel: Pippa (01223) 890890

Special Kids Prices

OPENING TIMES

Mon	Closed	Senior Citizens
Tues	9-5 pm	Tuesday & Wednesday
Wed	9-7 pm	Late opening until 7 pm on
Thurs	9-7 pm	Wednesday & Thursday
Fri	9-5 pm	
Sat	9-3 pm	

In your own time



Spin doctor: Caroline in creative mode
Picture by Roger Lapwood

CAROLINE Connell has done a number of different things in her life, some of them very hands-on and practical like bringing up four children and running a small holding *The Good Life* style, when she learned how to milk their cow and make butter and cheese, as well as growing huge quantities of vegetables. Later she took a degree at what was then Anglia Polytechnic and trained as a counsellor. In her last job she worked in Student Support Services at what was then called Anglia Ruskin University on the counselling team.

When she retired two years ago she felt the need to develop a different, creative side of herself and did a full-time one year course – Access to Art – at Cambridge Regional College. This gave her a taster in many different areas of art. Since then she has kept her hand in by attending a weekly course on textiles at the Whitehouse Arts in Chesterton. Her interest in this field has expanded recently and she is now learning to spin from raw fleece (rather smelly sometimes), and to knit what she spins and is also currently interested in felting, making some of the items in 3D.

She walks much more than she used to since acquiring her characterful little dog Mabel, who waits patiently while Caroline works on her allotment. Since, sadly, Linton has no allotments yet, she looked further afield and found one in Ashdon. It was very neglected, but she is now getting it under control with the help of some kind friends. She gets a great kick out of subduing the jungle and bringing home her own produce. Although Caroline has to drive to Ashdon, which, as she says, is not very economical, the idea is not so much to save money as to watch things grow and muck about in the soil. Who needs a gym when you can get more than enough exercise like this, and loads of fresh air as well.

LNT

DESIGNER DRAPES

NEW line

of voiles & fabrics

BLINDS & CURTAINS

all types made to measure & ready made

Linton, Road Hadstock CB21 4NU

www.designerdrapescurtains.co.uk

01223 890556

AJB

Fencing

All types of domestic fencing - decking paving - landscaping

Garden services

01223 894795

07813 070542

www.ajbfencing.co.uk

Portfolio Available

GLENWOOD

BOLTS & SCREWS LTD

www.glenwoodbolts.co.uk

SUPPLIERS OF QUALITY FASTENERS, FIXINGS & SILVERLINE TOOLS

Unit 2 Lintech Court

The Grip Industrial Estate, Linton

Cambridge, CB21 4XN

Tel: 01223 892095 / 893931

Fax: 01223 894122

HAIR BY JO DENNY

Women | Men | Children

41 Linton High Street

(Behind North's Bakery)

t: 01223 893 285

MOPS HAIR SALON

CHRISTOPHER MARKHAM

HOME & GARDEN SERVICES

Interior/Exterior Decorating

Fencing, Guttering

Turfing, Garden Clearance

Lawn & Hedge Cutting

Decking & Patio Cleaning

Patios & Driveways

Call on

(01223) 892889

or 07973294946

No job too small...

Kristian, a winner at fencing in the world junior championships

A STUDENT at Linton Village College (LVC) has taken part in the world junior fencing championships after picking up a silver medal at the European championships in Athens.

Kristjan Archer, 16, from Little Abington, was part of the Great Britain men's foil team which competed in the European Cadet (Under-17) Championships at the Olympic arena.

After winning earlier rounds, the team, which also included Alex Tofalides, Kareem Cheriton and Alex Savin, beat France 45-38 in the semi-final, with Kristjan scoring an impressive 17 points. In the final they came up against a strong Russian team, including the gold, silver and bronze medallists from the individual foil event, but still managed a respectable 33-45 defeat to take the silver medal.

Kristjan took up fencing at the age of seven and is ranked second in Great Britain in his age group. He is a member of the Cambridge Sword club and trains for several hours each week in London and Cambridge, as well as taking part in competitions at weekends.

In the last year, Kristjan has taken part in competitions in Germany, Poland and Slovakia, and following his success in Athens was selected for the Great Britain team at the World Cadet Championships in Baku, the capital of Azerbaijan, in April.

"Although I did not win a medal at the world championships, I am hoping the experience will stand me in good stead for a better result next year," he says. "Ultimately I am aiming to take part in the Olympic Games. Although London 2012 is probably a bit



From left to right: Alex Savin, Kareem Cheriton, Kristjan Archer and Alex Tofalides
Picture supplied by Tony Kelly

too soon, if I train hard and continue to achieve success then Rio 2016 is a real possibility."

Tony Kelly

Trees, the most important plants in the world



The unusual handkerchief tree pictured recently at the Botanic Garden
Picture by Wendy Foster

PROFESSOR John Parker, Director of the University of Cambridge Botanic Garden, joined the gardening club for its final meeting of the season to describe the role of trees and the botanic garden. Professor John Stevens Henslow established the garden in 1831. He believed that trees were the most important plants in the world and used them to create the garden's framework.

Today as you walk down the main avenue of cedars the oldest Giant Redwoods in Britain can be seen with the first trees of the Dawn Redwood grown outside of China. The avenue is designed to show the variation within the single species of Black Pine. Henslow's famous pupil Charles Darwin became so fascinated by the study of variation patterns that his lifelong studies lead him to understand the origin of species.

Henslow only lived to see his trees reach a height of twenty feet but he did leave us his dream. I'm sure we will all be visiting the gardens soon with a new appreciation for what he was trying to show us.

On a more local note, thank you to everyone who generously gave their time, plants, cakes and produce to make this year's plant sale so successful despite the unseasonable weather. Let us hope that the weather will perk up soon so that we can enjoy the new additions to our gardens.

The next gardening club event will be the 68th annual show on Saturday 31st July. Schedules giving full details are now available from Susan Anderson 891623 and Alex Todd 892979. Entry forms must be received by Susan Anderson no later than 8pm on Thursday 29th July. A quick reminder for the photographers amongst you. The subjects this year are: Foliage, Winter, An entrance, A holiday.

Kirsten Newble 892425, lgcsecretary@yahoo.co.uk

Governors focus on behaviour and community

AS a governor at Linton Heights, I would like to share with you two significant projects that we are working on at the present time. One important focus for our governors and staff at present is our Behaviour Policy. Although our existing policy is good, we feel that we need to improve it to add far more clarity to the steps taken in the management of behaviour so that everyone who uses it or comes into contact with the policy understands why certain actions have been taken.

In order to ensure that we gather as much relevant information to support the enhancement of our policy, we are involving pupils, parents, staff and colleagues from the other Linton schools in the process. Observations are being carried out in classrooms across the school and our working party, which includes two parents, is currently developing the policy which we hope to introduce in September. The governors and senior management team at Linton Heights know that this is an important next step in the management of behaviour at the school.

Another area of great focus at the moment is our Community Cohesion Policy. Schools are an integral part of the community they serve and, in Linton, we are incredibly lucky to have four very good schools with focused, hard working leaders. The aim of our policy is for our children, their parents, the local community and wider community to gain a better understanding of each other, which can only be a good thing. Learning about diversity and working together is a positive step that bodes well for the future community as a whole. It will also provide an opportunity for the community to become involved with the school, whether they have children at the school or not and to be a part of the education of children.

There is no greater satisfaction and insight into school life than joining in. At the moment we have vacancies for the following governors; two parent governors and one community governor. You do not need to be a parent of a pupil at the school but have an interest in the education of our children. As the DCSF (Department for Children, Schools and Families) has launched a campaign for ALLIES (A Local Lawyer in Every School) we are also actively seeking any solicitors that may have an interest in becoming a governor. If you may be interested in becoming a governor please contact the school office for further details; Tel 892210, Fax 890059 or email office@lintonheights.cambs.sch.uk

Keren Coulson, Governor

PAULINE'S

CHILDCARE IN LINTON

FOR UNDER FIVES

Ofsted registered

Monday – Friday

Ring for details

01223 891890

LINTON VILLAGE MOTORS

(situated in Great Abington opposite Granta Park)

www.lintonvillagemotors.co.uk

Tel: 01223 830550

- MOT testing
- All makes of vehicles serviced and repaired
- Tyres at competitive prices
- courtesy car provided
- Polite and friendly staff

Mon-Fri: 8.30am-5.30pm

Sat: 8.30am-12.30pm

Music Lessons

Piano Organ Singing Cello

Lessons given in Linton.

Students at all ages—enquire for terms. Take your playing to the next level!

David Parry-Smith ARCO

01223 894715

david@parry-smith.co.uk

Carpentry, Plumbing, Tiling

Door / Window Replacement

Kitchen / Bathroom Refitting

Fencing, Decking, Gardening

Painting, Decorating

Flat Pack Assembly

Property Maintenance

Steve Jackson

Aerial Installations & Upgrades

stevejacksonltd@hotmail.co.uk

All domestic appliance repairs, 15 years industry experience.

Very reasonable rates.

Quick & reliable service.

Steve Jackson

(Home) 01223 893114 / 893896

(Mobile) 07963 854653

01223 890 965

THE ONLY NUMBER YOU WILL EVER NEED

LINTON CABS

"THERES ONLY ONE LINTON CABS"



The Derbyshire Post



OF all the times in the school year, perhaps I love May the most. The cherry blossom on the drive is always a frothy joy to behold, the students return in happy numbers to play and picnic on the school fields and the light holds long enough to make you feel that there is still something to be squeezed out of the day even after the longest of Governors' meetings comes to an end.

This year it has been especially pleasant because the monstrous sight of the dilapidated Vic Hallam is no more and you can see the pleasing design of the Newton building clearly from the front field. It actually glints in the sun. The demolition was wonderful. There is no other way to describe it. It took three weeks in total and became a popular spectacle at breaks and lunchtimes from the various demolition vantage points. When the first window was smashed a great cheer from the students went up. We had anticipated some kind of wrecking ball would do the job, but the machine that took the building apart was modelled on a creature from the Jurassic period and it literally swivelled its terrible head, opened its jaws and then bit into the walls, chewing up the pieces into a gravelly pulp. The ground beneath is so undisturbed that Nick the archaeologist has been hovering around with great excitement. The archaeologists will be digging for the rest of the summer.

We took advantage of the sunny weather and the blossom to take a whole school photograph. This involved 820 children and 80 members of staff taking up their positions on a vast rig that Van Coles, the photographers, had set up on the field. When we last took a whole school photograph (10 years ago), the college had around 250 fewer people in it, so we were a little anxious about whether they could get us all into shot. We shouldn't have worried and the final result will be an especially nice memento for those children leaving us this year.

Finally, a few words about that outgoing Class of 2010. These young people are a real tribute to our community. When I first met them, they were shiny-faced 11 year olds and they now look so incredibly grown up. I have never known a group of young people who are more polite, more considerate of others, more confident or articulate. Their parents have done a great job in bringing them up, our local primary schools gave them a terrific start to their education and we, at LVC, did our very best for them too. We will miss them. Good luck folks, and keep revising.

Caroline Derbyshire

Second place for Linton netballers

LINTON Ladies Netball club has recently managed to come second out of 12 teams in a friendly netball league held at Comberton village collage throughout winter. The final result came down to the wire as the two teams who were in a position to win the tournament met in the final match. Each team had played two short matches that evening before going head to head in a decider. Unfortunately the Storm team managed to edge ahead before the final whistle and managed to clinch the league title.

Congratulations to all those who took part, and thanks for turning up despite the extreme weather on some evenings. The ladies team is currently competing in the Cambridge District summer league held at Milton and are hoping to build on their successes in a more competitive atmosphere. The club meets every Monday evening at 7.15-8.30 pm in term time on the netball courts at Linton village college and always welcomes new players regardless of skill level or fitness. If anyone fancies coming along to try it out please contact Bridget on 01223 892299 or just turn up.

Lisa Smith

BED and BREAKFAST
ANN & GEORGE PEAKE
Linton Heights
36 Wheatheaf Way, Linton
Tel: (01223) 892516
Comfortable & friendly

Traditional Acupuncture

An Ancient and Trusted Way Of Healing

Some complaints treated by acupuncture:

- | | | |
|--------------------|------------------------|--------------------|
| * Stress/Anxiety | * Pain (relief of) | * Insomnia |
| * Low energy | * Back pain/Sciatica | * Asthma/Allergies |
| * Depression | * Arthritis/Rheumatism | * Digestive |
| * Headaches | * Stiffness/Tension | * Menstrual |
| * Colds/Low immune | * PMT | * Menopause |

Therapeutic Massage

Beat Stress, Recover More Quickly from Injury, Feel Energised!

Practitioner

Peter White MSC, MBacC, Dip Massage, Dip TCM China, Insured
For a free initial consultation and bookings call: 0845 430 9120



Heckford Norton

Heckford Norton Solicitors are a well-established, approachable and progressive law firm committed to providing clients with an individual personal service.

*Agriculture • Business
Commercial Property • Crime
Elderly Issues • Employment
Family & Divorce • Litigation & Disputes
Notarial • Residential Property
Wills, Trusts & Estates*

Heckford Norton
Solicitors
18 Hill Street • Saffron Walden • Essex CB10 1JD
Tel: 01799 522636
www.heckfordnorton.co.uk



The Way We Were

by Garth Collard



The workhouse in 1900

and cost under £5,500, accommodating 230 paupers.

Elected guardians administered the workhouse and distributed help for the poor. They met weekly to question the master of the workhouse about his day to day administration

Looking at the outside of the building you see that large quantities of local flint were used, which was cheaper than red bricks. However the main walls were of brick costing £2.15 per 1,000, windows

were Newcastle glass, a far better quality than in most houses. The building was usually square with a central courtyard divided into four or six sections. It's main purpose was to deter the able-bodied and force them back to work. Families, genders and age groups

were separated, paupers being housed in different areas

The guardians distinguished between deserving poor (the very old, sick, widows and orphans) and the undeserving poor (lazy unemployed adults, teenagers, single mothers and their children, and

tramps/travellers, all called vagabonds). Workhouses boosted local trade as all food and furnishings were purchased locally, the master accounting for every item. When the poor were admitted they were searched and made to take a bath. Heads were examined for lice, and clothing stored to be returned if they left.

Inmates were well fed, consuming better food than they could have afforded at home. Everyone slept in dormitories on iron beds with straw mattresses. Although material conditions were better, inmates had lost their freedom. Everyone who was fit had to work, the men making shoes, pottery and iron goods, Women worked in the laundry, did sewing and cooked and served meals. Teenagers went out into Linton to earn money for the guardians. Boys



Symonds house, formerly Linton union workhouse in 1900

served as apprentices in local industries, girls as servants in larger houses, acquiring a work ethic and being trained to hold jobs when they grew up. If you were poor the whole family had to enter the workhouse, adults could only leave if the family went with them.

Garth Collard

PLANNING APPLICATIONS

S/0483/10/F Mrs Marion Howard, Land to the north of 3 Horseheath Road, Linton. Dwelling (revised design to include conservatory)

Elite
Wedding Photography™

Formerly Julian's Photography of Linton

Tel: 01223 892056

Professional, affordable, wedding photography.

WWW.ELITE-WEDDING-PHOTOGRAPHY.CO.UK

TIM PHILLIPS & Co.

Accountants

Independent, specialist service for:
**Small Businesses - Self Assessment
Personal Taxation**

EASY, FREE PARKING
Initial consultation FREE with no obligation

Copley Hill Business Park, A1307 Babraham
Tel: **01223 830044**. www.TPaccounts.co.uk

PLUMBLINE

Plumbing & Heating
RELIABLE COMPETITIVE
FRIENDLY SERVICE



Linton
01223 893903



Don't delay call today

the flower boutique

61a high street, Linton

01223 891740

*The freshest seasonal flowers for your home,
friends and celebrations. Bespoke design
service for weddings and funerals.*

www.theflowerboutiquelinton.co.uk



Units 3/4 Lintech Court, The Grip Industrial Estate, Linton, Cambridgeshire, CB21 4XN
Tel: 01223 894140 Fax: 01223 890035 Email: info@mckenzie-haywards.com

McKenzie & Haywards Garage

MOT by appointment while you wait.
Servicing, Collection & Delivery Service

Units 3/4 Lintech Court
The Grip Industrial Estate
Linton, Cambridgeshire, CB21 4XN
Tel: 01223 894140
Fax: 01223 890035

JUSTIN PEARSON

Reliable, High Quality
Painter & Decorator
for Interiors & Exteriors
Free Estimates
Tel 01223 565310
Mobile 0775 2469130

NRS CARPETS



HOME SELECTION
FREE MEASURING &
ESTIMATING
All types of flooring
available

Tel: 01223 893634
Mobile: 07885 173113



Parish Council Matters Chairman's annual report

Parish Council Matters is written, edited and published by the Parish Council with the support of the Linton News Team.

WOW! Where did the year go? It has been a very busy year for Linton, and the parish council and residents of Linton have had many issues to face. The biggest single issue has to be the Catley Park wind farm application – Catley Park, although well-known many years ago, was not a place that was familiar with newer residents, but everyone now knows its location. I would like to mention the teamwork that both the parish council and residents showed, in representing the village at the public inquiry. It was incredible, whether people were for or against the scheme, they made sure that the Planning Inspector understood the impact on Linton. The inquiry resumes for its final stages in September with a decision expected by the end of the year. For me the highlight of the inquiry was working with Corrie Newell, conservation officer at South Cambridgeshire district council. Her knowledge and enthusiasm ensures, I hope, that the historic nature of Linton is in safe hands.

On our parish council agendas this year, drains and trees have been regular items for discussion. Throughout the year there has been a considerable amount of tree planting, thanks to Cllrs Bald and Rossiter and Mrs Anderson. Hopefully the drainage issues on the second meadow of the Recreation ground have been resolved.

Among the new residents who moved to the village, we also have a new rector of St Mary's, the Reverend Dr Steve Griffiths. I warmly welcome him to the village and hope that he will be living in Linton in the near future. There have been a few new properties built in the village too. The Newdigate development is well under way, and the controversial Flaxfields development is causing major problems for the residents of Symond's Lane and Back Road. However, on a more positive note, the new build of the phase 1 science block/gym/community room/dance studio at Linton village college was completed. The building actually blends well with the listed building, and also holds the most

amazing facilities for our young people and we certainly look forward to seeing phases 2 and 3.

Some matters have not been resolved this year. The parish council is still attempting to sign the lease for the Coles Lane car park, to protect it as a village resource. We are also meeting a brick wall in our search for allotments. We have been delayed by South Cambridgeshire district council and I think it is fair to say our patience is wearing very thin and we will be calling an allotment working party meeting in the near future to take further action.

The weather has been eventful; we had the August storms with flooding in the High Street and the coldest winter for many years. The weather has played havoc with the road surfaces although parts of the High Street and Back Road have now been prioritised to be resurfaced.

Our clerk became a local media star in March, when a hand smoke grenade was found on the Camping Close. Colin Tofts, our village custodian, found it and kindly took it in the office to hand in to Sue! Sue obtained advice from South Cambridgeshire district council, and then the police, and within an hour the bomb disposal squad was dispatched from Colchester! The army made it safe on site at the village hall and took it away with them. Not sure how it came to be on the Camping Close but it certainly meant radio interviews, and even made the national press.

The Camping Close village green application is still ongoing, and the parish council is still waiting to hear whether the matter will go to public inquiry. A recent judgement in the Supreme Court means that the county council assets department are reconsidering their objection. New evidence to support the parish council's claim has come to light from the minute books. In 1946, the parish council recommended to Cambridgeshire county council three open spaces to be preserved in the village. One of those was the Camping Close where it was specified that it needed preserving

for additional recreation facilities – these minutes have now been sent to the county council.

So, as I conclude my annual report, I would like to say a few words of thanks. Can I thank our four members of staff, Sue, Anne, Colin and Ivy, for their work throughout the year. Also thanks to my fellow parish councillors, particularly my vice chairman Cllr Bald. Can I also make special mention of Cllr Potter and Cllr Hickford for their support. Cllr Potter who has been a constant source of advice on chairing meetings, and Cllr Hickford who has the ability to put my incomprehensible ramblings into something more grammatically correct and logical. Finally I would like to say the biggest thank you to two people, who without their support, I would not have been able to be chairman of the council. They are both now very knowledgeable on parish matters, and they are always willing to give their point of view or act as devil's advocate. They are always happy to help me in my duties as chairman, and help me investigate any issues or problems that residents report even if it means them walking a couple of miles around the village.....so thank you to my children Rebecca and Andrew.

Cllr Esther Cornell

Annual parish meeting

THE annual parish meeting this year was certainly a lively affair – the usual 25 minute meeting was replaced by a meeting that lasted nearly two hours. The local charities

were celebrated, and residents expressed their views on the Flaxfields development. Can I take this opportunity to thank everyone who attended.

Cllr Esther Cornell



Nichols Court: the new extra care scheme development in Flaxfields

A view from the back garden of Mr and Mrs Dew, residents of Symond's Lane

Picture by Roger Hickford

Parish councillor vacancies

There are vacancies on the parish council for councillors. If you are interested and would like more information please contact the parish council office.

LINTON PARISH COUNCIL

Linton Village Hall, Coles Lane, Linton, Cambridge CB21 4JS Tel: 891001

Clerk to the council – Mrs Sue Parry
Email: lintonpc@btconnect.com
Website: www.lintoncambridgeshire-pc.gov.uk
Office hours: Monday 9am–12noon and 4–5.30pm, Tuesday–Friday 9am–12noon
Or by appointment
Dates for full council meetings:
June 3rd and 17th, July 1st and 15th 2010
All meetings held at the Cathodeon centre following the public forum commencing at 8pm

Roses Beauty Salon
WEST WRATTING
Facials, Electrolysis, Waxing, Manicures, Pedicures, Massage, Eyelash Tint, Ear Piercing. Mobile service available
Rene Guinot Agent
Tel Carol
01223 290492
or 07860 810689

Russells Estate Agents

'We Let Our Boards Speak For Themselves'



russellres.co.uk

SOLD
01223 493420

Sales & Lettings properties required in
LINTON.
Call Glenn Coombe at the Sawston Office on
01223 493420

Email us at
sawston@russellres.co.uk
Website: www.russellres.co.uk

Ballet, Tap and Modern Dance

Linton Village College Sports Centre



Various classes for 2 ½ yrs upwards
Taught by ISTD qualified teacher
Saturday afternoons

Please call Alison on 01787 463613 for details

Classes also held on Tuesdays in Balsham

KJL Roofing

All roofing repairs, lead-work, renewal of pitched or flat roofs

New guttering, repairs/unblocking
Free estimates before any work commenced

25 years + Experience
Tel: 01223 892542
Mob: 07958 618440

STEVE WEBB Painter & Decorator

Over 30 years experience

CITY & GUILDS CERTIFICATES

Montford Barn
Horseheath
Tel: 01223 893864
Mobile: 07772991373

Benten & Co.

Chartered Certified Accountants

We are a friendly, well established firm, large enough to deal with most accountancy and taxation matters.

Please telephone for an initial consultation (without obligation)

Abbey House, 51 High Street, Saffron Walden
Telephone 01799 523053
www.benten.co.uk

KELVIN SCHOOL OF MOTORING



DOE ADI and MIAM
Pass Plus

Instructing for 35 years!

For bookings
01223
892263



16 Back Road
LINTON

HOUSE & GARDEN MAINTENANCE

Quality Painting and Decorating Service

Les Westlake
Mobile: 07929 501101
Tel: 01223 892866
leswestlake@aol.com

ABBREVIATED minutes of the meeting of the parish council held at the Cathodeon centre on Thursday 8th April 2010.

Present: Ms E Cornell (chair), Mrs E Bald (vice chair), Dr B Cox, A Gore, R Hickford, J Linsdell, G Potter, Dr J Rossiter, Dr V Urwin and Mrs S Parry (clerk). Mr C and Mrs S Matthews were also in attendance.

Apologies for absence were received from councillors Gee, Hammett, Hunt and Krarup.

Declaration of interests from members: Cllr Bald declared a prejudicial interest under the Mobile Warden Scheme. Cllr Linsdell declared a prejudicial interest as a trustee of the Parish Charities. Cllr Cornell expressed a personal interest as a parent of a child attending the Junior Cricket Club. Cllr Hickford declared a prejudicial interest in Linton Action for Youth (LA4Y) as the council representative and left the room during the discussion.

Matters arising from the minutes of the meeting held on 18th March: The county council had confirmed that the highway in phase 2 of Paynes Meadow had not been adopted. Clarification had been received from Cambridgeshire & Peterborough Association of Local Councils (CPALC) on S137 payments and a policy would be formulated. Cllr Bald reported that trees had been planted along the verges of Bartlow Road, a black mulberry had been planted on the Recreation ground and the hedge planting in the Cemetery had been completed.

Presentation by Su and Chris Matthews regarding the possible extension and refurbishment of the Pavilion. Su and Chris had identified funding sources most of which required plans and full costings before a decision could be made. These included Sport England, the Football Foundation (FF) through the Football Association, English Cricket Board (ECB), Big Lottery Fund, and possibly the Cambs Community Foundation. It had been apparent by talking with Sawston, who had recently commenced work on a new pavilion, that both the FF and ECB were required to be involved at the first stage of planning. The main areas in most urgent need of improvement were outside storage and the kitchen and toilet facilities. Cllr Hickford thanked Su and Chris for their enthusiasm and work so far on this scheme. The issue of parking would need to be investigated and addressed at an early stage. Permission was granted for Su and Chris to take the scheme forward by obtaining quotations for the cost of the plans. Su requested that if councillors had any further information or ideas, these should be forwarded to them.

Reports from co-ordinators: Open Spaces: Cllr Bald reported that the damaged Palmers Close sign had not been replaced. Five ash trees had been donated and these would be planted in areas already agreed.

Recreation ground: Cllr Potter raised concerns regarding the condition of the bowling green. It was agreed to ask Cllr Krarup to contact the bowling club to ascertain why the green had not been cleaned.

Rights-of-way: A response from the Ramblers Association to proposed changes in public rights of way had been received. The co-ordinators had met to discuss this report and the landowners had been contacted.

Written reports from council representatives: Cllr Cornell reported on a meeting with Hildersham parish council and the county council regarding Back Road and its use by HGVs. It had been agreed at the recent police panel meeting that a diversion route for the A1307 had become a priority being the only strategic HGV route in Cambridgeshire without a designated diversion route.

Consideration of Section 137 funding requests: The following payments were agreed:

	£
Mobile Warden Scheme	3500
ATC	1200
Carpet Bowls Club	250
Chestnuts Playgroup	500
Children's Book Festival	3000
Granta Grapevine	175
Granta Playgroup and Toddler Group	500
Junior Cricket Club	2500

Linton Action for Youth (LA4Y)	pending decision
Beacon Community Trust	1280
MAGPAS	1500
Parish Charities Brinkman, Butt & Harrison	750
Unallocated	490

Correspondence received and for discussion: A request from the county council to support the Summer Reading Challenge 'Space Hop' was considered and it was agreed that a sum of £200 be paid. This would be taken from unallocated funding.

ABBREVIATED minutes of the meeting of the parish council held at the Cathodeon centre on Thursday 22nd April 2010.

Present: Ms E Cornell (chair), Mrs E Bald (vice chair), Dr B Cox, A Gore, B Hammett, R Hickford, Ms T Hunt, J Linsdell, G Potter, Dr J Rossiter, Dr V Urwin and Mrs S Parry (clerk). County and district councillor J Batchelor, district councillor Mrs T Bear and Mrs K France (press) were in attendance together with 10 members of the public.

Public forum: Mrs Dew, a resident of Symond's Lane, spoke of her despair regarding Nichols Court, the new care home in Flaxfields. Her house and garden were completely overlooked on every aspect by balconies and eighteen windows. The security and ground floor lights illuminated her house and garden. She asked whether this development would be entirely for the elderly as there appeared to be many steps in the courtyard. These concerns were echoed by eight other members of the public. The chair responded that the parish council had strongly objected to the application and had written letters of complaint to South Cambridgeshire district council (SCDC) but had had no response. This matter was discussed later in the meeting.

Apologies for absence were received from councillors Gee and Krarup.

Declaration of interests: Cllr Hickford disclosed a personal and prejudicial interest for the items of correspondence relating to Aztecs JFC and Linton Action for Youth and left the room during the discussion and decision on these matters. Cllrs Gore, Hammett and Bald declared personal interests regarding the item on Flaxfields as the building could be seen from their properties.

Matters arising from the minutes of the meeting held on 8th April: The chair reported that the Inspector of St Edmundsbury's Concept Statement had agreed that Access A1307 would be given a chair to speak at the inquiry.

Cllr Bald reported that three ash trees had been planted on land at the junction of Symond's Lane and Back Road and two had been planted in Stanton's Lane.

Update on Nichols Court, Flaxfields: Cllr Bald had met on site with Ray McMurray (SCDC planning officer) and Simon Edwards (architect for the developer). The meeting had been called following several complaints and ongoing problems reported by residents living adjacent to the building. Initially an enforcement officer had been asked to visit the site to look into the design, colour, height, lighting, measures to safeguard privacy etc. Residents were not happy with the response received and hence this meeting had taken place. The major complaints were light pollution and nuisance, surface height, noise, overlooking and concerns regarding the narrow enclosed footpath from Symond's Lane. It had already become evident that this was a meeting place for undesirables. Many of these problems had only become evident when the blue hoarding had been removed.

It was resolved that an urgent meeting with the district council, the developer and residents be called by 4th May to discuss these issues. If no meeting were forthcoming the parish council would issue a formal complaint to the district council. Cllr Bald urged residents to write to the district council enclosing photographic evidence and to also contact Mr Wilson at the Environmental Health department.

Report from the county councillor: Cllr Batchelor confirmed that resurfacing would take place in the High Street and Back Road along the one way system and also the top and bottom of Coles Lane. The section from the A1307 to the Crown had not yet been agreed. This work would obviously result in road closures.

Report from the district councillors: A request by the parish council for a replacement Palmers Close sign was refused due to lack of funding.

Consideration and adoption of updated Cemetery Regulations: Cllr Rossiter proposed that following minor amendments the Cemetery Regulations be adopted. The proposal was seconded by Cllr Hickford and resolved by the meeting. Resolved.

Update on Heritage Trail: Cllr Bald proposed that the siting of approximately 20 way markers and three to four finger pointers be agreed as per the previous report. The proposal was seconded by Cllr Hickford. A vote took place with seven votes in favour and three abstentions. Proposal carried.

It had originally been suggested that the map board lectern be sited in front of the village sign. However Corrie Newell, principal conservation officer, felt that the sign should stand alone and the best place to site the lectern would be between the bus shelter and the sub station. The lectern would be made from oak to match the village sign. Cllr Bald proposed that this be the site to be requested in the planning application. The proposal was seconded by Cllr Hickford. A vote took place with six votes in favour, one vote against and three abstentions. Proposal carried.

Written reports from council representatives: As an outgoing councillor, Cllr Rossiter had issued a report regarding trees in the village.

Cllr Rossiter had spoken with a resident regarding the possible removal of the willow tree in the cemetery and had explained that it had been her idea for its removal as the debris from the tree was affecting the ashes plots. She had suggested that new planting took place in that area on the other side of the hedge to reduce the impact if the tree were to be removed in the future.

Correspondence received and for discussion: A request for a donation had been received from Aztecs Junior Football Club. Cllr Bald proposed that £50 be given. The proposal was seconded by Cllr Linsdell and resolved by the meeting. Resolved

The Chair read out an email from Linton Action for Youth (LA4Y) which stated that they would work in partnership with the parish council and would welcome a representative from the parish council to the meeting on Tuesday 29th June at 10am in the Drop In centre and would expect that the representative would make a constructive contribution to the organisation as had very much been the case in the past. Cllr Hickford replied that it was good to see that the situation was progressing and partnership and communication had begun.

Cllr Potter proposed that in light of the proposition of 8th April agenda item being fulfilled in that LA4Y and the parish council are corresponding with each other and addressing points referred to in debate, that payment of £5000 be made in full to LA4Y. The proposal was seconded by Cllr Hammett who requested a recorded vote. For: Cllrs Potter, Cox, Rossiter, Gore, Urwin, Hammett, Hunt and Linsdell. Against: None. Abstentions: Cllr Bald. No vote: chair. Proposal carried.

SCDC had served formal notice of a Tree Preservation Order (TPO) on St Mary's church. Cllr Cox reported that the parish council should object strongly to this order as the sucker limes had caused the collapse of the southern boundary wall, the gate had had to be re-hung, pillars had recently been rebuilt at the entrances in Church Lane and the school and the structural engineer's report. At the recent annual meeting of the parish church the congregation agreed that they would be happy to see the trees removed. The parish council would be unwilling to rebuild the wall whilst the trees were there. Cllr Cox proposed that the parish council object to the TPO. The proposal was seconded by Cllr Gore. A vote took place with seven votes in favour, one against and two abstentions. Proposal carried.

Reports from councillors (for information only): Cllr Bald asked that anyone with memories of attending Linton village college contact them as part of their Heritage Project.

The chair thanked the outgoing councillors, Cllr Gore, Cllr Urwin and Cllr Rossiter, for all their hard work over the years.

Note: Copies of the full minutes, reports and documents referred to above can be inspected at the parish council office.

Chapel

Independent Financial Advisers

SPECIALIST ADVICE ON
Pensions - Investments - Mortgages - Protection
Personal Financial Planning

FREE Initial Consultation & Without Obligation



Ian Cross DipPFS
01223 892821
email: Chapelifa@btinternet.com



De-Salis House, 6 Hillway Linton, Cambs, CB21 4JE

A Member Of Sesame limited Which is Regulated By The Financial Services Authority
YOUR HOME IS AT RISK IF YOU DO NOT KEEP UP THE PAYMENTS ON A MORTGAGE, OR ANY OTHER LOAN
SECURED UPON IT. WRITTEN DETAILS ON REQUEST

B Haylock

Wood Flooring
&
Carpentry

Supply and installation
Free quotations

Home viewing
of samples

Mob: 07734057520
Tel: 01223 890418



"Little Hands" Linton & Bartlow
Three Hills Farm
Bartlow

Offers preschool care and education for children - 2 years to school age

High staff to child ratio

Excellent Ofsted report

Sessions can be booked flexibly throughout our nursery day 9am-4pm during term time.

For children old enough for funding (term after their 3rd birthday) 15 hours of sessions can be taken each week with no charge.

Optional holiday Clubs available for children aged 2 - 8 years. Optional early starts and late finishes.

For further details contact:
Marion Kelly nursery manager 01223 897945 E-mail: lh-bartlow@btconnect.com

"Little Hands" is also at Bourn, Melbourn and Newton, visit the website at www.littlehands.co.uk

DACRE LONG

Local Painter and Decorator

66 Chalklands, Linton

Professional work to highest standard for over 15 years

Trade and Private Customers

Free quotes with written specification

Phone 01223 893176
or 07837513837

Discounts for Senior Citizens



CHRIS ABRAMS
CARPENTRY & BUILDING SERVICES

A high quality and competitive service offering you the skills and experience to help you maintain, improve or extend your home.

Tel: 01223 897236 Mobile: 07931 685774



Grantatech
Computer Support for Business and Home

Now refilling Ink Cartridges while U wait!

Online remote repair service from £10

TOSHIBA LAPTOPS FROM £349!





41 High Street, Linton
Tel: 01223 893269
Email: info@grantatech.co.uk
www.grantatech.co.uk



Watch batteries and straps fitted while you wait.
Jewellery repairs including sizing and polishing.

All repair work carried out on the premises by a professional with 40 years experience.

We stock a selection of:
Silver Jewellery • Photo Frames •
Collectables • Toiletries •
Greeting Cards • Gift Wrap



61 HIGH STREET, LINTON, CAMBRIDGE, CB21 4HS
TEL: 01223 894225