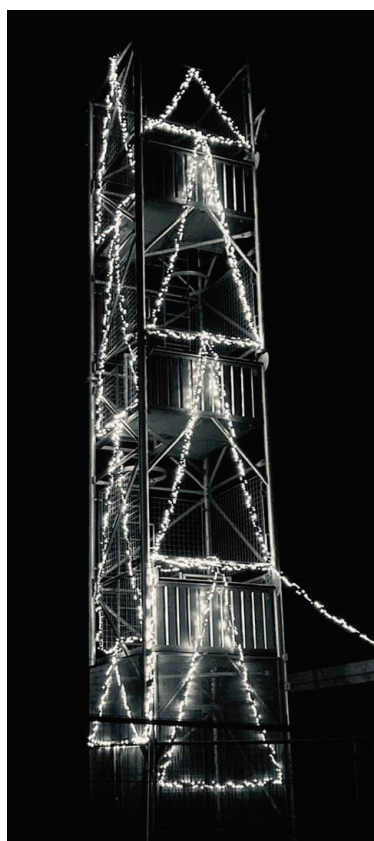


Vaccines on the way for Granta patients

At the time of writing, the COVID-19 vaccine delivery has just begun, with the first vaccines being given on the 8th of December. It suddenly feels like there is hope and a light for us all at the end of this very long, dark tunnel. The vaccine is currently being offered to patients in priority groups first, namely: People aged 80 and over who already have a hospital appointment in the next few weeks, people who work in care homes, and health care workers at high risk. It will be offered more widely as soon as possible. For further information on priorities and delivery schedules please go to www.nhs.uk. The general public are

asked not to contact their GP surgeries regarding the vaccination programme. The NHS will contact everyone direct when it is their turn to have the vaccine. In the meantime, thank you all for continuing to abide by all the social distancing, wearing of face masks and hand hygiene guidance. We will keep our website and social media channels updated with any developments. Happy New Year!

Sandra East
Granta Communications & Patient Liaison
627743
capccg.contact.gmp@nhs.net
www.grantamedicalpractices.co.uk



The station tower in full splendence



The news in pictures: Above: A vintage Linton News Christmas gift, a 'thank you' to a deliverer from 2000, discovered in a High Street cellar by David Donnan. Below: A crochet rainbow made by Fran Pollard and snapped by Lovely Linton Village. For more pictures follow them on Instagram: @lintonvillage



Fire station helps 'Light up Linton'

AS a focal part of village life, we feel it is important to support village initiatives when we can, so the crew at Linton Fire Station decided to join the project to 'Light Up Linton.' With such a large space to fill we needed a few thousand bulbs to make an impact. We have lights in our huge tree, on the roof of the station building and to the very top of the drill tower; hopefully our lights can be enjoyed from many viewpoints in the village. Although the effort comes from the fire crew, we couldn't have achieved it

without the support of local businesses who helped by providing the lights. We would like to give a huge thanks to the following companies:— KAM Scaffolding, Camgrain, Wylde Sky Brewery, Linton Parish Council and Alan Baker Architectural services. Hopefully we can build on this in the future, and even organise some carols around the tree next year to welcome in the festive season. The crew at Linton Fire Station wish everyone a safe and enjoyable Christmas.

Linton Fire Station

Heroes of 2020

NONE of us knew what lay ahead when we formed a village volunteer team in March 2020, but what a difference having people come together as a community can have! The Team adapted from helping with shopping, prescriptions and errands to wellbeing, food and financial support, working in partnership with other agencies. Realising the pressures on families, we worked with the schools to offer vouchers and food support during the school holidays. Preparing for winter and a different Christmas to any other, we launched our Christmas Kindness campaign. This had an amazing response with donations of all kinds, reaching hundreds of people in Linton. Over 120 Christmas Treat gift bags and food boxes were prepared and distributed through the primary schools, Age UK, St Mary's Church, SCDC and the LCH Team. Christmas meals were delivered via the volunteer team to local households in partnership with SCDC. We gave over 70 cards made by local children to the residents in Symonds house and Nichols Court, who also enjoyed a visit from a small group of carol singers. The call to Light Up Linton was taken to heart by our Fire Brigade and many households, with some beautiful window displays for St Mary's Church Advent Trail. A huge thank you to all involved with Christmas Kindness and LCHT in 2020, our donors, our partners, and most of all our volunteers - without whom none of this would have been possible. We can hope for a different Christmas in 2021 and we will look at how our role can evolve. We are still here to help, and we encourage anyone struggling with bills in January, or wellbeing and mental health with the impact of Covid 19, to get in touch. We have a very small team handling emails and calls and your enquiry is completely confidential. We also hope to bring fun and connection through offering creative community arts projects in which all can take part. More news to follow, but if you can help with the Teamwork in any way - please get in touch - make it your New Year's resolution to keep Linton caring and connected!

Yannick Auckland for LCHT
lintoncommunityhelp@gmail.com
901132

BARTLOW3 counties3 CHARITY WALK

A MESSAGE TO OUR SUPPORTERS

We were so disappointed to have to cancel the 2020 Bartlow walk, and so were our dogs!

Many people have said how much they missed it

We are determined that the 17th Bartlow walk will go ahead

It will be on:

SUNDAY 2 MAY 2021

Please keep the date free, and tell your friends too!

Our local charities really need our support

more details will be available soon

www.bartlow3countieswalk.co.uk

The art of bell ringing

CHURCH bells and cricket, what do they have in common? Quintessentially English, beloved by all, understood by hardly anyone, and once they start they never stop. Church bells are heavy things. Linton has six of them and the heaviest weighs 14cwt (750kg), not far short of a small car. If you then picture these bells swinging full circle in their heavy oak or metal frame, there are a lot of forces involved and most church towers sway quite perceptibly during ringing. For centuries, bells have been cast from bronze, about 80% copper and 20% tin as this resonates well and is durable. Swinging the bell causes the clapper to bounce against the side, but this is difficult to control as the bell simply swings like a pendulum to its own rhythm. They don't seem to mind this on the continent, where, bells jangle randomly and can often be seen swinging in tower arches, powered by electric motors. But for centuries in this country we wanted something better and it was found that the bigger the swing, the easier it was to control. Developing this idea, if a full circle can be achieved by pulling ropes attached to big wooden wheels, the swing of the bell can be varied. A hard pull allows the bell to pause at the top, but with a more gentle pull it never quite reaches the top and swings back of its own accord, i.e. more quickly. But heavy bells have their own momentum, so only small

changes are possible, hence the idea of ringing "changes," where each bell can swap with its neighbour but not produce normal 'tunes'. The skill of the ringer is partly a basic

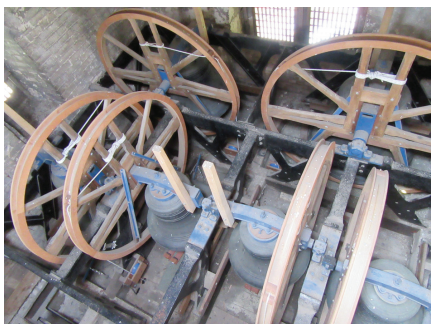
'Ringing the Changes', means pulling harder or softer to just the right degree. Experts make this look easy, but for beginners even small mistakes can make it hard work! A

skilled person can ring a bell weighing two or three tons with apparent ease and split-second accuracy. Then there is the mind-boggling skill of organising infinitely varying mathematical sequences, often with wonderful names – Grandsire, Stedman, Plain Bob, Reverse Canterbury Pleasure. There is no upper limit to those skills, but it's a fascinating hobby at every level and for all ages between nine and 90, and for many it becomes a lifelong passion complete with competitions, ringing outings and social gatherings of all kinds. Like cricket, it is part of the English scene and has been sorely missed recently. I'm sure you noticed when the bells returned – just four of them, 1, 3, 4 and 6 because numbers 2 and 5 were ruled too close for Covid! Linton has a very lively band. We have been practising 'online' for months, but let's hope the bells will ring out over the village again before too long.

Henry Bennet and
Stephen Croxall
Article and pictures



Above and below: the tower's ancient ladder and the bells in their frame



question of mastering the swing of the bell and partly the fascination of organising complex systems, such that the order of the bells changes every time but never repeats. The basic skills take a little patience to master as each bell is different and has to fit exactly with the others. Ringing ordinary 'rounds', ie. 1 2 3 4 5 6 is the starting point. Varying the order,

The Marsh Mail

At Linton Village College we have been working hard to keep school as safe as possible since reopening to all students in September. While it has been necessary to make curriculum adjustments to prioritise the health and wellbeing of the community, it has been really important to us that students benefit from a great quality of education. An important part of students' curriculum experience is opportunities for enrichment. We have had to pause extra-curricular activities to focus on safe core provision and ensure year group separation. We are looking forward to being able to relaunch a range of clubs and extend our curriculum offer when it is safe to do so. Despite the restrictions, LVC staff and students are finding ways to bring learning to life. An example of this is in the Arts. GCSE Dance students are benefiting from virtual links with A Level students at Abbey Gate Sixth Form College in Bury St. Edmunds, and GCSE Music students enjoyed being able to safely perform

in a mini open air Christmas concert at the end of term. The Arts team is also busy preparing students for practical exams and a Year 7 production of Charlie and the Chocolate Factory is underway. School staff have had to be innovative to adapt to the challenges of educating our young people. The prospect of returning to normal later this year is a welcome relief to all. Learning during lockdown has taught us the value of human relationships and connections and the importance of the holistic, enriching aspects of education for students' physical and mental health. However, the phrase 'necessity is the mother of invention' has certainly struck a chord in schools over the last 9 months. There are plenty of innovations and developments that have arisen through necessity that we will harness in the future.

Helena Marsh
LVC

Dancing their way to the top



From Left: Brianna Woolcott, Fia Course, Isabella Hutton and Sofia Haddock

POISE, grace, and confidence radiate from these local young dancers who entered the UK ISTD national set dance finals in October. Linton's Amy Leigh Academy of Dance (ALAD) had tremendous success in the competition in 2020, even though it had to be conducted online. Twelve students from ALAD entered the first stage of the competition, with 21 successful rounds (known as recalls). Ten of the dancers qualified for national finals, joining the existing qualifier from January, U6 Emilia Hutton. Huge congratulations go to all the dancers on their success: U10 Kivi Latham, quarter-finals (rock 'n' roll), U6 Emilia Hutton, semi-finals (disco freestyle), U8 Sofia Haddock, champion! (disco freestyle), U10 Isabella Hutton, second place (rock 'n' roll), U12 Brianna Woolcott (disco freestyle), U12 Fia Course (disco freestyle). A big well done also to Layla Mallyon, Mia Banerjee, Jenny Roberts, Maria Hanagan, Lexi Lawless, Evie Saunders and Sophie Baker. ALAD offers a range of dance styles: acro, disco freestyle, lyrical, street, and rock 'n' roll. The studio is based at Strictly Dance and Fitness, The Grip, Linton.

Yule Edwards
Pictures by Amy Leigh Academy of Dance
amyleighacademyofdance@gmail.com

Don't forget to tell our advertisers where you found them!

ADMIRAL ESTATES
Residential Sales and Lettings

- Local Linton Office
- Cambridge Office
- Specialists: Linton & Local Villages
- 20 Years Experience

Do You Need Help With Your Property?

Call us Now: **01223 891227**
www.admiralestates/linton

ClearTax
& ACCOUNTING LTD

Quality, friendly accounting services and taxation advice.

Sole trader and small company specialist.

Free initial consultation

The Granary,
Yew Farm Yard, Hadstock

t: 01223 894036
e: janine@cleartax.co.uk
www.cleartax.co.uk

Singing Lessons
Sarah Rosewell
BA (Hons) Music

Individual singing lessons available for all ages and abilities

Whether towards exams or purely for pleasure

- * CRB Checked
- * Based in Linton

For more information contact:
Sarah on 01223 894861

Email:
sarahrosewell@hotmail.com

KJL Roofing

All roofing repairs, lead-work, renewal of pitched or flat roofs

New guttering, repairs/unblocking

Free estimates before any work commenced

25 years + Experience

Tel: 01223 892542
Mob: 07958 618440

A TOUCH OF NAILS
GELISH MANICURES & PEDICURES
PERFORMS LIKE A GEL APPLIES LIKE A POLISH

Call Michelle on
07866 017 801
supcuk@talktalk.net
HORSEHEATH

BED & BREAKFAST
Mrs Monica Clarkson
4 Harefield Rise, Linton
Tel: **01223 892988**
Quiet modern bungalow
Families welcome
No Smoking

LOL'S PIZZA

Hand stretched Neapolitan style pizzas using fresh locally sourced ingredients. Available for private hire and party bookings.

Deliveries are available.

Friday and Saturday, Wheatsheaf Way, Linton, CB21 4XB
Monday, The Bell Inn car park in Balsham, CB21 4DZ
07583187560
lolspizzas@gmail.com
Follow @lolspizza on Facebook and Instagram

CapriBlinds
Affordable Quality Blinds

ALL TYPES OF BLINDS SUPPLIED AND FITTED
FREE QUOTATIONS
FREE HOME VISIT
01223-894020

or email **colin@capriblinds.co.uk**
ALL BLINDS ARE MADE IN ENGLAND
- FAST LOCAL SERVICE
Visit capriblinds.co.uk

GLENWOOD
BOLTS & SCREWS LTD
www.glenwoodbolts.co.uk

SUPPLIERS OF QUALITY FASTENERS, FIXINGS & SILVERLINE TOOLS

Unit 2 Lintech Court
The Grip Industrial Estate, Linton
Cambridge, CB21 4XN
Tel: 01223 892095 / 893931
Fax: 01223 894122

NRS CARPETS

HOME SELECTION
FREE MEASURING & ESTIMATING
All types of flooring available

Tel: 01223 893634
Mobile: 07885 173113

Sweet Christmas treats

theWI
INSPIRING WOMEN

MEMBERS got together on zoom this month, dressed in their festive best and with Christmas decorations around them. We had a glass of something to hand. Shelley Ray, our president, gave a sweet making demonstration from her kitchen using a portable electric ring. No cooking involved, just melting ingredients.

Making sweets for Christmas is a family tradition started by her sister who was too broke one year to give presents, so raided her mother's larder, although her first effort, nut brittle, broke somebody's tooth. Shelley demonstrated how to make chocolate fudge, marzipan (with which she showed members how to stuff dates) and marshmallow roll. Previous to the meeting she had made these and delivered a sample to all our members asking them not to eat until the meeting, together with a Christmas card, a recipe sheet, and a sweets and chocolate quiz. Another of our members, Liz Cox, had made coconut ice before the meeting. We ate our sweets while Shelley talked. They were delicious

— better than any bought in a shop and much cheaper. Shelley used a washed rose leaf and ivy leaf to make chocolate leaves for cake decoration. Dip in chocolate, leave to set, and then carefully peel off leaf. Every vein in the leaf shows. We learned the answers to our 15 quiz questions. For example 'High Class Thoroughfare' is Quality Street, 'Istanbul Happiness' is Turkish Delight and 'Drink with no Teeth' is Wine Gums. An unusual Christmas party this year, but a fun evening was had by all. Our next meeting on zoom is on January 5th 2021. It will be a social evening with a *Would I Lie to You?* game. Each member thinks up three things about themselves, one of them untrue, and other members have to guess the lie. We are also planning readings, poetry and monologues, so it should be an entertaining evening. If anybody reading this would like to join the WI, watch out for the posters round the village for contact details. Everybody is welcome.

Sally Proberts
891021

Chestnut Playgroup's generous giving

WE were busy in the run up to Christmas with lots of fun festive activities for the children, including our end of term Christmas party, which we were so pleased to be able to hold for the children. We hope everybody had a lovely (if slightly different) Christmas and New Year. We would like to say a huge thank you to everyone who gave a gift, or made a donation to our collection for the Symonds House residents: it was much appreciated. We were able to fill boxes for the residents on every unit, along with the handmade decorations and cards made by the children. We also wish to thank Linton Co-op for choosing us as one of their charities for the Local Community Fund, and everyone who has chosen us so far. The fund will be running until October 2021 so there is still an opportunity to choose a local cause. We are so grateful to be able to have the chance to raise vital funds, especially during this unusual time. Lastly, we are delighted to welcome two new members of staff, Sarah and Jo, to the team and we are now at full capacity. We are taking enquiries for children starting in September 2021 and beyond, so please do get in touch if you would like your child to attend Chestnuts from the next Autumn term, on adm.chestnutpg@gmail.com or via our website: www.chestnutplaygroup.btck.co.uk.

The Chestnut Playgroup Team

Linton Gardening Club



A treat for the senses at the Annual Show in 2019

AS 2021 starts, as well as waiting for the first green shoots of our garden bulbs to appear, we are also looking forward to seeing the first signs of a return to usual village life, as the spread of Covid-19 is brought under control. Based on the current situation, the committee has decided not to hold Gardening Club meetings in January, February and March but hopefully, as the year progresses and circumstances improve, we will be able to resume the club's usual calendar of events. We are looking forward to the time when we can hold monthly meetings again, so that we can get together with our regular members and also welcome new members, who have discovered the joy of gardening over the past few months and would like to meet up with like-minded, green-fingered people and find out more about plants and growing them. The club is also very much hoping to hold both its Plant Sale in May and Annual Show in July this year. The format of these two events will very much depend on the Covid-19 situation at the time. There may have to be changes compared to previous years but we do aim to organise these events to help, in a small way, bring back some normality to the village life that we have all missed so much in 2020. Happy New Year.

Jim and Helen
Linton Garden Club
lgcsecretary@yahoo.co.uk, tel. 893577

Readers write...

Post and email addresses and deadline for letters are on this page. All letters for publication must have a full name, address or phone number to enable us to check authenticity. Letters may be edited. Opinions are not necessarily those of the Linton News.

Anonymous letters will NOT be published but names and addresses may be withheld if requested.

OUR THANKS

I recently visited the Chestnut Playgroup, who have kindly raised funds and donated gifts to our residents at Symonds House. We exchanged gifts in late December. In normal times they would have visited the home and sung with the residents, which they looked forward to. This year has been very hard on everyone. I would like to thank everyone involved and wish them a heartfelt merry Christmas and a happy New Year.

Shani Bradley
Activities Coordinator
Symonds House

THE LINTON NEWS Next Publication 1st February 2021

DEADLINES FOR NEWS ITEMS:
Wednesday 13th January

ITEMS FOR ADVERTISING MANAGER

Requests for adverts can be sent to:
Judith Rouse: adverts.linton.news@gmail.com

ITEMS FOR THE EDITOR

Should be sent to Jack Glossop
editor.linton.news@gmail.com

FOR DISTRIBUTION QUERIES CONTACT:

Delivery managers: Jenny and Chris Murison, 660408, or
07905 384741 delivery.linton.news@gmail.com

Call 893619 for an audio version of the Linton News.

Linton bin collection dates

Black bins: Wednesday 6th and Monday 18th January
Blue bins: Tuesday 12th and Monday 25th January
Green Bins: Tuesday 12th January

Air Cadets set to fly again soon

WE look forward to kick starting the new year with Face-to-Face activities at 2523 Linton Squadron. With many events starting to populate the calendar, we look forward to the return of L98 shooting with weapons handling tests being completed in December and the first shoots booked for mid-January. 2021 will see many flying opportunities with our usual allocation of air experience flights and scholarship placement opportunities. 2 Flight Training School have worked hard to ensure we can return safely to airborne activities and training. The aerospace team have been busy preparing our simulator training stations, and the course dates for ground school aerospace have started to be released, along with dates for the premier camp: Aerospace Camp. Our camp season kicks off in March, and we are hopeful that Easter Camp 2021 will be able to go ahead as planned, paving the way for all of our summer camps too. With staff using the lockdown to complete additional training, when the squadron does return in the new year we will be better placed than ever to deliver first aid, leadership and BTEC training from across our progressive training syllabus. A list of subjects can be found on our website www.2523linton.co.uk. Once we are settled back into a routine, we will look to expand the squadron by recruiting new cadets, (minimum age 12 and in year eight) to start their cadet career. 2523 and the entire RAF Air Cadet organisation is set to bounce back this year with an industrious and ambitious training programme at local, regional and national level.

Bradley Wright
Pilot Officer RAFAC
training.2523@rafac.mod.gov.uk
07943 873272

Camsight VIPs

WE are the Cambridgeshire charity for people of all ages with low vision and blindness. In 2021 we will be bringing news of Camsight's plans to provide advice and resources locally from mobile units which will regularly visit villages in Cambridgeshire, making their services more easily available. More details will be forthcoming in the new year. Although we are keeping in regular contact with our members, if you know of anyone who you think may benefit from our services, please contact us on the number below – especially if in the present circumstances they may be alone at Christmas. Meanwhile, the volunteers and friends at Camsight send all members our best wishes for a healthy and happy New Year.

Jean Mannion
893595

THE DOG & DUCK
TEL: 01223 890349
WHATSAPP: 07932993433
HAPPY NEW YEAR!

COME & ENJOY YOURSELVES IN OUR OUTDOOR HEATED MARQUEE OR OUTDOOR HUTS
TAKEAWAY FOOD AVAILABLE TO ORDER VIA OUR ONLINE STORE
THE SHED SHOP IS STILL OPEN, OFFERING DAY TO DAY ESSENTIALS, BUTCHERS MEAT & FRESH VEGETABLES
POP IN OR ORDER ON OUR ONLINE STORE FOR COLLECTION OR DELIVERY.
WWW.DOGDUCKSHOP.COM

CHECK OUT OUR WEBSITE FOR NEWS, UPDATES & MENUS.
WWW.DOGANDDUCK-LINTON.CO.UK



The Linton
Laundry

Shirt pressing
Ironing
Laundry
Eco friendly detergents
Wet Cleaning
Door to door service

Call us on 07894 197805
info@lintonlaundry.co.uk
lintonlaundry.co.uk



zigzagpilates

- Qualified Body Control Pilates Teacher.
- Classes and 1-1 sessions
- Specialising in older and less able clients.

Contact Rachel 07905105081
Rachel@zigzagpilates.co.uk
www.zigzagpilates.co.uk

Linton Cabs

Airports / Train Stations / Local Travel

07958657300

lintoncabs@btinternet.com

PLUMBLINE

PLUMBING AND HEATING ENGINEER
PROFESSIONAL DOMESTIC PLUMBING SERVICE

Including Property Maintenance
Painting: Tiling: Plastering: Carpentry

Call John on
01223 893903

Supcick@talktalk.net

Fully Qualified and Insured

Friendly and Reliable Service No Job Too Small



BODY
DESIGN
PILATES



Su Matthews
REPS LEVEL 4 PILATES TEACHER
& BACK4GOOD PRACTITIONER

07986 692 334

Pilates Classes
Linton & Horseheath

su@bodydesignpilates.co.uk
bodydesignpilates.co.uk



PILATES
Back4Good

Back4Good

kalma
Reiki & Crystal Healing

Reiki & Crystal Healing
including children and animals
(Linton - You Beauty Cambridge)

Community Reiki Healing Clinic
(Linton Village Hall)

Relaxation Classes
(Linton, Sawston, Stapleford, Arthur Rank)

Faye@KarmaReiki.co.uk

07815 608897
@Karma_Reiki
@KarmaReiki

SHINE

WINDOW
CLEANING

TEL. 01223 893529
MOB. 07703 518882

FREE QUOTATIONS

FULL PUBLIC LIABILITY
INSURANCE

SHINWINDOWCLEANINGSERVICES@GMAIL.COM

Happy New Year to you all from the staff and children at Linton CE Infant School

I AM writing this on a day of snow in early December which caught many of us unawares! However, the children are having great fun playing outside. Our normal Christmas performance couldn't take place, but always a team who are up for a challenge, the staff felt the children couldn't miss out on the magic surrounding the Christmas story, so we filmed each section and put it all together! The children thoroughly enjoyed filming 'on location' in the churchyard, the main office, on the playground and in the caretaker's cupboard! We usually use these performances to raise funds for local charities by having donation buckets at each performance. Instead we asked families to make a donation via the school drop box which we passed onto the Addenbrooke's *Help your Hospital* appeal, which is to aid the wellbeing of staff and help

to provide vital equipment needed to support the intensive care unit. Another film has been produced to highlight our school for parents considering us as the place for their child in September 2021. Once again, restrictions meant parents couldn't come for a look round so a short, promotional video has been added to our website which I hope gives you a small insight into our school.

At the end of November, we were thrilled to receive over £2500 from the Co-op as part of their local community fund scheme. This sum exceeded all of our hopes and the staff and children here would like to say a huge thank you to you and the Co-op for supporting us.

Kelly Harries
Headteacher

Chiropractors open all year and ready to help



Ed and Jo at their clinic, providing care for the community

ED and Jo Groenhart, chiropractor and massage therapist at their studio in the village, have had a busy year: As a registered health professional, Ed was allowed to continue to see patients all year (remotely in the early days of lockdown). New hygiene, PPE and triage protocols were adopted early on, and since July both Ed and Jo have continued to provide care for the community. Hopes are high that 2021 will continue to show improvements in the overall position for our world, but massive external stresses have led

to more people coming in for care for complaints such as headaches, shoulder tension and generalised aches and pains. Evening and weekend appointments are available so you don't have to take time out of work to attend. The overall message is: we can help! Happy New Year from Ed, Jo and the family.

Ed and Jo Groenhart
07870 568548
cambridgefamilychiro.co.uk

Linton Area Learning Alliance courses

MEMBERS of Linton Area Learning Alliance (LALA) mastered using Zoom and enjoyed the aviation history course in the autumn, entitled *Glory Days and Golden Girls*. The tutor had a thorough knowledge of the subject and showed us a multitude of photographs and relevant material.

Covid restrictions mean that we are still unable to meet in the Village Hall and the next course will also be by Zoom on a different topic. Kate Jewell will present *A Jolly Good Murder: The Rise of Crime as Entertainment, 1810 – 1940*. The meetings continue to be on Tuesday mornings starting 19th January for eight weeks, from 11.00 to 12.30.

The Great Bradley WEA spring course will also use Zoom and is *An Historic Tour of East Anglia* – an introduction to more than 300 years of change in the landscape and communities primarily in the historic counties of Suffolk and Norfolk, using the original observations and recommendations of travellers and writers in past centuries. These lectures will be for 10 weeks on Wednesdays at 9.30, starting 13th January.

Please contact me for information about either of these courses.

Sue Mudge
01223 892737

Goodbye Home

ON the 5th November 'Home' the gift shop in Linton's High Street, shut its door for the last time. Lucy, the shop owner, said she was moving for family reasons back to Oxfordshire, and had planned to close just after Christmas. When the lockdown was announced it made sense to use the time to move the shop to its new location in Shipston on Stour. She has said that she is very sad to leave such a wonderful friendly village, and wanted to thank everyone for their support in making her first shop the success it was. 'Home' on Facebook/Instagram will still be the same, but a new online website homegift.uk is currently underway, and should be available shortly.

Linton News Team



'Home' in the High Street, relocating to Oxfordshire



Cambridgeshire Family
Chiropractic Centre

Bespoke massage and chiropractic care
for aches and pains
Specific techniques for pregnancy and children
15 years' experience
Call 07870568548

www.cambridgefamilychiro.co.uk



Linton's new Estate Agency.

Get in touch for a free
valuation

sam@abodetc.co.uk
01763 259 888

0.75%
Selling
fee!



The
Crown Inn

CURRENT SOCIAL DISTANCING RULES APPLY

Table Service: Tapas Menu/Main Menu
'Boris substantial soup' £3

~ HAPPY NEW YEAR ~

We hope to see all our wonderful customers, new
& old, in 2021. Thanks for your continued support.
01223 891759 crownatinton.co.uk

TIM PHILLIPS & Co. Accountants

Established 1991

Independent, specialist service for:
**Small Business • Self Assessment
Personal Taxation**

Free initial consultation – no obligation
EASY, FREE PARKING

Copley Hill Business Park, Cambridge Rd., Babraham
Off A1307 between Wandlebury and Babraham

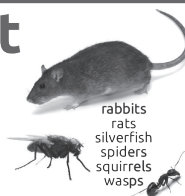
Tel: 01223 830044. www.tpaccounts.co.uk

Pest Right Pest Control

ants
bedbugs
bees
carpet beetle
cluster flies
cockroach
earwigs



fleas
flies
foxes
mice
moles
moths
pigeons



rabbits
rats
silverfish
spiders
squirrels
wasps

Based in Linton, call Mark or Carolyn on
01223 897982 or 0845 4682412 or 0777 620 4483 for
a discreet professional insured service

RESIDENTIAL • COMMERCIAL • AGRICULTURAL • INDUSTRIAL

Linton Complementary Health Centre

2B Bartlow Road, Linton, CB21 4LY

- Acupuncture
- Shiatsu
- Massage
- Food Intolerance Testing

Telephone: 01223 891145
Email: enquiries@lintonhealth.co.uk



COUNTRY MATTERS

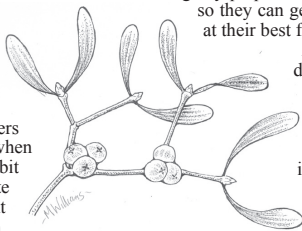
Text by Oriel O'Loughlin and illustrated by Maureen Williams



All you need to know about Mistletoe

IT has not been much of a year for snogging under the mistletoe. But before you ditch your sprig into the green bin, let's find out a bit about both its qualities and the myths that surround it. There is a lot of mistletoe about this year. Look up into lime and poplar trees, and sometimes willow, hawthorn and apple trees, and there might well be a spherical clump of mistletoe, Latin name *Viscum Album*, up to a metre in diameter. The small branches fork repeatedly, and the berries grow in the fork. You can find it in orchards, hedgerows, parks and gardens, but never in dense woodland, and rarely north of Yorkshire. It flowers from February to April, but it's in winter when its leathery green leaves offer a welcome bit of colour when all else is dormant. Its white berries may not be as pretty as red holly, but are much prized by blackcap, mistle thrush, redwing and fieldfares.

Deer find it in hedges and eat it for protein. Mistletoe is a bit like a cuckoo, in that it sponges off others. Though it can produce some of its own food via photosynthesis, it is a parasitic plant living off nutrients and water from the host tree, with roots penetrating the bark. It can weaken the host, but won't kill it. Like holly, it is dioecious, meaning male and female flowers are produced on separate plants. I've looked at pictures but of course I can't tell the difference even when it is pointed out.



Mistletoe berries are white and waxy, and the seeds are coated in a sticky substance which sticks to the bills of birds feeding off the fruit. These birds wipe their beaks clean on a branch, or eat the sticky stuff and excrete it on trees in their droppings. The gluey pulp hardens round the seeds and holds them in place so they can germinate and grow throughout the year, to be at their best for Christmas.

And this is where the myths come in – a goddess in Norse legend declared mistletoe to be a symbol of love, and a boy could kiss a girl for each berry in his bunch. In Scandinavian legend, the god Balder the Beautiful was killed by mistletoe and his mother banished it to the top of the tree. In Greek mythology mistletoe granted heroes passage to the underworld. Pliny the Elder mentioned it as a balm against ulcers and epilepsy. Druids taught that mistletoe protects against evil, and throughout the Middle Ages it was associated with fertility and vitality. Early Christians banned the use of mistletoe because of its association with Druids. In Brittany the plant is known as *Herbe de la Croix* because it is thought that Christ's cross was made of it. After the crucifixion, the plant shrivelled and dwarfed to a parasitic vine. There are seemingly endless legends surrounding it – what an extraordinary journey from sacred herb to Christmas decoration.

Pub names around Linton

THE local pub has long been a focal point of the community. Samuel Pepys in his diary described the pub as "the heart of England." Beer was once much safer to drink than contaminated water. Many of our local pubs are centuries old, built when most of the population were illiterate. They had distinctive names and simple signs to identify them. As early as 1393 Richard II required landlords to erect signs so that ale houses were clearly visible to his inspectors, who judged the quality of the ale. Nowadays, not all have signs but there are many interesting names.

The Saracen's Head in Great Dunmow, opposite the market place, is a 16th-century coaching inn. A Saracen was an Arab Muslim who in the Middle Ages fought against Christians for control of the Holy Land. *The Blind Fiddler* in Anstey takes its name from a tale of George the blind fiddler who for a bet entered a tunnel said to run from a pit to the castle mound a mile away. He was accompanied by his dog. A scream was heard, the dog reappeared singed from head to tail, but George was never seen again.

In *Bartlow, The Three Hills* dates from around 1800 AD and is named after the parish's giant Roman burial mounds which also feature on the village sign.

The Sword in Hand in Westmill takes its name from the coat of arms of the Greg family who once lived in the parish and were generous benefactors. It has an unusual and distinctive new sign.

Let's hope that we can soon all return to fully enjoying the hospitality of our local hostellers. Each of those mentioned here can be found on one of the walks described on the Society's website: www.hundredparishes.org.uk

Ken McDonald, Secretary



The Three Hills, Bartlow

News from St Mary's

LIKE everyone in the world, the people of St Mary's are hoping 2021 will be something of a new dawn. Although in fact, in our Christian faith, every day has the potential to be a new day and a fresh start with God, who can transfigure and transform the sadness and struggles, the griefs and the failures of the past into something wonderful, both for individuals and communities. However, as far as church planning is concerned, we're very much looking forward to a new project in 2021 which will build on our previous experience in running summer holiday clubs, with lunches in 2018 and 2019, and also working with Linton Community Help Team this year to make

sure that no children in the village should be hungry in the October half-term. We hope to start a free lunch club once a week in every school holiday. We would like to launch this in the February half-term or, if not, in the first holiday period in which Coronavirus restrictions don't make it impossible. So, watch this space! Our church motto is 'Church in the community and community in the Church,' and in the present times, this is how we feel we're being called to live that out.

Maggie Guite
Rector of St Mary's, Linton
rector@stmaryslinton.org.uk

.... and a virtual quiz

FOLLOWING the success of our virtual quiz last year, St Mary's events committee are hosting a family friendly quiz on Sunday 10th January 2021 at 3pm via Zoom. To receive Zoom details please email events@stmaryslinton.org.uk. The quiz will have a variety of rounds including nursery rhymes, films, literature and pictures. There is no entry fee but donations to the church are always welcome.

Charlotte Ellis
Events Committee
St Mary's, Linton

POT POURRI 187

The Christmas pudding dilemma

THERE are 5 Christmas puddings placed on Santa's scales two at a time. Five elves will each get a pudding provided they select the correct weight. The weights are: 160, 180, 190, 200, 210, 220, 230, 240, 260 & 270gms. (Weights are all whole numbers.)

Pot Pourri 186 - What should the weights be?

The weights are 1, 3, 9 & 27 lbs. (Using both sides of the pan.)

Spotlight on: Rosemary Wellings

ROSEMARY Wellings is a familiar face in Linton, having lived here for 35 years. Originally trained as a Town Planner, in 1980 she had started up a company in Cambridge called *Chapter and Verse* where she sold postcards, but unusual postcards for the time in that, in order to reflect the beauty and variety of landscapes and architecture, the medium used was photography. Moving to the Maltings in Linton enabled her to live and work in the same place. *Chapter and Verse* became tremendously successful, selling in 15 different countries and as an avid traveller, Rosemary was able to indulge her passion by attending trade fairs abroad, tacking on time afterwards to explore many different countries.

In 2014 one of her tenants at the Maltings had the idea of starting an organic farm shop in what had been her office, so Rosemary moved upstairs and last year decided to turn the whole of the upper floor back to being a gallery, selling prints as well as her postcards and occasion cards.

Rosemary worked at the Fry Gallery in Saffron Walden for many years as an invigilator and it was here that she became captivated by the work of the artist Eric Ravilious. She met with his son James, some of whose photos had already been used as cards for *Chapter and Verse*, and James agreed to provide a new collection of cards for the gallery.

Rosemary has now expanded the gallery and it re-opened in October with an exhibition by Jim Anderson, a local multi-media artist, and work by Emma Kiernan of Linton Pottery, coincidentally the same name as was the Maltings when she bought it back in 1985. A major part of the gallery is dedicated to the work of Ravilious about whom she is passionate, but she is especially keen to showcase the work of local artists and there will also be basket works by Debbie Hall of Salix Arts, ceramics by Sarah Jenkins and fine jewellery by gemmologist Gillian Mallet.

Sarah Hurcum
Article and photo



Rosemary in the gallery

MALLYON & DONALDSON
Linton

Specialising in both Modern and
Traditional building methods.

Tel: 01223 891267
Mob: 07941 220868

All contracts finished to a high standard.
Reliable service. Local references available.

CardiacFit

Safe, effective exercise
for good heart health

Cardiac rehab. (Phase 4)
Exercise referral
1-to-1 / online

Anton Flynn
07837 065946
afibfitness.co.uk

YOU BEAUTY
CAMBRIDGEYOUR LOCAL
BEAUTY SALON

Check us out at
5 Balsham Road, Linton
Cambridge CB21 4LD
youbeautycambridge.co.uk
01223 668400

Children, Birds, and Books

An exhibition of prints, paintings, and mosaic by

Jim Anderson

Recent winner in BBC's *Home Is Where The Art Is*

Gallery Above

94 High Street, Linton, Cambs. CB21 4JT 01223 894 899

Opening Hours: 10.30am until 6pm

Wednesdays to Fridays

Saturdays 10.30am until 2.00pm

LINTON VILLAGE MOTORS

(situated in Great Abington opposite Granta Park)

www.lintonvillagemotors.co.uk

Tel: 01223 830550

- MOT testing
- All makes of vehicles serviced and repaired
- Tyres at competitive prices
- courtesy car provided
- Polite and friendly staff



Mon-Fri: 8.30am-5.30pm Sat: 8.30am-12.30pm

McKenzie & Haywards
Garage LTD

MOT by appointment while you wait
Servicing, Collection & Delivery Service

Unit 3 & 4, Lintech Court
The Grip Industrial Estate
Linton, Cambs
CB21 4XN

Tel : 01223 894140
Fax : 01223 890035
mhgarage@btconnect.com

PJB
Maintenance

No job too small
Ground work, Patios, Floor
& Wall Tiling, Fencing, Roof
repairs, Demolition
CPSC Licence
Free Estimates

Call Peter Belsom on
Mob: 07799 183308
Tel: 01223 668475

MOPS HAIR SALON

HAIR BY JO DENNY
WOMEN / MEN / CHILDREN
CUTTING & COLOURING

41 LINTON HIGH STREET
(BEHIND BOSWELL'S BAKERY)
t: 01223 893 285

Life skills at Granta school

NEW year is upon us and here at Granta we are excited to start our new curriculum, focused on our students developing skills for life. Our aim for all our young people is that they are as independent and prepared for adulthood as possible. For some, this might mean making choices independently, whilst for others this involves developing work skills and independent living skills. Being a part of our local community is core to this vision and we look forward to



Students developing skills for life

welcoming local residents and companies into our school. We cannot wait for the opportunity to get back out into the village, to practise using the library, visiting the church, buying items from shops, interacting with others at the local care homes and serving our local community through joint activities and environmental ventures! In preparation for this, we are busily taking part in classroom activities to strengthen our social communication, travel and money skills. An exciting, post-Covid time awaits and we are ready for the new experiences it will bring!

Ruchi Datta
Headteacher

New year of reading at Linton library

A VERY happy New Year to all our library customers! Latest government guidelines permitting, we expect to be offering a managed browsing service when we reopen for 2021, so please come along and choose some great books to start a new year of reading! Alternatively, if you prefer, our Select & Collect service will still be available or you can reserve titles online. We'll prepare these for you to pick up. We have now reinstated some charges, which go towards our operating costs. There is a charge for borrowing videos and audio books, and reservations are currently 50p each. But as we still need to quarantine returned items, fines for late returns remain suspended (subject to review). You can keep up to date with the latest library information via our website (see below), or subscribe to our monthly e-newsletter. Or come in and ask!

We really look forward to seeing you again in the library.

Opening hours: Tuesday 10am-2pm; Thursday 2-6pm

Customer Services (regular office hours): 0345 0455225

Bus Pass application & renewal: 0345 0451367

Blue Badge application & renewal: 0345 0455204

Libraries website: www.cambridgeshire.gov.uk/library

Anna & Lindsay, Community Library Assistants, Linton
Library
anna.mcmahon@cambridgeshire.gov.uk

District and County Councillors' report December 2020

A1307 Update

THE upgrades, managed by the Greater Cambridge Partnership (GCP), to the A1307 continue with the next steps being installation of average speed cameras between Haverhill and Linton, a new roundabout at the end of Bartlow Road in Linton and remodelling of the Dean Road junction. The signalised pedestrian crossing at Hildersham is attempting to be pushed forward by the GCP but they are having difficulty securing the land required. The GCP are trying all avenues, including compulsory purchase, which will increase the project time as this isn't a quick process.

(Another) GCP Consultation

The GCP are still currently consulting on their preferred new off-road route between the new travel hub/park & ride site and Cambridge. This is a huge piece of infrastructure, so please do engage. The consultation documents can be seen online at www.consultcambis.uk/engagementhq.com/cset-eia

Local Plan

The joint Local Plan, being drawn up between South Cambs and the City councils, is still moving forward. The latest update is that the findings from the consultation last year have now been collated and published. The councils will take this information on board whilst formulating their preferred options, which will likely be published next autumn. If you would like to see any of the documents, including the proposed locations of developments, you can see all the information here www.greatercambridgeplanning.org/emerging-plans-and-guidance/greater-cambridge-local-plan/document-library/

Brexit

You may have seen the national advertising campaign urging businesses to prepare for Brexit: please do encourage local businesses in your areas to take heed of this. This is still happening and very soon. If commercial advice is needed, the Cambridgeshire Chamber of Commerce is always very useful www.cambridgeshirechamber.co.uk/brexit/

Resurfacing

As previously reported, the County Council are resurfacing some roads in our area. This was due to occur in the first two weeks of December, but please keep an eye out for the signs on the street.

Social Housing Allocation Policy

As previously reported, SCDC are still consulting on minor changes to the social housing allocation policy. The consultation is running until December 18th. The info can be found here www.scams.gov.uk/comment-on-proposed-changes-to-social-housing-allocation-policy/

Sunnica Solar Farm Consultation

Not strictly in our area, or District for that matter, but there are proposals for an enormous solar farm based in East Cambridgeshire, across 4 sites. The company is currently consulting on these proposals and anybody can comment here - <https://sunnica.co.uk/proposals/>

Horseheath Road

Due to scheduled footpath works relating to the new housing development, the top part of Horseheath Road will be closed, temporarily, from January 11th - February 5th whilst the work goes ahead. The official diversion is via Bartlow Road.

Uttlesford Local Plan

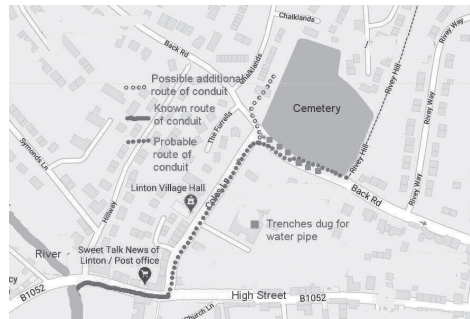
Last year Uttlesford District Council submitted plans to a government inspector to allocate 10,000 houses near Gt Chesterford as part of their Local Plan. The inspector told them to go away and start again, which they are now doing and are asking for public engagement in this process. Uttlesford still needs to allocate these houses somewhere and there is still a risk that they will try to do so on or near to the South Cambridgeshire border, which will directly affect our infrastructure. John and Henry will keep you as up to date as possible from the local authority angle, but do keep your ears to the ground!

Councillors Henry and John Batchelor

Chalk in the river?

FOLLOWING a short heavy downpour early in October, a large quantity of chalky material was seen emerging from the pipe on the riverbank between the bridge and the weir in Dr Bertram's grounds, the origins of which seemed to come from the excavations in Back Road for the installation of a large water

to make a hole through which the new section of pipe could be drawn. It is likely that the boring device breached the conduit in the sections between the holes and therefore was not visible in the holes dug. Once the new water pipe was put in place the breached conduit was sealed and no further emissions of chalky water



pipe. When we first moved to the village over 40 years ago, a stream of water was continually emerging from the pipe. Some 20 years ago the flow of water had ceased. The only water emerging was from the rainwater gully by the bus stop. About 10 years ago a two foot deep pothole appeared in the roadway opposite Sweet Talk News. This revealed a brick built conduit which had been damaged by the installation of a gas supply to Linton House. The conduit appeared to be a well built structure. From what I recall it was about 18 inches in diameter. The recent excavations in Back Road and the subsequent flood of chalky water out of the pipe seemed to indicate that the conduit had been constructed (probably over a 100 years ago) for the drainage of water from the Rivey. Examination of the holes dug in Back Road revealed that the boring to take the new water main was mainly through chalk. However, there was no visible sign of a conduit in the holes excavated. The system used by the water company is to dig holes many yards apart, and to use a boring system

have been seen. The only water flowing from the pipe is after rain and is from the gully by the bus stop. However, in Chalklands there is a property with a manhole from which a flood of water occurs after heavy rain. This may indicate that there is another branch of the conduit which is also currently blocked. The water company intend to extend the new pipe past the bottom of Chalklands. This may be by open trench rather than by a boring system in which case if there is an extension to the conduit in that section it may be revealed. To date, the further extension of the pipe laying has not revealed any additional component of the conduit. And so, we are left with the knowledge that in Back Road by the cemetery, there is a conduit of ancient origin for draining excess water from the Rivey area, but unfortunately due to the system used by the water company for pipe laying, we do not know where it is.

Brian Cox
Linton Parish Council

A & R PLASTERING
All aspects of plastering undertaken:
Plasterboarding
Rendering
No job too small
30+ years experience
Free estimates
Tel: 01223890228
Mobile: 0774 8627920

Springfield House B&B
14/16 Horn Lane, Linton
River Views from:
bedrooms & guest lounge
01223 891383
www.springfieldhouselinton.com
DESIGNER DRAPES
Local Curtain & Blind Specialist
01223 890556

Allstar Cleaning Ltd
www.allstarcleaning.me.uk
Your Local, Professional, Carpet Cleaner Dean
11 years experience
Package to suit every level: Basic, Pet Treatment or Carpet Protector
£15 off for repeat customers
Free stain spotter for all customers
Contact Dean on 01223 654652
or info@allstarcleaning.me.uk to make an appointment.
Allstar Cleaning, 10 Coles Lane, Linton, CB21 4JS
14 Hillway, Linton, CB21 4JE.

MOBILE CHIROPRACTIC SERVICE
GCC-Registered Chiropractor
ALEXANDER M SMITH
01223 967565
SOUTH CAMBS AREA
(Based in Linton)
Effective care in the comfort of your home
- Low back pain & sciatica
- Neck pain & headaches
- Muscle spasm/tension
- Shoulder & Knee pain
- Postural problems
www.alexandersmithchiropractor.co.uk

GARDENER
N.C.H. QUALIFIED
All garden maintenance including:
Weeding - Mowing
Hedge cutting - Turfing
Garden clearance
Shed/fence treatment
Hard/soft landscaping
For a friendly professional service please call:
Darryl Tilling
01223 892133
07932 021277

Ask Edward
Garden & Home
Routine Garden & Home Maintenance
Gardens cleared, restored & enhanced.
Year round garden programmes available.
'No job too small'
For a free estimate & friendly service,
Linton based, call
07768701010 or
Email:
edwardsdsgarden1984@gmail.com

Westlakes
Painting & Decorating
Les Westlake (exterior only)
Mobile: 07929 501101
Tel: 01223 892866
Clive Westlake
07900 492127
Adam Westlake
07917 890752

Barn Owl Accommodation
Private self-contained annexes all in Linton
www.barnowlaccommodation.co.uk
Call Suzanne on 07767 941188

STEVE WEBB
Painter & Decorator
Now upcycled furniture painted to your requirements
Excellent present ideas
Call for viewing details
Tel: 01223 893864

PSH Electrical Services
Rewires, New builds, Extra lights, Extra sockets, Repair works, Garden lighting, Showers
Registered NIC EIC domestic installer
email
pshelectrical27@gmail.com
telephone 07867980738

CHRISTOPHER MARKHAM
HOME & GARDEN SERVICES
Interior/Exterior Decorating
Fencing, Guttering
Turfing, Garden Clearance
Lawn & Hedge Cutting
Decking & Patio Cleaning
Patios & Driveways
Call on
(01223) 892889
or 07973 294946
No job too small...

Time for Planting... Trees - some for free!

TREES - some for free! Following the wet winter, then a long, hot summer, some of LPC's recently planted trees did not survive. So, we are replanting Rowans in the cemetery as well as adding more to the Old Pond area. The splendid red leaved tree on Parsonage Way had to be felled as it had a fungal infection. The Pissards Plum (just love that name!) will be replaced with another of similar colour. A variegated tree will replace another nearby dead tree.

There has been a national boom in planting, leaving native trees hard to find. However, we have been given several Oak saplings by Plumbs Dairy - they were in a paddock and needed to be removed as acorns can be poisonous to some animals. Many thanks for this - we will find them good homes.

We did source native fruit trees from the East Of England Apples and Orchards Project. This charity aims to preserve native species for their variety, heritage and genetic value, and is a great source of information www.applesandorchards.org.uk. These were free through the SCDC "Three Free Trees" scheme. We chose a Cambridge Gage, Willingham Gage and Wallis Wonder for our Community Orchard. These all have local links including one being grown by the family of Pam Kenyon, our esteemed retired Parish and District Councillor.

There will be more hedge planting, again with food in mind - for wildlife and for us. Perhaps a few juniper as well as sloes and blackthorn? And so back to the Pissards Plum - maybe another type of plum, cherry or Acer would be a suitable replacement?

Cllr Enid Bald.

Parish Progress

DURING the past few months the office has been busy!

In addition to the normal day to day duties of noisy drains and fallen branches we have ticked quite a few boxes! In early October the Parish Council, along with the Cambridge Rutherford Rotary Club, planted a few thousand bulbs which will cheer up the green spaces in the village centre before we know it. A spring treat which we are looking forward to seeing after the cold, dark winter months.

We have installed a new dual purpose bin at the entrance to Leadwell Meadows which is emptied every other Monday along with the household black bin collection. There will also be two new bins installed on Camping Close in the New Year. The addition of a new picnic bench on the Recreation Ground with wheelchair access to ensure everyone can enjoy the facilities has been welcomed. We hope to be able to put the Bowling Green to better use very soon, watch this space for updates.

The Cemetery has two new benches installed, unfortunately following mindless vandalism of a memorial bench, one was used as a replacement. It is hoped that these will give people a place for quiet contemplation. The cemetery will be given some much needed tender, loving, care over the winter months and we hope to be looking very tidy by Easter.

The Parsonage Road Bus shelter has been repaired which was long overdue. There have been solar lights fitted which are activated by a motion sensor, hopefully a simple fix to an otherwise very expensive lighting repair.

South Cambridgeshire District Council are in the process of changing the street lights in the village over to LED which is cost saving exercise and also replacing the older style lamp posts. There are four remaining as ornate and these will be upgraded soon. After a difficult year we are looking forward to 2021, full of hope and anticipation, and we would like to wish all of the Linton Parishioners a peaceful New Year.

Clerk.

Parking, Police and Policies.

LINTON has the narrowest High Street in the county, and permitted parking means that two vehicles can't pass at the same time. Illegal parking takes up the space that allows cars to move in so that buses or lorries can pass, and blocks pavements so that wheelchair users and people with prams can't get past without moving into the road - if indeed they can do so. Increased business and delivery activity has added to the pressure, as have the twenty or so people who like to park here for free and take a bus into Cambridge. The bitter, expensive and unnecessary dispute over the Market Square makes matters worse, while some drivers' habit of moving onto the pavement adds danger. And we have no enforcement.

Most of the time, courtesy and common sense are making the best of things, but we need to be able to prevent parking on double yellow lines and on pavements. After some years of lobbying the District Council and Police Commissioner, we have a glimmer of hope. PCSOs are authorised to ticket illegal parking and will begin to do so. People parking illegally need to know that they are now taking a risk.

More significantly, the Acting Police Commissioner has expressed support for "decriminalising" illegal parking - a step that would actually improve enforcement by allowing authorities other than the police to issue tickets and, possibly, to clamp or tow vehicles causing an obstruction. This affects a large number of villages around Cambridge, and would give us the means to develop the comprehensive parking policy that we clearly need. We will continue to press the District Council for early action, and will co-operate with other villages to keep costs down.

What might a parking policy look like? Some kind of flexible residents' or business permit might work, with time limits for other users, but it could be expensive, with a lot of devil in the detail. The Parish Council has also made three applications to add double yellow lines along the whole of the High Street from the bridge to the A1307 on the Haverhill side. A decision is expected shortly. We also need parking bays and improved signage.

Parking problems are not limited to the High Street, and we can expect cars prevented from using it to find the nearest available space, whatever the consequences for residents and businesses. For example, parking for sports events has prevented some residents of Meadow Lane from getting their vehicles out of their drive in order to go to work. The Parish Council is fully aware of residents' frustration, and is doing what it can to improve matters. We are working to make it more.

Cllr John Bald.

Dates for your Diary

HAPPY NEW YEAR! The first meeting of the Parish Council in 2021 will be held on Thursday 21st January. If you would like to raise any points with the Council please contact the office by Tuesday 12th January 2021. This may seem an early deadline but the agenda must be available to everyone a week prior to the meeting. All members of the public are welcome to attend and there is a public participation section in each meeting. Meetings are currently being held via remote links on Zoom. An invitation link is posted on Facebook along with details of the meeting, it can also be requested via email from the office.

The Linton Parish Council also currently has four vacancies for co-option, if you would like to find out more about the role of a Councillor please get in touch with the office. Although Councillors are volunteers and do not receive any remuneration for their work in the Parish, it is a rewarding role in the community and a chance to be involved with decisions affecting the village. Any queries, please don't hesitate to get in touch.

Clerk.

Planning Updates November 2020

BACK INTO lockdown, but Planning Committee meetings never stop: only three meetings this month!

In addition to the regular meetings with Planning Officers, we were delighted to take Stephen Kelly, Head of Planning at SCDC, around Linton. Sites with specific issues (current, recent or historic) were pointed out, general village concerns were discussed, as was the future of Linton in the wider plans for the area. We had had snow so the river was flowing high and fast, so we could show what LPC had done to mitigate flooding, as advised by Ecologists, Environment Agency and SCDC. The surface water flooding was evident, running into development sites and the pools by the Fire Station - only water and not sewage on that day - but gave an opportunity to mention those aspects of our planning objections. We hope Mr Kelly now understands why we are protective of our village and that we have already done our share towards providing housing. No more new estates - we are full!

The Linton Design Guide and Appraisal was due to be updated this year, but Covid 19 intervened with the practical work. We hope that working parties can resume soon - volunteers welcome. Names have been requested for the Horseheath Road development. Ideas around old field names, historic connections or other points of interest are welcome - please help!

Bartlow Road - Yet more Discharge of Condition applications. Minor ones have been approved, but major conditions cannot be discharged as they are unworkable, conflict with other submissions and amendments or the original consents. Further work on site has been reported. The EA flood maps have been amended which will require amendments to the Drainage scheme. The new maps still do not include surface water flooding and so do not show the known extent of flooding at this site.

Horseheath Road - House building has started which might be premature; again reported to enforcement. A meeting with the developer has been arranged.

41 Back Road - The applicant participated in a meeting, where the reasons for felling trees, especially the stately Beeches at the corner of Back Lane and Coles Lane, was questioned.

Other applications include welcome restoration to listed buildings, extensions and tree works.

Meeting updates.

Cambridgeshire and City Local Development Plan (LDP). Where will new housing go? New communities or add to villages or the City? Only a few villages need new housing. The basis of the LDP was questioned as it is based on out-of-date data and an inaccurate algorithm for housing numbers. The "churn" of housing (downsizing to bungalows, freeing larger houses for families, leaving small houses for starter homes, etc) is not taken into account; not everyone needs a new house and there is no proven need. The needs for home working and re-purposing of offices and shops was raised, along with changes in transport that result. Green spaces, landscape, farm land is threatened. Why had GCP given grants to groups aimed at bringing more industry to the area, despite our lack of water, etc. Paying for new transport plans might be through large developments around Linton/Bartlow/A1307 to link to Haverhill - worrying for us. It is good to hear such varied opinions. The LDP requires public input, please send comments when consultation begins.

Meetings on Market Square, changes to pub licences and applications for pavement licences, are reported in LPC minutes. Caring for God's Acre - Recording monuments. Volunteer help to record the older memorials in the Cemetery, while they are still legible, would be appreciated (those in the Churchyard have been recorded by Dr Cox).

Cllr Enid Bald

A J Pest Control Ltd

Local Professional Service
Member of NPTA
Domestic/Commercial/Agricultural
Experts in all areas of pest control



Mice, Rats, Wasps, Bees, Hornets, Moles, Moths, Ants, Bed Bugs, Fleas, Flies, Squirrels, Birds, Woodworm.

Tel: 01799 542 505 Mobile: 07855478824

E-mail: info@ajpestcontrol.com www.ajpestcontrol.co.uk

COOPER BARNES AUTOMOTIVE

£50
CASH BACK CAR
BODY REPAIR.

Insurance claims, bring your vehicle to a place convenient to you, not to your insurance company.

Call us for details and we will guide you through the simple process.

Service delivery to BS 10125 standard, independently evaluated by a competent third party certification body.

Approved repairers for major insurance and fleet management companies.

Cooper Barnes Ltd
2 The Gnip Ind. Est
Linton, CB21 4XN
T: 01223 880603 E: repairs@cooperbarnes.co.uk W: www.cooperbarnes.co.uk

TBC'S APPLY

THE 1:1 DIET

by Cambridge Weight Plan®

NEW
YEAR
NEW
YOU!

- ONE-TO-ONE SUPPORT
- FREE WEEKLY WEIGH-INS
- NO JOINING FEE
- STEPS TO SUIT YOUR LIFESTYLE

Contact your local Consultant:

Kim Davidson 07946 462790

email kimdavidson.cwp@outlook.com

facebook CWPwithKim instagram @one2onedietwithKim

LINTON PAVING COMPANY

YOUR LOCAL LANDSCAPING
BLOCK PAVING & PATIO
SPECIALIST.
PROPERTY MAINTENANCE
Int/Ext Painting, General Repairs
FRIENDLY SERVICE.
FREE QUOTATIONS
Tel: Andre Jacobs

Mob: 07765 594398

Office: 01440 702498



Neil Claxton

Painting & Decorating

Interior/Exterior

Rooms Emulsioned
from £120

FREE ESTIMATES

Tel: 01223 893487

Mobile: 07724073045

E-mail:

n.claxton925@btinternet.com

ProClean

'Your Complete Cleaning Solution'

- *Carpet Cleaning *Rugs *Stain Removal
- *Car Valeting *Caravans *Motor Homes
- *Upholstery Cleaning *Stain Protection
- *Floor Cleaning / Scrubbing / Sealing / Polishing
- *Pressure Washing of Patios Paths & Driveways
- *Domestic Cleaning * Top Ups & One Off Cleanings
- *Gutter / Fascia Cleaning

*Contract Office Cleaning (Flexible Options)

TEL: 890433 Mob: 0777 375 8355

74 Bartlow Rd, Linton, Cambridge, CB21 4LY

De-Salis Wealth Management

Associate Partner Practice of St. James's Place Wealth Management

SPECIALIST ADVICE ON

Personal Financial Planning - Pension Planning
Investment Planning - Protection Planning

Ian Cross DipPFS

01223 892821

E-mail: ian.cross@sjpp.co.uk Website: www.de-saliswealth.co.uk

De-Salis House, 6 Hillway, Linton, Cambridge, CB21 4JE

The Partner Practice is an Appointed Representative of and represents only St. James's Place Wealth Management plc (which is authorised and regulated by the Financial Conduct Authority) for the purpose of advising solely on the group's wealth management products and services, more details of which are set out on the group's website www.sjp.co.uk/products. The 'St. James's Place Partnership' and the titles 'Partner' and 'Partner Practice' are marketing terms used to describe St. James's Place representatives.

ABBREVIATED Minutes of the Meeting of Linton Parish Council held on Thursday 19th November 2020 via Remote meeting via video/telephone conferencing.

Apologies for Absence received from Cllr Paul Poulter.

Councillors' Declarations of Interest.

Cllr Kate Kell Agenda item 178/20/21 and 185/20/21

Councillor Vacancies; There are now four vacancies for Councillors

Chairman's Comment; None

Open Forum for Public Participation.

Cllr John Bald updated the council regarding the preliminary discussion with Mr. Max Read from Castleburg Construction who have surveyed the site and submitted a detailed proposal which would allow the LPC to have the skate ramp in place by next summer. Cllr John Bald would like to use the proposal to invite tenders for the Skate Park from all companies that had previously expressed an interest in the project.

A resident spoke about the ongoing problems regarding the Market Square with regard to parking and access. Several questions were raised and noted. The owner of 38 High Street stated that they had concerns about obstructions on the Market Square and hoped that the legal ownership would be dealt with as soon as possible. The owner of The Linton Kitchen asked if partial use of the Market Square would be considered by the Parish Council.

A resident living in the High Street objected to having a bench installed either side of the telephone box due to potential noise and nuisance, especially at night.

Matters Arising/Clerks Report.

Clerk updated the council that the Camping Close bins are on order with a delivery date end of December and should be installed in the New Year.

Planning Matters.

Barlow Road.

Cllr Enid Bald updated the council that more smaller conditions had been discharged but major ones continue such as drainage and landscape and that inaccurate information from the developers had been received regarding alleged pipeline, all of which was still ongoing.

Horseheath Road.

Cllr Enid Bald gave a verbal update that it was believed that building work had started above slab level and had been reported to South Cambs District Council Planning Enforcement.

Consideration of the recommendation from the Planning Committee to employ CN Historic in relation to registering any sites of interest to Historic England.

It was discussed to employ the services of CN Historic regarding the registration of sites with archaeological and historical interest. Cllr Amy Smith proposed to employ CN Historic with a budget up to £2,000. Cllr Enid Bald seconded. Agreed.

Consideration of the District and County Councillors Report for November 2020.

In addition to the reports available on the website it was added that discretionary payments are available for businesses affected by Covid-19 from SCDC and businesses were encouraged to apply. District & County Councillor Henry Batchelor also stated that businesses should prepare for Brexit in six weeks' time and be prepared in the event of a no deal situation. The A1307 GCP, Hildersham crossing was experiencing problems regarding the land required. The vacancy for Local Highways Officer has yet to be filled and all issues should be sent via the reporting tool, if urgent emailed to the District Cllr. The District Councillor also advised that the SCDC is looking to take some enforcement powers from the police regarding parking enforcement, however, he advised that this would not be a quick process.

District Cllr John Batchelor spoke about Local Planning moving onto the next steps regarding future development. On the present calculation up to 2041 the number is between 40,000 – 62,000

homes required in South Cambridgeshire. These are not additional houses and there are already 36,000 in the local plan.

Finance.

Consideration of a donation to Linton Fire Station for Christmas lights. Cllr John Bald proposed £100.00 donation. Cllr Merrie Mannassi seconded. Voted. All in favour. Agreed.

Consideration of quote received from Herts & Cambs Grounds Maintenance to collect and deposit cuttings from large area of Leadwell Meadows. Cllr Brian Cox proposed the quotation was accepted and work commence. Cllr Amy Smith seconded. Voted. All agreed.

Consideration of the quotations received for Street Lights energy supply submitted by Utility Aid. It was discussed and agreed that Cllr Lee Gardner would carry out further research into energy prices and the quotes received from Utility Aid. The decision to accept the quote was deferred until more information could be secured.

Neighbourhood Plan

Update on Neighbourhood Plan Survey Report and Meeting held on Thursday 12th November. Cllr Kate Kell updated the council that the Neighbourhood Plan group had held a meeting last week and are making good progress. A referendum is expected May 2021.

Market Square.

Update on the sourcing of legal advice regarding ownership of the Market Square. Cllr John Bald stated that the council needs to get the title registered, we have the deed, and no one has anything that contradicts what the deed states. The original deed of the Market Square has been requested from Ashtons solicitors and official copies of the Title Deeds of adjacent properties had been ordered from the Land Registry.

Cllr Lee Gardner proposed that the Parish Council accept the quotation from Holmes & Hill solicitors. Cllr Merrie Mannassi seconded. 8 in favour with 1 abstention. Agreed.

Consideration for all parking restrictions and permits relating to the Market Square be withdrawn until legal ownership and rights of access are clarified.

Cllr John Bald said that until we have the clear legal picture regarding ownership of the Market Square the Parish Council is not going to be able to resolve the issue without escalating it. The legalities needed to be clarified. The Chair explained that the parking restrictions are now causing issues. Cllr Merrie Mannassi proposed that all parking permits, restrictions, and notices be removed from the Market Square. Cllr Enid Bald seconded. Voted 8 in favour. 2 Abstentions. Agreed.

Consideration of letter from Lucy Fraser MP. Cllr John Bald suggested a response saying thank you for her consideration and the Market Square is an issue of great concern. The PC has held a public meeting to allow all residents to voice their comments and concerns.

Consideration of notification from 3C BC Building Control of a Dangerous Structure report for the South Wall on the Market Square.

Cllr Brian Cox stated that it has never been the PC wall, the wall has been in poor condition for many years. Due to the risk to the public the council decided to erect safety barriers in front of the wall until such time as a repair is made.

Consideration of Parishioner having access issues on the Market Square. The Parish Council is seeking clarification regarding the ownership of the Market Square and will address the issue once this has been resolved.

Consideration of Parishioner requesting clarification regarding availability, fair usage and charges for using the Market Square. The PC is seeking legal advice on the ownership of the Market Square and will address the issue once this has been resolved. No permits or use of the Market Square will be permitted until this is resolved.

High Street.

Consideration of a revised location for a bench on the High Street following Parishioner objections to place on the cobbles near the phone box.

Cllr John Bald thanked the resident for his comments earlier in the meeting and said that the PC will consider other locations and make a decision that is in the interests of all parishioners.

Traffic.

Update on Traffic Survey Results. Cllr Kate Kell updated the council on the traffic survey and suggested that a Traffic Working Group meeting was required. It was disappointing that more businesses and High Street residents did not respond knowing the ongoing issues in that area.

GCP/A1307 Update. Verbal Update from Cllr Enid Bald. Cllr Enid Bald asked for public support regarding the bus lane proposal.

The Meadow Recreation Ground.

Consideration and review of the provision for play equipment in the general play area and under 8's play area.

Cllr Enid Bald proposed that the clerk request for quotes to make good and repair or install and improve equipment from known suppliers and obtain quotes to bring back to the council. Cllr Kate Kell seconded. All agreed.

Consideration of the request from the ACF to use the Bowling Green for the cadet forces. Cllr Enid Bald proposed that we speak with the Pavilion Committee, the Cricket Club, the Football Club and the Cadet forces to see if the area can be jointly used. Cllr Sharon Parker seconded. 6 in favour with 3 abstentions.

Trees, Biodiversity, River Care and Wildlife.

Wild Trout Trust update following the site visit of the River Granta. Correspondence item 37 refers. For Information. This item was deferred to the next meeting on Thursday 10th December 2020.

Parishioner request for a Cherry tree to replace the felled tree behind the Fire Station. This item was deferred to the next Full Council meeting on Thursday 10th December 2020, but it was noted that there are three trees due to be delivered imminently to the Parish Council, one of which could be suitable for this area.

Youth.

Beacon Youth Trust consideration of reports. Written report available on both the public and councillor portal on the website. Summer report 2020, September 2020 and October 2020.

This item was deferred to the next Full Council meeting to be held on Thursday 10th December 2020.

Linton News.

Three articles required for Linton News – January Edition. Deadline Monday 7th December.

Cllr John Bald will submit an article on Parking.

Cllr Enid Bald will submit regular reports on Planning.

Cllr Enid Bald in conjunction with Cllr Kate Kell will submit an article on Tree Planting.

Clerk will introduce Dates for your Diary and Parish Progress.

Full Minutes are available on the Parish Council website. Clerk.

The Village Hall, Coles Lane, Linton,
Cambridge CB21 4JS Tel: 891001

Clerk to the council – Mrs Jenny Seaward

Email: enquiries@linton-pc.gov.uk

Website: www.lintoncambridgeshire-pc.gov.uk

Facebook: www.facebook.com/lintonpc

Office open: Monday, Tuesday, Wednesday and

Friday 9am – 12noon. Closed on a Thursday.

Full Council meetings are held at the Cathodeon Centre, commencing at 7.30pm on the third Thursday of the month, except for August.

Bentens

Accountants and Tax Advisors

Abbey House, 51 High Street
Saffron Walden

01799 523053 www.bentens.co.uk

The Darryl Nantais Gallery
Fine Art, Framing & Restoration



Brian Seymour



Darryl Nantais



Magdalena Morey

We offer a wide selection of artwork, contemporary & traditional, local & international, including paintings, prints, ceramics, glassware, sculptures & jewellery. The Gallery also offers bespoke framing, picture restoration and cleaning.

59 High Street, Linton, Cambridgeshire CB21 4HS
01223 891289 - www.linton59.co.uk

Find, follow & like us on Facebook, & Instagram for regular news updates

Tuesday to Saturday 10am to 4pm

- 24 hour emergency service
- Boiler breakdown and servicing
- Boiler upgrade



KA PLUMBING & HEATING

Office: 01223 890554

Mobile: 07890 576608

kaplumbingheating@hotmail.co.uk



BRICK MARKETING
Injecting power into your marketing

brick-marketing.co.uk
hello@brick-marketing.co.uk

Cambridge Art Makers

A friendly and inspiring workshop and studio. Expert tutors offering a diverse array of dynamic, engaging creative courses.



Make time for Making!
Claim your creativity it's good for you!

6 Lintech Court, Linton
www.cambridgemakers.org

sqcarsales.co.uk

for service & quality

SQ Car Sales

Quality used cars

t: 01223 778 448 m: 07908 128 164

G. DYE & SONS
GENERAL BUILDERS,
GROUNDWORK & MAINTENANCE,
CONSERVATORIES & UPVC WINDOWS, KITCHEN & BATHROOM REFITS

ALSO INTERIOR & EXTERIOR DECORATING
REFERENCES AVAILABLE

For enquiries please call

Mobile:

07961 342887

Tel: 01223 892089

georgedye738@btconnect.com



Free Estimates