

The Linton News
25 years
and still
going strong

Established 1987

Over 2,350 copies
distributed
free in Linton,
Hildersham,
Hadstock &
Bartlow

THE LINTON NEWS

www.linton.info e-mail lneditor@linton.info

March
2012
Vol. 25 N°12
Publication date
Monday 5th March

E & E PLUMRIDGE
Design & Print
41 High Street
Linton
01223 891407

Linton librarian retires

LINDA Pearson became a librarian almost by accident. She was visiting the Linton veterinary surgery one day in 1990 when she overheard Helen Fovargue, library supervisor, worrying about finding a new assistant. So Linda applied for the job and soon became a librarian working in the old library at the village college.

Apart from the cramped space, Linda describes the old building as cold, with no toilet facilities and isolated during holidays and evenings. Linton was the last library in Cambridgeshire to use the old Browne pocket issue system.

When the library opened in 2000 in the newly built Cathodeon Centre, Linda had become supervisor and really appreciated the modern building with computer facilities for staff and public, a wealth of new books and the extra space allowing for a specially designed children's area.

Although many homes in Linton have computers there are households that do not. The public computers are well used, particularly by people surfing the internet and job hunting. There are some facilities



Linda with the library assistants. From left: Kathy Bishop, Liz Cox, Linda Pearson and Caroline Mulley.

like ancestry.com, which is freely available to search at the library.

Linda is sad to leave the library. She said she will miss the people and consider one of the perks of the job was meeting the wide range of library users, adding; "You have to go shopping or to the dentist but you don't have to go to the

library. You go for interest, information, escapism or entertainment."

Linda considers every library user is important but for children just learning to read it is essential that they feel comfortable. "I loved having them in the library, especially for story times. I would be serving customers and listening to stories as

well. We have some really good people doing stories and songs." she says.

After 22 years Linda finished at the library on 27th January. Until the new system starts in April, library assistant Caroline Mulley will be on duty. Hopefully she will be permanently appointed to Linton.

Kate France

Picture by Roger Lapwood

Be the best you can be, LVC!

ON Friday 27th January, year seven pupils at Linton Village College were lucky enough to meet Dr David Hemery CBE, Olympic 400m hurdles gold medallist. He began by presenting the students with silver medals, printed by the Royal Mint, for completing the *Be the Best you can Be* programme.

This 21st Century Legacy programme was founded by Dr Hemery and was designed to help children to realise what they can achieve and try to be the best they can be. He then gave the pupils a presentation about how he strained to be the best he can be. He fuelled the students' minds with quotes such as *there is a spark of greatness in everyone* and *The only person holding you back is*



Dr David Hemery reveals the plaque at the new building at LVC

Picture by Elite Wedding Photography

you. These quotes, the message they portrayed – never give up on yourself – and his amazing

story have inspired all of the students in aspiring to be the best that they can be.

Imogen Annett and Shannon Morris-Oldfield of 7RD

Very special church assemblies

ON Wednesday 25th January and Thursday 26th January, the pupils at Linton Heights took part in two church assemblies at St Mary's Church in Linton. We sang songs and representatives from each class presented their ideas about our theme of Gifts. These were based on giving and receiving gifts from God, talents and gifts and being thankful.

Contributions from the different classes included a short story on the theme of giving and receiving written by the pupils themselves. Some children chose and presented gifts from God, which included love, happiness, hope, the world, the future, life and Jesus. Some of the classes presented their talents, including a piece of drama about cricket. One class presented the moving story of the *Praying Hands* and another told the story of the *Giving Tree*. The children then finished their presentations with a short prayer.

Each assembly was very special and we were thrilled with how well the children presented their ideas and how thoughtful they were. We were pleased that Rev Steve Griffiths was able to join us on both occasions. Well done everyone and thank you for all the effort that went into in making each assembly so worthwhile.

Louisa Kenzie, Deputy Head



Special assemblies for Linton Heights

Picture supplied by Louise Kenzie

ACEs enjoy a late Christmas lunch

OUR festive lunch one December fell victim to the weather, so we held it a couple of months later. That cheered us up so much we have again held our festivities in the bleakest part of the year – ACE could be re-writing the social calendar!

Again, the buffet lunch was cooked by local firm Elite Catering – copious helpings, smashing savouries and gorgeous gateaux – bang go all resolutions to lose weight. We enjoyed the treat; thank you Janet for organising the food. As entertainment, we had a quiz – another of Cynthia's talents. This was less than serious, but certainly gave the grey cells a work-out – using up a few calories – but mainly we just had a good natter.

We did not charge for the buffet, but donations given will help fund the community warden. As money from public bodies is dwindling, we will increasingly have to raise funds to retain the scheme, which helps keep our elders living independently in their own homes.

The next event should be another treat. On Tuesday 27th March, we will welcome Peter Carter to speak at our lunch. Peter is the last Fenland eel man, making his living from catching eels as generations of his family have done. Now he is alone, and will tell how he makes eel traps and continues his trade. He has a fund of excellent stories, so expect an entertaining lunch, which follows the aquatic theme – fish and chips.

Meet at the church pavilion at 12.30pm. All older people welcome.

Enid Bald, 891069

News from the Sports Centre and the clubs that use it

CHRISTMAS is now a distant memory and already Easter is almost upon us. The beauty of these holiday periods is that they always offer up plenty of motivation to exercise in the way of treats, especially for those of us with a sweet tooth.

Over recent months we have been pushing our brand new fitness suite, but this month I'd like to pay tribute to the many great clubs that also utilise our facilities throughout the week and at weekends. The clubs bring a variety of different sports and activities to the centre and offer up something for everyone both young and old.

Following are the names of the clubs that use LCSC to host their activities, should you require further contact details please feel free to either email us at lcsc@lvc.org or call us on 890248, alternatively you can find information online.

For the children:

Dynamic gymnastics, All 4 One fencing, tae kwon do, karate club, Linton badminton club, Linton junior's cricket club, Aztecs football clubs, Cambridge Cangeros trampolining, junior tennis, Cambridge badminton academy

For the adults:

Eagle badminton, Linton Granta badminton, men's keep fit club, Linton netball, Weston Colville cricket club and, new to the sport's centre, tai chi and qigong for health.

In addition to both the clubs and fitness suite we have added a new class to our already comprehensive list; the class is Abs Blast and is aimed at specifically working those stomach muscles. The class is run by the excellent Dan Booker – who also runs several of our other classes – and takes place on a Tuesday evening in the dance studio from 7.15pm to 7.45pm, the class is open to everyone over the age of 16.

Please do take the time to visit our website and check out what we have on offer at www.linton-sport-fitness.co.uk, also if you have an idea for a club, or would like to consider using the centre to house a club you already have up and running please email us at lcsc@lvc.org.

We hope to see you soon.

Steven Austin, Community Business Manager

See page 4 for news of the Men's Monday keep fit club

The Linton News, 25 year's old
THIS issue completes 25 years of the Linton News. To celebrate, next month we hope to have some colour in the paper, so if you have a good article with a colour picture, please send it to me at the address on page 3.

Editor

Too good for jumble...

A PAIR of ladies leather Hi-tec walking boots, worn once, size 6, a Russell Hobbs Breadmaker and a Dell microwave cooker are new this month. The Canon photocopier FC-1/2/3/5/22 or FC-6/7/11, the Degas framed print "Dancing class" 18 in x 24 in (perfect condition) and a Boots infra violet/infrared health lamp are all still available.

The Sharp electronic typewriter made £15 for ACE and the computer work station raised £10 for Sawston Guides.

To buy any of the above or to offer an item to profit a charity, please phone Kate France 891602 or email kfrance@profsoundconsult.com

NB The donor chooses the charity to receive the money.

THOUGHTS FROM THE GRANTA RANTA

The opinions expressed in this article are not necessarily those of the LN team.

Despite popular opinion, the ranta is NOT written by the same person each month. If you would like to rant in this paper please contact me at the address on page 3.

WE are always to quick to judge and complain and it saddens me greatly to see residents complaining about minor issues but these people never stand up and say thank you when something good is done.

It also saddens me immensely that the generosity of some and their kindness to our village often gets overlooked.

It's a shame that without their help and support, certain events would not happen.

Camgrain – I thank you for your help and support and money raised within our village and for our schools, for our fabulous fireworks display that brings families into our village from far away and for supporting our beautiful flower festivals. Not just one year or two but year after year after year. Thank you!

Camgrain, they are a local village business, looking after residents and events, but also I was made aware of their help during our snowfall. On Sunday 5th February we woke to beautiful white, cold fluff, the children played and the parents became children again and fun was had by all.

However as the day draws to a close we all start to think about the following day. Monday morning work/school day.

Many hoping for a snow day, many panicking about getting to work and some fearful of driving or walking as an overnight heavy freeze is predicted!

For me, work plays an important part of my life as does my children's education. Ideally, I would love to go to bed on the Sunday evening and get up on Monday to see the snow has disappeared but in reality we know that this is nearly impossible.

However, to wake up on Monday to hear that the village college had opened because the school drive had been cleared by Camgrain and their snow plough – I have to say this company has yet again come to the rescue.

So, statistically, we are looking at 800 children who were able to attend education (although I am sure some of the children would not have been quite so excited about this). All staff and teachers were able to attend school and there were also many, many parents and carers who were able to go to work and didn't have to stay at home with children, due to school closures (I am aware that more and more companies have a no pay snow day policy). So all-in-all a snow day is fun. However, it effects more than just the children, it has a major affect on the families, parents and potentially has a massive financial effect on people too.

So let us not overlook the good things that this company does, without them we would miss out on so much. This Granta Ranta is dedicated to saying thank you. Thank you Camgrain for all that you do for our beautiful and wonderful village.

Entrepreneurial spirit alive in Linton

A LINTON resident has developed the world's first eBook gift shop, now open at www.oldlondonbooks.co.uk

Bruce Hunt (you may have seen him manning the bookstall at the Linton Flower Festival) opened his eBook shop in June last year and has spent six months building the software that now runs the gift diary.

For the first time you can buy eBooks for yourself, or have them sent to a friend, on any day

you choose, up to eight weeks in the future.

All the books are available for the Kindle or any other eReader, including the iPad, something else no other eBook shop can offer.

There are novels, books about London, fishing, motor-ing, cooking, flying and even smoking (how to, not how not to). More titles are added every month.

Bruce Hunt

MORE THOUGHTS FROM THE RANTA

We are very lucky to have two rants this month both about the recent snow.

"IN Canada they get thirty feet of snow a second and yet the roads are never closed" offers up one idiot. "In Norway it snows so much that some children have never seen grass" says another. I am of course referring to the recent cold snap which, as usual, brought a small amount of disruption to a small number of people. Linton was no exception; some of our smaller roads became, at times, quite treacherous though the High street remained well gritted and passable.

Annoying as the snow is, I find it nowhere near as annoying as the people who constantly bemoan our inability to cope with it.

Around this time of year, when the white stuff starts falling from the sky, I count the seconds before I am regaled with a story about recently emigrated offspring, valiantly battling the elements year on year, putting the rest of us to shame. "A few inches of snow and the country grinds to a halt" they snort. What they seem to forget is that Britain is simply not geared up for extreme weather.

The UK is designed to function in a light drizzle at 10°-15° Celsius and as a nation we thrive in these conditions. Give us anything outside this average and we crumble. Our schools live in fear of the smallest risk to their pupils so who can blame them when they decide to close in the name of safety?

Measures to counteract extreme weather are costly, and we need to realise that there is a choice to be made. Be prepared for a substantial increase in our council tax, or deal with the relatively small and short lived inconvenience which the cold weather brings, without whingeing.

And you have to admit, the snow can be fun!

just AskSARA!

A WEBSITE offering help and advice to people with a range of day-to-day needs is now available with information localised for people living in Cambridgeshire.

AskSARA is a self-help guide which enables you to identify equipment that may help in your daily life. It will take you through a series of guided questions leading to general advice and recommendations on what equipment would be suitable to meet your particular needs and where to get this locally.

The website is easy to use and widely accessible regardless of age or ability. It will be featured as part of the staying independent, safe and well roadshows taking place in libraries across the county during 2012.

To visit the AskSARA website or for the dates when the roadshows will be in a library near you, see www.cambridgeshire.gov.uk/social or call Cambridgeshire Direct on 0345 045 5225.

Amanda Davies, Communications Officer
Quality & Transformation Team

Lead the way with Girlguiding in Linton



Three Rainbows enjoying their meeting

Picture by Kelly Baldwin

GIRLGUIDING Linton is calling on local residents to give up a little time as a volunteer to enable local Rainbows, Brownies and Guides to enjoy a wide range of exciting activities. Guiding offers girls aged five to 25 a space to make new friends, take part in challenges and games in their weekly meetings and district events such as campfires sleepovers, holidays and trips to the BIG GIG, a guiding-only pop concert.

To make sure that guiding can continue to offer such fun and adventure to all girls who wish to join, we are on the look-out for adults to join our current group of friendly volunteers and give a little time to support guiding in the village.

Edith Osborn, Linton's District Commissioner, said: "Volunteering in guiding gives me a huge sense of achievement. Seeing the girls grow in confidence is very rewarding. As a volunteer, I've also been able to develop my own skills and have as much fun as the girls themselves." Guiding is still highly popular, with around half a million members in the UK, and over 90 girls involved in Linton.

If you are interested in joining us as a girl or adult volunteer, visit our local website www.cambseastguides.org.uk or ring Edith Osborn, District Commissioner on 291375 to find out more.

Kate France

Get involved with Conkers

AS a parent of a child under five, I have recently joined the advisory board of Conkers children's centre.

The advisory board is a group of local partners from the health service, education, parents and voluntary groups, who meet four times a year to oversee the children's centre and give their views. Conkers is looking for two more parents who would like to get involved and join the advisory board.

Are you a parent with a baby or toddler? Have you been to the children's centre? Would you like to have a say and shape its future? If you're interested, please contact Conkers on 893594 or 07768 008919.

Owen Barnicoat

The Flower Boutique celebrates five years

ON 7th March, Leen Van den Eede will celebrate five years running the well known florist's in Linton.

Leen trained and worked in New York, and after arriving here with her husband she quickly established her reputation as a contemporary and traditional florist with a special flair for bridal flowers.

Her wedding flowers have featured in Wedding Flowers and Cosmopolitan Bride magazines. With the business

going from strength to strength, she has just moved to bigger premises at 41 High St where she can offer free private bridal consultations.

Why not check out the website, www.theflowerboutiquelinton.co.uk, or pop into the newly decorated shop next door to the refurbished bakery.

We wish Leen every success in her new premises and congratulate her on her first baby, due in April.



The Flower Boutique
Picture by Roger Lapwood

Linton Village Cricket Club Registration Day

Sat 24th March 2012
at the Pavilion on the Recreation Field
from 10- 12.30pm.
look forward to seeing you there

Singing Lessons

Sarah Rosewell
BA (Hons) Music

Individual singing lessons available for all ages and abilities

Whether towards exams or purely for pleasure
* CRB Checked
* Based in Linton

For more information contact:
Sarah on 01223 894861

Email: sarahrosewell@hotmail.com

PERSONAL PHOTO ORGANISER

Helping you to organise, manage and preserve your photo collection.

- *Photo books
- *Photo slideshows
- *Restoration & editing
- *Workshops and talks
- *Video conversion
- *Scanning

01799 522938
www.bless-ewe-creations.co.uk

the flower boutique

Sunday 18th of March

Mothers Day

Visit our NEW SHOP, call us or order online

41 high street . Linton . 01223 891740

www.theflowerboutique.co.uk

mops
MOPS HAIR SALON
HAIR BY JO DENNY
Women | Men | Children
41 Linton High Street
(Behind North's Bakery)
t: 01223 893 285

ClearTax & ACCOUNTING LTD
All your tax and accounting needs, personal and business.
Specialist in tax planning
Free initial consultation
Tax returns from £99^{vat}
Ltd Company Package from £699^{vat}
Local, based in Hadstock
t: 01223 894036
e: janine@cleartax.co.uk
www.cleartax.co.uk

DRIVES & PATIOS
HOUSE EXTENSIONS
HOME IMPROVEMENTS
PAINTING DECORATING
A & T Groundworks Ltd
FRIENDLY SERVICE LARGE & MINI DIGGERS FOR HIRE
Call Ashley on 01799-520298 - Mobile 07803745637

PLUMBLINE

Plumbing and Heating Engineer
Professional Domestic Plumbing Services

Including Property Maintenance
Painting: Tiling: Plastering: Carpentry

Call John on
01223 893903

Supcik@talktalk.net
Fully Qualified and Insured

Friendly and Reliable Service No Job To Small



Homoeopathy and Healing

Our body is our best friend, it speaks to us through symptoms, aches and pains – signs of imbalance.

Hear the call and respond respectfully and with love.

Homoeopathy is proven to be a safe, gentle and effective method of restoring balance and eliminating symptoms of disease. Suitable for children and adults.

Contact **Marlow Purves** (LCH MARH)
at Linton Complementary Health Centre 01223-891145
or email enquiries@lintonhealth.co.uk

Readers write...

Post and email addresses and deadline for letters are below. All letters for publication must have a full name, address or phone number to enable us to check authenticity. Letters may be edited. Opinions are not necessarily those of the Linton News.

Anonymous letters will NOT be published but names and addresses may be withheld if requested

The Linton News has been asked to publish the following.

This letter was sent to Linton Parish Council on 5th December 2011 expressing concern about the possibility that the verge at the junction of Symonds Lane and Back Road may be used for parking and access to the proposed allotment site. To date (3rd February) no response has been received.

Linton Parish Council

Ref: Proposed allotment site off Back Road, Linton

With regards to parking, if this cannot be accommodated within the allotment site, then the proposed site is not practical.

A suggested alternative parking area is the wide verge on Back Road opposite the Symonds Lane junction. I wish to remind councillors old and new why the verge at this location is so high. In years past before the level of the verge was raised, this area of verge was used for overnight lorry parking and was a site of anti-social behaviour. The young lads of the village used to congregate on the verge in their cars, play very loud music, and dump cans, bottles and food packaging including takeaway cartons, on the verge, which others had to clear up. You could not enjoy an evening in the garden in the summer due to the loud music and foul language. As a result of the continuing problem the level of the verge was raised to prevent cars driving up on to it; this solved the problem. This suggestion would allow this anti-social behaviour to return to this area. The local residents, of which I am one, do not want provision to be made for this anti-social behaviour to return.

From the point of safety for road users, due to sight lines and the proximity of the Symonds Lane T-junction, vehicles having access and egress from this area of verge would create an unacceptable safety hazard. I am sure Cambridgeshire County Highways will have comments to make on the safety aspect.

This area of verge is not a suitable alternative to parking within the allotment site, if vehicular access to the site cannot be obtained, this site should be rejected.

P Cheesmur, The Grove

Good Samaritans please step forward

Dear Editor

I am keen to contact the two kind ladies who accepted responsibility for the elderly lady who had lost her way on that cold Tuesday evening 31st

January. Please could either of them—one may be called Hilary Bradley—call me so I can thank them personally.
Kate France, 891602

OUR THANKS

Dear Editor

I knew that my last day of work was going to be emotional but I wasn't prepared for what happened next. I walked through the entrance door to be greeted by lots of mums, dads, friends and children from playgroup. To my surprise they had arranged a party/baby shower for me. To see them all there I stood and cried, something I did for the next two hours. I am very grateful for all the lovely gifts I received from the parents, carers, friends and children, also the amazing staff which I am very proud to be part of. I am going to miss playgroup and the

great moments that come with this setting.

As soon as our lovely son is born I shall be back to visit you all. Boys and girls of Linton Granta playgroup, a big thank you for your hugs, kisses, laughter and smiles which I received daily. Thank you to staff and committee for putting up with me, and for all the kindness from everyone. So a very teary goodbye and thank you for making my last day at such a fantastic playgroup one to remember.
Anna and baby Ferreira
By email

The lights at Nichols Court - a resident's view

Dear Editor

So many times have I put pen to paper and written my thoughts regarding Nichols Court and then saved it onto my computer to be left sitting there.

No more; this time I am letting my thoughts be read by yourselves.

I have lived in Linton since 1975 and brought my family up within this wonderful caring village and now my grandchildren also live here. I think myself very fortunate to have members of my family and several friends who live and enjoy their life with a good social and safe environment within Nichols Court.

Where has our community spirit gone?

Nichols Court has a fantastic community of some amazing people. Why are so many locals making our new and old residents feel so unhappy within their homes? If it's not the lighting in the car park, it's the lights from the windows in the corridors, (which has been resolved by thicker curtains!) and the security lighting.

I fail to see what the problem is and find it very hard to sympathise with those of you who are complaining about the

lighting. Please, please could you invite me into your home and let me witness what you are experiencing? Equally I will take you into my relative's flat and let yourselves feel the comfort and security that is offered.

I must point out that I believe that the lights are going to be switched off at 10pm (heaven knows who wants to be looking out of their window after 10pm).

Sadly, I know of one couple who are so distressed by so many comments, policies and procedures aimed at Nichols Court, that they are seriously considering leaving. I must add that many tenants have sold their homes to come and live in Nichols Court. Can you please try and imagine how they are now feeling welcome is far from it.

I hope that those of you who are creating so many unnecessary and minor excuses as to why Nichols Court should not be there, will never need to use the fantastic facilities and staff that we have within this modern building with a community of great characters.

Denise Coombe by email

OUR THANKS

For the manager of Linton Co-op

Dear Editor

On behalf of the residents of Nichols Court, a big thank you for kindly donating a shopping trolley for our use to transport large and heavy items to out flats. We really appreciate this gesture and everything the Co-op does for our residents and their generosity when we have fundraising events. Many, many thanks again.
Bel Griffiths, on behalf of the residents and the staff.

and from Linda

Dear Editor

I would like to thank all the people in Linton and the surrounding villages who have made the 22 years I have worked in Linton library such a pleasure. I am very sorry that my job there has come to an end, I shall miss it and you all very much, but keep on reading, your library needs you!
Linda Pearson,
Rhogarve Gardens

There are so many letters this month that we have had to move the WI article to page 6, back to page 3 next month.

LEARNING DIFFICULTIES / STUDY SKILLS TUTOR

I offer tutoring in practical learning skills and strategies for Secondary school students and adults

I am an experienced and successful teacher at Secondary / 6th form, with a background in Psychology, Research and teaching at Cambridge University

Contact Sheila Bennett
Tel: 01223 890171

Benten & Co.

Chartered Certified Accountants

We are a friendly, well established firm, large enough to deal with most accountancy and taxation matters.

Please telephone for an initial consultation (without obligation)

Abbey House, 51 High Street, Saffron Walden
Telephone 01799 523053
www.benten.co.uk



Little Hands Nursery School
Linton & Bartlow



Offers preschool care and education for children - 2 years to school age

High staff to child ratio Excellent Ofsted report

Sessions can be booked flexibly throughout our nursery day 9am-4pm in term time

For children old enough for funding (term after their 3rd birthday) 15 hours of sessions can be taken each week with no charge

Optional holiday clubs are available for children aged 2-8 years
Early starts and late finishes are available

For further information please contact
Mandy Norris - Nursery Manager : 01223 897945 e-mail lh-bartlow@btconnect.com
Little Hands is also at Bourn, Melbourn and Newton, visit the website at www.littlehands.co.uk

CHIMNEY SWEEP

J. L. WIGHT

Guild of Master Sweeps.

Qualified advice Problems solved.

Certificates issued.

www.camsweep.co.uk

01954 253315

26, Cow Lane, Rampton



PAULINE'S

CHILDCARE IN LINTON
FOR UNDER FIVES

Ofsted registered
Monday - Friday
Ring for details
01223 891890



Barn Owl

Bed & Breakfast

Accommodation available in recently completed Barn Owl Project
Located just off Linton High Street within easy walking distance of all Village Amenities

Converted Barn 1 Double and 1 Sofa Bed in a Self Contained Annex with separate Kitchen, Shower Room, Private Patio & BBQ facilities - HD TV & Free WIFI

Tel : 01223 894489
Mobile : 07584 430051
E Mail : Michelle@barnowlprojects.co.uk
Michelle Rhodes,
4 Market Lane, Linton,
Cambridge CB21 4HU

BED AND BREAKFAST

BAKERY COTTAGE
WEST WRATTING
CAMBRIDGE
CB21 5LU

also
Cottage and Converted Barn to rent for holidays, weekends and short breaks sleeping 6 and 4 people

Tel Carol on
01223 290492
07860 810689

THE LINTON NEWS Next Publication 2th April 2012
DEADLINES for ADVERTS Monday 12th March
NEWS ITEMS Wednesday 14th March

ITEMS FOR ADVERTISING MANAGER
We currently have no advertising space
Changes to ads can be sent to: Judith Rouse
email: adds@linton.info

ITEMS FOR THE EDITOR
Can be put in the Linton News Box in the Post Office
Editor: Wendy Foster email: Ineditor@linton.info
phone 891626

For distribution queries contact: Kate France 891602

LINTON DIARY

For entry in this list, ensure that your event is written into the diary in the Post Office, failure to do so could mean non-entry to the diary here.

You may also send an email with your event details to diary@linton.info, or use the form on www.linton.info.

Call 971797 for an audio version of the Linton News

Details of items in bold type may be found elsewhere in this edition.

WEEKLY

Conkers children's centre, 9am-12noon, Mon-Thurs call 07768 008919	CC
Whist drive, 7.30pm Mondays	VH
Chestnutbaby/toddlergroup, 9.30-11.30am Mondaysterrtime	CC
Linton Granta football bingo, 7pm Mondays	Pavilion
Linton theatre workshop, Mondays (call Joe 01440 703701)	
WEA, 10am Tuesdays	VH
Scrabble club, 10am-12noon alternate Tuesdays	CP
Linton Granta toddlers, 9.30-11.30am Tuesdays	LVC
Linton chess club, 7.30pm Tuesdays (349 314)	CC
Granta duplicate bridge club, 2-4pm Tuesdays	VH
IT club, 7pm Tuesdays	CC
Tots in tow, 10-11.30am Wednesdays, term time only	VH
Storytime, 2.15-2.45pm Wednesdays (term time only)	Library
Linton radio race car club, 6-10pm Wednesdays	VH
Carpet bowls, 7.30pm Thursdays	VH
The karate club, 5.15-6.15pm, Thursdays	VH
Parents, carers and tots Mocha house, 9.15-10am Fridays	CP
Buffy bus, 11am-12.15pm Fridays	Ashdon Baptist church
St Mary's church choir trebles, 6.30-7.15pm Fridays	St Mary's
Full choir, 7-8.30pm Fridays	St Mary's
Bridge club, 7pm Fridays	CC

For sports centre courses please call Linton Village College sports centre on 890248

MARCH

3 Farmers' market, 9.30am	LVC
3 Mothers' Union coffee morning, 11am	CP
3 Guides annual jumble sale, 2pm	Infants school
5 Camera club, 7.15pm	CC
6 WI, 7.30pm	VH
7 Lent lunch, 12noon	1a Hillway
7 Reading group, 8pm	Dog & Duck
11 Sunday club, 10.15am	URC
13 Gardening club, 7.30pm	VH
13 VIP group, 2pm	Chalklands
14 Lent lunch, 12noon	38 Symonds Lane
15 Parish council meeting, 8pm	CC
17 Music society concert, 7.30pm	St Mary's church
20 History society, 7.30pm	VH
21 CAMTAD, hearing help, 9.30-12noon	Health centre
21 Lent lunch, 12noon	7 Harefield Rise
22 NCPCC coffee morning, 10.30am	3 Mill Lane
24 Linton village cricket club registration, 10am	The pavilion
27 ACE event, 12 for 12.30pm	CP
28 Lent lunch, 12noon	11 Mill Lane
29 CAMTAD equipment demo, 10am-12.30pm	Scotsdales
29 Linton Granta playgroup, Peter Pan trail, 2pm	CP

APRIL

2 Camera club, 7.15pm	CC
3 WI, 7.30pm	VH
4 Lent lunch, 12noon	CP
5 Lunch club, 12.30pm	White Horse, Withersfield
7 Farmers' market, 9.30am	LVC

For Cathodeon Centre bookings please contact Sue Mudge, Hon Secretary on 07765 369266

Library times: Monday Closed; Tuesday 10.30am-1pm, 2pm-5pm; Wednesday 2pm-5pm, 6pm-8pm; Thursday Closed; Friday 10.30am-1pm, 2pm-5pm, 6pm-8pm; Saturday 10am-12noon.

Refuse collection: 12th, 26th, March

Recycling collection: 5th, 19th March & 2nd April

KEY: CC Cathodeon centre, CP church pavilion, D&D Dog and Duck, HC health centre, LH Linton Heights school, LVC Linton village college, RG recreation ground, URC United Reform church, VH village hall

Students 20% off THE ROOM Special Kids Prices



37 Bartlow Road, Linton
Tel: Pippa (01223) 890890

OPENING TIMES

Mon	Closed	Senior Citizens
Tues	9-5 pm	Tuesday & Wednesday
Wed	9-7 pm	Late opening until 7 pm on
Thurs	9-7 pm	Wednesday & Thursday
Fri	9-5 pm	
Sat	9-3 pm	

Cambridge Science Festival 2012



Fun for everyone at the Science Festival

Picture supplied by Henry Russell

WELCOME to the 2012 Cambridge Science Festival. This year we have over 180, mostly free, events running throughout Cambridge from the 12th to 25th March.

This year we are celebrating the boundaries that are being broken in science at events from racing mini rockets using lasers to learning about how the BBC's hit series Frozen Planet was produced.

There is something for everyone to come and see. We'll have the usual mix of interactive fun for all the family at our open days on 17th and 24th March, along with plenty for adults at our evening lecture series.

For more information and a programme, please call 766766 or visit: www.cam.ac.uk/sciencefestival.

Henry Russell, Science Festival Assistant

CAMTAD needs your help

The Campaign for Tackling Acquired Deafness is looking for a volunteer receptionist for its monthly hearing help session at the Linton Health Centre.

If you are interested in this position either go along to the session which takes place every third Wednesday of the month 9.30am-12noon to discuss the role, or contact the office on 416141 or admin@camtadcambs.org.uk. ACRB check and references are required.

There will be demonstrations of hearing help equipment between 10am and 12.30pm on 29th March at Scotsdales Garden Centre in Great Shelford.

There will be demonstrations of telephones, TV amplifiers, alerts and more.

Please come along and see what is available. Just drop in no appointment necessary.

Frances Dewhurst
Director, CAMTAD
Cambridge

Oliver the musical at LVC

STUDENTS at Linton Village College are rehearsing for their first full-scale musical production for several years – the popular musical Oliver! by Lionel Bart. Based on the novel by Charles Dickens, the show contains all the favourite songs including *Food Glorious Food*, *Consider Yourself* and *Where is Love?* accompanied by a full orchestra.

Tickets are on sale at LVC reception for performances at 7.30pm on Friday 23rd and Saturday 24th March. It promises to be a fantastic show so book now to avoid disappointment!

Tony Kelly

NRS CARPETS

HOME SELECTION
FREE MEASURING &
ESTIMATING
All types of flooring
available
Tel: 01223 893634
Mobile: 07885 173113

OLIVER!
The Musical by Lionel Bart
Friday 23rd and Saturday 24th March
7.30pm
Who will buy these glorious tickets?

Glorious colour whatever the weather



IN February Barry Gayton, familiar to some from his Sunday gardening slot on BBC Radio Cambridgeshire, joined the gardening club to remind us that, whatever the weather, we can manage to have flowers in the garden, bringing ever welcome splashes of colour all year round. On Christmas morning he counted 48 different types of plant in flower in his garden.

It is impossible to do justice to Barry's wonderful talk and slides here as my six pages of notes simply will not fit in the Linton News! He started out with his first greenhouse as a Christmas present at the age of seven, spending his pocket money on packets of seeds from Woolworths before selling his spare plants back to them by the time he was eight. All he wants now is to live to be 300 so that he can see some of his cacti grown from seed flower for the first time – a patient man!

Suffice it to say that if you can visit his garden during the National Garden Scheme open days over Easter I'm sure it would be well worth the visit. He has developed his garden over the past 31 years from seeds and cuttings and believes in everything coming from the site rather than importing compost etc. The number of specimens he has is daunting, a true plantsman's garden.

Next month Mark Elkin will join us to speak about Organic vs Chemical control: An Integrated Approach. No doubt this will be of great help to many in light of the greatly reduced number of chemicals available today and the increased interest in organic gardening. Mark will speak at 7.30pm on Tuesday 13th March in the village hall. All are most welcome to join us.

The plant sale will be held on Saturday 12th May so please think of potting up any spare plants or extra cuttings you may have or planting seeds to donate to the sale. Thank you!

Kirsten Newble, 892425, lgssecretary@yahoo.co.uk

News from the bell tower

THE New Year has brought a very exciting piece of news. Our youngest ringer, Catherine Richardson, has won the Dorothy L Sayers Award, a national award given in recognition of a young ringer who has made a significant contribution to *The Exercise*. She was nominated by the Eastern District of the Ladies Guild of Change Ringers, a group she rings with regularly along with her many other ringing activities.

Since starting to learn three years ago, she has hardly missed a practice night or Sunday morning service ringing and now gives support to learners at other towers.

Here is a phrase from Catherine's award statement which I think sums up why she enjoys ringing so much: "What I particularly love about bell ringing is its diversity, how there are so many different elements to it that you will never stop learning."

The award takes the form of sponsorship to attend a ringing course and Catherine is hoping to attend a four day residential course at Bradfield, Berkshire in August.

If you are interested in learning to ring, please call me or come along at 7.30pm on any Wednesday evening.

Jackie Latham, 890898

Designer Drapes
Hadstock
Curtain Fabric And Blind sale
20% OFF in march
on selected ranges
New Patchwork & Quilting
Haberdashery
Beginners Quilting days available
for more information tel 01223 890556

GARAGE DOORS
Spares for all makes
Free Estimates, Brochures and Advice
Steel – GRP – Timber
Sectional single or double skin
Roller Doors
A.B.C Garage Door Systems
Telephone: 01223 893798
or mobile 07774 499537

B Haylock
Wood Flooring & Carpentry
Supply and installation
Free quotations
Home viewing of samples
Mob: 07734057520
Tel: 01223 890418

Lightwriting with the Camera club



The year shown in a lightwriting technique

Picture by Simon Flood

LINTON Camera club began 2012 with a lesson on lightwriting at the January meeting. We have covered this subject before but some of the newer members had not experienced this technique and it is quite fun to do. All you need is a camera capable of keeping the shutter open for a while (bulb mode or starry sky), a tripod (or steady hand), a dark place, a small light source and lots of imagination. Unfortunately we could not switch off the outside lights of the Cathodeon Centre but there were walk-in cupboards and dark corners we could use. The results were shown to other members at the meeting in February.

Also in February, we were delighted to welcome local professional photographers Julian and Jason Edwards

again, who were more than happy to help members with the tricky subject of understanding depth of field; knowing which f-number to match with which ISO, when to use a tripod and when to adjust the shutter speed on manual cameras which is something we take for granted with our compact models. This means we can change the mood of a photograph at the press of a button.

The committee met in February and the new programme for the next half year can be viewed on our website at www.lintoncameraclub.org.uk

The next meeting on 5th March will feature Suzette Gibbs with an illustrated talk on Fine Art Photography, and the theme for members' pictures will be Transport.

Tracey Wilson

Men's Monday keep fit club enjoys the new facilities

THE February edition of the Linton News told readers about the completely renewed fitness suite at the sports centre.

The new facilities are a bonus not only for individual members of the sports centre but also for clubs that use the centre's facilities. The improved facilities have certainly given the Men's Monday keep fit club a fillip. We use the fitness suite from about 8pm before moving into the main sports hall for an hour of circuits, general fitness training and basketball, or occasionally a rackets sport like short tennis for a change, finishing at 9.30pm. We

occasionally have input from a fitness instructor.

The club is actively seeking new members. We span a wide age range – we have a long-standing member who is now just into his 70s. Being a member offers the opportunity to enjoy the facilities of the sports centre one evening a week at a very economical cost. With spring around the corner what better time to get started?

If you'd like a free taster session without any obligation, phone John 891952, Bob 891372 or me for more details.

Andrew Gore 891970

A.J. COPELAND & CO.

Chartered Accountants, Linton

Audit, Accountancy, Tax and Consultancy Services for Business and Individuals

Computerised Self Assessment Tax Return Service

For FREE initial consultation phone

01799 506602

Email: ajcopeland@compuserve.com

website: www.ajcopelandca.co.uk



GARAGE DOORS
Spares for all makes
Free Estimates, Brochures and Advice
Steel – GRP – Timber
Sectional single or double skin
Roller Doors
A.B.C Garage Door Systems
Telephone: 01223 893798
or mobile 07774 499537

B Haylock
Wood Flooring & Carpentry
Supply and installation
Free quotations
Home viewing of samples
Mob: 07734057520
Tel: 01223 890418

LINTON VILLAGE MOTORS

Unit 3, Bourne Bridge
Abington
Cambridgeshire
CB21 6AW
Tel: 01223 830550
Fax: 01223 830430
www.lintonvillagemotors.co.uk

Made to Measure
CAPRI BLINDS
* Verticals * Roman * Roller * Pleated
* Venetian * Wooden
CALL NOW FOR
free quotation - free measuring - free fitting
Blackout blinds in a range of colours always available
Tel: 01223 894020
www.capriblinds.co.uk

A & R PLASTERING
All aspects of plastering undertaken:
Plasterboarding
Rendering
No job too small
19 years experience
Free estimates
Linton based: 01223 890228
Mobile: 0774 8627920

Elite Wedding Photography
Formerly Julian's Photography of Linton
Tel: 01223 892056
Professional, affordable, wedding photography.
WWW.ELITE-WEDDING-PHOTOGRAPHY.CO.UK

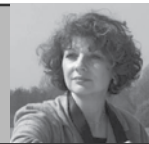
Linton Cabs TAXI

Pre-book only Linton based taxi service
Airports - Train Stations - Local Travel
Tel: 07958 657300 / 01223 890965
Email: lintoncabs@btinternet.com



Linton Country Diary by Darryl Nantais

Illustrated by Maureen Williams



Albert's back ... and keeping an eye on me

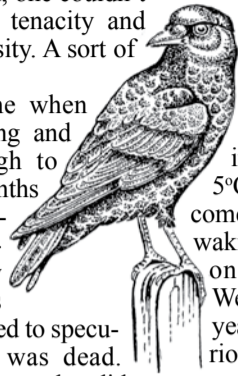
IONCE had a fine friend, whatever friend may mean for you? He meant the world to Julia and me. In the kitchen, he'd steal the utensils, help himself to food, run off with our pens and taunt for a chase.

He'd gargle strange language, caw and peck and meet me unexpectedly on the corner of our street. Some remember him well for comical antics and an ability to drop in on those showing particular kindness to our wildlife.

For those with a corvine empathetic persuasion, he was known as Albert Crow. I admit he could be a bit of a scoundrel,

bounder and cad but given his trials to overcome a physical disability from birth, one couldn't help admire his tenacity and rise above adversity. A sort of loveable rogue.

The day came when Albert was strong and confident enough to leave but as months passed, an ever-increasing concern crept in my petty face for his survival, which led to speculation dear Al' was dead. I never quite lost hope, but did lose count of the times I thought I saw or heard him.



As this winter approached, I muttered, looking up into the tall trees and cold skies "Where are you now Albert?" I'd recall how last winter he would perch, staring at me from a branch 15 metres from our house in temperatures of minus 5°C, stubbornly refusing to come into the warmth, then waking me early by tapping on the roof or window. Well, the snow came this year too and with it some seriously cold weather, which some said would have spelled the end for our dear old crow. And so to inter him with

honour 'le Roi - il est mort.' With a private tear, that was the end of that, except three days ago, Albert returned, wearing a shiny coat and sparkling eyes as well as any crow could. He's at the kitchen door now, strutting with grandeur and panache and in that tree are two of his kind. Hooray for Albert! - or is it Albertine?

Recent studies on corvines indicate their amazing ability to share information about an individual human. A certain experience yesterday convinced me beyond any shadow of doubt these birds really do watch over us.

2012 Bartlow walk for Medicine for the Elderly

ONE third of the money raised on 6th May by the 2012 Bartlow Walk will be donated to the cause of Dementia and Delirium, the central themes of Addenbrooke's Department of Medicine for the Elderly. The medical term is cognitive impairment, a name suggesting deterioration in the mental processes of perception, memory, judgment, and reasoning. In blunt terms, dementia is progressive and incurable whereas delirium can be reversible.

We all get older and few of us are ready for all that means in terms of deteriorating faculties, despite often having had to care for an ageing parent or grandparent. And the reality is that, with increasing life expectancy and an ageing population, inevitably there

will be more people who come to suffer from a dementia. Here is an amazing statistic: it is estimated that, within the next few years, between 250 and 450 of Addenbrooke's total of approximately 1,000 beds will be occupied at any one time by patients with dementia and/or delirium.

Here's the issue: Hospitals have traditionally been designed to care for younger people who are, in another wonderful medical term cognitively intact. There is now a National dementia strategy to shift the focus towards this major patient population, for a hospital that is dementia friendly will also meet the needs of those without dementia. Addenbrooke's is playing a leading role in this, locally and nationally, and winning awards for excellence.

The funds raised from the three Counties Walk will be used to further the work already started to make Addenbrooke's more dementia friendly.

Graham Howat, Walk Organisee

In your own time...



Georgina: much travelled

Picture by Mike Judge

Around the world ...and back to Linton

THIS month, the In Your Own Time article takes a look at the lady who usually wields the pencil as she interviews interesting characters in Linton.

Georgina Page has lived in the High Street in Linton for many years where she and her family settled after years of travelling the world.

Her early years were spent in Sri Lanka, before her parents decided to return home, settling in York via Bradford and Darlington.

After she married, she and her husband Michael lived in Bahrain and then Greece before settling in Cornwall to run a restaurant.

They eventually sold up and started travelling again, with Michael, a water engineer, working in Singapore, Malaysia and Indonesia. During this time, Georgina qualified as a TEFL teacher (teaching English as a foreign language).

When Michael's work in Indonesia ended, Georgina returned to Linton where she now works as a personal secretary to a consultant at Addenbrooke's. In her spare time, she proof-reads for the Linton News and usually writes the In Your Own Time article. She also started up a mah-jong group a few years ago.

Teresa Mallia DAEP
07961486701
teresa.mallia@live.co.uk
Applied Equine Podiatrist
Covering
Cambridgeshire, Essex and Suffolk
The natural approach
to hoof care
www.yourcomfortablehorse.co.uk
Stepping away from Tradition

BED & BREAKFAST
Mrs Monica Clarkson
4 Harefield Rise, Linton
Tel: 01223 892988
Quiet modern bungalow
Families welcome
No Smoking

For All Alterations to LADIES' or GENTLEMEN'S CLOTHING
Ring **HEMLINE**
Tel: 01223 891034

Linton Complementary Health Centre
2b Bartlow Road, Linton

- Acupuncture, Peter White; MSc, MBACc
- Massage, Peter White; MSc, Dip. Massage
- Shiatsu, Cindy Faulkner; BA, MRSS
- Chiropody, Sharon Bennett; M.Inst.Ch.P
- Counselling, Debbie Soar; NNEB, Dip.Couns

Telephone: 01223 891145
Web Site: www.lintonhealth.co.uk

The Crown Inn, Linton presents
A taster evening with a cheese and wine theme.
Saturday 10th March
Refurbishment starts 12th March and we look forward to welcoming back our diners very shortly so watch this space and thank you for your patience

www.crownatinton.co.uk
11, High Street, Linton, Cambs Tel 01223 891759

POT POURRI 84

What are the three digits?

CONSIDER the numbers between 101 and 999 (ie three digits only). I wish to determine an unknown number N which is the same as N's sum of the hundreds digit (h), the tens digit (t) squared and the unit digit (u) cubed.
Eg. If N =htu then N = h + t²+ u³. What is or are the value(s) of N?
Solution to 83 - The side of a room?
Relative to the first room's triangular side L, the tenth's room has 55 times the volume of the first room (from the Fibonacci series) and as the height is the same, equating area the tenth side = 1.4585L
Urania

NEWS IN BRIEF

Coffee morning

THE Linton branch of the NSPCC is holding a coffee morning and Bring and Buy from 10.30am-12noon on Thursday 22nd March at 3 Mill Lane in the village. We hope that lots of people will come to raise money for disadvantaged children in our area. Sadly, some members of our committee have moved away, so we would welcome new and enthusiastic members to join us. If you are interested, please phone me.
Susan Anderson 891623

Lent lunches underway

THE Lent lunches are well under way for Cambridge Blind Mission which helps people worldwide with disabilities.
During March and April, the lunches are: Wednesday, 7th March, with Lorna and Don Mullholland at 1a Hillway; Wednesday, 14th March with Lesley and Andrew Gore at 38 Symonds Lane; Wednesday 21st March with Gill and Lawrence Powell at 7 Harefield Rise; Wednesday 28th March with Judy and Keith Nightingale at 11 Mill Lane; and Wednesday, 4th April in the church pavilion with Cynthia Norris and friends, when we shall have a speaker from CBM to tell us about their work.
Alan Clarkson

British music in Linton

THE talented Skittles Wind Quintet, formed by students from the Royal Academy of Music, includes clarinettist Anna Hashimoto, who is known to Linton audiences. On Saturday 17th March at Linton Parish Church, they will feature works from the British repertoire including music by Holst Arnold and Frank Bridge. They will also play the Quintet No 1 by Jean Francaix and Samuel Barber's Summer Music. Join us at 7.30pm; tickets £10 adults, £2 students, are available on the door or in advance from Sweet Talk News, 77 High Street, tel 893480. For more information, please contact me.
Linda Bird 893600.

Rolf's latest collection

The Darryl Nantais Gallery in Linton High Street is delighted to announce the release of The Signature Collection by Rolf Harris, which is now available to pre-order. This is a stunning collection of 12 new images by Rolf which have been reproduced on both paper and canvas. His work continues to be very popular and much sought after and I am sure these new images will be no exception. The gallery at 59 High Street is open Tuesday to Friday 10am-3pm and Saturday 10am-4pm.
Karl Backhurst, 891289

Nina, Carl and Laura welcome you to

BOYZ 2 MEN BARBER SHOP

Opening Hours:
Monday Closed
Tuesday 9:00am - 6pm
Wednesday 9:00am - 8:30pm
Thursday 9:00am - 6pm
Friday 8:30am - 6pm
Saturday 8:00am - 3pm

Fully air conditioned
LATE EVENING 'TIL 8:30PM
Wednesday

Traditional Hot towel wet shave
call to book an appointment.

Special rates for senior citizens Tuesday - Friday only

113^a High Street, Linton
Tel: 01223 894481

Small Gifts

Watch batteries and straps fitted while you wait.
Jewellery repairs including sizing and polishing.

All repair work carried out on the premises by a professional with 40 years experience.

We stock a selection of:
Silver Jewellery • Photo Frames • Collectables • Toiletries • Greeting Cards • Gift Wrap

Browse our collection of gifts for all occasions
61 HIGH STREET, LINTON, CAMBRIDGE, CB21 4HS
TEL: 01223 894225

AJB FENCING

www.ajbfencing.co.uk

Fencing - Decking - Gates
All Groundworks
Free Quotations
Quality Service

01223 894795
07813 070542
andy@ajbfencing.co.uk

Roses Beauty Salon

WEST WRATTING
Facials, Electrolysis, Waxing, Manicures, Pedicures, Massage, Eyelash Tint, Ear Piercing. Mobile service available
Rene Guinot Agent
Tel Carol
01223 290492
or 07860 810689

ProClean

Your complete cleaning solution

- *Carpet Cleaning
- *Rugs
- *Stain Removal
- *Car Valeting
- *Caravans
- *Motor Homes
- *Upholstery Cleaning
- *Stain Protection
- *Floor Cleaning / Scrubbing / Sealing / Polishing
- *Pressure Washing of Patios Paths & Driveways
- *Domestic Cleaning
- * Top Ups & One Off Cleaning
- *Gutter / Fascia Cleaning
- *Contract Office Cleaning (Flexible Options)

TEL: 890433 Mob: 0777 375 8355
74 Bartlow Rd, Linton, Cambridge, CB21 4LY



The Derbyshire Post



ON Friday 27th January we held the official opening of our new school building. I welcomed our 80 guests and there were speeches from college council reps Luke Evans and Trudi Fisher, and councillor John Powley, chairman of Cambridgeshire county council. Our special guest, Dr David Hemery revealed the plaque, and the councillor handed the key to Jane Bowen, our chair of governors. We then returned to the new common rooms for drinks, canapés and music by the college wind band.

The college first opened in 1937. It was built to school some 250 children and the same number of adult community learners. I am told that one of the first activities the girls were told to do was to make workshop aprons for the boys.

How times have changed. As the college grew in the 50s, 60s and 70s a hotchpotch of buildings was added to the original, which had once been stylish and cutting edge: full of light, space and the latest technology with curved windows and Art Deco tiles. They did

not respect this design, many of them were not permanent structures and by the 1990s were in a very poor state of repair.

The current building project was an excellent way to put the style back into the site. Once more we have curved walls, lots of glass and attractive open spaces. The building looks great from the outside and complements the original. We again have a building that our community can be proud of.

There are many people to thank for what has, in effect, been a labour of love: Cambridgeshire county council for funding the project, the local authority team for honouring the building even after we converted to academy status, Andy Silverthorne and the design team from Mouchel, the construction team at Morgan Sindall, my bursar, Stuart Tinsley who put so much of his personal time and energy into the project and the staff, students and governors at the college who supported the project with patience and enthusiasm and rarely moaned about the noise!

Caroline Derbyshire, Principal

Fun on Sundays

THE Sunday Club at Linton Free Church has now been running for over a year. On every second Sunday of the month, children aged five-11 years come to Linton Free Church on Horn Lane, for a morning of fun and activities – including games, refreshments, a bible story, quizzes, songs and crafts.

We have looked at stories such as Daniel and the Lions, Noah's Ark and Storm at Sea, with crafts to illustrate the stories ranging from scary lion masks to gentle-sounding rainmakers.

We meet at 10.15am and finish at 12noon. All leaders are CRB checked and all children are very welcome. There is no charge for entrance. The next Sunday Club is on Sunday 11th March and will have an Easter theme.

Café church follows on every third Sunday of the month from 10.15am. All are very welcome.

For more details contact Liz 890358 or see www.lintonfreechurch.org.uk Liz Munday

BED & BREAKFAST
SPRINGFIELD HOUSE
 14/16 Horn Lane, Linton
 Regency house near Church. River views from bedrooms & guest lounge.
Tel 01223 891383

Local Ironing Service

 Fast, friendly ironing service tailored to suit your needs.
 Working overtime? Not enough hours in the day? Can't face that stack of ironing?
 Economical hourly rate. Free collection/delivery available.
 Call Carolyn on 01223 891762 or 07961 919374
carolynturner63@yahoo.co.uk

STEVE WEBB
Painter & Decorator
 Over 30 years experience
 CITY & GUILDS CERTIFICATES
 Montford Barn
 Horseheath
 Tel: 01223 893864
 Mobile: 07772991373

An arctic landscape in Norway and in Linton



OUR guest speaker, Barry Kauffman-Wright, with his illustrated talk Landscapes and Wildlife of the Arctic Circle certainly came on a very apt evening with the temperature down to minus seven. Unfortunately many of our members were unable to attend the meeting due to the icy conditions.

Barry and his wife Pat had cruised off the Norwegian coast to the Arctic Circle and, although the ship kept five miles off shore, with his powerful camera lens he captured wonderful scenes of glaciers 80 miles long and a seemingly close up of a male polar bear from over a mile away. He spoke enthusiastically of the gannets dipping and diving in the wake of the ship and how they dislocate their wings every time they dive into the sea, and the amazing flight and migration of the Arctic terns. He had fascinating shots of the Arctic fox, which moults to a pure white during the winter snow and back to a brown mixture in the summer while retaining a white tail. So many pictures of puffins, razorbills, large gulls and the working husky dogs. A very enjoyable evening despite the temperature.

At 7.30pm on 6th March we will be welcoming Geoff Evans who will be speaking to us about the *Life of a Racehorse*. All are welcome.

Cynthia Norris.

LINTON PAVING COMPANY
 YOUR LOCAL LANDSCAPING
 BLOCK PAVING & PATIO
 SPECIALIST.
 PROPERTY MAINTENANCE
 Int/Ext Painting, General Repairs
 FRIENDLY SERVICE.
 FREE QUOTATIONS
 Tel: Andre Jacobs
 01223 890060
 07765 594398

L.B. CABS LINTON
 For all your long and short taxi trips
 Airports
 Weddings a speciality
PHONE LINTON 01223 892986

DACRE LONG
Local Painter and Decorator
 66 Chalklands, Linton
 Professional work to highest standard for over 15 years
 Trade and Private Customers
 Free quotes with written specification
 Phone 01223 893176 or 07837513837
 Discounts for Senior Citizens

KELVIN SCHOOL OF MOTORING

DOE ADI and MIAM Pass Plus
 Instructing for 35 years!
 For bookings 01223 892263
 16 Back Road LINTON
www.kelvinschoolofmotoring.co.uk

The Way We Were
 by Garth Collard

Greenditch Farm

GREENDITCH Farm comprised of land on the side of Rivey Hill and also land running from Chilford Hall to Tower View. Half way between Smiths scrapyard and Chilford Hall is a flint cottage - once two cottages - and two converted barns which made up the farm buildings. There was never a farmhouse.

In the 18th Century all the land was divided into strips one of which was called Greenditch Shot - the origin of the present name. At enclosure in 1840 Greenditch became a separate farm of 168 acres owned by Elizabeth Bird. Two flint and tiled cottages were built soon after that date.

In 1872 the Chalk family, who already rented Chilford and the Rivey farms bought Greenditch for £2,800.

The farm was sold in 1894 to William Richardson who lived at The Shrubbery in Mill Lane. He was the clerk to Linton Rural



Greenditch Farm building in its current sorry state

Picture from Garth's collection

DC and SC RDC. Early in the morning on August 12th 1921 a riderless horse was found wandering on the farm. Richardson, who had ridden out to the farm the previous evening, suffered a heart attack. This was confirmed by the inquest when Dr Palmer said he was being treated for heart problems.

The farm was sold later that year to William Sindall of Cambridge. The sales brochure stated that the cottages had two bedrooms and two living rooms with cellars. The arable land

was used for barley and root crops. Pasture land supported 100 sheep and 24 cattle.

In 1935 Sindall sold the farm to Pembroke College for £600 and thereafter it was let as part of the Barham Estate. The cottages were converted to one dwelling in 1959 and two barns were converted into houses between 2002 and 2006. The cottages are currently derelict.

My sources are Pembroke College archives and I intend in further articles to cover more Linton farms.

An opportunity to get involved in the Olympics locally

AS Olympic fever spreads across the country, numerous events are going on nationally - the *Big Dance Week* in July, the *Gold Challenge* where you can raise money for charity by trying five, 10, 20 or 30 Olympic and Paralympic sports, and *Hopscotch to Victory*, a world record attempt taking place in June. Less strenuous is *All the Bells* which calls on residents to ring any kind of bell they can between 8am and 8.03am on 27th July. Find out more on www.london2012.com or call 0845 2672012.

Sporting events and activities taking place locally will be listed on www.livingsport.co.uk or at *Living Sport* on 01487 841559. Events will also be added to the www.cambridgeshire.net website as they are announced. If you have an event to publicise, it can be added to this website. If you have a disability, find out what activities you can get involved in locally at www.abilityplusgroup.co.uk, by calling the AbilityPLUS Group on 01487 849929 or by contacting the district council.

Large events will be taking place along the Olympic torch route as it passes through Cambridge (as part of the Big Weekend on Parker's Piece) on 7th and 8th July. Route details and times will be announced nearer the time. Local people are encouraged to organise their own celebrations helped by the 2012 Local Leaders initiative. See www.london2012.com/get-involved

involved or phone 0845 2672012. The county council is keen to encourage local events and street parties; find simple guidance to getting a street party road closure on their website or call 507176 to arrange this or to discuss any other events you would like to organise. Cultural events encourage residents to join the race to find local connections to all 206 nations taking part in the Olympics (see www.walktheworld.org.uk). Information on local cultural events will also be available on www.cambridgeshire.net. 70,000 people have registered as Olympic and Paralympic volunteers, and you can sign up to volunteer at local events at www.volunteeringcambsandpboro.org.uk.

PLANNING APPLICATIONS
 S/2202/11 Rosemary Wellings, 96 High Street, Revised louvre design to ease elevation - variation of condition 4 of planning permission ref S/0253/10/F and details required by condition 5 of planning permission S/1593/07/F.
 S/0119/12/FL Mrs Kate France, 26, Emson's Close, Provision of a pitched roof to single storey side annexe.
 S/0201/12/FL Mr & Mrs Prior, 2, The Grove, Single storey side extension.

Now you can learn SPANISH
 with an experienced tutor, at your own pace, in the comfort of your own home.
SUSAN HODGES
 Tel: 01223 891521
 Email: sjhmac2@yahoo.co.uk

KJL Roofing
 All roofing repairs, lead-work, renewal of pitched or flat roofs
 New guttering, repairs/unblocking
 Free estimates before any work commenced
 25 years + Experience
 Tel: 01223 892542
 Mob: 07958 618440

CHRISTOPHER MARKHAM
 HOME & GARDEN SERVICES
 Interior/Exterior Decorating
 Fencing, Guttering
 Turfing, Garden Clearance
 Lawn & Hedge Cutting
 Decking & Patio Cleaning
 Patios & Driveways
 Call on (01223) 892889 or 07973294946
 No job too small...

off to Kumon I go, at maths and English I'm a pro, all my answers are right and my future is so bright!
Maths and English Study Programmes
 Kumon can help your child progress with their maths and English studies, boost their confidence and help them shine.
 Every day Kumon helps children of all ages and abilities to realise their true potential. With over 600 centres nationwide, it's convenient too.
Contact your local Instructor today.
 Mrs Karen Tumber
 Linton Study Centre
 01223 893578
KUMON
 Every child can shine
kumon.co.uk

RDM | accounts
 Friendly and reliable, Linton based Bookkeeper
 Please contact:
 Rebecca McKenzie
 MAAT on..
 tel: 07850 007111 or
 email: rdm.accounts@btinternet.com

G. DYE & SONS
 GENERAL BUILDERS,
 GROUNDWORK & MAINTENANCE,
 CONSERVATORIES & UPVC WINDOWS, KITCHEN & BATHROOM REFITS
 ALSO INTERIOR & EXTERIOR DECORATING
 REFERENCES AVAILABLE
 39 The Grove
 Linton
 Cambridge
 CB21 4UQ
 Tel: 01223 892089
 Mobile: 07961 342887
georgedye738@btinternet.com
 Free Estimates



Parish Council Matters

Snow and ice

Parish Council Matters is written, edited and published by the Parish Council with the support of the Linton News Team.

BEFORE you read this article you must understand that the responsibility to salt roads may vary due to changes in legislation and the length of time the snow and ice stays.

So who is responsible for what?

The highways agency is responsible for motorways which around here include the M11, A14 and A11.

The county council is responsible for major roads and bus routes and this quote is from their web site:

"Which roads do we salt? With 2,700 miles of roads in Cambridgeshire, it would be

unrealistic to attempt to treat all roads. Priority is given to maintaining safe driving conditions on an agreed network of roads, which will normally include all busy roads. The network is agreed in consultation with local parish councils, with priority given to the following:

- Roads that carry the heaviest early morning traffic
- Roads linking centres of population
- B roads and busy roads adjacent to a fen drain
- Roads that link salted routes with those of adjoining counties

• Making sure all road users live within a reasonable distance of a salted road.

Pavements in towns and villages are normally only salted if the icy conditions persist for several days"

The district council does not have any responsibility to salt footpaths or roads although they may do roads that are on their land. I don't know of any undertaken in Linton and if they were I suspect they would be under contract to the county council.

That leaves us with parish council responsibilities, what

do we actually have? None, we do not have to salt anywhere but as always we are here as a parish body. What can we do, quite a lot really but again there are always hurdles to overcome.

The parish council provides the yellow salt bins which are placed at various points in the village. They must be sited on county council land as agreed by the county council and be easily accessible to be filled. A word of caution though this salt is not for pavements, as stated earlier the county council do not salt pavements, "Where requested we will provide villages with a supply of salt for use on local problem spots, ie a hill or on a dangerous bend that suffers badly from ice."

The parish council bought its own spreader some years ago and does salt some pavements which are mainly on school routes and main areas of use. We do not have a full time or emergency worker for this; it is just part of the village custodian's normal duty. We are also very limited on how much salt we can stockpile.

Last year I accompanied the village custodian on a course on footpath gritting, run by the county council which the parish council has signed up to:

"Cambridgeshire's parishes are signed up to our winter gritting volunteer programme. This is where the parish has identified footpaths that they would like gritted in winter, for example, outside a school or a shop. The volunteers are put forward by the parish clerk, trained and insured by highways and provided with a manual pushable spreader. They are then alerted by us to go out gritting"

Alas I have to confess that due to illness I was unable to salt any pavements in the February snowfall.

Information taken from the website <http://www.cambridgeshire.gov.uk/transport/roads/winter/>

Cllr Graham Potter



Colin Tofts, our village custodian, getting to grips with a manual spreader

Pictures by Sue Parry

The diocese plans development

YOU might have seen the item last month, inviting you to attend a consultation on neighbourhood development on a site off Horseheath Road. The landowners, the Diocese of Ely, had suggested developing this area as part of the strategic housing land availability assessment (SHLAA), which I wrote about last year and details of which are on the South Cambridgeshire district council website. The site is outside our 'village envelope' which has previously protected us from expansion. This is not the first time development has been suggested in this area, but previous proposals have been dropped before they got this far.

Linton might need some extra houses, especially social housing, but how many? Of what type? Does Linton have the infrastructure, water, schools, medical and other resources for expansion - or perhaps we prefer to have the land for food production. Do the proposals include jobs and workplaces, or just more commuter housing? Also, there is the minor matter of traffic through the village, and particularly on the A1307 - which is insufficient for current needs, noisy and a real hazard. We look forward to seeing how this might have been addressed.

Up to the time I write this, the parish council has not received a planning application, so we have no details of what is proposed. By the time you read this, we should have been suitably enlightened! Before we make a judgment on a planning application, councillors should determine the opinion of the village. So, we need to hear your views and we encourage you to send your comments, so that a decision can be made that reflects the views and needs of the village.

Cllr Enid Bald

Ivy hangs up her gloves



Ivy Whiting, who had been employed by the parish council as a litter picker for almost 17 years, decided to retire at the end of February. We are very grateful to Ivy for all of her efforts and we wish her well in her retirement.

GEOFF NORBY
 Reg No. 34107
PLUMBING & HEATING ENGINEER - Estd. 1966
 All aspects of Central Heating and Plumbing
 Boiler Service & Maintenance
 Bathroom Suites & Power Showers
 Kitchen Installations - Tap Washers
 Telephone 01223 892311
 Mobile 07885 068047
 geoffnorby@tiscali.co.uk

Discreet Pest Prevention & Control
A J PEST CONTROL
 FAST AND EFFECTIVE
 PROFESSIONAL SERVICES
 COMMERCIAL - DOMESTIC - AGRICULTURAL

Wasps, Hornets & Flies
 Mice and Rats
 Fleas, Bed Bugs and Ants
 Bird Control
 Squirrels and Rabbits
 Cockroaches

Based in Linton
 Contact: 01223 530988 or 07855478824
www.ajpestcontrol.co.uk

Crem RECRUITMENT
Opportunity awaits

We provide a professional and friendly recruitment service to Haverhill and the surrounding villages. If you are looking for short term temporary work or if you are looking for the next step on your career ladder then call us today or email your CV to: jobs@cremrecruitment.co.uk

www.cremrecruitment.co.uk
 Contact Colin 0 or Tom McKenzie
 on: 01440 708833

McKenzie & Haywards Garage
 MOT by appointment while you wait.
 Servicing, Collection & Delivery Service

Units 3/4 Lintech Court
 The Grip Industrial Estate
 Linton, Cambridge, CB21 4XN
 Tel: 01223 894140
 Fax: 01223 890035

Chapel
 Independent Financial Advisers
 SPECIALIST ADVICE ON
 Pensions - Investments - Mortgages - Protection
 Personal Financial Planning
 FREE Initial Consultation & Without Obligation

Ian Cross DipPFS
 01223 892821
 email: Chapelifa@btinternet.com

De-Salis House, 6 Hillway Linton, Cambs, CB21 4JE

A Member Of Sesame Limited Which is Regulated By The Financial Services Authority
 YOUR HOME IS AT RISK IF YOU DO NOT KEEP UP THE PAYMENTS ON A MORTGAGE, OR ANY OTHER LOAN
 SECURED UPON IT. WRITTEN DETAILS ON REQUEST

GARDENER
 N.C.H. QUALIFIED
 All garden maintenance including:

Weeding - Mowing
 Hedge cutting - Turfing
 Garden clearance
 Shed / fence treatment
 Hard/soft landscaping

For a friendly professional service please call:

Darryl Tilling
 01223 892133
 07932 021277

N. CLAXTON
 Painting & Decorating
 and
 Property Maintenance

FREE ESTIMATES

Tel: 01223 893487
 Mobile: 07724073045
 e-mail: n.claxton925@btinternet.com

Councilminutescouncilminutescouncilminutescouncilminutes

ABBREVIATED minutes of the meeting of the parish council held at the Cathodeon Centre on Thursday 19th January 2012.

Present: R Hickford (chairman), D Champion, Dr B Cox, Mrs S Dew, B Manley, D Penfold, G Potter, Mrs J Wilson and Mrs S Parry (clerk). County and district councillor J Batchelor, district councillor Mrs T Bear and Mrs K France (press) were in attendance together with four members of the public. Cllr Walker arrived at 8.10pm.

Apologies for absence: Councillors Bald, Cornell, Hunt, Linsdell and Mannassi.

Chairman's comment: Council was asked to avoid abstaining from making a decision unless more information was required on the subject.

Public participation: Mr D Walker gave an update on the proposed play equipment. Several grant funding sources had been identified and it would be more beneficial to apply for a number of smaller grants rather than being dependant on one larger grant. He asked for volunteers from the council to help him to seek grant funding. The chair thanked him for his efforts.

Matters arising from the minutes of the meeting held on 5th January: Cllr Champion requested that the disability rights group be contacted to ascertain their requirements regarding vehicular access to the sports pavilion. He agreed to investigate this.

The clerk reported that no information on padlocks allowing access to emergency vehicles was available from the fire service or water board. However high security padlocks with a master key had been sourced.

Cllr Potter asked the chair for clarification that the council would be liable if an accident involving a motor vehicle took place on the recreation ground. The chair replied that the council, having been made aware of the problem of unauthorised vehicles driving on the recreation ground, would be liable if they did not act. Cllr Potter also commented that only one complaint had been received, during a recent public forum, so this phrase too was misleading. The chair replied that there had been much debate both verbally and on the village forum. However it was noted that this was unofficial and any comments should be addressed to the council direct.

The clerk reported that South Cambridgeshire district council (SCDC) were willing to waive the £3 per week fee to empty the proposed dog waste bin. Cllr Wilson proposed that the bin be sited in the vicinity of Meadhaven at a cost of £456. The proposal was seconded by Cllr Walker and resolved by the meeting.

Cllr Potter reported that the office photocopier had been replaced as it could not be repaired. No extra costs would be incurred.

Cllr Cox reported that although no application for grant funding for the churchyard had been made the process had been investigated. He reminded council that the 'Monday gang' maintained the churchyard at a considerable saving to the council. The council was responsible for its upkeep, as it was a closed churchyard, but it did not own it. The chair reminded council that all money spent should be proportionate. It was agreed that the clerk seeks clarification as to whether S137 funding could be used.

Cllr Cox reported that the SCDC tree officer had been contacted regarding the churchyard lime trees. She had advised that safety work should be carried out as soon as reasonably possible and therefore Atlas Tree Surgery had been tasked to carry out the work at a total cost of £990+VAT.

Regarding allotment sites the chair reported that, late that day, emails had been received from council's solicitors suggesting that terms for the sale of the land, on the second site, should be discussed - assuming that the land was fit for purpose to avoid any unnecessary costs involved in detailed investigations. It was also advised that it may be possible to resurface the bridleway access to the original site without permission from the owners. However investigations were ongoing.

Report from the county councillor: Cllr Batchelor reported that it was the budget setting season and the government had offered the county council an extra 2.5% of funding if council tax was not raised. However it was likely that it would be increased

by around 3%.

Following the aborted withdrawal of bus subsidies and the closure of the current consultation, 81% were against the withdrawal. A decision would be made at the end of January.

A community transport pilot scheme was to be introduced between Linton, Duxford and Whittlesford Station. However it had been changed to incorporate Sawston and not Linton. The only involvement with Linton would be delivering pupils to the Granta School.

Reports from the district councillors: Cllr Bear reported that solar panels were no longer being installed on the SCDC building.

Age UK would be introducing a shopping service whereby anyone over 60, who did not have access to on-line shopping, could phone through their order to be delivered by one of the major supermarkets.

The chair asked Cllrs Batchelor and Bear to confirm whether they had a vote on the planning committee to determine the Nichols Court lighting application as conflicting information had been received. Both confirmed that they had no vote.

Consideration of co-option to fill councillor vacancy: Mr Paul Poulter addressed the meeting. Cllr Champion proposed that Paul Poulter be co-opted to the council. The proposal was seconded by Cllr Manley and resolved by the council.

Correspondence received for discussion and decision: It was agreed to respond to the county council community transport consultation that council was disappointed that Linton was no longer part of the pilot scheme but were willing to arrange distribution of a questionnaire.

Mr V Harris had requested permission to use the recreation ground for his annual funfair from 23rd to 26th May inclusive. This was agreed.

LINTON PARISH COUNCIL

Linton Village Hall, Coles Lane, Linton, Cambridge CB21 4JS Tel: 891001

Clerk to the council – Mrs Sue Parry
Email: lintonpc@btconnect.com
Website: www.lintoncambridgeshire-pc.gov.uk
Office hours: Monday 9am–12noon and 4–5.30pm, Tuesday–Friday 9am–12noon
Or by appointment
Dates for full council meetings:
1st and 15th March, 19th April 2012
All meetings held at the Cathodeon Centre commencing at 8pm

ABBREVIATED minutes of the meeting of the parish council held at the Cathodeon Centre on Thursday 2nd February 2012.

Present: R Hickford (chairman), Mrs E Bald (vice chair), D Champion, Ms E Cornell, Mrs S Dew, Ms T Hunt, B Manley, Ms M Mannassi, D Penfold, G Potter, P Poulter, Mrs A Walker, Mrs J Wilson and Mrs S Parry (clerk). Mrs K France (press) was in attendance together with two members of the public.

Apologies for absence: Councillor Cox.

Welcome: Mr Paul Poulter was welcomed to the council and he signed his declaration of acceptance of office form.

Disclosure of interest: Under the Nichols Court item Cllr Dew declared a personal interest as a neighbour. Under the allotments item Cllr Walker declared a personal interest as an employee of Camgrain of which Mr C Fairey is a director.

Chairman's comment: The chair confirmed that John Linsdell had resigned from the council. Mr Linsdell was thanked for his many years of service. Cllr Cornell was welcomed back after her period of ill health.

Matters arising from the minutes of the meeting held on 19th January: The chair reported that any decision regarding

the change of padlock to the recreation ground gate would be deferred until the next meeting on 16th February. Cllr Champion was still investigating the access issue for the pavilion with respect to disability.

The clerk reported that the dog waste bin had been installed in the vicinity of the junior school.

Cllr Bald reported that a meeting of the churchyard committee would be arranged to discuss a rolling programme of maintenance.

Reports from co-ordinators: Recreation ground: Cllr Dew reported that the caretaker at the village college would be closing the gates at 5.30pm at the weekends. Cllr Manley reported that it had been a long standing agreement that the gates would be left open until approximately 9pm. It was agreed that Cllrs Penfold, Manley and Potter would liaise with the village college.

Cemetery: Cllr Bald reported that Mr Faunch from the county council would be inspecting the roadway to give advice on how the surface could be improved.

Venture playground: Cllr Penfold was undertaking the weekly play equipment inspections.

Leadwell Meadows, river and wildlife: Cllr Mannassi reported that a tree had fallen across the river. Cllrs Bald and Mannassi would investigate and report back.

A1307, traffic and recreation ground parking: Cllr Cornell confirmed that a meeting of the A1307 steering group had taken place. It had been agreed that the group remit would be widened to include casualty reduction along with the growth and expansion of the Haverhill area. The chair added that senior personnel from the county council would also be invited to participate, so cross-county border liaising could take place.

Allotments: Cllr Champion confirmed that he had contacted Karen Kenny of the National Society of Allotment and Leisure Gardeners to arrange for her to visit.

The draft letter to prospective allotment holders was considered. It was felt that the letter was too negative and changes were made. However Cllr Cornell and the clerk felt that it was important to explain why the council was requesting another form to be completed.

Consideration of draft precept: The chair thanked Cllr Potter and the clerk for their preliminary work on the calculation of the precept. The finance committee had recommended that no increase be made. Cllr Cornell proposed that the draft precept of £145,604 (the same as 2011/12) be accepted. The proposal was seconded by Cllr Champion and resolved by the meeting.

Written reports from council representatives: A report by Steve Hampson, South Cambridgeshire district council (SCDC), and comments by Chris Cole, Sanctuary, on the meeting at Nichols Court had been received. Mr Cole had reported that he had reviewed the situation in regard to planting along the south west facing boundary. Unfortunately, it was a legal issue, not a technical issue that was preventing planting along this boundary. EDF, who owned the power cable, had a legal easement over the ground. This easement provided for a clear access strip over the run of the cable and prevented Sanctuary from planting over it. However Sanctuary were still prepared to provide suitable screening at the ends of the adjoining gardens should any of the neighbours wish to take up this offer.

Cllr Bald reported that she was drafting a letter of concern. She advised that the proposed lights were no longer available and it was agreed to allow Sanctuary to vary the specification to avoid any further delay.

Cllr Hunt had issued a report on the village hall trustees meeting. There would be no increase in hire charges for the next year. A fund raising Spring Fair and coffee morning would be held on Saturday 21st April.

Correspondence received for discussion and decision: Letters of apology had been received from two of the skateramp arsonists. It was agreed that council would contact them in due course.

Note: Copies of the full minutes, reports and documents referred to above can be inspected at the parish council office.

TIM PHILLIPS & Co.
Accountants
Established 1991

Independent, specialist service for:
Small Business • Self Assessment
Personal Taxation

Free initial consultation – no obligation
EASY, FREE PARKING

Copley Hill Business Park, Cambridge Rd., Babraham
Off A1307 between Wandlebury and Babraham
Tel: 01223 830044. www.tpaccounts.co.uk

"Our boards speak for themselves"

RUSSELLS
Ecellence through Experience
russellres.co.uk

SOLD

RUSSELLS
Ecellence through Experience
russellres.co.uk

LET

01223 837473 russellres.co.uk Woolpack House, 70 High Street, Sawston, Cambridge, CB22 3HJ. sales@russellres.co.uk lettings@russellres.co.uk

Offices also in Cambridge, Ely & Littleport

FREE COMPETITIVE ESTIMATES

Watkins Joinery

• FITTED KITCHENS / BEDROOMS / WARDROBES
• CABINET MAKERS
• BESPOKE JOINERY
• DOORS / WINDOWS / STAIRS
• WOODEN FLOORING
• CONSERVATORIES
• EXTENSIONS / REFURBISHMENTS

20 YEARS' EXPERIENCE
INSURANCE WORK
UNDERTAKEN

Tel: 01223 890600 Mobile: 07802 885390
colin.watkins@keme.co.uk

MALLYON & DONALDSON
Linton

Specialising in both Modern and Traditional building methods.

Tel: 01223 891267
Mob: 07941 220868

All contracts finished to a high standard.
Reliable service. Local references available.

STEVE JACKSON LTD

All aspects of property maintenance

Aerial upgrades & installations

Reliable & local service

Linton 01223 893896
Mobile 07963 854 653

stevejacksonltd@hotmail.co.uk

GLENWOOD BOLTS & SCREWS LTD
www.glenwoodbolts.co.uk

SUPPLIERS OF QUALITY FASTENERS, FIXINGS & SILVERLINE TOOLS

Unit 2 Lintech Court
The Grip Industrial Estate, Linton
Cambridge, CB21 4XN
Tel: 01223 892095 / 893931
Fax: 01223 894122

Westlakes

Painting & decorating exterior and interior

Les Westlake
Mobile: 07929 501101
Tel: 01223 892866

Clive Westlake
Mobile: 07900492127