

Friends of LVC  
table top sales on  
3<sup>rd</sup> October and  
7<sup>th</sup> November at  
LVC see page 5

Established 1987

Over 2,350 copies  
distributed  
free in Linton,  
Hildersham,  
Hadstock &  
Bartlow

# THE LINTON NEWS

www.linton.info e-mail lneditor@linton.info

October  
2015  
Vol. 29 N° 7  
Publication date  
Monday 5<sup>th</sup> October

E & E PLUMRIDGE  
Design & Print  
41 High Street  
Linton  
01223 891407

## Linton's fast response to the refugee crisis

MANY of us have been watching the news coverage of the refugee crisis with increasing concern and wondering what we can do help.

In response to this, a Refugee Aid Support Group has formed at St Mary's church to consider the possible ways that we, as individuals and as a community, might be able to help.

As an immediate response, the group has decided to organise a Linton-wide collection for Save the Children's Child Refugee Crisis Appeal. This is for supporting children and families along the refugee route, as well as in the countries they are fleeing, by providing food, water, shelter and much needed medical supplies.

Collection boxes will be placed in all four Linton schools, the two playgroups, the Post Office, Sweet Talk News, Spotted Giraffe, the Linton Kitchen and Beaumont's Butchers for one week from Monday 5<sup>th</sup> October.

The money will then be given to this specific appeal and Save the Children will confirm how much we have raised.

Please look out for the collection boxes during this week.

In addition, the group is looking to support

a range of other charities, with different members planning to support Barnabas Aid, which has a particular concern for the extremely vulnerable Christian communities of the Middle East, promote petitions, lobby our MP, liaise with the group supporting and visiting detainees at Yarlswood, liaise with the local authority regarding refugee settling and to raise funds for the Mothers' Union in Baghdad, among other ideas.

If you are interested in getting involved with any of these projects, please consult the noticeboards just inside the door of St Mary's for details of contacts.

We would like to say a big thank you to the schools and businesses supporting us to raise money for the appeal and we will report how much Linton raises in a future edition of the Linton News.

More information on this appeal can be found at:

www.savethechildren.org.uk/about-us/emergencies/child-refugee-crisis-appeal.

Yasmin Hancock, 892068

Hannah Foote, 891687

## A change and a well earned rest

AFTER 20 years of service to Linton Helping Hands including the last eight years as Transport Coordinator, Bruce Conochie will hand over this role to Michael Page on 1<sup>st</sup> November this year.

It is impossible to calculate the number of phone calls Bruce has received and made in order to marry up people needing transport with available drivers.

No request for help to hospitals, health centres, dentists and shops has ever been turned down. The service has become essential to many of Linton's older and less mobile residents. We are indebted to Bruce for his many years of service to the community.

At a recent social gathering of the volunteer drivers, Don Mulholland, Chairman of the

group, presented Bruce with a token of thanks from the drivers for his many years of support.

Bruce has offered to stand in as relief coordinator when required and until such time as a volunteer steps forward to fill this space, so we will not be losing his services completely.

When Bruce first announced that he would like to be relieved of the coordinator's job, the Helping Hands committee looked far and wide for someone willing to replace him, and there was a possibility that the service would have to cease as no one had come forward.

Michael Page, a former volunteer driver has been working in Turkey for the last two years and, returning home at the end of his contract, heard of our predicament and immediately volunteered to take over from



Bruce receiving his  
gift from Don

Picture supplied by Cynthia Paton

Bruce. His offer was accepted with much relief and grateful thanks.

All those who use the transport service will be advised that with effect from 1<sup>st</sup> November Michael Page will take over as Transport Coordinator, and the phone number to call will be 891635 for existing and new clients.

Cynthia Paton, Secretary

## Music and fun for all

THIS year's Linton fireworks' display will take place on Saturday 7<sup>th</sup> November on the field behind Linton Infant School.

We are delighted to announce that local band The Accelerants will entertain the crowd with a mixture of rock and pop classics before the display – featuring lead vocals by Linton Heights teacher Jamie Wilson.

We will open the gates at 5.45pm this year so come early to enjoy the show and the usual food and drink stalls. Glo-toys will be on sale for children.

We will light the bonfire at 6pm and The Accelerants will start their set at 6.15pm. The main firework display will start shortly after 7pm.

All profits from the event will be split between the PTA's of Linton Infant School, Linton Heights Junior School, and Linton Village College.

We are very grateful to Camgrain and several other local companies for sponsoring this event.



A firework burst in 2011

Photo by John Buckingham

Advance tickets are priced at £10 for a family of five (two adults and three children) and £4 for an individual. They can be bought at all three Linton schools, the village newsagents and post office.

Tickets are also available online at <http://www.linton-fireworks.co.uk>. Tickets on the night will be available at the gate for £12 for a family and £5 for an individual.

Andrew Clark,  
0771 3160306 or  
[info@lintonfireworks.co.uk](mailto:info@lintonfireworks.co.uk)  
[www.lintonfireworks.co.uk](http://www.lintonfireworks.co.uk)

## Our butcher takes a wife

ABOUT a year ago when the Ashcrofts, the short term occupants of the butcher's shop at 37 High Street, decided to give up, they offered the business to Beaumonts, butchers in Fulbourn where they had previously been customers.

Michael Beaumont thought it a good opportunity to expand locally and his son, 42-year-old James took over the Linton shop with Nick Dolan.

James, who learnt the trade and worked with his father for 15 years, said they had known about shopping in Linton through two previous employees – who both knew the Linton trade – Michael Prentice who also worked at the Fulbourn shop for a time and Ron Jacobs, who was employed there part-time and used to run the butcher's shop in Linton.

James says he is enjoying working here. He said: "Nick and I were pleasantly surprised by the variety of



All smiles: James  
and Ioana

Picture supplied by James

shops in the village. There is a lot on offer for local people and we are steadily building up a regular trade."

Many folk are pleased to have a butchery in Linton again. Perhaps they would also like to take the opportunity to congratulate James on his marriage on 5<sup>th</sup> September to Ioana, a native of Transylvania.

Kate France, 891602

## "Linton Quacks" on the water



Health Centre staff in duck costumes in their Dragon boat at Fen Ditton

Photo supplied by Julie Readman

Staff of Linton Health Centre took part in the Dragon Boat race on 12<sup>th</sup> September to raise funds for Addenbrooke's Charitable Trust. Other HC news including 'flu clinics can be found on page 3.

## Help save the Hadstock pub

LAST year the residents of Hadstock formed a group called Friends of the Kings Head, their intention to purchase the freehold of the Kings Head Public House.

So far the group have protected the pub as a community asset; made an offer that was accepted for the purchase of the bricks and mortar of the PH and created a Community Benefit Society called the Hadstock Community Pub Limited. Various grants have also been applied for.

It is hoped that the promised pledges, amounting to £115,000 to date, will become

reality. Once sufficient funds are in the bank account together with any grants received, the committee intend to proceed with the purchase of the PH.

We have now issued our share offer with a view to raising more than £100k for the purchase. A minimum share of £50 and a maximum of £20,000 can be invested. Please note that Investors will have one vote regardless of the amount invested.

The group now invite new parties and those who already wish to invest, to apply for shares and complete the application form which can be down-

loaded together with a copy of the Prospectus from the Friends of the Kings Head website, [www.kingsheadfriends.co.uk/prospectus.html](http://www.kingsheadfriends.co.uk/prospectus.html). Or contact Stella Parker, the group's secretary on 07967 486236 or Derek Bushell on 07971 413355 for a hard copy and information. A hard copy is also available from the Kings Head PH.

The closing date for share applications is now the 15<sup>th</sup> October 2015.

Thank you for all your continued support in securing and safeguarding the future of the Kings Head PH.

Karen Delamain

## All present and correct in the planning world

I REPORTED in the last issue that Linton Parish Council had received plans for : S/1963/15/OL for residential development for up to 78 dwellings with access from Bartlow Road, Land to north and south of and immediate, Linton and S/1969/15/OL which is an application for outline planning for up to 50 houses and 30 allotments on Horseheath

Road. Comments on the applications had to be in by 15<sup>th</sup> September.

The Parish Council held a Planning Committee meeting on 10<sup>th</sup> September and it rejected all the large outline planning applications. This decision was ratified at the full Council meeting on Thursday 17<sup>th</sup> September.

These two applications will now go to South Cambridgeshire District Council (SCDC) for their decision.

Error in addresses:

Last month I gave contact details for sending comments on planning applications to SCDC; those for online comments were correct. Unfortunately the postal addresses and email addresses given on the SCDC website

were wrong and I published these.

However I have organised that any that go astray as a result of the wrong addresses will be forwarded to the correct address.

For future reference the correct postal instructions are:-

Planning and New Communities, South Cambridgeshire District Council, South Cambridgeshire Hall, Cambourne Business Park, Cambourne, Cambridge, CB23 6EA.

The correct email address is [planning@scambs.gov.uk](mailto:planning@scambs.gov.uk)

The online instructions were correct and accessed via the website [www.scambs.gov.uk](http://www.scambs.gov.uk)

Editor

## Too good for jumble...

NEW items this month are a black glass TV unit in excellent condition 80cm long x 45cm wide x 53cm high with two shelves and a brand new large flat panel wall mount with tilt for plasma and LCD screens size between 37in and 61in.

Items still on offer are the de Breville kitchen juicer; the set of golf clubs with a bag and balls; the TP trampoline; the wooden picnic table with seats; the 19in ACE flat screen computer monitor with mains and computer connecting lead; the materials and printer cartridges for 88XL HP Office Jet Pro series; a multipack for Epson TO487 Epson stylus photo printers and a pocket snooker table.

To buy any of the above or to offer an item to benefit a charity, please contact Kate France on 891602 or email [kfrance@profsoundconsult.com](mailto:kfrance@profsoundconsult.com) NB: The donor chooses the charity to receive the money.

Please could the person who called about bike repairs listed in the July edition, whose phone number is something like 892763 (or 893762), call again as I have not been able to return your call.





## New look for the Heights

GREAT changes have taken place at the Heights over the summer holiday. Of course, the staff are looking older and new pupils have started but there have been amazing changes to our classrooms and corridors.

To start with, there is now a cooking area where previously there had been an empty space. It looks great and the cookery club has started there every Tuesday afternoon.

Each class has now got some really smart kitchen cabinets and their own individual art or learning intervention areas. They all look a lot tidier, especially with the dark coloured floor tiles which work well against the white wall tiles. It is lovely to have extra learn-

ing space now in each of the classrooms.

Another big difference is in the mobile classroom. New offices have been made for Mrs Webb and Mrs Sloman. Now they can get on with work in peace, without being interrupted by us. There are also quiet spaces for when teachers or teaching assistants need to do some work with individuals or small groups of pupils.

The spare class room, Room nine, has been made into Mrs Faircloth's new classroom and it looks brilliant.

The school is really looking good and we now have a lot more learning space.

Co-written by our Year 6 pupils

## Linton Granta Playgroup

THIS half-term we have welcomed back some old faces and met new children and their families who have now settled in to the swing of things.

We have enjoyed an energetic visit from our regular dance teacher, Natalie from Made2Move, where the children were able to learn dances to music, developing both their listening and physical skills. We have also learnt about hibernation and looked at where animals live. We are already planning our entry into the Guy Fawkes competition at Linton fireworks and are looking forward to going on an adventure walk to look for signs of animal life in our local surroundings.

We are lucky to have our garden area but rely heavily on volunteers to develop our spaces. If you are a keen gardener and have a spare hour or two, we would welcome your assistance and will provide endless cups of tea and cake. Please contact us on 07806 744864.

Our AGM will be held at 6.30pm on 12<sup>th</sup> October in the Newton block at LVC. As a committee-led setting, we always welcome new members so please come along if you would like to help with an Outstanding Playgroup. We currently have spaces available so if you are interested in enrolling your child, please give us a call to arrange a visit. We are open mornings from 9am to 12noon and afternoons from 12.30-2.30pm except Tuesday. For more information ring us on 07806 744864, or email office@lintongrantaplaygroup.

Karen Thompson, Playgroup Leader,  
Janine Polley, Deputy Leader,

## More fun for the dads



Setting off from the Dog and Duck

Picture supplied by Ian Webb

ON Saturday 16<sup>th</sup> May, the self-styled Dangerous Dads of Linton set pedal for their seventh annual charity bike ride.

Over the years we've raised funds for various Linton-based school and playgroup charities. We've provided money for the Granta and Chestnuts playgroups, helped fund new equipment at the playground and contributed towards the building and subsequent stocking of the school library at Linton Heights Junior School. It is our annual excuse to have a day out riding our bikes, maybe have a beer or three and, most importantly, do some good for our community.

This year, we rode a circa 40 mile, mostly off-road route around South Cambridgeshire and North Essex. As you'll see in our picture, some of our number do differ from the norm and having undertaken the event in previous years on an off-road unicycle and Brompton folding bike, this year Dapa Hughes rode on his recumbent bike. This ensures we maintain our Dangerous tag.

I'm pleased to confirm that we raised £1,112.50, which we've donated to Linton Heights for the refurbishment of their swimming pool area. This brings the total we've raised these last seven years to over £12,500. Not bad for a bunch of middle-aged-men-in-lycra.

Come wind, rain or snow we gather at 8pm every Thursday outside the Dog and Duck for our weekly ride out. If you fancy joining us one evening, please come along.

Ian Webb, Linton Dangerous Dads, 07891129899  
ian.webb72@gmail.com

## Cottages and their gardens



ANDREW Sankey, formerly chairman for 15 years of the Lincolnshire branch of The English Cottage Society, gave a fascinating and amusing talk, accompanied by his charming sketches of cottages over the centuries, starting with the Saxons who were the first farmers. Their dwellings had two wind holes instead of chimneys, hence the word *windows*, and were enclosed by a wattle fence, leading to the expression *beyond the pale*, meaning outside the fence. Vegetables, herbs and wild flowers were grown, the latter used to sweeten the flooring and deter vermin, while herbs were used for medicines. Interestingly, the first orange carrot came from the Netherlands in 1538 and was named after William of Orange.

Hollyhocks were not native to England but brought back from the Holy Land in the Crusades as the leaves were good for wounds. Thus, holy became holly and hock means mallow. Cottages were romanticised in Victorian paintings, becoming known as *chocolate box*, not showing the harsh reality of the poverty often existing.

In August, to mark the WI Centenary, a tea party was held in one of our members' gardens. The ladies were asked to come wearing green (the WI colour) and / or a hat. Phyllis and Nnette deserve special praise for their creatively decorated hats. Sandwiches and cakes were provided by members and a good time was had by all.

Our next meeting is a Harvest Supper on 6<sup>th</sup> October. This is for members only.

On 3<sup>rd</sup> November, our speaker will be Anne Datson on The Story of Gilbert and Sullivan. Visitors are welcome.

Sally Proberts

## New faces welcomed



We were delighted to welcome 51 new children to our Foundation Stage in early September, who all appear to have settled into school life.

We also welcomed Miss Suzanne Baber, Miss Stephanie Booth and Mrs Alice Armstrong onto our team. Suzanne and Stephanie are teaching our Year 1 classes and Alice a Year 2 class.

Our theme this term is *Towers, Tunnels and Turrets*, which was introduced to the children when we visited Hedingham Castle. This was a whole school trip with the kitchen staff, caretaker, office staff and midday supervisors all joining us. More on how the trip went next month.

Although we have only just got into this academic year, the admissions window will soon open for children due to start school in September 2016. If you are thinking Linton Infants is the school for your child, we are holding an open day on Tuesday 24<sup>th</sup> November and the sessions will be 9.45-10.45am, 11am-12noon and 1.30-2.30pm. The places on each session are limited so please phone the school office on 891421 to book a place.

Louise Clark, Headteacher

## Crafty record breakers

CHILDREN spent a morning making bunting, paper dolls and origami at Linton Library during the summer holidays, helped by Rosemary from Cambourne Library.

Crafts were based on the Summer Reading Challenge theme of the Guinness World Book of Records. The longest line of bunting is recorded as 17,600 metres, the longest chain of paper dolls as 7,718 metres and the largest origami bird (crane) wingspan as 81.94 metres.

No records were broken at Linton but an enjoyable time was had by all.

Liz Cox 893535, elizcox44@hotmail.com  
or elizabeth.cox@cambridgeshire.gov.uk



Pictured 1 to r:  
Rosemary,  
Grace,  
William and  
Dev

Picture by  
Liz Cox

## Benefit from the joint purchase of heating oil scheme

IF you rely on oil to heat your home, community building, church or business premises, you might like to consider joining the Cambridgeshire ACRE (Action for Communities in Rural England) community oil buying scheme.

Through our partnership with AF Affinity Limited, a subsidiary of Anglia Farmers Limited, our scheme makes the most of collective purchasing power. The larger the order we place, the more likely it is that heating oil suppliers will offer a reduced price.

The annual membership fee for domestic users is £20 and that covers as many orders as you need during the course of a year. We find that members need to order around 1000-1500 litres a year to achieve sufficient savings to justify the membership fee. We offer an easy online ordering system and send out email reminders each month, so you'll never forget to order oil again.

To find out more about the scheme, please visit <http://www.cambsacre.org.uk/community-oil-buying-scheme.php> or call me on 01353 865029.

Alison Brown

**Private Tuition**  
Chemistry GCSE, AS and A2  
Biology GCSE and AS  
Science KS2 and KS3  
  
Ceri L Thomas  
BSc (HONS), M.Sc, PGCE (credit), DBS  
  
01223 892480 @ cerilthomas@btinternet.com

**BodyBliss Therapies**  
Energy Healing, Stretch n' Relax  
Relaxation and Meditation  
Indian Head Massage  
Yoga and Mindfulness  
for Children & Teens  
Sue Anderson, Wellness Coach  
07824382378  
[www.bodyblisstherapies.webs.com](http://www.bodyblisstherapies.webs.com)  
Find us on Facebook

**Emotional wellbeing issues?**  
Effective, fast and practical help...  
**feel better today**  
  
Reni Landor  
Human Givens  
Psychotherapist  
  
HGI  
REGISTERED MEMBER  
  
01223 891331  
07961 969250  
email: reni2@btopenworld.com  
[www.lintonhghtherapy.co.uk](http://www.lintonhghtherapy.co.uk)

**Holiday Camps!**  
Working in partnership with...  
KJH CHECKER Premier Performing Arts Premier Sport  
  
Linton Leisure Centre  
01223 890248  
  
October 2015...  
Special Offers  
Book & Pay by 30th September 2015...  
  
COSTS  
£15.00 Per Day  
£50.00 Per Week  
£9.99 Per Day  
£40.00 Per Week  
From £1.15 per hour...  
  
\*\*FREE Breakfast Club 08.00 - 09.00\*\*  
\*\*£1 extra per day for Late Pick Up: 16.00 - 17.30\*\*  
\*\*Childcare Vouchers Accepted\*\*  
LINTON LEISURE CENTRE

**LINTON PAVING COMPANY**  
YOUR LOCAL LANDSCAPING  
BLOCK PAVING & PATIO  
SPECIALIST.  
PROPERTY MAINTENANCE  
Int/Ext Painting, General Repairs  
FRIENDLY SERVICE.  
FREE QUOTATIONS  
Tel: Andre Jacobs  
  
01223 890060  
07765 594398

**Barn Owl Accommodation**  
  
Three private self-contained annexes all in Linton  
  
[www.barnowlaccommodation.co.uk](http://www.barnowlaccommodation.co.uk)  
Call Michelle on 07584 430051

**PH PLUMBING LTD**  
ALL PLUMBING, HEATING & INSTALLATIONS UNDERTAKEN  
Unvented Hot Water Systems  
  
Paul Hulbert  
07960 059 209  
  
Office: 01223 956 262  
  
Cambridge House,  
19 High Street  
Linton,  
CB21 4HS  
email: pkhulbert@hotmail.co.uk  
safe  
515080

**L.B. CABS LINTON**  
  
For all your travel needs  
Call Lionel  
  
Tel: 01223 892986  
Mob: 0771 2420675

**Discreet Pest Prevention & Control**  
A J PEST CONTROL  
FAST AND EFFECTIVE  
PROFESSIONAL SERVICES  
COMMERCIAL - DOMESTIC - AGRICULTURAL  
  
National Pest Technicians Association  
  
Wasps, Hornets & Flies  
Mice and Rats  
Fleas, Bed Bugs and Ants  
Bird Control  
Squirrels and Rabbits  
Cockroaches  
  
Based in Linton  
Contact: 01223 914004 or 07855478824  
[www.ajpestcontrol.co.uk](http://www.ajpestcontrol.co.uk)



# Health Centre News

WE have a busy month ahead with our four Saturday flu clinics in October. We have 2,600 flu jabs to give to adults, nasal spray vaccine to give to children aged two, three and four, shingles vaccine for those aged 70-72 and 78-79, and the one-off pneumococcal vaccine for those aged 65 and over.

Work has been going on behind the scenes towards our merger with Sawston Practice next year. We asked the staff on both sites to suggest a the name for the new partnership. The winner was Granta Medical Practices – thank you to Judith Davey at Linton and Barbara Carroll at Sawston who both came up with that suggestion – both to receive a bottle of bubbly.

Dr Wheeler and Partners  
www.linton.gpsurgery.net

## A picture perfect garden

BETH Chatto has been an inspiration for generations of gardeners, including Wendy Foster and Ron Pitkin who travelled to her incredible garden over the summer to bring us back a flavour of its riches. Their presentation to the gardening club this month was a feast for the eyes.

In 1960 Beth Chatto took an unpromising piece of wasteland, rejected by farmers as useless, capable only of growing plentiful blackthorn, willow and brambles and began to transform it into the spectacle it is today. She studiously selected plants that suited its challenging situations and learnt a vast amount along the way. Beth wrote several books on problem areas in gardens such as dry shade. A mail order business and nursery followed. Now aged 92, Beth still lives at and works in the garden.

Ron and Wendy managed to capture the breadth of plant varieties found in the garden and how they were used within the overall landscape. Thirty different colours of day lilies alone show what a challenge they had to give us a feel for it in one evening. Thank you both.

On 13<sup>th</sup> October, after the AGM business, show judge Norma Alderson will describe *How one thing leads to another*. The meeting starts at 7.30pm in the village hall. We look forward to welcoming you to a wonderful new season

Kirsten Newble,892425

## Historical society meets again

WE look forward to welcoming old friends and new to our first meeting this season at 7.30pm on Tuesday 20<sup>th</sup> October at the village hall, Coles Lane.

Following a short AGM, there will be a talk by the well known Hertfordshire speaker, Richard Thomas, on the Gunpowder Plot. He will describe the background to the events of early November 1605 and the involvement and eventual fate of the conspirators.

There will also be refreshments – wine and soft drinks, and a few nibbles.

Pat Faircloth 893928 pat@owlplace.org.uk, Progr. Sec.



- Boiler Installation, Service & Repair
- Gas Fires, Cookers & Hobs
- Landlord Safety Certificates
- Quality Kitchens & Bathrooms
- General Plumbing
- 24hr Emergency Callout

01223 897236    07931 685774    www.abramsheating.co.uk

Students  
20% off

**THE  
ROOM**

Special Kids  
Prices



37 Bartlow Road, Linton  
Tel: Pippa (01223) 890890

OPENING TIMES

Mon	Closed	Senior Citizens
Tues	9-5 pm	Tuesday & Wednesday
Wed	9-7 pm	Late opening until 7 pm on
Thurs	9-7 pm	Wednesday & Thursday
Fri	9-5 pm	
Sat	9-3 pm	



*the flower boutique*

Treat yourself, your friends and family  
to the  *freshest seasonal flowers.*  
Bespoke design service for weddings  
and funerals.

41 high street . Linton . 01223 891740  
*www.theflowerboutique.co.uk*

## PLODDING ALONG

### An update on police matters

ON the night of Friday 28<sup>th</sup> and Saturday 29<sup>th</sup> August a vehicle was entered in Emson’s Close. Several items were moved around but it appears nothing was taken.

There was an attempted break in at Tower View sometime between 9<sup>th</sup> and 12<sup>th</sup> September. The offender has attempted to force the lock/handle of an up and over door of a brick built garage.

Another car has been stolen from the car park at Whittlesford train station. A Ford Galaxy less than five years old was taken sometime during the working day. This is a very disturbing pattern, and, to be perfectly honest with you, we do not currently know who is doing this and by what method. No glass was found at the scene suggesting that the offender(s) possibly have hi tech equipment. We are drawing on our known intelligence and patrolling the area. If you see any suspicious activity in this area please call us immediately on 999.

It should also be noted that between 8pm and 10pm on Wednesday 2<sup>nd</sup> September power tools were taken from a vehicle in Mill Lane, Whittlesford.

PCSO Chris Wiseman, Sawston police station

## Granta Grapevine AGM

GRANTA Grapevine, Linton’s talking newspaper, will hold its AGM on Thursday 22<sup>nd</sup> October at Chalklands Community Centre. Doors will open at 7pm and the meeting will start at 7.30pm. Everyone is very welcome and refreshments will be provided.

Granta Grapevine provides a spoken version of the Linton News and an audio magazine every month for those who are visually impaired or have difficulty reading the text for any reason. If you know anyone who might like a copy of the recording either on USB memory stick (for which a player is available from us) or on cassette, please call Roger Lapwood on 971797.

If any of our listeners require assistance with transport to the meeting, or you would like to help us and require further information, please call me on 893619 or see our website www.grantagrapevine.org.uk

Mike Crofts

## Children’s Centre changes

LINTON Children’s Centre is based at the Cathodeon Centre, next to the library and we have just prepared a *What’s On* programme for the under fives in our area.

Our Linton baby group, *New Beginnings*, now has baby sensory focus each week. It runs every Thursday afternoon from 1.15pm-2.45pm and is for expectant mums or those with babies under one.

Our NCT (National Childbirth Trust) adviser, Hannah, also pops in to the group monthly to offer advice on breastfeeding, so please check the *What’s On* for visit dates, and for details of our new fortnightly Saturday morning breastfeeding clinic.

Our *Stay and Play* sessions continue every Friday morning, for those under five and we’ll be holding our regular parent information classes and courses, such as basic first aid, baby massage, speech and language drop-in and even an introduction to baby signing. Friday *Fun for Under 25s* runs monthly for any parent or carer under the age of 25 – no need to book.

We are also launching monthly family cookery sessions for children aged over three, based on cooking healthy, cheap versions of family favourites. Finally, we are starting up group birthday parties for all children turning two.

Our Linton programme is growing and you can also access groups and courses at our Sawston Children’s Centre too. To register your child, or for more information pop in or contact us. Our office opening hours are:

Linton Children’s Centre 893594, Wed/Fri 9.30-12.30  
Sawston Children’s Centre 706373, Mon/Tues/Thurs 9.30-12.30  
S&Lchildrenscentres@cambridgeshire.gov.uk

Tara Hebdictch for Linton Children’s Centre team

LONG & SHORT STAY  
ACCOMMODATION

COTTAGE &  
CONVERTED BARN

HOLIDAYS, WEEKENDS  
BED & BREAKFAST

WEST WRATTING  
CAMBRIDGE, CB21 5LU

T: 01223 290492  
www.bakerycottage.co.uk

**A & R  
PLASTERING**

All aspects of plastering  
undertaken:  
Plasterboarding  
Rendering  
No job too small  
30+ years experience  
Free estimates

Tel: 01223890228  
Mobile: 0774 8627920

**STEVE WEBB**  
Painter  
&  
Decorator

Over 30 years experience

CITY & GUILDS CERTIFICATES

Montford Barn  
Horseheath

Tel: 01223 893864  
Mobile: 07772991373

**NRS CARPETS**



HOME SELECTION  
FREE MEASURING &  
ESTIMATING  
All types of flooring  
available

Tel: 01223 893634  
Mobile: 07885 173113

**THE LINTON NEWS** Next Publication 2<sup>nd</sup> November 2015  
**DEADLINES for ADVERTS Monday 12<sup>th</sup> October**  
**NEWS ITEMS Wednesday 14<sup>th</sup> October**

**ITEMS FOR ADVERTISING MANAGER**  
**Limited space on waiting list for Linton businesses**  
Changes to ads can be sent to: Judith Rouse  
email: adds@linton.info

**ITEMS FOR THE EDITOR**  
**Can be put in the Linton News Box in the Post Office**  
Editor: Fran Armes email: lneditor@linton.info  
Phone 891517

**For distribution queries contact: Kate France 891602**

## LINTON DIARY


For entry in this list, ensure that your event is written into the diary in the Post Office; failure to do so could mean non-entry to the diary here. You may also email your event details to diary@linton.info, or use the form on www.linton.info.  
Call 971797 for an audio version of the Linton News.

Details of items in bold type may be found in this edition.

Seedlings Alternate Mondays 1.15-2.45pm	CC
Chestnutbaby/toddlergroup, 9.30-11.30am Mondays	termtimeCC
Linton Granta football bingo, 7pm Mondays	Pavilion
Linton theatre workshop, Mondays (call Joe 01440 703701)	
WEA, Tuesdays, 10am term-time	VH
Linton Air Cadets Mon and Thurs 7-9.30pm (07717801056)	LVC
Scrabble club, 10am-12noon alternate Tuesdays	CP
Linton Granta playgrp, 9am-12noon Monday-Friday	LVC
Linton Granta Toddler grp, 9.30-11.30 Tuesdays	term timeLVC
Linton Granta playgrp, 12.30-2.30pm Mon-Fri, NOT Tues	LVC
Storytime, 2-2.30pm Tuesdays, term-time	Library
Granta Bridge club, 2pm Tuesdays	VH
Linton chess club, 7.30pm Tuesdays (893509)	CC
Granta duplicate bridge club, 2-4pm Tuesdays	VH
IT club, 7pm Tuesdays	CC
Tots in tow, 10-11.30am Wednesdays term time only	VH
Jelly Beans playgroup, 9-11.30am Thursdays	URC
New Beginnings (with Baby Sensory), 1.15-2.45pm, Thursdays	CC
Computer buddies, 2-4pm, Thursdays	Library
Cricknet club, 6-8pm Thursdays	RG, LVC
Carpet bowls, 7.30pm Thursdays	VH
Table tennis club, 8-10pm Thursdays term time only	URC hall
Parents, carers and tots Mocha house, 9.15-10am Fridays	CP
Stay and Play, Fridays 10am – 11.30am	CC
St Mary’s church choir, 7-8.30pm Fridays	St Mary’s
Bridge club, 7pm Fridays	CC
For sports centre courses please call LVC sports centre on 890248	

<b>OCTOBER 2015</b>	
3 Farmers’ Market, 9am-12noon	LVC
<b>3 LVC tabletop sale, 9am-12noon</b>	<b>LVC</b>
3 Linton Infant PTFA family Ceilidh, 5pm	VH
5 Camera Club, 7.15pm	CC
<b>6 WI, 7.30pm</b>	<b>VH</b>
7 Bellplate ringing, 10.30am-12 noon	URC
7 Reading Group, 8pm	VH (upstairs)
<b>8 LVC open day, 5.30-8.30pm</b>	<b>LVC</b>
<b>9 Health &amp; wellbeing taster, 8pm, Strictly dance studio</b>	
11 Lighthouse, 10.15-12noon	URC
12 Whist drive, 7.30pm	VH
<b>13 ACE outing to Peterborough, 9.30am</b>	<b>D&amp;D</b>
13 VIP group, 2pm	Chalklands
<b>13 Gardening Club, 7.30pm</b>	<b>VH</b>
14 Community Navigator, 10am -12noon	HC
15 Parish Council meeting	CC
16 Daylight readers, 10.30am	Library
18 Walking group, 11am	Church Lane
18 Messy Church, 2.30pm	St Mary’s
<b>20 Historical society, 7.30pm</b>	<b>VH</b>
<b>21 Cambridge Hearing Help, 9.30am -12noon</b>	<b>HC</b>
21 Bellplate ringing, 10.30am-12 noon	URC
<b>22 Granta Grapevine AGM, 7pm</b>	<b>Chalklands</b>
<b>23 Linton Music concert, 7.30pm</b>	<b>LVC</b>
<b>24 Camera Club exhibition, 10am</b>	<b>VH</b>

<b>NOVEMBER 2015</b>	
2 Camera Club, 7.15pm	CC
<b>2 All Souls service, 7.30pm</b>	<b>St Mary’s</b>
<b>3 WI, 7.30pm</b>	<b>VH</b>
4 Bellplate ringing, 10.30am-12noon	URC
4 Reading Group, 8pm	VH (upstairs)
KEY: CC Cathodeon centre, CP church pavilion, D&D Dog and Duck, HC health centre, LH Linton Heights school, LIS Linton Infant school, LVC Linton village college, RG recreation ground, URC United Reform church, VH village hall.	
<b>Library times:</b> Mon closed; Tue 10am-5pm; Wed 4pm-7pm; Thurs 2pm-5pm; Fri 10am-5pm; Sat 10am-1pm.	
<b>Linton refuse collection: 12<sup>th</sup> and 26<sup>th</sup> October</b>	
<b>Linton recycling collection: 5<sup>th</sup> and 19<sup>th</sup> October</b>	



**MOPS HAIR SALON**

**HAIR BY JO DENNY**  
WOMEN | MEN | CHILDREN  
CUTTING & COLOURING

41 LINTON HIGH STREET  
(BEHIND BOSWELL’S BAKERY)  
**t: 01223 893 285**

**GLENWOOD**  
BOLTS & SCREWS LTD

www.glenwoodbolts.co.uk



SUPPLIERS OF QUALITY  
FASTENERS, FIXINGS &  
SILVERLINE TOOLS

Unit 2 Lintech Court  
The Grip Industrial Estate, Linton  
Cambridge, CB21 4XN  
Tel: 01223 892095 / 893931  
Fax: 01223 894122





## Music for all tastes

A VARIED programme of concerts and events is being planned by Linton Music and Linton Youth Music. From brass ensemble *Tube* this month, followed by concerts including the Lucy Cavendish Singers, Marmen String Quartet and electric violinist Steve Bingham, there really will be something for everyone!

The Linton Music season opens at 7.30pm on Friday 23<sup>rd</sup> October at LVC when *Tube*, an ensemble of five brass musicians from Cambridge and Haverhill, will entertain us playing popular pieces from the classical repertoire, alongside classic songs from popular music; Bach, Mozart, Brahms, Elgar, Gershwin, Radiohead, The Beatles, Queen, and more. The concert will have a relaxed atmosphere, with a bar, and will also feature local youth musicians (see the Linton Youth Music article below). Tickets available on the door or in advance from Sweet Talk News.

That is just the start of our musical season. We have events coming up in the coming months; final dates and details of these, along with information about ticket prices and discounts for Linton Music Society Members, can be found on the Linton Music website: [www.lintonmusic.org.uk](http://www.lintonmusic.org.uk) or contact Linda Bird 893600.

Emma Mason



Brass ensemble Tube

Picture supplied by Emma Mason



## Packed agenda for young musicians

AFTER a slightly soggy, but hugely successful Midsummer Musical Picnic, Linton Youth Music have again been busy making plans. Working alongside Linton Music we are really excited about two musical opportunities for young people in Linton and surrounding villages. Both events have been funded from the proceeds raised by the Linton Youth Music picnic.

Firstly, on Friday 23<sup>rd</sup> October, Gavin Bowyer (Trumpet) and Sarah Minchin (Trombone) will run a brass music workshop at Linton Heights Junior school.

They will visit children from

Years 3 and 6 to share their knowledge and enthusiasm for brass music.

Gavin and Sarah will also work with young brass musicians, including pupils visiting from some of the Linton cluster schools, and this will culminate in a short performance at the evening concert which is being given by professional Brass quintet Tube (see Linton Music article above).

On Friday 11<sup>th</sup> December we welcome Steve Bingham to Linton—more about that next month.

Plus we need your help to create the World's Largest Smartphone Orchestra. Are you up for a challenge? More details to follow in the November Linton News, or on the Linton Youth Music facebook page – the evening looks to be fun for all ages.

For more details contact Bob or Linda Bird on 893600.

Emma Mason



DOES a local charity or organisation you know need support? If so, then the Sawston Fun Run organisers, the Rotary Club of Cambridge Sawston, want to hear from you. They are inviting local charities and organisations to apply to be a beneficiary of the 2016 event to be held on Sunday 8<sup>th</sup> May.

The event regularly donates over £15,000 to local charities and organisations. Since 1986 it has donated over £411,000 to local hospitals, hospices, schools, youth groups, support groups and local branches of national charities.

Charities and organisations that serve the local community and especially those in South Cambridgeshire will be given preference in the selection process. Applicants need to identify a specific project or activity needing support, who will benefit, when funds are needed, and the impact any funding will have.

Whilst capital projects are preferred, the selection is based on the strength of each case. The closing date for applications is 30<sup>th</sup> November. Application forms are available from the website [www.sawstonfunrun.co.uk](http://www.sawstonfunrun.co.uk) or by phoning the organisers.

The event has expanded over the years so it engages with all sections of the community and regularly attracts about 1,000 entrants. It has become the largest community event of its type in the area – organised and managed totally by volunteers with local businesses and retailers giving their support.

Entry forms will be available from February 2016 on [www.sawstonfunrun.co.uk](http://www.sawstonfunrun.co.uk) and at branches of The Cambridge Building Society. For further information contact Ian Chamberlain 872443, email: [thecoolian@hotmail.com](mailto:thecoolian@hotmail.com) or Tony Collett 893447, email: [t.collett@virgin.net](mailto:t.collett@virgin.net).

Past sponsors and advertisers are already confirming their backing; any business, organisation or individuals wishing to become involved in the Fun Run can contact me on 893447.

Rotarian Tony Collett

## A candle and prayers for your loved ones

AT St Mary's church we will be commemorating All Souls' Day with a simple service to remember those we love who have died. We send an invitation to the family and friends of those who have died in the last three years to join us. However, everyone is welcome to attend the service at 7.30pm on Monday 2<sup>nd</sup> November. During this act of remembrance the congregation is invited to either light a candle or have one lit for each person being remembered. In addition to this the names of those we wish to remember will be read out during a period of prayer. Please contact me to have a name added to our list.

There will also be an opportunity for individuals to pray, or be prayed for, with members of St Mary's.

Refreshments will be served after the service for those who would like to stay.

Sue Filby, [suef4rector@btinternet.com](mailto:suef4rector@btinternet.com)

## Shop on the way to Peterborough

ACEs are on their travels again – with another coach trip on Tuesday 13<sup>th</sup> October. This time we are off to Peterborough with its Cathedral, other historic sites and interesting places to eat, as well as the shopping.

On the way we will stop at the Van Hage Garden Centre with so much more than just plants to see and buy. We will come back the picturesque way, through the Fens and villages.

The coach will pick up at the Dog and Duck at 9.30am, then at the Cemetery and Fire Station, as usual.

Pay on the bus and hopefully we will be as popular as our last trip, and the more we have on the coach the less it will cost.

Please call Enid 891069 or Linda 892923 to book.

Enid Smith

TRIPLE J FITNESS

★ AMAZING GYM DEALS ★

Best ever! check out these great offers...

GYM BUDDY £20 per month

NEW! STUDENT MEMBERSHIP £45 FOR A DOUBLE MEMBERSHIP

★ STANDARD MEMBERSHIP FROM JUST £22.92 per month! ★

YEARLY, MONTHLY AND PAY-AS-YOU-GO OPTIONS AVAILABLE

01223 89 11 64 [joe@triplefitness.co.uk](mailto:joe@triplefitness.co.uk)

[www.triplefitness.co.uk](http://www.triplefitness.co.uk)

DACRE LONG

Local Painter and Decorator

66 Chalklands, Linton

Professional work to highest standard for over 15 years

Trade and Private Customers

Free quotes with written specification

Phone 01223 893176 or 07837513837

Discounts for Senior Citizens

Nina, Carl, Nicola and Helen welcome you to

**Boyz 2 MEN BARBER SHOP**

Opening Hours:

Monday	Closed
Tuesday	9:00am - 6pm
Wednesday	9:00am - 8:30pm
Thursday	9:00am - 6pm
Friday	9:00am - 6pm
Saturday	8:00am - 3pm

Fully air conditioned

LATE EVENING 'TIL 8:30PM

Wednesday

Traditional Hot towel wet shave

no need to book an appointment.

Special rates for senior citizens Tuesday - Friday only

<http://www.boyz2menbarbershop.co.uk/>

113<sup>A</sup> High Street, Linton

Tel: 01223 894481

**PJB Maintenance**

No job too small

Ground work, Patios, Floor & Wall Tiling, Fencing, Roof repairs, Demolition

CPSC Licence

Free Estimates

Call Peter Belsom on

Mob: 07799 183308

Tel: 01223 891273

**CHIMNEY SWEEP**

**J. L. WIGHT**

Guild of Master Sweeps.

Qualified advice

Problems solved

Certificates issued.

[www.camsweep.co.uk](http://www.camsweep.co.uk)

**01954 253315**

9 Cow Lane, Rampton

**Westlakes**

Painting & decorating exterior and interior

**Les Westlake**

Mobile: 07929 501101

Tel: 01223 892866

**Clive Westlake**

Mobile: 07900492127

**ClearTax & ACCOUNTING LTD**

Quality, friendly accounting services and taxation advice.

Sole trader and small company specialist.

Free initial consultation

The Granary, Yews Farm Yard, Hadstock

t: 01223 894036

e: [janine@cleartax.co.uk](mailto:janine@cleartax.co.uk)

[www.cleartax.co.uk](http://www.cleartax.co.uk)

## A timely new wall for the churchyard

OVER the past month or two you may have noticed, as you pass through St Mary's churchyard, that the wall bordering the garden of remembrance is being renovated. Glenn Darby, a bricklayer and flint layer from Streetly End who specialises in renovation work, is now nearing the end of the job. He explained to me that the top of the 600-year-old wall has deteriorated over the years and was probably last pointed in the 60s.

Too much weathering has caused the breakup of the mortar. This allows water in and would eventually affect the rest of the wall. Although the wall will look newer than the one to the south, Glenn has used the old bricks and tried to keep as much moss on them as possible. He assured me that before too long, the bricks will weather and the wall will then be ready to withstand the elements for a good few years to come.

Sarah Hurcum



Nearly there: Glenn at work on the wall

Picture by Sarah Hurcum

## Camera club exhibition

SATURDAY 24<sup>th</sup> October is a day in the Linton year that is not to be missed. Go along to the village hall between 10am and 4pm to view an excellent array of photographs at the Linton Camera Club annual exhibition. Admission is absolutely free but you can treat yourself to tea, coffee, delectable cakes and an excellent raffle with some exciting prizes.

Also on offer will be a wide selection of cards produced by the club to suit every occasion. For further details contact Anthony Smith 892657 or [anth0ny.sm1th47@btinternet.com](mailto:anth0ny.sm1th47@btinternet.com).

Jan Shambrook



## Switch energy supplier and save money

THE Cambridgeshire Energy Switch scheme has been launched for the fifth time; registration is now open.

Previously, the scheme has enabled over 700 households in the county to make average savings of over £200 per year.

Registration is completely free with no obligation.

The scheme is backed by Cambridgeshire County Council as well as the county's five District and City councils.

The Cambridgeshire Energy Switch scheme uses the collective bargaining power of residents to bid for better gas

and electricity prices.

The scheme is open to all residents, including those on either credit or pre-payment meters.

Register before midnight on Monday 12<sup>th</sup> October to find out whether you could save money on your energy bills.

To register online or find out more, visit: [www.cambridgeshire.gov.uk/switch](http://www.cambridgeshire.gov.uk/switch).

Alternatively, contact us for further information or assistance by ringing 703874 or emailing:

[Energy.Switch@cambridgeshire.gov.uk](mailto:Energy.Switch@cambridgeshire.gov.uk)

## Benten & Co.

Chartered Certified Accountants

*We are a friendly, well established firm, large enough to deal with most accountancy and taxation matters.*

*Please telephone for an initial consultation (without obligation)*

Abbey House, 51 High Street, Saffron Walden  
Telephone 01799 523053  
[www.benten.co.uk](http://www.benten.co.uk)

**SHINE WINDOW CLEANING SERVICES**

INTERIOR AND EXTERIOR WINDOWS, GUTTERS, FASCIA'S, CONSERVATORIES AND PATIO CLEANING

62 Bartlow Road, Linton, Cambs CB21 4LY

Tel. **01223 890491**  
Mob. **07587 866309**

PLEASE CONTACT FOR A FREE QUOTATION

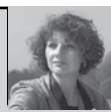
FULL PUBLIC LIABILITY INSURANCE

[shinewindowcleaningservices@gmail.com](mailto:shinewindowcleaningservices@gmail.com)



## Linton Country Matters by Frances Armes

Illustrated by Maureen Williams



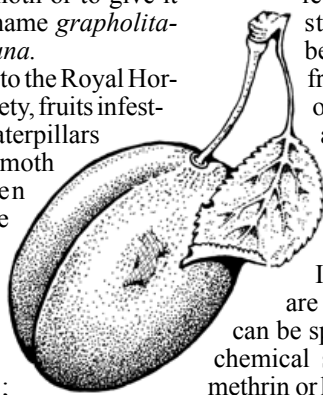
## Autumn fruits are bursting with life - but beware

I HAVE seen countless crab apple trees laden with fruit in the wild this year; the blackberries are full and luscious too. In gardens the apples, plums, soft fruits and figs are doing well.

However there is a fly in the ointment, or rather more than one. Many plums have burst their skins, probably from drought followed by flood. Even worse, a friend of mine reported that she had a bumper crop of plums but sadly they were full of maggots or caterpillars. This was probably due to a rather nasty pest which affects plums, especially

Victoria plums, damsons and gages, that is the caterpillar of the plum moth or to give it its scientific name *grapholita-cydia-funebrana*.

According to the Royal Horticultural Society, fruits infested with the caterpillars of the plum moth usually ripen early and are often slightly misshapen. The caterpillar inside the fruit is up to 12mm long; it is pale pink



with a brown head and leaves light brown excrement pellets near the plum stone where it has been feeding. Those fruits that ripen later on the tree often have a much lower rate of infestation.

In order to control this pest, it is suggested on the Internet that if trees are small enough, they can be sprayed with soap or chemical sprays using deltamethrin or lambda-cyhalothrin, somewhere around mid-June

depending on the weather.

Another way is to spray nematodes to the tree trunk, the main branches and the soil beneath the tree in September or early October to kill the overwintering larvae and pupae.

Alternatively, in early May set up pheromone traps which have similar pheromones to the female moths, thus attracting the male moth which then gets stuck in a trap. Or for small trees cover with a fine mesh.

Some private growers are very despondent about the success of all but this last control.

## Autumn activities at Wandlebury

Part of Cambridge Past Present and Future

**Note:** Booking is essential for all these events and most must be paid for in advance.

**FUNGAL Foray** from 11.30am to 1pm on Saturday 17<sup>th</sup> October. For adults only.

Hear from an expert all about the fascinating array of fungi that thrives at this time of year.

**Awesome Autumn** 10am to 12noon on Tuesday 27<sup>th</sup> October. For children aged five and over. Children must be accompanied throughout this event.

Explore the park and find out how wildlife prepares for winter here.

**Spiders** 10am to 12 noon on Wednesday 28<sup>th</sup> October. For children aged five and over. All children must be accompanied by an adult throughout the event.

The team will be on hand to help you hunt out these eight-legged creatures who weave their beautiful silk homes all around the park.

**Warm Woods** 10am to 4pm on Friday 30<sup>th</sup> October. For children aged eight and over. £30 per child (members £25).

You'll build dens, make fires, cook bread and toast marshmallows, practice tracking and play problem solving games.

**Halloween Fun** 3.30 to 6.30pm on Saturday 31<sup>st</sup> October.

Come along in fancy dress for this popular evening of Halloween howls and carve a pumpkin. NB: Early booking is recommended for this very popular event. £8 per pumpkin (£6 to members).

For more details on any event such as where to meet and what to bring, email [bookings@cambridgeppf.org](mailto:bookings@cambridgeppf.org), call 243830 extension 207 or visit [www.cambridgeppf.org/whats-on](http://www.cambridgeppf.org/whats-on)

Editor

## Evening of alternatives to your usual healthcare

AT the Strictly Dance studio on 9<sup>th</sup> October there will be a gathering of the best health and wellbeing professionals from disciplines such as acupuncture, chiropractic, pilates and reiki. This will be an evening of demonstrations, tasters and trials starting at 8pm.

Organiser, Ed Groenhart of Cambridge Family Chiropractic Centre commented: "We are hoping to be able to help a lot of people to find out more about the so-called complementary and alternative healthcare on offer. It is surprising how many great professionals we have in the village, and yet how little awareness there is about what it is that we all do, and how much we can help people who have perhaps been told to live with problems."

Entry to the event is free, although there will be donations requested for the two charities that the event will support.

These are Leukaemia and Lymphoma Research, now named Bloodwise, and EACH East Anglia's Children's Hospices.

On arrival there will be a complimentary glass of bubbly and nibbles, provided by the Linton Kitchen, and a goody bag.

Ed Groenhart

## End of season match with curry



Ian and Sam with the winner's trophy and players Stanley Leech and Taylor Polley

Picture taken by Sarah Gray

A CHARITY 20:20 cricket match took place at the recreation ground between Linton Village Cricket Club XI and a MR Barber XI on Sunday 6<sup>th</sup> September.

The event raised over £100 to support the development of children's cricket at the village club. The sun shone for what was the last match of 2015. The cricket club side made 116 runs off 20 overs and a spirited reply from the MR Barber team

saw them reach 109 in reply. The event was organised by Ian Martin of LVCC and Sam Prior for MR Barber.

The trophy, complete with a golden cricket ball and barber-shop comb will reside in the pavilion until a return game is organised next summer.

Thanks go to Linton Tandoori who kindly supported the event and supplied delicious curry for the players and spectators.

Darren Leech

## Buy your gifts in Balsham

FOLLOWING the magnificent success of our 25<sup>th</sup> Annual Craft and Gift fair last year, when we had nearly 1,000 people come through our doors, please do join us once again. Meadow School's fair will be from 10.30am to 4pm on Saturday 10<sup>th</sup> and Sunday 11<sup>th</sup> October. Entrance fee is £1 for adults, 50p for concessions and children.

There will be over 50 stalls of locally handmade crafts and gifts, a food hall and café, face painting and lucky dip etc.

For more information see: [www.facebook.com/balsham-craftfair](http://www.facebook.com/balsham-craftfair). The school's number is 894400

Debbie Paton

**G. DYE & SONS**  
GENERAL BUILDERS,  
GROUNDWORK & MAINTENANCE,  
CONSERVATORIES & UPVC WINDOWS, KITCHEN &  
BATHROOM REFITS  
ALSO INTERIOR & EXTERIOR DECORATING  
REFERENCES AVAILABLE  
**24 Brinkman Road**  
**Linton**  
**Cambridge**  
**CB21 4XF**  
Tel: **01223 892089**  
Mobile: **07961 342887**  
[georgedy738@btinternet.com](mailto:georgedy738@btinternet.com)  **Free Estimates**

**Michael Beaumont**  
**Butchers Ltd.**  
**Family Butchers**  
**Est. 1965**

Quality meats from local farms including beef raised on our own farm

Award winning Pies

Christmas Orders now being taken

Tel; 01223 894224  
[beaumontsbutchers.com](http://beaumontsbutchers.com)  
High Street, Linton

**AJB FENCING**  
[www.ajbfencing.co.uk](http://www.ajbfencing.co.uk)  
Fencing - Decking - Gates  
All Groundworks  
Free Quotations  
Quality Service  
01223 894795  
07813 070542  
[andy@ajbfencing.co.uk](mailto:andy@ajbfencing.co.uk)

**Chapel**  
Independent Financial Advisers  
SPECIALIST ADVICE ON  
Personal Financial Planning - Pensions  
Investments - Mortgages - Protection  
FREE Initial Consultation - Without Obligation  
 **Ian Cross DipPFS**  
**01223 892821**  
E-mail: [ian@chapel-ifa.co.uk](mailto:ian@chapel-ifa.co.uk) Website: [www.chapel-ifa.co.uk](http://www.chapel-ifa.co.uk)  
De-Salis House, 6 Hillway, Linton, Cambridge, CB21 4JE  
Chapel Independent Financial Advisers LLP is a limited liability partnership which is authorised and regulated by the Financial Conduct Authority  
Registered in England & Wales No. : OC350431

**SQ Car Sales**  
Quality used Cars  
Lintech Court, The Grip, Linton, Cambs CB21 4XN  
**[www.sqcarsales.co.uk](http://www.sqcarsales.co.uk)**  
**01223 778 448** m: 07908 128 164

## POT POURRI 127

## Longest distance

CONSIDER on a map a 10 mile square which has a village at each corner and a further two within.

Now, starting at a corner and visiting all six villages once and ending at the start, what is the longest distance travelled?

Hint: Try and place the two unknowns somewhere inside the square that maximises the distance to be travelled, and straight lines only, no curves, etc.

**Solution to 126 - What was the coinage?**

14 sixpences, 4 florins, 2 half-crowns or 15 sixpences and 5 half-crowns.

Urania

## NEWS IN BRIEF

## Winter green bin collections

DON'T forget, green bin collections change to monthly during winter when far less garden waste is put out for collection.

Monthly collections will start at the end of November and will return to fortnightly in March for the rest of the year.

Collection dates can be found on page 24 of the autumn South Cambs Magazine or online at [www.scambs.gov.uk/bins-by-parish](http://www.scambs.gov.uk/bins-by-parish).

For more information visit [www.scambs.gov.uk/content/changes-green-bin-collections-over-winter](http://www.scambs.gov.uk/content/changes-green-bin-collections-over-winter)

## Rainbows' jumble sale

THIS will be held from 2pm on Saturday 17<sup>th</sup> October at the Village Hall. People can bring items along in the morning between 10am and 12noon. There will be books, toys, tombola, a raffle and teas.

Carol Thexton, 891731

## Friends of LVC table top sales

THESE will be like an indoor car boot sale, and will be held from 9am to 12noon on Saturday 3<sup>rd</sup> October and Saturday 7<sup>th</sup> November at the same time as the Farmers' Market. Get rid of your unwanted items, make a few pounds or just come along and pick up a bargain and raise some money for Linton Village College.

To book a table (£7), please call Joyce or Tracey on 891790 or 07508908735.

Tracey Zambrana

## Hildersham News

## Holy Trinity Heritage Day

THIS year is the 150<sup>th</sup> anniversary of the beautiful east window in Hildersham Church and the 125<sup>th</sup> anniversary of the chancel wall paintings. At 3pm on Sunday 4<sup>th</sup> October Andrew Westwood-Bate will give a talk on the work of Clayton and Bell, designers of both the east window and the murals, followed by a tour. There will be an archaeological display showing the discovery of 32 skeletons beneath the new north porch, rubbing of the four mediaeval brasses, teas and the chance to add to the *penny path*, so start saving pennies and tuppences. The day will close with a Choral Evensong Thanksgiving service at 6pm.

## Kings Taverners Concert at Hildersham Church

THIS accomplished group of musicians, some of whom will be familiar from Shakespearean performances by The Outspoken Theatre Company, will present their annual concert at 7.30pm on 17<sup>th</sup> October with music to reflect the theme, *Love, Honour and Behave*.

Tickets are £10, U18 £5 including refreshments.

Tickets in advance from me on [catherinemyer43@btinternet.com](mailto:catherinemyer43@btinternet.com) or 892848, and at the door.

This is always a delightful evening with a range of music from fun to folk to reflective.

Cathy Myer

 **Designer Drapes** Tel: 01223890556  
Linton rd Hadstock  
For all your Curtains & Blinds give us a call.  
Curtain alterations. PATCHWORK LESSONS  
Free measuring Mondays and Tuesdays  
Fitting service Book your place now  
Haberdashery spaces limited  
Quilting fabrics Sewing machine repair and service  
Upholstery service Remnants and Rollends  
Fabric sold by the metre  
[designerdrapescurtains.co.uk](http://designerdrapescurtains.co.uk) [designerdrapes2@gmail.com](mailto:designerdrapes2@gmail.com)

**Linton Complementary Health Centre**  
2b Bartlow Road, Linton  
• Acupuncture, Peter White; MSc, MBACc  
• Massage, Peter White; MSc, Dip. Massage  
• Shiatsu, Cindy Faulkner; BA, MRSS  
• Chiropody, Sharon Bennett; M.Inst.Ch.P  
• Counselling, Debbie Soar; NNEB, Dip.Couns  
Telephone: 01223 891145  
Web Site: [www.lintonhealth.co.uk](http://www.lintonhealth.co.uk)





## The Derbyshire Post



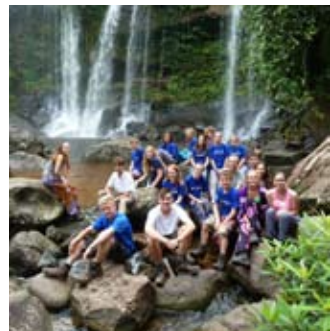
WELL, we are back in business at LVC after the summer break and once more enjoying successful examination results. Overall the class of 2015 achieved a headline figure of 71% A\* - C grades ... a figure which is set to go up, we think, following some very erratic and unexpected grades in English, Spanish and drama. Requests for re-marks have gone in and we have already seen some grade uplifts. The whole matter of poor exam marking creates stress and frustration for teachers and students alike but demanding re-marks is now just seen as part of the normal process – like a level of acceptable system failure. It is no fun, and is not acceptable to us, when college places depend on particular grades.

By the time this article is posted through your door, the College Trustees and Governors will have interviewed for the position of Executive Principal. The interviews were on 17<sup>th</sup> and 18<sup>th</sup> September and will involve staff, governor and student panels and a stretching set of tasks and challenges. A special place like LVC deserves a special kind of person to lead it and I have complete faith that the trustees will choose wisely and that both the college and the Meadow School will continue to go from strength to strength.

If an appointment is made, the November edition of the Linton News will be the perfect opportunity to introduce the Executive Principal to the community.

Caroline Derbyshire, Executive Principal

## Shoeless children help LVC volunteers



A welcome end to a hot four day trek

Picture supplied by the LVC

I WAS lucky enough to spend 28 nights in the beautiful country of Cambodia this summer on a Camps International expedition with 21 of our year 11 leavers.

We spent 17 nights sleeping in longhouses, surrounded by praying mantis, crickets, rats, frogs, geckos and snakes. The pupils all worked really hard and the work we carried out will benefit the people of the two communities in which we worked for years to come. We are all now proficient in bashing termite hills, fixing roads, digging trenches, sandpapering school buildings, plastering, bricklaying etc.

The highlight of our trip was when the school we were working in closed classes for the day to allow approximately 200 children to join us in laying hardcore for a new school

driveway. We were working in extreme heat and humidity, wearing work boots and heavy duty gloves, whilst the local children, aged from five to 16, worked shoeless and with their bare hands, all with huge smiles on their faces.

We also took on a four day, 40-mile trek over the Kulen mountain, which was once the capital city of Cambodia. This included sleeping in hammocks slung beneath a Buddhist temple. It was the start of the rainy season and the time when chanting goes on almost 24/7. Regardless of this, and the lack of sleep for all, it was another unforgettable experience.

We spent two periods of three nights in a hotel. During these times we visited Angkor Wat, Ta Prohm (of Tomb Raider fame) and the Bayon temples, the S21 genocide museum and the killing fields. Some of these visits were hard for us all, but were without doubt an important part of the trip.

Overall, it was an amazing, emotional, awesome, hot and humid trip. My lasting memories will be the beautiful country, the friendly welcoming people and our fabulous 21 students who were all a real credit to themselves and their families.

Tracey Johnson  
Teaching Assistant



## The Way We Were by Garth Collard

### A hundred years of the Women's Institute

THIS year is the centenary of the WI; founded in Wales in 1915. A meeting in Linton in May 1918 decided to found a Linton branch which met monthly on Tuesdays, initially at the Red Cross hut in Coles Lane, now the village hall site, and after April 1922 at the newly opened Shepherds Hall in Market Lane.

The Linton branch concentrated on educational and gardening aspects. Early talks included hints on gardening, Charles Dickens and the League of Nations. Dr William Palmer opened his garden and gave talks on the history of Linton and his holidays in Italy and India. Membership soon rose to 120 and the first president was Mrs Ellis Long of The Beeches in Green Lane. A number of fêtes were held in her grounds to raise funds and encourage competitions in domestic crafts and garden produce.

In 1921 Mr Robert Adene of Babraham Hall displayed items he had acquired 35 years previously when he lived in India including a bangle and ankle ornaments which he

took from the stomach of a crocodile he had shot. Members competed in raffia work, papier mâché work, lace making and crochet.

The WI in Britain had 2,400 branches and 150,000 members. Each village in the Linton district had a branch. Meetings included active games, competitions and quizzes. In 1922 the WI bought a cast iron bench to be placed in the cemetery by the war memorial. A brass plaque is attached dedicated to the war dead.

The WI nationally has always campaigned on social issues, and in the late 1920s inhumane slaughtering of

animals was a key issue. In Linton the WI pressurised Mr Backler, the butcher of 23 High Street, to adopt humane killing.

By the early 1930s membership numbers fell to the low 40s and only increased when there were outings. Popular venues were Clacton, Southend and Yarmouth when three coach loads went for a day out.

Two reasons for the fall in membership were the departure of many of the richer members whose gardens had always been popular venues for fêtes and exhibitions and the paucity of interesting topics. There was a general malaise in the

village since the British Legion branch and the Cub Scouts folded.

In the mid 1930s the WI revived with the arrival of Mrs Charles, the wife of the new vicar, who concentrated on household crafts like raffia work, basket making and flower arranging. Dr Palmer opened his garden at Richmonds for fêtes and educational talks.

Members played a large part in WWII. They welcomed evacuees and arranged their billeting and encouraged the preserving of

food, especially fruit. In 1940 they made 200lb of jam from surplus fruit for which they received a special ration of sugar from the Ministry. Many members were also in the Red Cross and the Women's Voluntary Service.

In the early part of the war the branch knitted a wide range of clothing for evacuees, including knickers for boys and girls. They also collected money for Mr Churchill's fund to aid Russia.

The WI continues to flourish both nationally and locally. The Linton branch meets on the first Tuesday of each month in the village hall.



The WI of 1942 in the Village College garden

Picture from Garth's collections

## LVC opens its doors

**THE annual Open Evening for prospective students and parents will take place from 5.30-8.30pm on Thursday 8<sup>th</sup> October. Although this event is aimed mainly at Year 6 pupils and their parents, all current parents are welcome to attend.**

**The Principal will give presentations in the West Common Room at 5.45pm, 6.30pm and 7.30pm and there will be the opportunity to take tours of the college with student prefects.**

**Lessons will finish at lunchtime that day to allow time for preparation, and school buses will leave shortly after 1.05pm.**

## Tea and boobie bakes

CAN you host an afternoon tea party to help raise money for the Addenbrooke's Breast Cancer Appeal? If so invite friends, family and colleagues on Friday 23<sup>rd</sup> October (or a date convenient to you) for tea and fun *boobie* bakes. How about bakewell tarts, chelsea buns or macaroons? Your support will help fund clinical research into personalising treatment for patients with breast cancer. To find out more please call Emily at Addenbrooke's Charitable Trust (ACT) on 349297, email [communityfundraising@addenbrookes.nhs.uk](mailto:communityfundraising@addenbrookes.nhs.uk) or go to [www.act4addenbrookes.org.uk/ABCappeal](http://www.act4addenbrookes.org.uk/ABCappeal)

Jo Elliott, Media and Communications Manager ACT

## Acupuncture and Massage in Linton

Some of the conditions acupuncture can help ...

- sports injury and tension
- back, knee, hip, shoulder and elbow pain, rheumatism
- fertility optimisation, IVF, pregnancy and menstrual
- headache and migraine, stress
- high blood pressure and circulation conditions
- anxiety and addictions

Peter White MBAC, MSc, MBAC.

Call: 01223 891145 for an appointment or free assessment

Email: [enquiries@lintonhealth.co.uk](mailto:enquiries@lintonhealth.co.uk)

## Springfield House B&B

14/16 Horn Lane, Linton  
River views from bedrooms & guest lounge  
Tel: 01223 891383

[www.springfieldhouselinton.com](http://www.springfieldhouselinton.com)

## BED & BREAKFAST

Mrs Monica Clarkson  
4 Harefield Rise, Linton  
Tel: 01223 892988  
Quiet modern bungalow  
Families welcome  
No Smoking

## WATERCOLOUR PAINTING

Explore the magical world of watercolour painting with an experienced artist, in the comfort of your own home.  
For details, please contact:  
Susan Mackenzie (01223) 891521 or:  
[sjhmack2@yahoo.co.uk](mailto:sjhmack2@yahoo.co.uk)

## For All Alterations to LADIES' or GENTLEMEN'S CLOTHING

Ring HEMLINE  
Tel: 01223 891034

**Little Hands Nursery School - Linton & Bartlow**  
Three Hills Farm, Bartlow

A private Nursery School specialising in quality preschool care and education for the under fives

High staff to child ratio, individual child centred planning & learning  
Flexible booking system for the 08.00am - 6.00pm nursery day  
Optional holiday clubs available, dedicated baby room for the under twos  
We accept nursery funding giving 15 hours per week of free funded nursery for all 3 and 4 year olds and eligible 2 year olds

For further details contact Mandy Norris, nursery manager 01223 897945  
E-mail: [h-bartlow@btconnect.com](mailto:h-bartlow@btconnect.com)

Little Hands is also at Bourn, Melbourn and Newton  
visit the website at [www.littlehands.co.uk](http://www.littlehands.co.uk)

**CHRISTOPHER MARKHAM**  
HOME & GARDEN SERVICES

Interior/Exterior Decorating  
Fencing, Guttering  
Turfing, Garden Clearance  
Lawn & Hedge Cutting  
Decking & Patio Cleaning  
Patios & Driveways  
Call on  
(01223) 892889  
or 07973294946  
No job too small...

**MOBILE CHIROPRACTIC SERVICE**

GCC-Registered Chiropractor  
**ALEXANDER M SMITH**  
01223 967565  
SOUTH CAMBS AREA  
(Based in Linton)

Effective care in the comfort of your home

- Low back pain & sciatica
- Neck pain & headaches
- Muscle spasm/tension
- Shoulder & Knee pain
- Postural problems

[www.alexandersmithchiropractor.co.uk](http://www.alexandersmithchiropractor.co.uk)

**LINTON VILLAGE MOTORS**  
(situated in Great Abington opposite Granta Park)  
[www.lintonvillagemotors.co.uk](http://www.lintonvillagemotors.co.uk)

Tel: 01223 830550

- MOT testing
- All makes of vehicles serviced and repaired
- Tyres at competitive prices
- courtesy car provided
- Polite and friendly staff

Mon-Fri: 8.30am-5.30pm Sat: 8.30am-12.30pm

**PLUMBLINE**

**PLUMBING AND HEATING ENGINEER**  
PROFESSIONAL DOMESTIC PLUMBING SERVICE

Including Property Maintenance  
Painting: Tiling: Plastering: Carpentry

Call John on  
**01223 893903**  
[Supcik@talktalk.net](mailto:Supcik@talktalk.net)  
Fully Qualified and Insured

Friendly and Reliable Service No Job Too Small





# Parish Council Matters

## Traffic matters

Parish Council Matters is written, edited and published by the Parish Council with the support of the Linton News Team.

AMONG the many issues that are raised by residents to the parish council are parking, installation of and renewal of yellow and white lines, speeding, and poor road surfaces.

The traffic working group discuss these issues at their meetings - and on a regular basis with representatives from the Cambridgeshire county council (CCC) highways department - and report these concerns to our county and district councillors. At a recent meeting the Cambridgeshire Constabulary PCSO for our area also attended and informed us that issuing parking tickets was very low on their priorities. We are also constantly told that all budgets have been cut which greatly restricts their ability to carry out our list of requests for work required to maintain safe road surfaces, highways, pavements and footpaths. As we are unlikely to get many improvements carried out in the near future we ask that residents have a little more patience and consideration for other road users by parking sensibly, obeying the speed limit for the short distance of the High Street and the other roads within the 20mph speed limit.

On the issue of parking I am sure we have all witnessed incidents of poor parking which is inconsiderate and a danger to other road users and pedestrians. The habit of parking on footpaths and pavements causes an obstruction and a danger particularly to mobility scooter users and people with children in prams and pushchairs. It is an offence to park on pavements unless the area is specifically marked as a parking zone. Parking on pavements also causes damage to the surface as they are not designed to withstand vehicles. On the estates it is also an offence to cause obstruction on the pavement by allowing your garden to encroach on to the pavement or footpath causing danger to pedestrians.

The opening of the dental surgery in the 'Clock House' is likely to cause problems in finding a suitable parking spot as no provision has been made for patients to park except a small disabled parking area and we would ask patients to park with consideration for other users and particularly residents in that vicinity.

The 20mph speed limit in the centre of the village was installed to reduce the danger of accidents in a busy area which includes a safer route to school, access to the health centre, the main shopping area, and the number of pedestrians, many elderly, using the shops in that vicinity. Is it too much to ask that motorists adhere to the speed limit for this short distance which will add less than a minute to their journeys?



**Sequence showing a not uncommon hold up in the High Street caused by a car parked on double yellow lines near the Co-op**

Pictures by Simon Hill



The condition of the roads and pavement surfaces in the village are in general very poor and we have received emails and phone calls reporting roads and footpaths which residents consider dangerous. In particular Symonds Lane and Back Road are of concern with incidents of pedestrians having to use the roadway as the pavements are in such a bad state. Residents should continue to report these issues to CCC at: <http://www.cambridgeshire.gov.uk/highwayfaults>



**Evidence of the poor state of road and pavement surfaces in Symonds Lane**

Pictures by Simon Hill



We have asked why Dolphin Close, a cul-de-sac, has been resurfaced to a high standard on two occasions in the space of three months, whilst through routes such as Back Road and Symonds Lane have been left in such a poor state. We are still awaiting a reply!

The deadline for this article is early September and whilst preparing it I note that during the last week of August CCC have marked some areas of Symonds Lane, presumably for some remedial work to be carried out in the near future. A pity they could not resurface the whole road to the same specification as Dolphin Close, but at least something is being done.

We as a parish council can only report and put pressure on the county and district councils and hope that some action is eventually taken. Residents can help by reporting these issues to the link above, also copying to the county and district councillors. We ask residents to help by reporting the poor surfaces, parking responsibly and adhering to the speed limits in the village.

Cllr Brian Manley

## Community open space and allotments update

LINTON is very short of public open space - available for the whole community to use - for our current population. We need around 12 acres/five hectares more (plus 10 acres/four hectares for sports) to meet our requirements for the community - a shortfall of over 60%.

To make up the shortfall, Linton parish council (LPC) is trying to buy land, which would include allotments. In

the past Linton has had allotments, but always on lease and subsequently lost to housing development. LPC has a statutory obligation to try to acquire land for allotments, having been requested by residents and been mandated to do this at public meetings. This would not only be allotment land but would include space for community leisure, walking and other activities.

The land identified by the

Linton Allotment Association as being best suiting their needs is on Horseheath Road, just behind Lonsdale. Following meetings with the landowner, the Diocese of Ely, it was clear that this could only be obtained by compulsory purchase (through a public works loan to LPC). We are moving ever closer to having all the information needed for this to be progressed; South Cambridgeshire district council

would undertake this, on our behalf, if they consider our case to be sufficiently compelling.

It is to be emphasised that the land would be bought for Linton, for community use and allotments, for the village to use in perpetuity and protected from development - just as the recreation ground, Camping Close (designated as our village green) and Leadwell Meadows are ours to use freely.

Cllr Enid Bald

## Calling all Linton based community groups ...

IF you would like to apply for parish council funding for the next financial year please contact the parish council office for a grant application form or alternatively download one from [www.lintoncambridgeshire-pc.gov.uk](http://www.lintoncambridgeshire-pc.gov.uk) under the topics heading.

All requests must be accompanied by an annual report and/or current bank statement and be received by the 30<sup>th</sup> November 2015.

**McKenzie & Haywards Garage LTD**

**MOT by appointment while you wait**  
**Servicing, Collection & Delivery Service**

Unit 3 & 4, Lintech Court  
The Grip Industrial Estate  
Linton, Cambs  
CB21 4XN

Tel : 01223 894140  
Fax : 01223 890035  
[mhgarage@btconnect.com](mailto:mhgarage@btconnect.com)

**Cambridgeshire Family Chiropractic Centre**

Family-centred care in Linton for aches and pains as a result of:  
Pregnancy  
Poor Sleep  
Work Stress  
Call 07870568548  
[www.abundanthealthcare.co.uk](http://www.abundanthealthcare.co.uk)

**Small Gifts**

Watch batteries and straps fitted while you wait.  
Jewellery repairs including sizing and polishing.

All repair work carried out on the premises by a professional with 40 years experience.

We stock a selection of:  
Silver Jewellery • Photo Frames •  
Collectables • Toiletries •  
Greeting Cards • Gift Wrap

61 HIGH STREET, LINTON, CAMBRIDGE, CB21 4HS  
TEL: 01223 894225

**Fine Design ENGRAVING**  
trophies, awards, gifts etc

01223 893514  
[fine.design@btinternet.com](mailto:fine.design@btinternet.com)  
[www.finedesignengraving.co.uk](http://www.finedesignengraving.co.uk)

visitors by appointment  
Maureen Williams 53 Chalklands, Linton

**Singing Lessons**  
**Sarah Rosewell**  
BA (Hons) Music

Individual singing lessons available for all ages and abilities  
Whether towards exams or purely for pleasure  
\* CRB Checked  
\* Based in Linton  
For more information contact:  
Sarah on 01223 894861  
Email: [sarahrosewell@hotmail.com](mailto:sarahrosewell@hotmail.com)

Made to Measure  
**CAPRI BLINDS**

\* Verticals \* Roman \* Roller \* Pleated  
\* Venetian \* Wooden  
**CALL NOW FOR**  
free quotation - free measuring - free fitting  
Vertical Blinds now available with wand operation.  
No Cords  
Ideal for Child Safety  
Tel: 01223 894020  
[www.capriblinds.co.uk](http://www.capriblinds.co.uk)

**ProClean**  
*Your complete cleaning solution*

\* Carpet Cleaning \* Rugs \* Stain Removal  
\* Car Valeting \* Caravans \* Motor Homes  
\* Upholstery Cleaning \* Stain Protection  
\* Floor Cleaning / Scrubbing / Sealing / Polishing  
\* Pressure Washing of Patios Paths & Driveways  
\* Domestic Cleaning \* Top Ups & One Off Cleaning  
\* Gutter / Fascia Cleaning  
\* Contract Office Cleaning (Flexible Options)  
**TEL: 890433 Mob: 0777 375 8355**  
74 Bartlow Rd, Linton, Cambridge, CB21 4LY



ABBREVIATED minutes of the Linton parish council (LPC/PC) meeting held at the Cathodeon Centre on Thursday 20<sup>th</sup> August 2015.

**Present:** Cllr Enid Bald (EB)(chairman); Cllr David Champion (DC); Cllr Brian Cox (Dr)(BC); Cllr Simon Hill (SH); Cllr Brian Manley (BM); Cllr Merrie Mannassi (MM); Cllr Nicola Miller (NM); Cllr Graham Potter (GP); Cllr Amy Smith (AS); Cllr Alison Walker (AW); Cllr Beatrice Ward (Dr)(BW). Clerk: Marilyn Strand. District councillor Henry Batchelor (HB).

**Apologies for absence:** Councillors Jan Bumstead; Paul Poulter; Paul Richardson; Jacque Wilson. County & district councillor Roger Hickford.

**Councillors’ declarations of interest:** SH declared a personal interest in the allotments item. DC and MM declared a non-pecuniary interest in the PC office security item.

**Chairman’s comment:** This is the first time LPC has had the potential for paperless meetings as meeting papers had been sent out to some councillors by electronic means only. Well done to everyone involved in putting this into practice.

It is likely that there will be several contentious planning applications received over the next few months. Councillors are reminded not to make comments on proposed developments but to refer to the strategic housing land availability assessments and to listen to residents.

The ACE’s garden party had been very successful. Lucy Frazer, our new MP, and the new rector, Maggie Guite, had also attended. Both ladies had enjoyed the opportunity to meet residents. The chairman thanked them for attending the event; a real contribution to village life.

Linton ACE’s and LPC had received acknowledgement of their support of Age UK in its annual report.

All concerns over the condition of roads and pavements should be reported to Cambridgeshire county council (CCC) by telephone on 0345 045 5212 or via its online fault reporting tool at: <http://www.cambridgeshire.gov.uk/highwayfaults>

**Matters arising/clerk’s report:** The clerk reported that the first electronic post out had been successful but that there are some issues which will need to be addressed before the next meeting.

The electronic bus time notice board at Swan Bridge is now working. The possibility of a board at the A1307 bus stop is being investigated.

Steve Jackson has confirmed that work painting the Swan Bridge should begin in August.

Under a correspondence item from 16<sup>th</sup> July meeting, the Oak tree on the recreation ground is not situated in the conservation area as previously reported although it is a significant tree and will therefore still require permission from South Cambridgeshire district council (SCDC) before any work can be carried out.

Under the Beacon Trust update item from 16<sup>th</sup> July meeting, a meeting will take place when the URC minister returns.

NM and the clerk have been invited to attend Swaffham Bulbeck PC’s meeting on 1<sup>st</sup> September to talk about LPC’s Social Media Policy and Facebook page. The Facebook page now has 241 likes. The chairman congratulated them on this initiative.

HB is still chasing SCDC in regards to the street light at the top of Dolphin Close.

**District and county councillors’ reports & business:** Cllr Batchelor had sent a report which had been circulated before the meeting and this was noted. Cllr Batchelor added that the outline planning application for the proposed development at Horseheath Road had now been validated and is on SCDC’s website.

Cllr Hickford was unable to attend the meeting or send a report. However he had said that he would respond to any concerns the PC wished to raise with him. It was agreed to contact Cllr Hickford about the following: street lighting, road repairs (particularly Horn Lane and Symonds Lane), the condition of footpaths in general and the old caretaker’s house on Dolphin Close which is still standing empty.

**Policies’ review:** The Pensions Discretions Policy had been reviewed by all. It was proposed by BC to accept the policy without changes and the proposal was seconded by MM. All

agreed (one abstention).

**PC office security:** It was proposed by MM that a spare set of office keys would be made available to councillors to sign in and out when needing access to the PC office. The proposal was seconded by BW. All agreed.

**Grant applications:** It was agreed that due diligence should be carried out by the Infant School before the PC could make a decision on whether to award a grant for the proposed outdoor storytelling, education and activity areas. The clerk will contact the school about this. Should there be major projects, they should be submitted to precept for funding.

**Update on Leadwell Meadows:** Invitations to tender for flood amelioration work have been re-sent. BW will supply the name of a third contractor who might also tender for the work.

Invitations to tender for boundary fencing have been sent and quotations received will be brought to the next meeting for consideration.

**Update on the Neighbourhood Plan (NP):** PP had sent a report which had been circulated before the meeting and this was noted. It was agreed that information gathered for the NP should include Linton’s drainage and sewage system, and be circulated to other PC groups as evidence for planning comments.

The grant from Groundwork UK for £7,330 had been approved and received and the chairman thanked PP, PR and Mrs Parry for their work on this.

**Update on allotments:** It was proposed by DC that the PC would confirm with the Diocese of Ely that it is proceeding with the compulsory purchase order (CPO) on the land at Horseheath Road and the proposal was seconded by AW. All agreed.

The reissued report from a meeting with the Diocese on 8<sup>th</sup> January 2015 was noted. A report on a recent telephone conversation between the chairman and the Diocese was also noted.

PR had sent a report which had been circulated before the meeting and this was noted.

SH added that the meeting had been informative and that the Linton allotment association is already liaising with Cllr Paul Poulter regarding its business plan. An updated plan would be submitted to the PC in the near future. Cllr Batchelor confirmed that SCDC would scrutinise all documents submitted for the CPO and that LPC should try to ensure that all documents submitted would withstand such scrutiny.

It was proposed by GP that the PC would pay for the soil tests which are needed to confirm that the land is suitable for allotment use. The proposal was seconded by MM. Councillors voted eight in favour and one against and the proposal was carried.

**Tree matters:** BW had sent a report which had been circulated before the meeting and this was noted. It was agreed that quotations would be obtained to work on trees on the recreation ground which had been highlighted by the sports teams which use the grounds.

It was agreed that the PC’s former tree warden, Susan Anderson, should be recognised for the considerable amount of work she had done on behalf of the village for over 34 years. The clerk will send more details to Cllr Batchelor so that he can investigate how this might be done. The chairman will investigate other honours.

It was agreed that BW would deal directly with SCDC and Dr McKenna regarding Dr McKenna’s tree works application.

**Cemetery matters:** EB/BW had sent a report which had been circulated before the meeting and this was noted. It was proposed by BW that all repairs and maintenance noted in the report should be carried out and the proposal was seconded by AS. All agreed.

Councillors will be meeting Esther Cornell to discuss plans for the war memorial.

**Traffic matters:** PR and BW are working on traffic data and how this might be useful to the PC.

It was agreed to prioritise items on the PC’s list of issues to raise with CCC and to write to them about these.

Cambridgeshire Constabulary regarding parking issues. DC had sent a report which had been circulated before the meeting and this was noted. It was proposed by BM that the PC would

move forward with plans to part fund employment of a PCSO, at the cost of £1,000 for a six month period, to enforce parking regulations in the village and the proposal was seconded by BW. Councillors voted nine in favour, one against and one abstention and the proposal was carried.

**SCDC parish planning forum meeting 15<sup>th</sup> July 2015:** EB/BW had sent a report which had been circulated before the meeting and this was noted. It was agreed to ask Cllr Paul Richardson to investigate which buildings might be nominated as Assets of Community Value.

It was noted that some Local Plans have been revoked. Cllr Batchelor was asked if he thought it was possible for the PC to ask for the St Edmundsbury/Haverhill Local Plan to be revoked on grounds of lack of sustainability. Cllr Batchelor will make enquiries on this and feedback to the PC.

**Consideration of correspondence received:** Linton health centre regarding a merger with Sawston medical practice: Noted.

CCC regarding the Local Highway Improvement Initiative 2016: It was agreed that the PC would submit a grant application and the traffic working group (TWG) will consider new ideas for projects at its next meeting. The Disability Access and Safety submissions had been achieved or would be progressed by LPC. Councillors should send any new ideas they have to the clerk for forwarding to the TWG.

DC left the meeting at 9:15pm.

Mr & Mrs Saunders regarding the tree overhanging their property from cemetery: BW is meeting with Mr & Mrs Saunders next week and will report back to the next meeting.

CCC regarding the street lighting administration charge increase: Noted.

CCC regarding Connecting Cambridgeshire - fibre broadband: Noted.

Honest Employment Law Practice regarding the Certificate of Achievement Award: The chairman thanked the clerk for her work in ensuring that the PC is fulfilling its responsibilities regarding human resources.

CCC regarding the draft update to Rights of Way Improvement Plan – consultation: The Rights of Way group will look at this and feedback to the next meeting.

Local Council Public Advisory Service regarding training courses: It was proposed by AW that four delegates would attend the course ‘Writing Effective Responses to Planning Application Consultations’ at a cost of £25 per delegate, and the proposal was seconded by BM. All agreed.

It was proposed by AW to hold a bespoke course here in Linton on ‘Understanding Planning’ at a cost of £110 and the proposal was seconded by BC. All agreed. This course would be open to all councillors to attend.

Bidwells regarding the Environment Impact Assessment screening opinion on Bartlow Road: Noted.

**Note: Copies of the full minutes, reports and documents referred to above can be inspected at the parish council office.**

**LINTON PARISH COUNCIL**  
The Village Hall, Coles Lane, Linton,  
Cambridge CB21 4JS **Tel:** 891001  
Clerk to the council – Mrs Sue Parry  
Interim Clerk to the council – Mrs Marilyn Strand  
**Email:** [lintonpc@btconnect.com](mailto:lintonpc@btconnect.com)  
**Website:** [www.lintoncambridgeshire-pc.gov.uk](http://www.lintoncambridgeshire-pc.gov.uk)  
**Facebook:** [www.facebook.com/lintonpc](http://www.facebook.com/lintonpc)  
**Office open: Monday, Tuesday, Wednesday and Friday 9am – 12noon, closed on a Thursday.**  
*Or by appointment*  
Dates for full council meetings:  
15<sup>th</sup> October and 19<sup>th</sup> November 2015  
All meetings held at the Cathodeon Centre  
commencing at 7.30pm



**The Dog & Duck**  
63 High Street, Linton  
**Tel: 01223 890349**  
Pub & Restaurant  
Open All Day, Every Day

Idyllic Riverside Thatched Pub and Restaurant.  
Hearty Home-Made Pub Food.  
Be Assured a Fantastic Welcome and a Perfect Pint!!

**Live Jazz - 1<sup>st</sup> Sunday of every month 3pm-5:30pm**

**Fish and Chips Special on Wednesday £5.95**  
Sunday Roast

[www.facebook.com/thedogandducklinton](http://www.facebook.com/thedogandducklinton)

**Linton|Cabs**



**Pre-book only Linton based taxi service**

**Airports - Train Stations - Local Travel**

**Linton|Cabs**

**Tel: 07958 657300 / 01223 890965**  
**Email: [lintoncabs@btinternet.com](mailto:lintoncabs@btinternet.com)**

Carpentry, Plumbing, Tiling  
Door/Window Replacement  
Kitchen/Bathroom Refitting

Fencing & Decking  
Painting/Decorating  
Flat Pack assembly

Property Maintenance

**Steve Jackson**

[stevejacksonltd@hotmail.co.uk](mailto:stevejacksonltd@hotmail.co.uk)

Aerial Upgrades & installations  
Satellite dishes installed

Steve Jackson  
Office 01223 893896  
Mobile 07963 854653

**KJL Roofing**

All roofing repairs, lead-work, renewal of pitched or flat roofs

New guttering, repairs/unblocking

Free estimates before any work commenced

25 years + Experience

**Tel: 01223 892542**  
**Mob: 07958 618440**

**Neil Claxton**

Painting & Decorating

Interior/Exterior

Rooms Emulsioned from £120

**FREE ESTIMATES**

**Tel: 01223 893487**  
**Mobile: 07724073045**

e-mail: [n.claxton925@btinternet.com](mailto:n.claxton925@btinternet.com)

*The Crown Inn, Linton*

*freshly prepared & assembled*

**Exciting new Summer Menu to complement the fresh 10in Pizza’s handmade in our own in our Pizza Oven.**

**10% discount on takeaway Pizza’s**

**[www.crownatlinton.co.uk](http://www.crownatlinton.co.uk)**  
**11, High Street, Linton, Cambs Tel 01223 891759**

**TIM PHILLIPS & Co.**

**Accountants**

Established 1991

Independent, specialist service for:

**Small Business • Self Assessment**

**Personal Taxation**

Free initial consultation – no obligation

**EASY, FREE PARKING**

Copley Hill Business Park, Cambridge Rd., Babraham

Off A1307 between Wandlebury and Babraham

**Tel: 01223 830044. [www.tpaccounts.co.uk](http://www.tpaccounts.co.uk)**