

**VILLAGE HALL
Renaming Ceremony
Saturday 2nd October
10.00-12.00
Please come**

Over 2,200 copies
distributed free
in Linton,
Hildersham,
Hadstock &
Bartlow

THE LINTON NEWS

www.linton.info

**October
2004**
Vol. 18 N° 7
Publication Date
Monday 4th October

E & E PLUMRIDGE
Design & Print
41 High Street
Linton
01223 891407

Established 1987

ROLLERCOASTER RIDE TO LIBRARY TRIUMPH



Some of the 43 successful children with their medals and certificates

Picture by Roger Lapwood

AN amazing forty three children completed the Reading Rollercoaster challenge at Linton library during the summer holidays. They each read six books and some

of them wrote reviews or drew pictures, which have been put into a scrapbook.

Councillor Terry Bear did an excellent job of presenting medals and certificates and the

library service is very grateful to him. I would also like to thank all the mums and dads who encouraged their children.

A big thank you to everyone who took part and made

this year's Rollercoaster such a great success for Linton library.

Linda Pearson
Linton Library
892227

A NOVEMBER SPECTACLE

YES, it's here again – the 2004 Linton fireworks display will be taking place on Saturday 6th November, and to make it the usual outstanding success we will need your help.

For those of you new to the village, this will be our 15th Linton firework display. Over the past 14 years we have raised a staggering £65,600 which has been split between the Infants school, Linton Heights junior school and Linton Village College, thus benefiting all the children in the village.

More than 4,000 people regularly attend this major village event and enjoy a safe, well organised and spectacular firework display. This year we are again, very kindly supported by Cam Grain who have since 1996 generously donated £7,000 along with time and effort to help produce one of the biggest displays locally.

The event takes place on the Infant school playing field, with admission commencing at 6pm. The bonfire will be lit at 6.45pm and the fireworks will start as soon as everyone has gained entry.

As well as the spectacular fireworks there will be a giant bonfire, mega Bar-B-Q and Glo toys. Another regular feature is the guy competition with the number of entries growing each year. These include both traditional guys and some very fashion conscious fellows. Let's see if we can have more than ever this year.

Safety is always our prime consideration, therefore could Linton residents please leave their cars at home to minimise traffic congestion. It should also be remembered that no fireworks or alcohol may be brought into the event for

safety reasons – *and this includes sparklers.*

Advance tickets are available now from any of the three Linton schools, Sweet Talk News and Hale and Jacobs in Linton, Balsham and Linton post offices and the farm shop at Hill Farm, Castle Camps. They will also be for sale on the gate on the evening. Family tickets before the event are the best way to buy but individual tickets are also available.

As always we could use volunteers to help. Please let us know if you are able to lend a hand or maybe you would like join our friendly committee. Let us know. Help is especially needed between midday and 4pm on 6th November.

With the ever increasing popularity of the event and the constant need to regard safety as our number one priority, we

may need to restrict the amount of material accepted for the bonfire. Therefore any paper and card will only be accepted up to 10am on the day and other material until 12noon. The decision whether or not to accept material will be at the organisers' discretion on the day, or contact Peter Thomas in advance on 892700.

Only supervised children will be allowed onto the field during the day of the display. The setting up of the display and the building of the bonfire is a complex task where safety is our main concern. Much equipment is being used and moved about the site, making it a dangerous place.

For further information please contact:
Alan King, 9 Fairfield Way
894850
or visit our website at
www.linton-fireworks.org

Craft Fair.....Meadow School, Balsham 16th & 17th October.....10.30am to 4.30pm

Over 40 stalls of quality crafts including ● Children's clothes ● Cushions ● Wooden Toys ● Watercolours ● Woodturning ● Xmas Decorations ● Hats ● Salt Dough Items ● Picture Frames ● Jewellery ● Silk Painting ● Fossils & Minerals ● Aromatherapy ● Greetings Cards ● Needlecraft ● Ornamental Ironwork ● Decoupage ● Wooden Clocks ● Painted Glass and lots more!

Lots of new stalls this year!

Some great ideas for Christmas – don't miss it!
Homemade refreshments Entrance £1.00
Ample Free Parking Children & Senior Citizens 50p

LINTON DIARY

To guarantee entry into this diary please ensure that your event is written into the diary in the Post Office.

Details of items in **bold type** may be found elsewhere in this edition

Also send an email with your event details to
diary@linton.info, or use the form on www.linton.info

Weekly: Whist Drive, 7.30pm, Mondays Village Hall*
Weekly: Men's Keep Fit Club, 8pm, Mondays LVC
Weekly: Linton Chess Club, 7.30pm, Tuesdays Village Hall*
Weekly: WEA class, 10-11.30am, Tuesdays Hildersham Village Hall
Weekly: Story Time, 2.15-2.45pm, Tuesdays Library
Weekly: IT Club, 7pm, Tuesdays Cathodeon Centre
Weekly: Linton Radio Race Car Club, 6-10pm, Wednesdays VH
Weekly: Tots in Tow, 10-11.30am Wednesdays Village Hall*
Weekly: Rock Cafe, 1.30-3pm, Wednesdays Village Hall*
Weekly: Little Acorns, 10.00am-11.30am, Thursdays VH
Weekly: Carpet Bowls, 7.30pm, Thursdays Village Hall*
Weekly: Bridge Club, 7pm, Fridays Cathodeon Centre

October

2 Papworth Hospital Charity Dance, 7.30pm Junior School
2 **Mens' breakfast, 8.30am** Red Lion, Horseheath
2 Farmers' Market, 10am LVC
3 **Camera Club Outing, 9.30am** Coles Lane
5 **WI, 7.30pm** Village Hall*
6 Arts Forum Meeting, 7pm LVC
6 South Cambs housing, 10-11.30am Village Hall*
7 Luncheon Club, 12.15pm The Crown
9 **Flaxfields & Chalklands Jumble Sale, 10.30am** Village Hall*
9 **Linton Music Society Concert, 7.30pm** LVC
12 VIP Group, 2pm Chalklands
12 Linton Gardening Club AGM, 7.30pm Village Hall*
13 **Traidcraft, 10-11.30am & 1.30-3pm** Village Hall*
14 **Ladies Meeting, 7.30 for 7.45pm, Linton Free Church Hall**
16 **Children's Theatre, 3.30pm (tel 892400)** LVC
19 Historical Society AGM, 7.30pm Village Hall*
20 CAMTAD, 9am-12noon Health Centre
20 South Cambs housing, 1.30-3pm Village Hall*
22 ACE Fish & Chip Lunch, 12noon Village Hall*
23 **Digging Fun, 2-4pm** Back Road/Cemetery
24 **Digging Fun, 2-4pm** Back Road/Cemetery
26 **Half Term Arts Activities, 10am-12.30pm,** LVC
27 **Half Term Arts Activities, 10am-12.30pm,** LVC
27 Citizens Advice Bureau, 1.30-2.30pm Village Hall*
27 **Digging Fun, 10-11.30am & 1.30-3pm** Back Road/Cemetery
28 **Half Term Arts Activities, 10am-12.30pm** LVC
31 All Souls Service, 6pm S' Mary's
31 **Lighten Up, 5pm Infant School Hall & 7pm** URC hall

Refuse collection: 4th, 18th

Recycling collection: 11th, 25th

November

2 **WI, 7.30pm** Village Hall*
3 **Helping Hands AGM, 2.30pm** Village Hall*
4 Farmers' Market, 10am LVC
4 Luncheon Club, 12.15pm The Crown
6 Symonds House Autumn Fayre, 2pm Symonds House
6 **Fireworks' Display, 6pm** Infant School
7 **Camera Club Outing, 10.00am** Coles Lane
* The Social Centre is to be called the Village Hall from 2nd

October, see September parish matters for more information.

Library times: Monday Closed; Tuesday 10.30am-1pm, 2-5pm;
Wednesday 2-5pm, 6-8pm; Thursday Closed; Friday 10.30am-1pm, 2pm-5pm, 6-8pm; Saturday 10am-12noon.

JUMBLE FOR FLAXFIELDS

A JUMBLE Sale is being held at 10.30am on Saturday 9th October at the Village Hall. There will be something for everyone: tombola, cakes, a raffle, not forgetting the jumble.

The morning is being organised by Chalklands & Flaxfields Sheltered Housing. Please support this event.

Jacque Wilson, Flaxfields

HELPING HANDS AGM

LINTON and District Help Ling Hands Annual General Meeting will be held at 2.30pm on Wednesday November 3rd in the Village Hall.

M^{rs} Enid Bald from Age Concern will speak about the Village Warden Scheme.

Maureen Harper
891696

FIREWOOD

Seasoned hardwood logs
delivered in bulk bags

HOME FIRES LTD



Freephone 0845 601 8878

Tipper loads also available



**TONING, TANNING
& TALONS**

• Free trial on toning tables
• Beauty therapy
• Manicures, Pedicures

A & R PLASTERING

All aspects of plastering
undertaken:

**Plasterboarding
Rendering**

No job too small

19 years experience
Free estimates

Linton based: Mobile:
01223 890228 07957880738

BOOK-KEEPING SERVICES



*For all your
book-keeping
needs*

Fast friendly service

1 Paynes Meadow, Linton
Tel: 01223 897808
or 07778 358057
emma@westoe49.freemove.co.uk

FROM WHERE I'M SITTING

by TONY SMITH

CRASH! Bang! Wallop! autumn is arriving with what many call a nip. I call it freezing, as my illness means that the cold weather dictates what I do and where I go. These last few years a temperature of 60° Fahrenheit meant that it was too cold for me to go out. This year it is 70°, and temperatures under this mean that my poor old body seizes up. So with great reluctance I have decided to hibernate until next May. A little girl I met at the library recently was most confused by hibernation especially as she was trying to defeat all attempts by her mother to persuade her to put on her coat.

I did manage to get to the Haddenham steam rally this year, but the morning was very cold indeed and the wind seemed to be able to go right through me and out the other side. I looked at Sue, who by this time was wearing two coats, and I realised that no amount of fudge could pacify her this time. I asked her if we should go home, and she said it was 'Completely up to me', which always indicates that she has had enough and is putting up with things for my benefit. I tried to get up but I couldn't, which made Sue laugh. The wind was howling by now, and it was obviously time to go. We had only been there an hour and a half.

Mumbling and miserable, I mounted my scooter, my bottom lip bending downwards like a scolded schoolboy and turned the key. I swear dear reader that in that brief moment a miracle occurred!

The wind suddenly dropped and the sun came out and for the rest of the day all around the showground was cloudy, but the middle of the field was bathed in glorious sunshine.

I saw some of M' Smith's vintage vehicles and as always, I thank everyone involved who took the time and trouble to give all of us there a glimpse of a time we would never otherwise see; modern technology replacing the need for steam and mechanical genius.

I recently travelled up to Papworth Everard to attend a meeting of the Papworth Trust User Council. All the members of the committee are disabled, and it was decided by Phil, our chairman, that an assault on Linton is needed to see whether disabled people can get around our village, as it was agreed that having specially adapted disabled properties built is no good if the people are confined to them and have trouble getting out and about. So, if you see a number of wheelchair users grumbling and writing furiously, please don't be alarmed.

What started all of this was a report concerning the building of a new adapted bungalow in Flaxfields. A problem arises when a disabled or elderly person needs to go out of their immediate surroundings, and anyone living in Flaxfields will have problems doing this because of the dangerous nature of the pathways and lack of dropped kerbs.

On my travels, many people have commented on the growing number of mobility scooters travelling around and it is becoming obvious that there may be more mobility impaired people living in Linton nowadays, so I would like to ask if you could please let me know how many of you have trouble getting around the village. I have met around twenty people so far, which is nineteen more than a Council report suggested Linton had in 2003.

If access is a problem for you, please let me know. My telephone number is 894023, or drop a line to 15 Paynes Meadow, Linton, CB1 6JP, and then we can all try to bang our heads against the wall, instead of just me!

Well, last month, I was neither right nor wrong about the weather, but one word sums up the coming month - horrible! Please make sure your heating is working and that you have other forms of lighting and heating available to you in the event of a power cut, and please take a minute just to drop in on a neighbour to see if they need anything.

Keep warm, keep safe, and I'll see you all next month when I will have a controversial statement to make!

ARE YOU THE NEXT LEONARDO?

ATTENTION all artists and art-lovers! Linton, Sawston, Fulbourn and surrounding areas will be the focus of a major arts initiative over the coming months.

Whatever your interests, there will be something for you in the programme organised by Dan Schumann, arts development manager for the Sawston and Linton Broadening Education Partnership.

Firstly, there will be a Grand Arts Exhibition to showcase the talents of local amateur and professional artists. This takes place in Sawston Village College from 23rd-27th October and will be open from 10am-3pm. Entrance is free.

As part of the exhibition, there will be a 'Mile-Long Gallery' of art in the shop windows of Sawston High Street, so why not wander along and have a look?

Alongside the exhibition, there will be several free "taster" sessions in many art forms led by professional artists. This is a great chance to try something new - you never

know, you could be the next Leonardo! The sessions are from 10am on 23rd October, from 1pm on 24th October and from 11am on 26th October.

Secondly, 'Half Arted' - a series of half-term arts workshops for young people aged 10-16 will cover music, DJ-ing and stage fighting. These will take place in Sawston Village College, Linton Village College and Fulbourn Memorial Hall. The sessions will be from 26th-28th October and will run in Sawston from 10am-2.30pm, in Fulbourn from 1.30-4pm, and in Linton from 10am-12.30pm. There is a fee for these sessions.

Thirdly, a number of visits are planned by professional theatre companies, with the first by the Kosh theatre group to Sawston Village College on 7th October at 8pm with their production of Twentieth Century Girls, a combination of songs, dance, poetry and comedy to explore the last century through the eyes of two women.

Next, The Crazy Kitchen Crew comes to Linton Village

College at 3.30pm on 16th October with a piece of children's theatre about a kitchen that comes to life. Tickets are available from The Junction on 578000.

Following this is The Owl and the Pussycat at Fulbourn at 3.30pm on 23rd October in the Memorial Hall, an award-winning adaptation of Lear's poem and, again, tickets are available from The Junction.

A highlight of the whole arts programme will be a rare visit to Sawston Village College by the world-renowned Scottish band, Blazin' Fiddles. They are at Sawston for one night only at 7.30pm on 13th November. The show, described by BBC's Radio 2 as "absolutely mindblowing", will be a night not to be missed. Tickets are available and there will be a licensed bar.

Following Blazin' Fiddles is another visit from an award-winning company. This time it is Misfits Theatre visiting Linton Village College with their production of the comedy, Woman On The Verge of a

T Junction, a story of three women going through a life-changing experience. The performance will be at 8pm on 9th December.

The last piece of professional theatre is a Christmas favourite - Pinocchio at Sawston Village College at 11am and 2pm on 11th December. Tickets are available from The Junction.

Lastly, thanks to funding from the Film Council, South Cambridgeshire's very own film festival - MAMAL FEST - will take place from 18th-21st November with a film each day. The schedule so far is 7.30pm, 18th - Frankenstein (Cert 15); 7.30pm, 19th - Singing in the Rain (U); 7.30pm, 20th - Die Another Day (PG); and 1pm, 21st - James and the Giant Peach (U). The films will be shown in Sawston Youth and Community Centre (a former cinema).

If you want to find out more about any of the events or would like to book, call:

Dan Schumann
712414.

YMCA JOINS SCHEME TO HELP THE YOUNG HOMELESS

SOUTH Cambridgeshire District Council and Cambridge City Council are working with the YMCA to provide emergency accommodation for young people in need.

Following a pilot scheme, a five-year Service Level Agreement with the YMCA on Gonville Place in Cambridge has been drawn up to provide emergency bedspace for young homeless people in Cambridge and South Cambs.

Under the agreement, the two district councils have per-

manent use of a bedroom at the centre, which can be used to provide immediate accommodation for a young person who becomes homeless.

South Cambridgeshire District Council's homeless strategy has a focus on homelessness prevention. The council supports Cambridge and District Community Mediation Service in its work with young people. Mediators work to improve communication between young people, who are thinking of leaving home and their

parents or carers, to try to resolve problems and find solutions.

Councillor Liz Heazell, portfolio holder for housing, said, "We are extremely pleased to announce this five-year partnership with Cambridge City Council and the YMCA. The YMCA provides supported housing for young people and opportunities for them to develop new skills. It is a much better alternative to housing a single young homeless person in bed and break-

fast accommodation. Coupled with support available from Cambridge and District Community Mediation Service, this improves the service we offer to young homeless people or those at risk of becoming homeless."

For further information please contact:

Jo Fowler, communications officer at South Cambs District Council
01954 713289, mobile 07887 633640 or email joanne.fowler@scambs.gov.uk

FREE
COMPETITIVE
ESTIMATES

Watkins Joinery



- FITTED KITCHENS / BEDROOMS / WARDROBES
- CABINET MAKERS
- BESPOKE JOINERY
- DOORS / WINDOWS / STAIRS
- WOODEN FLOORING
- CONSERVATORIES
- EXTENSIONS / REFURBISHMENTS
- ALL WORK GUARANTEED

Tel.: 01223 890600 Mobile: 07802 885390
www.watkinsjoinery.freemove.co.uk

20 YEARS EXPERIENCE

INSURANCE WORK UNDERTAKEN

Gas Care



Your local CORGI Gas installer - 25 Years Experience

For all your domestic Plumbing, Heating and Gas Appliance Installation and Maintenance Requirements

Telephone: 01223 893686
Mobile: 07973 262776
e-mail: info@gascare.gb.com

**website: www.gascare.gb.com**



MALLYON & DONALDSON

Linton

Specialising in both Modern and Traditional building methods.

Tel: 01223 891267
Mob: 07941 220868

All contracts finished to a high standard.
Reliable service. Local references available.



THE KELVIN SCHOOL OF MOTORING

★ DOE, ADI and MIAM

16 BACK ROAD, LINTON

 **Cambridge 892263**

Ashdon House of Children

DAY NURSERY

188 Farm, Radwinter Road, Ashdon, Saffron Walden, Essex CB10 2ET

Open
8am to 6pm
daily,
51 weeks
per annum



Excellence
developed
through
14 years
experience
of childcare
& education

For further information and a copy of our prospectus
Please contact us on 01799 584004 alternatively, visit our website at:
www.ashdonhouseofchildren.co.uk



Wedding Photography

Special offer on mid week weddings Monday to Thursday

...on your very special day let the memories last and linger on...

Tel (01223) 892056

Julian's Photography

38 The Grove Linton Cambridge

A MEMBER OF THE SOCIETY OF WEDDING PHOTOGRAPHERS



The Dog & Duck

63 High Street, Linton, Cambs
Tel: 01223 891257
Email: dogandduck@hotmail.com
Website: www.dogandducklinton.co.uk

- Christmas menu lunchtime & evening from 1st to 24th December
- Boxing Day lunch menu
- New Year's Eve dinner menu
- New Year's Day lunchtime menu

Sorry no food Christmas Eve night, Christmas Day or Boxing Day

READERS WRITE

Post and email addresses and deadline for letters on page 6
Please note: All letters for publication must be supplied with a full name and address to enable us to check their authenticity. Any letters without these details will not be printed.

DO YOU CARE?

Dear Editor
May I be permitted to add my voice again to the clamour concerning the safety of and improvements to the A1307.

The accident statistics for this stretch of road between Hildersham and its junction with Horseheath Road are well documented and the efficiency of the options for improving both ease of access to the road and safety when crossing it have been (and I suspect will continue to be) debated at length. There still seems little hope of a solution in the foreseeable future.

We are told that a roundabout at Bartlow Road or traffic lights at the top of the High Street would be too expensive yet there seems to be enough money to alter the road layout or construct a roundabout to

accommodate the planned changes to the village college. Furthermore, I note that there is sufficient money in one of the road improvement funds to provide a lengthy piece of cycleway between Sawston and Hinxtun, a particularly notorious accident zone?!!

Perhaps, if common sense has any place in our increasingly bureaucratic society and we, the villagers of Linton, could agree a common approach, it may be possible to persuade those responsible to do something.

It might also be possible to bring home to drivers on the A1307 that, according to the police and ROSPA, most accidents are caused by poor driving *not* poor roads.

C.J.Foster,
Emsons Close

IT PAYS TO BE CAUTIOUS

Dear Editor

As it is Monday and bin day I thought that this incident should be brought to the notice of residents in Linton and everywhere.

As the green box was emptied and another one returned to us, I noticed that it contained someone else's credit card till receipt, complete with their number and signature. I am sure that if this got into the wrong hands fraud could be committed.

Are people aware enough about how to dispose of personal information safely? Name and address supplied

A GOOD HARVEST

PRESIDENT Tricia Lewis welcomed everyone, especially our three visitors. Posies were distributed and minutes and reports were read.

Joan Pearman reported on the Village Hall committee. The renaming will be at 10am-12noon on 2nd October, all groups using the hall are invited to showcase their organisation and activities. Entertainment will be provided for the children. The WI will provide a cake stall and help with this is needed.

Carol Todd thanked all who provided cakes for the Alzheimer's Group: £851 was raised.

The WI quiz is on 5th November, names are needed for a second team.

Boards were circulated for forthcoming outings, walks and the Autumn Council Meeting on 25th October.

The harvest supper was provided by members and was thoroughly enjoyed. As usual an excellent spread of desserts was produced by our committee. Wonderful food and good company made for a pleasant evening which was enjoyed by all. Joan Pearman read an amusing poem on "Dusting" and Tricia Lewis read John Betjeman's "Diary of a Church Mouse".

The next meeting is our open meeting, so if you are free on 5th October please join us. Our speaker will be D'Ian Calder who will give a talk on Forensic Medicine.

There will be a trading stall.

Tricia Lewis, 893609

WACKY RACERS NET £4000 FOR CHARITY



One of this year's entries en route

Picture by Roger Lapwood

A MASSIVE £4,000 has been raised this year through the increasingly popular Wacky Races event organised by The Crown Inn. Joel Palmer from The Crown will present two huge cheques for just over £2,000 each to this year's charities - the Linton Area Pool Project and Linton Infants' PSA. This brings the total raised for Linton charities over the last three years to almost £9,000.

The huge increase in money raised was partly due to the extremely generous support from local businesses Boyz 2

Men, Crofton Engineering, McKenzie & Hayward, Eric Foster from STS Tyres and continued sponsorship from The Crown. There were also some amazing amounts raised by the runners and a special mention should go to the Thunderbird Team (George Dye & Simon Pettit) and the Paramaniacs who between them raised over £1,000, an unbelievable amount which is greatly appreciated. It takes a lot of hard work and determination to get the pledges let alone collect it in at the end. Well done everyone. And also

a big thank you to Ann Lavery who organises the collection of sponsorship money and puts in a lot of time before, during and after the event.

The event itself is great fun especially if you are running. Although it seems like a lot of work to get a cart and running partner together, it is a hilarious experience and much better than just spectating. So go on, next year, "*Don't just sit there [Mutley], do something*"!!! and help raise even more money for Linton charities.

Joel and Louise 891759

COLLEGES OF CAMBRIDGE

AT the 20th AGM of the society, the present officers and committee were re-elected. Garth Collard, chairman, told over 60 members that he was hoping to hold another exhibition of photographs of old Linton next summer, and he would also be leading another walk around the village. He is also writing a history of the historic buildings in Linton, (of which Linton can boast as having more than any other village) and if anyone living in such a house would like him to visit and discuss its history, please get in touch with him.

Our speaker, Mary Goddin is a Blue Badge guide in Cambridge, the botanic gardens and Ely, but her talk on Cambridge Colleges had to be limited to the first few of the 31 due to time. A wealth of history was imparted, with the help of slides, of the beautiful architecture of these famous build-

ings. The University started around 1209 when students from Oxford fled that city after a fracas in which a murder had occurred. On arriving in Cambridge they found nowhere to stay apart from old St John's hospital, the town being monastic and the monks took them in. Colleges were built alongside churches until their own Chapels could be built.

In 1284 Peterhouse was the first college to be founded.

Clare College was started by Elizabeth de Clare, a cousin of Edward III in 1326. Clare bridge is the only remaining original bridge in the town, after Oliver Cromwell destroyed the others, and was the only access into the town after fire had destroyed the buildings.

In 1347 Pembroke was founded by the wife of the Earl of Pembroke, who was French and built it for French students. It has the oldest remaining building in Cambridge with its original chapel now a library.

1348 saw Gonville founded, and then Dr Caius, physician to Elizabeth I and Edward became involved and moved it from its original site, renaming it Gonville and Caius.

1350 saw Trinity Hall founded, the smallest and most compact college with its Elizabethan library being the oldest library.

1352 and Corpus Christie was founded by two guilds for the townspeople but after the riots in 1381, apart from old court, the buildings were destroyed and the present ones are 19th century.

1441 saw King's College founded by Henry VI and his wife, Margaret d'Anjou founded Queens' College, which was continued by Elizabeth Woodville. The Chapel took 100 years to finish and is one of the most impressive chapels in the country (if not the world).

Other buildings touched upon were Senate House with its 14th Century buildings. Great St Mary's Church was the University and Parish Church, with two organs, one used for the University and one for the Parish. The present church was built at the same time as King's College chapel, although there had been a previous church on the site. St Benet's is the oldest church with an Anglo Saxon tower St Botolph's has its original rood screen having managed to escape the ravages of Oliver Cromwell. A bookshop has always stood on the site of the present University Bookshop and used by millions of scholars over the years. The list of College alumni is long and distinguished.

A warm vote of thanks was given by Clare Neville and it is hoped that a future date will be set to hear the history of the rest of the colleges.

The meeting ended with wine and nibbles and at the next meeting on 19th October, Neil Lanham will tell of his life as an Auctioneer. All are welcome.

Joan Pearman 890746

THE VILLAGE PHARMACY
OPEN 9-1 & 2.15-6.30
Monday to Friday
9-1 Saturday
☎ 892018

K & N CLAXTON
Painters & Decorators
Interior & Exterior
Free Estimates
Tel: (01223) 892190
(01223) 893487
07721 934553
k.n.claxton@drakecom.com
Linton Based

POINT CONTACT AT THE GRIP
Hygiene products business to business
For Clean plates, Clean glasses,
Clean prep. surfaces, Clean toilets
Economically, Purely, simply biologically
Many choices from a range of detergents -
degreasers - descalers - toilet rolls -
kitchen rolls - powders and liquids.
Daily deliveries- monthly accounts- c.o.d.
Cash and Collect
Telephone **01223 894000**

01223 890 965
THE ONLY NUMBER YOU WILL EVER NEED
LINTON CABS
"THERES ONLY ONE LINTON CABS"

DRIVES & PATIOS **HOUSE EXTENSIONS**

HOME IMPROVEMENTS **PAINTING DECORATING**
A & T Groundworks Ltd
FRIENDLY SERVICE LARGE & MINI DIGGERS FOR HIRE
Call Ashley on 01799-520298 - Mobile 07803745637

STEVE HALL GARDEN SERVICES
CALL FOR HELP IN YOUR GARDEN
TEL 01279 817739
MOBILE 07778 049063

DG DECOR PAINTERS & DECORATORS
● Interior and exterior
● Free quotes
● Many Linton references

Tel: 01440 764919
Mobile: 07971 603557

STEVE JACKSON SERVICE ENGINEER
All domestic appliance repairs,
15 years industry experience
Very reasonable rates
Quick & reliable service
Tele: -
Linton 01223 893896
Mobile 07963 854653

McKenzie & Haywards
MHG Garage
MOT while you wait.
Servicing,
Collection & Delivery Service
McKenzie & Haywards Garage
Units 3/4 Lintech Court
The Grip Industrial Estate
Linton, Cambridge, CB1 6XN
Tel: 01223 894140
Fax: 01223 890035
E-mail: murray@mckenzie-haywards.freemove.co.uk

BLERIOT, BOXKITES AND BICYCLES



A vintage plane captivates Roger Lapwood at Old Warden

Picture by Mike Crofts

A PERFECT summer day greeted the Camera Club on their awayday to the historic aircraft and vintage vehicle collection at Old Warden near Biggleswade in Bedfordshire on 5th September. This particular day was the biggest show of the year for the Shuttleworth Collection, when virtually the entire stock of exhibits is either pedalled, driven or flown in front of visitors.

The collection houses cycles, including the 1860 'Boneshaker' and the four

wheel 1877 Quadricycle. Cars from 1898, motorcycles, tractors and a traction engine were all paraded in front of us, with their drivers and passengers suitably dressed for the period.

The aircraft were the main draw, however, with models from the early days of aviation through to the Second World War and later. The photograph shows Roger Lapwood with an original 1909 Bleriot monoplane and in the background a replica of a 1910 Bristol Boxkite originally built for the film 'Those Magnificent Men

in their Flying Machines'.

The 3rd October awayday is to the picturesque villages of Lavenham and Kersey, meeting at Coles Lane car park at 9.30am. On 7th November we will be going to Cambridge leaving at 10am.

We always welcome new members so please do come and join us. If you want to find out more please contact John Keeble 894948 or jkebble@clara.net or look at the club website www.camclub.info Mike Crofts 893619

WE REMEMBER OUR LOVED ONES

ONCE again we will be gathering on All Souls' Day, Sunday 31st October, for a service at 6pm in St Mary's when we will remember and give thanks for our loved ones who have died. The service is open to all, and everyone is warmly invited.

We will come together to remember, to pray and to sing hymns. Candles of remembrance will be lit during the service, and you will be invited to come to the altar to receive communion or a blessing.

During our prayers the names of those who have died in Linton in the past year will be read out. Please feel free to contact Lesley Gore beforehand if you would specially like her to add the name of someone whom you have loved and lost at an earlier time or in some other place. Lesley's address is: 38 Symond's Lane, Linton CB1 6HY.

There will be some time to talk after the service when refreshments will be served. Lesley Gore 891970

NEW WEBSITE PAVES THE WAY TO A SAFER COMMUNITY

YOU may be aware that the Cambridgeshire Constabulary is having to make a budgetary saving and is reviewing roles within the organisation. The delivery of Community Safety (as well as other functions) across the force is being reviewed. The role of Community Contact Officer (CCO) will form part of the review.

Due to the uncertainty, the CCO for Sawston Sector Police has resigned and left on 4th September. Because of this there will be no crime reports or newsletters until the role has been reviewed and the post filled.

However, a new website has been launched which will give you all the information you have had from the CCO – and more quickly. Please could I stress to Neighbourhood Watch cluster co-ordinators that all your co-ordinators without access to the website be given an update on relevant crimes and information.

The following is a brief summary of the website – in a question and answer format.

How will Cam Community benefit the local community?

It will empower local residents to look at incidents within their area and provide them with the knowledge to protect themselves against crime, by providing crime prevention advice.

Anyone can now search by post code, street name or village or town, between specified dates, to look at crime which has happened in their area. It gives brief details such as the specific beat code, a reference, time, district and modus operandi etc.

There is also information on local police stations, including their contact details and opening times. People will also have information on their local police officers as well as now being able to email them.

What if I don't know which sector I live in?

You don't need to know which sector or district you live in. You can now search by your

village, town or post code to find your sector.

Will the emails go directly to the police officers?

When an email is sent to a specific police officer, this is first directed to the manager of the E-Policing Unit at Force Headquarters, who accesses the information and immediately redirects the email to the most appropriate police officer or department to action. This prevents information being held on the wrong person's email account and allows the right people to have access to the right information quickly.

Will my personal information be put on the website if I am a victim of crime?

No personal information will be placed on the force website. When a crime is committed, the CSU will go through that information, taking out all sensitive or personal details before it is transferred onto the web page.

For a full copy of this article please see: www.linton.info or www.cambs.police.uk

ALL AGES CATERED FOR

SUSAN Bowden Pickstop is the producer of the Sunday Programme on Radio Cambridge. She is coming along to the Free Church Ladies group, Activate to talk about her life and work. The group meets regularly and many friendships have been made and renewed.

If you haven't been before do come along and be sure of a warm welcome. The meeting will be Thursday 14th October

at 7.30pm for 7.45pm and refreshments will be served.

For further details please contact: Ann 01799 584104.

The men of Linton Free church have invited Daniel Cousins to come along to make a presentation of his art at a breakfast meeting at 8.30am on Saturday 2nd October at the Red Lion, Horseheath. Come along early birds and enjoy a new experience.

Activities for children and youth on Sunday 31st October, led by all the churches in Linton. See page 6. For further details please contact: Keith on 01799 584104

Linton Free Church in Horn Lane meets every Sunday morning at 10.30am where there is a crèche and a full programme of activities for children of all ages.

Rev Alex Jacob 892991

LOG ON TO CORNERSTONE

CORNERSTONE Community Church is pleased to announce the launch of their new website. Split into three areas, the site contains information about Cornerstone Church, details of The Family Resource Centre and has an area on Christian life generally in and around Linton.

There is a calendar

available from our homepage showing all Cornerstone, Resource Centre (including South Cambs and Citizens Advice) and local Christian events. With links to The Linton News and Linton.info we hope you will find the new site both interesting and informative.

Tracey Clayton 894656 www.lintoncornerstone.org

Need an Electrician?

Phone Joe Blakeley

01638 572014
or 07960 592242

Fully qualified
electrician and
Testing Engineer

Television & Video Sales & Service

JC TOURNANT & SONS
47 High St, Linton
☎ 891321

HANDYMAN and general builder

From conversions to plastering, renovations to tiling and decorating-

No job too small

Tel: 01223 890769
Mobile 07813 070369

A.J. COPELAND & CO.

Chartered Accountants, Linton

Audit, Accountancy, Tax and Consultancy Services
for Business and Individuals

Computerised Self Assessment Tax Return Service



For FREE initial consultation phone
01799 506602

J-S
Uni-sex Hairdressers
12 High Street Linton Cambridge
Telephone (01223) 892648
Sarah & Jo From local Area would like to welcome You.
Mon Closed
Tues 9-6 Wed 10-7 Thurs 9-6 Fri 8.30-5
Saturday 8-1
O.A.P. Rates Tuesday & Thursday

BOYZ 2 MEN BARBER SHOP
OPENING HOURS
Monday/Tuesday 8.30am - 6.00pm
Wednesday 9.00am - 5.00pm
Thursday/Friday 8.30am - 8.00pm
Saturday 8.00am - 4.00pm
Special rates for Senior Citizens
Monday - Friday
113A High Street
Linton Cambridge
Tel: 01223 894481

GEOFF NORBY
Reg No. 34107
PLUMBING & HEATING ENGINEER - Estd. 1966
All aspects of Central Heating and Plumbing
Boiler Service & Maintenance
Bathroom Suites & Power Showers
Kitchen Installations - Tap Washers
Telephone 01223 892311
Mobile 07885 068047

BILLSON Established 1930
Opticians
• Extensive Range of Frames & Lenses
• Full Private & NHS Work
• Varifocal/Multifocal Specialist
All types of monthly/daily contact lens supplies
Open Monday to Friday, 9.00-12.30, 1.30-5.00
55 High Street, LINTON, CB1 6HS
Appointments: 01223 891333

Problems with your health? Stressed? Feeling run down?
Reflexology
Reflexology is the answer for many women and may help you. It will relax and rebalance your body.
Women
June Keeble
M.BSR. BC.MA.
NFSH Healer
offers you a caring, professional service
Back conditions, Migraine Sinus, Asthma, Allergies, Stress and Tension, Bronchitis, Digestive problems, IBS, Constipation, Kidney and Bladder problems, Depression, High blood pressure, Lethargy, Circulation problems, M.E., Menopausal problems, Run down feeling
This is not a full list – just a brief guide
Appointments, inquiries
☎ 894948 (Linton)

A CAMBRIDGE TO COLCHESTER RAILWAY

THERE is a lot of local interest in the prospect of re-opening a railway service between Colchester and Cambridge, running along the old railway line through Linton. There is no doubt that the closure of the line by D^r Beeching in the 1960s was very short-sighted. The Cambridge to Colchester Railway Development Company Ltd. has done much to promote the idea and show that there is a lot of public support for reopening of the railway. S^t Edmundsbury District Council in Suffolk has invested money in a report on the feasibility of the railway line. Cambridgeshire councils are less enthusiastic about the project. The number of homes in the Cambridge area is due to expand by 50% over the next decade or so. It is estimated that the infrastructure (roads, schools, hospitals, electricity, water, etc.) to support this massive development will cost £2 billion. It is expected that much of the money for the infrastructure will come from a levy of £10-£15 thousand on each new home. Local councils have a massive task to pay for and help build all the infrastructure already planned. A new railway through Linton would be at the bottom of a very long list of projects. However, most of the money for transport projects has to come from central government. The government is already committed to widening the A14 at an estimated cost of £450 million and a new guided busway between S^t Ives and Cambridge at a cost of £65 million. A new railway between Colchester and Cambridge would also have to be funded by central government. Local councils cannot raise large sums of money from council tax and development gain from new homes is already earmarked for existing projects. Before the government pays for a new road or railway, there has to be a cost-benefit analysis of the scheme. If a study shows that fare income or savings in motorists' time or reduction in accidents is greater than the cost of the scheme, then the government is likely to provide the capital cost. The cost of the proposed railway line is unknown at the moment. However, as a comparison, the cost of reopening the S^t Ives to Cambridge railway line was estimated at more than £80 million even though the land is already in public ownership, the ballast and lines are still in place and there are no bridges to build. In contrast, to reopen the railway line from Haverhill to Cambridge (a similar distance), it would be necessary to re-purchase the land from multiple land owners, re-grade the route and build a new bridge over the A11. The cost is likely to be more than £100 million. Three different studies concluded that a S^t Ives/Cambridge railway would not make enough money to justify the cost. On this comparison, Cambridgeshire County Council has concluded that the government will not pay to reopen the Cambridge to Colchester railway. Councils must prioritise their work ruthlessly. There are simply not enough staff or funds to consider a Cambridge to Colchester railway which is unlikely to come to fruition in the foreseeable future. Terry Bear 892656

BRING A SPADE AND JOIN THE FUN

TO celebrate National Parents' Week, the Family Resource Centre is planning to transform the old dumping ground at the edge of the cemetery (along Back Road where it joins Chalklands). The plan, come rain or shine, is as follows: Between 2-4pm Saturday 23rd October come and fill a bin bag with grass and weeds. Appropriate clothing needs to be worn as there are lots of stinging nettles. Between 2-4pm Sunday 24th October bring your spades, forks and wellies ready to get digging. Between 10-11.30am and 1.30-3pm on Wednesday 27th October and the transformation begins with the planting of bushes and bulbs. Volunteers of all ages are invited to come along and join in the fun. Donations of plants, bulbs and bushes welcome. Tracey Clayton 894656 www.lintoncornerstone.org

SECOND TO NONE

THE Band of the Coldstream Guards is world famous. Appearing regularly at the Changing of the Guard and the Remembrance Parade at the Cenotaph, the Coldstream Regimental Band reflects its motto - "Nulli Secundus" - "Second to None". On Monday 15th November, the Band visits Cambridge for the annual free concert, "Celebrating the Classics", organised by South Cambridgeshire District Council. The band will be performing for school children in the morning and, if you're over 60 and live in one of South Cambridgeshire's 102 villages, you could see them for free in the afternoon. The afternoon concert for the over 60s, at 2.30pm at the Corn Exchange, features both brass and wind instruments and will include fanfares, overtures, a solo piece and selections from My Fair Lady. If you are unable to make the afternoon, do not despair! The band is performing in a public concert on the evening of 15th November at the Corn Exchange. The programme is varied but will finish with a glorious version of Elgar's Nimrod and a Regimental March. Tickets are available from the Corn Exchange box office on 357851. For further information please contact: Jo Fowler 01954 713289, mobile 07887 633640 or email joanne.fowler@scambs.gov.uk

ANOTHER WARTIME STORY FROM BARBARA WALKER

DURING the early part of DWW2, in 1940, we had the odd German plane fly over in the late evenings. I would watch from my bedroom window in the High Street in Linton. There was a Searchlight Battery stationed at Bartlow and the beams of the searchlights would make a cross in the sky and you could catch sight of the plane quite clearly. German planes had a certain noise, a stuttering sound, being a Heinkel by name I believe. One evening when I was tucked up in bed, there was a terrific bang followed by other such noises. I was almost thrown out of bed and, of course the family all awoke. My father at that time was not on his ARP duty. Apparently, a German plane had unloaded his stick of bombs across Linton. The first one had hit our neighbour, M^{rs} George and family's house, demolished their kitchen, knocked the wall down that divided us, bricks had been thrown in our back door, not forgetting the shrapnel that came into my bedroom through dislodged tiles. They were only small bombs that fell throughout Linton and luckily no-one was killed or injured. Nevertheless we had to be evacuated to the other side of the road to the home of Miss Moore who was the headmistress at the Linton infants' school. She was a kindly person and she made us all comfortable. Apparently, they thought there was an unexploded bomb in our outside toilet! However we were allowed to go home the next day as they didn't find another bomb. I remember this well as we all had to do some clearing up, more so for M^r and M^{rs} George. All I can say is that it is a good job they were only small bombs; goodness knows what would have happened if they had been the large ones. I don't suppose I would be telling you this wartime story. Mike Crofts 893619



Roses Beauty Salon

LINTON

Facials, Electrolysis, Waxing, Manicures, Aromatherapy, Massage, Eyelash Tinting, Make-Up, Colour analysis, Ear Piercing, Sunbed etc.

Tel Carol 893590

BABTAC, ITEC

LIGHTEN UP

DON'T miss.....

The Linton churches together alternative All Hallow's Eve party "Lighten Up!" on Sunday 31st October.

Children aged 5 to 11 are invited to Linton infants school hall from 5pm to 7pm.


Youth (11 plus) can come to the URC hall, Horn Lane from 7pm to 9pm.

All are welcome.

Watch for posters with more information this month.

Sarah Thorne 891952

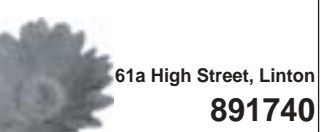
your local florist



Flowers

SARAH CHAMBERLAIN

delivering worldwide



61a High Street, Linton

891740

GARDENERS NEW SEASON

THE gardening club's AGM will be held at 7.30pm on Tuesday 12th October, followed by a produce stall for which donations will be very welcome.

During the season there will be talks entitled 'Photography - luck or art form?' by Andy Hanson, 'Courageous gardening' by Stephen Anderton, 'The wonderful world of willow' by Sandra Barker, 'From wheat to vine' by Susan Lindsell and 'Flower shows from the past' by Garth Collard. The December social evening will include a Christmas floral demonstration by Margaret Holmes.

Do please join us.

Gloria Fidler 891800

ProClean

When You Want The Best....

Contract Office Cleaning

Mobile Valeting Service

Carpet Cleaning

Upholstery Cleaning

Cleaning of Patios & Paths

890433 or 0777 375 8355

MS Landscaping

6 Arundel Walk

Haverhill

Suffolk

CB9 9BG

Tel: 01440 712260

Mobile: 07990 940227



Patios, Drives, Paving

All Bricklaying, Turfing

Fencing/Gates

Pergolas and repairs

BED & BREAKFAST

SPRINGFIELD HOUSE

14/16 Horn Lane, Linton

Regency house near Church, River views from bedrooms & guest lounge.

Tel 01223 891383

JUSTIN PEARSON

Reliable, High Quality

Painter & Decorator

for Interiors & Exteriors

Free Estimates

Tel 01223 565310

Mobile 0775 2469130

PEST CONTROL SERVICES

RABBITS, RATS, MICE, MOLES & INSECTS

CONTACT R. DANIELS

Tel: 01223 290570

Mobile: 07773682676

Students 20% off

THE ROOM

37 Bartlow Road, Linton

Tel: Pippa (01223) 890890

Special Kids Prices

OPENING TIMES

Mon	9-5 pm	Senior Citizens
Tues	9-5 pm	Monday & Tuesday
Wed	9-7 pm	
Thurs	9-7 pm	Late opening until 7 pm on
Fri	9-5 pm	Wednesday & Thursday
Sat	9-3 pm	



CASLES

INDEPENDENT ESTATE AGENTS

THE ONLY LINTON AGENT

"Offering quality homes in Cambridgeshire & Suffolk"

Telephone: 01223 563563 or 01440 708708

Offices @ Great Shelford, Cherry Hinton, Linton, Haverhill & Ely



Chippy's

Traditional Fish & Chips

Now in Linton every Thursday

We look forward to seeing you out side of

Linton Junior School

Wheatsheaf Way 5 - 8pm

Fresh fish daily Cod, Rock Eel, Skate, Haddock & Plaice

BBQ Chicken,	Pukka Pies, Chicken &	Burgers
Scampi, Chicken	Mushroom, Steak &	Mushy Peas,
Nuggets, Scampi	Kidney, Minced Beef	Curry Sauce

Look out for our leaflets posted through your door soon

Traditional Acupuncture

An Ancient and Trusted Way Of Healing

Some complaints treated by acupuncture:

Stress/Anxiety	Pain (relief of)	Insomnia
Low energy	Back pain/Sciatica	Asthma/Allergies
Depression	Arthritis/Rheumatism	Digestive
Headaches	Stiffness/Tension	Menstrual
Colds/Low immune	PMT	Menopause

Therapeutic Massage

Beat Stress, Recover More Quickly from Injury, Feel Energised!

Practitioner

Peter White MSC, MBAcC, Dip Massage, Dip TCM China, Insured

For a free initial consultation and bookings call: 01223 890832

Small Gifts



Watch Batteries and Straps fitted while you wait. Jewellery Repairs including sizing and polishing.

All repair work carried out on the premises by a professional with 40 years experience

We stock a selection of

Silver Jewellery • Photo Frames • Collectables • Toiletries • Greetings Cards • Gift Wrap

61 HIGH STREET, LINTON, CAMBRIDGE CB1 6HS

TEL: (01223)894225



Benten & Co.

Chartered Certified Accountants

We are a friendly, well established firm, large enough to deal with most accountancy and taxation matters (ranging from personal tax returns to audit of limited companies).

For an initial consultation (without obligation) please contact Richard King

Abbey House, 51 High Street, Saffron Walden

Telephone (01799) 523053

www.benten.co.uk



THE BUSH TELEGRAPH

THE latest government document landed on my desk last week, with a particularly robust and expensive thump. My heart sank at the 110 pages of dense type and the various graphs and charts. But on this occasion at least, the sink was only a momentary one. This document was one I had been waiting for and actually looking forward to reading. It is called the 'Five Year Strategy for Children and Learners' – not the most catchy title but you can't have everything. It is an important document that seeks to outline some very significant changes to the way schools will work in the future and it has a particular significance to LVC.

You may have heard tell of the 'open all hours' approach to schooling that some newspapers claim the strategy implies, and to some extent this is there. More importantly though, the strategy at last attempts to 'join up' the thinking about how, as a country, we manage the whole process of educating, supporting and protecting children.

Avid readers of the Bush Telegraph (and I know there are at least two of you!) will recall that I have lamented the lack of such thinking over the past 10 years or so. It seems that at last the potential of schools to provide a range of care, leisure and educational activities has been recognised and will even be funded. Linked to this is the idea that one-year budgets that are not published until a month or so before they take effect are not clever and that therefore schools should receive their funding in three year blocks.

So what is the relevance for LVC? Those of you who know the college also know that we have stubbornly held true to the notion of the school as a community resource where pre-schools, sport, leisure and continuing education can thrive alongside the compulsory school provision. You will also be aware that we are on the brink of a massive development programme that will further enhance that already full provision.

As we go through the next few months, we will be building new and better sport and leisure facilities, and designing new child care and multi-purpose spaces that will be available for the whole community. With the new special school on site, we intend to create new opportunities for the various support services to have a base here from which all children and their parents and carers can benefit. And beyond these improvements we will be building a whole new area of the College with state-of-the-art facilities from which all users will benefit. These are ambitious plans but it is very encouraging that our own development as a community college chimes so well with the thinking of national government.

Over the summer the new Broadening Education partnership with Sawston Village College began work and all of you should have received through your door the BE booklet of courses and activities that are available. The number of courses is very impressive and there really is something there for everyone. If for some reason you did not get a booklet and would like to see what you could do, please telephone Sue Albrow at the College on 892400 and we will send you one – or just call in and have a chat about what is on offer. Related to this is the appointment of Dan Schumann as Arts Development Manager for this area. It will be heartening to see the growth and development of all the arts over the next few months. As always, these are exciting times.

PLANNING APPLICATIONS

S/1932/04/B L Westlake, 77 High Street, Linton. Internal alterations to first floor to create enlarged kitchen, changes to WCs to provide enlarged bathroom and re-siting of partition between rooms 1 and 2. Blocking of doorway to room 1 and opening of doorway to room 2. Installation of storage cupboard and airing cupboard.

S/1808/04/F R Howes, 7 The Woodlands, Linton. Porch and outbuilding for Acupuncture Clinic.



NEW SEASON OF MUSIC

THE new season, beginning in October promises to be as varied, interesting and much appreciated as was last year's most successful season.

It begins with a visit from the Tallis Orchestra.

Guest conducted by a Cambridge graduate, Nicholas Collon, they will play Mozart's Paris Symphony and the Dvorak Czech Suite and are joined by an exceptionally talented young pianist, Nick Rimmer in Beethoven's Third Piano Concerto.

This first evening of the series will afford an opportunity to renew your membership with really worthwhile savings, but you can always buy individual tickets from the door or from Cambridge Arts Theatre box office on 503333.

The concert will take place at Linton Village College at 7.30pm on Saturday 9th October.

Members and non-members are welcome

Any enquiries please to:
894164 or 894460

SOPHIE'S PROGRESS

IN September Sophie was accepted onto the British Diving World Class Start Talent Identification Programme. This confirms her place as one of the top young divers in the UK and along with having access to some of the country's best coaches and facilities, Sophie will also have a great chance of securing a place on the Junior Olympic Programme.

Getting onto the scheme means weekly around the country travel to places like Sheffield, Bradford, Southampton etc. to attend training camps and competitions, and Sophie's family is given help in covering the costs of these trips by South Cambridgeshire District Council. Sophie is the only diver from the Eastern Region to have made it on to the programme.

**BED and BREAKFAST
ANN & GEORGE PEAKE**
Linton Heights
36 Wheatsheaf Way, Linton
Tel: (01223) 892516
Comfortable & friendly

LINTON COUNTRY DIARY by Darryl Nantais

Illustrated by Maureen Williams

minutes a tidy-up operation was underway, making good the damage to the trap and flicking the mess to the floor before returning to its central position. Presumably, this position allows our leggy beasts to feel the vibrations sent along any strand once a fly or accidental intruder touches the web.

If you have ever wondered what happens to all these webs, well with time to stand and stare you will note that most are eaten and recycled by the spinning spider as the silk-like substance is made of protein. Without having made an in-depth study, I wondered if spiders have ears? Do they hear sounds or rely on changes in air pressure picked up through tiny hairs on their bodies? Aye! So much to learn! If we had a thousand years upon this beautiful planet we would know so much, yet so little.

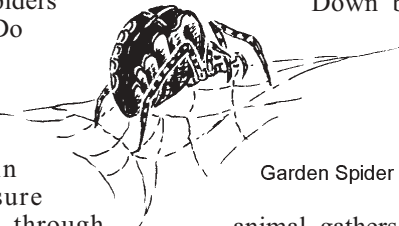
Without the experience of D' Thomas Muffet, the hairs on my neck stood up as a small spider fell from a roll of imported cloth. Flipping the spider onto its back revealed the absence of the very apt red hour-glass markings of the lethal Black Widow.

One favourite spine

chilling crawler of mine is the Nursery-Web spider *Pisaura Mirabilis*, generally found lurking in dense vegetation. You may recognise it by its habit of lying flat with its two front pairs of legs close together, perhaps in an effort to imitate a harmless insect. However, old *PM* is a member of the wolf spider family which rooms in search of prey often chasing, hiding and leaping to catch its dinner. Earlier in the year the female will carry her egg by her fangs until hatching is close. She will then attach it to a plant and weave a tent-like protection, standing guard until the young have dispersed.

Down by the Granta lurks another dark creature! The clock ticks as resentment towards this

animal gathers pace, for the destructive mink is in line for eradication. No water vole or rat is safe and the river bank will undergo dramatic changes whilst the mink is at large. Did someone call for the hounds? There's no doubt our wildlife is changing! There are reports of peregrine falcons, red tailed kites, wallabies and the mink to name but a few of our newcomers. Oh well! I heard someone say: "If history repeats itself, it could all happen again!"



Garden Spider

TOWARDS A FAIR CHRISTMAS

CHRISTMAS approaches and with it the search for suitable presents for our loved ones. A careful choice of gifts can mean that not only is the recipient delighted but also a better life is created for a third world producer. This is what happens if you buy from Traidcraft, Tearfund or Oxfam.

There will be a sale of some of the Traidcraft and Tearfund products from 10-11.30am and from 1.30-3.00pm on Wednesday 13th October in the Village Hall. Also from 6-9pm on Thursday 14th October at 1 The Furrells. Do come and have a look - there is no entrance fee and some refreshments will be available.

Buying Traidcraft goodies

like fudge, buttermints or cookies helps the sugar growers in Malawi. For example, the village of Kapasuli now has its own borehole for clean water. Previously, women and children had to carry water in containers for 1.5 kilometres from a nearby village. There are more than 500 people in the village; only some of them are farming cane sugar but all are benefiting from the water. Next the village hopes to improve hospital and school facilities.

Buying goods from Bangladesh will help producers to recover from the devastating effect of the recent floods which covered two-thirds of the country. Most producers were affected one way or another with

homes flooded, workshops closed, transport and communications disrupted. But as the floods subside, rebuilding of homes and livelihoods begins.

When looking at the Traidcraft catalogue please take time to read; "People behind the Products" stories. Also consider 'A fair trade gift with a difference'.

Traidcraft catalogues are available from me and orders can also be placed with me.

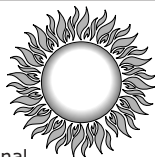
'Fair Trade', *does* make a difference in the Third World. Please support 'Fair Trade' whenever possible.

Jean Wheeler
893513

email:
pwheeler@fish.co.uk

CASA ROSA

Spanish Holiday Home to Let
Benalmadena, Costa del Sol



In a quiet location with beautiful gardens and communal pool, the apartment is just a few minutes from safe, sandy beaches, restaurants, shops, supermarkets, sports facilities and golf.

- Double and twin bedrooms, sleeps 4 to 5
- Fully fitted and equipped kitchen; full air conditioning/heating
- Cable TV, video, CD player
- Private sun terrace with stunning sea views
- Car included at no extra cost; airport collection available
- Furnished and maintained to a high standard

Brochure available on request
Tel: 01223 893596 at weekends or after 6pm on weekdays

PLUMBLINE

Plumbing & Heating
RELIABLE COMPETITIVE
FRIENDLY SERVICE



Linton

01223 893903

Mobile 07720986236



Don't delay call today

Kumon: an education for life

Whatever your child wants to achieve in life, a solid foundation in **maths** and **English** is essential. With the year-round Kumon programmes, children develop confidence, discipline and study skills that last them a lifetime.

Call your local Kumon study centre today

LINTON CENTRE
MRS K TUMBER 01223 893578

For almost 50 years, children around the world have benefited from studying the Kumon maths and native language programmes. 45,000 children of all ages and abilities are currently enrolled at study centres throughout the UK.



L.B. CABS LINTON

For all your long and short taxi trips

Airports

Courier Service
available

PHONE LINTON
01223 892986

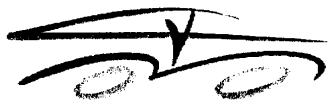
Darryl Nantais

Picture framing, cleaning
and restoration

To commission a classical
pet portrait or landscape
by Darryl

Please contact him at his
home studio. 10 Chalklands,
Linton, Cambs.
or TEL: 01223 - 890386
Mob: 079- 5757-1328

Designer & Maker of frames
to the public & trade for
over 30 years



**LINTON
VILLAGE
MOTORS**

01223 830550

BOURNE BRIDGE ABINGTON CAMBRIDGE
(nr COMFORT CAFE)

- ♦ Authorised MOT centre
- ♦ Free MOT retest
- ♦ ALL MAKES serviced and repaired
- ♦ Collection and Delivery Arranged
- ♦ FREE use of courtesy car
- ♦ Polite friendly staff
- ♦ FREE Advice
- ♦ Windscreens Fitted

*A FULLY INSURED MOT APPROVED GARAGE
CAN YOUR MECHANIC SAY THAT??*

THE LINTON NEWS
Next Publication Date **1st November 2004**
DEADLINES for both ADVERTS and NEWS ITEMS
Friday 15th October 2004

**ITEMS FOR THE
EDITOR**

Can be put in the
Linton News Box

in the Post Office
Editor: Wendy Foster
11 Emsons Close
Telephone or text
07821610861

email: LEditor@linton.info

**TO
ADVERTISE**

in
The Linton News

Contact Judith Rouse
Our advertising Manager

Telephone or text
07749198977

email: adds@linton.info



Parish Council Matters

VIEW FROM THE CHAIR

THE SUMMER is really over now – windy weather, chilly mornings, the first frosts forecast. Berry picking time is nearly over – Jasper will be complaining about being kept waiting for that! – wine and jams are underway. Hopefully some will be good enough for the next Gardening Club show. I did enjoy presenting the prizes and so admire all the talent and hard work of those involved. They deserve the support of all – join the Club!



plans were supposed to have been based, but which have actually only just been completed. I wonder how our scheme of a roundabout/junction at Little Linton will fare against the

County Council's proposed traffic lights. LPC will continue to work for a better A1307, for more effective use of the playing field area, sufficient parking and other changes, so that the SEN school does not have an adverse effect on Linton.

The children are back at their studies and with them the traffic problems. How quiet the High Street has been without the school run – will the Safer Routes to School initiative (with which the LPC has been heavily involved) encourage walking to school and decrease traffic? The proposed SEN school will also affect traffic, not just on the A1307, but also on traffic backing up through Linton due to the traffic lights and rat-running to avoid them. LPC, the Steering Group, Action A1307, et al have all been working to change the proposed traffic system and to improve the A1307 in general. It was good to see in last month's Linton News that Cllr Bear has now noted what we have been doing, and added his support.

We will soon see the computer modelling of the A1307, on which the current traffic

Cars are not the only traffic problem. We still have HGVs using High Street, despite signs telling them to take alternative routes. The boy racers are still speeding and squealing about the place – just who are they trying to impress? The infamous scooters are still revving their tiny engines and wheeling around on the Recreation Ground, messing up the turf and causing a hazard to other users. It is becoming dangerous to be a pedestrian in Linton – bicycles, skateboards, scooters and other brake-free items use the footpath and expect those on foot to get into the road to let them pass. Cars parked thoughtlessly, illegally or blocking the path all add to the hazards. But where are our CBO and PCSOs to police this? And the firebugs are back, this time on Camping Close. Bring back the village Bobby – you are needed!



WHERE IS OUR VILLAGE BOBBY?

THERE was a charged atmosphere. Strange, considering it was a lovely summer's evening. But they had gathered early today. Something was going to happen. The area was strangely void of the usual groups of users and footballers. In fact, no younger children at all. Just the group of twenty or so teenagers. Being intimidating.....maybe? Being loud and shouting..... definitely! Being unlawful.....not necessarily!

A jogger was running along, but quickly turned to go another way rather than pass the group. An elderly lady was walking some way away from the group, but she was constantly looking back over her shoulder. A man with two young children, out for a leisurely bike ride, suddenly stopped and was about to turn the children back the way they came. But it was too late..... It started. A fight had broken out between two boys, being egged on by others. This was

meant, really meant. Blow followed blow, kick followed kick. Eventually one of the boys went to the ground and was immediately set upon by four or five others, kicking and punching him while he was down. Others shouted to leave him alone, but didn't do anything to stop it. And then it was over as quickly as it had started. But news spread quickly. Soon, big brothers started turning up in their cars. Others appeared on their motorbikes. The fighting may have stopped, but the atmosphere was worse than ever.

And where was this? Maybe I've been watching one of those programs on TV about street gangs! No, you guessed it. It was our recreation ground at 6:45 in the evening on Wednesday, 1st September. Now, don't get me wrong. I know these things happen and are part of life. Hanging around with friends is part of growing up. Being loud and "invincible" is part of growing up. Even fighting with each other can be

part of growing up. But, I do not expect this to happen in our village, especially at that sort of time of evening and in such a communal area. Is crime in our village getting worse? Yes it is. But it is getting worse everywhere. So what makes Linton so special? Unfortunately - nothing! It is only very special to the people who live here. We recently lost our Community Beat Manager. He has not been replaced. Linton is not a high priority policing

area as there are not as many calls made to the police reporting crime as other areas. So, despite the size of our village, if the Police can get away with not replacing him, then they will and they would have cut their costs at the same time. But Linton needs and deserves a replacement CBM and we will not get one unless we fight (excuse the pun) for one. I was "volunteered" to be the Police Liaison Officer for the Parish Council earlier this year, and ever since have been pushing and contacting the police within the Sawston sector for a replacement CBM. I have had my hopes raised many times that a replacement was imminent. I have now had enough of my time being wasted, and this incident I described earlier, along with other stories reported to myself from all over the village, proves to me that something needs to be done now! I, on behalf of the Parish Council, am writing to the Chief Constable and the Police Authority informing them both of the urgency for a replacement CBM. I am asking for your help. Please report all crime, however insignificant you may think it is. Every call is logged and helps my cause. And please be patient, as you are not always answered immediately. If you are reporting an incident or crime.....tel: 01223 358966 (Obviously - if it is an emergency ring 999). Roger Hickford Police Liaison Officer, Linton Parish Council.

Stevens solicitors

Quality Advice From Experienced Lawyers

25 High Street, Haverhill, Suffolk CB9 8AD
Tel: (01440) 762511 Fax: (01440) 703873
also at Thorn House, 11 Hill Street, Saffron Walden, Essex CB10 1EH
Tel: 01799 526849 Fax: 01899 524799

BEAUTY & WELL-BEING

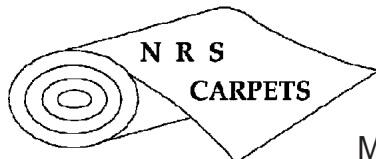
At Flint Cottage, Linton, Cambridgeshire
Fully Qualified Beauty/Holistic Therapist (VTCT IIHHT)

Body Massage (ladies only) Aromatherapy Facial & Body treatments
Indian Head Massage, Reflexology, Susan Molyneux Facials, Jessica
Manicures & Pedicures, Waxing, Brow Shaping/Tinting Electrolysis &
Ear piercing, Heavenly Bodies Air-brush Tan System

Tele: - Annette Jackson 01223 893114 / 893896
BABTAC member



British Association of Beauty Therapy & Cosmetology



Nick Scott

Tel 01223 893634
Mobile 07885 173113

* CARPETS * * VINYL *
* CONTRACT FLOORING *
* HOME SELECTION *
* FREE MEASURING & ESTIMATING *

35 Mortlock Gardens, Gt Abington, Cambridge CB1 6BA

LINTON PAVING COMPANY

Block Paving, Slabbing &
Gravel Drives, Patios &
Fencing, Property
Maintenance & Small
Building Works
For a Local, Reliable and
a Friendly Service with
FREE Quotations
Tel: 01223 890060 or
07765 594398
lintonpaving@aol.com

BED AND BREAKFAST

at
THE OLD BAKERY
WEST WRATTING
CAMBRIDGE
CB1 5LU

Also cottage to rent for holidays,
weekends and short-term breaks.
(situated at West Wrattling)
Sleeps six people

Tel: David or Carol
(01223) 290492

GARAGE DOORS

SERVICED - REPAIRED - REPLACED
(SPARES FOR ALL MAKES)

FREE : Estimates, Advice, Brochures.

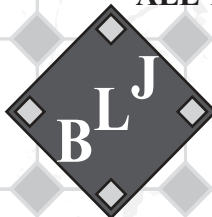
NEW DOORS

Electric Operators

Steel - Maintenance Free Steel -
Glass Fibre - A.B.S.(PVCu) Timber -
Sectional Doors (Insulated/Single Skin) - Roller Doors

A.B.C.GARAGE DOORSYSTEMS Tel 01223 893798 Mobile 07774499537
www.garagedoorsabc.co.uk email@garagedoorsabc

ALL TILING WORK UNDERTAKEN



CONTRACTS

NO JOB TOO SMALL
ESTIMATES FREE

TERRACOTTA,
CERAMIC, MARBLE,
QUARRY TILES

Tel: 01223 891372

FITNESS FOR YOU...



Fitness for guys or girls, for mums or dads.
Fitness for singles, for couples, for groups.
Fitness for shaping your body, toning your
muscles or pepping-up your health.

Whoever you are, whatever your fitness need,
workout in the relaxed and friendly
atmosphere of our Fitness Suite. We offer a
comprehensive suite of machines, training and
low-cost membership.

To find out more contact Mark Wilson at

The FITNESS Suite
Linton Community Sports Centre
01223 - 890248

Council minutescouncilminutescouncilminutescouncilminutescouncilminutescouncilmin

ON Thursday 2nd September, 2004 there were 12 Councillors present.

Whilst considering the Planning meeting minutes held on 5th and 24th August, C^{llr} Cox reported he had written to SCDC regarding the Dog & Duck's recent planning application for kitchen extraction equipment. He had now received a reply from SCDC thanking him for his correspondence regarding a property in Guilden Morden. It was noted by Council that the extractor fans must have been noisy for the sound to carry that far!

C^{llr} Kenyon had issued a written report as co-ordinator for the Recreation Ground. It was noted that the problem with moles was increasing. The Clerk reported that the contractor should be dealing with this. C^{llr} Potter requested that the Tree Warden be asked to check on the Golden Jubilee trees as some were in need of attention. This was agreed by the meeting.

C^{llr} Rossiter reported there had been problems with organising a date for a meeting when all co-ordinating group members were available. This was still being pursued.

C^{llr} Cox reported that Hogs Holme Field had finally been cut. The Clerk noted receipt of a letter from Herald advising of difficulty with access to this area during wet weather suggesting improvements that could be made. The Clerk was to pass a copy of this letter to C^{llr} Cox and then organise to cost the proposed improvements. This would then be brought back to Council.

The Clerk then reported a recent email stating that second half grant monies from the

Countryside Agency for the Parish Plan were finally being sent out. C^{llr} Rossiter was concerned to note that the Countryside Agency appeared to be querying certain aspects of the funding towards the booklet which was issued with the questionnaire. This was to be investigated with the Clerk.

C^{llr} Rossiter then reported her concern regarding a letter received from Carol Wilson, Neighbour-Hood Watch Co-ordinator within Cambs Police, based at Sawston, in which she reports funding for that section of her work having been curtailed. As Neighbourhood Watch projects were highlighted within the Parish Plan as being important to the community, this needed to be investigated. Any loss of effort behind Neighbourhood Watch Schemes was to be deplored. Discussion took place regarding this and it was agreed that the Clerk and the Police Liaison Councillor would work together to investigate and report back.

The Chairman then drew attention to a report issued this evening from C^{llr} Hickford regarding police activity in the village, brought about through a recent incident witnessed on the Recreation Ground. Time was allowed for the report to be read. Discussion then took place regarding the perceived lack of police presence in the village. C^{llr} Cornell drew attention to a picture, on the Cambs Police website, which showed the Linton Community Beat Manager as an empty black silhouette stating that the situation was vacant. Monies paid by the village into the Police budget were also discussed. It was agreed that the PCSO's powers were limited and that this was becoming widely known by those who would make use of the situation. C^{llr} Hickford's report sought agreement to an 'Action Plan' of investigations and letters, to be carried out by the Clerk and himself. The meeting agreed to this unanimously.

The payments due list was circulated. The Clerk reported on each item. C^{llr} Cox proposed that the payments, as listed, be made. This was seconded by C^{llr} Hammett and agreed by the meeting with C^{llrs} Batchelor and Hickford signing the cheques.

The correspondence list for August was then reviewed and all items noted. Of particular interest:-

Item 05 – Invitation to Hundred Houses AGM – The Chairman was to attend.

Item 09 – C^{llr} Alper's suggestion to organise a publicans forum to discuss the forthcoming alterations to licensing laws. Discussion took place and it was agreed to request that C^{llr} Alper lead this issue and organise accordingly.

Item 12 – St Mary's PCC – Reply to PC letter regarding procedure for requesting adoption of the churchyard. The Clerk reported this issue as ongoing. When all details previously requested by Council are available the issue will be back on the Agenda.

Item 14 – M^r Fairey – Request to re-site waste and dog-waste bins on Horseheath Road. Discussion took place regarding this request. It was noted that the bins were within the 1-meter strip of land currently deemed to be grass verge, and therefore maintained by this Council under agency for Cambs County Council. The cost of re-siting was considered. As a result of discussion it was agreed that the Clerk should inform M^r Fairey that the Council was unable to consider his request due to costs involved.



Horseheath Road bins

Item 18 – Letter regarding proposed extension to High Street parking restrictions. This had been passed to the traffic working party for inclusion at the next Steering Group meeting.

Item 30 - SCDC – Street Trading Consent application

BED & BREAKFAST

Mrs Monica Clarkson
4 Harefield Rise, Linton
Tel/Fax: 01223 892988
Quiet modern bungalow
Families welcome
No smoking


PAULINE'S
CHILDCARE IN
LINTON
FOR UNDER FIVES
Ofsted registered
Monday – Friday
Ring for details
01223 891890

CHIMNEY SWEEP

J. L. WIGHT

Guild of Master
Sweeps.

Fully Insured

Qualified advice /
problems solved.

Certificates issued.

01223 570057

20 Rampton Drift, Longstanton

for Wheatsheaf Way on a Thursday between 5-8pm, for a fish & chip van. This had been considered at Planning and was now on hold until Linton Junior School could be consulted.

Item 35 – Zurich Insurers – A letter regarding the incident involving a child in the cemetery last year. It was noted that no liability payment had been made.

Item 41 – LVC & Curwen Print – Invitation to Chairman which would be accepted.

District Councillor Batchelor then reported, further to Items 18 and 23 on the Post List, regarding the proposal for 18,000 houses at Abington. The government instigated consultants report had now been published. The recommendations were now for 11,000 houses within the whole of South Cambridgeshire – 2,000 of which would be spread throughout the villages; a further 2,000 which the consultants state have been under-reported within the new town of Northstowe; 5,000 for a further new 'town' at Waterbeach and the last 2,000 are unclear. Within the report there is no mention of Abington at all. However, the consultants are recommending further studies to last past 2021. C^{llr} Batchelor then reported that decisions made on the basis of this report will be made by the East of England Regional Assembly. A regional planning panel will sit next week and will then make their recommendations.

C^{llr} Cox queried who elected these panels and committees? C^{llr} Batchelor reported they were not elected but appointed bodies. However, there was political proportionality with its members.

C^{llr} Urwin expressed concern at the 2,000 to be spread through villages. Had the report recommended any particular villages? C^{llr} Batchelor reported that it would be likely that these 2,000 would be placed within the newly created tier of 'Rural Centres', of

which Linton was not included. It was more likely to be larger villages such as Sawston or Histon both of which had better infrastructure. The Chairman thanked C^{llr} Batchelor for his report.

During any other business C^{llr} Kenyon noted that organic waste could now be recycled in the green Wheelie Bins. She queried whether there was there to be any publicity? It was noted that the Cambridge Evening News had run articles



The Grip pedestrian bridge in Hadstock Road

regarding this, however, SCDC's own magazine was due for delivery very soon and there was full information available in this edition. There was also information on the notice boards.

C^{llr} Kenyon also reported problems developing with parking at the junction of Horn Lane and the High Street. It was believed this was the result of building work taking place in the vicinity but would be monitored.

C^{llr} Gore noted an article in the recent Calc Bulletin regarding declarations of interests for councillors and the recommendation that having made a declaration, the councillor should then withdraw from the room.

C^{llr} Cornell reported that the plastic recycling bank in Coles Lane was operating very successfully.

She was also concerned to note that the pedestrian bridge in Hadstock Road had yet to be

repaired. The Clerk reported being copied in to an email from the County Council to one of the businesses at the Grip Industrial Estate, which stated that the bridge should be repaired by the end of the September.

C^{llr} Hickford queried the status of the Youth Shelter on the recreation ground. The Clerk reported that the supplier was experiencing problems with a sub-contractor and the installation had been delayed.

The Vice Chairman then drew attention to the folder delivered to each councillor containing the current Grass Cutting contracts within the village and associated maps. He reported that councillors interested in or who had ideas for these contracts, should examine what was current and then write to the Clerk with any suggestions for improvement by the end of September. These would then be costed and brought back to Council prior to the contracts going out to tender in November.

C^{llr} Batchelor then reported that consultation on the budgets and Council Tax for 2005/06 would start shortly at South Cambs District Council. There was to be a meeting arranged specifically for Parish Councils on 22nd September and more details for the public within the next SCDC magazine.

The meeting closed at 21.05.

N.C. Bowden

ELECTRICAL

Electrical Installations
Periodic Inspection Reports

Tel: 01223 893 497
Mobile: 07976 838 373



**Has your child got
reading, writing,
spelling difficulties?**

Contact Mrs ME Clark
(Cert. Ed. Cilip.)
Specialising in dyslexia

Reasonable rates and
free initial consultation

Tel: 01223 892657

Donnelly and Morrice

**ALL ASPECTS OF
BUILDING WORK UNDERTAKEN**

Telephone:
01223 892915
or 01223 891877
Mobiles:
07855 346826
or 07977 486941

Stokes Maintenance Services Ltd.

Speak to us first for:

- Replacement windows, doors, etc.
- Sold Secure motorcycle security
- Replacement locks
- Bespoke joinery
- Home security systems
- Fencing & garden joinery

For further information on our services and for details of our latest offers please visit our website: www.sms-cambridge.co.uk

Linton, Cambridgeshire

Phone: 01223 890887/811845
Mobile: 07734 351575/351576
E-mail: info@sms-cambridge.co.uk

S.M.S.
Cambridge

for all your maintenance requirements

Spinning
WORLD

Join us at:

**The
Cathodeon Centre**

High Street, Linton

Every Monday

At 7pm

Tel.

Lesley:- 01223 248352

**the NAME
for property
in the AREA
is:**

Kevin Henry

estate agents

tel: 01799 **513632**
www.kevinhenry.co.uk

Kevin Henry in association with other independent
Estate Agents offers the BEST coverage in the AREA

Linton Parish Council

Linton Social Centre
Coles Lane, Linton
Cambridge, CB1 6JS
Tel: C. 891001

Web site: www.lintonpc.org.uk
Clerk to the Council M^{rs} Gill Barker
Email: clerk@lintonpc.org.uk

Office hours
Monday 9am–12noon
& 4–6pm
Tuesday–Friday
9am– 12noon
Or by appointment

PARISH COUNCIL MEETING DATES

FULL COUNCIL

OCTOBER 2004: 7th & 21st

NOVEMBER 2004: 4th & 18th

All meetings held at the Cathodeon Centre and commence at 8pm

FED UP REPAIRING YOUR FLAT ROOF?



NOW YOU CAN REPLACE IT ONCE AND FOR ALL

- Flat roof problems solved permanently with Rubberbond EPDM roofing systems
- 20 year guarantee
- A value for money roofing system with a 40+ year proven life expectancy
- Total protection for all flat roofs

FOR A FREE SURVEY, FRIENDLY ADVICE AND
NO OBLIGATION QUOTATION CALL

**WHITEHALL
PLASTICS**
RUBBERBOND
EPDM



Freephone: 0800 0749 653 Tel: 01353 723799