

E & E PLUMRIDGE
Design & Print
41 High Street
Linton
01223 891407

Over 2,400 copies
distributed
free in Linton,
Hildersham,
Hadstock &
Bartlow

THE LINTON
NEWS

www.thelintonnews.co.uk email editor.linton.news@gmail.com

October
2022
Vol. 36 N°7
Publication date
Monday 3rd October

E & E PLUMRIDGE
Design & Print
41 High Street
Linton
01223 891407

**“It has always
been easy to
hate and
destroy.
To build and to
cherish is
much more
difficult.”**



Elizabeth II
1926-2022

Cover illustration by Maureen Williams

Readers write...

Dear Editor,

The family of Beryl Terry (nee Faulkner) would like to let the village know that Beryl passed peacefully away on Friday 19th August, aged 84 years, following a hard fight against P.S.P (Progressive Supranuclear Palsy). We would like to send a special thanks to the Carers and staff at Southwell Court Care Home, Royston for their kindness and care. The funeral service is to take place at Cam Valley Crematorium on Tuesday 11th October at 11 am. No flowers please, but if wished, donations may be made payable to P.S.P. and sent c/o Peasgood & Skates, 48a High Street, Sawston, Cambridge, CB22 3BG or via her personal "In Memory" page at www.peasgoodandskates.co.uk

Vic, Alan and Ian

Double musical bill at St. Mary's

ON Saturday, October 8th at 3pm The Friends of St Mary's will be hosting a concert by Peter Chapman and his pianist, Mike O'Neill. The pair first delighted us five years ago with their repertoire of songs, popularised in the 60s, by Michael Flanders (from his wheelchair) and Donald Swann. This time they will perform such amusing and entertaining songs as 'The Gasman Cometh', 'I'm a Gnu' and 'the Hippopotamus Song' as well as some new numbers. Tickets at £10 (£25 for families of 3 or more) from Margaret Cox (891231) and Hugh Paton (890362). Tea and cakes will be served after the concert.

Then, on **Saturday 29th October at 7.30pm**, Hadstock Silver Band will perform in aid of the church organ fund. Tickets are £10 and can be purchased from Sue Ellis (892257) or Charlotte Ellis (events@stmaryslinton.org.uk)

Margaret Cox
Friends of St. Mary's
Charlotte Ellis
St. Mary's Events committee



Hadstock Silver Band have been entertaining audiences for decades

Linton in Bloom – enhancement through art

CLLR Carl Cieluch has a vision and the drive to enhance our village. With the support of the Parish Council, he is pioneering a project giving parishioners the opportunity to be involved in an exciting challenge.

Best Kept Village was awarded to Linton in 1987. You have probably noticed the wall plaque on the outside of the village hall, but what has happened since? Best Kept Village has been replaced by Village In Bloom. The opportunity is there to put



Floral displays at the Dog and Duck

numerous difficulties and challenges from the last two years behind us and a real sense of pride back into our Parish.

The preparation has already started. A 12 month portfolio is prepared and commences in June 2023. An official application to participate can be made in June 2024, and Linton In Bloom is judged in July 2024.

2024 will be the first year of Linton In Bloom and, as any gardener knows, success depends on planning, preparation, planting and maintenance. We have been busy studying maps of the village and choosing areas which would benefit from planters, hanging baskets and flower beds. The aim is to create a floral trail through the village including the public open spaces. The floral displays will provide visual enhancement for everyone, and will promote community involvement.

But it's not just about creating a floral treat for everyone, it is also an opportunity to address the cleanliness of the village, and areas that may look a little tired or run down.

We need your help!

This project is dependent on parishioners and business owners taking responsibility for a small area with cosmetic improvements, planting, ongoing maintenance and watering. Let's be inspired by the Dog and Duck, where the floral displays create a stunning focal point in the centre of the village. The Parish Council will consider supporting the project with funding to purchase equipment and will approach Cambridgeshire County Council for permission to create new flower beds on suitable verges.

In the next few weeks, the Parish Council office will contact businesses, schools and community buildings with more information. There is no limit on who can get involved. Every planter is a plus and every window box is welcomed. Let's work together and involve as many people as possible to create a village we can all be proud of.

If you would like more details, please email the Parish Council office enquiries@linton pc.gov.uk

Parish Clerk

A new farm shop on our doorstep



Calixta supplies some of the best restaurants in the country

IN October, Flourish Produce will open a farm shop at their home in Hildersham. The enterprise will be the first public-facing outlet for Flourish's regeneratively grown fruit and vegetables, usually only available to chefs and restaurants.

Calixta Killander founded Flourish Produce in 2017, cultivating a small market garden to supply restaurant chefs with premium, flavourful vegetables, prioritising soil health and biodiversity above all else.

Over the past five years, she has expanded into neighbouring land and now operates a

diverse regenerative system over 56 acres, comprising heritage grains, silvopasture and hundreds of lesser-known fruit and vegetable varieties. The quality of produce has earned Flourish a prestigious reputation among some of the best chefs and restaurateurs in the UK - customers include Brat, Manteca and Clove Club in London, and Restaurant Twenty Two and Garden House in Cambridge - and has garnered awards along the way.

The opening of a farm shop marks the beginning of the next chapter in the Flourish journey. The shop will be stocked with vegetables, herbs, fruit and flowers grown and harvested by the team on the farm. With Calixta having spent years sourcing seeds for some of the best varieties of crops from all over the world, customers can expect interesting, unusual varieties, alongside a range of seasonal staples with exceptional flavour.

The farm shop aims to support local farmers and artisans and will showcase a carefully curated range of food and drink, homeware and lifestyle ranges. Expect eggs, potatoes, honey, juices, oils and jams from British growers and producers that share the environmentally-minded ethos of Flourish.

Calixta, founder of Flourish Produce, commented: "This really is a dream come true to be able to open a shop in the little corner of the world that we call home, to be able to share the fruits of our labour with those at home rather than just restaurant chefs. We can't wait to welcome you!"

A carefully restored old farm building will house the new farm shop - a beautiful space that's full of character. As well as operating as a shop, the space will also play host to a programme of workshops for 2023, from natural dyeing, lino cutting, table scaping, calligraphy and more.

The exact opening date is to be confirmed, but please sign up to their newsletter at www.flourishproduce.co.uk or follow them at @flourishproduce @flourishfarmshop for updates on the launch. For more information please email office@flourishproduce.co.uk.

flourishproduce.co.uk

Flourish Produce, Cooks Pen Farm, Linton Road, Hildersham, CB21 6BS

RJ Fencing of Linton
Your local fencing company

- > New fencing and repairs
- > Hedgehog friendly fencing
- > No job too big or small
- > Free quotations and estimates
- > Landscaping services
- > Licensed waste carriers
- > Friendly professional service

Enquiries call
Remus 07711030877 Jason 07719895149
rjfencing1@outlook.com

Wylde Sky BREWING

LINTON'S CRAFT BREWERY

brewery fresh beer | food trucks | live music | good vibes

BREWERY
Grip Ind. Estate
Hadstock Road
Linton
CB21 4XN

TAPROOM
Weds - Sun
Check out
our events

SHOP & ONLINE
FREE LOCAL DELIVERY

thanks for supporting LOCAL

@wyldeskybrewing | wyldeskybrewing.com | 01223 778350

KJL Roofing

All roofing repairs, lead-work, renewal of pitched or flat roofs

New guttering, repairs/unblocking

Free estimates before any work commenced

25 years + Experience

Tel: 01223 892542
Mob: 07958 618440

PRIVATE SCIENCE TUTORING

- KS3 and KS4 Biology and Chemistry
- A level Chemistry

Mrs Ceri L Thomas
BSc (Hons), MSc, PGCE

I have 40 years of experience involving secondary and sixth form teaching, tutoring, examining and education consultancy.

Full CV and references available.

cerilthomas@btinternet.com

01223 892480

ADMIRAL ESTATES

Residential Lettings and Property Management

- Local, Family Run, Business
- Fully Regulated, Compliant and Qualified
- Specialists: Cambridge, Linton & Local Villages
- 25 Years Experience

If You Prefer Great Service From A Good Local Business? Why Not Call Us?
Check Out Our Google Reviews: Cambridge Office or Our Local Linton Office.

Call us Now: 01223 891227

www.admiralestates.co.uk

Affordable Quality Blinds

CapriBlinds

ALL TYPES OF BLINDS SUPPLIED AND FITTED

FREE QUOTATIONS
FREE HOME VISIT
07774 168833 TEXT ONLY

or email colin@capriblinds.co.uk
ALL BLINDS ARE MADE IN ENGLAND - FAST LOCAL SERVICE

Visit capriblinds.co.uk

GLENWOOD BOLTS & SCREWS LTD

www.glenwoodbolts.co.uk

SUPPLIERS OF QUALITY FASTENERS, FIXINGS & SILVERLINE TOOLS

Unit 2 Lintech Court
The Grip Industrial Estate, Linton
Cambridge, CB21 4XN
Tel: 01223 892095 / 893931
Fax: 01223 894122

NRS CARPETS

HOME SELECTION
FREE MEASURING & ESTIMATING

All types of flooring available

Tel: 01223 893634
Mobile: 07885 173113

Can you help the Granta Grapevine?



The Grapevine has provided a vital service for over 30 years for those who are visually impaired or have difficulty reading the text for any reason, and has now been running without a break for 32 years. With the loss of Jim Foster this year we now need a treasurer in addition to help with recording and editing audio material. Being a part of the production team brings many benefits, including improving technical and production skills, meeting our appreciative listeners as well as being a member of a very friendly group. If you think you can help us, email grantagrapevine@gmail.com call 893619 or see our website grantagrapevine.org.uk for further information.

Mike Crofts

Light entertainment

'LINTON Churches Together' invites families with children aged 11 and under to join us in the garden of Linton Free Church for our annual Light Party on Sunday 30th October at 5pm. Join in with different activities, crafts and games as we celebrate light in the darkness.

Everyone will be able to warm up with a mug of hot chocolate and some hot dogs.

The event is free for all who sign up.

Sign up at www.lintonfreechurch.org.uk/light

Debbie MacBean

Linton Churches Together

Heights hit the ground running

OUR start to the new academic year here at Linton Heights has well and truly begun! We have welcomed new year 3 pupils as well as new members of staff. The children and staff have returned from their summer holidays raring to go and it has been wonderful to see many brilliant subjects taking place in the classrooms. Year three have begun the year with the Ancient Egyptians and we have the Ancient Greeks in year 4. Year 5 are studying the Romans, whilst Year 6 are stepping back in time to World War II.

Across this half term, we are going to be having trips and visitors, as well as taking part in our first Harvest Festival at the church of St. Mary since 2019. We are so excited to be able to resume our normal activities and can't wait to see the faces of the children, parents and carers when the singing begins. Although we have had a fabulous start to the year, we were deeply saddened to learn of the passing of her majesty Queen Elizabeth II, and to mark her remembrance we have held a special assembly and will continue to learn about her life celebrating her incredible achievements.

We are crossing our fingers for a fabulous year!

Stacey Chapman,
Assistant Headteacher

An enriching experience at LVC

WHEN we returned a month ago it was the first time that we have come together as a whole school community with the same timetable, after the last two years of year group bubbles. This means that all year groups are able to mix at social times and that we have been able to rejuvenate our clubs offer now that lessons aren't taking place during lunch time.



Above and below: The enrichment fayre held at LVC

Providing an enriching learning experience is a priority at LVC. It has been great to see students getting involved in extra curricular activities on offer. This term has seen the launch of a new Year 7 and 8 rugby club as well as a large number of sports. Our Enrichment Fayre promoted ed gardening, Latin, languages and a book club, amongst other opportunities on offer this year.

A large number of students at LVC have signed up for peripatetic music lessons too. It was great to celebrate the success of so many that achieved graded ABRSM examinations in the summer. It was wonderful to welcome so many year six families for our open evening ahead of the secondary school application deadline later this month. Birth rates continue to be relatively low in our catchment area so we continue to attract students from neighbouring villages and counties. The next main school calendar event is our sponsored walk which takes place on 21st October. You may see LVC students in the local area in an array of fancy-dress, raising funds for the Friends of LVC and exercising together.



Helena Marsh

THE LINTON NEWS Next publication: 7th November 2022
DEADLINE FOR NEWS ITEMS:
Wednesday 19th October

ADVERTISING

Requests for adverts can be sent to:
Judith Rouse: adverts.linton.news@gmail.com

ITEMS FOR THE EDITOR

Should be sent to Jack Glossop
editor.linton.news@gmail.com

FOR DISTRIBUTION QUERIES CONTACT:

Delivery managers: Jenny and Chris Murison, 660408, or 07905 384741 delivery.linton.news@gmail.com

Call 893619 for an audio version of the Linton News

October bin collection dates (Linton)

Black bins: Monday 10th Monday 24th
Blue bins: Monday 3rd Monday 17th
Green bins: Monday 3rd Monday 17th

LINTON & DISTRICT HISTORICAL SOCIETY TUESDAY 18th OCTOBER 2022



A Talk by David Caulfield

LINTON VILLAGE HALL

COLES LANE - 7.30 p.m.

Visitors and new members always welcome

THANK YOU!

Waggon & Horses Linton

You raised an incredible

£1790.70

From your fundraising events for Addenbrookes Hospital Breast Care Unit!

Huge congratulations and thank you so much from everyone at Addenbrookes and ACT

WHAT'S ON High Street Linton CB21 4JT

October.....

Saturday 8 th	Karaoke	8pm
Wednesday 12 th	Quiz	7:30pm
Saturday 22 nd	Live Music – Chris Wilson	8pm
Wednesday 26 th	Halloween Rock 'n' Roll Bingo	7:30pm
Saturday 29 th	Halloween Party – Worldy Band	8pm

Tuesday - Sunday Happy Kebab Burger van from 6pm

sqcarsales.co.uk for service & quality

SQ Car Sales

Quality used cars

t: 01223 778 448 m: 07908 128 164

YOU BEAUTY
CAMBRIDGE

YOUR LOCAL
BEAUTY SALON

Check us out at
5 Balsham Road, Linton
Cambridge CB21 4LD

youbeautycambridge.co.uk
01223 668400

zigzagpilates

- Qualified Body Control Pilates Teacher.
- Classes and 1-1 sessions
- Specialising in older and less able clients.

Contact Rachel **07905105081**
Rachel@zigzagpilates.co.uk
www.zigzagpilates.co.uk

**THEATRE DANCE
TRAIN ACT SING**

Outstanding classes in acting, singing & dancing
Every Saturday in Linton

Book a taster session TODAY!

07585525062
linton@theatretrein.co.uk
www.theatretrein.co.uk/linton

If you BELIEVE,
you can
achieve and exceed

Patrons
Sir Derek Jacob KBE | Alfred Molina
Catherine Tate | Lucy Davis

PLUMBLINE

PLUMBING AND HEATING ENGINEER
PROFESSIONAL DOMESTIC PLUMBING SERVICE

Including Property Maintenance
Painting: Tiling: Plastering: Carpentry

Call John on
01223 893903

Supcik@talktalk.net
Fully Qualified and Insured

Friendly and Reliable Service No Job Too Small

**BODY DESIGN
PILATES**

Su Matthews
REPS LEVEL 4 PILATES TEACHER
& BACK4GOOD PRACTITIONER

07986 692 334

Pilates Classes
Linton & Horseheath

su@bodydesignpilates.co.uk
bodydesignpilates.co.uk

Linton

07958 657300

lintoncabs@btinternet.com

Linton Cabs
Private Hire for: Airports / Train Stations /
Local Travel

Martin French

Gardening Club Diary

AT the Club's first meeting after the summer break, Nigel Start gave us a very knowledgeable and entertaining illustrated talk on the History of Gardening in Britain. He took us on a whistle-stop tour of the evolution of gardening from the cultivation of foodstuffs in prehistoric times to the modern day, via the Hanging Gardens of Babylon, the Romans, Capability Brown, the Allotment act, agrochemicals and the Green Revolution.

The scorching heat of this summer has suited our greenhouse tomatoes which produced bowlfuls of the sweetest and tastiest tomatoes we have ever grown, some compensation for the total failure of our outdoor crop last year due to blight.



Above and right: tomatoes and sunflowers grown from seed



In a relative's garden, the sunflowers we nurtured have unexpectedly produced some eleven foot tall plants with multiple bright yellow flower heads. We grew these tomatoes and sunflowers from seed so gardening is always full of surprises!

The next meeting on the 11th October at 7.30 pm in the Village Hall marks the start of the club's 2022-2023 programme. The meeting will start with a short AGM and I will then give a talk on 'Looking at the Garden Close-Up' showing the wonders of the garden using some of the many macro photographs we have taken over the years. Future talks planned include 'Difficult Areas in Gardens', 'Companion Planting for a Balanced Garden', 'Incredible Edible (and Drinkable) Plants', 'A Gardener's Tale - 7 years a Gardener at RHS Wisley' and 'Ideas for Labour Saving Gardening'. Everyone is welcome to come along and join the Club.

Jim, Linton Garden Club
lgcsecretary@yahoo.co.uk, tel. 01223 893577

Send some happiness in a box



Last year's boxes wrapped and ready

ST MARY'S Parish Church will again be a collection point for 'Love in a Box' Christmas shoeboxes, demonstrating to some of the most vulnerable children and elderly people in Romania that someone cares. Love in a Box is organised by Children in Distress, a small charity based in Glasgow. To take part, you need to gift-wrap an empty shoebox, fill it with suitable gifts, add £2 towards transport costs and deliver to St Mary's on Sunday 6th November. More info and a leaflet with full instructions is available from Sarah, St Mary's Children and Families Minister cafml@stmaryslinton.org.uk

Sarah Thorne

A Hindu wedding

theWI
INSPIRING WOMEN

DEBBI Mower, the president of Balsham WI, was invited to her first Hindu wedding, the groom being her son's partner's brother. She wore a sari for the first time, given to her by the groom's mother. Debbie expertly showed us how to dress in a sari, not an easy feat with the garment being five and a half metres long, but the effect was stunning.

Debbie showed members some photographs, including one of the bride and attendants' mehndi hands (traditional patterns painted with henna).

The dress code was saris, suits and ties, lehengas (a bodice and skirt with scarf over the shoulder) and kilts, as the groom's parents had settled in Scotland in the 1970's and the groom had a broad Scottish accent. A Hindu ceremony is not legally binding in this country so they had to have a civil ceremony as well.

Traditionally, the groom is carried in on his friends' shoulders. Coloured smoke bombs were let off. A piper and drummer led the couple in and they stood under a canopy, the bride dressed in red and gold. They prayed to Ganesh, and made offerings to a fire. Scarves were tied around the couple's hand to bind them together, the groom made a red mark on the bride's head and they walked around the fire seven times while the guests gave offerings such as money. The parents gave their blessings by putting sacred water on the couple's hands.

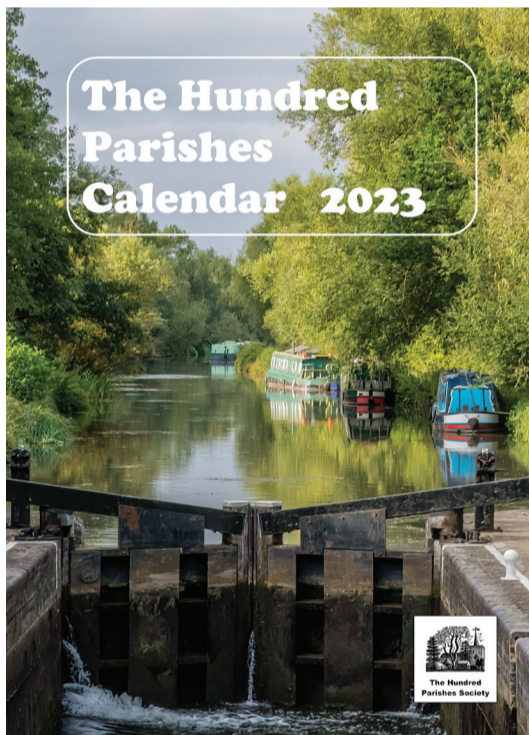
The service is traditionally all in Sanskrit, and after the ceremony confetti is showered and 18 inch sparklers are handed out to provide a passageway to the couple's new life together. The ceremony and reception typically take 12 hours.

After the talk, members enjoyed traditional Indian sweets made by committee members. Our next meeting is on 4th October and the talk is by Jim Anderson, a local artist, on mosaics. New members always welcome, or come as a visitor for a small fee to try us.

Linton WI

Hundred Parishes Society

THE Hundred Parishes Society is a membership organisation and also a registered charity. Its formal objectives are to advance the education of the public in the character and history of The Hundred Parishes, to provide information for leisure time occupation, and to promote the conservation, protection and improvement of the area, all for the



2023 calendar cover

benefit of the public. We tend to abbreviate this by saying we encourage people to appreciate the area. Over the years, the Society has pursued its aims through a number of channels: regular articles in local magazines; various elements of its website www.hundredparishes.org.uk, and a hard-back book, 800 copies of which now reside in people's homes and libraries. We have recently expanded our activities by launching The Hundred Parishes group on Facebook and by producing a calendar for 2023.

We hope the Facebook initiative will engage with an additional audience as well as providing existing members with what may also suit some of them. The immediacy and interaction of Facebook complements our established, structured approach - which will remain undiminished.

If you already use Facebook, just carry out a search for The Hundred Parishes. Once you have agreed to the group rules, you will be able to join the private group to share in discussion and post photos if you would like to. You do not have to be a member of The Hundred Parishes Society to join the Facebook group.

The Hundred Parishes 2023 Calendar is now available from several local outlets including Hart's Books in Saffron Walden and Guildhall Stores in Thaxted. It features photos of the local area and can be purchased for £10. We hope many people will buy a copy to hang on the wall. Please see our website for further details and a full list of stockists.

Ken McDonald
Secretary
Hundred Parishes Society



Cambridgeshire Family
Chiropractic Centre

Bespoke massage and chiropractic care for aches and pains
Specific techniques for pregnancy and children
15 years' experience
Call 07870568548

www.cambridgefamilychiro.co.uk



McKenzie & Haywards
Garage LTD

MOT by appointment while you wait
Servicing, Collection & Delivery Service

Unit 3 & 4, Lintech Court
The Grip Industrial Estate
Linton, Cambs
CB21 4XN

Tel : 01223 894140
Fax : 01223 890035
mhgarage@btconnect.com

travel counsellors
With us...it's personal

I offer a personal, bespoke, concierge travel service. From city breaks to cruises, luxury beach holidays to staycation and even corporate travel. I can take care of everything for you from start to finish. Following the Covid 19 pandemic, it has never been more important to book your travel with your local experienced travel expert!

Romy Frow
01223 929 080
Romy.Frow@travelcounsellors.com
www.travelcounsellors.co.uk/romy.frow
RomyFrowTravelCounsellors

TIM PHILLIPS & Co. Accountants

Established 1991

Independent, specialist service for:

**Small Business • Self Assessment
Personal Taxation**

Free initial consultation - no obligation

EASY, FREE PARKING

Copley Hill Business Park, Cambridge Rd., Babraham
Off A1307 between Wandlebury and Babraham

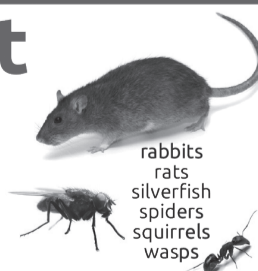
Tel: 01223 830044. www.tpaccounts.co.uk

Pest Right Pest Control

ants
bedbugs
bees
carpet beetle
cluster flies
cockroach
earwigs



fleas
flies
foxes
mice
moles
moths
pigeons



rabbits
rats
silverfish
spiders
squirrels
wasps

Based in Linton, call Mark or Carolyn on
01223 897982 or 0845 4682412 or 0777 620 4483 for
a discreet professional insured service

RESIDENTIAL • COMMERCIAL • AGRICULTURAL • INDUSTRIAL

Linton Complementary Health Centre

2B Bartlow Road, Linton, CB21 4LY

- Acupuncture
- Shiatsu
- Massage
- Food Intolerance Testing

Telephone: 01223 891145

Email: enquiries@lintonhealth.co.uk



COUNTRY MATTERS

Text by Oriel O'Loughlin, illustrations by Maureen Williams

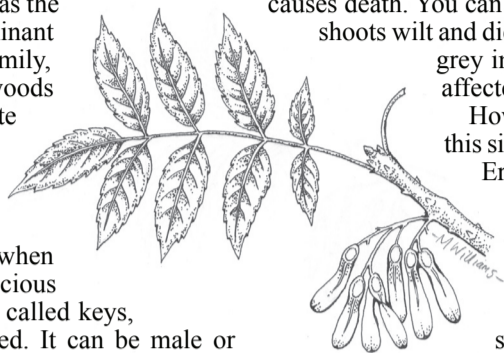


Ash Come Back

NEWS stories about wildlife can often be as depressing as politics. Disease, drought, disappearance of habitat, extinction of species, and so it goes on. Last month in the *Linton News*, there was a positive story about elms. The story of the ash may not sound too promising when all we hear about is ash dieback, but there must be something hopeful somewhere.

The ash is one of our most common trees – Linton has loads. For many centuries it was the ash and not the oak that was our predominant wood resource. It is part of the olive family, tall, graceful, and forming a canopy in woods with pale brown bark and distinctive pinnate leaves. It is the most easily identifiable tree in winter due to its smooth twigs with their large, velvety black buds. The leaves emerge last of all trees in the spring, and unusually it loses them when they're still green. In some years, the dioecious ash produces thousands of winged fruits called keys, and in others it frankly can't be bothered. It can be male or female, or both, and can change its gender from year to year. We humans are clearly behind the curve. Its pale, elastic, split-resistant shock-absorbing wood has been used for tool handles, pick axes, shovels, oars, hammers, and knife blocks for centuries, and even now Morgan use ash frames for their cars.

So how is it that this magnificent species can succumb to a wretched fungal disease called *Hymenoschyphus Fraxineus*, commonly known as ash dieback, visible by leaf loss and crown die back? The Woodland Trust warns that it will kill 80% of our ash trees, change the landscape forever, and threaten the many species which rely on it. The fungus originated in Asia, but it



doesn't harm Chinese ash trees because they are immune. It probably came to Europe via sapling imports, and was first named in 2006. The fungus overwinters in leaf litter on ash stalks, and the spores spread up to 10 miles between July and October, landing on leaves. These spores stick to the surface of the leaves and then progress further into the leaf and beyond. The fungus grows into the tree, blocks its water transport system, and eventually causes death. You can see the leaves wilt and blacken, the new shoots wilt and die back, and the inner bark looks brownish grey instead of pale. Young trees are the worst affected - soul destroying to watch.

However, a bit like Covid, we can adapt to this situation and mustn't lose heart completely. Eradication of the fungus is not possible, and we have to get used to the ash making up a smaller percentage of our trees. We have banned sapling imports as part of improvements to biosecurity, we are replacing ash with oak, rowan, beech and sycamore, and we are researching types of ash showing strong resilience. It is hugely time consuming, and therefore impractical, to destroy all dead ash trees and leaves, and in any case we need to maintain any potentially tolerant ash trees – the trees that survive will lead to future ash recovery. There is a citizen science project called *Observatree*, where volunteers are trained to spot pests and diseases to help tree authorities identify and manage outbreaks as early as possible.

Over the centuries, nature has suffered outbreaks of all manner of evil. I suppose we just have to do what they always say, keep calm and carry on.

News from the Infant School

WELL, here we are at the beginning of October and the summer holidays seem a distant memory now. Everybody returned to school rested and refreshed, lots of shiny shoes and smart uniforms, ready for the challenges the new year will bring. We were delighted to welcome our new children to Foundation Stage. They have all settled into school life and are enjoying making new friends and exploring new equipment.

We must thank those of you who have offered support following the recent vandalism of our Wildlife area. We hope to repair and improve the area over the coming months, ready for the signs of spring.

The children are all part of a huge moment in history, following the death of Queen Elizabeth II. In school, we held special assemblies, shared memories and thoughts, and gave the children time to talk and reflect on the Queen's life and the new King.

Although we have only just started this academic year, the admissions window will soon be open for children due to start school in September 2023. If you think Linton Infant school is the place for your child, we are holding some sessions for you to come and see for yourself.

Tuesday 8th November, a session at 10am-11am.

Thursday 10th November, a session at 10am-11am.

Monday 14th November, a session at 1.30pm-2.30pm.

The places on each session are limited so please phone the school office to book a place, 891421. We look forward to seeing you.

Kelly Harries

Autumnal reads at the Library

OUR *Guess the Gadget* competition proved popular and resulted in seven winners who correctly identified all the gadgets – well done! Congratulations also to the 75 children who signed up to the *Summer Reading Challenge*. By now, those who completed the challenge will have received their medals and certificates. If you were not able to attend our Presentation Ceremony, call in to pick up yours now.

We will be celebrating *Libraries Week* from 3rd to 7th October; the theme this year is *Lifelong Learning*. Do come along, whether you are a regular user or haven't been for a while, and help us celebrate. We have a special *Knit and Natter* poppy-making session on Tuesday 4th at 2pm, so this is your chance to try your hand at crochet or knitting. There will also be a Digital Buddy session on Thursday 6th from 2pm-3pm, a drop-in session for anyone who has IT queries or would like to find out more about digital learning.

Our next *Engage* session takes place on Monday 10th. We will be hearing about Reach Community Projects from 2pm, followed by refreshments. All are welcome. At our last meeting we enjoyed learning about beer with Wylde Skye Brewing. And yes, there were samples. Story and Rhyme time will be 10.30am – 11am on Tuesday 11th for our younger members. As the nights get cooler, come and choose some autumnal reads for cosy autumn nights. We change our displays regularly if you need inspiration, or ask staff for ideas.

Opening hours: Tuesday 10am-5pm; Wednesday 4-7pm; Thursday 2-5pm; Friday 10am-5pm; Saturday 10am-1pm.

General enquiries: your.library@cambridgeshire.gov.uk
Customer Services (regular office hours): 0345 045 522
Lindsay Healy & Ann King, Library Assistants

POT POURRI 208

The Magic Square that is less than One

CONSIDER a 3x3 row and column square. The following fractions are entered:-
Row 1 Column 1 = 1/6, Row 2 Column 1 = 1/8,
Row 3 Column 1 = 1/3, Row 3 Column 3 = 1/4.
The other 5 cells are to be filled with fractions that ensure that all 3 rows & columns add to the same total along with the two diagonals.

Pot Pourri 207 - Numbers Letters

A=1, D=5, E=9, L=2, M=8, N=4, O=7, P=0

Girlguiding Linton District

IT IS with profound sadness that we remember the death of our Patron her Majesty the Queen. It is with fondness and admiration that we also remember 1st Buckingham Palace Guides being set up, so Princess Elizabeth, as she was then, could join a Guide unit, and her sister Princess Margaret became a Brownie. Her family are still members today. What an amazing, diverse guiding family we have. We have had over 10 million girls join us, and we currently have members in 150 countries worldwide. All this is thanks to our wonderful volunteers, both in units, districts, divisions, counties, our nine regions, and our national headquarters in London. Not forgetting our five world centres: Pax Lodge in London; Our Chalet in Switzerland; Sangam in India; Our Cabana in Mexico, and Kusafiri, Africa.

Our Guide and Ranger leaders have just come back from an action packed water weekend at Grafham Water with girls from all over east Cambridgeshire, who sailed, kayaked and enjoyed a host of other activities throughout the weekend. Our Brownies will have a chance to sleep under the wings at Duxford in the spring with Brownies from all over our County too. What a fantastic bunch of volunteers and girls we have. All our units have an action packed term ahead. From the youngest Rainbow to the oldest Trefoil member there will be no end of activities taking place both indoors and out.

Come and join in the fun and have your own guiding adventure. Rainbows 4-7, Brownies 7-10, Guides 10-14, Rangers 14-18, Inspire 18-26 and Trefoil Guild 18+.

Louisa Powell-Owens
lintondistrict@gmail.com
www.girlguiding.org.uk/interested



Linton Camera Club Annual Exhibition

Saturday 8th October 10am - 4pm
Linton Village Hall - Coles Lane

The members of the Linton Camera Club are pleased to present an exhibition of their work.

ADMISSION FREE

Refreshments - Card Sales - Raffle

MALLYON & DONALDSON

MASTERS OF MODERN AND TRADITIONAL BUILDING

contact@mallyondonaldson.com

01223 290030

07885 367112

Extensions - Alterations - Repairs - Hard Landscaping

Singing Lessons

Sarah Rosewell
BA (Hons) Music

Individual singing lessons available for all ages and abilities

Whether towards exams or purely for pleasure

* CRB Checked

* Based in Linton

For more information contact:
Sarah on 01223 894861

Email: sarahrosewell@hotmail.com

Cambridge Art Makers

A friendly and inspiring workshop and studio. Expert tutors offering a diverse array of dynamic, engaging creative courses.



Make time for Making!
Claim your creativity it's good for you!

6 Lintech Court, Linton
www.cambridgemakers.org



3 OFFICES IN 3 COUNTIES

- Residential Conveyancing
- Matrimonial & Family Law
- Wills, Tax Planning & Probate
- Employment Law
- Dispute Resolution
- Commercial Property
- Trusts

We have the experts to assist you when you really need us.

Saffron Walden, Essex 01799 523441
Haverhill, Suffolk 01440 702485
Sawston, Cambs 01223 832939

enquiries@adams-harrison.co.uk
www.adams-harrison.co.uk

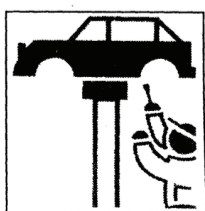
LINTON VILLAGE MOTORS

(situated in Great Abington opposite Granta Park)

www.lintonvillagemotors.co.uk

Tel: 01223 830550

- MOT testing
- All makes of vehicles serviced and repaired
- Tyres at competitive prices
- courtesy car provided
- Polite and friendly staff



Mon-Fri: 8.30am-5.30pm Sat: 8.30am-12.30pm

COOPER BARNES AUTOMOTIVE

Family run body shop at the Grip, with over 40 years experience in the motor trade

Body Repairs, Accident damage Repairs, Servicing, MOT's Alloy Refurbs & Air-Con Servicing
Manufacturer and Insurance approved

2, The Grip Ind Est., Hadstock Road, Linton, Cambridge CB21 4XN
• 01223 880603
• repairs@cooperbarnes.co.uk



www.cooperbarnes.co.uk

BRICK MARKETING
Injecting power into your marketing

brick-marketing.co.uk
hello@brick-marketing.co.uk

MOPS HAIR SALON

HAIR BY JO DENNY
WOMEN | MEN | CHILDREN
CUTTING & COLOURING

41 LINTON HIGH STREET
(BEHIND BOSWELL'S BAKERY)
t: 01223 893 285

District and County Councillors' report September 2022



Cost of Living

Many people are now feeling the pinch of the cost of living crisis. In the South Cambs magazine this month there is a two page spread of information that may be of use, as well as content on the website that points people towards support available – including with energy bills or ensuring that people know what they are entitled to (Universal Credit, childcare costs, Disability and Carers benefit etc) and then encourages them to claim these entitlements – specifically aimed at Local Council Tax support and Discretionary Householding payment. www.scambs.gov.uk/cost-of-living-support/

City Access Consultation

A 'Sustainable Travel Zone' road user charge has been put forward by the Greater Cambridge Partnership (the body currently implementing the upgrades to the A1307) for private vehicles between 7am and 7pm on weekdays. The plans are part of a package to improve public transport, reduce congestion in the city and help the environment through lower emissions. A £5 congestion charge to drive into and around Cambridge is being considered as part of a 'once in a generation' plan to shake up how people travel during the working week. Whilst driving in the city could be more expensive, the GCP has revealed plans to make buses cheaper. Flat fares have been proposed to be introduced. In Cambridge, a bus ticket could cost £1 to travel in the city with a ticket in the wider 'travel to work' area (where we are) to cost £2. This is still very much a proposal at this stage and will be publicly consulted on when/if the plan is adopted on September 8th. What this could mean for us, is cheaper, more frequent bus travel. We would like to hear your thoughts on this, as we represent the views of the electorate here, so please do let us know.

4 Day Week Trial

The District Council has announced that they are going to trial a 4 day working week, initially for 470 office workers. The trial will run for three months from January 2023. Detailed planning is underway to improve working practices and to support staff to work more efficiently. It is expected that productivity will be maintained or bettered, detailed performance measures will be put in place to judge the success of the trial. If the trial is successful, it will be extended for a further year, then reviewed again. If it is not successful, they will revert to the five day week. South Cambs will be the first public sector authority to run a trial. Evidence from the private sector shows that productivity tends to increase, job satisfaction, job retention and recruitment

all improve. That is what is expected to be achieved, but it is a trial and we will wait to see the outcome. The Council has already dramatically changed the way it works, due to Covid, and continues with most people working from home. This is the next step, but it will only be fully adopted if it can be shown that it works. The project is being managed by their own senior staff so there will not be a big bill for consultants. The expectation is that around £1 million can be saved if staff retention and recruitment improves leading to a reduction in reliance on expensive agency staff.

Recycling of Electrical Items

South Cambs has installed eight new pink recycling banks for small electrical items such as hairdryers, toasters and phones. These are all over the District and Cambridge, these being the locations:
Gwydir Street car park, Cambridge
Lammas Land car park, Cambridge
Abbey Pool car park, Cambridge
Chesterton Road public toilets, Cambridge
Morrisons car park, Cambourne
Tesco car park, Bar Hill
Village car park, High Street, Melbourn
Tesco car park, Fulbourn

Free access for Community groups to Wimpole Hall

Wimpole Estates is offering local community groups free admission to the estate and its facilities, recognising that National Trust membership can be expensive and exclusionary. Each pass issued under this initiative will be for up to 16 people. If you know of any groups that may want to take them up on this offer, please write to wimpoleforeveryone@nationaltrust.org.uk

20mph Schemes

A County Council working group is finalising criteria for assessment of 20mph applications. It has already decided to remove the requirement that existing speeds in an application area should already be 24mph or lower. Fourteen 20mph application from this year's Local Highways Improvement (LHI) bid have been moved from the LHI process to be the first cohort of schemes to be developed under this new budget.

Contact Information

District Council – John Batchelor – johndbatchelor23@gmail.com
District & County Council – Henry Batchelor – henry-

T1 Linden - Shorten over extended branches by 2-2.5m to rebalance crown, lift over drive and roof to 4m and thin by 20% by removal of epicormic growth.
83 High Street Linton Cambridgeshire CB21 4JT
Ref. No: 22/1037/TTCA | Validated: Tue 13 Sep 2022 | Status: Awaiting decision

Non material amendment of reserved matters application S/2501/19/RM (Approval of matters reserved for appearance landscaping layout and scale following outline planning permission S/1963/15/OL for residential development for up to 55 dwellings with landscape buffer and new vehicular access from Bartlow Road) handing of the garage and house position to plot 51 and associated landscape changes
Land To The North And South Of Bartlow Road Linton CB21 4LY
Ref. No: S/2501/19/NMA1 | Validated: Thu 15 Sep 2022 | Status: Awaiting decision

Non-material amendment on planning permission S/0818/19/FL to enlarge entrance hall, include 2no. roof lights and convert garage to habitable space with associated alterations
2 The Ridgeway Linton Cambridge Cambridgeshire CB21 4NA
Ref. No: S/0818/19/NMA1 | Validated: Fri 16 Sep 2022 | Status: Awaiting decision

Installation of solar panels to the roof of the garage and erection of greenhouse in the garden.
5 The Grip Linton Cambridgeshire CB21 4NR
Ref. No: 22/03139/HFUL | Validated: Mon 05 Sep 2022 | Status: Awaiting decision



Linton Fireworks is sponsored by:

Sanofi Haverhill, Hockeys Estate Agents, McKenzie & Hayward, Cooper Barnes, Daryl Nantais Gallery, Linton Family Chiropractor Clinic, Nextnorth Website, Brick Marketing, Linton Kitchen, Boyz to Men, and Camgrain.

A J Pest Control Ltd

Local Professional Service
Member of NPTA
Domestic/Commercial/Agricultural
Experts in all areas of pest control

Mice, Rats, Wasps, Bees, Hornets, Moles, Moths, Ants, Bed Bugs, Fleas, Flies, Squirrels, Birds, Woodworm.

Tel: 01799 542 505 Mobile: 07855478824
E-mail: info@ajpestcontrol.com www.ajpestcontrol.co.uk



Footcare Specialist

Indra Narine
indra1972@hotmail.co.uk
BSYA Qualified
In the comfort of your own home

General foot healthcare, nailcare, hard skin removal, ingrown toenails & corns.



Tel: 07590 286 522

THE DOG & DUCK

63 HIGH STREET, LINTON
TEL: 01223 890349

LIVE JAZZ
FIRST SUNDAY OF EVERY MONTH FROM 2:30PM

BREAKFAST
EVERY SATURDAY 10AM-11:30AM

FISH & CHIP WEDNESDAYS
IT'S BACK: EVERY WEDNESDAY

FIND OUT MORE ON OUR WEBSITE
WWW.DOGANDDUCK-LINTON.CO.UK



'BOOK NOW FOR CHRISTMAS'

LINTON PAVING COMPANY

YOUR LOCAL LANDSCAPING
BLOCK PAVING & PATIO
SPECIALIST.

PROPERTY MAINTENANCE
Int/Ext Painting, General Repairs
FRIENDLY SERVICE.
FREE QUOTATIONS
Tel: Andre Jacobs

Mob: 07765 594398
Office: 01440 702498



EDWARD'S GARDEN'S

Garden maintenance, restoration, clearance, etc,
Free initial advice

07768701010
edwardsgarden84@gmail.com



ProClean

'Your Complete Cleaning Solution'

- *Carpet Cleaning *Rugs *Stain Removal
- *Car Valeting *Caravans *Motor Homes
- *Upholstery Cleaning *Stain Protection
- *Floor Cleaning / Scrubbing / Sealing / Polishing
- *Pressure Washing of Patios Paths & Driveways
- *Domestic Cleaning * Top Ups & One Off Cleaning
- *Gutter / Fascia Cleaning

*Contract Office Cleaning (Flexible Options)
TEL: 890433 Mob: 0777 375 8355
74 Bartlow Rd, Linton, Cambridge, CB21 4LY

Linton Speedwatch - Monthly Summary

Month:	August 22						
Date:	Time:	Location:	Traffic Direction:	Speed Limit:	Traffic Volume:	Vehicles Speeding:	Speeding %: Av. Excess Speed
3rd August	6:45am	Horsebeath Road	incoming	30mph	51	4	7.80% 35.50mph
9th August	7:00pm	High Street	outgoing	20mph	78	49	63% 27.56mph
11th August	6:45am	Hadstock Road	incoming	30mph	65	22	34% 40.80mph
13th August	10:15am	High Street	incoming	20mph	97	17	17.5% 26.40mph
16th August	4:00pm	Back Road	incoming	30mph	163	4	2.45% 36.50mph
18th August	7:00am	High Street	outgoing	20mph	174	16	9% 25.90mph
20th August	10:30am	High Street	outgoing	20mph	115	15	13% 25.90mph
23rd August	6:45am	Horsebeath Road	incoming	30mph	142	16	11.26% 37.30mph
24th August	6:30pm	Hadstock Road	outgoing	30mph	74	19	25.7% 37.90mph

Source: Linton Speedwatch Team
Granthamster Hotels supports Linton Speedwatch

Thank You, Ma'am. God Save the King!

ALTHOUGH some time has passed since the nation said farewell to Her Majesty Queen Elizabeth II, we take this opportunity to show our respects and gratitude for her seventy years of loyal service to our country, the Commonwealth and, indeed the World. Many parishioners have expressed their feelings of loss and grief, losing any constant in our lives is hard; losing our monarch, although expected because of her great age, was still a sudden shock.



Her Royal Highness Queen Elizabeth II

Through the tradition of the mourning period and the protocols that, thanks to modern technology, we have all been able to witness, the public services have time to pause and re-set, ready for the next chapter in our history.

On 8th of September 2022, HRH Prince Charles, The Prince of Wales awoke in Scotland with no expectation that by the end of the day he would be The King. He has, in the past few weeks, made loving tributes to his mother and solemnly taken on the duties bestowed to him by his succession. There is both change and continuance in all of this.



HRH Prince Charles was officially proclaimed His Majesty King Charles III on Saturday 10th September 2022 at St. James Palace in London. The symbolic high point of the accession will be his Coronation, which after our sadness now, will be a chance for celebration.

God Save the King!
Linton Parish Council

Dates for your Diary

THE NEXT Full Council meeting will follow on 20th October 2022. The meeting will take place at the Cathodeon Centre. Members of the public and press are welcome to attend. If you are unable to attend and would like to raise a subject with the Linton Parish Council please contact the office on 01223 891001 or email us at enquiries@linton-pc.gov.uk Clerk

Grants Available! Don't miss this opportunity.



IN THE current economic climate, we could all do with a little extra help, the Linton Parish Council (LPC) expect that local groups and organisations will be no exception. So, it gives us great pleasure to be able to offer some financial support to those that help to contribute and build the community for the year 2023/24.

- The Parish Council can offer funding to a wide variety of clubs and activities which include, but are not exclusive to:
- Sports Clubs (for equipment and sports kit)
 - Nurseries and Pre-Schools (for equipment and learning materials)
 - Public counselling (age related support groups or medical services offering support to Parish of Linton)
 - Public Events.
 - Public Arts projects.
 - Local Volunteer Groups and non profit organisations that aim to protect or enhance the village and surrounding area.
 - Local community buildings.
 - Public educational programmes.
 - Local Youth support groups.
 - Funding support to enhance areas within the village for specific projects.

Application forms can be found on the Parish website at <https://linton-pc.gov.uk/funding> these can be completed online or a hard copy can be delivered to the Parish Council office along with a copy of the organisation's accounts information by the 31st October 2022. Decisions on grants will be made on the information provided so to allow the Parish Council to fully assess the application please provide as much information as possible on how your project can contribute to the community. Alternatively, if you would like any further information, please contact the office via email to enquiries@linton-pc.gov.uk or via telephone on 01223 891001.

The budget that the Parish Council allocate for this "spending pot" for the financial year 2023/24, formally termed as S137 and Independent Grants, is finalised in the November Parish Council meeting. Therefore, it is paramount that groups apply for funding before 31st of October to ensure that there are sufficient monies requested as part of the annual precept application submitted to South Cambridgeshire District Council (SCDC) Any applications received after the 31st October deadline can not be guaranteed as they would not

Don't miss this opportunity for funding support for the financial year 2023/2024.

RFO - Linton Parish Council

Planning & Meeting Update August - September 2022

PLANNING Updates

What is the point of Planning Conditions?

As we write, we are waiting to hear from the SCDC Ecology Team about actions that are to be taken on the Bartlow Road site following concerns that have been raised over the trees and ecological buffer on the site.

Our fears in the Parish Council are that the conditions that were put in place to protect the landscape and ecology of the area, are not going to be enforced by SCDC.

The two horse chestnuts are still at risk, either to make way for the electricity supply to the site, or simply because they are conflict with the new housing. We have asked to see the proposed route for the electricity supply as both trees back onto gardens on Fincham's Close, so there is no obvious route through to the site - have any residents been contacted by UK Power Networks about a cabling route in that area? Despite the fact that the trees have been on the site for years and have been included in the Landscaping, ecology and the general environmental management plans for the development, we have been warned that the Tree Team and Ecology Team may not fight for their survival in the longer term.

Visitors to the Pocket Park may have noticed that large number of trees have been felled on the riverbank between the site and the river. According to the environmental management plan, there was supposed to be a 30 metre (m) buffer between all construction works and the river. A small area was anticipated to be cleared to allow the surface water drainage scheme to be installed - with the surface water being controlled by a drainage pond and then being released into the river at "green field rates" (in other words as though the field was still in its original state without the houses), but two large areas have been cleared with no explanation. There are also the ever-increasing mounds of soil that are sitting well within the 30m buffer zone. These are added to by heavy construction equipment that is therefore also driving within the buffer zone.



Ecology Protection Zone?

In theory, breaches of Planning Conditions should be investigated and enforced by the Planning Officers. The temporary 6-month Tree Protection Order could be overruled by UK Power Networks if they need the land to route their cabling - but why wasn't the supply of services scrutinised before approving the landscaping and ecology plans? The encroachment of work in the 30m buffer zone including the huge mounds of soil and now the removal of several large trees will already have caused irreparable damage to the local biodiversity and no action has been taken in months. Hopefully next month's update will bring positive news.

Linton Parish Council Planning Committee

A & R
PLASTERING

All aspects of plastering undertaken:
Plasterboarding
Rendering
No job too small
30+ years experience
Free estimates

Tel: 01223890228
Mobile: 0774 8627920

DESIGNER DRAPES

Local Curtain & Blind Specialist

www.designerdrapes.co.uk
designerdrapes2@gmail.com

01223 890556

Allstar Cleaning Ltd
www.allstarcleaning.me.uk

Your Local, Professional, Carpet and Upholstery Technician Dean
16 years' experience
Package to suit every level: Basic, Pet Treatment or Carpet Protector

cleansmart trained technician
Carpet moth removal and prevention
Upholstery and rug cleaning services

Contact Dean on 01223 654652 or info@allstarcleaning.me.uk to make an appointment.
Allstar Cleaning, 14 Hillway, Linton, CB21 4JE

FERNWEH
Homesick for places never seen

15th Sept - 22nd Oct 2022
Opening hours 10:00 - 5:00
Wednesdays, Thursdays, Fridays, Saturdays or by appointment

94 High Street, Linton, Cambridgeshire CB21 4JT www.galleryabove.co.uk
T: 01223 894899 M: 07909981827 E: info@galleryabove.co.uk

Westlakes
Painting & Decorating

Adam
adam_westlake@hotmail.com
Interior and exterior

07917 890752

ClearTax
& ACCOUNTING LTD

Quality, friendly accounting services and taxation advice.
Sole trader and small company specialist.
Free initial consultation.

▼ We have a new address ▼
Unit 1, The Old Stables, Yole Farm, Linton Road, Balsham, CB21 4HB.
01223 772326
janine@cleartax.co.uk
www.cleartax.co.uk

PSH Electrical Services

Rewires, New builds, Extra lights, Extra sockets, Repair works, Garden lighting, Showers

Registered NIC EIC domestic installer
email pshelectrical27@gmail.com
telephone 07867980738

CHRISTOPHER MARKHAM
HOME & GARDEN SERVICES

Interior/Exterior Decorating
Fencing, Guttering
Turving, Garden Clearance
Lawn & Hedge Cutting
Decking & Patio Cleaning
Patios & Driveways

Call on (01223) 892889 or 07973 294946
No job too small...

PALMER & SON SCAFFOLDING LTD

A local family run business with over 30 years' experience in the trade.

All enquiries welcome with a free quotation on all jobs.

All aspects of scaffold undertaken; no job too small.

Contact Martin on:
Tel: 01223 892145
Mobile: 07970348182
palmersscaffolding@outlook.com

GARDENER
N.C.H. QUALIFIED

All garden maintenance including:
Weeding - Mowing
Hedge cutting - Turfing
Garden clearance
Shed /fence treatment
Hard/soft landscaping

For a friendly professional service please call:
Darryl Tilling
01223 892133
or
07932 021277

ABBREVIATED minutes of the Linton Parish Council meeting held on Thursday 18th August 2022 at the Cathodeon Centre.

Acceptance of Apologies for Absence.

The Clerk gave valid apologies from Cllr Brian Cox, Cllr Paul Poulter, Cllr Guy Ennew and Cllr Helen Lawrence-Foulds. Cllr Kate Kell proposed the apologies be accepted. Cllr Caitlin Seaward seconded. All Agreed.

Open Forum for Public Participation.

The Chair invited the member of public to address the Parish Council.

The participant raised concerns regarding sewage smells in Lonsdale, adjacent to the point where the foul water connection from the Croudace site joins the main sewer in Lonsdale. This was noticed mainly in the evening, and it was considered that it could be linked to the pumping schedule. The Chair thanked the parishioner for raising the matter to the Parish Council. The Clerk was requested to report the matter to Anglian Water and the Environmental Team and request an urgent investigation.

Matters Arising/Clerks Report.

Update on the variation request to premises licence for Wylde Sky Brewing.

The Clerk updated the Parish Council that the variation of the licence had been granted and that disturbance issues would be monitored by the licensing committee at South Cambridgeshire District Council (SCDC).

Update on the Best Kept Village initiative.

The Clerk and Cllr Carl Cieluch updated the Parish Council explaining that the Best Kept Village initiative no longer operates. Anglia in Bloom is an option for 2024. It was requested that a working group meeting be held to discuss aims and to include the gardening club and those involved in the Open Gardens event in May 2022.

Consideration of the District and County Councillors Report for August 2022.

In addition to the written report from the County & District Councillors, District Cllr John Batchelor reported that he had received complaints about speeding on Back Road, between Symonds Lane and The Woodlands. It was agreed that traffic calming options would be discussed at the Traffic Working Group meeting scheduled to be held on Monday 22nd August 2022.

Committees and Council Representatives.

Working Groups Representatives for 2022/2023 – Invitation to all Councillors to represent the Linton Parish Council on the S106 Working Group.

Cllrs Hine, Poulter, Mannassi, Kell, Bald, Sanderson and Cieluch to represent the Parish Council on the S106 working group. All councillors to be invited to S106 working group meetings.

Working Groups Representatives for 2022/2023 – Confirmation of the existing Councillors who represent the Linton Parish Council on the Event Working Group and invitation to all councillors to join. Cllr Caitlin Seaward and Cllr Carl Cieluch requested to join the Events Working Group.

Risk Management

Consideration for the recommendation from the Finance, Risk & Compliance Committee (FRCC) regarding the review of the Risk Register for the period 2022-23.

Cllr Chris Hine proposed to accept the review of the Risk Register for 2022-23. Cllr Kate Kell seconded. All Agreed.

Planning

"Giving Councils more say on Local Housing" held on 27.07.2022. Cllr Karen Sanderson gave a verbal update on the meeting and advised that many points were similar in structure to the recent meeting of the Cambridgeshire Acre. Karen added that Housing Associations can buy land which can be designated as open space or wildlife areas which encourages engagement with the local community.

Consideration for the recommendation from the Planning Committee in relation to the completion of the Call for Sites survey. District Councillor John Batchelor confirmed that there were approximately thirty new sites in addition to 120 re-submitted with new information. The policy stands to protect villages, due to development being unsustainable and support to be given to de-

velopment opportunities to focus on new towns.

Cllr Chris Hine proposed to accept the recommendation from the Planning Committee that Cllrs Kell and Mannassi complete the Call for Sites survey on behalf of the Parish Council. Cllr John Bald seconded. 7 in favour with 2 abstentions. Agreed.

Bartlow Road

Update on the Bartlow Road development site. Ref S/2501/19/RM.

Cllr Kate Kell updated the Full Council that the appeal is to be run as a hearing and advised that the District Councillor for Balsham had shown an interest in the situation.

Consideration for the recommendation from the Planning Committee for the nomination of Councillor(s) to represent LPC at the hearing once a date has been agreed.

Cllr John Bald proposed to accept the recommendation from the Planning Committee to nominate Cllrs Kell and Mannassi to represent the Parish council at the hearing. Cllr Karen Sanderson seconded. Agreed.

Update on the proposal by Abbey Developments to fell two Horse Chestnut Trees.

Cllr Kate Kell advised that the two Horse Chestnut trees had been awarded an emergency TPO which would protect them for six months and further discussions regarding the long-term retention were continuing.

Horseheath Road.

Update on the land south of Wheatsheaf Barn, Horseheath Road development site. Ref S/4418/19/RM.

Cllr Kate Kell advised that the Surface Water drainage condition had been agreed but not discharged, however no works had commenced on the additional provisions applied to the condition therefore Linton Parish Council would report this to enforcement.

Finance & Accounts

Consideration for the recommendation from the FRCC regarding the Financial Contribution from CCC for the cutting of the verges in the village. Open discussion and Decision

The REsponsible Financial Officer (RFO) updated the Full Council that Cambridgeshire County Council had confirmed that the financial contribution for grass cutting would not be increased. Cllr Chris Hine proposed to reconsider the situation in April 2024 and to ensure new verge cutting contracts were not awarded in September 2023. Cllr John Bald seconded. All Agreed.

Quotations Received

Consideration for the recommendation from the FRCC regarding the RFO's recommendation for Local Handyman Services to complete the New Roads & Streetworks Accreditation (NRSWA) Cllr John Bald proposed the recommendation from the FRCC for Local Handyman Services to complete the NRSWA Accreditation. Cllr Carl Cieluch seconded. 7 in favour with 1 abstention. Motion carried.

Consideration for the quotations received in relation to the Village Ranger contract.

Cllr Karen Sanderson proposed that the Village Ranger contract be awarded to Local Handyman Services. Cllr Chris Hine seconded. 7 in favour with 1 abstention. Motion carried.

Donation Requests

Consideration for the recommendation from the FRCC for a request of funding from Camsight Peer Support Group to support services. Cllr Sharron Parker proposed a donation for £500.00 be awarded to Camsight Peer Support Group. Cllr John Bald seconded. All Agreed.

Churchyard

Consideration for the request from St Mary's Parochial Church Committee (PCC) for approval of signage to be installed in the Churchyard. Cllr John Bald proposed to approve signage within the Churchyard as requested by St Mary's PCC. Cllr Caitlin Seaward seconded. All Agreed.

Disability, Access & Safety

Consideration of the necessity for disabled access to be in place for all Parish Council meetings and the recommendation that it be investigated to ascertain if all future meetings can take place at the Cathodeon Centre. Open discussion and Decision required.

Cllr John Bald proposed that the Cathodeon Centre be approached to request all meetings, including committee meetings of the Linton Parish Council, be held at the venue. Cllr Karen Sanderson seconded. All Agreed.

Coles Lane Car Park

Consideration for the request from a parishioner to install designated disabled parking bays in the Coles Lane Car Park. Open discussion and Decision required.

Cllr Sharron Parker proposed that disabled bays be investigated but these could not be designated to any individual. Cllr Karen Sanderson seconded. All Agreed.

Recreation Ground

Pavilion

Consideration for the requirement to issue written notice to the Linton Granta Football Club due to the current lease expiry on 20th May 2023. Open discussion and Decision required.

Cllr John Bald proposed to issue written notice to the LGFC due to the expiry of the current lease on 20th May 2023. Cllr Sharron Parker seconded. All Agreed.

Camping Close

Consideration of the request from the Linton Fireworks Committee for permission to hold the annual fireworks event on Camping Close on Saturday 5th November 2022. Cllr John Bald proposed that permission be given subject to the Cambridgeshire County Council's approval and weather/ground conditions were acceptable. Cllr Caitlin Seaward seconded. All Agreed.

Environment, Open Spaces & Biodiversity

Update on the meeting held with the SCDC Environmental Team Leader, John Cornell and the SCDC Trees Officer held on Thursday 11th August 2022. Verbal update from Cllr Kate Kell. For Information.

Cllr Kate Kell gave a verbal update of the meeting and written notes were available at the meeting. Items discussed included the Bartlow Road development, Horse Chestnut trees, landscape buffer and Environmental protection zone. Tree Protection Order's for 41 Back Road and 21 Green Lane and the potential for Flemming's Field to be used to off-set biodiversity on future development.

Youth

Consideration of the Monthly Report for the Beacon Youth Trust (BYT) for July 2022 and the quarterly report for first quarter of 2022. Written reports available in the Councillor packs.

Cllr Carl Cieluch raised concerns that the BYT had missed targets for Quarter 1 with 90/100 hours being achieved and that the trend had continued in July with 34 hours out of the 40 required.

Meeting Dates

The next Full Council Meeting will be held on 15th September 2022 at the Cathodeon Centre at 7.30pm to which all Councillors will be summons. For Information. Noted.

Market Square

Update on the first registration of the Market Square & further advice from Holmes & Hill. For Information. Noted.

Cllr John Bald and Cllr Merrie Mannassi confirmed that the Statement of Case plus evidence was submitted to the Land Tribunal on Monday 15th August 2022 by Holmes & Hill solicitors and that a response from the respondent was expected by the deadline on Tuesday 13th September 2022. Clerk.

Full Minutes are available on the Parish Council website. Clerk.

The Village Hall, Coles Lane, Linton, Cambridge CB21 4JS Tel: 891001
 Clerks to the council – Mrs Jenny Seaward & Mrs Kate Dyer.
 Email: enquiries@linton-pc.gov.uk
 Website: www.lintoncambridgeshire-pc.gov.uk
 Facebook: www.facebook.com/lintonpc
 Office open: Monday - Friday 9am - noon.
 By Appointment Only
 Full Council meetings are held at the Cathodeon Centre, commencing at 7.30pm on the third Thursday of the month.

- 24 hour emergency service
- Boiler breakdown and servicing
- Boiler upgrade

KA PLUMBING & HEATING

Office: 01223 890554
 Mobile: 07890 576608
 kaplumbingheating@hotmail.co.uk

Vaillant
 Approved Installer

BEE YOGI LIZ
 YOGA CLASSES

Every Thursday £10 per class
 Linton Village Hall Contact to book:
 07752365902

Gentle Flow Yoga 6:15 - 7:15 pm	Power Flow Yoga 7:25 - 8:25 pm
------------------------------------	-----------------------------------

200 hr qualified yoga teacher.
 1:1 sessions available.
 @bee_yogi_liz

SMG
 CARPENTRY
 — & CONSTRUCTION —

CARPENTRY OUTBUILDINGS
 EXTENSIONS RENOVATIONS

07816 263 596
 hello@smgconstruction.co.uk
 www.smgconstruction.co.uk

lintonerown@yahoo.com www.crownatinton.co.uk

The Crown Inn
 Happy Days

Monday Fish & Chips £8
 Tuesday Steak £10
 Wednesday Bangers & Mash £6.50
 Thursday Pizza Night 25% discount
 Friday Burger Night £10
 11, High Street, Linton, Cambs.
 01223 891759

The Darryl Nantais Gallery
 Proprietor: Karl Backhurst
 Fine Art, Framing & Restoration

We offer a wide selection of artwork, contemporary & traditional, local & international, including paintings, prints, ceramics, glassware, sculptures & jewellery. The Gallery also offers bespoke framing, picture restoration and cleaning.

Darryl Nantais Peter Corr Magdalena Morey

Established in Linton in 2001 and in Auchterarder, Perthshire in 2019 as DNG Contemporary Art. We also exhibit across the country at Art Fairs as Linton59. A warm welcome is guaranteed wherever you find us.

59 High Street, Linton, Cambridge CB21 4HS ~ 01223 891289 ~ linton59.co.uk
 For regular news updates follow & like us on Facebook & Instagram
 Tuesday to Saturday 10am to 4pm

G. DYE & SONS
 GENERAL BUILDERS,
 GROUNDWORK & MAINTENANCE,
 CONSERVATORIES & UPVC WINDOWS, KITCHEN & BATHROOM REITS

ALSO INTERIOR & EXTERIOR DECORATING
 REFERENCES AVAILABLE

For enquiries please call
 Mobile:
 07961 342887
 Tel: 01223 892089
 georgedy738@btconnect.com

Free Estimates

Bentens
 Accountants and Tax Advisors

Abbey House, 51 High Street
 Saffron Walden

01799 523053 www.bentens.co.uk