

They shall grow not old as we that are left grow old

Arthur Beeton
Edward Biggs
Herbert Biggs
Edward Casbolt
Rowland Clarke
Albert Cottage
Edward Cottage
Frank Cottage
Stephen Cottage
George Day
Thomas Dennis
Arthur Dyson
Herbert Dyson
William Dyson
Charles Eley
Stanley Ely
Charles J Ellis
John Fincham
George Fitch
Jonas Free
Frederick Freestone
Henry Goodwin
Herbert Green
Alfred Head
Owen Hill



Edward Hill
Frederick Hills
James Hills
John Housden
Thomas Jacobs
James Kidman
James Kidman
Harry Morley
Sydney Morley
Edward Noakes

Clifford Norden
Frank Norton
William Nunn
Ernest Perry
Alfred Ruse
Cyril Seeley
Arthur Shore
George Shore
Henry Webb
Albert Whiffen
Septimus Wright
Frank Beeton †
Gilbert Brown †
Harold Colvill †
Harold French †
Herbert Garner †
Colin Hooper †
Gilbert Jarvis †
Reginald Norton †
Alan Stinton †
Ernest Stock †
Leslie Stock †
Sidney Tofts †
Maurice Wright †

The men of Linton who fell in the first and second (†) world wars, illustration by Maureen Williams

Remembrance Day like never before

SO much has changed in the last year, and with each passing week comes more uncertainty. It goes without saying that the normal ceremonies of the year are affected too, and the usual large Remembrance Service at St Mary's on the afternoon of November 8th sadly cannot happen. The ceremony at the war memorial will be much shorter than usual, with just a few local representatives from the parish council and the armed forces organisations laying wreaths on behalf of us all. We ask

people not to attend at the cemetery, but I do hope you will take the opportunity to read this list of the village's fallen at home, and remember them with thanksgiving before God in two minutes' silence on November 8th or 11th, praying for peace in the world. We shall also put posters around the village with QR codes which will give access to Remembrance prayers for all ages to use. In the churchyard, we are building a cairn of remembrance, starting on November 1st, when we are inviting all who mourn loved-

ones to bring stones with their names on them to the foot of a cross, and it would be very appropriate around Remembrance Day for people to surround it with poppies and poppy crosses too. These are available online from The Poppy Shop at www.britishlegion.org.uk if your normal source of poppies is unavailable this year. The prayers which will be used can be found to the right.

Maggie Guite
Rector of
St.Mary's
Linton

THE ACT OF REMEMBRANCE

Let us remember before God,
and commend to his sure keeping:
those who have died for our country in war;
those whom we knew, and whose memory we treasure;
and all who have lived and died in the service of mankind

They shall grow not old, as we that are left grow old; Age shall not weary them, nor the years condemn. At the going down of the sun & in the morning We will remember them.

there follows a two minute silence

Almighty & eternal God, from whose love in Jesus we cannot be parted,
either by life or death,
we give you thanks for all whom we remember this day,
and ask that you would so work your good purposes in us that we, with them, might know your eternal joy. Amen

God, our refuge & our strength,
Bring near the day when wars shall cease
and poverty & pain shall end,
that earth may know the peace of heaven
through Jesus Christ our Lord.

And may Almighty God bless and keep us always. Amen.

A differently dark world

OF all the ways in which the global pandemic has impacted on our lives, the cancellation of remembrance events could hardly be classed as significant, yet there is something uniquely sad about the inability to gather in memory of those whose sacrifice made possible the world in which we now live. This year, as we cast our minds back to the terrible events of the past, we will probably find it a little easier to imagine, and in some cases remember, the darkness that enveloped the world at that time. Whilst it would be injudicious to compare current events with the wars which claimed so many lives, it is without doubt that we face the most dire global situation since the last of

those conflicts ended some 75 years ago. This November more than any other, we not only honour those to whom we owe our way of life, but we take strength from them too. From those who faced trials much greater than our own, and those who were left behind to cope with the trauma, deal with the loss, and pick up the pieces. We know that the names on this list will mean a great deal to many of our readers. There will be grandfathers, fathers, uncles, and perhaps even brothers and friends among these names. In remembering them, may we find hope for brighter days ahead.

Jack Glossop
Editor

The Marsh Mail

IN the absence of being able to showcase the College in the usual way at the start of October, we held a virtual Open Evening including a series of films that help to capture life at LVC and feature great contributions from some of our students and families. Materials are available to view on page 6-7 on the College website (www.lvc.org) with a recording of a live Q&A webinar with members of the College's Senior Leadership Team. We have welcomed three teachers to the College's Senior Leadership Team this academic year: George Jenkins, who has joined us from a school in Bethnal Green and is leading on behaviour for learning, Cameron Fehr from another Trust in Cambridgeshire who is our new Head of Maths and assessment, and Anna Garner, who returns to teach at LVC as our Director of Inclusion. Anna Garner joins us as SENCO as well as having oversight for Alternative Provision and attendance. Anna is leading developments in special educational needs at the College, including establishing Thrive nurture classes and enhancing the quality of our provision. In the current context, there is even more demand for specialist support for young people to be able to address specific learning and emotional needs. We are currently advertising for a Higher Level Teaching Assistant to join the Learning Support Team at LVC to contribute to the catch up curriculum and targeted intervention. We are really keen to make effective use of what was originally the Warden's House and more recently a caretaker's onsite residence. The property needs some adaptation and renovation to make it fit for purpose as an educational building. With regular fundraising opportunities through the Friends of LVC being restricted for the time being, we would like to run some crowd funding through the College's Just Giving website. The funds raised would contribute to the cost of refurbishing the house and creating a welcoming learning space for our most vulnerable students and those in need of more individualised support.

If you are able to contribute financially, we would be very grateful for your support via: www.justgiving.com/crowdfunding/lvcinclusionproject. Alternatively, you may have trade skills that you could offer the College to help us with this project by contacting Reception@lvc.org.

Helena Marsh

A small token of our thanks



THE Linton News committee presented this engraved bowl to Fran Armes last month to mark her retirement as Editor after seven years at the helm. Having just produced my first two editions of the newspaper, I cannot express strongly enough what an accomplishment that was.

Jack Glossop



The news in pictures:

SOLSTICE, the Southern Ground Hornbill, works the camera at Linton Zoo. Known for their amazing eyelashes, several Hornbills have hatched at Linton and are part of the European breeding programme. Southern Grounds are classed as endangered in South Africa and Namibia and whilst they can live up to 70 years old, fewer than one percent make it past the age of five in the wild. An adult male can reach up to one metre tall, and while their necks will stay red all their lives, females like Solstice take on a rich blue tone around the throat. The Zoo is cur-

rently open as usual and running an online ticketing system, ensuring that guest arrivals are staggered throughout the day. Although they would normally only open at weekends after the October half term holiday, the ticketing system should allow them to welcome visitors on some of the nicer winter weekdays. Further information is available on the website, including how to sponsor animals and buy gift vouchers. Lintonians, get your wellies on and go and see Solstice.

Linton News Team
Picture: Linton Zoo

November recipe: Thick Orange Fool

THIS Thick Orange Fool will disappear quickly, so make plenty of it! A delightful autumn dish that can be made in advance and stored in the fridge overnight. If serving to children, leave out the Grand Marnier.

You will need:

3 oranges, juice & zest
1 lemon, juice & zest
100g caster sugar
300ml double cream
500ml half fat crème fraiche
50ml Grand Marnier
Winter berries or shaved chocolate to garnish

Method:

In a large bowl, place the orange juice, lemon juice and all the zest and sugar. Stir well until the sugar dissolves.

In a separate bowl, pour the double cream, crème fraiche and half of the orange juice mixture made above. With a hand mixer, whisk until it begins to thicken, then add the remaining juice and Grand Marnier and whisk again until the mixture forms soft peaks.

Spoon into glasses and garnish with shaved chocolate or winter berries.

Chef Albert

Linton Granta Playgroup set to close after 40 years

WITH a heavy heart the decision has been made to close the doors of Linton Granta Playgroup at Christmas. Our beloved playgroup has been a big part of the community for over 40 years. It has evolved over that time from a group of local mothers setting up a safe place for children to develop and play, to a facility providing early education. Our sister toddler group provided a meeting place for young families to develop lasting friendships.

A big factor in our closure has been Covid: with much uncertainty around whether we could reopen in September, this resulted in a lack of families being able to commit to using us as a provider. We would like to thank all of the families that have chosen us to care for their children, and the parents and carers that have been on our committee over the years, for all of their tireless support and dedication. I would personally like to thank the loyal and committed staff for their many years of service, as a staff team our Playgroup is like a second home with many children believing we do actually live there! We have many happy memories to reflect on and have pride in seeing children in and around the village that started their education with us.

Janine Polley, Manager
office@lintongrantaplaygroup.org.uk
891233 EXT381

Don't forget to tell our advertisers where you found them!

- 24 hour emergency service
- Boiler breakdown and servicing
- Boiler upgrade



KA PLUMBING & HEATING

Office: 01223 890554
Mobile: 07890 576608
kaplumbingheating@hotmail.co.uk



Linton's new Estate Agency.

Get in touch for a free valuation

sam@abodetc.co.uk
01763 259 888

0.75%
Selling
fee!

TIM PHILLIPS & Co. Accountants

Established 1991

Independent, specialist service for:
**Small Business • Self Assessment
Personal Taxation**

Free initial consultation – no obligation
EASY, FREE PARKING

Copley Hill Business Park, Cambridge Rd., Babraham
Off A1307 between Wandlebury and Babraham
Tel: 01223 830044. www.tpaccounts.co.uk

Pest Right Pest Control

ants
bedbugs
bees
carpet beetle
cluster flies
cockroach
earwigs

fleas
flies
foxes
mice
moths
pigeons

rabbits
rats
silverfish
spiders
squirrels
wasps

Based in Linton, call Mark or Carolyn on
01223 897982 or 0845 4682412 or 0777 620 4483 for
a discreet professional insured service

RESIDENTIAL • COMMERCIAL • AGRICULTURAL • INDUSTRIAL

THE DOG & DUCK
63 HIGH STREET, LINTON
TEL: 01223 890349
WHATSAPP: 07932993433
THE OUTDOOR PUB

THE PUB IS OPEN FOR FOOD & DRINK IN OUR OUTDOOR HEATED MARQUEE & BEACH HUTS.
BOOK NOW FOR SUNDAY LUNCH, WITH LIVE JAZZ ON THE FIRST SUNDAY OF EVERY MONTH.

THE SHED SHOP IS STILL OPEN, OFFERING DAY TO DAY ESSENTIALS.
POP IN OR ORDER ON OUR ONLINE STORE FOR COLLECTION OR DELIVERY.
WWW.DOGDUCKSHOP.COM

CHECK OUT OUR WEBSITE FOR NEWS, UPDATES & MENUS.
WWW.DOGANDDUCK-LINTON.CO.UK



Linton Complementary Health Centre

2B Bartlow Road, Linton, CB21 4LY

- Acupuncture
- Shiatsu
- Massage
- Food Intolerance Testing

Telephone: 01223 891145
Email: enquiries@lintonhealth.co.uk

Library to re-open for browsing

THANK you to the many customers who have been making good use of the library even with our restricted services. It's always great to see you – thanks for remembering to wear a mask. If all goes to plan, Cambridgeshire Libraries will open for browsing from the week of 2nd November, within current limited hours. If you prefer, you can still go online to reserve books and/or ask us to choose books for you through Select & Collect, or call customer services for assistance. Full details of library services, including lots of additional online provision, can be found on our website (see below) or just come in and ask. Please note that in order to meet our costs, libraries will soon need to reintroduce some of the regular charges that have been suspended since March. We will try to give you notice of this happening. Thank you for your understanding. We hope to see you soon at the library.

Current Linton Library opening hours: Tuesday 10am-2pm;
Thursday 2-6pm Customer Services (regular office hours):
0345 0455225

Bus Pass application & renewal: 0345 0451367

Blue Badge application & renewal: 0345 0455204 Libraries
website: www.cambridgeshire.gov.uk/library

Anna McMahon & Lindsay Healy
Community Library Assistants. Linton Library
anna.mcmahon@cambridgeshire.gov.uk

Cambridge VIPS

The Cambridgeshire charity for people of all ages with low vision and blindness.

LIKE so many other organisations, our monthly meetings in Linton are still sadly unable to take place. We very much miss seeing our members, and they assure us they are missing the friendliness and fun at our get togethers where they could catch up with friends each month. We are, however, keeping in regular contact mostly by telephone, for a chat and to check they have shopping, medication and any other help they may need. The Cambridge office team can be contacted either through the number below, or by ringing direct on 420033, which will relay your call to members of the team, some of whom are still working from home. Help or advice is available, as well as information on aids and resources, which may be especially needed in the current situation.

If you are aware of anyone with low vision or blindness who you think may benefit from our services, but who has not previously been registered with Camsight, please contact us as we will get in touch and offer any help possible.

We look forward to keeping in contact with our members and send our very best wishes to them all - that they keep in good health and good spirits until we can meet again.

Jean Mannion
893595

We hope you like jammin' too

IN October, we donated £460 to East Anglia's Children's Hospices (EACH) making a total of £891 raised so far this year. Thanks to generous gifts of fruit - redcurrants, rhubarb, damsons and jostaberries, to name a few - we've had a wide variety of preserves available on the stall. Thank you so much to all our supporters who make this charity donation possible.

Jill Heale
Hildersham Jam Stall
893596,
edheale@btinternet.com

A Turkish Shirley Valentine

OUR speaker Jenny Gibbs gave her talk via zoom. In 1993 her work colleagues bought her a ticket for a mystery cruise (she had to pay). The cruise ship she imagined turned out to be a little sailing yacht and, as she has a phobia of water, she stayed in her cabin the whole trip. Looking out of her porthole at the end, she was captivated by a beautiful sandy bay and turquoise sea, fell in love with Turkey, and decided to live there. She caught a dolmus (minibus) which was bedlam – she had a goat's head on her lap the whole way. The dolmus pulled up at a sandy beach where the only little building was a restaurant. Nobody spoke a word of English and they thought she was asking for a job. She worked for nothing there cutting up things (including octopus) seven days a week from 7am to 12pm. After a time, the restaurant closed for a holiday, and the workers returned to their own towns and villages out of respect for their elders and, as her guest house had also closed down, the restaurant owner asked her to come home with him. The dolmus climbed up and up into the mountains to a little village called Narhiarz Milas. One of the ladies, who all dressed in stunning traditional costume and headscarves, told her she was the first foreigner ever to come to the village. She met and fell in love with a man called Mustafa and they decided to buy an ancient farmhouse together and restore it. They now divide their time between Turkey in the winter, picking olives, and East Anglia in the summer where they give talks (over 1,000 to date). A neighbour gave Jenny some seeds to keep inside her bodice to germinate, and these turned out to be silk worms, so they made silk.

Our next meeting on 3rd November at 7.30pm will also be via zoom – the speaker will be Andy Malcolm, his talk entitled *Fishy Tales*.

Sally Proberts (891021)

Linton Gardening Club diary

Linton Gardening Club Diary AS mentioned last month, the Garden Club will not be holding its November or December meetings. The committee continues to monitor the situation, but with things so unpredictable at the moment it is hard to say when we will be able to restart. We do miss seeing everybody and hope you are all safe and well.

When lockdown began in March, we were just starting on this year's gardening jobs; and now autumn is already here and the main growing season is coming to a close. On the vegetable plot, pentland javelin first early potatoes, courgettes, peas and dwarf French beans grew well despite the hot dry spring. Later plantings including leeks and swedes are continuing to crop and we are growing broccoli and brussels sprouts for

the first time. Our attempts at growing different varieties of tomatoes outdoors went well, but we needed stronger stakes to cope with the lush growth and unexpected September gales. With the first frosts due, tender plants will be brought under cover soon. After final flowering, dahlia tubers will be dug up and stored in the shed until springtime to allow for easier planting of spring bulbs and winter bedding in the borders. Like many other people, we have found working in the garden and with nature has taken on a special significance this year and helped us through these strange times. Keep safe and well. Enjoy your garden.

Jim and Helen,
Linton Garden Club,
lgsecretary@yahoo.co.uk,
tel. 893577

THE LINTON NEWS Next Publication 7th December 2020
DEADLINES for ADVERTS Monday 16th November
NEWS ITEMS Wednesday 18th November

ITEMS FOR ADVERTISING MANAGER

Requests for adverts can be sent to:

Judith Rouse Email: adverts.linton.news@gmail.com

ITEMS FOR THE EDITOR

Should be sent to Jack Glossop

Email: editor.linton.news@gmail.com

FOR DISTRIBUTION QUERIES CONTACT:

Delivery managers: Jenny and Chris Murison, 660408, or
07905 384741 Email: delivery.linton.news@gmail.com

Call 893619 for an audio version of the Linton News.

Bin collection dates

Linton refuse collection: Mondays 9th and 23rd November
Linton blue and green bin collections: Mondays 2nd, 16th and 30th November (Only every other green bin collection guaranteed)

Household recycling centres

All visits to the centres must be pre-booked and only essential visits are allowed. An essential visit is where waste / recycling could not be stored on your property without causing a risk of injury, health or harm to members of your household or harm to public health and amenity.

Full details at www.cambridgeshire.gov.uk/news/re-opening-of-household-recycling-centres

Bulky item collection

PLEASE check that the items you would like to be collected are acceptable to us. If you are unsure call one of our advisors on 03450 450063 and ask if it is acceptable and if so can you book a bulky collection. There is a fee for bulky item collection. Full details are at <https://www.scams.gov.uk/bins/bulky-item-collection-service/>

Granta School look forward to celebrating Black History Month

IT has been an exciting first month back at Granta School. We have enjoyed welcoming the return of all our students, who have settled exceptionally well into their new classes and the amended routines that are in place to keep them safe amidst the current climate. Our personalised recovery curriculum has helped all pupils engage with learning, whilst focusing on their wellbeing and working through the experiences of lockdown. Throughout October, the school will be celebrating Black History Month. This will culminate in a poster competition open to the whole school set to take place at the end of the month. Students will be learning about Black History Heroes, inventions, Caribbean and African artwork and jewellery, reggae music, the origins of Notting Hill Carnival,

and Windrush.

Our 6th form students have enjoyed their DofE expeditions out into the local community and have developed some excellent map reading, tramping cooking and teamwork skills. We look forward to a time when more of our students can access the local community services again to practise their independent living skills. We continue to welcome back the community groups that use our facilities, including swimming, zumba and jazzercise, and hope that these activities continue to be a source of comfort and fun for locals during these uncertain times.

Ruchi Datta
Headteacher
Granta School
896890

MALLYON & DONALDSON Linton

Specialising in both Modern and
Traditional building methods.

Tel: 01223 891267
Mob: 07941 220868

All contracts finished to a high standard.
Reliable service. Local references available.



Cambridgeshire Family Chiropractic Centre

Bespoke massage and chiropractic care
for aches and pains
Specific techniques for pregnancy and children
15 years' experience
Call 07870568548

www.cambridgefamilychiro.co.uk



afibfitness

PERSONAL
FITNESS TRAINING

Specialist in medical
EXERCISE REFERRAL

Anton Flynn
07837 065946
afibfitness.co.uk



YOU BEAUTY CAMBRIDGE

YOUR LOCAL
BEAUTY SALON

Check us out at
5 Balsham Road, Linton
Cambridge CB21 4LD

youbeautycambridge.co.uk
01223 668400

LINTON VILLAGE MOTORS

(situated in Great Abington opposite Granta Park)
www.lintonvillagemotors.co.uk

Tel: 01223 830550

- MOT testing
- All makes of vehicles serviced and repaired
- Tyres at competitive prices
- courtesy car provided
- Polite and friendly staff



Mon-Fri: 8.30am-5.30pm Sat: 8.30am-12.30pm



McKenzie & Haywards Garage LTD

MOT by appointment while you wait
Servicing, Collection & Delivery Service

Unit 3 & 4, Lintech Court
The Grip Industrial Estate
Linton, Cambs
CB21 4XN

Tel : 01223 894140
Fax : 01223 890035
mhgarage@btconnect.com

PJB Maintenance

No job too small
Ground work, Patios, Floor
& Wall Tiling, Fencing, Roof
repairs, Demolition
CPSC Licence
Free Estimates

Call Peter Belsom on
Mob: 07799 183308
Tel: 01223 668475

MOPS HAIR SALON

HAIR BY JO DENNY
WOMEN / MEN / CHILDREN
CUTTING & COLOURING

41 LINTON HIGH STREET
(BEHIND BOSWELL'S BAKERY)
t: 01223 893 285

Nourish – Linton

AT this moment more than ever, we are all trying our best to stay healthy; and for good organic food, fruit and vegetables there is no better place to shop than Nourish – Linton (formerly Farm Shop at the Old Granary).



Jenny and Rob Colgan with a very full veg box

Jenny and Rob Colgan met 19 years ago when Jenny came to Cambridge from her native Sweden to study English. She became lost on her first day, went into a pub to ask directions and met Rob. It was love at first sight. She had had an interior design shop in Sweden but became a stay at home mum for several years to her two children, now aged 14 and 17. After a serious illness she decided to take a course in nutrition, concentrating on healthier foods which were subject to fewer pesticides. She started making Swedish crackerbreads at home to sell in markets but also at the Linton farm shop. One day the previous owner said that she was looking for someone to take over the shop, and that was it.

Jenny wants to offer foods which are unavailable in the supermarket: mostly from small local producers and suppliers such as Cambridge Food Hub, Audley End and Totally Cultured Ferments. They sell over 100 veg boxes a week, and with the box will also deliver bread from Jigsaw, wine from Case Solved and flowers for the village florist. Rob is now concentrating on this part of the business full time as they are so busy. Future plans include selling loose products such as dry whole foods, rice and pasta so that customers can bring their own container to fill or use a recyclable alternative. Come along and see all the amazing produce, and start your healthier diet here.

The shop is currently open Tuesday – Friday 10am – 5pm, and Saturday 10.30am – 2pm, you can contact them as below.

boxes@nourishlinton.com

hello@nourishlinton.com

Telephone – 07543 392764

Article and photo – Sarah Hurcum

A dog called Panda

MANY residents, especially around the Flaxfields area of Linton, will know about Panda the Greyhound being walked each day from Nichols Court. Unfortunately Vic and Beryl Terry, residents at Nichols Court, have the heartbreaking job of notifying everyone that Panda had to be put to sleep on 9th October 2020 to stop further suffering, due to developing a tumour and abscess in her mouth and throat, causing great loss of weight and poor quality of life. Panda had been with us since 2013, aged two, when she stopped racing having won three races and been placed seven times before refusing to leave the trap one day. After an appeal for a home in the classified section of the Cambridge Evening News she became a Terry. The last few months have been very awkward and had it not been for four Linton ladies who came to the rescue when Vic had a fall, and through ill health was unable to walk Panda daily, who knows what would have happened.

A recommendation by the daughter of one of the Nichols Court residents to contact The Cinnamon Trust for help, resulted in Diane, Hannah and Roslyn from Linton plus Catherine from Hildersham volunteering as walkers on a rota system. They were all fantastic and the love between each of them and Panda was absolutely out of this world, illustrated by the way Panda dashed up and down the corridor when it was time to go “walkies”. Vic and Beryl can never show their gratitude enough, but the ladies have said they would love to scatter some of Panda’s ashes where each of them walked her, the water tower, rec and river and Gog Magog and Wandlebury. She will be remembered!

It would be a lovely tribute to our beautiful companion Panda, if a few more Linton people could contact: The Cinnamon Trust 10, Market Square, Hayle Cornwall, TR27 4HE. Email admin@cinnamontrust.org.uk, or www.cinnamon.org.uk to offer some form of help for those needing help as we did. Thank you.

Vic & Beryl Terry
Nichols Court, Flaxfields, Linton
Picture: Diane Fraser

Below: Much missed Greyhound, Panda, well known around the village



New spaces at the Infant School

IT'S hard to believe October half term has been and gone and we are well into the swing of the autumn term. Routines are embedded, albeit very different routines to normal, but all of the school community are working hard together. The building was a hive of activity over the summer break and we now have some fantastic new spaces in our school. The staffroom hadn't been touched since 2007 with the kitchen units having been in place since 1988. The PTFA agreed that the staff need a welcoming, calming place to eat and relax and fully funded the refurbishment. Handy Heroes were very generous with their time and expertise, Howdens very kindly donated the kitchen cupboards for free and Castle Side Electric donated their time for free. A huge THANK YOU to them all. Please do support these local businesses. Castle Side Electric; 07795 595856. Howdens Saffron Walden; 01799 642000. Heroes Maintenance; 07930144592.

Our PTFA have also funded refurbishment of an outside space to be an Intervention area, predominantly for Mental Health provision. Again, another area the PTFA felt deserved some funding. Thank you to Castle Renovations (07507 558910) another local business for you to support) for their help and work on this. Thank you also to The Anderson Trust who have funded the furnishing of this room. An area in the hall has been transformed into a DT room for the children to use, housing the equipment the school won in the Belling competition, and a new sandpit and mud Kitchen are currently under construction. The children can't wait to start role playing in these exciting outdoor learning areas.

We are already thinking about the intake for September 2021 as the admissions window is open. It is difficult to have any visitors in school at the moment, but we are hoping to organise small group tours out of school hours, and will have a virtual tour of the school with information for new parents. Keep an eye out for information on our website, our school noticeboard and the next issue of Linton News.

Emma Hicks

Urgent: shoe box appeal

LAST year the generous people of Linton filled shoeboxes with gifts for children and elderly people living in poverty in Romania. Would you be able to help Children in Distress, a Yorkshire-based charity, send boxes to bring these families some Christmas joy again? There is concern that shoeboxes may be more difficult to obtain this year, so you could use a draw string cloth bag instead of use a luggage label to itemise what is inside. I have a supply of the Love in a Box leaflets with all the details. The filled boxes will be collected at St Mary's Church from 3pm on a date (to be announced) in early November.

Please contact sarah.thorne@lintonstmarys.org.uk for more information or to ask for a leaflet.

Thank you, Sarah Thorne
(Children and Families Minister, St Mary's Church)

A & R PLASTERING
All aspects of plastering undertaken:
Plasterboarding
Rendering
No job too small
30+ years experience
Free estimates
Tel: 01223890228
Mobile: 0774 8627920

BED & BREAKFAST
Mrs Monica Clarkson
4 Harefield Rise, Linton
Tel: 01223 892988
Quiet modern bungalow
Families welcome
No Smoking

DESIGNER DRAPES
Local Curtain & Blind Specialist
01223 890556

Allstar Cleaning Ltd
www.allstarcleaning.me.uk
Your Local, Professional, Carpet Cleaner Dean
11 years experience
Package to suit every level: Basic, Pet Treatment or Carpet Protector
£15 off for repeat customers
Free stain spotter for all customers
Contact Dean on 01223 654652
or info@allstarcleaning.me.uk to make an appointment.
Allstar Cleaning, 10 Coles Lane, Linton, CB21 4JS
14 Hillway, Linton, CB21 4JE.

MOBILE CHIROPRACTIC SERVICE
GCC-Registered Chiropractor
ALEXANDER M SMITH
01223 967565
SOUTH CAMBS AREA
(Based in Linton)
Effective care in the comfort of your home
- Low back pain & sciatica
- Neck pain & headaches
- Muscle spasm/tension
- Shoulder & Knee pain
- Postural problems
www.alexandersmithchiropractor.co.uk

GARDENER
N.C.H. QUALIFIED
All garden maintenance including:
Weeding - Mowing
Hedge cutting - Turfing
Garden clearance
Shed / fence treatment
Hard/soft landscaping
For a friendly professional service please call:
Darryl Tilling
01223 892133
07932 021277

Ask Edward
Garden & Home
Routine Garden & Home Maintenance
Gardens cleared, restored & enhanced.
Year round garden programmes available.
'No job too small'
For a free estimate & friendly service, Linton based, call 07768701010 or Email: edwards@edwardsgarden1984@gmail.com

Westlakes
Painting & Decorating
Les Westlake (exterior only)
Mobile: 07929 501101
Tel: 01223 892866
Clive Westlake 07900 492127
Adam Westlake 07917 890752

Barn Owl Accommodation
Private self-contained annexes all in Linton
www.barnowlaccommodation.co.uk
Call Suzanne on 07767 941188

STEVE WEBB
Painter & Decorator
Now upcycled furniture painted to your requirements
Excellent present ideas
Call for viewing details
Tel: 01223 893864

PSH Electrical Services
Rewires, New builds, Extra lights, Extra sockets, Repair works, Garden lighting, Showers
Registered NIC EIC domestic installer
email pshelectrical27@gmail.com
telephone 07867980738

CHRISTOPHER MARKHAM
HOME & GARDEN SERVICES
Interior/Exterior Decorating
Fencing, Guttering
Turfing, Garden Clearance
Lawn & Hedge Cutting
Decking & Patio Cleaning
Patios & Driveways
Call on (01223) 892889 or 07973 294946
No job too small...



COUNTRY MATTERS

Text by Oriel O'Loughlin and illustrated by Maureen Williams

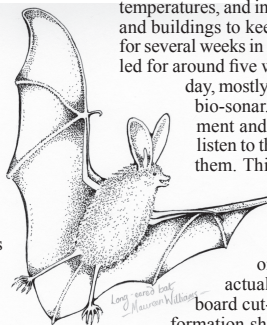


Bats in the Belfry

BEING the first on Plumb's Dairy delivery round means we get milk at unearthly hours, suitable for insomniacs. On opening the back door the other night, a bat flew in, and just disappeared. I had a feeling it would reappear somewhere, and sure enough, not in the belfry but between the window and a secondary glazing panel, sadly dead, some days later. We had a very close inspection and, with assistance, identified it as a long-eared grey bat, *Plecotus Austriacus*, not the most common, and really interesting to examine. My enthusiasm was not shared by a visitor who looked on in horror. I have to agree they are an acquired taste. To some people they are worse than the worst rodents, causing immediate terror. To others they are delightful little furry friends.

The UK has 18 species of bat, the largest noctule weighing the same as four £1 coins, and the smallest, the pipistrelle, the weight of a 2p piece. This tiny critter can eat 500 insects in a single hour. They can live for 20 years, and are often found in villages with an abundance of old buildings and trees. A former vicar at Castle Camps said if only he could baptise the bats, they would be sure never to come to church again.

Bats represent an astonishing quarter of all native mammals in the UK. They don't build nests, but live in crevices, loose bark, woodpecker holes, barge boards and dense ivy. They only need a hole the size of an adult thumb nail, and natural decay in trees provides excellent roosting cavities. They are protected by the Wildlife and Countryside Act of 1981 and the Conservation of



Habitat and Species of 2017, and are hence the scourge of people trying to renovate buildings.

Bats have different roosts for different times of the year. In summer their tree roosts are high to have the young in warmer temperatures, and in winter they roost lower and deeper into trees and buildings to keep warm. Females gather in maternity roosts for several weeks in summer, and rear one baby each, who is suckled for around five weeks. They hunt by night and sometimes by day, mostly for moths, using echolocation, also known as bio-sonar. Echolocating animals call out to the environment and, for the purpose of hunting and navigation, listen to the echoes returning from various objects near them. This fact was first discovered in 1938, when a scientist confirmed they used frequencies way above human hearing.

If you're short of ideas for Christmas presents you can buy a bat detector, a trip on the Cambridge Bat punt safari or you can actually adopt a bat. For £20 you can get a cardboard cut-out toy of the Greater Horseshoe bat, an information sheet and an adoption certificate. Beats Toilet Twinning.

Following the article in the September edition about crayfish, there is an important supplementary. The colony of native crayfish that we have in the Granta is rare and protected. You are only allowed to trap them for scientific purposes. If however you wish to trap American crayfish, you need a licence and permission from the landlord.

Linton Community Help Team still here for you

BEHIND the scenes we are busy building partnerships, helping with food support and a meal delivery scheme. You may have seen media coverage on food poverty. Rest assured we have been working with St Mary's Church, the Infant and Junior schools to help families in the holidays. This October half term, free school meal families have been offered vouchers to help cover extra food costs. We plan to offer support again at Christmas and to set up a school holiday lunch club in 2021. If you or your business would be interested in making a donation or offering help with these efforts, please contact us. Loneliness can also be a challenge, so thank you to the children who put pen to paper to connect with the older generation through letters and poems. We reached out to over 50 local people via Symonds House, Age UK, Nichols Court and St Mary's Church. We realise that with winter on our doorstep and uncertainty around Covid 19, we may feel more anxious and dreading the short days. Help is only a phone call away, locally and via agencies such as Care Network. Some may face economic hardship and be worried about Christmas. Whatever your situation, this pandemic affects us all. Our sense of community is key. Let's keep Linton a safe and welcoming place. The best advice to avoid infection remains to wash your hands regularly, wear a face mask in indoor public spaces and stay two metres apart from others. Our wellbeing is vital too, so we will be sharing ideas to fill our days and brighten up our windows. Keep checking in with your neighbours and please reach out to us if you need help. We can support practically and financially. We can also direct you to useful information and other services and we respect everyone's privacy. You can speak to the Health Centre or your school office or email lintoncommunityhelp@gmail.com or phone 01223 901132.

Yannick @ LCHT

Linton Air Cadets prepare for return to face to face activities

AT Linton we continue to have success with BTEC awards in lockdown, with Corporals Fenn, Tysoe, Keenan and Murray all submitting their Level 2 awards in Teamwork and Personal Development. We look forward to receiving the results for these soon.

Virtual parade nights continue to be a success with Cadets often running sessions themselves; recently we have had interest lectures from Cadet Morris about aero-modelling and Cadet Vellacott on professional flight simulators. We continue to meet weekly for virtual training. Planning for our return to face to face activity is item one on our agenda. Our absolute priority is to meet our own internal policy criteria, as well as guidance from the National Youth Agency, so that we can ensure a safe return to activities. I'm pleased to say considerable progress is being made and we hope to

have announcements regarding our return to face to face in the coming weeks.

A full training programme has been put together for our return. Over virtual parade nights we have covered all sorts of theory, including leadership, fieldcraft, first aid and radio training. I look forward to seeing cadets able to complete all the practical aspects of our comprehensive syllabus soon.

Usually at this time of year we would be focusing on drill and uniform, to be on top form for parading the squadron and our banners at both Castle Camps and Linton memorial parades. However, things will look considerably different this year due to the circumstances. Linton Squadron will support the local community in every way possible within our guidelines.

Bradley Wright, Acting Pilot Officer Training
2523@rafac.mod.gov.uk,
07943 873272

POT POURRI 185

How many people attended?

THE LVH was packed for a planning meeting. It was said there were 100 people. However, the count of people leaving the hall could only be 100 if I included myself to the original number attending, the same number attending, plus half of those attending and a quarter of those attending. How many were actually in the hall before I came?

Pot Pourri 184 - What is my PIN?

The prime factor is 7. Hence the PIN is 7343. (7 cubed equals 343)

Go out and discover your local history



Ashdon Village Museum

Picture by The Hundred Parishes

SINCE March, getting out in the countryside has been greatly encouraged. Successive generations have shaped this fertile land. They have planted hedges and cut wood from ancient, coppiced woodlands, tended animals, planted orchards and harvested honey from bees. Profiting from this productive land, many constructed beautiful buildings that reflected pride in their locality. Today, a significant number of these are listed buildings. Our rich architectural tapestry is brilliantly recorded in *The Hundred Parishes: An Introduction*. There are a few copies still available by mail order from the Society's website www.hundredparishes.org.uk or from local bookshops and Tourist Information Centres.

Museum collections of assorted artefacts and documents add another dimension to the human history of the area. Saffron Walden Museum opened in 1835 and houses a real treasure trove of historical and other material relating to the local area. A recent grant from the National Lottery Heritage Fund is enabling the development of plans to attract new visitors to the museum and adjacent castle. Smaller museums hold collections of agricultural implements, local artefacts and archive material. The Grade II* building of the Forge Museum in Much Hadham houses a collection of metal tools, while striking medieval wall paintings reveal details of Tudor fashion. The Ashdon Village Museum has exhibits about life in the 20th century, and the curator is updating information on the family trees of seventy local residents and preparing displays in anticipation of reopening in the future.

We look forward to the time when our museums can safely reopen. Meanwhile, we can enjoy our heritage and celebrate the past by continuing to explore outdoors. With regular additions of new walks to the Society's website, we can use these descriptive routes, some as short as one mile, to explore the cultural landscapes that make up the Hundred Parishes.

Tricia Moxey, Trustee
www.hundredparishes.org.uk

A J Pest Control Ltd

Local Professional Service
Member of NPTA
Domestic/Commercial/Agricultural
Experts in all areas of pest control



Mice, Rats, Wasps, Bees, Hornets, Moles, Moths, Ants,
Bed Bugs, Fleas, Flies, Squirrels, Birds, Woodworm.

Tel: 01799 542 505 Mobile: 07855478824

E-mail: info@ajpestcontrol.com www.ajpestcontrol.co.ukCOOPER BARNES
AUTOMOTIVE

£50
CASH BACK CAR
BODY REPAIR.

Insurance claims, bring your vehicle to a place convenient to you, not to your insurance company.

Call us for details and we will guide you through the simple process.

Service delivery to BS 10125 standard, independently evaluated by a competent third party certification body.

Approved repairers for major insurance and fleet management companies.

Cooper Barnes Ltd
2 The Grip Ind. Est
Linton, CB21 4JN
T: 01223 880603 E: repairs@cooperbarnes.co.uk W: www.cooperbarnes.co.uk

T&C's APPLY

LINTON PAVING
COMPANY

YOUR LOCAL LANDSCAPING
BLOCK PAVING & PATIO
SPECIALIST.
PROPERTY MAINTENANCE
Int/Ext Painting, General Repairs
FRIENDLY SERVICE.
FREE QUOTATIONS
Tel: Andre Jacobs

Mob: 07765 594398
Office: 01440 702498



Neil Claxton

Painting & Decorating
Interior/Exterior
Rooms Emulsioned
from £120
FREE ESTIMATES

Tel: 01223 893487

Mobile: 07724073045

E-mail: n.claxton925@btinternet.com

ProClean

'Your Complete Cleaning Solution'

*Carpet Cleaning *Rugs *Stain Removal
*Car Valeting *Caravans *Motor Homes
*Upholstery Cleaning *Stain Protection
*Floor Cleaning / Scrubbing / Sealing / Polishing
*Pressure Washing of Patios Paths & Driveways
*Domestic Cleaning * Top Ups & One Off Cleaning
*Gutter / Fascia Cleaning

*Contract Office Cleaning (Flexible Options)

TEL: 890433 Mob: 0777 375 8355
74 Bartlow Rd, Linton, Cambridge, CB21 4LY

The Crown Inn

EAT OUT to HELP OUT
Monday – Wednesday in November

Serving all our usual Meal Deals on these 3 days.
Restaurant open with Covid safe restrictions.

We look forward to welcoming you, with the return of our Winter Menu. Support your local.
Open every day 01223 891759 crownatlinton.co.uk

De-Salis Wealth Management

Associate Partner Practice of St. James's Place Wealth Management

SPECIALIST ADVICE ON

Personal Financial Planning – Pension Planning
Investment Planning – Protection Planning

Ian Cross DipPFS

01223 892821

E-mail: ian.cross@sjpp.co.uk Website: www.de-saliswealth.co.uk

De-Salis House, 6 Hillway, Linton, Cambridge, CB21 4JE

The Partner Practice is an Appointed Representative of and represents only St. James's Place Wealth Management plc (which is authorised and regulated by the Financial Conduct Authority) for the purpose of advising solely on the group's wealth management products and services, more details of which are set out on the group's website www.sjp.co.uk/products. The 'St. James's Place Partnership' and the titles 'Partner' and 'Partner Practice' are marketing terms used to describe St. James's Place representatives.

Local mobility shop opens

A COUPLE who found themselves unable to work because of the Covid-19 pandemic have set about turning a negative situation into a positive one by opening a shop specialising in mobility products. Originally from Linton and Shudy Camps respectively, Scott Brooker and Hayley Swadling now live in Haverhill with their one-year-old daughter. Both attending Linton Village College in their former years, the couple have opened Three Counties Mobility on Bartlow Road, Castle Camps. They offer a range of scooters, wheelchairs, rise and recliner chairs and daily living aids, and pride themselves on being able to source anything that is not already in stock. Further, Three Counties Mobility services scooters, and can collect or deliver them.

Scott, 26, has a background in sales, most recently in the mobility products industry, and it is an area of retail that he



Above: The new shop has a wide range of excellent products at affordable prices

recognises is always going to carry a demand. Hayley, 28, worked for 10 years in the hospitality industry, most recently as restaurant manager at the Three Hills in Bartlow. She said: "We don't just want to be a shop. We want to be a hub." The couple want to offer a safe solution to those who need to source mobility products during the current pandemic, by offering appointments for customers to view the product range, and advice tailored to customer needs. Hayley and Scott are sourcing their products as much as they can from local or British suppliers and are keen on ensuring environmental friendliness of the products sold is a priority.

Scott & Emma
Three Counties Mobility
www.threecountiesmobility.co.uk
(756440)

Can you help the Scouts?

AS the end of September, Beavers and Scouts had begun to meet outdoors, with Cubs meeting for a hike from Chifford Hall to Balsham in early October, as all the 1st Linton Scout groups re-started their Autumn meetings. Thankfully government restrictions have lifted to the extent that such meetings may well be able to continue unabated (fingers crossed). We are certainly all praying for this. Many thanks from the committee to parents/carers of the children for getting them back, keeping to the new rules, and for being so enthusiastic. Many thanks also to Barry, who many of you will know has been running Scouting in Linton since the last century! He has really helped to get everyone back, having fun and feeling positive, which is no mean feat in the current circumstances. If you would like to help with Scouts, we are looking for parents and other adults to volunteer: it does not have to be a formal position, but will certainly be highly welcomed. Contact me on 01223 660493 or edgroenhart@htomail.com

Ed Groenhart
Chair, 1st Linton Scouts

New exhibition at Gallery Above



THE Gallery Above has doubled in size and is now hosting its first exhibition in the strange new world of Covid. *Children, Birds, and Books*, an exhibition by Jim Anderson, will open on Friday 30th October.

Linton artist Jim Anderson was recently the winner in an episode of the BBC1 programme *'Home Is Where The Art Is'*. He works in various different media – including mosaic, paint, and print – and presents a satirical and energetic view of the world. Though sometimes touching on serious themes, his work is vivacious, colourful, and tinged with a punkish irreverence. The Gallery Above will be showing some new six-foot high paintings recently completed and not yet shown elsewhere. So, as the year grows colder and our horizons are increasingly shrunk by the wrecking ball of coronavirus, climb the staircase to the Gallery Above for an uplifting banquet of image and colour. A percentage of the proceeds of any artworks sold will be donated to Act4Addenbrookes, a medical charity based at Addenbrookes hospital. In accordance with the current guidelines, there will be no private view for this exhibition and visitors are asked to adhere to social distancing and face-covering rules.

Gallery Above, 94, High Street, Linton, CB21 4JT. Opening hours: 10.30am – 6pm Wednesday to Friday, 10.30am – 2pm Saturday, or by appointment. Phone 894899. Email: rosiewellings@aol.com

Rosie Wellings

Holly needs a haircut

OUR lovely holly tree, known to some children as the lollipop tree (pictured left), halfway along Back Road, is scratching the top of our heads. We've lazily put off raising the canopy, and now it's so close to Christmas we thought we'd wait until the lower branches could be used in Christmas wreaths or Advent decorations, especially as there's a fine display of berries this year. So, if the weather is fine, or at least not raining or icy, we plan to prune our tree on Saturday 28th November, the day before Advent, in the afternoon. So, come along and collect lovely branches (any donations will go to St Mary's).

If the conditions are bad, we will postpone until the next day, or the next weekend.

Jackie Hall

PLANNING APPLICATIONS

T1 Yew Remove low branch over garage to first fork T2-T6 Lime Re-pollard Open for comment icon
20 High Street Linton CB21 4HS
Ref. No: 20/2053/TTCA | Validated: Tue 29 Sep 2020 | Status: Decided

Re-Pollarding to previous pruning point of No7 lime trees in front garden. (amended)
16 High Street Linton CB21 4HS
Ref. No: 20/2022/TTCA | Validated: Thu 24 Sep 2020 | Status: Decided

Certificate of lawfulness for alterations including insulation and plumbing works.
8 Horn Lane Linton CB21 4HT
Ref. No: 20/04110/CLLB | Validated: Mon 05 Oct 2020 | Status: Awaiting decision

Kitchen works associated with replacing cooker, renovation of inglenook fireplace, fit secondary glazing, and fit gas boiler.
8 Horn Lane Linton CB21 4HT
Ref. No: 20/04069/LBC | Validated: Fri 02 Oct 2020 | Status: Awaiting decision

Repairs to thatch roof and re-riding.
8 Horn Lane Linton CB21 4HT
Ref. No: 20/04068/LBC | Validated: Fri 02 Oct 2020 | Status: Awaiting decision

Single storey rear extension, installation of Dormer window and rooflight Open for comment icon
20 Lonsdale Linton CB21 4LT
Ref. No: 20/04046/HFUL | Validated: Tue 13 Oct 2020 | Status: Awaiting decision



The 'lollipop tree'

Bentens

Accountants and Tax Advisors

Abbey House, 51 High Street
Saffron Walden

01799 523053 www.bentens.co.uk

The Darryl Nantais Gallery

Fine Art, Framing & Restoration



Brian Seymour



Darryl Nantais



Magdalena Marey

We offer a wide selection of artwork, contemporary & traditional, local & international, including paintings, prints, ceramics, glassware, sculptures & jewellery. The Gallery also offers bespoke framing, picture restoration and cleaning.

Proprietor: Karl Goodhead

59 High Street, Linton, Cambridgeshire CB21 4HS

01223 891289 - www.linton59.co.uk

Find, follow & like us on Facebook, & Instagram for regular news updates

Tuesday to Saturday 10am to 4pm

Children, Birds, and Books

An exhibition of prints, paintings, and mosaic by

Jim Anderson

Recent winner in BBC1's *Home Is Where The Art Is*

Gallery Above

94 High Street, Linton, Cambs. CB21 4JT 01223 894 899

Opening Hours: 10.30am until 6pm

Wednesdays to Fridays

Saturdays 10.30am until 2.00pm

BRICK MARKETING
Injecting power into your marketing

brick-marketing.co.uk
hello@brick-marketing.co.uk

Cambridge Art Makers

A friendly and inspiring workshop and studio. Expert tutors offering a diverse array of dynamic, engaging creative courses.



Make time for Making!
Claim your creativity it's good for you!

6 Lintech Court, Linton
www.cambridgemakers.org

sqcarsales.co.uk

for service & quality

SQ Car Sales

Quality used cars

t: 01223 778 448 m: 07908 128 164

G. DYE & SONS

GENERAL BUILDERS,
GROUNDWORK & MAINTENANCE,
CONSERVATORIES & UPVC WINDOWS, KITCHEN & BATHROOM REFITS

ALSO INTERIOR & EXTERIOR DECORATING
REFERENCES AVAILABLE

For enquiries please call

Mobile:

07961 342887

Tel: 01223 892089

georgedye738@btconnect.com



Free Estimates

A Brighter Spring for the Village

A BRIGHTER Spring for the Village.

So what is the best way to spend a damp Saturday morning? Obviously planting 2,000 daffodil bulbs.

With the very valuable organisation of George Fisher, a resident of Linton, six other volunteers from Cambridge Rutherford Rotary from other parts of Cambridge gave up their Saturday morning to do just this. On behalf of the village, I would like to thank George, Colin Chrebenksi (President of the Rotary), Mike Francis, Mark Robinson, Guy Turvill, Duncan Mackay and Sandra. Two of our Parish Councillors helped out and Cllr Enid Bald should be particularly mentioned in dispatches as she personally bought snowdrops and white crocuses for the old pond area in the Cemetery as well as kneeling in exceedingly wet grass to help with the planting. Not forgetting Jenny Seaward, our stand-in Clerk, who made sure the volunteers had a hot drink before hand.

On top of the physical work of planting the bulbs (and there are a few more native daffodils and wood anemone donated by Cllr Bald to be planted in the Cemetery plus snowdrops under the village sign, when they have been delivered), the Rotary have contributed £100 towards the cost, together with a very generous donation of £50 from Cllr Brian Cox.

It may be a bit difficult to wander "lonely as a cloud" as the traffic passes the areas that have been planted, but hopefully next spring we may see "a crowd, a host, of golden daffodils.... fluttering and dancing in the breeze." (With thanks to William Wordsworth). Cllr Merrie Mannassi

Meet our new Councillor Sharron Parker

I MOVED to the village last year, attracted by its strong community spirit and friendly welcoming atmosphere. I am now retired having worked at Sawston Village College until 2015. Since then I have worked at a Language School, teaching English to foreign students. I am a keen sports fan, especially football, and was actively involved with local football teams over the past three decades.

My daughter and granddaughters live in Colchester, which is where I am originally from. Several of my ex-pupils live in the village and very much convinced me that this was the place to be. I am interested in local history, sport and community projects and looking forward to representing this wonderful village and hope to make positive contributions.

Cllr Sharron Parker

Neighbourhood Plan Survey Distributors do their Duty!

AT THE beginning of October, the Parish Council asked for help to distribute more than two thousand Neighbourhood Plan Questionnaires to every house in the village. Certainly not a job for the faint hearted! Using maps, the electoral register, and a good deal of local knowledge we set up twelve routes. Thank you to all those that helped with the distribution.

Your responses will help shape the future of Linton for the next generations. It gives us an anonymous yet detailed overview of what is needed and what is a priority to most residents. Please return your completed questionnaire by 30th October 2020.

The Neighbourhood Planning Committee welcomes public involvement. If you would like to get involved please contact the Parish Council office. Clerk

Grim Times for the Granta

ON 7TH OCTOBER we noticed that the river water was white and cloudy, from just upstream of the High Street Bridge to the Recreation Ground. A distinct line from a seepage point in the bank near to the Village Sign, indicated the source of the pollution.

After contacting Anglia Water, Cambridge Water, the Environment Agency, and speaking to the workmen, we established that this pollution followed work on water pipelines on Back Road. The work was stopped and the seepage enclosed in filter bags, so that only clean water entered the river. A broken pipe was uncovered in the concreted bank side. Dr Cox has maps and information on a damaged culvert from Back Road leading to the river.

Due to low flow, any pollution will have an increased impact on water quality and wildlife. In particular, as the chalk/mud settled, the smothering effect on the river bed will kill larvae and crustaceans that are the food for fish, especially the spawning Brown Trout. Rain at the weekend might have swept some of this away, but the river bed and water remain grey and dirty.

If you see any problems with the river, please contact

The Environmental Agency on 0800 807060.

PS we have a colony of rare native crayfish, which may only be trapped for scientific purposes, not food! Cllr Enid Bald

Beware of Cold Callers!

HAVE YOU had someone knock on your door because they are doing work in the local area? Sound familiar? So, you express an interest in what they are offering? You make an appointment and a very lovely person comes in, does some measurements, sits down and starts to chat.

Before you know it two hours have passed, and they give you a quote for the work. It sounds blooming outrageous, much more than you can afford. But there is a special offer, a marketing offer: they sit there and phone up their head office and see what they can do. Oh - what do you know - the price is reduced. But they need an answer there and then - yes or no.

How can you resist? Negotiate - you might get a bit more knocked off. But in your real mind you know it is still more than you want to pay or what is it is actually worth. You do know what things are worth, believe me. So then they add in a really attractive finance deal - buy now, pay in twelve months or some such. So you succumb! I know, I recognised the technique and still I fell for it.

Read the small print in the immediately printed out contract. There is always a cooling off period. Or be cleverer than me - tell them no and go and get an alternative quote.

People are using this particularly insidious selling technique in our village now! Usually double glazing, doors, conservatories, drive tarmac, tree felling or whatever. Be difficult! Pass the story on!

Cllr Merrie Mannassi

An Invitation to get Involved!

ARE YOU keen to be involved in the future of the village? Do you feel you could help make a difference in the community? Whether you are passionate about planning, traumatised over traffic or caring about conservation, it is all part of what we do!

The Linton Parish Council currently has four vacancies for Councillors and is keen to invite parishioners to join. Why not come along to one of our meetings to find out more about the role of the Council. If you would like further information please contact the Parish Clerk. Clerk

Planning Updates September 2020

DESPITE having only two planning meetings, we were very busy with background work, including training and planning updates.

We had a working party to respond to three Government White Papers on planning, where we had concerns including unsustainable development and lack of protection of areas such as ours. The algorithms upon which housing need numbers are calculated are outdated, based on inaccurate data and not reflecting recent lifestyle changes (Covid, Brexit, home working, etc). Similar modelling was so inaccurate over exam results and BSE/nvCJD fatalities, for example, so the basis needs re-thinking.

If there is to be "permission in principle" for major developments, a strong Neighbourhood Plan and properly formulated Local Plan are needed, preferably with Linton and surroundings designated as "Protected" and with sufficient public consultation. So, please return the questionnaires that we are delivering to each household - we need your input!

We also despaired at the quantity of development land submitted in the Local Plan "Call for Sites". These included around 3,500 houses at Bartlow, a new settlement of 7,000 homes east of Linton and some 3,000 houses around our village. A Q+A meeting on the LDP Call for Sites, produced some very incisive questions, e.g. the influence of developers on the LDP, infrastructure, housing need.

Linton Parish Council has already had preliminary talks regarding the site from Balsam Road towards the Water Tower; we hope the developers were sufficiently discouraged. Although at preliminary stages, it is distressing that such development could even be considered in our valued landscape. Not to mention lack of infrastructure, facilities, jobs, water...

Applications for house extensions continue. These, along with infill housing, are how villages grow naturally, in response to changing needs. Housing circulation is another way - more bungalows, so that downsizers can free larger houses for families, who in turn make starter homes available. We also have applications for multi-generation or lifetime-living extensions; another way to retain community cohesion.

Updates on the larger developments:

Paynes Meadow - LPC written submissions to the appeal have been submitted. Objections include the effect on the landscape, designs, connectivity, drainage, traffic and housing need.

Chalklands - 20/03186/FUL - 4-bed house next to the old Warden's house has been refused by SCDC

Horseheath Road - More Discharge of Condition (DoC) applications have come through, some associated with the allotments. Concerns remain about the drainage and boundary treatments.

Bartlow Road - We objected to several DoCs - 34 pages, and that was the edited version! - which resulted in a meeting with SCDC. We raised issues on the way amendments are submitted by developers, lack of clarity on what has been changed and that we could no longer see the comparison plans on the website. Developers are not always accurate in their reports, with many so out of date that no-one can assess their relevance. The pre-commencement work was said to be repair work to drains - we confirmed that there were no drains on the open field, supporting the officer and the reason for stopping the non-permitted work. The drainage scheme appears to be based on inaccurate data and inappropriate extrapolation. In future we will have regular meetings with officers to discuss our planning comments and our material reasons for objection.

Cllr Enid Bald

ADMIRAL ESTATES

Residential Sales and Lettings

- Local Linton Office
- Cambridge Office
- Specialists: Linton & Local Villages
- 20 Years Experience

Do You Need Help With Your Property?

Call us Now: 01223 891227

www.admiralestates/linton



Working with Terry Waite & Emma Cambridge

ClearTax & ACCOUNTING LTD

Quality, friendly accounting services and taxation advice.

Sole trader and small company specialist.

Free initial consultation

The Granary, Yews Farm Yard, Hadstock

t: 01223 894036

e: janine@cleartax.co.uk

www.cleartax.co.uk

Singing Lessons

Sarah Rosewell
BA (Hons) Music

Individual singing lessons available for all ages and abilities

Whether towards exams or purely for pleasure

- * CRB Checked
- * Based in Linton

For more information contact:

Sarah on 01223 894861

Email: sarahrosewell@hotmail.com

KJL Roofing

All roofing repairs, leadwork, renewal of pitched or flat roofs

New guttering,

repairs/unblocking

Free estimates before any work commenced

25 years + Experience

Tel: 01223 892542

Mob: 07958 618440

ATOUCH OF NAILS

GELISH MANICURES & PEDICURES PERFORMS LIKE A GEL APPLIES LIKE A POLISH

Call Michelle on

07866 017 801

supcuk@talktalk.net

HORSEHEATH

BED & BREAKFAST

Mrs Monica Clarkson

4 Harefield Rise, Linton

Tel: 01223 892988

Quiet modern bungalow

Families welcome

No Smoking

WHAT'S ON

November...

- | | |
|----------------------------|---------------------------------------|
| Friday 6 th | Food van - Guerrilla Kitchen 5 - 8pm |
| Saturday 7 th | Singer - Frankie Valli tribute 6:30pm |
| Wednesday 11 th | Quiz 6:30pm |
| Friday 13 th | Food van - Road Dogs 5 - 8pm |
| Wednesday 18 th | Bingo 7pm |
| Friday 20 th | Food van - Pull me Cheri 5 - 8pm |
| Saturday 21 st | Singer - Serena Grant 6pm |
| Wednesday 25 th | Rock n Roll Bingo 7pm |
| Friday 27 th | Food van - Chicken n Things 5 - 8pm |
| Saturday 28 th | Singer - Aaron Coates 6pm |



High Street
Linton
CB21 4JT

CapriBlinds

ALL TYPES OF BLINDS
SUPPLIED AND FITTED
FREE QUOTATIONS
FREE HOME VISIT
01223-894020

or email colin@capriblinds.co.uk

ALL BLINDS ARE MADE IN ENGLAND
- FAST LOCAL SERVICE

Visit capriblinds.co.uk

GLENWOOD BOLTS & SCREWS LTD

www.glenwoodbolts.co.uk



SUPPLIERS OF QUALITY FASTENERS, FIXINGS & SILVERLINE TOOLS

Unit 2 Lintech Court
The Grip Industrial Estate, Linton
Cambridge, CB21 4XN

Tel: 01223 892095 / 893931

Fax: 01223 894122

NRS CARPETS



HOME SELECTION
FREE MEASURING & ESTIMATING

All types of flooring available

Tel: 01223 893634

Mobile: 07885 173113

ABBREVIATED Minutes of the Linton Parish Council (LPC) meeting held on the 17th September 2020 via remote video conferencing.

Apologies for Absence: Cllr Paul Poulter and Cllr Amy Smith. No apologies received from Cllr Sharron Parker.

Councillors' Declarations of Interest: None.

Councillor Vacancies: There are currently four vacancies available for Co-opton

Chairman's Comment; No Comment.

Open Forum for Public Participation;

ATC Squadron representative explained that facilities have been unavailable at Linton Village College since the start of the COVID-19 pandemic and that a new venue was being sought. An alternative venue is required in the short term and consideration of available land to erect a suitable structure in the long term. It was suggested that the ATC consider the Linton Village Hall or the URC in Horn Lane. For a longer-term solution, it was suggested to enquire about land adjacent to Crofton Engineering, off Cambridge Road as this would be a remote location, ideal for parade activities.

Rob Mungovan's presentation to the Council regarding flood prevention is available on the Parish Council website. It was proposed that LPC employ Rob Mob Mungovan to carry out four days of technical analysis to ascertain viability of flood prevention measures. It was proposed by Cllr Merrie Mannassi that LPC set a budget of £1200 for four days work. Cllr Kate Kell seconded. **All Agreed.**

Cllr Simon Hill left and re-joined the meeting on this item. Cllr John Bald left and returned on this item.

Consideration of the minutes of the Council meeting held on the 20th August 2020. Chairman requested a change be made to the minutes of the council meeting held on the 20th August regarding the wording on Chairman's comment. The sentence regarding the GCP stating "saving the Parish money" should be amended to "saving tax-payers money". Following this change the minutes were proposed by Cllr John Bald, seconded by Cllr Brian Cox. **All Agreed**

Matters Arising/Clerk's Report

Due to changes to the guidelines on social distancing the Parish Council Office will remain closed to the general public, offering appointments where necessary. For information. **Noted.** Planning Training for the Councillors who requested it has been booked and paid for. For information. **Noted.**

Planning Matters

Consideration of the minutes from the Planning Committee meeting held on the 20th August 2020, the Extra-Ordinary Planning Committee meeting held on the 27th August. All Noted.

Bartlow Road Planning Applications.

Verbal update from the Chairman of the Planning Committee, Councillor Enid Bald. No changes but to be aware of TTR0 provisionally booked for January if Planning Permission is obtained by November 2020. Cllr John Bald left and returned on this item.

Horseheath Road Planning Applications.

Verbal update from the Chairman of the Planning Committee, Councillor Enid Bald. Mainly discharging of Conditions. **Noted** another meeting with developer would be beneficial. **Noted**

Paynes Meadow.

Verbal update from the Chairman of the Planning Committee, Councillor Enid Bald. Corrie Newell providing support on written representation regarding the appeal on Paynes Meadow. **Noted** **Consideration of the District and County Councillors Report for September 2020.** Cllr Henry Bachelor reminded that LHI submission is due by 25th September 2020. LPC are aware and ready. He also spoke on Local Authority warning of possible local lockdown in Cambridgeshire. A COVID-19 team at SCDC will be supporting all. **All noted.**

Finance

Local Government Services Pay Agreement. It was noted that the pay services agreement requires backdating to 1st April 2020.

Consideration of Funding and Memberships renewals requests.

Annual request for Open Spaces subscription renewal. Decision required. Cllr Enid Bald proposed continuing annual subscription with Open Spaces. Cllr Simon Hill seconded. **All Agreed.**

Annual request for One Hundred Parishes subscription renewal. Decision required. Cllr Brian Cox proposed continuing annual subscription for One Hundred Parishes. Seconded by Cllr Enid Bald. **All Agreed.**

Linton Infants further details for request for funding. Cllr Chris Hine proposed funding of £500.00 towards costs of outside play equipment providing these facilities are accessible to all groups using the Linton Infants venue. Cllr Kate Kell seconded. Voted 6 in favour with 2 abstentions. **Agreed.**

Churchyard Noticeboard relocation. Decision required.

Although Cllr Enid Bald had suggested that the Notice Board be moved back initially, it was discussed that to pay the invoice for works completed was not under the remit of the Parish Council. Cllr Brian Cox proposed not to pay the invoice. Cllr Chris Hine seconded. **All Agreed.**

Consideration of Quotations received;

Consideration of Quotations from Herts & Cambs for Grounds Maintenance contracts for continued service for the next three years. Decision required. Contract renewal was discussed and it was requested that maps of the contracted areas be sent to Cllr Kate Kell. Agenda item 132/20/21 a) i) was moved up the agenda. Agreement to renew the contract at the quoted amount was proposed by Cllr John bald, seconded by Cllr Lee Gardener. 7 for with 1 abstention. **Agreed.**

Consideration for quote to repair/replace Parsonage Way Bus Shelter panel. Decision required. Due to the recent damage to the Parsonage Road Bus Shelter it was decided to complete repairs as soon as possible. Cllr Lee Gardener proposed the Clerk be authorised to instruct repair work to a maximum budget of £800.00. Cllr John Bald seconded. **All Agreed.**

Traffic

Traffic Working Group Meeting. Verbal update from Cllr Kate Kell. Cllr Kate Kell proposed approval of the drafted letter to GCP. Cllr Enid Bald seconded. **All Agreed.**

Consideration of request for Residential Parking Permits for High Street Residents with no off-street parking facilities. Decision required. Cllr Enid Bald proposed a survey be carried out to ascertain parking requirements on the bus route to be sent to all residents and businesses on the route. Cllr Kate Kell seconded. **All Agreed.** A1307 Update on Transport Hub, West Bound bus lane and Greenways. Written reports and verbal update from Cllr Enid Bald. For information. **Noted.**

GCP Expansion of Babraham Road Park & Ride. Deadline 30th September 2020. **No comments to be submitted at this time.**

Trees, Biodiversity, River Care and Wildlife.

CCC Biodiversity team regarding protected verges.

The scheme is already in place.

Cllr Simon Hill left the meeting on this item.

Request for feedback on LPC current maintenance of protected verges. Council discussed feedback to be given. Invitation to participate in the trial of new cutting regime for protected road-side verges. Cllr Lee Gardner to respond.

Pocket Park – Research on equipment and ability to cut the area. More information required for use of a Brush Cutter. Ian Blackman to assess viability and confirm hire prices.

River Protection and Flood Plain Restoration. This item on the agenda was moved up to 124/20/21 to allow Rob Mungovan to speak in the public participation section of the meeting.

Community Service Committee of the Cambridge Rutherford

Rotary Club - bulb planting throughout the village.

The bulb planting project is planned for the first week in October 2020. Cllr Merrie Mannassi and Cllr Enid Bald invited to attend. They have chosen six to seven locations for planting and have agreed on native species, especially in the cemetery. Consideration of budget for bulbs to be purchased by LPC. **Decision required.** Cllr Enid Bald proposed that a budget be set at £300.00 to be spent on bulbs with any donation from the Cambridge Rutherford Rotary Club reducing that initial outlay. Seconded by Cllr Kate Kell. **All Agreed.** Cllr Brian Cox (Dr) and Cllr Enid Bald offered a personal donation which was welcomed by the Council.

The Meadow Recreation Ground

Linton Cricket Club offer to take over maintenance of the outfield on the Recreation Ground. **Decision required.**

This item on the agenda was put under 129/20/21 to allow discussion whilst regarding the renewal of Ground Maintenance Contracts. Cllr John Bald proposed that the kind offer be declined. Cllr Lee Gardener seconded. **All Agreed.**

To consider funding request for maintenance of the new mower recently purchased with funds from various sources including LPC. **Decision required.** Cllr John Bald proposed that the request for funding be refused at this time. Cllr Lee Gardener seconded. **All Agreed.**

Linton Football Club request for assistance with funding for roll out goals. **Decision required.** Cllr John Bald proposed that the request for funding be declined at this time and that the Football Club apply for an S137 grant in October 2020. Cllr Lee Gardener seconded. **All Agreed.**

Village Enhancement; Street Light upgrade project by SCDC. SCDC require confirmation of lights to be updated to LED. It was agreed that due to the fact that design and cost of the ornate posts was not available the Council would submit details of street lights to be upgraded to LED and reserve the following four lights for consideration to upgrade to ornate once costs and designs were available. Two in Church Lane, one in Coles lane and one in Horn Lane have been earmarked to be ornate.

Cemetery

Overgrown trees in the Cemetery.

Cllr Kate Kell advised that three Ash Trees growing obscurely and restricted by two established Elm trees be considered for felling and one Ash to the left be trimmed back. Further inspection required by Cllr Kate Kell. Replanting to then be arranged in front of the Elm trees to ensure the coverage be preserved.

Linton News.

3 articles required for Linton News - November edition. Introduction for Cllr Parker. Cllr John Bald agreed to an overview of the LPC. Cllr Merrie Mannassi agreed to an article on the Bulb Planting project.

Correspondence items not pertaining to an agenda item.

Proposal of consideration for e-Bike trial. Decision required. Consideration was given for an E-Bike trial and the Council decided that further information would be welcomed but advised to wait until the completion of the Greenways project.

Full Minutes are available on the website.

Clerk.

The Village Hall, Coles Lane, Linton,
Cambridge CB21 4JS Tel: 891001
Clerk to the council – Mrs Jenny Seaward
Email: enquiries@linton-pc.gov.uk
Website: www.lintoncambridgeshire-pc.gov.uk
Facebook: www.facebook.com/lintonpc
Office open: Monday, Tuesday, Wednesday and Friday 9am – 12noon. Closed on a Thursday.
Full Council meetings are held at the Cathodeon Centre, commencing at 7.30pm on the third Thursday of the month, except for August.

PLUMBLINE
PLUMBING AND HEATING ENGINEER
PROFESSIONAL DOMESTIC PLUMBING SERVICE
Including Property Maintenance
Painting: Tiling: Plastering: Carpentry
Call John on
01223 893903
Supcik@talktalk.net
Fully Qualified and Insured
Friendly and Reliable Service No Job Too Small



The Linton Laundry
Shirt pressing
Ironing
Laundry
Eco friendly detergents
Wet Cleaning
Door to door service
Call us on 07894 197805
info@lintonlaundry.co.uk
lintonlaundry.co.uk


zigzagpilates
• Qualified Body Control Pilates Teacher.
• Classes and 1-1 sessions
• Specialising in older and less able clients.
Contact Rachel **07905105081**
Rachel@zigzagpilates.co.uk
www.zigzagpilates.co.uk

Linton Cabs
Airports / Train Stations / Local Travel
07958657300
lintoncabs@btinternet.com

THE 1:1 DIET
by Cambridge Weight Plan®
• ONE-TO-ONE SUPPORT
• FREE WEEKLY WEIGH-INS
• NO JOINING FEE
• STEPS TO SUIT YOUR LIFESTYLE
Contact your local Consultant:
Kim Davidson 07946 462790
email kimdavidson.cwp@outlook.com
facebook CWPwithKim instagram @oneZonedietwithKim



BODY DESIGN PILATES

Pilates Classes
Linton & Horseheath
su@bodydesignpilates.co.uk
bodydesignpilates.co.uk

Su Matthews
REPS LEVEL 4 PILATES TEACHER & BACK4GOOD PRACTITIONER
07986 692 334




kalma
Reiki & Crystal Healing
Reiki & Crystal Healing including children and animals (Linton - You Beauty Cambridge)
Community Reiki Healing Clinic (Linton Village Hall)
Relaxation Classes (Linton, Swanton, Stapleford, Arthur Rank)
Faye@KalmaReiki.co.uk
07815 608897
@KalmaReiki
@KalmaReiki

SHINE
WINDOW CLEANING
TEL. 01223 893529
MOB. 07703 518882
FREE QUOTATIONS
FULL PUBLIC LIABILITY INSURANCE
SHINEWINDOWCLEANINGSERVICES@GMAIL.COM