

Treasure hunt
and craft puppet
show all afternoon
on 16th March
at the URC

Established 1987

Over 2,350 copies
distributed
free in Linton,
Hildersham,
Hadstock &
Bartlow

THE LINTON NEWS

www.linton.info e-mail lneditor@linton.info

Mar
2013
Vol. 26 N° 12
Publication date
Monday 4th March

E & E PLUMRIDGE
Design & Print
41 High Street
Linton
01223 891407

It's not a car park

THE Recreation Ground a car park!

Following a well-attended public consultation last year, it was requested by the overwhelming majority of attendees to ban all vehicles entering or parking on the recreation ground - except for selected groups of users. These included emergency services, Blue Badge Holders and, by prior agreement, those carrying significant amounts of equipment or supplies to and from the pavilion.

For social or sporting events safe parking is available at the village college. This decision was made to ensure the safety of the pedestrians, children using the playground, to minimise disturbance to nearby residents, to prevent wear and tear and to preserve the recreation ground as the major green space in Linton.

Unfortunately, as the recent picture shows, although most residents follow the rules some are still unaware of them or more disturbingly choosing to ignore them. The Parish Council and the Football club are delighted that residents continue to make good use of the pavilion and are working to upgrade the facilities but the agreed policy on parking must be adhered to.

To ensure this happens in the future those ignoring the ban on unauthorised vehicles entering or parking on the recreation ground will be denied the use of the facilities. Regrettably, this appears to be the only option. If you are planning to use the pavilion for a private event and are unclear about the guidelines for parking please contact either the Parish Council or Football Club for clarification or see page 8 of Parish Matters.

Linton Parish Council and
Linton Granta Football Club
lintonpc@btconnect.com



A view of the cars outside the pavilion at a recent event, most of which should not be parked there.

Picture supplied by the Parish Council

Drought resistant plants for that hoped-for summer



A bee collects pollen from one of the plants recommended for a drought. The foxglove is good for shady places too.

Picture taken by Wendy Foster

AT February's Gardening Club meeting Alex and Carol Todd were presented with a basket of fruit and wine to thank them for their many years of service to the club.

Peter Jackson, one of the club's most popular speakers, then gave an interesting and informative talk on drought resistant plants.

Even if there is no drought this year, many gardens will have areas which are dry and sunny and Peter suggested many plants that are suitable for this type of environment. These include achilleas, crocosmia, foxgloves, hibiscus, lavenders, phlox, and sempervivums as well as grasses and box. There are enough types of drought resistant plants available to ensure there is always something of interest to look at.

Peter advised that drought resistant plants need planting very well and initially need lots of TLC and plenty of food and water. However, don't give up, because once established, usually after one or two years after planting, drought resistant plants tend to thrive.

Next month Chris Day from Buckingham Nursery will join us to give his talk *Grow your five-a-day: The Good Life Garden*. We look forward to offering a warm welcome to members and visitors alike at 7.30pm on Tuesday 12th March in the village hall.

This year's plant sale will be held on Saturday 11th May so please think of potting up any spare plants, taking cuttings or planting seeds to donate to the sale. Thank you.

Kirsten Newble 892425 lgcsecretary@yahoo.co.uk

Can you help LIFE?

LINTON Initiative for the Elderly (LIFE) has been in operation since 2006. It is a volunteer befriending scheme for older people in the Linton area who are isolated or housebound. Support provided includes home visits, light tasks and assisting people to access services.

Miriam, who founded the scheme, and Geoff Reynolds have been respectively co-ordinator and chairman since its inception. They may now be relocating to another area,

and the search is on for their replacements.

The co-ordinator requires much experience in care of the elderly and the ability to assess situations and/or needs. The chairman's role includes representing the group (together with the co-ordinator) at meetings with other voluntary groups and also writing reports.

For an informal chat to find out more about LIFE and what the roles involve, please contact Miriam or Geoff on 892645.



Come and talk to the animals at Linton Library



WHY not join the exotic animal experience from 10.30 – 11.30am on Monday 8th April at Linton library. Meet an amazing range of live reptiles plus meerkats and other exotic animals and find out all about them from expert Mitch Price.

You will also have a chance to hold many of the animals...if you dare!

Entry is free but numbers are limited so please book in advance at Linton library.

Children under 10 years must be accompanied by an adult.

The above event is kindly supported by Linton Parish Council.

STORYTIME for the under fives is held from 2-2.30pm on alternate Tuesdays during term. Bring your youngster along for half an hour of stories, rhymes and fun – all welcome – it's free and there is no need to book. Forthcoming dates are 5th and 19th March, 16th and 30th April, 14th May, 4th and 18th June and 2nd and 16th July.

Storytime is delivered by parent volunteers with support from Cambridgeshire Libraries.

Children must be accompanied by an adult.

Anne Worthington



News from Cambridgeshire Fire and Rescue Service

THERE are a few messages the Service wants to remind residents of as we leave the winter months behind.

Get sweeping: Chimneys should be professionally swept and brickwork inspected at least once a year to prevent chimney fires. Our advice is to check yours before and after the winter period.

As the clocks go forward, push the button: Everyone should have a correctly fitted, working smoke alarm in their home. You should test it at least once a week by pushing the button. If you have forgotten to do yours recently, why not test it when you turn your clocks forward?

Easter school holidays: Arson can often increase during the school holidays. Stay vigilant, call 999 if you see a crime taking place and do not attempt to put the fire out yourself. If you are a parent, speak to your child about the dangers of playing with fire.

It's DIY time: We frequently receive an increase in calls relating to homeowners getting into accidents associated with DIY. These can involve electrical equipment which has been stored in a damp shed over the winter and heavy-duty garden equipment. Be careful, read the instructions and take expert advice from a DIY store.

For free home fire safety advice, log on to www.cambsfire.gov.uk Find our fan page on Facebook by searching Cambridgeshire Fire and Rescue, and follow us on Twitter @cambsfrs.

To find out if you are eligible for a free home fire safety check, call 0800 917 99 94.

Too good for jumble...

A COMPUTER system complete with Windows ME, flat screen, etc and a Video VHS Hitachi remote, with instructions plus 40+ videos are both offered this month in as well as the Panasonic KX-FC245E fax machine, a Sengen nappy bin with refill cartridges, a herb garden lollipop bumper for cot, a bookcase (wood veneer) 1.2m long and 1.8m high, a four-drawer metal filing cabinet and 14 wooden chairs with fabric seats and backs.

The shower enclosure raised £25 for the Arthur Rank Hospice, the wine rack raised £15 for the guides and the baby buggy made £25 for Linton Cubs.

To buy any of the above or to offer an item to profit a charity, please phone Kate France 891602 or email kfrance@profsoundconsult.com.

NB: The donor chooses the charity to receive the money.

NOT THE GRANTA RANTA

Once again we don't have a rant this month so I have found another funny, if thought provoking article which, as with all urban legends, is supposed to be true. Editor

When you are old and don't move fast

STEVE Potter, an elderly man, from Halesowen, was going up to bed, when his wife told him that he'd left the light on in the garden shed, which she could see from the bedroom window. Steve opened the back door to go and turn off the light but saw that there were people in the shed removing things.

He phoned the police, who asked "Is someone in your house?"

He replied "No, but some people are breaking into my garden shed and stealing from me".

Then the police dispatcher said "All patrols are busy. You should lock your doors and an officer will be along when one is available."

Steve said, "Okay."

He hung up the phone and counted to 30.

Then he phoned the police again.

"Hello, I just called you a few seconds ago because there were people stealing things from my shed. Well you don't have to worry about them now because I just shot them." and he hung up.

Within five minutes, six police cars, a firearms team, a helicopter, two fire engines, a paramedic and an ambulance showed up at the Potter's residence and caught the burglars red-handed.

One of the policemen said to Steve, "I thought you said that you'd shot them!"

Steve said, "I thought you said there was nobody available!"

Don't mess with old people.

The Linton News would like your help

WE are looking for a sub-editor to be part of the voluntary team which puts together the Linton News every month. Could this be you?

We are looking for someone who is computer literate, who can commit to a few days each month, who will take pride in their work, pay great attention to detail and can work with a team.

A working knowledge or INDD or Pagemaker would be a bonus to us but we are quite happy to train you if not. You will be provided with a mac and a printer to enable you to work on the paper and you may use it for personal use too.

Is this you?

Please contact me at the email address at the top of page three if you would like to join us.

Editor

www.AllstarCleaning.me.uk

'Your local, family run, cleaning company'

Professional, fully trained and insured
carpet & upholstery cleaner
office/shop cleaning
allstarcleaning@gmx.co.uk

Office: 01223 654652 mobile: 07525189675

Benten & Co.
Chartered Certified Accountants

We are a friendly, well established firm, large enough to deal with most accountancy and taxation matters.

Please telephone for an initial consultation (without obligation)

Abbey House, 51 High Street, Saffron Walden
Telephone 01799 523053
www.benten.co.uk

G&W electrical contractors Ltd

Domestic & Commercial
Inspection & Testing

All aspects of electrical
work covered

gandwelectricaltd@gmail.com

07795 595856
07775 853866
01440 420603

LINTON PAVING COMPANY

YOUR LOCAL LANDSCAPING
BLOCK PAVING & PATIO
SPECIALIST.
PROPERTY MAINTENANCE

Int/Ext Painting, General Repairs
FRIENDLY SERVICE.
FREE QUOTATIONS
Tel: Andre Jacobs

01223 890060
07765 594398

Children and teachers have fun



Above: the children enjoy a forensic exploration and below: the staff enjoy themselves as their superheroes.

Pictures supplied by the Infants school

BY the time you read this, the February half term break will be a dim and distant memory. Lighter evenings and longer days are on the horizon.

2013 started with a fun packed half term. The Year 1 and Year 2 children enjoyed the trip to the 50s with Elvis, the 60s with The Beatles and artists such as Warhol and Pollock and then into the 70s when we dressed up as superheros and then super pop stars. Thank you to our parent body who are forever patient with our dressing up ideas! Who knows where we will end up over the coming weeks?

Our Foundation Stage children have been finding out about their personal history before zooming forward in time to meet some aliens. The children had a great time being the forensic team as a rocket crash landed in the school and aliens were spotted about the school site. Luckily after stealing plants and then returning them they returned home, leaving us with the time machine which seems to be stuck on

rewind so I think we may be seeing dinosaurs very shortly.

Our school continues to thrive and this is in part thanks to our committed PSA who recently held an EGM to change their name to Linton Infants PTFA (Parent, Teacher and Friends Association). This change was suggested as the committee are increasingly being offered help from persons within the wider community who are keen to support our fund-raising efforts, so thank you to everyone who supports us.

On the subject of supporting us, we are collecting the Sainsbury's Active Kids vouchers. Last year we collected just over 6,500 which meant we were able to buy some PE mats, bean bags, balls for the playground and various other items. Schemes such as these do go a little way to helping towards the funding cuts all schools are currently experiencing, so if you have any vouchers, they will be very gratefully received by us.

Louise Clark, Head teacher



NEW YEAR TRIPLE FITNESS NEW YOU

THIS JANUARY

2 MONTHS FREE MEMBERSHIP

THAT'S JUST £20.93 PER MONTH!

NEW CORPORATE MEMBERSHIP

CONTACT US 01223 89 11 64

01223 89 11 64

www.triplefitness.co.uk

BARN OWL PROJECTS

Barn Owl Barns
B & B or Self Catering

2 Barns now available - Both sleep 4 in family room

Character properties private & self contained annexe with vaulted ceilings and exposed beams
Double Vintage Cast Iron or King Size bed choice
Additional beds and travel cot available on request

Freeview TV and free WiFi.
Luxury Shower Rooms and Kitchens
Off road car parking

Located in Market Lane just off Linton High Street
easy walking distance of all village amenities

Mobile: 07584 430051 E Mail: Michelle@barnowlprojects.co.uk

Trip Advisor Highly Recommended

www.barnowlprojects.co.uk Ind full photo gallery & floor plans

LITTLE HANDS NURSERY SCHOOL

Little Hands Nursery School
Linton & Bartlow

Offers preschool care and education
for children - 2 years to school age

High staff to child ratio Excellent Ofsted report

Sessions can be booked flexibly throughout our nursery day 9am-4pm in term time
For children old enough for funding (term after their 3rd birthday) 15 hours of sessions can be taken each week with no charge

Optional holiday clubs are available for children aged 2-8 years
Early starts and late finishes are available

For further information please contact
Mandy Norris - Nursery Manager : 01223 897945 e-mail lh-bartlow@btconnect.com
Little Hands is also at Bourn, Melbourn and Newton, visit the website at www.littlehands.co.uk

Linton takes maths to a new height



Bethany Layton and George Crooks read their article to their class for approval

Picture taken by Jen Malone

WOW! What excitement! On Thursday 31st January, we took part in the first ever pupil maths learning walk. We were accompanied by Miss Farr (our teacher) and Mr God-sill (a governor). We walked round Linton Heights watching all the great maths activities happening in the classes. As pupils, we were evaluating how the pupils worked with their teachers, the availability of the planning and also for general class behaviour. The adults were looking for how the teaching assistants helped the children with their learning and the questions that the teachers asked.

The behaviour was exceptional. Everyone was very enthusiastic about learning maths especially when they got the answer correct. All children were listening very carefully. Every class had a maths display which showed lots of different vocabulary for the four operations. There were lots of equipment in classes including clocks, fraction walls and fraction dominoes. There was a variety of different activities matched to the ability of the children. Some groups had support either from a teaching assistant or the teacher. Our findings have been fed back to Miss Malone and the Governing Body.

The maths learning walk was very enjoyable and we would definitely do it again if we had the chance. It was fun seeing how other pupils learn as usually we only get to see what happens in our own classes.

By Bethany Layton and George Crooks - Year 6

BED & BREAKFAST
Mrs Monica Clarkson
4 Harefield Rise, Linton
Tel: 01223 892988
Quiet modern bungalow
Families welcome
No Smoking

For All Alterations to LADIES' or GENTLEMEN'S CLOTHING

Ring **HEMLINE**
Tel: 01223 891034

L.B. CABS LINTON

For all your long and short taxi trips
Airports
Based in Linton

PHONE LINTON
01223 892986

the flower boutique

Treat yourself, your friends and family
to the freshest seasonal flowers.
Bespoke design service for weddings
and funerals.

41 high street . Linton . 01223 891740
www.theflowerboutique.co.uk

PJB Maintenance

No job too small
Ground work, Patios,
Floor & Wall Tiling,
Fencing, Roof repairs,
Demolition
CPSC Licence
Free Estimates

Call **Peter Belsom** on
Mob: 07799 183308
Tel: 01223 891273

easy-drive school of motoring

Tony Holmes
Grade 6 Instructor
1 hour lesson £22
2 hour lesson £40

01223-893346
easy-drive-som.com

Readers write...

Post and email addresses and deadline for letters on this page.

All letters for publication must have a full name, address or phone number to enable us to check authenticity. Letters may be edited. Opinions are not necessarily those of the Linton News.

Anonymous letters will NOT be published but names and addresses may be withheld if requested.

For friends of Joan Lee

Dear Editor

Please can you let your readers know that, Mrs Joan Lee, who previously resided in Brinkman Road, passed peacefully away on Thursday 31st January 2013 and was cremated on 19th February at Cambridge Crematorium. She had many good friends and work colleagues in the village and will be sadly missed.

David Lee, by email

OUR THANKS

Dear Editor,

Please may I express my gratitude and thanks to everyone in Linton and beyond who supported our wonderful post-man, Jamie, in his five marathon walks? Jamie successfully completed all five marathons on five consecutive days, totalling 130 miles. He raised over £1,000, which has been a huge boost to Bridges to Belarus.

The winter months in Belarus are very hard with temperatures dropping as low as minus 30°C. Few of the houses having central heating and the families that we support live in extreme poverty. The children have many health problems related to the Chernobyl disaster. This winter alone we have paid for twenty children to have life-saving treatment that they would not have received any other way. So I would like to pass on my thanks and that of the children that we have helped and their families to everyone who supported Jamie. Every penny donated has been used to its maximum.

Many thanks,

Dr Rachel Furley, Founder and Chair, Bridges to Belarus
Helping children affected by the Chernobyl disaster
UK registered charity number 1109946
www.bridgestobelarus.org.uk

A TOUCH OF NAILS

GELISH MANICURES & PEDICURES

PERFORMS LIKE A GEL APPLIES

LIKE A POLISH

Call Michelle on

07866 017 801

supcik@talktalk.net

HORSEHEATH



IMPROVE YOUR SPANISH AT HOME

experienced teacher

lessons in your own home

free initial assessment/consultation

If you are interested in improving your Spanish contact:

Susan Hodges (01223) 891521

or sjhmac2@yahoo.co.uk

ProClean

Your Complete Cleaning Solution

*Carpet Cleaning *Rugs *Stain Removal

*Car Valeting *Caravans *Motor Homes

*Upholstery Cleaning *Stain Protection

*Floor Cleaning / Scrubbing / Sealing / Polishing

*Pressure Washing of Patios Paths & Driveways

*Domestic Cleaning * Top Ups & One Off Cleaning

*Gutter / Fascia Cleaning

*Contract Office Cleaning (Flexible Options)

TEL: 890433 Mob: 0777 375 8355

74 Bartlow Rd, Linton, Cambridge, CB21 4LY

Linton Complementary Health Centre

2b Bartlow Road, Linton

• Acupuncture, Peter White; MSc, MBACc

• Massage, Peter White; MSc, Dip. Massage

• Shiatsu, Cindy Faulkner; BA, MRSS

• Chiropody, Sharon Bennett; M.Inst.Ch.P

• Counselling, Debbie Soar; NNEB,Dip.Couns

Telephone: 01223 891145

Web Site: www.lintonhealth.co.uk

The Crown Inn, Linton

presents

Treat your mum at The Crown for

Mother's Day 10th March.

Two sittings

12:30 sharp and 3pm.

Booking advisable.

Check out our web site for Easter Weekend Specials

www.crownatlinton.co.uk

11, High Street, Linton, Cambs Tel 01223 891759

Linton WI learns to circle dance

AT our February meeting we welcomed Mrs Pat Welch who spoke about circle dancing, which grew as a means of bonding a community together.

She performed dances from various nationalities, each having its own distinctive style. For instance, gypsy dance concentrates on the pelvis with much shimmying and shaking. By contrast, Russians have a gliding movement, more evident when performed in long skirts. Vertical dance applies to Celtic peoples (Scottish, Irish) with most movement below the knees. Aborigines (Australian, African and Native Americans), with their awareness of the planet, dance down to the earth. His-panic peoples sway their hips and bottoms and clap and stamp a lot, as in flamenco. Jews, being outsiders, danced with little steps and inhibited body movement but a freer, more animated dance emerged when they settled in Israel on the kibbutzes. Greek dancing is traditionally predominately male.

Up to the present day, a dance evolved for every sort of music and, to demonstrate just one, Pat performed the Charleston. Then it was our turn. We held hands in a circle and Pat taught us the simple steps of, first a gypsy, and then a Greek dance. Great fun.

The next meeting is on 5th March, with a talk entitled *Snap out if it!* by Janet and Christopher South. Everybody is welcome.

Sally Proberts

An ACE move

ACE held their first event of 2013 at a new venue - the URC Hall - where Dr Lynne Broughton showed us more treasures of Cambridgeshire Churches

Many churches are much older than you might expect, had a military foundation, or had been more substantial pre-Reformation. Saxon churches, some of which are over 1,000 years old are roughly built, too much mortar and badly cut stone, using what was available in this flinty area. These are reminiscent of my home, Durham, one column decoration even resembled our Lambton Worm.

Whittlesford has a very rude window pediment – we were not sure if it was meant to encourage or deter a certain deadly sin... In contrast, the simple but moving stained glass windows at Swaffham Prior showed the horrors and dangers of war, with Zeppelins, submarines and nursing care. Then there were pew decorations with dogs (eminently stroke-able) and dolphins, so far from the seas.

Lynne has great depth of knowledge, bringing out the life and meaning in our churches – find out more about her work and our churches at www.cambshistoricchurchestrust.co.uk

The next event was to have been a coach trip, but we decided it would be too chilly. So, we will have Soup and Rolls with an entertainment. Don't ask – it is still a mystery to us, too – but it should be fun. That will be at 12.30pm on 21st March at the URC hall.

Events are for all older people: lifts are available.

Enid Bald, 891069

KELVIN SCHOOL OF MOTORING

L


DOE ADI and MIAM

Pass Plus

Instructing for 35 years!

For bookings

01223 892263



16 Back Road

LINTON

www.kelvinschoolofmotoring.co.uk

Small Gifts

Watch batteries and straps fitted while you wait.

Jewellery repairs including sizing and polishing.

All repair work carried out on the premises by a professional with 40 years experience.

We stock a selection of:

Silver Jewellery • Photo Frames • Collectables • Toiletries • Greeting Cards • Gift Wrap





61 HIGH STREET, LINTON, CAMBRIDGE, CB21 4HS

TEL: 01223 894225

Rural Magpie

A store of rescued treasures and hand-painted furniture pieces...



www.ruralmagpie.co.uk

Contact Karen on 01223 894292 or karen@ruralmagpie.co.uk

N. CLAXTON

Painting & Decorating and Property Maintenance

FREE ESTIMATES

Tel: 01223 893487

Mobile: 07724073045

e-mail: n.claxton925@btinternet.com

THE LINTON NEWS

Next Publication 4th March 2013

DEADLINES for ADVERTS Monday 11th March

NEWS ITEMS Wednesday 13th March

ITEMS FOR ADVERTISING MANAGER

Limited space on waiting list for Linton businesses

Changes to ads can be sent to: Judith Rouse

email: adds@linton.info

ITEMS FOR THE EDITOR

Can be put in the Linton News Box in the Post Office

Editor: Wendy Foster email: lneditor@linton.info

phone 891626

For distribution queries contact: Kate France 891602

LINTON DIARY

For entry in this list, ensure that your event is written into the diary in the Post Office, failure to do so could mean non-entry to the diary here.

Please refrain from putting commercial/business dates into the Linton diary, these will not appear in the Linton News.

Only dates for clubs and groups will go in.

You may also send an email with your event details to diary@linton.info, or use the form on www.linton.info.

Call 971797 for an audio version of the Linton News

Details of items in bold type may be found elsewhere in this edition.

WEEKLY

Conkers childrens' centre, 9am-12noon, Mon-Thurs call 07768 008919

Whist drive, 7.30pm Mondays

Chestnutbaby/toddlergroup, 9.30-11.30am Monday term time

Linton Granta football bingo, 7pm Mondays

Linton theatre workshop, Mondays (call Joe 01440 703701)

WEA, Tuesdays, 10am, term-time

Scrabble club, 10am-12noon alternate Tuesdays

Linton Granta toddlers, 9.30-11.30am Tuesdays

Granta bridge club, 2pm Tuesdays

Table tennis club, 7.30pm Tuesdays

Linton chess club, 7.30pm Tuesdays (893509)

Granta duplicate bridge club, 2-4pm Tuesdays

IT club, 7pm Tuesdays

Tots in tow, 10-11.30am Wednesdays, term time only

Linton radio race car club, 6-10pm Wednesdays

Carpet bowls, 7.30pm Thursdays

Parents, carers and tots Mocha house, 9.15-10am Fridays

St Mary's church choir, 7-8.30pm Fridays

Bridge club, 7pm Fridays

For sports centre courses please call LVC sports centre on 890248

CC

VH

CC

Pavilion

VH

CP

LVC

VH

URC

CC

VH

CC

VH

VH

CP

St Mary's

CC

MARCH

2 Farmers' market, 9am

2 Arts & craft market, 9.30am

2 Linton Guides Jumble Sale 2pm

2 Linton annual jazz concert, 7.30pm

3 Jazz session, 2pm

4 Camera Club, 7.15pm

5 Storytime, 2pm

5 WI, 7.30pm

6 Lent Lunch, 12noon

7 Luncheon club, 12noon

7 Parish council meeting, 8pm

9 Music Society concert, 7.30pm

12 VIP group, 2pm

12 Gardening club, 7.30pm

13 Lent lunch, 12noon

16 Treasure hunt and craft puppet show, afternoon

19 Storytime, 2pm

19 History society, 7.30pm

20 CAMTAD hearing help, 9.30am-12noon

20 Lent lunch, 12noon

21 Doctor's surgery closed afternoon

21 ACE lunch and entertainment, 12.30pm

21 Parish council meeting, 8pm

27 Lent lunch, 12noon

LVC

LVC

Linton Infant school

LVC

D&D

CC

Library

VH

38 Symonds Lane

Old Red Lion, Horseheath

CC

LVC

Chalklands

VH

4 Harefield Rise

URC hall

Library

VH

HC

1A Hillway

HC

URC hall

CC

Church pavilion

April

2 WI, 7.30pm

4 Luncheon club, 12noon

6 Farmers' market, 9am

8 Exotic animal experience, 10.30am

8 Camera club, 7.15pm

For Cathodeon Centre bookings contact Sue Mudge, 07765 369266

KEY: CC Cathodeon centre, CP church pavilion, D&D Dog and Duck, HC health centre, LH Linton Heights school, LVC Linton village college, RG recreation ground, URC United Reform church, VH village hall

Library times: Mon closed; Tues 10am-5pm; Wed 4pm-7pm; Thurs 2pm-5pm; Fri 10am-5pm; Sat 10am-1pm.

Linton refuse collection: 11th, 25th March, 8th April

Linton recycling collection: 4th 18th March, Tues 2nd April

STEVE WEBB

Painter & Decorator

Over 30 years experience

CITY & GUILDS CERTIFICATES

Montford Barn

Horseheath

Tel: 01223 893864

Mobile: 07772991373

Westlakes

Painting & decorating exterior and interior

Les Westlake

Mobile: 07929 501101

Tel: 01223 892866

Clive Westlake

Mobile: 07900492127



In your own time

Painting planes



Rob Gauld-Galliers with his Nieuport 17 plane.

Picture supplied by The Telegraph

FOR most people it would plainly be a pain to paint a plain plane but for Rob Gauld-Galliers it's a pleasure.

Rob lived in Claygate, Surrey but came to Linton five years ago. He is a self-taught artist who started out as an architectural model maker with John Piper Ltd. In the late 70s he joined a film company as a storyboard artist but soon moved up to being an art director for many commercials. He fell into the job (his own words), as Art Director on the popular children's programme Thomas the Tank Engine. During this time he learnt to fly and then followed his love of history and built his own WW1 full size Nieuport 17 aircraft. Both Rob and his aircraft flew in the feature film *Flyboys* and he now flies at air shows in the UK and Europe.

His love of history, art and flying have now come together on his latest venture – painting planes. Historically, pilots and crew would select images, often ladies, to decorate their aircraft and Rob uses archive photos today using a grid system to put the design onto the aircraft before painting. All the paints used are made from Insignia colours, the same as those used during the war. Recently the Duxford based P47 took to the air carrying all her new nose art and motifs which took approximately one week for Rob to complete.

Another Duxford based resident, the Curtiss P40F now carries a scantily clad lady on the tail which took a couple of days to complete. At present Rob is illustrating a book, still undercover, based on aviation and characters to be published in May. This is indeed one artist who is flying high.

Sarah Hurcum

BROOKLANDS CAR COMPANY
CAMBRIDGE

DRIVE SOMETHING SPECIAL

PLEASE CONTACT US TODAY FOR A ONE-TO-ONE FRIENDLY AND PROFESSIONAL SERVICE:

Now in association with newmarque.co.uk

LONGSTANTON, CAMBRIDGE CB24 3DW
Tel: 01223 893989 | www.brooklandscarcompany.co.uk

Designer Drapes Tel: 01223890556

Linton rd Hadstock

For all your Curtains & Blinds give us a call.

Curtain alterations.	PATCHWORK LESSONS
Free measuring	Mondays and Tuesdays
Fitting service	Book your place now
Haberdashery	spaces limited
Quilting fabrics	Sewing machine repair and service
Upholstery service	Remnants and Rollends

Fabric sold by the metre

designerdrapescurtains.co.uk designerdrapes2@gmail.com

McKenzie & Haywards Garage

MOT by appointment while you wait
Servicing, Collection & Delivery Service

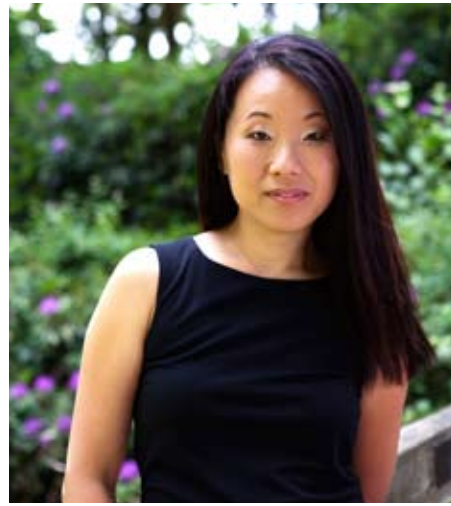
Unit 3 & 4, Lintech Court
The Grip Industrial Estate
Linton, Cambs
CB21 4XN

Tel : 01223 894140
Fax : 01223 890035
mhgarage@btconnect.com

Virtuoso pianist at the Music Society

Jong-Gyung Park who will be performing at the Music Society's next meeting.

Picture supplied by Jong-Gyung Park



AN exciting and virtuoso pianist, Jong-Gyung Park, who has won numerous awards for her playing, is appearing in Linton as the 2011 winner of the Haverhill Sinfonia Soloist Competition.

Her programme for the Linton Music Society on this occasion includes Chopin's *Sonata No. 2*, Britten's *Holiday Diaries*, Schubert's *Sonata in A Major D.664*, *Op.120* and

Ravel's *La Valse*. To hear this exciting artist, come to Linton village college at 7.30pm on Saturday 9th March.

Tickets are available at the door or in advance by telephone or in person from Sweet Talk News, 77 High Street, Linton, tel 893480. Ticket prices are Adults £12, Concessions £10, Students £2.

For more information contact the secretary at lindabird@waitrose.com

Book Festival administrator needed

THE next Linton Children's Book Festival is planned for May 2014 but we urgently need a new administrator to help make it happen. Our Festival is a true community event, involving every school and playgroup in the village, as well as local community groups and area businesses. The Festival was awarded the South Cambridgeshire District Council Arts Award for Outstanding Festival in 2010 and in 2012.

The past three Festivals have been superbly run by Josephine Paterson, who is now ready to hand over the baton to a new administrator. We are looking for someone with a passion for children's literature and the arts, with experience in multi-tasking, working on their own initiative and meeting tight deadlines. This is a freelance, part time, paid contract. We really would like someone in place by Easter.

If you are not sure about taking on this role but would like to get involved, we are also looking for people willing to become part of the volunteer committee. Do you have web skills to help us maintain the website? Do you have contacts in the world of children's literature, to help us attract the best talent? Whatever you feel you can contribute, we'd be delighted to hear from you at info@lintonbookfest.org.

Ron Ragsdale, Chair,
Linton Children's Book Festival

Laura-Jayne's
Freelance Hair and Tanning

NVQ Qualified
15% off first hair appointment!

Prices From:

- Dry Cut £12
- Cut & Blowdry £18
- Occasion Hair £20
- Spray Tan £18
- Deals Available

laurajaynenorman@hotmail.com 07804075356

Su Matthews

Back4Good

BODY DESIGN PILATES

Back 4 Good Practitioner

Level 4 Advanced Pilates Teacher

Back Care Professional

W: www.bodydesignpilates.co.uk

E: bodydesignpilates@hotmail.com

M: 07986 692334

backcare PROFESSIONAL

The Charity for Spinal Health
www.backcare.org.uk
Registered Charity No. 104011

Register of Exercise Professionals

Nina, Carl, Nicola and Sue welcome you to

Boyz 2 Men BARBER SHOP

Opening Hours:

Monday	Closed
Tuesday	9:00am - 6pm
Wednesday	9:00am - 8:30pm
Thursday	9:00am - 6pm
Friday	9:00am - 6pm
Saturday	8:00am - 3pm

Fully air conditioned
LATE EVENING 'TIL 8:30PM
Wednesday

Traditional Hot towel wet shave
no need to book an appointment.

Special rates for senior citizens Tuesday - Friday only

113^A High Street, Linton
Tel: 01223 894481

Boyz 2 Men



Trading Standards

What can you do when retailers face financial difficulty?

WITH well-known high street retailers facing financial difficulty, Trading Standards have the following advice to help protect your money if your goods are not delivered or they are faulty and the company goes into administration.

Credit card purchases

When buying goods or services with a cash price over £100 but less than £30,000, it is advisable to pay for at least part of them with a credit card. Then, if the goods are not delivered or are faulty, the card provider will be liable for the goods too.

Debit card purchases

If you pay by debit card, the provider (bank) or Visa/Mastercard terms may help with any claims. However, this differs between providers so be clear about what assistance you will get for non-delivery or faulty goods. The card agreement will state any terms you need to meet for claims and any evidence you must provide. If you meet the terms for making a claim, but are unhappy with the card provider's response, then follow their own complaints procedure.

For credit and debit card purchases, if you remain dissatisfied with the card provider's response, raise the matter with the Financial Ombudsman Service (FOS) www.financial-ombudsman.org.uk who will decide if the complaint was valid.

Buying by PayPal

The same procedure for claims for debit card payments applies to PayPal payments, as they are signed up to the FOS. Other money transfer services have similar terms to PayPal but may not be signed up to the FOS, so check their terms.

Cash or cheque

If buying goods by cash or cheque then unfortunately this is a case of *buyer beware*.

Gift cards or vouchers for a company that has entered administration are accepted only at the discretion of the administrators. There is no express right to use them.

For further advice or information about any of these matters please contact our partner: Citizens Advice Consumer Service, on 08454 040506. For business advice and support contact 0345 0455206.

2013 Bartlow walk supports prostate cancer

Prostrate cancer is a significant issue for men of a certain age. One third of the money raised by the 2013 Bartlow Walk on 5th May will be donated for research into the cause of this disease at a major centre of excellence, Addenbrooke's hospital.

Times change and with detection rates increasing, it has been found that the average age of the prostate cancer patient is now coming down.

Prostate cancer treatment has been a catalyst for the development of robotic surgery, enabling minimally invasive surgery, thus reducing the time spent in hospital from five days to one day. As a practical example of this revolution, patients are expected to walk about a kilometre before they are discharged.

Addenbrooke's is a national

leader in the bioscience, research and treatment of prostate cancer and has the largest programme of robotic surgery in the NHS in England. This was the first centre to publish a paper on treating 500 patients with the robot and it will be the first to update that figure to 1,000.

Prostate cancer treatment includes surgery (which these days is almost always robotic), radiotherapy, the targeted application of drugs and active monitoring. The continuing research programme assists in the effective combination of these approaches for the best outcomes.

We are indeed fortunate to have this fantastic expertise on our doorstep and to be able to make a small contribution to its continuing success.

Graham Howat
Walk Organiser

G. DYE & SONS
GENERAL BUILDERS,
GROUNDWORK & MAINTENANCE,
CONSERVATORIES & UPVC WINDOWS, KITCHEN & BATHROOM REFITS

ALSO INTERIOR & EXTERIOR DECORATING
REFERENCES AVAILABLE

39 The Grove
Linton
Cambridge
CB21 4UQ

Tel: 01223 892089
Mobile: 07961 342887
georgedye738@btinternet.com

Free Estimates

TIM PHILLIPS & Co.
Accountants
Established 1991

Independent, specialist service for:
Small Business • Self Assessment
Personal Taxation

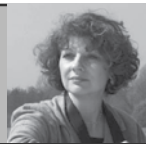
Free initial consultation – no obligation
EASY, FREE PARKING

Copley Hill Business Park, Cambridge Rd., Babraham
Off A1307 between Wandlebury and Babraham
Tel: 01223 830044. www.tpaccounts.co.uk



Linton Country Diary by Darryl Nantais

Illustrated by Maureen Williams



The original jay

THERE'S nothing quite like holding an original in the palms of your hands.

Now, I've been writing the country diary for the Linton News for many years and those who know me will be aware of the special connection and admiration I express for the *Covidae* family. It's a cosmopolitan group of oscine passerine birds to include crows, rooks, ravens, magpies, jackdaws and choughs.

For me they stand out from others by wondrous wit, comedy and charm. They possess more myth and memory and consequently share similarities to a form of intelligence displayed by the typical human. I've reared many corvine in my time and unreservedly vouch

for their amazing ability to distinguish between those of us wishing to cause them harm and those that don't! As a young man I was accustomed to being told to grab a rifle or trap, and on one occasion an air gun, with the remit to clear the spinney of those pesky French *Geai*.

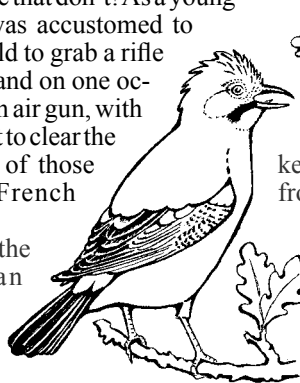
Now the Eurasian jay is a fine bird, also belonging to the crow family and, it is said, from which all other jays originate, including the American Blue. So off I'd go with hearty conviviality and

good cheer to shoot the tops off trees – job done, not a single jay harmed but I returned armed

with a handful of beautifully coloured feathers to show as proof of kill. These I'd kept for making fishing flies from an earlier find of a more natural end, coming in handy to fool the farmer into believing my infamous accurate shot had done the trick! I, very belatedly, apologise for my witty deception to avoid pointlessly killing one of the most interesting and beautiful birds in Europe.

Now far be it *juste* for me

to tell such a youthful porky but could I really believe the jovial jay was responsible for such mass devastation and mayhem in the woods? Well, that old fashioned game keeper certainly wanted us to believe so, thus citing the jay as the main culprit for stealing the game bird eggs and young. Obviously, one breakfast time I discovered they were not the only creature with a passion for eggs, yet our exotic friend with its pink and vivid blue colours made for an easy scapegoat and target despite their varied diet. Today, in Linton, it's the turn of the magpie to be hauled before the beak! Who is next? Perhaps it's time to give our crow family a break from this persecution and live in harmony.



Jay

PLODDING ALONG

An update on police matters

WHY not register your belongings on IMMOBILISE.

It is a free service where you can register all kinds of equipment which have serial numbers on them.

Alternatively, for a small fee you can also add photographs of items without serial numbers, ie jewellery. This way should any stolen items come into the possession of the police, we will then know who the owner is so that you can be reunited with your property and we have a better chance of convicting those in possession of the stolen items.

For more details please see

the following website www.immobilise.com

Please have a think about joining a Neighbourhood Watch Scheme in your area.

The information and work done by Neighbourhood Watch is of great help to us. Further details can be found on the following website: www.cambsnhw.org.uk

PCSOs 7239 Leanne Fisher and 7081 Chris Pulley, part of the Safer Neighbourhood Team for Linton Beat.

In an emergency call 999, for all non-emergencies, general enquiries and to report crime please call 101.

PLODDING ALONG

More police matters

BETWEEN 24th Jan and 6th Feb approximately 50 tonnes of sand, 50 tonnes of gravel and £600 of red diesel were stolen from a site at The Grip Ind Est, Linton. Enquiries are still ongoing. If you have any information regarding the above crimes which may be able to help us then please contact us on 101.

Please continue to report suspicious activity in your area, no matter how insignificant you think it may be.

We have also received some reports of telephone scams again. The most common appears to be a call from someone telling you that there is a problem with your Broadband main server. They will then ask you to help them gain access to your computer. Apparently they infect your computer with a virus then charge you a fee to clear it, almost like a sort of cyber protection racket. Obviously the advice is not to give sensitive details over the phone.

I would also advise you to terminate the call as soon as possible because, clever as they are, they may be able to access your computer by hacking in through the phone line, given time. There is something that you can do about this if it happens to you.

Below is an extract from the *Action Fraud* website. If you are concerned that you have been the victim of a telephone or online scam or if you think someone is trying to scam you, contact this website: www.actionfraud.police.uk

Action Fraud is the UK's national fraud and internet crime reporting centre 0300 123 2040

We provide a central point of contact for information about fraud and financially motivated internet crime. If you've been scammed, ripped off or conned, there is something you can do about it – get in touch with us.

The next police surgeries will be held at Linton Police Office at the Fire Station from 12noon-2pm on Wednesday 13th March and from 12noon-1pm on Sunday 24th March.

What are police surgeries? Police surgeries are a chance for you to come and meet your local officers to discuss any issues or concerns that you have in your village, or you could just come for a general chat. We are happy to conduct surgeries at other venues and times. Whatever suits you. Just let us know. Police surgeries last one to two hours. PCSOs 7239 Leanne Fisher and 7081 Chris Pulley



The Dog & Duck

63 High Street, Linton

Tel: 01223 890349

Pub & Restaurant

Open All Day, Every Day

Idyllic Riverside Thatched Pub and Restaurant.
Hearty Home-Made Pub Food.

Be Assured a Fantastic Welcome and a Perfect Pint!!

Re-opening 6th March following our make-over

Bookings now being taken for

Mother's Day 10th March

Check us out at

www.facebook.com/thedogandducklinton

Chapel

Independent Financial Advisers

SPECIALIST ADVICE ON
Pensions - Investments - Mortgages - Protection
Personal Financial Planning

FREE Initial Consultation & Without Obligation



Ian Cross DipPFS
01223 892821

email: Chapelifa@btinternet.com

De-Salis House, 6 Hillway Linton, Cambs, CB21 4JE

A Member Of Sesame limited Which is Regulated By The Financial Services Authority
YOUR HOME IS AT RISK IF YOU DO NOT KEEP UP THE PAYMENTS ON A MORTGAGE, OR ANY OTHER LOAN
SECURED UPON IT. WRITTEN DETAILS ON REQUEST

1 2 3 4 5 off to Kumon I go, at maths and English I'm a pro, all my answers are right and my future is so bright!

Maths and English Study Programmes

Kumon can help your child progress with their maths and English studies, boost their confidence and help them shine.

Every day Kumon helps children of all ages and abilities to realise their true potential. With over 600 centres nationwide, it's convenient too.

Contact your local Instructor today.

Mrs Karen Tumber
Linton Study Centre
01223 893578

KUMON
Every child can shine

kumon.co.uk

Acupuncture and Massage in Linton

Some of the conditions acupuncture can help ...

- sports injury and tension
- back, knee, hip, shoulder and elbow pain, rheumatism
- fertility optimisation, IVF, pregnancy and menstrual
- headache and migraine, stress
- high blood pressure and circulation conditions
- anxiety and addictions

Peter White MBACc, MSc, MBACc.

Call: 01223 891145 for an appointment or free assessment

Email: enquiries@lintonhealth.co.uk

Discreet Pest Prevention & Control

A J PEST CONTROL

FAST AND EFFECTIVE

PROFESSIONAL SERVICES

COMMERCIAL - DOMESTIC - AGRICULTURAL

• Wasps, Hornets & Flies

• Mice and Rats

• Fleas, Bed Bugs and Ants

• Bird Control

• Squirrels and Rabbits

• Cockroaches

Based in Linton

Contact: 01223 530988 or 07855478824

www.ajpestcontrol.co.uk



MALLYON & DONALDSON

Linton

Specialising in both Modern and
Traditional building methods.

Tel: 01223 891267

Mob: 07941 220868

All contracts finished to a high standard.
Reliable service. Local references available.



The Pear Tree Inn

High St, Hildersham

01223 891680

peartreeinn@btinternet.com

www.peartreeinn.cambridge.co.uk

Opening hours:

Tues-Sat open 12-2.30 & 6-11

(food orders 12-2 and 6.30-9)

Sunday open 12-2.30

(food orders 12-2)

Closed Sunday evening and Monday

LATEST REVIEW ON TRIP ADVISOR:
"The real gem, however, is the adjoining pub, which boasts some of the best-kept beers I've ever encountered. The food is a wonderful thing: a steak and ale pie was rich and delicious, and came with a little pot of homemade chutney which was just mindblowing. The atmosphere is quiet and warm - perfect for good conversation over the brimming pint glass."

POT POURRI 96

How many numbers?

HOW many numbers from one to one million are not perfect squares or perfect cubes?

Hint: some numbers are counted twice – careful does it.

Solution to 94 - How many books?

2571 books were given away.

Urania

NEWS IN BRIEF

A change for the Table Tennis club

LINTON table tennis club has moved venue and will now be meeting from 7.30pm until 9.30pm every Tuesday night in the United Reformed church hall.

We now have the use of three tables in a bigger space, so hopefully this will allow more people to join in and play.

For more information please contact me:

Kirk Archibald, 897226

Linton Tennis Academy lessons

OUR apologies, we got the code wrong on the article about the tennis academy last month, it should have read: Suzanne Pattinson, 07720 300974.

The adult and children lessons are continuing and a new term will start after Easter.

Editor

Aztecs JFC 70s and 80s night

AZTECS JFC will be hosting another 70s and 80s night at 7.30pm on Saturday 16th March at Linton Pavilion.

So, if you fancy getting dressed up in some 70s or 80s partywear, dancing the night away and having some fun, then buy your ticket now.

Tickets are £10 per person, and there will be a money prize draw during the evening. All monies raised will support the Aztecs JFC fundraising, and be used to continue to provide football and training to over 200 children.

Please support this valuable local resource and enjoy what will be a fantastic, fun party!!

For tickets or more information, please contact Jeanette Long at jeanetk@yahoo.com or Pete Hounsborne, 07887 802060.

Jeanette Long

Tea dances and more at Strictly

AS well as ballroom and Latin classes, the Strictly Dance Studio in The Grip, also offers, Line Dancing, Zumba and, every Friday, Salsa for beginners and improvers.

Every month there are dance and social evenings and afternoon Tea Dances. The popular tea dances are every 3rd Wednesday of the month from 2pm until 4pm. A small entry charge includes tea and biscuits. No partner is required, just dance the afternoon away and meet new friends.

For further details, visit our website www.strictly-dancecambridge.co.uk or call Graeme on 07760 143901
Graeme Hein-Jones

History society for March

AT 7.30pm on Tuesday 19th March at Linton village hall, David Cleveland will be talking about Village life in East Anglia. David will give a running commentary to a series of films shot in and around Cambridgeshire, including a snippet of the first moving film in 1897.

All are welcome.

Andrew Westwood-Bate, a.westwoodbate@gmail.com



The Derbyshire Post



I DON'T often watch the local news on television but for some reason I found myself watching it a good deal in January and became increasingly dismayed: one programme was attacking headteachers in Suffolk schools for their poor position in the GCSE league tables, another was criticising heads of state comprehensive schools and singing the praises of selective grammar schools and another was blaming heads for closing their schools at the slightest hint of snow. Isn't it someone else's turn to get picked on, I began to feel? What about traffic wardens or dental hygienists next week?

The snow story was a particularly vicious attack and one designed to whip up public anger. Heads who had not closed their schools were being held up as shining examples, those who had were being attacked by presenters with little understanding of the issues involved.

So, I thought I might take a few minutes of your time to explain what those issues are on behalf of the four schools in Linton so at least Linton News readers can understand how decisions about closure on snowy days are made.

When a headteacher wakes up to snowfall they have three considerations:

1 Can I clear my school drive and make my site safe in time for the start of school?

2 Can my staff make it into school from their homes, usually miles away, in order to supervise the children?

3 Will the buses run? The bus companies have their own risk assessments to determine this.

If the head can answer "yes" to all three questions they are safe to open. If the answer is "no" to any then they have to close. Whether your staff can make it in depends on where they travel from. This is why it is possible for four Linton schools to make four completely different assessments of the risk in opening: why LVC and Linton Infants stayed open on 21st January and the Heights and Granta closed. All the heads made the right decisions for their schools. Only they had all the cards in front of them to inform those decisions.

I actually opened my school on the snow day in January because Camgrain came round at midnight on Sunday to snowplough the drives, because the caretakers were up bright and early to do the paths and because our Cambridgeshire highways, at least, had been gritted and were driveable. Teachers made it in, the buses were running – there was no reason to close. However, even opening was a really controversial thing to do: I had messages on every form of social media and communication technology from parents (not their children – that I'd have expected) saying that they wanted a snow day and were keeping their children off. As the old saying goes, you are damned if you do and damned if you don't. When it comes down to it, every school has to make its own decision and stick with it, then ignore the inevitable moaning.

I await the spring with eagerness.

Caroline Derbyshire



The Way We Were by Garth Collard

37 and 39 High Street



Above the High Street showing the cart and the lamp and below a view of the premises.

Pictures courtesy of
The Cambridge Collection



ORIGINALLY one timber framed house built of brick, stone and plaster, 37 and 39 High Street had shops attached. Most of it dates from 17th century with 18th and 20th century additions.

In 1600 a tailor, Robert Thorpe, owned a small close, house and barn on the site and by 1688 his great grandson Thomas Law a glover and saddler lived here with his wife Rachel and nine children.

The property was bought from the Law family in 1811 by Robert Pitt an auctioneer who was also agent for medicines produced by Dr Solomon of Liverpool. The most expensive remedy seems to have been Cordial Balm of Gilead, claimed to cure the weak and infirm, for youthful imprudencies, venereal complaints, nervous consumption and feminal weaknesses, sold for half a guinea (10/6d) a bottle.* He also sold cough mixtures, lotions for skin diseases and antibilious laxative pills. Presumably he upset some people as in 1807 both he and his neighbour William Day were assaulted by a local man. The assault could not have been very serious as the perpetrator was only fined one shilling.

Pitt retired from his auctioneering business in 1809 and died in 1812. His effects included excellent feather beds, a handsome eight-day clock and a 40 gallon brewing copper. The auctioneering business was bought by William Drew who also traded as a book-seller and stationer. The house was divided into two in 1871.

William's daughter, Sarah, married a Little Dunmow farmer named Nathan Worin and the family lived at number 37 until 1896.

A grocer and draper at 33-35 High Street, Richard Holtum junior was postmaster from 1869 and bought 37 and 39 for £260 for the telegraph and post office. He began delivering parcels in 1883.

Richard transferred the business to 37 High Street. He then let the house and post office to Mary Nottage who

later married a postman, John Moore who died of a heart attack in 1912. Mary continued as post-mistress until she had a stroke in 1920. At that time there were three collections and two deliveries each day, reduced to two deliveries on Sundays. The Sunday service was discontinued in 1917. Mary Moore retired in 1920 after working in post offices for over 55 years, 51 of which were in Linton.

The post wagon started at West Wrating at 7am and collected the mail from most local villages on the way to the main Cambridge post office. The post was delivered around the local post offices on the return journey. In 1923 the Linton postman Alfred Whiffin retired after 40 years service.

A letterbox set in the wall of No 37 was replaced by a free-standing post box in 1931 and a telephone kiosk – a bench mark for dating photographs of the High Street.

Many people will remember the property as occupied by a hairdressing salon and Lloyds Bank.

Patrick and Audrey Ray bought both properties in 1960 where they opened a hairdressing salon called Cuts and Curls, renamed Studio 2000 in 1986. Both shops were let in 1998, No 37 for £5,000/year and No 39 for £2,000/year.

* A guinea = 21 shillings (/-) The average wage was 8/- a week and rents were 5/- a week. The lord of the manor's income from Linton properties was £200 per annum.

PLANNING APPLICATIONS

S/2626/12/FL Mr Stephen Wain, 69 Bartlow Road. Erection of fence.

S/0089/13/FL Mrs M Baker, 12 Meadow Lane. Two storey rear extension

S/0206/13/DC Mr & Mrs Keith and Hilda Whiting and Palmer, Summerfield House, 1 Mill Lane. DOC-re-roof lean-to ext in slate, re-lead bay window, remove windows at sitting room and block, replace metal windows in bay with timber, works to rooms in loft incl replacement window, install shower room, rooflight.

S/0222/13/FL Mr Terence Chipps, 37 Wheatshaf Way, Change of use from part children's daycare nursery/part residential to residential.

A.J. COPELAND & CO.

Chartered Accountants, Linton

*Audit, Accountancy, Tax and Consultancy Services
for Business and Individuals*

Computerised Self Assessment Tax Return Service

For FREE initial consultation phone

01799 506602

Email: ajcopeland@compuserve.com

website: www.ajcopelandca.co.uk

BUSINESS



ALEXANDER SMITH

GCC-Registered Chiropractor

MOBILE CHIROPRACTIC

SERVICE

01223 967565

SOUTH CAMBS AREA

(Based in Linton)

Effective care in the comfort of your home

- Low back pain & sciatica
- Neck pain & headaches
- Muscle spasm/tension
- Shoulder & Knee pain
- Postural problems

www.alexandersmithchiropractor.co.uk

HAIR BY JO DENNY
Women | Men | Children

41 Linton High Street
(Behind North's Bakery)
t: 01223 893 285

MOPS HAIR SALON

Carpentry, Plumbing, Tiling
Door/Window Replacement
Kitchen/Bathroom Refitting

Fencing & Decking
Painting/Decorating
Flat Pack assembly

Property Maintenance

Steve Jackson

stevejacksonltd@hotmail.co.uk

Aerial Upgrades & installations
Satellite dishes installed

Steve Jackson
Office 01223 893896
Mobile 07963 854653

B Haylock

Wood Flooring
&
Carpentry

Supply and installation
Free quotations

Home viewing
of samples

Mob: 07734057520
Tel: 01223 890418

GEOFF

NORBY



Reg No. 34107

PLUMBING & HEATING ENGINEER - Estd. 1966

All aspects of Central Heating and Plumbing

Boiler Service & Maintenance

Bathroom Suites & Power Showers

Kitchen Installations - Tap Washers

Telephone 01223 892311

Mobile 07885 068047

geoffnorby@tiscali.co.uk

Made to Measure
CAPRI BLINDS

* Verticals * Roman * Roller * Pleated
* Venetian * Wooden

CALL NOW FOR

free quotation - free measuring - free fitting
*Blackout blinds in a range of
colours always available*

Tel: 01223 894020

www.capriblinds.co.uk

**GLENWOOD
BOLTS & SCREWS LTD**
www.glenwoodbolts.co.uk



SUPPLIERS OF QUALITY
FASTENERS, FIXINGS &
SILVERLINE TOOLS

Unit 2 Lintech Court
The Grip Industrial Estate, Linton
Cambridge, CB21 4XN
Tel: 01223 892095 / 893931
Fax: 01223 894122

Elite
Wedding Photography™
Professional wedding photography since 1969

Let your memories last a lifetime

At Elite Wedding Photography our goal is to
capture your wedding day to the highest standard.

Tel: 01223 892056
eliteweddingphotography.co.uk

LINTON HAND CAR WASH LTD.

WE KNOW HOW TO WASH AND PROTECT YOUR CAR!

WASHES FROM £5

FULL VALET FROM £35

OFFER ON WAXING!

HEAD LAMPS REGENERATION

AUTOSPA

AND MORE....

BOOK WITH US ON LINE

OPEN 7 DAYS A WEEK
8AM-6PM

EVERY FRIDAY TUNING CAR WASH FOR
ONLY £5 FROM 6PM-8PM

EVERY SUNDAY CUSTOMERS OF LINTON ZOO
CAR WASH FOR ONLY £5 FROM 6PM-8PM

OR VISIT US!

Contact us on:

website: www.linton-hand-car-wash.co.uk
email: kamil@linton-hand-car-wash.co.uk

UNIT 1, LINTECH COURT, THE GRIP IE LINTON, CB21 4XN.



Parish Council Matters

Planning ahead

Parish Council Matters is written, edited and published by the Parish Council with the support of the Linton News Team.

Locums and localism at the health centre

RELIABLE sources report that the burning topic of discussion of the unfortunate Lintonians who found themselves crowded into the hard-pressed health centre this winter has not been the spread of the dreaded norovirus but the often repeated question: 'What will happen if they build more houses?' Clearly, anxious residents have been expressing their concern and a certain helplessness at the prospect of the further expansion of Linton. They were worried about the impact of more and seemingly unstoppable housing development on our already pressurised health services, schools, roads, environment and quality of life. Unhappily the residents have good reasons to be concerned.

The 'democratic deficit' in the planning process

The problem with the current planning process is that elected councils and local residents are often completely outgunned and outmanoeuvred in terms of money, resources and expertise by developers proposing new housing projects. Developers and land-owners are often prepared to lobby intensively and 'expensively' for over a decade in order to wear down the objections of elected local councils and communities. This is what has been termed the 'democratic deficit' in the planning process in which the wishes of local communities and councils are often ignored, sidestepped or overridden. An example of this happening in Linton was the recent construction of Nichols Court despite well-founded objections by the parish council and residents about the scale and certain design aspects of the project. Also the recently approved redevelopment of the old police houses site for affordable dwellings was welcomed by the parish council in principle. However the parish council had concerns about the detail of the development and sought some changes on behalf of residents which SCDC did not accept. Other recent examples are that, despite having had their immediate plans turned down by South Cambridgeshire district council (SCDC), developers Carter Jonas and Bidwells show no sign of giving up their long term development strategies on behalf of the Diocese of Ely and Pembroke College. These include building a considerable number of dwellings on greenfield sites south and north of the Horseheath Road and both sides of the Balsham Road. Additionally, both the Diocese and Pembroke have (through Bidwells and Carter Jonas) objected to a proposal to develop the brownfield site next to the old police houses. It is difficult to see why bodies such as the Diocese of Ely and Pembroke College should be regarded as legitimate stakeholders in the decision making process for a potential local development.

The new local plan for South Cambridge

Encouragingly in 2011 the government also came to the view that action was needed to ensure that local communities and councils had a more meaningful say in the planning process. Since then government has been pressing bodies such as SCDC to implement new local plans (LPs). The LP is a statutory planning document which sets out SCDC's preferred strategies for growth, transport and housing development for the next 20 years; and aspects of the LP have developed in co-operation with Cambridge City Council (CCC). Broadly speaking the future strategy of SCDC and CCC for housing is to concentrate on the large-scale development of new homes in Northstowe, Cambourne and Waterbeach where the necessary infrastructure is already in place to support such development or where there is space for this to be built. The LP also generally favours housing development on the fringes of Cambridge City and the north and east of Cambridgeshire rather than the south and west. This is because the favoured areas have better transport links, especially by rail and the guided busway,



to Cambridge which is the major centre of employment. Hence, if accepted by government, the new LP will relieve the pressure on some (but not all) villages like Linton which are located in the south of the SCDC area.

The Localism Bill 2011 and neighbourhood plans

Additionally, the ailing residents in the health centre were doing 'informally' exactly what the government's Localism Bill now empowers them to do 'legally'. That is to debate the location, type and scale of any proposed development which impacts on their communities and to decide *what they feel is needed, appropriate and sustainable*. Their views will then be incorporated into new and statutory neighbourhood plans (NPs) which will specify the type, scale and location of local development. The key word here is *statutory* which means that, once in place, NPs cannot be ignored or sidestepped by private developers or any public body with responsibility for planning. This is a major change in the planning process and a significant step in addressing the democratic deficit in planning. The first NPs are expected to be in place in three years' time and in most rural communities, the development of the NP will be led by the parish council. Linton parish council is committed to localism and sees the development of an NP as vital for securing the future for Linton that the residents themselves have decided upon. Further details of NPs and the progress of the NP for Linton (LNP) will, I am sure, follow but there are four main stages in implementing an LNP. These are as follows:

- Agreeing and submitting the designated area of the NP to SCDC; this might include working with other parish councils such as Hildersham.
- The formulation by all interested parties of an 'issues and options' strategy document which identifies the main alternatives for meeting housing needs, transport, promoting sustainable economic growth, protecting the environment and quality of life. The strategy is then evaluated by SCDC and other experts and put out for an initial consultation with residents.

- Following the stage one consultation, a detailed LNP is drawn up and a further consultation takes place and, if required, the LNP is amended and again independently evaluated.

- The finalised LNP is circulated and, if approved by a majority of residents in a referendum, the LNP then has to be accepted by SCDC as part of their LP and by other parties such as developers.

Importantly an NP is not only about housing but would also ensure that Lintonians had a say on the future 'spatial strategy' for the village. This includes not only housing and other development but also the provision of land for recreation and allotments - both badly needed in Linton. Through an NP, local communities can also make choices about what are appropriate strategies for protecting the local environment, heritage, bio-diversity and general quality of life. An NP might also include provisions for new village amenities such as a bigger village hall or a new community centre or even a small 'enterprise zone' if there was a need. Therefore, as well as restricting inappropriate developments, NPs are very much about protecting the environment, meeting local needs and contributing to sustainable development and economic growth. But NPs cannot obstruct the policies of other key bodies such as the highways and environmental protection agency and must not propose less development than is specified in the LP, but fortunately for Linton not much has been proposed so far. Instead NPs can only propose additional development and/or development of a different type or 'mix'. This might mean in Linton proposing more smaller social or market-led housing sites rather than one or two large scale market-led housing developments. So, in conclusion, overall SCDC and CCC are confident that their strategy as set out in the new local plan will meet government targets for economic growth and new houses in our area without more major development in Linton. But until the SCDC local plan is approved and a neighbourhood plan for Linton is in place, expect the developers to keep trying.

Cllr Paul Poulter

Linton Cabs TAXI

Pre-book only Linton based taxi service

Airports - Train Stations - Local Travel

Tel: 07958 657300 / 01223 890965
Email: lintoncabs@btinternet.com

DACRE LONG

Local Painter and Decorator

66 Chalklands, Linton

Professional work to highest standard for over 15 years

Trade and Private Customers

Free quotes with written specification

Phone 01223 893176 or 07837513837

Discounts for Senior Citizens

AJB FENCING

www.ajbfencing.co.uk

Fencing - Decking - Gates

All Groundworks

Free Quotations

Quality Service

01223 894795
07813 070542
andy@ajbfencing.co.uk

Students
20% off

THE ROOM

37 Bartlow Road, Linton
Tel: Pippa (01223) 890890

Special Kids
Prices

OPENING TIMES

Day	Time	Notes
Mon	Closed	
Tues	9-5 pm	
Wed	9-7 pm	
Thurs	9-7 pm	
Fri	9-5 pm	
Sat	9-3 pm	

Senior Citizens
Tuesday & Wednesday
Late opening until 7 pm on Wednesday & Thursday

LEARNING DIFFICULTIES STUDY SKILLS TUTOR

I offer tutoring in practical learning skills and strategies for Primary and Secondary school students and adults

I am an experienced and successful teacher at Secondary / 6th form, with a background in Psychology, Research and teaching at Cambridge University

Contact Sheila Bennett
Tel: 01223 890171

CHRISTOPHER MARKHAM

HOME & GARDEN SERVICES

Interior/Exterior Decorating

Fencing, Guttering

Turfing, Garden Clearance

Lawn & Hedge Cutting

Decking & Patio Cleaning

Patios & Driveways

Call on
(01223) 892889
or 07973294946

No job too small...

PLUMBLINE

PLUMBING AND HEATING ENGINEER

PROFESSIONAL DOMESTIC PLUMBING SERVICE

Including Property Maintenance

Painting: Tiling: Plastering: Carpentry

Call John on
01223 893903

Supcik@talktalk.net

Fully Qualified and Insured

Friendly and Reliable Service No Job Too Small

Watkins Joinery

- FITTED KITCHENS / BEDROOMS / WARDROBES
- CABINET MAKERS
- BESPOKE JOINERY
- DOORS / WINDOWS / STAIRS
- WOODEN FLOORING
- CONSERVATORIES
- EXTENSIONS / REFURBISHMENTS

20 YEARS' EXPERIENCE
INSURANCE WORK
UNDERTAKEN

Tel.: 01223 890600 Mobile: 07802 885390
colin.watkins@keme.co.uk

Councilminutescouncilminutescouncilminutescouncilminutes

ABBREVIATED minutes of the meeting of the parish council held at the Cathodeon Centre on Thursday 17th January 2013.

Present: R Hickford (chairman and district councillor), Mrs E Bald (vice chairman), D Champion, Ms E Cornell, Dr B Cox, Mrs S Dew, Ms T Hunt, B Manley, Ms M Mannassi, G Potter, P Poulter, K Wakley, Mrs A Walker, Mrs J Wilson and Mrs S Parry (clerk). County councillor J Batchelor, district councillor Mrs T Bear and Mrs K France (press) were also in attendance with one member of the public.

Apologies for absence: Councillor Penfold.
Chairman’s comments: It was agreed to plant a tree, in Chalklands, in memory of Carol Hill.

The council had received an invitation to the ATC presentation evening at Linton village college on 1st February. Cllr Champion would attend.

Written report from the county councillor: Noted.
Written reports from the district councillors: Noted.
Cllr Walker reported concerns of residents regarding housing. This was passed to the South Cambridgeshire district council (SCDC) councillors.

Pavilion update: Cllr Poulter proposed that a 10 year lease on the pavilion on the terms already agreed with Linton Granta football club and a commitment for the necessary expenditure required to register the lease with the land registry be agreed. The proposal was seconded by Cllr Champion and resolved by the meeting. Cllr Manley, on behalf of the football club, agreed to pay the cost of the land registry element estimated to be in the region of £200.

Confirmation of the offer of a grant of £10,000 towards the installation of new changing facilities had been received from the Football Association National Sports Centre Trust. The relevant paperwork would be signed by the chair.

Allotments update: A letter had been received from the Diocese of Ely confirming that the council’s interest of purchase

proposal would be included on the agenda for the next investments committee meeting in February. Cllr Cox stated that the Diocese would be obliged to obtain the maximum income from the land. Cllr Poulter responded that they also had a duty to obtain best value for the community and themselves to enhance the reputation of the trust.

Written reports: A1307 - report to steering committee - Cllr Cornell gave a verbal report. She stated that there was substantial peak time growth of traffic but better monitoring was required. St Edmundsbury Borough Council and Suffolk County Council had contacted SCDC to support the Linton policy which prohibits development south of the A1307. They were concerned that this additional access road would lead to more congestion and delays.

Cllr Cornell thanked Cllr Hickford for his work in organising the steering group meetings, the next of which would include local businesses.

Cllr Batchelor left at this point to attend another meeting.
Correspondence received for consideration: Dr J Rossiter had concerns regarding the proposed development in Haverhill and its possible flooding effect on villages downstream. Cllr Cox reported that he had advised Dr Rossiter that this water flowed into the tributaries of the River Stour and not the River Granta.

Mr Edgar had concerns regarding problems in the Green Lane area. It was agreed to advise him of the council’s proposals for a new parking scheme outside the Co-op. The county council were in the process of drawing up detailed plans.

The SCDC reminder of the local plan issues and options two consultation from 7th January to 18th February was noted.

Damage to areas of planting in Paynes Meadow was noted and Cllr Bald had issued a report. It was agreed to place signs advising of the new planting area and for residents to use the footpath. Fluorescent tape would be strung across the fence.

It was agreed to request that the commemorative plaque from



Fields-in-Trust (pictured left) be wall mounted and placed on the pavilion.

Consideration of quotations for the restoration of the war memorial: It was noted that a historic building’s grant of £500 had been pledged from SCDC. Cllr Cox proposed that the quotation from Fairhaven and Woods Ltd for £1488+VAT

be accepted. The proposal was seconded by Cllr Hunt and resolved by the meeting.

Note: Copies of the full minutes, reports and documents referred to above can be inspected at the parish council office.

LINTON PARISH COUNCIL
Linton Village Hall, Coles Lane, Linton,
Cambridge CB21 4JS Tel: 891001

Clerk to the council – Mrs Sue Parry
Email: lintonpc@btconnect.com
Website: www.lintoncambridgeshire-pc.gov.uk
Office hours: Monday 9am–12noon and 4–5.30pm, Tuesday–Friday 9am–12noon
Or by appointment

Dates for full council meetings:
7th and 21st March, 4th and 18th April 2013
All meetings held at the Cathodeon Centre commencing at 8pm

Rules and regulations for recreation ground access and pavilion parking

Rules for vehicular access to the recreation ground
THE only vehicles permitted to drive along the footpath to the pavilion are emergency and utility service vehicles, those making essential deliveries/collections and drivers issued with a permit from the parish council (PC) due to temporary/permanent disability. Blue badge holders are not automatically issued with a permit and must submit their request and reason for a permit to the clerk on an individual basis. Anyone with a temporary disablement that limits their mobility can only apply for a permit for three months. Likewise anyone with a blue badge cannot be issued with a permit for a period that exceeds the expiry date of their badge. Permit holders must sign a disclaimer notice issued by the clerk, accepting total responsibility for driving along the footpath even though they have PC permission.

The dropping off and collection of kit bags is not a valid reason for driving to the pavilion along the footpath.

The Meadow Lane gates must be shut after each entry and exit (cars drive through the gate and stop and shut it behind them). The gate must not be left open at any time.

All Meadow Lane gate keyholders will be required to sign up to the usage regulations and will be responsible for ensuring that the gate is opened for authorised users/permit holders only, and then immediately closed. If these rules are not adhered to then the PC will request that the key be returned, and that individual will no longer have use of such key.

Keyholders must take responsibility for their actions and the way their key is used.

Pavilion users car parking

ALL users should park in the Linton village college (LVC) car park.

The LVC car park will be open until 10pm Monday to Friday. At weekends the car park will be left open after 4pm only when LVC advised of usage of their car park due to fixture/match (via fixture lists).

A fixture or events list from each club/society/user group should be emailed to the parish council office lintonpc@btconnect.com and this will be forwarded to Lisa on reception at the village college. LVC must be advised of any changes to the fixture list lintonvc@lvc.org and the PC also advised. Richard Robbins, the caretaker, is the point of contact during weekdays, and the sports centre will be the communication hub at weekends. (Sports centre phone number is 01223 890248). The LVC entrance gates will be left open at weekends when LVC has been advised of usage of the car park via fixture lists.

All groups/clubs must advise the PC of one designated person who will be responsible for the locking of the LVC gates after each event/match that requires out of hours parking at LVC, and return the key to the pavilion.

If the designated person for the club involved wishes the LVC entrance gates to be shut and locked at normal times due to cancellation of event/fixture, then the caretaker must be informed on weekdays before 8pm and the sports centre at weekends before 4pm. If the designated person cannot contact the caretaker or the sports centre for any reason, then it is the responsibility of the designated person to ensure the LVC gates are closed and locked.

A key to the LVC gates will be kept in the pavilion. LVC will give advance notice should parking not be available due to a college event.

The parking area behind the school (accessed via driving past the old reception) must not be used for parking.

Parish council

Vehicle security

REMOVE the temptation. Never leave anything on display in your car, even an old coat on the back seat is an invitation to a potential thief.

Take all your belongings with you when you leave your car. If you are unable to, lock them in your boot at the start of your journey.

The following items are of particular interest to the thief so should never be left in your car: mobile phones, laptops, purses/wallets, credit and debit cards, receipts with card numbers on, cheque books, cash, vehicle registration documents, private mail showing your address.

Locks or other security devices will deter potential thieves; they will go for an easy target:

- Electronic immobilisers are a way to put thieves off. These prevent the car from being started. They must be fitted by main dealers or installers accredited by the Vehicle Security Installation Board. All new cars sold in the UK since October 1988 are fitted with electronic immobilisers.

- Mechanical immobilisers such as steering wheel locks are a good alternative to electronic immobilisers. They are not expensive and are easy to fit.

- Fit locking wheel nuts. Wheels can be a target for thieves. Wheel nuts are not expensive and are easy to fit.

- An alarm can help to keep your car secure but it must be installed properly.

Keep your car keys safe. When you leave the car always remove the ignition key and lock all doors - it only takes a few seconds for a thief to jump into your car and drive away.

Register and protect your property free on www.immobilise.com

If you see anybody hanging round a vehicle or acting suspiciously please report the incident when it is happening, 999 for an emergency and 101 for non-emergencies.

Cambs police safer neighbourhood team

CHIMNEY SWEEP

J. L. WIGHT

Guild of Master Sweeps.

Qualified advice Problems solved.

Certificates issued.

www.camsweep.co.uk

01954 253315

26, Cow Lane, Rampton

Local Ironing Service

Fast, friendly ironing service tailored to suit your needs.

Working overtime? Not enough hours in the day? Can't face that stack of ironing?

Economical hourly rate. Free collection/delivery available.

Call Carolyn on 01223 891762 07961 919374 carolynturner63@yahoo.co.uk

BED AND BREAKFAST

BAKERY COTTAGE WEST WRATTING CAMBRIDGE CB21 5LU also Cottage and Converted Barn to rent for holidays, weekends and short breaks sleeping 6 and 4 people

Tel Carol on 01223 290492 07860 810689

NRS CARPETS



HOME SELECTION FREE MEASURING & ESTIMATING All types of flooring available

Tel: 01223 893634 Mobile: 07885 173113

A & R PLASTERING

All aspects of plastering undertaken: Plasterboarding Rendering No job too small 19 years experience Free estimates

Mobile: 0774 8627920

ClearTax & ACCOUNTING LTD

All your tax and accounting needs, personal and business. Specialist in tax planning Free initial consultation Tax returns from £99+vat Ltd Company Package from £699+vat Local, based in Hadstock

t: 01223 894036 e: janine@cleartax.co.uk www.cleartax.co.uk

LINTON VILLAGE MOTORS (situated in Great Abington opposite Granta Park) www.lintonvillagemotors.co.uk

Tel: 01223 830550

- MOT testing
- All makes of vehicles serviced and repaired
- Tyres at competitive prices
- courtesy car provided
- Polite and friendly staff



Mon-Fri: 8.30am-5.30pm Sat: 8.30am-12.30pm

DRIVES & PATIOS

HOUSE EXTENSIONS

HOME IMPROVEMENTS PAINTING DECORATING

A & T Groundworks Ltd

FRIENDLY SERVICE LARGE & MINI DIGGERS FOR HIRE

Call Ashley on 01799-520298 - Mobile 07803745637

Singing Lessons

Sarah Rosewell BA (Hons) Music

Individual singing lessons available for all ages and abilities Whether towards exams or purely for pleasure * CRB Checked * Based in Linton

For more information contact: Sarah on 01223 894861

Email: sarahrosewell@hotmail.com

KJL Roofing

All roofing repairs, lead-work, renewal of pitched or flat roofs New guttering, repairs/unblocking Free estimates before any work commenced 25 years + Experience

Tel: 01223 892542 Mob: 07958 618440