

All the best
to everyone
and
stay safe

Over 2,350 copies
distributed
free in Linton,
Hildersham,
Hadstock &
Bartlow

THE LINTON NEWS

www.thelintonnews.co.uk, email editor.linton.news@gmail.com

April
2020
Vol. 34 N° 1
Publication date
Monday 6th April

E & E PLUMRIDGE
Design & Print
41 High Street
Linton
01223 891407

Linton and Coronavirus (COVID-19) updates

THE Covid-19 virus has turned the world on its head. Some of us oldies can remember the war years of the forties, Asian flu from 1946 to 1957, the rationing, the miners' strike, foot and mouth disease, the financial crash of 2008. We survived all of these, but this virus is something far worse and has both medical and economic threats.

Sadly for the first time in over 30 years, we are unable to deliver a hard copy of the Linton News as we did not want to put our vulnerable deliverers at risk. However we will be publishing the April issue online at www.thelintonnews.co.uk

So let everyone you know know this and let others who are not online know of items of interest by phone or other safe means. Especially where to get help with shopping etc.

On the brighter side, the heartening thing in Linton is

how people have got together to help us all.

The Parish Council, the Churches and an heroic group of volunteers under Faye Parker have organised both a leaflet drop, telling people how they can get help if isolated, and a local food bank. We must support them—particularly the food bank.

In addition, the Granta Medical Group has emailed the vulnerable with a helpline and telephone number for anything from shopping or a phone call to ease the loneliness - see the adjoining article.

We also need to help our local pubs shops and other businesses to carry on. As I write this, the pubs and restaurants are offering a take out/collection service see another article on this page for details. So make sure you give them your

custom and keep the village going. Afterwards they will certainly need our help if the Linton we love is to survive.

Keep up-to-date with what is happening by looking on the Parish website, and facebook pages. Let people you know who aren't online what the website and facebook pages are saying if you can contact safely, eg by phone.

I suspect we shall need some good cheer in the coming months, so please email me some cheery articles, thoughts and jokes as well as reminiscences of past emergencies and funny tales of how you are coping now.

If you have ideas that we could publish, of how we Lintonites can help local businesses, especially if you are a local business, please send in an article.

Editor

The Parish Council

AS a precautionary measure, to help prevent the spread of COVID-19, Linton Parish Council has decided to close the Parish Council office to all members of the public with immediate effect and until further notice.

Further information on COVID-19, with useful links, can be found by clicking on the link – COVID-19 – alternatively refer to *Hot Topics* on the Linton Parish Council Website) – **updates will be posted when available.**

The parish office will be working from home from Monday 23rd March, we kindly ask for your patience as there may be a slight delay in response times.

The Parish office staff can be contacted via:

Phone : 891001

Email: enquiries@linton-pc.gov.uk

Messenger and Facebook.

Thank you in advance for your understanding with the reasoning behind these temporary measures.

Working together and linking up with other agencies will ensure we get through this challenging time and ensure we use all the resources of our wonderful community to keep people safe.

Kate Wiseman, Parish Clerk

Editor's note see also p5 Councillor's report

Linton Community Help team

IN collaboration with the Parish Council and other key local organisations, we have set up a Linton Community Help team. This is a team of volunteers around the village who will be working to support you during the COVID-19 outbreak.

The team can help with:

- Picking up Prescriptions
- Shopping
- Dog Walking / Pet Services
- Social contact by phone
- Concerns eg feeding yourself / your family (we have set up a food bank)
- Other suitable requests

Where possible, all community activity to help people will be co-ordinated centrally to avoid duplication. This does not mean you can't help your neighbours out – it would be useful to know if there is any kind of locally organised help going on eg if your whole street has set something up so that we can work together and not duplicate.

If you would like help of any kind, please send an e-mail to lintoncommunityhelp@gmail.com

with the subject header: **Help needed**

If you would like to offer help, please send an e-mail to lintoncommunityhelp@gmail.com

With the subject header: **Help offered.**

Wherever possible please contact us via e-mail to enable us to manage requests effectively.

If, and only if, you, do not have access to email,

call us on 01223 901132

Community Warden and ACE's

MELANIE Laing is the Community Warden, who looks after around 25 households in Linton

The ACEs are organising an informal group with the older people who come to their meetings, for contact and support. We will be in contact with them shortly.

Enid Smith, 891069

And elsewhere.....

BARTLOW has a group (Bartlow Village Association) which is co-ordinating our community support.

We maintain a list of our residents and have noted those at risk as defined, those in isolation (with dates) and those who are offering help. We have allocated individual responsibility (a buddy) for the vulnerable residents who live alone or where a couple are both frail.

We have set up a WhatsApp group to match helpers with those needing help. Content consists of a complete range from vital requests to collect medicines or food to trivia. People are meeting each other and helping each other out.

The great thing about a virtual group is that it is dynamic. Someone who is offering help this week might need help next week. We need to remember that not everyone has access to social media but their buddy will have. Duncan Ogilvy, 893644

GRANTA Medical Practices

Coronavirus (Covid-19) update

UNFORTUNATELY the number of people affected by the coronavirus causing Covid-19 is increasing rapidly and this new virus is taking a foothold within our community.

At Granta Medical Practices we have a dedicated Covid emergency team who are meeting daily to discuss how we can continue to provide the best possible care for our patients.

As a practice we are fortunate in having both multiple sites and a large team of people, including those with experience of managing this sort of situation. This gives us options for delivery of care that are not open to many practices during any epidemic.

Up to-date-information:

At a national level the Public Health England website www.gov.uk/government/organisations/public-health-england and NHS UK website www.nhs.uk/conditions/coronavirus-covid-19 provide up-to-date information about the national situation and plans and health advice. At Granta we will be keeping our website www.grantamedicalpractices.co.uk updated regularly to reflect the local situation and our actions at Granta, along with our social media accounts. We may also use SMS messaging to mobile phones to communicate any urgent messages. Please let us know if you have changed your mobile number or have one that you haven't yet told us about.

Prioritisation:

The current evidence is that for the vast majority of the population the Covid-19 virus is a mild illness which can be safely managed at home with rest, paracetamol and fluids just like a normal flu-like illness. However, for those with significant other medical problems and for the elderly it can be more serious.

With this in mind we have postponed all face to face GP appointments and some routine nurse appointments. This is for both our patients' safety and the safety of our staff. Instead we are now offering an enhanced telephone service and also a non-urgent dedicated email address, capcg.covid19.gmp@nhs.net, 8am to 6pm Monday to Friday. We are working hard to make sure that those who are housebound will continue to receive their medications.

As a community we can help each other – both by following the advice given and by helping look after those who may need help within our communities. If you are able to volunteer to help out in your immediate area, please email your details to granta.socialnavigator@nhs.net

Practical advice:

First and foremost is the need to wash your hands on a regular basis – warm water and soap for at least 20 seconds. This alone will help slow down the spread of the virus and help protect you, your family and our community.

Dr James Morrow,
Managing Partner, 16th March 2020

Linton temporary food bank

Do not go hungry

If you need help with food during the Covid -19 outbreak because you really cannot afford to buy food please contact the temporary food bank we have set up via:

lintoncommunityhelp@gmail.com,

If you have no email you can call 01223 901132

Can you donate?

Please bring donations of dry/longlife goods to:
St Mary's Church, Church Lane, Linton, CB21 4JX
9-11am Monday to Friday

Please note:

This service is designed to help those in our community who may struggle financially during this trying time and provide a helping hand to those who need it.

This service is **not** designed to assist with the existing supermarket supply issues – a number of other solutions to this have already been put into place within the village

We are all in this together

WE have taken the decision to still produce an online version of the paper at www.thelintonnews.co.uk

We have also taken the decision to still produce adverts for our local businesses (at no cost) as we will all need to support them in the coming days, as they have supported us over the years.

We would like to say a huge thank you to all our local business owners for the way in which they and their teams are continuing to support customers and the community at this challenging time. So make sure you give them your custom afterwards, particularly the newly opened Waggon and Horses and You Beauty. The situation is very fluid and likely to change at short notice but at the moment :-

The Co-op is offering an early morning opening for elderly and vulnerable residents 8am to 9am Monday to Saturday and 10am to 11am Sunday and we commend the staff for doing a tremendous job in difficult circumstances.

Note change to opening 7am to 8pm

The three pubs remain closed but:-

The Crown Inn is offering a very reasonable take-away and hot meal service with generous discounts for NHS workers, also food boxes. Please see [facebook@CrownInnLinton](https://www.facebook.com/CrownInnLinton) or call 891759

The Dog and Duck is offering pre-ordered food boxes please see their website or facebook [dogandducklinton](https://www.facebook.com/dogandducklinton)

Linton Tandoori is offering a take-out and delivery service on website, tel 890030

Sweet Talk News is offering a delivery service, free for the elderly for those in isolation – see their Facebook page Sweet Talk News Linton – Post Office, 893480

Linton Winners is closed

Boswells Bakery is open as usual but please phone a day ahead to pre-order large amounts to avoid disappointment, 890108

Jigsaw bakery is open 890113

Case solved wines is offering an online service for wine and beer, email Adrian@casesolvedwines.co.uk,

Farm Shop the Old Granary Vegetable boxes for collection jenny@farmshoplinton.com, 07927 529562

Darryly Nantais Gallery open online, see [facebook@DNaintaisGallery](https://www.facebook.com/DNaintaisGallery) or advert for contact details

Linton Kitchen advise you to check their Facebook and Instagram@lintonkitchen for up to date information.

Radwinter Wild Game Company are pleased to offer locally sourced fresh meat products: Refrigerated free delivery to local villages. Card payments accepted.

www.radwinterwildgame.com

Farmers Market first Saturday of the month in the village Hall with good social distancing and limited food stalls

Tom's fruit and vegetables, Back lane Linton, contacts facebook and 07510214046

Clark & Son Wholesale and Catering Butchers – offering meat box deliveries to your door call 01787 319330.

Cambridgeshire Family Chiropractic Centre free care and advice over the phone and are also able to offer Emotional Freedom Technique for anxiety, emotional stress and worry see [facebook@cambfamilychiropractic](https://www.facebook.com/cambfamilychiropractic)

The Pharmacy - you have to wait outside 2 metres apart

The dentist Antwerp House is offering a limited safe service especially for emergency dentistry but routine appointments can be cancelled by phone especially for vulnerable groups.

Granta Medical - see opposite paragraph

Both local gyms Linton Fitness and Linton Sports Centre temporarily closed

Small Gifts closed **Florist** Closed

Chiropodist closed

Home-Lintonshop closed but see website

Tournant's electrical and computer repair closed

You Beauty closed as is **Boyz2men, Chicks, Lizzies, Mops and J&S Hair**

Hadstock

If you want information on what Hadstock are doing go to their new website www.hadstock.org.uk

You can also see what the Church in Hadstock is doing on page 3 of this issue. You can contact the reverend Paula Griffiths, priest at St Botolphs on paula.greatford@btinternet.com

Editor



Where does our food come from?

HAPPY Easter to you all from the staff and children at Linton CE Infant School.

Our topic of *Who's that trip-trapping over my bridge* has finished and when we return after Easter, we move onto our new whole school topic of *How did that get on my plate?* With healthy eating, choice and sustainability, along with budget constraints always a focus at school, it is important to teach the children where their food comes from and how it arrives on their plates. We will look at local produce and how far some foods have to travel to reach us, along with what to eat and how to exercise to keep our bodies healthy. The coming term is quite short but it never ceases to amaze me how much we manage to pack in.

Thank you to our PTA and those of you who supported our school Quiz & Supper evening. A fantastic fun evening, raising some much-needed funds for the school. Look out for details of our next event; a Wine Tasting evening. The school council has also been busy organising a school disco.

The summer term always sees eyes turning to September. We invite the children due to start with us in for stories and play, to help with the transition from pre-school to school. We will also see our year 2 pupils visit Linton Heights Junior School as they start to prepare for the next stage of their education. Time marches on.

Kelly Harris, Headteacher



linton grant playgroup

Pre-school and toddler group
Linton, Cambridgeshire

AFTER a successful open morning, we look forward to welcoming our new families after the Easter break.

Our garden renovations have been well underway, a massive thanks to the students and staff from uniformed services at CRC for all of their hard work. Our mud kitchen area has been redeveloped along with a water wall, bug hotel, raised garden and sensory garden. Our shed, playhouse, climbing frame and fences have all been re-painted as well as having stepping stones laid, giving a whole new lease of life to our outdoor learning area.

We have celebrated World Book Day with staff and children dressing up as book characters, having a story experience with Dawn in the Linton Village College library, followed by the children looking at the book cover displays on various doors around LVC. If you are interested in viewing our setting please give us a call on 07806 744864.

Linton Granta Playgroup team

Family Centre events

FOLLOWING the most recent Government announcements, we have taken the difficult decision to cancel all of our groups from centres and outreach venues.

We have taken this step to protect you and your families, our staff teams and to prevent the spread of infection. For now, our doors will remain open for pre-arranged appointments and individual callers.

We recognise how important it is that families and community members can continue to access information and vital social support during this time. Our teams are still available to support in a variety of ways; we will use social media to provide information updates and welcome you to contact us on: 01954 284672

For families receiving one-to-one support our staff will be in touch to discuss the help you may need.

Please do not hesitate to contact us if you need our support,
Sally Stephenson
Child and Family Centre Manager

kalma
Reiki & Crystal Healing

Reiki & Crystal Healing including children and animals (Linton - You Beauty Cambridge)

Community Reiki Healing Clinic (Linton Village Hall)

Relaxation Classes (Linton, Sawston, Stapleford, Arthur Rank)

Faye@KalmaReiki.co.uk
07815 608897
@Kalma_Reiki
f@KalmaReiki

KJL Roofing

All roofing repairs, lead-work, renewal of pitched or flat roofs

New guttering, repairs/unblocking
Free estimates before any work commenced
25 years + Experience

Tel: 01223 892542
Mob: 07958 618440

ClearTax
& ACCOUNTING LTD

Quality, friendly accounting services and taxation advice.

Sole trader and small company specialist.

Free initial consultation

Unit 5, Lintech Court, The Grip Industrial Estate, Linton.

t: 01223 772326
e: janine@cleartax.co.uk
www.cleartax.co.uk

Singing Lessons
Sarah Rosewell
BA (Hons) Music

Individual singing lessons available for all ages and abilities

Whether towards exams or purely for pleasure

* CRB Checked
* Based in Linton

For more information contact:
Sarah on 01223 894861

Email: sarahrosewell@hotmail.com

Covid-19 and schools

ON Monday 23rd March all schools, nurseries and colleges were closed to pupils. Then later in the month they will be opened to pupils whose parents are key workers and to those pupils as assessed by the local authority. A momentous event.

Editor



More sporting success

SINCE the arrival of our latest sports coach, Mr Lewis Russell, sporting success at Linton Heights goes from strength to strength. Please see below two notable successes over the last month.

High 5 Netball

On Thursday 27th February, Mr Russell and Miss Webb took the Linton A and B netball teams to the second round of the High 5 netball tournament at Linton Village College. The children showed outstanding attitude, commitment and team work throughout and played some fantastic netball. The A team finished 2nd and the B team 3rd in their groups. A special thanks to Mrs Dower, Mr Hancock and Mrs Threlfall for helping with transport and to all of the parents who came to support us.

Y5/6 Quick Sticks Hockey

On Wednesday 4th March, Mr Russell took the hockey teams to the annual Year 5 and 6 Quicksticks Hockey competition, hosted at Comberton Village College. The three teams had a few practice sessions before the competition day but for many this was their first time competing in hockey matches. Both the B and C teams finished joint 11th on the day and their courage and willingness to give hockey a go should be applauded. The A team played fantastically, ending up winning all of their five matches without conceding one goal in the process, an amazing achievement. This brilliant performance resulted in the A team finishing in joint first place and qualifying for the Hockey County Finals in May. All 18 children should be proud of their performances, attitude and teamwork and how they represented Linton Heights.

Thank you to Wendy Hine, Sarah Smith, Rebecca Rix and Dean Hancock who assisted with transport and came along to support.

James Puxley, Headteacher



Granta School explorers

ON World Book Day teachers and students came dressed as their favourite characters. Our theme was Explorers and everyone embraced this with a variety of costumes, including pirates, animals and even explorers themselves. We had a visit from *Animal Experience* with pupils being able to get up close with rats, snakes and spiders. *The Blues and Roots Ensemble* and *Jessie's Fund* both provided a great sensory experience for all of our students, and we hope to see them again next year.

Our kitchen provided everyone with a pirate themed lunch: a watermelon pirate ship and a fruit anchor were definitely the stars of the show. Alongside this we also hosted Creativity week: we had themed rooms for our children to explore, the jungle and the arctic, mask making and fossil finding in our forest school. Thank you to all of our staff who make these experiences possible for our pupils and to our parents and carers who help children embrace the spirit of the week.

Dates for the diary: Half term, 25th-29th May

Covid-19 and Granta school

On Monday 23rd March we closed to pupils. Then later in the month opened to pupils whose parents are key workers and to those pupils as assessed by the local authority.

Should you need to contact us please use our usual channels of communication, telephone 896890, or e-mail:

office@granta.cambs.sch.uk.

Alternatively you can also call our sick phone on:

07798 603583 or e-mail:

welfareandsafeguarding@granta.cambs.sch.uk

For all updates and communication regarding COVID-19, please see information under our Newsletter tab.

Emma Jennings, Communication Officer

The Linton Laundry

Shirt pressing
Ironing
Laundry

Eco friendly detergents
Wet Cleaning
Door to door service

Call us on 07894 197805
info@lintonlaundry.co.uk
lintonlaundry.co.uk

Cathy Craske
CREATIVE

Working with businesses of all sizes, to launch or improve your brand.

LOGOS • BRANDING
PRINT DESIGN • WEB
SOCIAL MEDIA CONTENT

cathycraske@gmail.com
07818 424778

cathycraskecreative.co.uk
@cathycraskecreative



Chestnuts Playgroup

AT Chestnuts, we have been exploring the outdoor environment now the weather seems to be less wet.

We have been searching for bugs and using books to identify the creatures we have discovered in our garden area. In our woodland area, we have used lots of different containers and natural materials that we found, to make potions. This has got the children talking about all the different potions they can make including ones for invisibility.

This year's World Book Day was celebrated with all the children dressing up all week. This led to us having a week of story inspired activities and finishing off the week with a parent coming to read the children a story in Russian which the children thoroughly enjoyed. During World Book Day we had a cake and book sale to raise funds for the playgroup. Many thanks to those who donated cakes and books and a big thanks to those who purchased them.

Chestnut Admin team

Summer at

Linton Village College

New tutors needed

LINTON Village College Adult education department is looking for new tutors to join our team.

If you have a talent or skill you would like to share and teach to others, please get in touch via email at adult.education@lvc.org or telephone 891223 ext 303 or 317

Summer term

Why not come and try something new and make new friends? Our summer programme starts week commencing 27th April* - if we can open after the coronavirus closures.

We still have spaces on the following classes for the summer term:-

Watercolours, Applique quilts/wall hanging, Upholstery, Pen and ink drawing, Experimenting with mosaics, Singing for fun, Pottery, Beginners sketchbook, Art and drawing, Flower arranging, Aromatherapy

ESOL (English for speakers of other languages) and Woodwork

For more information visit our website

www.lintonvillagecollegeadultlearning.co.uk or contact us by telephone or email.

Margaret Kiddy,

Adult Education and Lettings Manager

*Editor's note - This is subject to being able to open after the coronavirus outbreak closures

Sawston Village College Adult Learning

AT Sawston Adult Learning we are looking forward to the start of our summer programme.

The summer term begins week commencing 20th April* and we have some fabulous courses on offer.

For those wanting to improve their health and fitness and wellbeing we have Reiki Relaxation & Stress Management, Tai Chi, Pilates, Fitness Yoga and Bollywood & Classical Indian dance. For those tired of cooking the same old meals and wanting some inspiration, why not come along to our Creative Curry, Cooking with Unusual Cuts of Meat, or Tarts and Pies for Dessert courses. For those wanting to try arts and crafts we can offer Flowers for Fun, Exploring Drawing & Painting, Fused Glass Jewellery, Dressmaking and Creative Writing - Beginners. These and many more courses are all available to view and book on our website www.sawstonadulted.org or if you prefer, please contact us on 712424, community@sawstonvc.org for more information.

Mrs Clare Walpole, Adult Learning Administrator

*Editor's note - This is subject to being able to open after the coronavirus outbreak closures.

Available Quality Blinds

capriBlinds

ALL TYPES OF BLINDS
SUPPLIED AND FITTED
FREE QUOTATIONS
FREE HOME VISIT

01223-894020

or email colin@capriblinds.co.uk
ALL BLINDS ARE MADE IN ENGLAND
- FAST LOCAL SERVICE

Visit capriblinds.co.uk

GLENWOOD
BOLTS & SCREWS LTD

www.glenwoodbolts.co.uk

SUPPLIERS OF QUALITY
FASTENERS, FIXINGS &
SILVERLINE TOOLS

Unit 2 Lintech Court
The Grip Industrial Estate, Linton
Cambridge, CB21 4XN
Tel: 01223 892095 / 893931
Fax: 01223 894122

NRS CARPETS

HOME SELECTION
FREE MEASURING &
ESTIMATING

All types of flooring available

Tel: 01223 893634
Mobile: 07885 173113

Readers write...

Post and email addresses and deadline for letters are on this page. All letters for publication must have a full name, address or phone number to enable us to check authenticity. Letters may be edited. Opinions are not necessarily those of the Linton News.

Anonymous letters will NOT be published but names and addresses may be withheld if requested.

OUR THANKS

Guides' Jumble Sale

A HUGE thank you to everyone who helped by volunteering, supplying or buying for the Guides' jumble sale on 7th March. It was our best sale ever and raised £650 clear profit, to be split between the two Linton Guide units.

We really do appreciate the wonderful support from Linton and local folk, both in turning out unwanted goods and attending the afternoon action.

Thank you again.

Kate France, 891602

News from St Mary's, Linton and St Mary's, Bartlow

CURRENTLY, the whole Church of England is suspending public worship and has to close buildings for every other purpose. We sincerely regret this, since so many people find it helpful to visit a church at times of stress and grief. We are particularly sorry that you cannot light a candle at St Mary's Linton at the time of bereavement. Although it may seem a poor alternative, we do invite you, if you are in this distressing situation, to *Show you care when you can't be there* by lighting a virtual candle at

<https://www.churchofengland.org/life-events/funerals/light-candle> We hope to offer several occasions after the crisis is over for the bereaved to join in bringing their memories and prayers together in church.

We are sorry you were not able to pick up a Palm Cross from the church. After we advertised this possibility, official advice said that we should not distribute them during the emergency. However, we have the crosses in stock, and hope to be able to offer them as a sign of God's love when the lockdown is over.

Meanwhile, we remain active in these ways, and we invite you to join us:

- **Virtual worship:** a service posted on our website and in paper copies which can be delivered to your home. It will be refreshed weekly and there will also be special services posted for Maundy Thursday and Good Friday. Audio-visual media may shortly be used to share in these services online. To request a regular paper copy, please contact the church administrator or the rector.
- **Church members are joining the coordinated efforts in the villages to support those isolated at home.**
- Especially, we offer anyone who might be lonely and anxious the chance of a **regular friendly phone call.** Please contact the rector or church administrator with details of the person concerned (with their permission).
- **Food for the emergency village food bank can be brought to the church porch from Monday to Friday between 9 am and 11am.**

www.stmaryslinton.org.uk

Rector: Maggie Guite, 890273

Church Administrator: admin@stmaryslinton.org.uk

theWI Women's Institute and Coronavirus

Cambridge WI Federation Office
We have been advised by the National Federation of Women's Institutes not to hold meetings at the moment and the office of the Cambridge Federation (CFWI) will close for the foreseeable future. The secretaries will work from home and can be e-mailed on office@cfwi.co.uk as usual.

All forthcoming events have been postponed and refunds will be given. The magazine Cambridge News will continue to be printed at the moment and we will deliver it to members. It is also available on My WI and we will send out a link.

There will be shortage of content for the News—so if you have anything to share please send to Helen at cfwi.co.uk

All the best to everyone. Keep safe and well.

Sue Smales smales@gmail.com

Linton Women's Institute

UNTIL further notice there will be no meetings of Linton WI due to the Coronavirus.

At our March meeting, Dr Bill Block gave an excellent talk, drawing on his 18 years of experience as a beekeeper. We shall report on this in next month's issue.

Sally Proberts 891021

Sports Centre and Coronavirus



IT is with deep regret that we have taken the decision to close the Centre from 10pm on 18th March until further notice.

We have been in constant contact with our education trust and have made this decision in agreement with them and taking into account the Government's guidance on non-essential social contact and protecting at-risk groups.

We will arrange refunds or credit notes for bookings and memberships in due course. I will contact each booking and membership to discuss what will happen going forward.

Our number one priority is the health of our customers and whilst we are all disappointed that we have had to close we realise this is the best thing to do at this time.

Over the past four and a half months the new management team has been working tirelessly to improve the Sports Centre and the service we provide. We have seen a rise in usage and many of you have made glowing comments about the service and your satisfaction with our ever-improving facilities.

We will re-open however, as I'm sure you can appreciate, we cannot give you an exact date when this will happen. Please keep an eye on our Website www.lintonsc.schoolhire.co.uk and our Facebook and Instagram pages.

If you have any queries or questions please contact me by email see below.

Thank you for your amazing support and we will continue to update you as and when necessary.

Samuel Pollard, Manager, Samuel.Pollard@LVC.org

COOPER BARNES AUTOMOTIVE



Replacement and winter tyres, call for prices.

Parking Sensors Fitted

Winter vehicle checks

Four Wheel Alignment

Vehicle Accident Repair Specialist, Modern or Classics

British Standard 10125 accredited

Just give us a call or pop in today.

2, The Grip, Linton Ind Est, Hadstock Rd, Linton CB21 4NN

T: 01223 880603, E: repairs@cooperbarnes.co.uk, W: www.cooperbarnes.co.uk

YOU BEAUTY CAMBRIDGE

YOUR LOCAL BEAUTY SALON

Check us out at
5 Balsham Road, Linton
Cambridge CB21 4LD

youbeautycambridge.co.uk
01223 668400



• Qualified Body Control Pilates Teacher.

• Classes and 1-1 sessions

• Specialising in older and less able clients.

Contact Rachel 07905105081
Rachel@zigzagpilates.co.uk
www.zigzagpilates.co.uk

THE LINTON NEWS Next Publication 4th May 2020
DEADLINES for ADVERTS Monday 13th April
NEWS ITEMS Wednesday 15th April

ITEMS FOR ADVERTISING MANAGER

Requests for adverts can be sent to:
Judith Rouse Email: adverts.linton.news@gmail.com

ITEMS FOR THE EDITOR

Can be put in the Linton News Box in the Post Office
Editor: Fran Armes, 891517
Email: editor.linton.news@gmail.com

For distribution queries contact:

Delivery manager, Jenny and Chris Murison, 660408, or 07905 384741 Email: delivery.linton.news@gmail.com

LINTON DIARY

All events cancelled except Farmers' Market and Bin Collection

Farmer's Market

first Saturday every month, 9am Village Hall still going ahead

Bin Collection Dates

Linton refuse collection: Wednesday 15th April and Monday 27th April

Linton blue bin collections: Mondays 6th and 21st April
Green bin collections were suspended temporarily from Monday 23rd March due to the Coronavirus. South Cambs District Council hopes to continue them from May but will keep us updated.

The service to deliver replacement or additional green bins is also suspended.

The bulky waste collection service and green bin collections have been suspended until further notice. All Household Recycling Centres and recycling points are also closed until further notice.

For more information please The bulky waste collection service and green bin collections have been suspended until further notice. All Household Recycling Centres and recycling points are also closed until further notice. For more information please go to South Cambridgeshire District website.

Black bin waste handling if you are suffering from Covid-19

The Greater Cambridge Shared Waste Service has published advice on handling waste if your household is displaying symptoms of Coronavirus.

If you're experiencing the main symptoms - a new, continuous cough and/or a high temperature - please be very careful when disposing of your personal waste (including used tissues and disposable cleaning cloths/wipes) at home. The advice for disposal of this waste is as follows:

It should be put in a plastic rubbish bag and tied when full
The plastic bag should then be placed in a second bin bag and tied

It should be kept separate from other waste in suitable secure place on your property for 72 hours before being placed in the black bin as normal

The principle behind this method is that after 72 hours outside the body, the virus is no longer viable. This approach will help keep bin collection crews as safe as possible.

St Botolph's Church

LIKE all churches, we sadly have to keep our doors shut while the current COVID-19 restrictions are in place, but with modern technology St Botolph's, and the other churches in the Saffron Walden and Villages Team Ministry, are keeping worship alive.

Each week we are producing a short service sheet and a notice sheet with Bible readings. These are available by email on request and on the Church at Home page on the website of St Mary's Saffron Walden (www.stmaryssaffronwalden.org). This can be used:

- to use privately at home, or with your family
- to follow the 30-minute service recorded each week, accessible via the website above
- as a framework for joining live in the Eucharist celebrated from my home at 9.30 am on Sunday mornings (the usual Hadstock service time), via the Zoom package which is easy to upload onto your computer or laptop.

Please let me know by email if you would like to be added to the list to receive these sheets and the Zoom link for the service. With my prayers and best wishes to everyone in this difficult time

The Reverend Paula Griffiths Priest at St Botolph's Hadstock Associate Priest in the Saffron Walden and Villages Team Ministry paula.greatford@btinternet.com

www.AllstarCleaning Ltd .me.uk

Your Local, Professional, Carpet Cleaner Dean

11 years experience

Package to suit every level: Basic, Pet Treatment or Carpet Protector

£15 off for repeat customers

Free stain spotter for all customers

Contact Dean on 01223 654652

or info@allstarcleaning.me.uk to make an appointment.

Allstar Cleaning, 10 Coles Lane, Linton, CB21 4JS

14 Hillway, Linton, CB21 4JE.

The Crown Inn

KEEP CALM AND CARRY ON EATING LUNCH

We will be taking takeaway orders over the phone from 11-2 for collection between 12-2 Monday through to Sunday.

DINNER

We will be taking orders over the phone from 5-8 for collection between 6-8 Monday through to Saturday (not Sunday evenings)

Please call us on 01223891759 to order!

We are only taking card payments

We have a safe collection process that will be explained over the phone by a member of staff.

Our food boxes follow the same process so give us a call to enquire.

www.crownatinton.co.uk Tel 01223 891759

SHINE

TRADITIONAL WINDOW CLEANING

EXTERIOR AND INTERIOR WINDOWS, GUTTERS, FASCIAS, CONSERVATORIES AND PATIO CLEANING

TEL. 01223 893529 Mob. 07703 518882

FREE QUOTATIONS

FULL PUBLIC LIABILITY INSURANCE

SHINWINDOWCLEANINGSERVICES@GMAIL.COM

BODY DESIGN PILATES

Su Matthews
REPS LEVEL 4 PILATES TEACHER & BACK4GOOD PRACTITIONER

07986 692 334

Pilates Classes

Linton & Horseheath

su@bodydesignpilates.co.uk
bodydesignpilates.co.uk

Outstanding success for Linton childminder



Julie and Jo's Childcare celebrate their Outstanding ranking
Picture supplied by Jo

CHILDREN and staff at Julie & Jo's Childcare in Linton were celebrating after being awarded the highest ranking of *Outstanding* by Ofsted. They achieved this in every area, making them one of the best childminders in the county.

The inspector said "Children are nurtured and thrive in the excellent care of the childminder. They benefit from a highly stimulating environment and the wealth of well-planned learning opportunities provided for them."

There was also high praise for the staff. "The childminder and her assistants demonstrate an abundance of enthusiasm for their roles, ensuring children have every opportunity to develop a thirst for knowledge and receive the support they need to succeed."

Julie said: "We are delighted and proud to receive the *Outstanding* grading as we are one of only a minority of childminders who have achieved this. Although we have worked exceptionally hard to accomplish this I consider myself extremely fortunate to be able to do a job that I enjoy, as well as having a positive impact on children's future development."

Julie & Jo's provides childcare for children from six months to 11 years old and has been running in Linton for over 20 years. It is managed by Julie Dixon. Julie and her sister Jo and daughter Abi provide childcare from 7.30am until 6pm throughout the week and Julie's husband Tony (a fully qualified PE teacher) runs multi-skills sessions during the day for pre-school children and an after-school sports club for primary school children. In addition to the after-school sessions, Julie and Jo also offer a breakfast club where children can start the day with a healthy and nutritious breakfast.

The full Ofsted report can be accessed online via: <http://bit.ly/JulieDixonOfsted>

For more information on Julie & Jo's Childcare call 891051 or email: julie_and_jo_childcare@yahoo.co.uk

What's afoot at Granta Grapevine?



My what a big foot you've got Wendy
Picture supplied by Mike

GRANTA Grapevine, Linton's talking newspaper, was 30 years old last month.

No, we're not pulling your leg, it was started in March 1990, three years after the Linton News was first published. A special edition of the recording featuring part of the first edition was distributed to our listeners.

Some of the group are pictured at a recent committee meeting where our secretary, Wendy Foster, was recovering after an operation on her foot.

The talking newspaper provides a spoken version of the Linton News and an audio magazine every month for those who are visually impaired or have difficulty reading the text for any reason.

Contact me if you know anyone who might like a copy of the recording on USB memory stick, for which players are available from us.

We are in need of more volunteers to keep us on our toes, so if you think you can help give me a call on 893619 for further information or see our website grantagrapevine.org.uk

Mike Crofts

The garden club

DEAR ALL

I hope you are all keeping well.

Based on the latest guidance issued nationally to slow the spread of the Covid-19 virus, the committee has made the following decisions.

We have sadly decided to cancel the 14th April and 12th May club meetings. All being well, we hope to reschedule them in the 2020 - 2021 season.

The Plant Sale scheduled for 16th of May is also cancelled.

The committee is considering other ways of selling and distributing plants already in the pipeline.

No plans have been finalised for the June evening trip, so as things stand it is also unlikely to take place at that time.

With regards to the Annual Show, we are monitoring the situation and will decide at a later date if and how it could be held.

We find ourselves in unprecedented and troubling times so look after yourselves and have a care for those who may need assistance.

Best wishes and keep gardening.

Jim Forrest, Secretary, Linton Gardening Club

The answer lies in the soil

OUR speaker for the Garden Club's March meeting was Karen Kenny, talking about the importance of the soil and how to care for it. Karen gave a very informative and amusing talk with questions to members for which the answer was *the soil* each time.

Karen used line drawings of a tree to demonstrate how earthworms eat and breakdown the dead fallen leaves and pull them down into the earth. Small mammals also help by burrowing and breaking down the soil. Healthy and productive soil needs water, air, sun and food ie humus. Good soil helps us to produce fresh fruit, vegetables and flowers.

Anita Daws, 892113
lgssecretary@yahoo.co.uk

ACE Coach Trip Postponed

THE ACE coach trip due to take place on 23rd April is postponed. It will be re-scheduled after the Covid-19 epidemic.
Enid Smith



New sponsors for the Cricket Club

MULTI-MILLION selling indie-pop band, Scouting For Girls, will be one of LVCC's new sponsors for the 2020 season. Throughout Scouting For Girls' immensely successful career they've sold over 1.5 million albums, two million singles and had four Brit Award nominations. The Scouting For Girls partnership came about as the band's manager is a member of Linton Village CC. Amongst other sponsors are Huttie.com and Gran Luchito and our own Dog and Duck.

The club will be well kitted out for 2020 and be one of the first clubs to wear *New Balance* kit, recently launched and based on the kit worn by the England cricket team.

This year the club will be running an All Stars training camp through the summer. All Stars Cricket is a national programme that is designed to inspire five-to-eight-year-old boys and girls to take up cricket and provide a great first experience of the game. Putting fun right at the centre of this experience, All Stars Cricket aims to instil children with a lifelong love of our sport. Linton Village CC have a good number of young players in the club and hopefully this programme, along with the renewed visibility via brand partnerships and the LVCC social media presence, will help to bring new people to the club and to the game.

Outdoor Nets will start every Thursday from 2nd April at Linton Village Collage, all players old and new are welcome. If you wish to join the club as a player or member please contact via Linton.village.cc@gmail.com

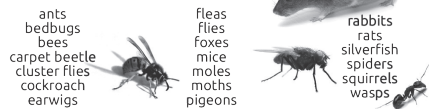
Or Facebook: [@lintonvillagecricketclub](https://www.facebook.com/lintonvillagecricketclub)
For interest in All Stars please contact Conner Campbell: 07305 878202

All three Linton Saturday sides start on Saturday 2nd May.

All indoor nets have been cancelled due to Covid-19 and the Club will use Social Media to further update on Covid-19 related issues.

Guy Ennew

Pest Right Pest Control



Based in Linton, call Mark or Carolyn on 01223 897982 or 0845 4682412 or 0777 620 4483 for a discreet professional insured service

RESIDENTIAL • COMMERCIAL • AGRICULTURAL • INDUSTRIAL

Linton Library

ALL Cambridgeshire Libraries are closed to the public until further notice.

Please don't worry about accumulating fines on books you took out before the closure. Books currently out on loan are being renewed automatically, and charges have been suspended since mid-March.

Unfortunately it is not possible at the moment to borrow physical books from the library. However, if you are online you can download free electronic books, audiobooks, magazines and newspapers onto your computer, tablet or smartphone through the library service. Please visit <https://www.cambridgeshire.gov.uk/residents/libraries-leisure-culture/libraries/library-online> to find out more.

If you are not already a library member, you can join online (please use the link above). A membership number will be emailed to you.

Cambridgeshire Libraries are also working hard to provide other online activities to keep people informed, engaged and entertained at this difficult time.

Best wishes to you all. We hope to see you again in the library before too long. Please take care and stay well.

Anna McMahon and Lindsay Healy
Linton Community Library Assistants

Girlguiding Linton District

UNTIL a short while ago it was a fabulous start to the New Year. We had two new leaders come forward to join us who will help at Linton Brownies. One of our young leaders has created Facebook, Twitter and Instagram pages for us. You can see what we have been up to by looking at Linton District@. The Guides had an amazing end to the year and went on an Anglia Region camp Supanova, with 600 other Guides from Anglia Region and also a trip to the panto. They also ran their annual jumble sale in March enabling people to hunt for a bargain or two and enjoy a cake and a cup of tea.

Our Brownies had Christmas parties and Christmas fayres running stalls and handling the money as well as eating cake. Our Guides ran their annual jumble sale. They have also travelled the globe in one evening visiting Japan, America, Russia and Ireland and made penguins out of icing and decorated beautiful stones.

Our Rainbows made bee houses and bird boxes to give to the station adopter at Dullingham Station who is going to put them up there and other stations in the area.

All our girls from Rainbows to Rangers attended a county STEM* day in February as our district thinking day activity and learnt much so our county is going to do the same again next year.

Now the coronavirus has postponed arrangements including sleeping under the planes at Duxford for a night but one of our leaders is posting activities online for all our girls to entertain them and give them Guiding without meeting. We have also had our annual awards to celebrate everyone's achievements in Guiding. If you would like to find out more or get involved in any way contact Louisa at lintondistrict@gmail.com

*STEM science, technology, engineering and mathematics
Louisa Powell,
District Commissioner for Linton District

PLUMBLINE

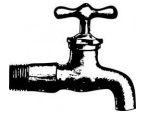
PLUMBING AND HEATING ENGINEER
PROFESSIONAL DOMESTIC PLUMBING SERVICE

Including Property Maintenance
Painting: Tiling: Plastering: Carpentry

Call John on
01223 893903

Supcik@talktalk.net
Fully Qualified and Insured

Friendly and Reliable Service No Job Too Small



A TOUCH OF NAILS
GELISH MANICURES & PEDICURES
PERFORMS LIKE A GEL APPLIES
LIKE A POLISH
Call Michelle on
07866 017 801
supcik@talktalk.net
HORSEHEATH

BED & BREAKFAST
Mrs Monica Clarkson
4 Harefield Rise, Linton
Tel: 01223 892988
Quiet modern bungalow
Families welcome
No Smoking

Linton Complementary Health Centre

2B Bartlow Road, Linton, CB21 4LY

- Acupuncture
- Shiatsu
- Massage
- Counselling

Telephone: 01223 891145
Email: enquiries@lintonhealth.co.uk

TIM PHILLIPS & Co. Accountants

Established 1991

Independent, specialist service for:
**Small Business • Self Assessment
Personal Taxation**

Free initial consultation - no obligation
EASY, FREE PARKING

Copley Hill Business Park, Cambridge Rd., Babraham
Off A1307 between Wandlebury and Babraham

Tel: 01223 830044. www.tpaccounts.co.uk



COUNTRY MATTERS
Text by Oriel O'Loughlin and illustrated by Maureen Williams



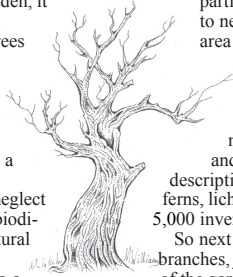
Trees for life

THE Victorians are praised and pilloried in equal measure but we can apparently blame them for our incessant need to tidy up our countryside and gardens. The book *Wilding*, by Isabella Tree, from the Knepp estate in Sussex is being passed round to anyone remotely interested in nature and, together with what to do with an old favourite but dead Bramley in our garden, it seemed time to rethink the word "dead".

When you think how long our fantastic oak trees take to grow, they shouldn't just be the victim of a chainsaw at the first sign of trouble. They are beautiful shapes – next time you drive along you might take a closer look at the sculptured figures of oaks and others. In parklands they stand proud, ideally surrounded by fallen branches like a matriarch and her grandchildren.

A dying tree is not a beacon of uselessness and neglect but part of nature's recycling process, stimulating biodiversity. A dead branch on the ground is also a natural fertiliser for the tree itself.

I have learned a new word – a snag. A log is a dead tree or branch on the ground, whereas a snag is standing dead tree. A hard snag has sound sapwood and decayed heartwood, and a soft snag is a tree in an advanced state of decay with the bark falling away. In forests, snags make up



approximately 10% of all trees and the largest tree can take several decades to decompose completely. Until then, it is a time-release compost stick.

A snag undergoes a series of changes from the time it dies until its final collapse. Each new stage in the decaying process has particular value to wildlife species. It provides a place to nest, rest, eat and grow. Birds use snags to view the area and watch for predators, prey, rivals and potential mates. Branches make excellent song and display perches. 40% of all woodland wildlife depends on dead trees and one third of woodland birds nest in them. Woodpeckers drum on them to mark their territory. Pollinators lay eggs in them, and they harbour insects, larvae, and spiders of all descriptions. They are a welcome environment for moss, ferns, lichens and even tree seedlings. In this country around 5,000 invertebrate and fungal species rely on dead wood.

So next time you're tempted to clear away and burn dead branches, just pause. You might make a log pile in the corner of the garden, in direct contact with the ground, a sort of informal bug hotel. You can add to it as logs decay and spread leaf litter to encourage toads and hedgehogs. If you have a dying tree, just leave it standing, as long as it is safe, a monument not just to its past, but to its future.

Camsight VIP's (Visually Impaired People) The Cambridgeshire charity for local people with low vision and blindness

OUR monthly meetings at Chalklands have been cancelled until further notice, owing to the risk of the coronavirus. We shall inform readers when our meetings will be resumed.

Our cancelled March meeting was to have included a talk by a representative from Cambridge Water.

We are contacting our members on a regular basis, especially the elderly who live alone without families or other support nearby, to try to ensure that their day to day needs are being met.

If you, or anyone you know would like any further help or information, please contact us on the number below.
Jean Mannion, 893595

2523 (LINTON) SQN AIR TRAINING CORPS

WE are now closed due to Covid-19.

We continued our strong start to the year by getting three of our newly qualified cadets airborne within the first few days of achieving their first class cadet classification. A few comments from our first time flyer cadets:

Cadet Vellacott: "Flying was the most exhilarating experience I have ever had. Only when you have completed a flight for yourself can you truly appreciate the wonder of aviation."

Cadet Spall: "I was able to go flying in a Grob Tutor two-seater aircraft. I went to RAF Cranwell and actually FLEW the plane! At first I was nervous but after doing it I am eager to go again."

Cadet Sainsbury: "It was amazing! The weather was fantastic and I got a chance to fly the plane. The instructor did some aerobatics with me – loop the loop, barrel rolls and more."

Continuing with the aviation theme, Linton fulfilled six part task trainer allocations, where ground school, including principles of flight training, along with practical glider simulations, resulted in various blue and bronze wings awards.

Presentation evening was a success and it always amazes me to see how much the squadron achieves in 12 months. As Training Officer it is my favourite event of the year. Every cadet on squadron was awarded a new badge, qualification, promotion or award.

The squadron moves from strength to strength with the appointment of two new Cadet Forces Commissions. Debbie Keenan and myself successfully completed uniformed staff training and assessments, resulting in being appointed as Acting Pilot Officer (RAFAC).

We are always welcoming new cadets to the squadron, so if you are aged 12 and in year 8, or older, please get in touch about joining with the details below.

Bradley Wright, Acting Pilot Officer (RAFAC)
Training Officer training.2523@aircadets.org
07943 873272

MALLYON & DONALDSON Linton

Specialising in both Modern and Traditional building methods.

Tel: 01223 891267
Mob: 07941 220868

All contracts finished to a high standard.
Reliable service. Local references available.

Carpentry, Plumbing, Tiling
Door/Window Replacement
Kitchen/Bathroom Refitting

Fencing & Decking
Painting/Decorating
Flat Pack assembly

Property Maintenance
Steve Jackson
stevejacksonltd@hotmail.co.uk

Extensions and Conversions
Linton Based

Steve Jackson
Office 01223 893896
Mobile 07963 854653

**Cambridgeshire Family
Chiropractic Centre**

Bespoke massage and chiropractic care for aches and pains
Specific techniques for pregnancy and children
15 years' experience
Call 07870568548
www.cambridgefamilychiro.co.uk

LINTON VILLAGE MOTORS
(situated in Great Abington opposite Granta Park)
www.lintonvillagemotors.co.uk

Tel: 01223 830550

- MOT testing
- All makes of vehicles serviced and repaired
- Tyres at competitive prices
- courtesy car provided
- Polite and friendly staff

Mon-Fri: 8.30am-5.30pm Sat: 8.30am-12.30pm

**McKenzie & Haywards
Garage LTD**

MOT by appointment while you wait
Servicing, Collection & Delivery Service

Unit 3 & 4, Lintech Court
The Grip Industrial Estate
Linton, Cambs
CB21 4XN

Tel : 01223 894140
Fax : 01223 890035
mhgarage@btconnect.com

Councillors' report April 2020

WE hope that you and your families are all keeping safe at this difficult time. There is only one subject and that is how we are all working to prevent the spread of Covid-19. We know about all the good work going on in the villages to support the vulnerable and elderly. Well done everyone, keep up the good work.

South Cambs District Council

You will have been bombarded with advice from all quarters, we certainly have. Do please work with the SCDC Patch Manager, Sarah Grove, who is coordinating the effort in our area. Her contact is: duty.communities@scambs.gov.uk and, of course, we are available to help where ever we can. If emailing Sarah, please put *Patch 1* into the subject line, so that it gets to the right person faster. Information is also available at – www.scambs.gov.uk/coronavirus/

Cambridgeshire County Council

The County Council has a *hub* online where information regarding volunteers can be accessed – hwww.cambridgeshire.gov.uk/residents/coronavirus/covid-19-coordination-hub-your-community-needs-you – also a simple online search should find you the correct webpage. This is a hub for links to volunteer support as well as help/advice for businesses.

A few practical points about carrying on the work of your parish councils:

Remote Working and Voting

At the time of writing, 1st April, the situation was that the act that went through parliament, gave the government the power to change the rules to allow meeting to be held remotely and to have the ability to vote without having to have a quorum of people physically in a room. The government has not yet actioned these powers, so the situation has not changed. We are being told that new rules will come into force any day now. We will just have to wait until that happens.

At the District Council we are unable to hold meetings or make decisions until these new rules come in.

Planning

As of now the District Council cannot hold Planning Committee meetings or process requests from Parishes or Members asking for applications to go to committee. There is a growing backlog of applications that will have to wait until we have the legal framework in place to deal with them.

However, the planning process is still working, Planning Officers are taking decisions where the delegation rules allow. Which are most applications.

Parish Councils should continue to process planning applications that come to them. This can be done remotely, as you are being consulted and asked for your recommendation. The decisionmaker is the District Council so the issue over the voting rules, in this case, do not apply to the Parish Council. However, there may be variations on this depending on your own Standing Orders. NALC is a good source for further guidance: www.nalc.gov.uk/coronavirus

Henry and John Batchelor

Balsham Singers May concert cancelled

SADLY we have had to cancel the Balsham Singers concert that was due to be take place on Saturday 16th May. This is of course, due to the Coronavirus outbreak and concerns of infection.

We plan to resume in the autumn with the 25th anniversary concert in December. Thank you for all the support from the community.

Sue Foxall,
Balsham Singers committee member,
balsham_singers@hotmail.co.uk

**BRICK
MARKETING**
Injecting power into your marketing

brick-marketing.co.uk
hello@brick-marketing.co.uk

afbfitness
PERSONAL FITNESS TRAINING
Specialist in medical EXERCISE REFERRAL

Anton Flynn
07837 065946
afbfitness.co.uk

**PJB
Maintenance**

No job too small
Ground work, Patios, Floor & Wall Tiling, Fencing, Roof repairs, Demolition
CPSC Licence
Free Estimates

Call **Peter Belsom** on
Mob: 07799 183308
Tel: 01223 668475

MOPS HAIR SALON

HAIR BY JO DENNY
WOMEN | MEN | CHILDREN
CUTTING & COLOURING

41 LINTON HIGH STREET
(BEHIND BOSWELL'S BAKERY)
t: 01223 893 285

The Marsh mail



MARCH has been an eventful month. The spread of the Coronavirus has been, and continues to be, one of those *once in a generation* events that the UK government has had to assess, mitigate against and put in place contingency plans in double quick time. Similarly, for the College, balancing the rhythms of the academic year (including the approaching exam season) and the reality of student, parent and staff absences as the outbreak has developed, has been a careful balancing act.

Despite the disruption of the Coronavirus, the College still managed to stage the annual school performance in March. This year, the students put on *The Caucasian Chalk Circle* by Bertolt Brecht. The Arts, and the school production in particular, take students on a journey that grows them in quite extraordinary ways; the countless rehearsals, learning of lines and final performances develop extraordinary resilience and grit in the participants. I attended the Saturday performance and it still amazes me how students who might be usually quiet and modest in lessons blossom into confident and accomplished actors on stage. Brecht demands a lot of his cast and it was wonderful to see the students rise to the challenge, guided and led by the Drama Department.

By the time you are reading this, over 100 English GCSE students may or may not have travelled, depending on the emerging coronavirus situation, to Cambridge to watch *An Inspector Calls* by JB Priestley. It is a play that sometimes provokes fierce discussion around social hypocrisy and the boundaries of justice and responsibility. I recently read a critique of the play in a *right of centre* magazine that was scathing of the plot and Priestley's socialist motives. At the same time the article was keen to explain how Priestley's skilful writing was able to draw in, and dupe, the audience into sharing his world view. In other words, according to the article, Priestley's ideas are preposterous but he is a dangerously clever advocate of them and we have to be aware.

The magazine article is a clear example of how the issues Priestley raises are as divisive in 2020 as they were in 1945 when the play was first performed. The teaching profession carries a great responsibility in educating students to be independent, critical thinkers who make up their own minds around some of the big questions in politics and society. *An Inspector Calls* is rich material for debate and I know the students enjoy discussing these big questions in lessons which undoubtedly inform their beliefs and thinking.

Experiences such as *The Caucasian Chalk Circle* and *An Inspector Calls* are essential parts of a rich curriculum that grows passionate lifelong learners in the spirit of the Village College ethos. They also provide students, and especially Year 11 students at this time of year, with the grit to keep working for the upcoming GCSEs when the end isn't quite in sight. If you have a moment over Easter, I hope you can spare a thought for the Year 11s who will spend most of their break revising hard for the approaching exams. In the meantime, I hope you all have a restful Easter.

Doug Brechin, Assistant Principal

Note from editor: This was written before the schools were closed due to the Coronavirus

BARTLOW
counties 3
CHARITY WALK

Bartlow walk cancellation

AFTER listening to the government advice in recent days, the Bartlow Walk Committee has made the decision to postpone this year's walk until 2nd May 2021.

It will be very sad not to hold the walk in its 17th year but we have to follow the advice for limiting large gatherings and keeping both the public and the organisers safe.

Please put the date in your calendars for next year. We look forward to seeing you all then.

Duncan Ogilvy Walk Co-ordinator 893644
Written by Hetty Findlay 890353

Save the date

WE are not planning to hold a Scarecrow Festival in Linton this summer – instead we hope to turn your creative energy to thinking about trees instead.

It may seem too early to be thinking about Christmas but we want to let you know that a Christmas Tree Festival is planned for 5th–6th December in St Mary's Church. The event will be open to any groups, schools, individuals or businesses who would like to bring a tree to display. Trees can be real, artificial or made in an alternative way eg junk modelling.

We ask that lights are battery operated only. Other decorations may promote a group or business or follow a theme of your choice. Various events and entertainment will be planned for the weekend.

Look out for more information over the coming months.
Pam Richardson, St Mary's Events Committee
events@stmmaryslinton.org.uk

A CAUSE célèbre reported in practically every newspaper in England and Ireland, this story begins far away but reaches its scandalous climax in Bartlow.

Henry Bickerstaffe, a vicar's son, was studying at St Bees Theological College in Cumbria in 1850 when he met Miss Elizabeth Drew, a vicar's daughter. A respectable twelve-month courtship preceded their wedding at the Drew family home in Ireland.

Over the next seven years they produced four children and moved several times before Henry obtained a Living at Morecombe Bay. But he had become unsettled and was frequenting public houses.

His behaviour became so outrageous that he got the sack, losing both the family home and their income. They moved to Leeds relying on remittances from their respective parents.

There were many quarrels as Henry's habits became increasingly irregular. By 1859 Elizabeth concluded that her husband was a violent drunkard. She sought police protection but before the police arrived Henry abandoned the family.

Later that year he reappeared in Surrey as curate to the Reverend Blancker. Henry lived with the family and had the use of their horses and carriages. When a friend of the family, Miss Anna Campbell, came to stay Henry paid her so



St Mary's Church Bartlow

Photo supplied by Gilly

much attention that Blancker felt he had to have words with him about it. Even so Henry and Anna became engaged.

There was further consternation when Henry got so drunk that he fell off the couch and was banished from the Rectory. Blancker warned Anna about Henry and advised her to finish with him. She was not persuaded.

Anna's father had died leaving her "£5,000 in her own right absolutely" (currently £600,000) and Anna was in delicate health. This may have been her attraction for Henry but what did she see in him? At the age of 38 was she becoming desperate?

Plans for the wedding pro-

ceeded swiftly. A date was fixed for 15th October, 1859 with a wedding ceremony in Brighton followed by a *déjeuner* for 60 guests.

When announcements were placed in the press Henry got the collywobbles. Bigamy was still a capital offence at this time.

The announcement in *The Times* came to the attention of Mrs Elizabeth Bickerstaffe back in Leeds, who reported it to the police.

On 15th October, the wedding guests arrived at the Church as did the bride. Henry did not. Anna's brother tracked him down and was told that Henry felt a discreet marriage would be "more

consistent with the feelings of a Christian Minister". Anna, determined to have her wedding, agreed.

A more discreet wedding was quickly arranged for 8th November 1859 at St Mary's Church, Bartlow. Anna's brother was a witness and probably brought Henry to Bartlow himself, to make sure he arrived this time. Presumably Bartlow was chosen for its obscurity and its distance from both Brighton and Leeds.

The happy couple left Bartlow for a brief honeymoon in Cambridge but Anna's brother came galloping up to Cambridgeshire again. He had discovered that Henry was already married. Henry alleged that his first wife was dead and buried in Yorkshire before eventually admitting the truth and fleeing.

A warrant for his arrest and his picture in the *Hue and Cry* meant Henry could avoid the inevitable for only a few weeks. He was arrested in Ryl and taken to Leeds Assizes for trial. He offered no defence and in early 1890 Henry was sentenced to three years penal servitude.

The first Mrs Bickerstaffe divorced him. The second one didn't need to, as her marriage was never valid. Anna was saved the trouble and retained her "£5,000 absolutely in her own right."

Gilly Cunningham

Historical Society

WEST Wickham 100 years ago was the topic of an excellent presentation given by local historian Janet Morris at our February Meeting.

At the turn of the century there were few family photographs available, however postcards were produced on a variety of subjects covering rural areas, as well as better known events taking place in our towns and cities.

The communities of West Wickham, Burton End and Streetly End were all built along a ridge, with the church approximately at the centre and this is where we began, with a very early photograph showing the box pews inside the church, before they were removed in 1900 as urgent work was required in the chancel. Outside the church stood the brick-built Village Pound.

Along with a vast array of postcards, Janet also gave us an insight into the lives of the families who lived there at the time, albeit Big houses, or cottages, each had a tale to tell. Obviously, some properties are long gone, along with the numerous trees along the highways and byways shown at the time. But many homes remain, which have been up-dated for modern day use.

A large thatched barn was the original Hall at Streetly Hall Farm, which, like many buildings, was destroyed by fire as, in more recent times, was The Chequers Public House.

Burton End has become almost part of West Wickham since tarmac was laid down and the in-building of houses following WW2. History on your Doorstep once again proved very popular.

All meetings of the Linton and District Historical Society are cancelled until further notice, namely, 21st April Landscape of Religion and 19th May The History of a Town Crier. All speakers will be invited back as part of our new season starting in September.

Margaret Creek

Springfield House B&B
14/16 Horn Lane, Linton
River views from bedrooms & guest lounge:
01223 891383
www.springfieldhouselinton.com

Barn Owl Accommodation

Private self-contained annexes all in Linton
www.barnowlaccommodation.co.uk
Call Suzanne on 07767 941188

STEVE WEBB
Painter & Decorator
Now upcycled furniture painted to your requirements
Excellent present ideas
Call for viewing details
Tel: 01223 893864

PLANNING APPLICATIONS

UNFORTUNATELY the South Cambridge District Council Planning Website is not working as they are having a problem with their new software.

We will try to update the list when the problem is resolved.
Editor

**A & R
PLASTERING**
All aspects of plastering undertaken:
Plasterboarding
Rendering
No job too small
30+ years experience
Free estimates
Tel: 01223890228
Mobile: 0774 8627920

DESIGNER DRAPES
Local Curtain & Blind Specialist
01223 890556
WATERCOLOUR PAINTING
Explore the magical world of water-colour painting with an experienced artist, in the comfort of your own home.
For details, please contact:
Susan Mackenzie (01223) 891521 or:
sjhmac2@yahoo.co.uk

MOBILE CHIROPRACTIC SERVICE
GCC-Registered Chiropractor
ALEXANDER M SMITH
01223 967565
SOUTH CAMBS AREA
(Based in Linton)
Effective care in the comfort of your home
- Low back pain & sciatica
- Neck pain & headaches
- Muscle spasm/tension
- Shoulder & Knee pain
- Postural problems
www.alexandersmithchiropractor.co.uk

GARDENER
N.C.H. QUALIFIED
All garden maintenance including:
Weeding - Mowing
Hedge cutting - Turfing
Garden clearance
Shed / fence treatment
Hard/soft landscaping
For a friendly professional service please call:
Darryl Tilling
01223 892133
or
07932 021277

Ask Edward
Garden & Home
Routine Garden & Home Maintenance
Gardens cleared, restored & enhanced.
Year round garden programmes available.
'No job too small'
For a free estimate & friendly service,
Linton based, call
07768701010 or
Email:
edwardsgarden1984@gmail.com

Westlakes
Painting & Decorating
Les Westlake (exterior only)
Mobile: 07929 501101
Tel: 01223 892866
Clive Westlake
07900 492127
Adam Westlake
07917 890752

PSH Electrical Services
Rewires, New builds, Extra lights, Extra sockets, Repair works, Garden lighting, Showers
Registered NIC EIC domestic installer
email
pseletrical27@gmail.com
telephone 07867980738

CHRISTOPHER MARKHAM
HOME & GARDEN SERVICES
Interior/Exterior Decorating
Fencing, Guttering
Turfing, Garden Clearance
Lawn & Hedge Cutting
Decking & Patio Cleaning
Patios & Driveways
Call on
(01223) 892889
or 07973 294946
No job too small...

Reports Round-up January 2020

CONSERVATION Area Re-appraisal – Present: Cllrs Hine, Gardner and Enid Bald

Reviewed the outline of the Conservation Area, with new areas to be incorporated and others to be omitted, depending on historic or architectural merit. Next is to evaluate, noting changes since the last appraisal and the effect of these. Volunteers are invited to join the group.

Local Plan Consultation held at Balsham, although others might be planned for Linton later in the process. Please be aware of the proposals as they come through (in publications or on the SCDC website), and their impact on our village.

Traffic Working Group – Present: Cllrs Mannassi, Hine, Enid Bald. See full report and council minutes.

CCC waiting and parking restrictions to be considered as a model for parking within Linton. For this, we need clear double yellow lines (as requested in LHI) and delegation of authority for enforcement to PCs. GCP November meeting re: Rural Transport Hub – it is the only site, would address local parking issues, would encourage bus and cycle use, the need was researched in January 2019 by GCP. LPC wrote letter of support. Concerns of residents are for statutory consultees, eg the police, to assess when planning permission is sought. Correspondence items were referred to relevant groups. Back Road – to work with Hildersham PC. Road flooding – riparian owners to be requested to clear or re-dig their ditches.

Chalklands Residents Association – Present: Cllr Enid Bald invited. Melanie Laing the Community Warden, described her work to help older residents remain living independently in their own homes. Employed by Age UK and funded by LPC, SCDC and CCC, client fees and ACES donations, around 25 households are supported through contacts, small jobs, information, etc. A lively meeting.

Rivercare – now renamed FROGS (Friends of the River Granta...nearly). A litter pick on Camping Close and along the Granta, from Horn Lane Ford to Pocket Park by volunteer FROGS and Froglets – amazing what we found... At the meeting that followed, Helen Brookes gave updates on funding, organisation and equipment – even a grappling hook. Background given on previous river/floodplain restoration work by LPC. Possible projects discussed for working together. Congratulations and thanks to all participants.

Standed and Future Airspace – Representatives of Parish, Town and Borough Councils surrounding Standed. All are affected by the flight paths (a concern for Linton), type of aircraft, noise, emissions, etc. This was a focus group on how the changing needs for airports, business and travel could be met. The range of interests, experiences and knowledge of attendees was wide, with concomitant range of opinions and suggestions. As LPC has no agreed views on these matters, the views were personal – to the benefit of Linton, I hope. The charity donation is going to ACES.

Cam Valley Forum – Present: Helen Brookes of FROG, Cllr Enid Bald.

Despite the rain, river levels are still only around 83% of normal flow: we need to manage the river for both drought and flood. The presentation showed the work of the EA, mainly on fish and fishing – the largest participant sport. With the right conditions, fish and other wildlife, will thrive. Ways to improve our rivers for accessibility, environment, leisure and wildlife were described. We have a rare chalk stream – we should give it due regard.

Enid Bald

Linton and COVID-19

NOT sure what you should or should not be doing at the moment with the COVID-19 outbreak? The Parish Council has all of the information and government advice on the website: <https://linton-pc.gov.uk/coronavirus-covid19>.

The Parish Council has also compiled a list of local businesses which are offering additional services below.

•Sweet Talk News – Offering a delivery service for shop products. Free delivery for over 70s and a small charge of £1.99 for delivery for others (free delivery for all for orders over £20), with all goods being left outside the door. You can pay via internet banking, cash or cheque. To order call on 07930 389076 or 0893480.

•The Crown Inn – offering a collection service on a range of hot meals. They are also offering boxes of supplies which range from essential food boxes, in both small and large to vegetable bundles. These are available for collection, and if you would like to order, call 891759 and place your order before 3pm for same day collection.

•The Linton Kitchen – offering a Tuck Shop service with both collection and delivery available for those within a one-mile radius of the shop, delivery is free on orders over £20. They offer a range of sandwiches, savoury foods, cakes and pantry items. If you wish to collect items the collections are available on Monday, Wednesday and Friday between 12pm and 3pm. These can be ordered online at <https://store.thelintonkitchen.com/>

•The Dog and Duck – offering food boxes both for delivery and collection of essential supplies, these range in size and price and include meat and vegetables. Please order two days ahead and payments will be taken over the phone. For more information or to order please call 890349.

•Plumbs Dairy – at the moment overwhelmed so only doing a milk delivery service to registered customers.

•Clark & Son Wholesale and Catering Butchers – offering fresh meat deliveries to your door with free next day delivery. They offer three box packages of varying size starting at £25.00. To order call 01787 319330.

Clerk
See also page 1

Planning Updates February-March 2020

WE had applications for extensions and other works, with another application to split a large house into two smaller dwellings – we might see more of these to meet housing needs. Comments often include materials to be used and how they would suit the street scene.

Bartlow Road – Groundworks had begun prior to the Discharge of Conditions. In particular the Surface Water Drainage, condition 10, was required to be dealt with in conjunction with LPC. This and other submissions are based on incorrect or misleading data and have been challenged. LPC promptly informed SCDC who took action to stop the unlawful work. The effect of typical rainfall on the site and the Granta rising over the floodplain has been noticed...

Horseheath Road – Concerns over the position and extent of a strip of land marked as an SCDC asset, between Lonsdale and the development site. This could affect the validity of planning decisions.

17, Green Lane – The current/new fence must be replaced with one similar in design to the original and in the original position, in line with the cottage boundary.

SCDC Planning Process – Proposed changes to the planning process could have given more decision-making power to officers and unelected bodies. Concerns were raised that they would fail to consider the detailed and considered comments from PC's, and reduce the ability of the PCs to make representations on behalf of residents. The proposals will now be reviewed.

Enid Bald

Speedwatch News



Image from Cambridgeshire Constabulary

AT the time of writing, the spring weather should hopefully soon be springing and the Speedwatch team will be out and about again with our new equipment from Cambridgeshire Police ... as long as Coronavirus doesn't have other ideas.

Linton currently has dedicated kit which will allow the team to monitor roads with speed limits of 20 - 40mph at the designated sites that have been signed off by the police team.

Speedwatch Needs You

We are now looking for more volunteers. There are currently five people who have undertaken all of the speed monitoring in Linton so far. You may have seen us out and about on the High Street, on Hadstock Road in the Grip, along Back Road, Balsham Road and Horseheath Road?

We have to have at least three trained volunteers to run a session, so availability of the volunteers limits the amount of speed-watching that we can do. Once trained, volunteers arrange the speed monitoring sessions between them, for periods of about an hour. If you occasionally have an hour to spare and are keen to help with the Speedwatch initiative, we would love to hear from you.

Volunteers firstly need to be available to attend an hour and a half training session. The next session run centrally at Cambourne Police Station is due to take place at 10am on Saturday 16th May. If you would like to book directly on this course, please email speedwatch@cambs.pnn.police.uk and copy us at the Parish Office at lintonsspeedwatch@outlook.com Parking is available at Morrisons which is very close to the Police Station.

We are also hoping to arrange a training session (subject to numbers) in the village to save the trip out to Cambourne. Please contact us on the Linton Speedwatch email above if this would be of interest to you.

Finally, we are sometimes asked, "What is Speedwatch?" The Police describe the Speedwatch scheme as follows:

Community Speedwatch is a scheme to allow trained volunteers to address speed concerns in their communities. This is achieved by:

1. Undertaking high-visibility roadside operations to educate speeding drivers, by displaying their speed on a digital display with a view to improving driver behaviour.
2. Reporting to the Police the details of speeding vehicles in specific areas where speed is of concern. These speed monitoring reports enable the police to:
 - a. Send advisory letters to the registered owners to confirm to them the speed at which their vehicle was travelling and that the speed was in excess of the speed limit.
 - b. Use the data gathered to inform Police and others on the allocation of resources and general road safety issues.
3. Delivering locally based feedback and problem solving schemes where speeding is of specific concern to the Community, operated by trained volunteers and supported by the Police.
4. Speedwatch is not enforcement: it is about raising awareness of speeding within communities and educating drivers.

Kate Kell

A J Pest Control Ltd

Local Professional Service
Member of NPTA
Domestic/Commercial/Agricultural
Experts in all areas of pest control



Mice, Rats, Wasps, Bees, Hornets, Moles, Moths, Ants, Bed Bugs, Fleas, Flies, Squirrels, Birds, Woodworm.

Tel: 01799 542 505 Mobile: 07855478824
E-mail: info@ajpestcontrol.com www.ajpestcontrol.co.uk

ProClean

'Your Complete Cleaning Solution'

- *Carpet Cleaning *Rugs *Stain Removal
- *Car Valeting *Caravans *Motor Homes
- *Upholstery Cleaning *Stain Protection
- *Floor Cleaning / Scrubbing / Sealing / Polishing
- *Pressure Washing of Patios Paths & Driveways
- *Domestic Cleaning * Top Ups & One Off Cleaning
- *Gutter / Fascia Cleaning

*Contract Office Cleaning (Flexible Options)
TEL: 890433 Mob: 0777 375 8355
74 Bartlow Rd, Linton, Cambridge, CB21 4LY

- 24 hour emergency service
- Boiler breakdown and servicing
- Boiler upgrade



KA PLUMBING & HEATING

Office: 01223 890554
Mobile: 07890 576608
kaplumbingheating@hotmail.co.uk



LINTON PAVING COMPANY

YOUR LOCAL LANDSCAPING
BLOCK PAVING & PATIO
SPECIALIST.
PROPERTY MAINTENANCE
Int/Ext Painting, General Repairs
FRIENDLY SERVICE.
FREE QUOTATIONS
Tel: Andre Jacobs

Mob: 07765 594398
Office: 01440 702498



Neil Claxton

Painting & Decorating
Interior/Exterior
Rooms Emulsioned
from £120

FREE ESTIMATES

Tel: 01223 893487
Mobile: 07724073045

E-mail: n.claxton925@btinternet.com

LINTON CABS

lintoncabs@btinternet.com

Taxi Private Hire

Airports, Train Stations, Seaports, All Local Travel

Call Murray or Martin

07958657300
07419984087

De-Salis Wealth Management

Associate Partner Practice of St. James's Place Wealth Management

SPECIALIST ADVICE ON
Personal Financial Planning – Pension Planning
Investment Planning – Protection Planning

Ian Cross DipPFS
01223 892821

E-mail: ian.cross@spp.co.uk Website: www.de-saliswealth.co.uk

De-Salis House, 6 Hillway, Linton, Cambridge, CB21 4JE

The Partner Practice is an Appointed Representative of and represents only St. James's Place Wealth Management plc (which is authorised and regulated by the Financial Conduct Authority) for the purpose of advising solely on the group's wealth management products and services, none of which are set out on the group's website www.sjp.co.uk/products. The 'St. James's Place Partnership' and the titles 'Partner' and 'Partner Practice' are marketing terms used to describe St. James's Place representatives.

Parish Council Matters - Council Meeting Minutes

ABBREVIATED Minutes of the meeting of Linton Parish Council held at 7.30pm on 20th February 2020 at the Cathodeon Centre.

Apologies for Absence Cllr Brian Cox (Dr), District and County Councillor Henry Batchelor and District Councillor John Batchelor.

Councillors' Declarations of Interest None.

Councillor Vacancies: There are currently five vacancies available for co-option. Consideration of the application from a parishioner requesting to become a Councillor.

The applicant who had submitted a request to join the council prior to the meeting addressed the Council and introduce herself. She advised that she would like to get more involved in village life as she has lived in Linton for a year and has particular interest in education, youth and sport. She was requested to leave the room to allow Council to discuss her application.

Cllr Chris Hine proposed that Council accept the application and offer co-option, Cllr John Bald seconded. **Agreed.**

Chairman's Comment The grounds maintenance contracts have been reviewed and although Leadwell Meadows will need to go back out to tender, the existing contracts are working well so it was suggested these could be rolled over for a further three-year period.

Congratulations to the ACEs for their recent soup and roll get together which was very successful and well attended as always.

Open Forum for Public Participation. There were several key aspects raised by the residents that attended the meeting which were Speedwatch, speeding and the recent works at Hadstock Road and Market Square and the continued issues with parking. **To Approve minutes of the Parish Council meeting held on 16th January 2020.** Cllr Joh Bald proposed the minutes with no adjustments, this was seconded by Cllr Amy Smith, put to a vote and agreed with two abstentions. **Agreed.**

Planning Matters; Consideration of the Planning Committee minutes from the meeting of 16th January 2020 and the Extraordinary Planning Committee meeting held on 6th February 2020. **Noted.**

Horseheath Road; Update on the Planning application for Horseheath Road, application reference S/4418/19/RM, for the erection of 42 dwellings including the provisions of 0.45ha for allotments on the land south of Wheatsheaf Barn, Horseheath Road, following the Planning Committee meeting of Linton Parish Council. Cllr Enid Bald updated Council that comments were submitted.

Planning Application S/0793/18/FL, 1 Horseheath Road; Correspondence item 45. 3C Shared Services, regarding the possible new road names. Cllr Enid Bald updated Council that 3C Shared Services have received the list of other viable names that the Parish Council proposed be considered for the road names. LPC are awaiting a formal response outside of the holding letter.

Bartlow Road Planning Applications

Update on the planning appeal, reference APP/W0530/W/19/3235259 for Bartlow Road planning application S/2487/18/RM. There has not yet been a decision or an update, the Clerk has contacted the Planning Inspectorate Case Officer and requested an update, but they are yet to respond.

Notification of the discharge of conditions being received by Linton Parish Council on planning application S/2501/19/RM. These are coming through as for information which does not allow LPC formal comment. These are not fit to be discharged as they are based on faulty and inaccurate data, so LPC are sending in comments for consideration by the Case Officer.

Consideration of correspondence item 76. SCDC re Planning delegations update following the planning meeting of 12th February 2020. **Noted.** It was felt by Council that this change of policy provides the Planning Officer more power, removing it from Council.

District & County Councillors' Reports & Business Verbal update and consideration of Written reports submitted for February 2020. **Noted.**

Monthly Finance Matters

Consideration of purchasing an iPad or tablet with cellular capability for the office for both the data app for the speed sign and for use on site visits when reviewing planning applications now that SCDC is going paperless. Verbal update from the Clerk. This item was deferred to the next meeting and it was requested that Cllr Lee Gardner and Cllr Chris Hine are providing the information in advance to discuss their views on the specification with the office.

Confirmation of receipt of the precept submitted for 2020/2021 from South Cambridgeshire District Council (SCDC) and statistical information pertaining to this produced by SCDC as a year on year comparison. **Noted.**

Membership Renewal and Funding requests

Consideration of the request for membership renewal from CPRE at a cost of £100 per annum.

Cllr Enid Bald proposed, Cllr Kate Kell seconded. **Agreed.**

Consideration of the request for membership renewal from ACRE at a cost of £57 per annum. Cllr Chris Hine proposed, Cllr Enid Bald seconded. **Agreed.**

Consideration of the request for membership renewal from Cam Valley Forum at a cost of £15 per annum. Cllr Enid Bald proposed, Cllr Amy Smith seconded. **Agreed.**

Consideration of the funding request from EACH (East Anglia's Children's Hospice) to allow them to continue offering day care, therapies, overnight breaks, a variety of specialist play and end of life care. Cllr John Bald proposed that LPC do not offer funding, Cllr Simon Hill seconded. **Agreed not to offer funding with two abstentions.**

Traffic and Roadworks Matters

Update from the Traffic Working Group meeting held on 13th February 2020. **Noted.**

Speedwatch update. Cllr Kate Kell spoke on this item and confirmed that Linton has now secured some of its own equipment, which will make a huge difference as it can be difficult scheduling the checks when sharing with other villages. This equipment can also be used to monitor within the 20mph zone, unlike the standard equipment. This will allow for speed checks within the High Street and round the one-way system.

The new Morlock speed monitor, which was provided through the Local Highways Initiative for Hadstock Road and the Grip area, is also portable so this can be placed at numerous locations throughout the village, once the sites have been agreed.

Cllr Kell also advised that two new locations have been agreed by Cambridgeshire Constabulary to allow them to be monitoring sites, one being on Symonds Lane near Palmers Close and another being Tower View, leading to Balsham Road.

Youth

Consideration of the monthly reports for December 2019 and January 2020 Cllr John Bald commended on the reports and actions of the group when dealing with challenging youngsters attending sessions.

Consideration of the quarterly report from October 2019 to December 2019 from the Beacon Youth Trust (BYT) and Romsey Mill (RM). **Noted.**

Consideration of the request from The Beacon Youth to paint the youth hut on the Meadow Recreation Ground, currently owned by Linton Action for Youth. Cllr Enid Bald raised that the building is old and is not fit for purpose, although the location of the hut is good on the Meadow Recreation Ground. Cllr John Bald expressed reluctance to spend money on the existing portacabin and proposed a new building.

Cllr Chris Hine proposed extension to the pavilion that could be used by BYT, this would be possible long-term solutions. It was suggested that the group of volunteers who have offered to assist could help as part of a short-term project, including the painting of the hut whilst other options were reviewed as a long-term solution.

Cllr Enid Bald proposed dark green for a colour for the exterior. LPC have no concerns over interior works.

Trees and Biodiversity

Consideration of the Tree Report from the meeting with Mr Ian Lorman from Argenta Tree Services Ltd to review the tier one trees, held on 30th January 2020. Verbal update from Cllrs E Bald and Cllr Kate Kell. The Clerk was requested to source quotations for 20 units of tree guard and bring back to the next meeting.

The Clerk was also requested to bring Argenta Trees' Tier One Tree Report back to the next meeting for full review.

Cllr John Bald proposed that the details listed in Cllr Enid Bald's report be accepted and actioned, this was seconded by Cllr Kate Kell, put to a vote. **Agreed.**

Consideration of parishioner's email requesting planting of new trees along Horseheath Road. Council reviewed the request; however, this land is not owned by the Parish Council and falls under the ownership of Cambridgeshire County Council's Highways Department.

It was decided that planting on land that is not owned or maintained by LPC could cause future repercussions and allow for a possible dispute to be raised regarding the maintenance of all the trees along the verge should the Parish Council plant here. Due to this factor it was decided that this could not be progressed as a project.

Village Enhancement

Dog Fouling; Consideration of installing the dog foul bag dispensers at various locations throughout the village along with improved signage as part of a campaign to reduce the amount of dog fouling throughout the village.

Cllr Enid Bald proposed that five units be purchased and placed at different locations throughout the most used locations for dog walking within the village. Ideally to be placed near the dog litter bins. The Village Custodian would be responsible for refilling bags when required. Cllr Chris Hine seconded this. **Agreed.**

Linton Parish Council Office; Consideration of converting the external fire door at the bottom of the stairs of the Village Hall to a private, main entrance and exit to the Parish Council Offices. This has been agreed by the Village Hall Trustees Committee, should the Parish Council accept the cost of the entry system.

Cllr Enid Bald proposed, Cllr Chris Hine seconded. **Agreed.**

Correspondence items not pertaining to an agenda item

Item 19. Victor Harris's request to book the Meadow Recreation Ground from 14th-17th May 2020. Cllr Enid Bald proposed, Cllr John Bald seconded. **Agreed.**

Item 35. Parishioner email regarding the flood plain behind Kingfisher Walk, offering support for the premise of a second community orchard following the Linton News Article from Cllr Enid Bald in February's edition. It was agreed that LPC would support in principle. **Agreed.**

Item 72. Parishioner email re 4x4 response volunteers in Linton. The Clerk was requested to invite the parishioner to the next meeting to present on this topic.

The meeting continued onto a confidential section and was closed at 10pm.

LINTON PARISH COUNCIL

The Village Hall, Coles Lane, Linton,
Cambridge CB21 4JS Tel: 891001

Clerk to the council – Ms Kathryn Wiseman

Email: enquiries@linton-pc.gov.uk

Website: www.lintoncambridgeshire-pc.gov.uk

Facebook: www.facebook.com/lintonpc

Office open: Monday, Tuesday, Wednesday and Friday 9am – 12noon. Closed on a Thursday.

Full Council meetings are held at the Cathodeon Centre, commencing at 7.30pm on the third Thursday of the month, except for August.

sqcarsales.co.uk

for service & quality

SQ Car Sales

Quality used cars

t: 01223 778 448

m: 07908 128 164

G. DYE & SONS

GENERAL BUILDERS,
GROUNDWORK & MAINTENANCE,
CONSERVATORIES & UPVC WINDOWS, KITCHEN &
BATHROOM REITS

ALSO INTERIOR & EXTERIOR DECORATING
REFERENCES AVAILABLE

For enquiries please call

Mobile:

07961 342887

Tel: 01223 892089

georgedye738@btconnect.com



Free Estimates

Bentens

Accountants and Tax Advisors

Abbey House, 51 High Street
Saffron Walden

01799 523053 www.bentens.co.uk

ADMIRAL ESTATES

Residential Sales and Lettings

- Local Linton Office
- Cambridge Office
- Specialists: Linton & Local Villages
- 20 Years Experience

Do You Need Help With Your Property?

Call us Now: 01223 891227

www.admiralestates/linton



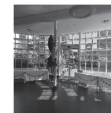
Working with Terry Waite & Emmaus Cambridge



Looking for a party venue?
Holding a Meeting?

Want a venue on your doorstep?

Look no further than Linton Village College



The main hall is perfect for large gatherings, weddings & parties & has access to the kitchen facilities

Our modern atriums offer bright open spaces. They are interlinked by a café area and have access to a lawned area.

For meetings, courses or presentations, the bright, airy Boardroom offers seating for 12 and is fully equipped with presentation equipment.

For more details, please contact jenny.logan@lvc.org or call 01223 891233 ext 303.

The Darryl Nantais Gallery
Fine Art, Framing & Restoration



Brian Seymour



Darryl Nantais



Magdalena Morey

We offer a wide selection of artwork, contemporary & traditional, local & international, including paintings, prints, ceramics, glassware, sculptures & jewellery. The Gallery also offers bespoke framing, picture restoration and cleaning.

Proprietor: Karl Backhurst

59 High Street, Linton, Cambridge CB21 4HS

01223 891289 - www.linton59.co.uk

Find, follow & like us on Facebook & Instagram for regular news updates

Tuesday to Saturday 10am to 4pm