

# Is there a big cat on the loose?



Colin Saunders  
photographed this large  
cat-like creature two years  
ago

A STRANGE encounter left a local woman intrigued last month and caused a series of similar accounts to surface. Kay Satchell was driving along Back Road, when she spotted something unusual and pulled over. "This may sound crazy," said the orthodontic therapist, "but in the distance along the edge of woodland was a large black cat." After describing the incident on the Linton Community Board Facebook page, at least five other villagers got in touch to say that they had seen the same thing. "I'm so sceptical about these types of stories, but I know that I saw something unusual," Kay told the Linton News. Describing the animal, Kay said: "It was much bigger than a domestic cat, it was jet black and moved like a cat, that much I'm 100 per cent certain. I was so shocked. I tried to video it and take a picture but my phone just wouldn't zoom or

focus enough to capture it." Another Linton resident, Colin Saunders, got in touch to say that he had seen a similar animal in the same place a few years earlier, and provided a photo (left). Colin said "It definitely wasn't a fox, it was a big animal and had all the mannerisms of a large cat." Multiple reports of large cat sightings have been received by Cambridgeshire Police. The so called 'Fen Tiger' was first spotted in Cottenham in 1982 and is said to roam Cambridgeshire and the surrounding counties. Usually described as being large and black, the animal (or animals) have been photographed on several occasions. In 1994, footage emerged of what the British Big Cat Society said "is almost certainly a large cat-like animal."

Linton News Team



"Friend, servant and defender of Linton"  
In memory of Enid Bald  
tribute on page 7

## Mussolini added to restored village sign (just to be clear, we mean the goose)

SEVERAL years have passed since the village sign has visited me for a little restoration. This time, it was rather more serious.

Dr Brian Cox had already expertly arranged for the heavy sign to be taken down, temporarily stored, and had carefully removed half a bucket of lichen and flaking paint.

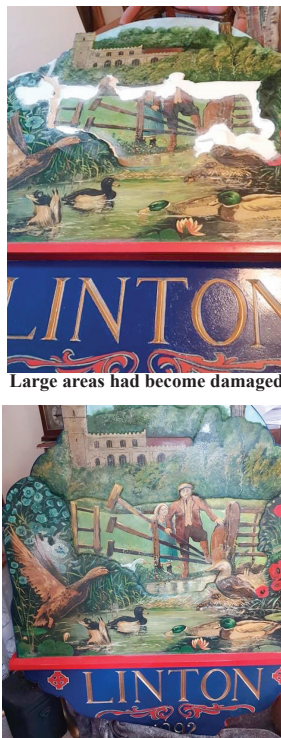
Our tired looking village sign was then transported to my studio where it began to dry out. After a couple of weeks the true extent of the damage caused by extremes of weather in recent years became apparent.

Further removal of embedded lichen and large areas of erupting, bubbled and loose paint was required. I was beginning to get concerned at the depth of the restoration. There was much unseen water damage, but only one way to go!

I began by digging out rotten areas and filling cracks and holes. Then, I sealed and primed the bare wood ready to build up the levels. Thanks to the reference again supplied by Brian I was able to recreate fairly faithfully the original artwork in oil paint - perhaps adding a little extra here and there.

During the work, the sad news of the passing of our well loved white village gander was announced. He had brought an abundance of joy to young and old for many years. I thought it therefore a fitting tribute to add our beloved bird to the painting. I hope you agree he continues to be a ray of light.

I re-worked the gold lettering, oxford blue and red paint, and finished by giving the whole sign-face two coats of finest gloss yacht varnish.



Large areas had become damaged

Can you spot the new addition?

Darryl Nantais

## Hunt on for Wheatsheaf Way burglars

Do you recognise these men?

Detectives have released CCTV images of two men they would like to speak to in connection with a burglary. The burglary took place on Monday 24<sup>th</sup> January between 3.50am and 4.20am in Wheatsheaf Way. Bank cards, electrical items and jewellery were taken.

Anyone with information on who these men are should contact police online quoting reference 35/5793/22. Anyone without internet access should call 101.



Police are appealing for information on the two masked intruders

## Vaccine mission accomplished

ON 13th December 2021, the government announced that the deadline for every adult to have been offered a covid booster was being brought forward from 31st January 2022 to 31st December 2021.

Granta staff stepped forward to support the "Omicron Emergency Booster National Mission" to encourage everyone who is eligible to "get boosted now".

Between 15th December and 3rd January an extra 7,000 Granta patients were vaccinated. Staff worked the three bank holidays, in addition to squeezing extra vaccine clinics into their normal working days, to ensure that as many patients as possible were vaccinated before the new deadline passed.

### New Hospital Helpline for Patients

The Covid-19 pandemic has added to the strain on all NHS services. As a result of this, waiting list times for outpatient and specialist appointments and procedures have increased for everybody. This can cause worry and uncertainty about when you will eventually receive

an appointment, and unfortunately Granta has no direct appointment lists. If you have been referred by your GP / are waiting for

-An outpatient appointment  
-An appointment for hospital tests (e.g. scans)  
-A date for an operation or other treatment  
-A follow-up from your hospital team and you have a query about what is happening, there is now a new dedicated Freephone Patient Help Line - 0800 048 5800.

May we respectfully ask that you only call Granta if your condition has genuinely deteriorated, when you will be reviewed by one of the clinical team and appropriate action can be taken in regard to your hospital care. Thank you for your continued understanding, patience and support.

Sandra East  
Head of Patient Services  
sandra.east@nhs.net

## Readers write...

Dear Editor,

I would like to say a huge thank you to the local people of Linton for the incredible support we received with the 2021 Christmas light display in Fincham's Close. We raised a massive £1350, smashing our £1000 goal for the Norfolk Zipper Club who support Papworth Hospital. We are already looking forward to our 2022 display with some huge plans in place for it.

Jordan Cooper

Dear Editor,

Due to the ongoing uncertainties regarding COVID, unfortunately the January & February meetings of the Linton & District History Society have had to be cancelled. It is hoped the situation will have improved by March. Please contact us via email at ldhscamb@gmail.com or telephone 893915 for latest information. Thank you.

Ian Creek

## Corrections

January's Linton News front page article stated that the Parish Council is involved in a legal challenge with Abbey Developments. This was inaccurate. The legal challenge was against South Cambs District Council and has not yet commenced.

# Pat Hughes' secret to a long life

WOULD you like to know the secret for a long life? Then ask Pat Hughes. This amazing lady will be 100 years young on February 1<sup>st</sup>. Pat says she has enjoyed a marvellous life and has no regrets. With her late husband, who was in the Diplomatic Service, Pat travelled the world, being posted to eight countries in 40 years, until their last posting to Panama before her husband's retirement in 1973.

Her favourite places were the Far East, Paris and Saigon. Pat does miss the travel and life in the Foreign Of-

fice, even though she was once followed in Romania during the Cold War as a suspected spy! Pat now lives with her daughter in Market Lane. She still visits the hairdresser each week, loves to wear bright colours, and enjoys a brandy and ginger ale every evening. So let us raise a glass to Pat on reaching her century, and wish her a very happy birthday.

Sarah Hurcum



Pat - 100 not out!

## The Marsh Mail

Linton Village College students have been enjoying enriching learning opportunities in recent weeks. Years seven and eight have benefited from the new carousel structure in Technology lessons this academic year. This has reduced class sizes and enabled students to engage with term-long projects in food and nutrition and design technology.



After last year's limited access to practical lessons, Key Stage Three students have been producing some amazing culinary creations including ratatouille, scones and quesadillas. With a focus on food culture, Year 8 will be producing spanakopita (feta and spinach pie), Caribbean curry, and stir-fry this term.

Year nine students have focused on food science, developing their knowledge of key processes such as aeration, emulsification and coagulation. They have applied their learning to their own practical skills including making honeycomb, pastries and gateaux.

GCSE classes have been mastering advanced core skills and food presentation, achieving some delicious and highly ornate dishes such as mille-feuille and salmon en croûte.

Offering an enriching learning experience is a key priority at Linton Village College. As a community-focused school, we are really keen to develop further connections with local independent catering and hospitality providers. Please get in touch with Ali Harris, Head of Food and Nutrition, if you would like to establish work-related learning links with the College: ali.harris@lvc.org.

Helena Marsh



Mouth watering dishes being produced

## BARTLOW 3 counties CHARITY WALK

SAVE THE DATE

SUNDAY MAY 1 2022

Very exciting news, the Bartlow Three Counties Charity walk is now set for Sunday 1 May. Please save this in your 2022 planners. A great day out is planned, for all ages.

This walk will be raising money for 3 local charities.

The Addebrooke's Robot Appeal  
Granta Charitable Trust for Linton Health Centre  
Bartlow Church Restoration Porch Appeal

The theme will be Robots  
Past Present and Future

Duncan Ogilvy walk organiser 01223893644

Hetty Findlay 01223890353



Get a free sign to deter cold callers

## We're not buying it!

Since 2019 Able Community Care, a Live-in Care Provider, has been offering older people a free door sticker to deter unwanted callers. It is a fact that older people are targeted by fraudulent traders, workmen and fake 'professional' people such as comen advising they are from the Water Board, Gas Board, NHS Covid Dept., etc. As many people have told us, this sticker on a door does tend to mean they walk back down the path!

To date we have given out nearly 70,000 door stickers and if you know of an older person who would like to have one, please email us at info@ablecommunitycare.com telling us how many you would like and the address to send them to.

Angela Gifford  
Managing Director

sqcarsales.co.uk

for service & quality



Quality used cars

t: 01223 778 448 m: 07908 128 164

### Singing Lessons

Sarah Rosewell  
BA (Hons) Music

Individual singing lessons available for all ages and abilities

Whether towards exams or purely for pleasure

- \* CRB Checked
- \* Based in Linton

For more information contact:  
Sarah on 01223 894861

Email: sarahrosewell@hotmail.com



zigzagpilates

• Qualified Body Control Pilates Teacher.

• Classes and 1-1 sessions

• Specialising in older and less able clients.

Contact Rachel 07905105081  
Rachel@zigzagpilates.co.uk  
www.zigzagpilates.co.uk

The Linton Laundry

Shirt pressing  
Ironing  
Laundry  
Eco friendly detergents  
Wet Cleaning  
Door to door service

Call us on 07894 197805  
info@lintonlaundry.co.uk  
lintonlaundry.co.uk

## SHINE

WINDOW  
CLEANING

TEL. 01223 893529  
MOB. 07703 518882

FREE QUOTATIONS

FULL PUBLIC LIABILITY  
INSURANCE

shinewindowcleaningservices@gmail.com

## PLUMBLINE

PLUMBING AND HEATING ENGINEER  
PROFESSIONAL DOMESTIC PLUMBING SERVICE

Including Property Maintenance  
Painting: Tiling: Plastering: Carpentry

Call John on  
01223 893903

Supcik@talktalk.net  
Fully Qualified and Insured

Friendly and Reliable Service No Job Too Small



BODY DESIGN PILATES



Su Matthews  
REPS LEVEL 4 PILATES TEACHER  
& BACK4GOOD PRACTITIONER

07986 692 334

Pilates Classes  
Linton & Horseheath

su@bodydesignpilates.co.uk  
bodydesignpilates.co.uk



Linton



07958 657300

lintoncabs@btinternet.com

Linton Cabs

Private Hire for: Airports / Train Stations / Local Travel

Martin French

# News from the Linton Library

CAMBRIDGESHIRE libraries continue to follow the latest government COVID-safety guidelines.

We are beginning to reintroduce in-person library events. Next time you visit, please pick up a copy of our What's On brochure to find out what's happening at Linton library and other libraries around the county.

7<sup>th</sup>-13<sup>th</sup> February is Children's Mental Health Week. We have lots of supportive books in our Reading Well for Children collection, helping younger readers understand their feelings. We'll be glad to help you find the right one for your child.

February is LGBTQ+ History Month. Celebrate the rainbow with us by choosing from our books by LGBTQ+ authors.

We are holding a mega book sale during half-term, with all items 10p each.

There's a half-term craft activity on Tuesday 15<sup>th</sup> February, which you can drop into or collect and take away.

We are planning to restart our Engage events in March, with a library quiz at 2pm on March 14<sup>th</sup>. Please check at the library nearer the time for more details.

Would you have a collection of items for display for a month in our glass-topped, locked cabinet? Please ask at the library for more information.

Linton library opening hours:

Tuesday 10am-5pm; Wednesday 4pm-7pm; Thursday

2-5pm; Friday 10am-5pm;

Saturday 10am-1pm

Customer Services (regular office hours): 0345 045 5225

Bus Pass application & renewal: 0345 045 1367

Blue Badge application & renewal: 0345 045 5204

Website: [www.cambridgeshire.gov.uk/library](http://www.cambridgeshire.gov.uk/library)

Email for general library enquiries: [your.library@cambridgeshire.gov.uk](mailto:your.library@cambridgeshire.gov.uk)

Lindsay Healy and Ann King,  
Community Library Assistants, Linton Library

# Events at St Mary's Church

THE film *It's a Wonderful Life* will be shown in the church starting at 6pm on Sunday 6<sup>th</sup> February. Cost is £5 per ticket, or £10 for a family. Everyone is welcome, and you may bring your own refreshments.

*Songs for all Occasions* is the theme of a concert to be presented in the church by The Tapestry Singers at 3pm on Sunday 13<sup>th</sup> March. This was postponed from 2020 when choirs were unable to rehearse. Tickets are £7.50 per person, or £20 for a family, and will include interval refreshments. The Tapestry Singers are a mixed-voice choir of sixteen singers based in the west of Cambridgeshire. They sing a wide variety of sacred and secular music ranging over several centuries, and sing unaccompanied. The name Tapestry reflects the variety of styles and the interweaving of the singers' lines of music.

Please contact Sue Ellis for tickets for the film and the concert - phone 892257 or email [events@stmaryslinton.org.uk](mailto:events@stmaryslinton.org.uk)

The regular coffee mornings with homemade cake continue on every third Saturday of the month from 10 - 12 noon.

Come along for a chat with friends or to meet new people.

Sue Mudge,  
on behalf of St. Mary's Events committee

# Adult learning at Sawston Village College



WE have a new Pilates for Improvers course starting on Wednesday 23<sup>rd</sup> February from 7pm to 8pm for six weeks. The fee is £42.

Our other courses have started and whilst some of the popular ones are fully subscribed, we do still have places available on them which can be joined at any time.

We are offering Saturday workshops on 12<sup>th</sup> March which are Bollywood and Indian Dance, Drums for Beginners and Indian Feasts for Friends. Our Willow Plant Support Wigwam workshops are full, but we have a waiting list if you are interested.

Please visit our website [www.sawstonadulted.org](http://www.sawstonadulted.org) for information on all our courses or to enrol, or contact us on 712424 or [community@sawstonvc.org](mailto:community@sawstonvc.org). If there is a subject we don't offer which would interest you, please let us know.

Sue King

# Hildersham Jam Stall and donations to EACH

OUR Christmas donation to EACH was £659, making a total of £1200 donated in 2021. This is a record-breaking amount, and we are immensely grateful to everyone who has made it possible.

We wish to pay tribute to our dear friend, Cathy Myer, who died in December. Cathy was a great supporter of the stall, making delicious marmalades and jellies. The Community Herb Garden, adjacent to the jam stall, was Cathy's brainchild and will live on in her memory. It was planted in spring 2021, flourished beautifully, and we look forward to even more flowers and fragrance this year.

All proceeds from the jam stall and herb garden are donated to East Anglia's Children's Hospices (EACH).

Jill Heale  
893596  
[edheale@btinternet.com](mailto:edheale@btinternet.com)

THE LINTON NEWS Next publication: 7<sup>th</sup> March 2022

DEADLINE FOR NEWS ITEMS:

Wednesday 16<sup>th</sup> February

ADVERTISING

Requests for adverts can be sent to:

Judith Rouse: [adverts.linton.news@gmail.com](mailto:adverts.linton.news@gmail.com)

ITEMS FOR THE EDITOR

Should be sent to Jack Glossop

[editor.linton.news@gmail.com](mailto:editor.linton.news@gmail.com)

FOR DISTRIBUTION QUERIES CONTACT:

Delivery managers: Jenny and Chris Murison, 660408, or 07905 384741 [delivery.linton.news@gmail.com](mailto:delivery.linton.news@gmail.com)

Call 893619 for an audio version of the Linton News

## February bin collection dates (Linton)

Black bins: Monday 14<sup>th</sup>, Monday 28<sup>th</sup>

Blue bins: Monday 7<sup>th</sup>, Monday 21<sup>st</sup>

Green bins: Monday 7<sup>th</sup>

# News from the Linton Womens' Institute

## Protect yourself from scams!



**Fraudulent activity has seen a huge increase since the start of the pandemic**

WE welcomed Bernie Merry, Customer Response Specialist from Nat West Bank, Bishops Stortford.

She supports customers and keeps them safe from scams and fraud. Scammers use grooming techniques to obtain personal details. They can be persistent, friendly, charming, threatening, aggressive and intimidating.

Scams can be conducted in a variety of ways, including postal, phone, doorstep, online, tax refunds, emails, WHO impersonations, or Covid-19 vaccine scams. Banks never ask you out of the blue for personal details or ask you to move your money to a safe account.

Personal details can be found from social media, online surveys or hacking and can be used to cold call you. To protect yourself from investment scams, ask for independent financial advice before investing.

Beware of romantic scams online. You might find your perfect match, but they may play on your emotions and ask for money. Often based abroad, they can be spotted by their poor English, and their refusal to meet you in person or by video call. Don't let your heart rule your head.

Don't send money to someone you have not met in person. Bernie gave us tips to remember - STOP, CHALLENGE, PROTECT. Always report any scams to the bank, the police, or on the government website.

Our next meeting, on Zoom, will be on 1<sup>st</sup> February at 7.30 pm, the speaker to be confirmed. If you would like to join us, look out for posters on the parish notice boards nearer the date for the link.

Sally Proberts (891021)



**Cambridgeshire Family Chiropractic Centre**

Bespoke massage and chiropractic care for aches and pains  
Specific techniques for pregnancy and children  
15 years' experience  
Call 07870568548  
[www.cambridgefamilychiro.co.uk](http://www.cambridgefamilychiro.co.uk)

[lintonerown@yahoo.com](mailto:lintonerown@yahoo.com) [www.erownallinton.co.uk](http://www.erownallinton.co.uk)

**The Crown Inn**  
Joel & Sam welcome you to this family owned business



Seasonal & take out menu available  
Four paws accommodated  
[facebook.com/CrownInnLinton](https://facebook.com/CrownInnLinton)  
11, High Street, Linton, Cambs.  
01225 891759



*Life is better with me as your travel adviser by your side!*

I offer a personal, bespoke, concierge travel service. From city breaks to cruises, luxury beach holidays to staycation and even corporate travel. I can take care of everything for you from start to finish. Following the Covid 19 pandemic, it has never been more important to book your travel with your local experienced travel expert!

**Romy Frow**  
01223 829 080  
[Romy.Frow@travelcounsellors.com](http://Romy.Frow@travelcounsellors.com)  
[www.travelcounsellors.co.uk/romy.frow](http://www.travelcounsellors.co.uk/romy.frow)  
f RomyFrowTravelCounsellors

**TIM PHILLIPS & Co.**  
Accountants  
Established 1991

Independent, specialist service for:  
**Small Business • Self Assessment  
Personal Taxation**

Free initial consultation - no obligation  
**EASY, FREE PARKING**

Copley Hill Business Park, Cambridge Rd., Babraham  
Off A1307 between Wandlebury and Babraham  
**Tel: 01223 830044.** [www.tpaccounts.co.uk](http://www.tpaccounts.co.uk)

**Pest Right Pest Control**

ants	fleas	rabbits
bedbugs	flies	rats
bees	foxes	silverfish
carpet beetle	mice	spiders
cluster flies	moles	squirrels
cockroach	moths	wasps
earwigs	pigeons	

Based in Linton, call Mark or Carolyn on 01223 897982 or 0845 4682412 or 0777 620 4483 For a discreet professional insured service

RESIDENTIAL • COMMERCIAL • AGRICULTURAL • INDUSTRIAL

**Linton Complementary Health Centre**

2B Bartlow Road, Linton, CB21 4LY

- Acupuncture
- Shiatsu
- Massage
- Food Intolerance Testing

Telephone: 01223 891145  
Email: [enquiries@lintonhealth.co.uk](mailto:enquiries@lintonhealth.co.uk)

# News from the Linton Gardening Club and photographs of the first signs of Spring



Spring daffodils

At the Club's January meeting, Philip Darke gave a really interesting talk on Camgrain which is a cooperative of around 550 member farmers. He explained the company's role in the food supply chain, how it has been affected by climate change and the steps Camgrain is taking to reduce its impact on the environment.

We have driven past Camgrain's Linton site many times and it was fascinating to find out what is stored in the large silver silos on this and the other Camgrain sites, and in which familiar products the grain is used.



Heuchera

Late last autumn, vine weevil grubs got into a heuchera pot and ate so many of the roots that the wilting leaves just lifted away from the soil when pulled lightly. Heucheras have fleshy leaf stems so after separating and washing, I dipped them in rooting powder and popped them into modules containing fresh cutting compost. I put them on a cool windowsill in the kitchen and somewhat surprisingly, a fair proportion of the cuttings are now thriving plantlets.

If life gives you lemons, make lemonade.

The talk at the Club's meeting at 7.30pm on Tuesday 8<sup>th</sup> February in the Village Hall will be 'Grow your Own Fruit and Vegetables' by Peter Jackson, an expert plantsman and a great presenter.

## A warm welcome at the Child & Family Centre



HAPPY New Year from South Cambridgeshire Child and Family Centres. We have an outreach venue based at the Cathodeon Centre Linton as part of South Cambridgeshire Child and Family centres. We are a service to support families with children aged 0-19 years old. We hold different groups ranging from baby groups to Stay and Play groups for those who are 10mths - 5 years. Within these groups we have age-appropriate activities, and they are run by a Child and Family Centre Worker who will be on hand to give any support or advice if you need it. All groups are bookable as we are still restricting numbers, so please get in touch to book a place in our groups; details are below.

There are parenting courses available as well: they cover a range of things, e.g. courses for parents/carers who have children with additional needs, or for parents who may need support with behaviour issues.

If you would like more information, please do get in touch. Our Linton groups run on a Thursday. To contact us you can go to our Facebook page 'South Cambridgeshire Child and Family Centre' and send us a message or email on [childandfamilycentre.south@cambridgeshire.gov.uk](mailto:childandfamilycentre.south@cambridgeshire.gov.uk), or even call us on 01954 284672. We look forward to seeing you all soon.

Emma Chipps



Blue Crocus

Everyone is welcome to come along. Annual membership for the Club is £10 and the visitor's fee is £2 per meeting.

Jim and Helen, Linton Garden Club,  
[lgsecretary@yahoo.co.uk](mailto:lgsecretary@yahoo.co.uk), tel. 893577

## 2523 Linton Air cadets

WE have kick-started the new year with several new achievements. Our cadet Non-Commissioned Officers have had a chance to attend their senior and junior NCO courses. Sergeant Tysoe completed the course and has been awarded his silver leadership badge (pictured below)



Corporal Vellacott was on the JNCO course: "I enjoyed my JNCO course on RAF Henlow where I learned invaluable skills in drill, leadership and RAF knowledge in order to better help others on their Air Cadet journey."

The squadron civilian committee is responsible for all our fundraising, and has now reached its long-term funding objective, to purchase the squadron a top-of-the-range flight simulator. As well as years of fundraising, the equipment supplier Sim2Do have very generously sponsored some items on the simulator.



The new flight simulator

This new piece of equipment will help in all aspects of aviation studies, bringing subjects such as principles of flight, pilot navigation, and flying and handling techniques to life on the squadron.

We are due delivery soon, and cannot wait to make the most of this top-of-the-range equipment. Along with the recently purchased drone technology, the squadron is now well positioned to provide even more comprehensive local based aviation training to our cadets.

We look forward to hosting the annual ATC Sunday parade through the village on Sunday 6<sup>th</sup> February. We also have shooting and powered flying allocated for the coming weeks: as always, a busy start to the year.

Bradley Wright  
Pilot Officer RAFAC  
[training.2523@rafac.mod.gov.uk](mailto:training.2523@rafac.mod.gov.uk)  
07943 873272

**MALLYON & DONALDSON**  
MASTERS OF MODERN AND TRADITIONAL BUILDING

[contact@mallyondonaldson.com](mailto:contact@mallyondonaldson.com)  
01223 290030  
07885 367112

Extensions - Alterations - Repairs - Hard Landscaping

YOU BEAUTY  
CAMBRIDGE

YOUR LOCAL  
BEAUTY SALON

Check us out at  
5 Balsham Road, Linton  
Cambridge CB21 4LD  
[youbeautycambridge.co.uk](http://youbeautycambridge.co.uk)  
01223 668400

Cambridge  
Art Makers

A friendly and inspiring  
workshop and studio.  
Expert tutors offering a  
diverse array of dynamic,  
engaging creative courses.

**AM**

Make time for Making!  
Claim your creativity it's  
good for you!

6 Lintech Court, Linton  
[www.cambridgemakers.org](http://www.cambridgemakers.org)

**Linton**

07958 657300  
[lintoncabs@btinternet.com](mailto:lintoncabs@btinternet.com)

Linton Cabs  
Private Hire for: Airports / Train Stations /  
Local Travel

**Martin French**

**LINTON VILLAGE MOTORS**  
(situated in Great Abington opposite Granta Park)  
[www.lintonvillagemotors.co.uk](http://www.lintonvillagemotors.co.uk)

Tel: 01223 830550

- MOT testing
- All makes of vehicles serviced and repaired
- Tyres at competitive prices
- courtesy car provided
- Polite and friendly staff

Mon-Fri: 8.30am-5.30pm Sat: 8.30am-12.30pm

**McKenzie & Haywards  
Garage LTD**

MOT by appointment while you wait  
Servicing, Collection & Delivery Service

Unit 3 & 4, Lintech Court  
The Grip Industrial Estate  
Linton, Cambs  
CB21 4XN

Tel : 01223 894140  
Fax : 01223 890035  
[mhgarage@btconnect.com](mailto:mhgarage@btconnect.com)

**PJB  
Maintenance**

No job too small  
Ground work, Patios, Floor  
& Wall Tiling, Fencing, Roof  
repairs, Demolition  
CPSC Licence  
Free Estimates

Call **Peter Belson** on  
Mob: 07799 183308  
Tel: 01223 668475

**MOPS HAIR SALON**

**HAIR BY JO DENNY**  
WOMEN | MEN | CHILDREN  
CUTTING & COLOURING

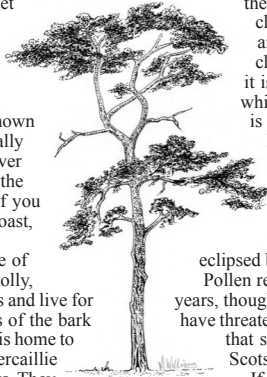
41 LINTON HIGH STREET  
(BEHIND BOSWELL'S BAKERY)  
t: 01223 893 285



**COUNTRY MATTERS**  
Text by Oriel O'Loughlin, illustrations by Maureen Williams

# The many uses of the Scots Pine

WEIRDLY, one of my favourite trees is in the central reservation of the A14 just before you get to Bury. It is one of four Scots pines which appear to have somehow escaped the chop. It is the double one, with only one half still growing, the other sawn off at about six feet from the ground in a most artistic manner, and now whitening. *Pinus Sylvestris*, also known as Baltic Pine or European Red Pine, is actually the national tree of Scotland, but they are all over East Anglia too. If you go north up through the fertile fens, you don't see a single one, but if you go east to the Brecks and the sandy infertile coast, there they are in their thousands.



The bark develops plates and fissures as it ages. In the past it was used for ships' masts, turpentine and charcoal. Down the Spey floated logs for our planks and roofs. Now it is used for pit props, furniture, chipboard, telegraph poles and paper pulp. Although it is a softwood, it is one of the strongest, a creamy white, and easily workable. The best quality wood is from the slower growing Scandinavian trees, but here, like birch, the fact that it grows so fast means it is very useful for windbreaks and land regeneration. It supports a massive 172 insect species, and its ability to thrive in very poor soils gives it valued pioneer status. In the USA it was used for Christmas trees from the 1950s to 1980s, now eclipsed by the Douglas Fir.

Scots pine is our only native pine, and one of only five native evergreens, the others being holly, box, yew and juniper. It can grow to 35 metres and live for around 300 years in the UK. It is the redness of the bark which makes it easy to identify. In Scotland it is home to red squirrels, crossbills, wildcat and even capercaillie – round here there is probably a selection of tits. They usually have long bare and straight trunks, topped by rounded or flat foliage, with few lower branches.

Pollen records show that it has been here for thousands of years, though over-felling, and overgrazing by sheep and deer have threatened it over the years. Now finally we have learned that sheep and deer have to be controlled. Bring back Scots Pine.

If you fancy one in your garden, Barchams in Ely can sell you quite a tall one for £224, or £154 if you buy ten at once....

## Sad/happy news at Linton Heights

CHRISTMAS 2021 marked the end of an era with our brilliant Class 5 teacher, Kirsty Webb leaving Linton Heights Junior School.

Kirsty had been at Linton Heights since completing her teacher training with us in the summer of 2018 and she will be sorely missed by pupils and staff alike. She has secured a position at the Churchill School in Haverhill and we wish her every success at her new school. To replace her I am delighted to announce that we have recruited Miss Ella Kent who comes to us with a wealth of experience. Ella writes:

I have been a teacher for 4 years and love working with children. I previously worked at Burwell Village

College Primary School in Key Stage One and was ready for a change. Whilst I enjoyed teaching Key Stage One, Key Stage Two is where my passion is. Quite simply, I am motivated by the children's amazing ideas and perspectives.

I love to teach but I also love to learn. Linton Heights Junior School provides a friendly and supportive environment which enables both children and staff to flourish. The values of the school also underpin my ethos of education. Since starting at the school, I have been overwhelmed by the kindness of the staff, children and parents. I am really excited to be continuing my journey within this community.

James Puxley

## At last! A school trip for the Infant School

AS I write this, although it is cold, the sun is shining and the sky is blue. What a lovely day, and although snow may still yet come (it is only the beginning of January after all,) it won't be long until Spring arrives. I have already noticed the days are getting slightly longer.

We have a school trip planned: the first trip since the pandemic started in March 2020. For all children, these trips off-site form such a valuable part of their education. Although we have worked hard to extend the opportunities and experiences we offer in school, by the building of the Wildlife Area and Pond Area, there is no substitute for leaving the school premises and experiencing first hand a museum, the seaside, the theatre and the exciting coach trip with all of your friends. Fingers crossed we are still able to go and I will let you know how it went next month.

The Admissions window for those children due to start with us in September 2022 has now closed, and offers of places will be made on 19<sup>th</sup> April 2022. Any applications received after the deadline will not be processed until 19<sup>th</sup> May 2022.

We are thrilled to have been selected as one of the Co-op beneficiaries from their local community scheme. It would be great if as many of you as possible could support us.

<https://membership.coop.co.uk/causes/61994>

Kelly Harries  
Headteacher

## Camsight Linton VIPs - the Cambridge charity for visually impaired people of all ages

Despite starting the year with some delightful spring sunshine (in between the usual winter days) we were very sorry to have to postpone our meetings in December and January - especially sad to miss our Christmas lunch - but it was considered too much of a risk with the high Covid numbers being reported. We delivered Christmas gifts from our group and keep in regular telephone contact with our members, and having had talks with our Camsight manager are hoping to meet in March. Meanwhile our members can also contact our

volunteers personally at any time. The situation is of course unpredictable but we are optimistic and very much looking forward to getting together again.

The Camsight services are still available in terms of befriending, information, advice and resources, and if you or anyone you know would like further details, please contact us either through the Cambridge office, 420033 or on the number below.

Jean Mannion  
893595

## POT POURRI 200

### Can it get to carbon neutral?

HEARD on the radio, a certain European country stated that by 2043 there would be no carbon generated power stations. If this criterion is to be met at a constant fixed percentage every year from 2022, what is the percentage value needed to achieve below 1% carbon emissions from the power stations today?

Hint - It is not the obvious!

### Pot Pourri 199 - Mathematic Irritation

The article number lists the number of letters in the name of months. Hence, hardly mathematical.

The next number in the sequence is 3. The vowels in the months i.e. September.

## ScarWorker and Biodynamic Massage Therapist

07594754332

Laura.biodynamic@gmail.com

www.biodynamicmassage.co.uk

- Improves the health and functionality of your scars
- Supports healing and recovery
- Gentle soft tissue approach that eases adhesions, fibrosis, restriction of movement
- Reduces pain, tenderness, and numbness
- Helps scars of any age and size
- Effective with internal and external scars
- Individual sessions that help ease the aches and pains linked to stress and anxiety, fear, frustration and stuckness
- Reduces headaches, sleep and digestive issues
- Helps manage chronic pain, fibromyalgia, and other long term issues
- Increases body confidence, wellbeing and energy
- Oncology trained



Please get in touch if you would like more information



## Linton Sports Centre

Gym  
Tennis Courts  
3G Pitch  
Grass Pitches  
Sports Hall  
New Gym  
Dance Studio  
Cricket Lanes

01223 890248

## Art is the Flower

Charles Rennie Mackintosh

13<sup>th</sup> January – 26<sup>th</sup> February 2022  
Opening hours 10:00 – 5:00  
Wednesdays, Thursdays, Fridays,  
Saturdays or by appointment



94 High Street, Linton, Cambridgeshire CB21 4JT www.galleryabove.co.uk  
T: 01223 894899 M: 07909981287 E: info@galleryabove.co.uk

## A J Pest Control Ltd

Local Professional Service  
Member of NPTA  
Domestic/Commercial/Agricultural  
Experts in all areas of pest control



Mice, Rats, Wasps, Bees, Hornets, Moles, Moths, Ants,  
Bed Bugs, Fleas, Flies, Squirrels, Birds, Woodworm.

Tel: 01799 542 505 Mobile: 07855478824  
E-mail: info@ajpestcontrol.com www.ajpestcontrol.co.uk

## LZD DESIGN

Graphic designer & mixed media artist  
david@lzd.design  
07743 598 544  
logos, ads, web, print



## tidyaway

Professional Decluttering  
and Organising Service

Do you need to create more space?

Do your wardrobes or cupboards  
need organising?

I can help in all areas of the home

Contact Andrea  
07534 301978  
www.tidyaway.co.uk

## WHAT'S ON

High Street  
Linton  
CB21 4JT



### February..

Wednesday 9 <sup>th</sup>	Rock 'n' Roll Bingo	7:30pm
Saturday 12 <sup>th</sup>	Karaoke	8pm
Wednesday 23 <sup>rd</sup>	Quiz	7:30pm
Saturday 26 <sup>th</sup>	Live music – Rachael Brookes	8pm

We will be showing the Six Nations Rugby  
5<sup>th</sup> February to 19<sup>th</sup> March

Tuesday - Sunday Happy Kebab Burger van from 6pm

## LINTON PAVING COMPANY

YOUR LOCAL LANDSCAPING  
BLOCK PAVING & PATIO  
SPECIALIST.  
PROPERTY MAINTENANCE  
Int/Ext Painting, General Repairs  
FRIENDLY SERVICE.  
FREE QUOTATIONS  
Tel: Andre Jacobs

Mob: 07765 594398  
Office: 01440 702498



## Neil Claxton

Painting & Decorating  
Interior/Exterior  
Rooms Emulsioned  
from £120

FREE ESTIMATES

Tel: 01223 893487  
Mobile: 07724073045

E-mail: n.claxton925@btinternet.com

## ProClean

'Your Complete Cleaning Solution'

- \*Carpet Cleaning \*Rugs \*Stain Removal
- \*Car Valeting \*Caravans \*Motor Homes
- \*Upholstery Cleaning \*Stain Protection
- \*Floor Cleaning / Scrubbing / Sealing / Polishing
- \*Pressure Washing of Patios Paths & Driveways
- \*Domestic Cleaning \* Top Ups & One Off Cleaning
- \*Gutter / Fascia Cleaning

\*Contract Office Cleaning (Flexible Options)

TEL: 890433 Mob: 0777 375 8355  
74 Bartlow Rd, Linton, Cambridge, CB21 4LY

## De-Salis Wealth Management

Associate Partner Practice of St. James's Place Wealth Management

SPECIALIST ADVICE ON

Personal Financial Planning – Pension Planning  
Investment Planning – Protection Planning

Ian Cross DipPFS

01223 892821

E-mail: ian.cross@sjpg.co.uk Website: www.de-saliswealth.co.uk

De-Salis House, 6 Hillway, Linton, Cambridge, CB21 4JE

The Partner Practice is an Appointed Representative of and represents only St. James's Place Wealth Management plc (which is authorised and regulated by the Financial Conduct Authority) for the purpose of advising solely on the group's wealth management products and services, more details of which are set out on the group's website www.sjpg.co.uk/products. The 'St. James's Place Partnership' and the titles 'Partner' and 'Partner Practice' are marketing terms used to describe St. James's Place representatives

# District and County Councillors' Report

## January 2022

### Covid Booster vaccinations

There are several walk-in clinics around the county where booster jabs may be had on the day. A warning though, queues have been notoriously long so far, so expect a wait. Details here: [www.thevaccinators.co.uk/](http://www.thevaccinators.co.uk/)

### Innovate and Cultivate Fund

The *Innovate and Cultivate Fund*, offered by the County Council, is open for another round of funding. Full criteria and applications can be found here: <https://www.cambridgeshire.gov.uk/council/communities-localism/innovate-and-cultivate-fund>. The essence of the fund is to enable schemes that take the pressure off the County Council by funding services that they have a responsibility to provide. This current round of bidding closes on February 1<sup>st</sup>.

### Community Chest Fund

This existing fund is opening a new round of bidding, with some good news: the amount groups are able to bid for has doubled from £1,000 to £2,000 per group.

Full criteria and applications can be found at: <https://www.scams.gov.uk/community-safety-and-health/grants/community-chest-grants/>

### Household Support Fund

There is a support fund available from the County Council aimed at supporting families with a below average income through the more difficult winter months.

There is a fair amount of money in the pot at the moment and the fund will remain open until March 2022. Eligibility criteria and application form can be found here: <https://www.cambridgeshire.gov.uk/residents/coronavirus/household-support-fund>

### Flood Risk Management Strategy

The County Council, who in most cases have responsibility for the management of flooding, have published an updated version of their risk management strategy. [www.consultcamb.org.uk/engagementhq/cambridgeshire-flood-risk-management-strategy](http://www.consultcamb.org.uk/engagementhq/cambridgeshire-flood-risk-management-strategy) - quite pertinent at the moment, given the amount of heavy rainfall we have had over the last year.

### Sad News

We were extremely saddened to hear the news that Enid Bald, of Linton Parish Council, passed away over the holiday period. She was an excellent, dedicated councillor and a real asset to the village. She leaves a large hole to be filled in the community, and our thoughts are with her husband John and their family.

District Council – John Batchelor  
[johnbatchelor23@gmail.com](mailto:johnbatchelor23@gmail.com)

District and County Council - Henry Batchelor  
[henrybatchelor89@gmail.com](mailto:henrybatchelor89@gmail.com)



Pupils having fun and learning new skills

## Out and about

STUDENTS of Granta School have enjoyed getting back out and about in the community over the past term. A core part of our school curriculum is developing life skills for all pupils and a key element of this learning is community trips to practise Communication, Reading and Maths in real life contexts. We create opportunities for children to read signs, use maps and follow directions, use money to make purchases, choose library books, speak to others to gain information and order items, and along the way we practise road safety and early independent travel skills. If your place of work is able to provide opportunities for our students to visit you and use your facilities, or for some of our older students to speak to your staff about their roles in the workplace and what it involves, we would love to hear from you. Our Life Skills Leader is Eva and she can be contacted via our school office on 01223 896890.

Ruchi Datta  
Headteacher  
Granta School

## PLANNING APPLICATIONS

Two storey side extension and conversion of garage and studio into new dwelling  
24 Back Road Linton CB21 4JF  
Ref. No: 22/00135/FUL | Validated: Thu 13 Jan 2022 | Status: Awaiting decision

Two storey rear and single store side extension.  
39 Bartlow Road Linton Cambridge Cambridgeshire CB21 4LY  
Ref. No: 22/00110/HFUL | Validated: Wed 12 Jan 2022 | Status: Awaiting decision

Replacement shop door and repainting shopfront and installation of secondary double glazing inside shop front and first floor dormer window. Replacement of rear external door. Re-rendering external walls over existing pebbledash with wood float finished lime render with bell cast drip and replacement gable weatherboard. Application of render finish to fletton brickwork to rear single storey external walls. Installation of improved ventilation with inlet grille and weathered extract through rear roof slope. Insulation value of external walls improved by installing blown fibre into the cavity behind the internal linings and external laths and make good internally as required. Open for comment icon  
61A High Street Linton Cambridge Cambridgeshire CB21 4HS  
Ref. No: 21/05697/LBC | Validated: Mon 17 Jan 2022 | Status: Awaiting decision

**A & R**  
**PLASTERING**  
All aspects of plastering undertaken:  
Plasterboarding  
Rendering  
No job too small  
30+ years experience  
Free estimates  
Tel: 01223890228  
Mobile: 0774 8627920

**DESIGNER DRAPES**  
Local Curtain & Blind Specialist  
[www.designerdrapes.co.uk](http://www.designerdrapes.co.uk)  
[designerdrapes2@gmail.com](mailto:designerdrapes2@gmail.com)  
01223 890556

**Allstar Cleaning Ltd .me.uk**  
Your Local, Professional, Carpet and Upholstery Technician Dean  
16 years' experience  
Package to suit every level: Basic, Pet Treatment or Carpet Protector  
**Carpet moth removal and prevention**  
Upholstery and rug cleaning services  
Contact Dean on 01223 654652 or [info@allstarcleaning.me.uk](mailto:info@allstarcleaning.me.uk) to make an appointment.  
Allstar Cleaning, 14 Hillway, Linton, CB21 4JE

[dogandducklinton@gmail.com](mailto:dogandducklinton@gmail.com) 01223 890349  
**The Dog & Duck**  
63 High St, Linton  
Restaurant & pub with real ales, fine wines & log fires  
[www.dogandduck-linton.co.uk](http://www.dogandduck-linton.co.uk)

**ClearTax & ACCOUNTING LTD**  
Quality, friendly accounting services and taxation advice.  
Sole trader and small company specialist.  
Free initial consultation  
Unit 5, Lintech Court,  
The Grip Industrial Estate, Linton.  
t: 01223 772326  
e: [janine@cleartax.co.uk](mailto:janine@cleartax.co.uk)  
[www.cleartax.co.uk](http://www.cleartax.co.uk)

**Westlakes**  
Painting & Decorating  
Les Westlake  
(exterior only)  
07929 501101  
**Adam Westlake**  
Interior and exterior  
07917 890752

**PSH**  
**Electrical Services**  
Rewires, New builds, Extra lights, Extra sockets, Repair works, Garden lighting, Showers  
Registered NIC EIC domestic installer  
email  
[pshelectrical27@gmail.com](mailto:pshelectrical27@gmail.com)  
telephone 07867980738

**CHRISTOPHER MARKHAM**  
HOME & GARDEN SERVICES  
Interior/Exterior Decorating  
Fencing, Guttering  
Turving, Garden Clearance  
Lawn & Hedge Cutting  
Decking & Patio Cleaning  
Patios & Driveways  
Call on  
(01223) 892889  
or 07973 294946  
No job too small...

**PALMER & SON**  
**SCAFFOLDING LTD**  
A local family run business with over 30 years' experience in the trade.  
All enquiries welcome with a free quotation on all jobs.  
All aspects of scaffold undertaken; no job too small.  
Contact Martin on:  
Tel: 01223 892145  
Mobile: 07970348182  
[palmersscuffolding@outlook.com](mailto:palmersscuffolding@outlook.com)

**GARDENER**  
N.C.H. QUALIFIED  
All garden maintenance including:  
Weeding – Mowing  
Hedge cutting – Turfing  
Garden clearance  
Shed / fence treatment  
Hard/soft landscaping  
For a friendly professional service please call:  
**Darryl Tilling**  
**01223 892133**  
or  
**07932 021277**

## In memory of Enid Bald ...a truly extraordinary person and defender of Linton.

THERE is probably no such thing as an ordinary person, but some people are truly extraordinary. Enid was one of these people. From the beginning of her life, when the midwife took her out into the garden to see the snowdrops, Enid met the world with a smile. During her years in that unsmiling country, Saudi Arabia, she became known to local people as Sister Smile, and they would often refuse payment for fruit or vegetables out of appreciation. When I said goodbye to her for the last time, she said "I don't know where I'll see you again," and smiled.

Enid was born in the small mining village of Ryhope, on the Durham coast. Her early life was made difficult by a violent father who abused and almost killed her mother. When they left him, Enid was ten and had saved enough money from her work delivering milk and eggs, and retraining ponies that had been ill-treated, to pay almost the whole cost of the house that became their refuge.

Always brilliant at school, she attended Robert Richardson Grammar School – named after the local miners' leader – with opera star Sir Thomas Allen - whose music she enjoyed throughout her life. Difficulty came again when the school became comprehensive, with a hyper-progressive headmaster who caused most of the academic staff to depart, and who left her and her class to do A level physics on their own, with no teacher (he was a qualified physics teacher himself). Somehow, she passed and went to study biological sciences at the University of East Anglia, later becoming a Fellow of the Institute of Biomedical Sciences.

Enid's lifelong commitment to science and to scientific research, sustained during her final illness as a willing participant in numerous clinical trials, allowed her to work with leading practitioners across the country, and the more able and conscientious her research partners, the better she liked it.

In the early years of her career, she met levels of discrimination that are now almost unheard of, being told she could not be promoted as men needed the extra money for their families. Enid's response was to answer an advertisement to work in Saudi Arabia, where she set up and managed laboratory facilities for three major hospitals, taking great care of the welfare of her staff, who were often badly treated by the Saudi authorities, and on one occasion being shot at by palace police for daring to attend the Majlis to insist that they receive their wages. Fortunately, they were not very good shots, and only grazed her arm. Her employer's parting comment, "Thank you for a job well done" could apply to everything in her life.



Photograph courtesy of John Bald

On her return, Enid worked on several innovative drugs, which extended life chances for people with brain tumours, melanoma, prostate and other cancers. Her meticulous and energetic approach often saved studies that had run into trouble.

We moved to Linton at Christmas, 1995, and she soon began to apply these qualities for the benefit of the Parish Council, where she served as Chairman (twice), Vice-Chairman, and Chairman of Planning. Her determination to do everything possible to promote building that would meet people's real needs, while fighting tooth and nail against anti-social and hazardous profiteering on the part of developers, has become well-known in and beyond the village.

She was also responsible for many constructive developments, including dropped kerbs for disabled people, paths to enable older people to use the recreation ground, flood protection and, perhaps most importantly, the charity Activities and Care for Elders, which has enabled many people to continue to live in their own homes as long as possible, as well as taking them out on excursions across East Anglia.

My wife Enid was a friend, servant and defender of Linton. We owe her much. Her final words to me were "I have so much to do." Now that she can do no more, it is up to us to carry on.

John Bald

## Understanding Precept funding for the parish in 2022-2023

THE PARISH Council has many responsibilities, including maintaining and developing the recreation ground, public areas and cemetery, looking after buildings, bins, benches, streetlights, keeping streets clean, dealing with planning applications, and road signage. Keeping this work going, while observing government guidelines on reserves, so that we do not, like some councils, find ourselves unable to meet our commitments, is difficult. It is also worth noting that central government, the County Council and District Council continue to relinquish additional responsibilities to the Parish Council, an example being street lighting, which is estimated to cost £10,000 this forthcoming year alone.

This past year, the Parish Council has worked hard on improvement projects on your behalf. Litter bins were installed in Leadwell Meadows, Horn Lane, Stantons Lane, The Recreation Ground and Camping Close. Many of these are dual purpose to help tackle the issue of dog mess. A new dog litter bin was installed near the BT Telephone Exchange on Back Road, an ideal location for dog walkers using the public rights of access path up to the Water Tower. Several benches have been installed, including two memorial benches within the cemetery and a bench with access for wheelchairs at the Recreation Ground as part of the inclusivity project. We are still working on improving benches for the High Street.

Many trees have been planted, the hedgerow surrounding the fire station repacked, and thousands of bulbs have been planted around the village with the help of Cambridge Rutherford Rotary Club. Major work has been carried out on renewing ditches as part of the flood prevention works. Two key projects have been the installation of many new pieces of equipment in the Recreation Ground play area and completion of the multi-use Skate Park. These were completed as the first stages in the playground rejuvenation project. All of these projects, and the delivery of essential services, were financed by our precept and reserves built up over years, without incurring debt.

Linton Parish Council kept precept increases below one per cent for the past two years. The current high inflation rate, and the cost of utilities, with the additional costs imposed on us by other authorities, mean that this cannot continue. So, for 2022-23, the Council has decided that we need to raise £227,903.33 from the precept. This will give a Band D property equivalent of £128.19 per annum, or £2.47 per week.

**What will the precept be used for?** The precept this year will allow for Council to deliver basic services, and continue with projects such as the maintenance and management of the allotments (once completed), Speedwatch, works on the River Granta, required tree works for health and safety purposes, improvements to the cemetery- including repairs to the railings and additional maintenance contracts. Flood prevention work following the surface water flooding in 2021 will also be undertaken. We have many new bins, dog litter bins and benches to still be installed, as well as CCTV and flood lighting for safety and security on the Recreation Ground. This funding also allows for the Parish Council to provide vital support to local groups, clubs and organisations to ensure they can continue to provide services and activities to parishioners, as well as supporting a comprehensive youth program within the Parish and contributing to Activities and Care for Elders. A priority project this year will be the development of the old bowls green, which is one of the final stages in the rejuvenation of the Recreation Ground. A survey was distributed in last month's copy of Linton News (also available on the parish council website) to allow you to have your say. The Parish Council looks forward to a busy and productive year and are privileged to represent the parish of Linton. We will continue to maintain and improve our extraordinary village with your support. **Linton Parish Council**

## Parish Progress

FOLLOWING the Christmas break the team is back and raring to go for 2022. Thank you to parishioners who kindly volunteered to plant young hedge whips around the Fire Station and bulbs in numerous locations in the village. It was a cold, wet month to be out planting and all help is much appreciated. The replacement bins are now in place on the Recreation Ground and various projects are underway. You may have spotted that a mobile speed indicator unit has appeared in Coles Lane. The office is currently trialling this equipment and once we are confident with the software it will be moved to various locations in the village. The data collected will provide vital information to the Speedwatch Team and the Traffic Working Group. Proof of hot spots in the village and will be passed to the Cambridgeshire Police. More information will be shared in next month's issue of the Linton News. **Clerk.**

## Dates for your Diary

THE NEXT meeting of the Linton Parish Council will take place on Thursday 17th February 2022. The meeting will take place at the Cathodeon Centre. Members of the public and press are welcome to attend. If you would like to address the Parish Council but are unable to attend the meeting, please contact the office for further guidance.

Looking forward a little, the Annual Meeting of the Parish is scheduled to take place on Thursday 7th April 2022, at the Linton Village Hall. We would like to encourage parishioners to attend and welcome organisations who have received and applied for funding to give a short report about their work in the community.

This is an ideal opportunity for everyone to get together and plan for the future. If you would like to participate please contact the office. **Clerk.**

**COOPER BARNES**  
AUTOMOTIVE

Family run body shop at the Grip, with over 40 years experience in the motor trade

Body Repairs, Accident damage Repairs, Servicing, MOT's Alloy Refurbs & Air-Con Servicing Manufacturer and Insurance approved

2, The Grip Ind Est., Hadstock Road, Linton, Cambridge CB21 4XN  
01223 880603  
repairs@cooperbarnes.co.uk

[www.cooperbarnes.co.uk](http://www.cooperbarnes.co.uk)

- 24 hour emergency service
- Boiler breakdown and servicing
- Boiler upgrade

**KA PLUMBING & HEATING**

Office: 01223 890554  
Mobile: 07890 576608  
kaplumbingheating@hotmail.co.uk

**Vaillant**  
Approved Installer

**EDWARD'S GARDEN'S**

Garden maintenance, restoration, clearance, etc.  
Free initial advice

07768701010  
edwardsgarden84@gmail.com

**LINTON TANDOORI**  
Restaurant & Takeaway

Open 7 Days  
5PM - 10PM

6-8 Bartlow Road,  
Linton, CB21 4LU

01223 893663  
01223 890030

[www.linton-tandoori.com](http://www.linton-tandoori.com)

**The Darryl Nantais Gallery**  
Proprietor: Darryl Nantais  
Fine Art, Framing & Restoration

We offer a wide selection of artwork, contemporary & traditional, local & international, including paintings, prints, ceramics, glassware, sculptures & jewellery. The Gallery also offers bespoke framing, picture restoration and cleaning.

Darryl Nantais Peter Carr Magdalena Morey

Established in Linton in 2001 and in Auchterarder, Perthshire in 2019 as DNG Contemporary Art. We also exhibit across the country at Art Fairs as Linton59. A warm welcome is guaranteed wherever you find us.

59 High Street, Linton, Cambridge CB21 4HS ~ 01223 891289 ~ linton59.co.uk  
For regular news updates follow & like us on Facebook & Instagram  
Tuesday to Saturday, 10am to 4pm

**G. DYE & SONS**  
GENERAL BUILDERS,  
GROUNDWORK & MAINTENANCE,  
CONSERVATORIES & UPVC WINDOWS, KITCHEN & BATHROOM REITS

ALSO INTERIOR & EXTERIOR DECORATING  
REFERENCES AVAILABLE

For enquiries please call  
Mobile: 07961 342887  
Tel: 01223 892089  
georgedye738@btconnect.com

Free Estimates

**Bentens**

Accountants and Tax Advisors

Abbey House, 51 High Street  
Saffron Walden

01799 523053 [www.bentens.co.uk](http://www.bentens.co.uk)

ABBREVIATED minutes of the Meeting of Linton Parish Council held on Thursday 9th December 2021 at the Cathodeon Centre. **Apologies for Absence.** Cllr Sharron Parker. County & District Councillor Henry Batchelor.

### Chairman's Comment.

The Chairman wished everyone a Merry Christmas. Also noted that it was a shame that the Linton Kitchen was unable to hold the Christmas Fayre on the Market Square on 11th December 2021 and suggested it was put on social media with reference to parking at Linton Village College and Coles Lane, to show that the Linton Parish Council (LPC) are in support of the event.

The Chairman requested that item 219/21/22 be moved up the agenda to allow for early discussion.

Cllr John Bald spoke of working with the Responsible Financial Officer and advised that a request for further information had been sent to the Beacon Youth Trust (BYT), particularly in relation to contracts, hours worked in the village. The BYT had been informed that LPC was happy to arrange a meeting once the responses were received, which was expected to be in the New Year. It was noted that LPC need to ensure that funding to BYT is to support the youth in Linton.

### Matters Arising/Clerks Report.

Update on the application for double yellow lines in Symonds Lane. The Clerk updated the Parish Council that a request for information had been sent to the Highways Officer at Cambridgeshire County Council (CCC). He had advised that further information was required on the procedure for the application, it was mentioned that this may need to go to public consultation but not confirmed. The Clerk would follow up the request.

Update on the Mobile Speed Indicator Device (MSID) installation. The Clerk updated the Full Council that the brackets have been installed for the MSID unit. The software required to use the MSID was being sought and may need to run on an android tablet. The office had attempted to locate software for use on the office computer, but this was not available. As soon as the software is available the office will start the trial of the MSID in Coles Lane.

Update on the leak at Chalklands Community Centre causing water logging in the Cemetery. The Clerk updated the Parish Council that the leak at the Chalklands Community Centre was still not resolved. The rear of the Cemetery and an adjacent garden were still badly affected. The Clerk continues to be in frequent communication with SCDC and the contractor to resolve the issue as quickly as possible.

Update on drain clearing programme.

The Clerk updated the Parish Council that the CCC Highways Officer had sent an updated list of the drains still to be cleared in the village following the floods in July 2021. The work was due to be completed by mid-October and several areas had still not been addressed. The Clerk has emailed the CCC Highways Maintenance Manger, and has been supported by the County & District Councillor on this matter and will continue to push for the work to be completed without further delay.

### Consideration of the District and County Councillors Report for December 2021.

District Councillors John Batchelor spoke of concerns over rising cases of Covid-19 with South Cambridgeshire reporting 600 per 100,000. At the current levels of transmission, it could potentially rise to 2500 per 100,000 very quickly. He stated that Addenbrookes hospital was at capacity and that 50% of cases were in the under 15 age group, who were unvaccinated.

He also informed the Parish Council that the Horseheath Road conditions on surface and foul water drainage would be discussed and decided by the SCDC Planning Committee on 19th January 2022, along with the planning application for the land adjacent to 35 Balsham Road.

### Planning Bartlow Road.

Update on the Bartlow Road development site. Ref S/2501/19/RM. Cllr Enid Bald gave an update that there are still outstanding conditions. There is an open OL application S/6073/19/OL. There is ongoing confusion as the surface water condition was refused at SCDC Planning Committee meeting, but the appeal was ap-

proved. It was noted that decisions on this scale and with such serious implications should not be made under delegated powers. Update from CCC regarding the lack of street lighting on Bartlow Road.

It was noted that the new lighting should not have been installed until permission had been granted. Until CCC adopt the lighting it remains the responsibility of the developer. The lack of lighting, and the safety risks to parishioners, have been communicated to CCC, SCDC and the developer from the Clerk in numerous emails. The Clerk was asked to send any further complaints through to CCC, SCDC and the developer as a serious Health & Safety issue. County & District Councillor Henry Batchelor has been supporting the LPC in trying to get the matter resolved.

**Horseheath Road.** Update on the land south of Wheatshaf Barn, Horseheath Road development site. Ref S/4418/19/RM.

Cllr Enid Bald updated the Council that following a meeting with Stephen Kelly, Joint Director of Planning at SCDC. LPC were advised that Croudace had submitted a new surface water scheme which did not address the issues. Responses to this had already been drafted by the Planning Committee.

### Finance

Consideration of the recommendation from the Finance Committee to transfer funds to the value of £65,000.00 from the Unity Trust Account to the Nationwide 35 Day Savings Account. Open Discussion and Decision Required.

Cllr Lee Gardner proposed that funds to the value of £65,000.00 be transferred from the Unity Trust Account to the Nationwide 35 Day Savings Account as recommended by the Finance Committee. Cllr Chris Hine seconded. All Agreed.

### Policies and Regulations

Consideration of the recommended changes from the Finance Committee to the current Financial Regulations and re-adoption. Cllr John Bald proposed that the recommended changes from the Finance Committee on the Financial Regulations be accepted and the Financial Regulations be re-adopted. Cllr Lee Gardner seconded. All Agreed.

Consideration of the recommended changes from the Policies & Procedures working group to the Social Media Policy and re-adoption. Cllr John Bald proposed that the Social Media Policy be re-adopted. Cllr Paul Poulter seconded. All Agreed.

Cllr Simon Hill left the meeting.

### Traffic & Highways

Update from Linton Speedwatch - Fact finding Session held on 24th November 2021. Cllr Kate Kell provided an update to the Full Council. The office was requested to send a letter to Highways to gain confirmation that the traffic calming measures (speed bumps) in Balsham Road are installed correctly.

Consideration for the movement of the white village boundary fences on Bartlow Road.

The office had alerted CCC to the movement of the village boundary signs. The Assistant Clerk updated the Full Council that correspondence had been received from Cambridgeshire County Council that the developer had been instructed to return the white village boundary gates to the original position immediately.

### Meadow Recreation Ground

Consideration to postpone the annual charges to the Sports Clubs, for use of the Recreation Ground, to coincide with the renewal of the Licence, planned for 1st May 2022.

Cllr John Bald proposed that the annual charge be postponed coinciding with the renewal of the licence, planned for 1st May 2022. Cllr Paul Poulter seconded. All Agreed.

Consideration of the replacement for the damaged White Beam near the Pavilion, previously discussed with The Linton Granta Football Club. Open Discussion and Decision Required.

Cllr Kate Kell reminded the Full Council that the agreement was that LPC would buy the replacement tree, and that the LGFC would reimburse the costs and maintain the tree. Cllr Enid Bald requested that this be deferred until a suitable location could be established once work on the Recreation Ground was complete. The Clerk was requested to inform the LGFC of the decision

made by the LPC.

Consideration to request that one of the Sports Clubs adopt the Black Poplar memorial tree recently planted on the Recreation Ground. Open Discussion and Decision Required.

The Clerk was requested to approach the Cricket Club to maintain the memorial tree especially during the warmer weather until it becomes established.

Consideration for the sales quote from Kompan regarding the resurfacing and future use of the Bowling Green.

Cllr John Bald offered to investigate Sports England for funding towards the project and the work would be required to go out to tender due to the costs involved. It was noted that the results from the questionnaire due to be collated by the first week in February would give clarity to the public wishes on the future use of the area and this would drive progression.

Consideration of the verbal request to use the Recreation Ground for parking on Sunday 15th May 2022 for the Open Garden event in conjunction with the National Garden Society.

Concerns were raised on the entry and exit route to the Recreation Ground and the adverse impact on Meadow Lane. Cllr John Bald proposed to allow parking on the Recreation Ground on Sunday 15th May 2022. Cllr Enid Bald seconded. 4 in favour, 5 against with 2 abstentions. Motion not carried.

### Cemetery

Review of the Cemetery Fees.

Cllr Chris Hine proposed that the Cemetery Fees be adopted as of 1st January 2022 and reviewed before the new financial year in April 2022. Cllr Kate Kell seconded. All Agreed. Cllr Enid Bald also requested that the Cemetery Regulations be reviewed at the same time.

### Churchyard

Consideration of requesting the gate on Church Lane entrance is kept closed due to reports of road safety concerns. Open Discussion and Response Required.

Cllr Brian Cox proposed to remove the tongue bar from the gate leading to the Linton Infants to enable the gate to be pushed open and prevent it latching. The Clerk was requested to contact the parishioner and contractor who had previously worked on the gate to discuss the same mechanism for the gate leading to Church Lane due to concerns raised of cyclists and children exiting the Churchyard without due diligence.

### River Granta

Cllr Enid Bald updated the Parish Council on the excellent work carried out in November by the FROGS with the support of Rob Mungovan from the Wild Trout Trust. Hinging of trees and installation of natural barriers to increase hydration would aid the health of the river. All parties to be commended for the work and encouraged to continue.

### Village Enhancement

Consideration for entering Linton into Best Kept Village for 2023. The Parish Council requested that the Clerk contact the resident and suggest a parishioner-led working group be formed. The Linton Parish Council would be happy to support a volunteer group. Full Minutes are available on the Parish Council website. Clerk.

The Village Hall, Coles Lane, Linton,  
 Cambridge CB21 4JS Tel: 891001  
**Clerk to the council – Mrs Jenny Seaward**  
**Email:** enquiries@linton-pc.gov.uk  
**Website:** www.lintoncambridgeshire-pc.gov.uk  
**Facebook:** www.facebook.com/lintonpc  
**Office open: Monday, Tuesday, Wednesday and Friday 9am – 12noon. Closed on a Thursday.**  
 Full Council meetings are held at the Cathodeon Centre, commencing at 7.30pm on the third Thursday of the month.

**McKenzie & Haywards Garage Ltd**  
**MOT by appointment while you wait**  
**Servicing, Collection & Delivery Service**

Unit 3 & 4, Lintech Court  
 The Grip Industrial Estate  
 Linton, Cambs  
 CB21 4XN

Tel : 01223 894140  
 Fax : 01223 890035  
 mhgarage@btconnect.com

**LINTON'S CRAFT BREWERY**

brewery fresh beer | food trucks | live music | good vibes

BREWERY  
 Grip Ind. Estate  
 Hadstock Road  
 Linton  
 CB21 4XN

TAPROOM  
 Weds - Sun  
 Check out  
 our events

SHOP & ONLINE  
 FREE LOCAL DELIVERY

thanks for supporting LOCAL

@wyldekybrewing | wyldekybrewing.com | 01223 778350

**KJL Roofing**

All roofing repairs, lead-work, renewal of pitched or flat roofs  
 New guttering, repairs/unblocking  
 Free estimates before any work commenced  
 25 years + Experience

Tel: 01223 892542  
 Mob: 07958 618440

**BRICK MARKETING**  
 Injecting power into your marketing

brick-marketing.co.uk  
 hello@brick-marketing.co.uk

**ADMIRAL ESTATES**

Residential Lettings and Property Management

- Local, Family Run, Business
- Fully Regulated, Compliant and Qualified
- Specialists: Cambridge, Linton & Local Villages
- 25 Years Experience

If You Prefer Great Service From A Good Local Business? Why Not Call Us?  
 Check Out Our Google Reviews: Cambridge Office or Our Local Linton Office.

Call us Now: **01223 891227**

**www.admiralestates.co.uk**

**CapriBlinds**

ALL TYPES OF BLINDS SUPPLIED AND FITTED  
 FREE QUOTATIONS  
 FREE HOME VISIT  
 07774 168833 TEXT ONLY

or email **colin@capriblinds.co.uk**  
 ALL BLINDS ARE MADE IN ENGLAND - FAST LOCAL SERVICE  
 Visit **capriblinds.co.uk**

**GLENWOOD BOLTS & SCREWS LTD**  
 www.glenwoodbolts.co.uk

SUPPLIERS OF QUALITY FASTENERS, FIXINGS & SILVERLINE TOOLS

Unit 2 Lintech Court  
 The Grip Industrial Estate, Linton  
 Cambridge, CB21 4XN  
 Tel: 01223 892095 / 893931  
 Fax: 01223 894122

**NRS CARPETS**

HOME SELECTION  
 FREE MEASURING & ESTIMATING  
 All types of flooring available

Tel: 01223 893634  
 Mobile: 07885 173113