

WISHING ALL OF OUR READERS, ADVERTISERS AND VOLUNTEERS A VERY HAPPY NEW YEAR!

Goodbye to Jack

THIS month, we bid a fond farewell to Jack Glossop, who is stepping down as Editor of the Linton News after more than three years in the post. Jack took over as the paper's Editor in 2020 during a tumultuous summer. The Covid rules in place at the time presented particular challenges for someone starting the job, and his interview for the position was conducted in masks across a garden on the High Street! Fear not though, a new Editor has been found, and we are very pleased to say that David Watts, who is well known by many in Linton, will be taking over from February.

Please find a message from Jack below:

I have enjoyed my time as Editor enormously and I would like to thank the entire Linton News community for their help and support over the years. A lot of people don't realise how much effort goes into the paper, from the editorial and management team, writers and proofreaders, to the army of deliverers who brave rain and cold to get it through thousands of letterboxes every month. I would also like to thank all the wonderful local businesses who advertise with us, without whom we wouldn't exist. Linton is a fantastic village, and it has been a pleasure to get to know the people who make it so special. I wish David the very best of luck in the new job, and I'll be right here to help him get settled in. Long live the Linton News!



Jack has lead the newspaper for the past three years

We are happy to say that we will not be losing Jack entirely, as he will continue working for the paper's editorial team, and helping with page setting. The Linton News is always looking for more contributors and volunteers, so if you have an idea that you think might work in the paper, get in touch. We wish David Watts the very best of luck in the new role, and look forward to introducing him in more detail next month.

Linton News Team



A photo of St. Mary's showing one of the many atmospheric lighting effects made possible by the new lighting scheme installed earlier this year which was funded by the Friends of St. Mary's. The Friends would welcome new members or donations. For more information please visit our website – www.friendsofstmarylinton.org.uk

Badminton club smashes Christmas tree festival

ON Friday 1st December St Mary's Church was transformed into a café with 22 Christmas Trees to visit over the weekend. Groups from across the village decorated their own tree in their own style, from the Infants School to the WI to the gardening club. Over the weekend visitors voted for their favourite tree. Linton Granta Badminton Club were the winners with their painted shuttlecock decorations and Santa bursting through a racket. Refreshments including mulled wine

were served across the weekend, and a variety of live music was played including Linton Belles. On Saturday evening the Serenata Female Voices performed a seasonal concert with the audience participating in 4 carols. On Sunday the weekend closed with Festival Carols, where we sang 6 carols chosen by members of St Mary's congregation, all giving their varied reasons for why it was their favourite. The weekend started off very cold with the church boilers not working on Friday, however the engineer managed to fix one of the two, improving the temperature inside from 4C to 15C! The weekend raised £1660 which is much needed for St Mary's as we have a deficit budget for 2024. Our next event is a Jigsaw Challenge on Saturday 3rd February at 10.45am for an 11am start. Teams of 4 will be given 2 hours to complete a jigsaw, which will be provided, and a prize will be given to the first team to finish. Tickets are £5 per person and will include a soup lunch. Enter as a team or individually by 20th January. To book your place and for further details contact Sue Ellis on 892257 or Charlotte Dodd on events@stmarylinton.org.uk



Charlotte Dodd
St Mary's Events Committee
Chair

A huge array of trees filled the church

New Year swing at LVC

CHASE away the winter blues with a night of music from the Shows. *It's Show time* is an evening organised by Rachel Godsill and the Belles Choir with Linton Village College's Music Department. From Cole Porter, music from Oklahoma and Mama Mia your spirits will be lifted. Hannah Horton will be showcasing her youth Jazz Band, JSteps jazzing up the evening before an opportunity for an Abba sing along. There will be a licensed bar and food truck.

All monies raised for Linton Village College and The Children's Leukaemia and Cancer Group. The event will be hosted at Linton Village College on Friday 2nd February, doors open at 730pm.

Tickets will be available on Ticket Source. Look out for the link this month on the posters and on the Belles Facebook Page www.facebook.com/ding-dongbelles/events

**It's
Show time**
FEBRUARY 2ND 2024
Raising money for LVC Music Department
& CCLG The Children's Cancer &
Leukemia Group
FEATURING
The Belles Choir
Hannah Horton's Youth Jazz Band - JSteps
Linton Voices
Music Madness

The show will raise much needed money for
the LVC music department

Natalie Morris

Readers write...

Dear Editor,

The Mens' Monday Keep Fit Group is now into its thirtieth year. Two of our current members joined when it was first established, and the others have joined from time to time over the years. We may be older, but that doesn't mean there's any change in what we do. Our sessions are still in the Village College Sports Hall, with a mixture of circuit training and stretching exercises followed by basketball or indoor tennis, and it's still open to men of any age. But we want to make the point that although most of us are now over 50, some by quite a number of years, the emphasis remains on fitness and enjoyment going hand in hand. So whilst we encourage each other to do our best, there's no fierce competition. Everyone goes at their own speed and ability. It doesn't matter if you've not done a circuit for years or never played tennis or basketball before. It's still only £5 a week, and if you can't make it any week there's nothing to pay. And we will still go to the Crown month weeks for what we'd like to call a debriefing. To find out more contact Bob Hammett on 891372 (bob.hammett@outlook.com) or turn up any Monday evening from 15 January at 7.15. The first session for potential members is free. We look forward to seeing you.

Andrew Gore

Dear Editor,

I wonder if you can help at all with this request? To put things into context, my mother, Ivy Frances Tofts was born and raised in Linton and lived mostly on Symonds Lane. Her father was Edward Tofts (1882-1962) and her mother was Rose Tofts (1884-1960). I have been (and still am) researching the family tree on my mothers side which seems endless. Ivy Scholefield (nee Tofts) died 12 years ago this December and amongst her possessions was a particular photo (shown below). A group of 8 people taken at the entrance to Clacton Pier on September 6th 1947. From the left, people five and six are my grandparents Edward (Ted) Tofts and Rose Tofts. I would dearly like to identify the other people. I know some information but for corroboration purposes I would like to keep that to myself for the moment. So the real question is; Can you help me at all by identifying these people? I'm sure the people in this photo were from Linton. **Please make contact via the Editor.**

John Scholefield
Please make contact via Editor



Cambridge residents achieve excellent results with Exercise4fun

A TWELVE week programme run by Anglian Leisure Sawston and Anglian Leisure Linton is delivering positive results following its first cohort of participants. The Exercise4Fun scheme, which is funded by South Cambridgeshire District Council, gives participants with a Body Mass Index (BMI) of 25 or above and who are inactive, a temporary pass to local sport centres helping them to kickstart their fitness and lifestyle journey.



The 12 week programme has shown great results

One participant, Mike J, has praised the programme at Anglian Leisure Sawston for significantly boosting his physical and mental health. He said "With a mix of lockdown and working from home, I got used to not going out of the house and being alone, so binge comfort eating became an unwanted habit. Exercise4Fun allowed me to develop a new fitness routine of swimming and going to the gym, meeting a friendly group of people, and receiving advice from the exceptionally encouraging staff at Anglian Leisure Sawston. Overall, it has really helped my mental and physical wellbeing and given me something in life to aim at. I feel so much better for it and intend to continue my efforts." Michelle Wilson, Anglian Leisure General Manager, said: "The health and wellbeing of our local communities is a priority of Anglian Leisure. Our vision is to ensure that a variety of recreation and leisure opportunities are accessible and inclusive to a wide range of people. Receiving this positive feedback from Mike J, and all the participants, has proven the true value

in providing this scheme to residents. Not only considering the mental health benefits, Mike J has also lost 18.6kg in weight and nearly 9% in body fat. His BMI has decreased from 31.3 to 25.9, which will only continue to improve with his new healthy lifestyle."

The next 12-week programme is due to begin on 11 January 2024. Anglian Leisure is also planning Adult Disability and Family programmes due to start soon. To sign up and find out more about Anglian Leisure, please visit www.anglianlearning.org/about-us/anglian-leisure

Eliza Pearson
Anglian Leisure

THE LINTON NEWS Next publication: 5th February 2024
DEADLINE FOR NEWS ITEMS:
Wednesday 17th January

ADVERTISING
Requests for adverts can be sent to:
Judith Rouse: adverts.linton.news@gmail.com

ITEMS FOR THE EDITOR
Should be sent to David Watts
editor.linton.news@gmail.com

FOR DISTRIBUTION QUERIES CONTACT:
Delivery managers: Jenny and Chris Murison, 660408, or
07905 384741 delivery.linton.news@gmail.com

Call 893619 for an audio version of the Linton News

January bin collection dates

Black bins: Wednesdays 3rd, 17th
Blue bins: Wednesdays 10th, 24th
Green bins: Wednesday 10th

Village Diary

A round up of dates from this edition

For entries, email: diary.linton.news@gmail.com

JANUARY

Mon 1	Happy New Year!	
Tue 2	Scrabble Club, 10am - 12pm	St Mary's Pavilion
Tue 2	Mobile Food Hub, 1 - 2pm	Village Hall
Tue 2	Games afternoon, 2 - 4pm	Linton Library
Tue 2	Linton W.I., 7.30pm	Village Hall
Sat 6	Friends' Coffee Morning, 10am - 12pm	St Mary's Pavilion
Mon 8	Senior Keep Fit Club, 7.15pm,	Village College Sports Hall
Tue 9	Story/Rhyme/Duplo-time, 10 - 11am	Linton Library
Tue 9	LALA course - opening lecture, 10 - 11.45am	Village Hall
Tue 9	Mobile Food Hub, 1 - 2pm	Village Hall
Tue 9	Knit and Natter, 2 - 3pm	Linton Library
Tue 9	Gardening Club, 7.30pm	Village Hall
Wed 10	Gardening + Climate Change talk, 2 - 3.30pm	Linton Library
Sat 13	Beano Comic Club, 10am - 12pm	Linton Library
Sat 13	Jazz Concert, 8 - 10pm	Linton Free Church
Mon 15	Senior Keep Fit Club, 7.15pm,	Village College Sports Hall
Tue 16	Story/Rhyme/Duplo-time, 10 - 11am	Linton Library
Tue 16	Scrabble Club, 10am - 12pm	St Mary's Pavilion
Tue 16	Mobile Food Hub, 1 - 2pm	Village Hall
Tue 16	Games afternoon, 2 - 4pm	Linton Library
Tue 16	Historical Society, 7.30pm	Village Hall
Thu 18	Parish Council Meeting, 7.30pm	Cathodean Centre
Fri 19	Daylight Readers, 10.30am/2.30pm	Linton Library
Mon 22	Senior Keep Fit Club, 7.15pm	Village College Sports Hall
Tue 23	Story/Rhyme/Duplo-time, 10 - 11am	Linton Library
Tue 23	Mobile Food Hub, 1 - 2pm	Village Hall
Tue 23	Knit and Natter, 2 - 3pm	Linton Library
Mon 29	Senior Keep Fit Club, 7.15pm	Village College Sports Hall
Tue 30	Story/Rhyme/Duplo-time, 10 - 11am	Linton Library
Tue 30	Scrabble Club, 10am - 12pm	St Mary's Pavilion
Tue 30	Mobile Food Hub, 1 - 2pm	Village Hall
Tue 30	Games afternoon, 2 - 4pm	Linton Library
FEBRUARY		
Sat 3	Jigsaw Challenge, 10.45am	St Mary's Church

- 24 hour emergency service
- Boiler breakdown and servicing
- Boiler upgrade



KA PLUMBING & HEATING

Office: 01223 890554
Mobile: 07890 576608

kaplumbingheating@hotmail.co.uk



Celebrating
the villages and people
of Linton, Abington, Ashdon,
Balsham, Bartlow, Castle Camps,
Hadstock, Hildersham,
Weston Colville, West Wrating
and Wendons Ambo

8th November - 23rd December 2023
Opening hours 10:00 - 5:00,
Wednesdays to Saturdays

94 High Street, Linton, Cambridgeshire CB21 4JT www.galleryabove.co.uk
T: 01223 894899 M: 07909 581827 E: info@galleryabove.co.uk



CapriBlinds

ALL TYPES OF BLINDS
SUPPLIED AND FITTED
FREE QUOTATIONS
FREE HOME VISIT

TEXT ONLY

07774168833

or email colin@capriblinds.co.uk

ALL BLINDS ARE MADE IN ENGLAND
- FAST LOCAL SERVICE

Visit capriblinds.co.uk

PALMER & SON SCAFFOLDING LTD

A local family run business with
over 30 years' experience in the
trade.

All enquiries welcome with a free
quotation on all jobs.

All aspects of scaffold undertaken;
no job too small.

Contact Martin on:
Tel: 01223 892145
Mobile: 07970348182
palmerscaffolding@outlook.com

The Darryl Nantais Gallery

Proprietor: Karl Bachhurst
Fine Art, Framing & Restoration

We offer a wide selection of artwork, contemporary & traditional, local & international, including paintings, prints, ceramics, glassware, sculptures & jewellery. The Gallery also offers bespoke framing, picture restoration and cleaning.



Darryl Nantais

Peter Cor

Maddalena Morey

Established in Linton in 2001 and in Auchterarder, Perthshire in 2019 as DNG Contemporary Art. We also exhibit across the country at Art Fairs & Linton59. A warm welcome is guaranteed wherever you find us.

59 High Street, Linton, Cambridgeshire CB21 4HS ~ 01223 891289 ~ linton59.co.uk
For regular news updates follow & like us on Facebook & Instagram
Tuesday to Saturday 10am to 4pm

G. DYE & SONS
GENERAL BUILDERS,
GROUNDWORK & MAINTENANCE,
CONSERVATORIES & UPVC WINDOWS, KITCHEN &
BATHROOM REITS

ALSO INTERIOR & EXTERIOR DECORATING
REFERENCES AVAILABLE

For enquiries please call

Mobile:
07961 342887

Tel: 01223 892089

georgedy378@btconnect.com



etcetera



Vintage &
Collectibles

The Garden Room, rear of
94 High Street, Linton, CB21 4 JT
opening hours 10.00-5.00
Wednesdays - Saturdays

OPENING SOON

Cambridge Art Makers

A friendly and inspiring
workshop and studio.
Expert tutors offering a
diverse array of dynamic,
engaging creative courses.



Make time for Making!
Claim your creativity if it's
good for you!

6 Lintech Court, Linton
www.cambridgemakers.org

No hibernating for the Gardening Club

A VERY Happy New Year to you all! In December, the club held a social evening with festive nibbles and a light-hearted, entertaining gardening quiz which was, just occasionally, educational too.

The January meeting of the Linton Gardening Club features a welcome return of Richard Gant, the Head Gardener at Madingley Hall, who will talk about 'The History & Development of Madingley Hall Gardens'. The meeting is at 7.30pm in the Village Hall on Tuesday, the 9th of January. Forthcoming meetings include talks on growing fruit and vegetables, trees, composting, and a practical demonstration of planting hanging baskets and tubs.

The club welcomes gardeners, including allotment holders, of all abilities and ages to our friendly meetings, particularly novices who are interested in horticulture. Entry is £3 per meeting or the annual membership is £15.



Frosty twigs



Dwarf iris

Of course, some of you will already be well advanced with your garden plans for 2024 but in the dark days of January, scanning the colourful gardening catalogues for inspiration brightens up any dull day. It's best to leave the garden and lawn well alone if the soil is frozen or sodden and wait for milder and drier conditions. The shortest day has already passed, and spring beckons. Indeed, the first snowdrops, aconites, and dwarf irises often start flowering this month. I aim to complete pruning of deciduous shrubs, roses, acers, willows, and grapevines by the end of January while these plants are dormant. Acers and grapevines in particular weep their spring sap if cut back later in the year and growth and vigour will suffer.

Jim, Linton Garden Club
lgcsecretary@yahoo.co.uk
tel. 01223 893577

Books and so much more!

HAPPY New Year!
Have you decided to take up a new hobby? Come and see if we've got a book to help you on your way!
Visit a warm Linton library this January for:
Viewing the art work from the recent Linton Mapping Project (a collaboration with Arts and Minds) displayed in the library and elsewhere in Linton.

The first of our monthly talks, *Gardening and Climate Change*, on Wednesday 10th, 2 - 3.30pm. Help your garden thrive and become a haven for wildlife. Refreshments available. A free talk but please book your place by contacting the library or email: cambourne.referral@cambridgeshire.gov.uk

Our monthly drop-in Beano Comic Club starts Saturday 13th, 10-12pm. Each month there will be a different pile of Beano's for you to sit and read here in the library. You could even try drawing one of the characters.

Our friendly group for 0-4 year olds, Storytime. Rhyme-time. Duplo-time, 10am - 11am, every Tuesday (in term time). Stories, songs and Duplo play.

Games Afternoon. Tuesday 2nd, 16th and 30th, 2pm - 4pm, meet new people and try new games (you can even bring your favourite with you).

Knit and Natter. Bring along any craft project you're working on, 2pm - 3pm on Tuesday 9th and 23rd.

Daylight Readers. Our Book Groups meet on Friday 19th, one at 10.30am and the other at 2.30pm and always welcome new members!

This year you could always become a Library at Home volunteer! A free Library at Home service for readers of any age who find it difficult to get to the library. We need a local volunteer who can visit monthly. For more information please ask.

Ann King and Melanie Symonds,
Community Library Assistants, Linton Library

Opening hours: Tuesday 10am-5pm; Wednesday 4-7pm; Thursday 2-5pm; Friday 10am-5pm; Saturday 10am-1pm

Customer Services (regular office hours): 0345 045 5225

www.cambridgeshire.gov.uk/library

Jazz cabaret and gospel event

8pm to 10pm on Saturday
13th January 2024 in the Free Church, Horn Lane, CB21 4JF

THE Beacon Youth Trust and Linton Free Church are delighted to invite you to wash away the post-Christmas blues at a cabaret evening of music kindly donated by 440Jazz, a local six-piece band including the highly regarded vocalist, Jane Mayo. You'll also be treated to some wonderful gospel singing from Cynthia Mukoko, Lead Youth Worker for the Beacon Youth Trust. All are welcome to what promises to be a fantastic event in the newly refurbished Free Church, with all funds raised going to a great cause (the Beacon Youth Trust). Details:

There will be an interval of about 30 minutes.

Entry is £10.00 per person (£5.00 concessions).

There will be no physical tickets. Please email Steve Munday (Chair of trustees, the Beacon Youth Trust) with requests for entry on Munday5@aol.com. Please confirm name and number of entries requested when emailing.

Payment will be on the night, either in cash or using a card reader that will be available.

No refreshments will be on sale on the evening, but guests are welcome to bring their own refreshments (snacks and drinks).

The ground floor of the church will be arranged in cabaret style with tables of up to 8 people. There will also be row seating in the gallery upstairs.

Beacon Youth Trust
and Linton Free Church
in conjunction with 440Jazz

Happy New Year from Linton Free Church!

WHAT a year 2023 was for Linton Free Church!

After six months of building work we returned to the main Church in March. So many people came to have a look at the refurbishment during our opening weekend celebrations. Thank you for all the amazing comments about the transformation of the building.

The changes have enabled us to open the Church to the wider community, and we hope there will be many opportunities in 2024 for good use to be made of the church, in addition to our normal weekly services and activities.

Look out for the Jazz Concert being held at the Church on Saturday 13th January, 8pm to 10pm, to raise funds for Beacon Youth Trust. See details top right of this page.

We had a few delays with the building and, at the time of writing, we are still borrowing chairs as we have been badly let down by the supplier. We also had the flood in the Church in June when our portable baptistry leaked. This prompted us to buy a new one, and we had a great service using this on 8th October, this time with no leaks!

That was the first Sunday back for our pastor, Rev. Chris Kershell, after his three month sabbatical. Chris's book, 'Cancer and the Cross' has now been published and is available on Amazon. Look out for Chris telling you more about the book next month.

Other highlights from 2023 included:

The annual light party on 29th October which attracted over 40 families, with over 100 people attending, including helpers.

A fund raising lunch was held for REACH which raised over £1000 and we also raised over £2000 for Child Aid, supporting children and families in Ukraine.

Lots of Christmas events have been held and we once again hosted the Christmas Market, organised by Linton Kitchen and, after a four year wait, the Church was packed for our Carol service. We have also continued to see many new people joining us at our regular services and activities. We are so thankful that the Church is full of life and continues to grow. We would love to see you at any of our services or other activities.

As we start the New Year we look forward to starting another Alpha Course in January. We ran three courses in 2023 and again plan to run these throughout the year. Alpha is a really good way to find out more about the Christian faith in an informal setting where you can ask all the difficult questions that you've always been wanting to ask. You also get food! Dates and details will be on our website along with details of all the rest of our activities: www.lintonfreechurch.org.uk, and on Facebook: www.facebook.com/lintonfreechurch.

A happy and peaceful New Year to you all.

Ian Burns, Church Secretary, Linton Free Church

Save the date!
Bartlow walk
Sunday 5 May 2024
Walk Co-ordinator
Duncan Ogilvy

01223 893644

RJ Fencing of Linton
Your local fencing company

- > New fencing and repairs
- > Hedgehog friendly fencing
- > No job too big or small
- > Free quotations and estimates
- > Landscaping services
- > Licensed waste carriers
- > Friendly professional service

Enquiries call
Remus 07711030877 Jason 07719895149
rjfencing1@outlook.com

Wylde Sky BREWING

brewery fresh beer | food trucks | live music | good vibes

BREWERY
Grip Ind. Estate
Hadstock Road
Linton
CB21 4XN

TAPROOM
Thurs - Sun
Check out
our events

SHOP & ONLINE
FREE LOCAL DELIVERY

thanks for supporting LOCAL

@wyldekybrewing | wyldekybrewing.com | 01223 778350

KJL Roofing

All roofing repairs, lead-work, renewal of pitched or flat roofs

New guttering, repairs/unblocking

Free estimates before any work commenced

25 years + Experience

Tel: 01223 892542
Mob: 07958 618440

A & R PLASTERING

All aspects of plastering undertaken:

- Plasterboarding
- Rendering
- No job too small
- 30+ years experience
- Free estimates

Tel: 01223890228
Mobile: 0774 8627920

ProClean
'Your Complete Cleaning Solution'

- *Carpet Cleaning *Rugs *Stain Removal
- *Car Valeting *Caravans *Motor Homes
- *Upholstery Cleaning *Stain Protection
- *Floor Cleaning / Scrubbing / Sealing / Polishing
- *Pressure Washing of Patios Paths & Driveways
- *Domestic Cleaning * Top Ups & One Off Cleaning
- *Gutter / Fascia Cleaning
- *Contract Office Cleaning (Flexible Options)

TEL: 890433 Mob: 0777 375 8355
74 Bartlow Rd, Linton, Cambridge, CB21 4LY

GIN side the box

Mobile Gin and Prosecco Bar

Weddings
Parties
Events

Mobile: 07821 388380
ginsidethebox2022@gmail.com

P.B MAINTENANCE HANDYMAN

GENERAL MAINTENANCE
FENCE, GATE REPAIR
SHEDS
SMALL CARPENTRY JOBS
SMALL PLUMBING JOBS
FLAT PACK ASSEMBLY
ODD JOBS
NO JOB TOO SMALL

Pb.maintenance@yahoo.com
Tel: Paul 07816310197

NRS CARPETS

HOME SELECTION
FREE MEASURING & ESTIMATING

All types of flooring available

Tel: 01223 893634
Mobile: 07885 173113

A busy term at the College

IT was lovely to welcome back the Class of 2023 at our Presentation Evening at the end of November to collect their GCSE exam certificates as well as awards nominated by their teachers for academic achievements. Tutors gave some humorous and heartfelt speeches recounting their years with their tutor groups, many of whom had taken them through from years seven to eleven. After the speeches and presentations, guests were treated to an amazing spread kindly put on by the Friends of LVC.

You may have spotted LVC students walking through the village and local countryside during our annual sponsored walk the following day. It was great to have the whole school involved on the 12-kilometre route fundraising for the Friends of LVC. With the fancy dress theme of 'At the Movies', students and staff made an amazing effort and made the walk that bit more colourful. Friends volunteers did a fantastic job of marshalling the route. We are very grateful for the support of this amazing group of parents/carers and community members to enhance and enrich LVC students' educational experiences.



Class of 2023 return for their Presentation Evening



Minions on the sponsored walk

The autumn term has seen a fantastic array of arts events and activities. Platform 23 exhibition at Michaelhouse Café in Cambridge showcased wonderful artwork from our students alongside pieces from all Trust secondary schools. We hosted a Year 2 singing festival involving our feeder primary schools, which also included a performance from our choir, Linton Voices. Students taking Dance as an option also took part in a trip to Dance East to develop their theatre technical skills and work with professional dance companies in some intensive workshops. Lots of students across all year groups were involved in our Christmas Arts Showcase.

Helena Marsh, Principal



Students with their artwork



Developing theatre and performance skills

Learn new skills in Haverhill



WELCOME to your Personal and Professional Learning Centre in Haverhill. Step into the world of Personal and Professional Learning

in Haverhill. With a wide range of leisure and part-time courses on offer to suit all ages and abilities, we have something for everyone.

Whether you are aiming to enhance your essential skills in Maths, English, and Computer Skills or eager to learn a new hobby, our extensive offering of daytime and evening classes and workshops caters to all. Our courses accommodate various skill levels, from beginners through to Level 3, so wherever you are in your learning journey, we can help.

Dive into subjects like accounting and bookkeeping, business courses, modern languages, ICT, creative arts, painting and drawing, psychology, English and maths. These classes not only present valuable learning opportunities but also serve as a platform for meeting like-minded individuals, building confidence, and working towards personal goals or recognised qualifications. For those who prefer self-study, we offer a selection of online courses covering subjects such as environmental sustainability, dementia care, customer service skills and counselling.

With lots of different courses and learning options, our team is here to answer your queries, offer guidance, and support you in achieving your unique goals.

If you are looking to gain a qualification, upskill in your career, refresh your knowledge, or try a new hobby, our friendly and knowledgeable team at Haverhill are ready to support you.

As the Haverhill Centre Manager, I extend a warm invitation to our Advice Event on Thursday 1st February 2024, from 4-7pm. Join us to explore our courses, meet our friendly team, and tour our classrooms. Secure your spot at www.wsc.ac.uk/haverhill and drop in for a cup of tea and look with personalised advice and guidance on the day. We look forward to welcoming you to your local college in Haverhill.

Elaine Simmons
Centre Manager

Personal and Professional Learning in Haverhill
2 Park Road, Haverhill, CB9 7YD

Linton Complementary Health Centre

2B Bartlow Road, Linton, CB21 4LY

- Acupuncture
- Shiatsu
- Massage
- Food Intolerance Testing

Telephone: 01223 891145
Email: enquiries@lintonhealth.co.uk

ClearTax
& ACCOUNTING LTD

Quality, friendly accounting services and taxation advice.
Sole trader and small company specialist.
Free initial consultation.

▼ We have a new address ▼
Unit 1, The Old Stables, Yale Farm, Linton Road, Balsham, CB21 4HB.

01223 772326
janine@cleartax.co.uk
www.cleartax.co.uk

GLENWOOD BOLTS & SCREWS LTD
www.glenwoodbolts.co.uk

SUPPLIERS OF QUALITY FASTENERS, FIXINGS & SILVERLINE TOOLS

Unit 2 Lintech Court
The Grip Industrial Estate, Linton Cambridge, CB21 4XN
Tel: 01223 892095 / 893931
Fax: 01223 894122

YOU BEAUTY
CAMBRIDGE

YOUR LOCAL BEAUTY SALON

Check us out at
5 Balsham Road, Linton
Cambridge CB21 4LD
youbeautycambridge.co.uk
01223 668400

zigzagpilates

- Qualified Body Control Pilates Teacher.
- Classes and 1-1 sessions
- Specialising in older and less able clients.

Contact Rachel **07905105081**
Rachel@zigzagpilates.co.uk
www.zigzagpilates.co.uk

CELEBRATING 30+ YEARS OF SERVICE

Mortgage Quest
Mortgage & Protection Specialists

Dean Porter
Independent Mortgage Broker for Linton and the surrounding villages
Mortgage advice for all circumstances, call today to discuss your needs
07876 170716 / 01763 244884
dean@mortgagequestroyston.co.uk
www.mortgagequestroyston.co.uk

Mortgage Quest is an appointed representative of The Right Mortgage Ltd which is authorised and regulated by the Financial Conduct Authority.
Your home (or property) may be repossessed if you do not keep up repayments on your mortgage or any other debts secured on it.

PLUMBLINE & SON
PLUMBING AND HEATING ENGINEER
PROFESSIONAL DOMESTIC PLUMBING SERVICE
OIL BOILER SERVICING & REPAIRS

Call John & Zach
01223 893903
Supcik@talktalk.net

Fully Qualified and Insured
City & Guilds / OFTEC Registered
Friendly and Reliable Service

ROCKIN IT

'Making you feel great inside and out'

Contact:
www.rockinittwellbeing.co.uk
07738 610616

Classes available in Linton on
Wednesday and Thursday.

Well-being
Deep facial m.

Linton

07958 657300
lintoncabs@btinternet.com

Linton Cabs
Private Hire for: Airports / Train Stations / Local Travel

Martin French



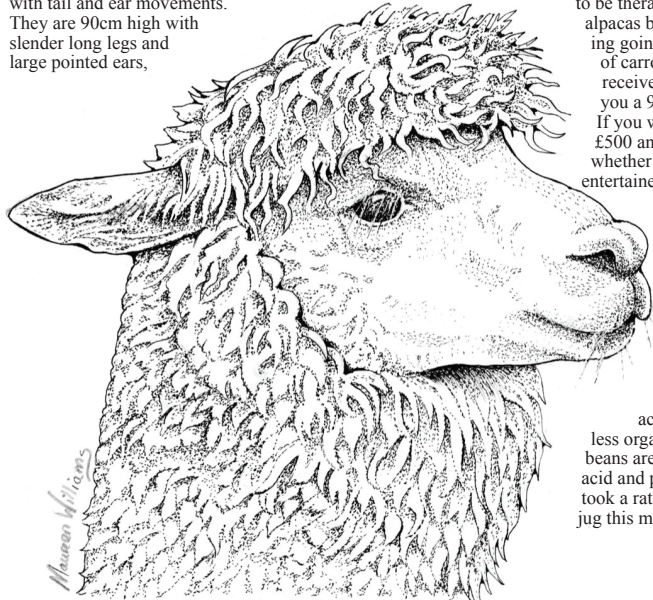
COUNTRY MATTERS

Text by Oriel O'Loughlin, illustrations by Maureen Williams



Alpacas – Pets or Livestock?

FOLLOWING a discovery of unwanted critters in the flour I started an article on weevils, but ran out of enthusiasm very quickly. Why not choose something big and friendly and easy to illustrate? Our bike rides have yielded several encounters with that most appealing of mammals – the alpaca, specifically the Huacaya Alpaca, which makes up more than 90% of those in the UK. The alpaca is a gentle, inquisitive and captivating woolly bundle of charm, and you can understand why numbers are growing fast in the UK. I was about to say they are also cuddly, but actually they are more livestock than pets, and though they come and inspect you at the gate, they are apparently not to be hugged. They are not long necked sheep but members of the camel family, and smaller than llamas. They communicate by soft humming with tail and ear movements. They are 90cm high with slender long legs and large pointed ears,



weighing between 60 and 90kg. Babies, called “cria”, weigh between 6-8kg at birth. Most alpacas live in Peru, Colombia and Ecuador, domesticated 6000 years ago and first introduced into the USA in 1984. Now it is illegal to export them. They are prized for their fine, lightweight, strong, lustrous, water resistant and dense fleece, treasured by the Incas centuries ago and worn only by royalty. Each complete fleece weighs around 2.5kg and come in 14 official colours of black, various browns and creamy white. Back nearer home you can set up an alpaca farm relatively easily, with low acreage and low upkeep costs. Three is the minimum number, as they are herd animals and hate being alone. They are excellent at seeing off foxes and dogs, and chicken farmers keep them as guards. They are known to be therapeutic, and we once watched on TV two alpacas being taken on tour in a care home, including going upstairs in the lift. Treats in the form of carrots, apples and pumpkins were gratefully received. The Virgin Alpaca experience will sell you a 90 minute walk with alpacas for £79. A snip! If you want to breed alpacas, they sell for between £500 and several thousand pounds, depending on whether they are pet, hobby or show quality. I was entertained to see all those on offer online from some of our relatively local Alpaca farms, with names like Evolution Volcanicity, Artwork Macchiato, Mile End Florian and Appledene Commander in Chief. Artificial insemination is not successful – however you can purchase “drive-by stud servicing” for £750. Honestly that is what is on offer. Not only are they valued for their fleece, but also their droppings, known as “beans”. Because they have three stomachs, food is filtered three times so there is less organic matter than horses, sheep or goats. The beans are much prized for their nitrogen, phosphoric acid and potash content, though having read this, Ben took a rather closer look at the contents of the coffee jug this morning.

PLANNING APPLICATIONS

T1 - Ash - This tree is situated right on the boundary of the property. It over hangs the roof of 11 High Street and has previous caused issues. The owners of No.11 and also Numbers 9 and 7 have repeatedly made complaints about falling branches and excessive shading. The tree is also exhibiting large increment strips on the stem and fruiting bodies of *innonotus hispidus*. Request removal of tree to ground level to be replaced with native species in more suitable location. Open for comment icon
99 High Street Linton Cambridgeshire CB21 4JT
Ref. No: 23/1491/TTCA | Validated: Tue 05 Dec 2023 | Status: Awaiting decision

Felling of Lime Tree in the garden of Number 4 Essex Gardens (T1). Fell due to proximity to property, and has outgrown its location. Tree location and size is now presenting a nuisance as discharge from the tree whilst in leaf is preventing any use or enjoyment of our entire garden from March to October. The issue is exacerbated in the case of No 4 as it has the largest tree and the shortest garden meaning the entire garden is shaded by the tree. The original TPO (12/85/SG) was put in place to protect a Group of 6 Lime Trees situated on the rear boundaries of 4, 5, 6 & 7 Essex Gardens which were deemed an 'important amenity feature in the locality'. Two of the six protected trees, both in the gardens of No 7 (T5 & T6) have already been removed reducing the overall amenity value of the group. In addition the pollarding of this individual tree (for safety reasons) in 2017 has further diminished the amenity value this tree provides and its appearance is now no longer consistent with the 3 other remaining trees. The weakened joint which made the previous pollarding necessary continues to capture water and there are signs of further decay in this joint from which there are three major limbs which overhang the public footpath and the property. It could be possible to abate the nuisance the tree presents through : - removal of several of the major limbs - this would cause extreme stress to the tree and would leave the resulting tree unbalanced - full pollarding - this would remove any residual amenity value the tree represents As a result we are seeking to remove the tree and replace it with a suitable alternative. Given the challenge of siting any replacement in the current location I would be happy for the local authority to choose a suitable location for the replacement to ensure the amenity value is maximised. Open for comment icon
4 Essex Gardens Linton Cambridgeshire CB21 4NH
Ref. No: 23/1486/TTPO | Validated: Mon 04 Dec 2023 | Status: Awaiting decision

T1 Willow tree growing next to the riverbank. The tree has a pronounced easterly lean away from the riverbank. The soil on the outside of the lean is clearly lifted at the root plate. The lean has been present for many decades, which is evident when the tree is viewed from a distance. From around 10 metres height, the trunks have grown in a curve to rebalance the lean. However, it is evident that the lean has become more extreme recently. This indicates a gradual failure at the root plate which is exacerbated by riverbank erosion. The tree is predisposed to collapse, and action must be taken to mitigate that risk. Recommended that the tree be introduced to a cycle of pollarding. The attached photograph indicates where I suggest the tree be cut back to (just above where the single trunk divides into three). Open for comment icon
Glebe Land At Rear Of 16 Horn Lane Linton Cambridgeshire CB21 4HT
Ref. No: 23/1482/TTCA | Validated: Fri 01 Dec 2023 | Status: Awaiting decision

WHAT'S ON

High Street Linton CB21 4JT



January.....

Wednesday 10 th Quiz	7:30pm
Saturday 13 th Karaoke	8pm
Wednesday 24 th Rock 'n' Roll Bingo	7:30pm
Saturday 27 th Live Entertainment – Matt Barden	8pm

Tuesday - Sunday Happy Kebab Burger van from 6pm



McKenzie & Haywards Garage LTD

MOT by appointment while you wait
Servicing, Collection & Delivery Service

Unit 3 & 4, Lintech Court
The Grip Industrial Estate
Linton, Cambs
CB21 4XN

Tel : 01223 894140
Fax : 01223 890035
mhgarage@btconnect.com



THE AUDIOLOGY EXPERT
STAY CONNECTED TO LIFE

Everything we do is designed for your individual care

Our Services:

* Hearing Assessment	* Ear Wax Removal
* Tinnitus Consultation	* Full Line Of Hearing Aids
* Hearing Aids Accessories	* Follow Up Services

To schedule a consultation Phone: 01440 782 055

Email: enquiries@theaudiologyexpert.co.uk

www.theaudiologyexpert.co.uk

COOPER BARNES

Family run body shop at the Grip, with over 40 years experience in the motor trade

Body Repairs, Accident damage Repairs, Servicing, MOT's Alloy Refurbs & Air-Con Servicing Manufacturer and Insurance approved

2, The Grip Ind Est., Hadstock Road, Linton, Cambridge CB21 4XN
01223 880603
repairs@cooperbarnes.co.uk

www.cooperbarnes.co.uk





Project Solar UK

Powering Your World

The Benefits Of Solar

Discover why you should choose to use the sun's power to energise your home, control your energy costs, save & earn money and do your bit to save the planet. Here at Project Solar UK Ltd, we passionately believe in providing the very best products, prices, quality & service for you! So much so our customers love us and have voted Project Solar as the UK's No 1 solar energy provider.

Contact your local representative
Lawrence Seaforth 07486 669683

TIM PHILLIPS & Co. Accountants

Established 1991

Independent, specialist service for:
**Small Business • Self Assessment
Personal Taxation**

Free initial consultation – no obligation
EASY, FREE PARKING

Copley Hill Business Park, Cambridge Rd., Babraham
Off A1307 between Wandlebury and Babraham
Tel: 01223 830044. www.tpaccounts.co.uk

Linton Complementary Health Centre

2B Bartlow Road, Linton, CB21 4LY

- Acupuncture
- Shiatsu
- Massage
- Food Intolerance Testing

Telephone: 01223 891145
Email: enquiries@lintonhealth.co.uk

SELF STORAGE LINTON

20FT WEATHERPROOF CONTAINERS
FOR ALL YOUR STORAGE NEEDS

COMPETITIVELY PRICED

Tel: 07572 834161
lintonstorage@gmail.com

District and County Councillors' monthly report December 2023

Solar Farm Application

We have previously reported on a potential planning application coming forward in our area for a solar farm. The size of the area being considered is fairly significant, some 900 hectares. It's worth pointing out that this is the total area being looked at for planning merit, it is likely that a much smaller area will come forward as part of a formal planning application. The geographic area being looked at is from the north of Linton/Abington up to Balsham and west, roughly following the route of the Roman Road, across the A11 to the edge of Fulbourn. The promoters of this idea, Kingsway Solar, will be going public with their plans on December 14th, so please do take a look when possible.

Autumn Statement

We have previously reported that Michael Gove, the minister for the department of Levelling Up, Housing and Communities (DLUHC), had been very public with his plans to turn Cambridge into a British version of 'Silicon Valley', attempting to turn the key location for tech and scientific research companies to base themselves in Europe. His vision of making that prospect a reality is by building circa 200,000 houses in the area, making it more sustainable for large companies to locate here. To put that into some kind of perspective, Cambridge city is currently 60,000 houses, meaning that an additional 200,000 would make Abington, Linton, Balsham etc suburbs of Cambridge. This idea doesn't seem to be going away, as in November's Autumn Statement, it was announced that there was going to be £3 million put into a 'Cambridge Delivery Group' to drive this forward. There was also £2 million announced for tackling the water scarcity issue in the county, which, in our view, is nowhere near enough to tackle this problem. Nevertheless, watch this space as it will be interesting to see how this develops.

Uttesford Local Plan

Some may recall that a few years ago Uttesford District Council (our neighbours in north Essex) were proposing a new town of circa 5,000 houses to be built at Great Chesterford. They were told by a government planning inspector that this wasn't sustainable and to think again. They have recently published their next proposal which doesn't include any large-

scale developments near to the Cambridgeshire border. So those who were concerned, especially the parishes south of the A1307, can hopefully rest easy!

Street Light Switchover

The County Council is about to embark on a project to replace all of the bulbs in streetlights to more effective LED lanterns. The work is due to begin in early 2024 and will take roughly 2 years to replace the 47,500 streetlights in Cambridgeshire. Information on when our area can expect this change will be published on the County Council, as well as Balfour Beatty's, websites in due course.

Anaerobic Digestion Plant Proposals

In our area we have not one, but two planning applications submitted to the relevant local authorities for bio energy digestion plants. These are plants that breakdown agricultural materials and turn them into energy. For reference there is one on the A505 between Royston and Baldock. The first application is located just over the Suffolk border outside of Haverhill and off the A1307. The site runs up the Cambridgeshire border and ends at the edge of West Wickham/Weston Colville. You may have seen signs for the anti-lobbying group 'Muck Off Acorn' - this refers to this application. As the application is in Suffolk it will be Suffolk County Council that will make the decision on this but whilst the time for public comments has closed, you can still look at the plans and write to the case office dealing with the application - andrew.rutter@suffolk.gov.uk. The second application is in the parish of Streetly End, West Wickham. This site is smaller than the first and as it is in Cambridgeshire will be decided by Cambridgeshire County Council. The council are taking public comments now and this can be done via the website - <https://planning.cambridgeshire.gov.uk/online-applications/applicationDetails.do?activeTab=summary&keyVal=S0BB1JDYKNQ00> public comments for this application close in early December but you can always contact that planning officer directly, should you want to raise concerns after this time helen.wass@cambridgeshire.gov.uk

Winter Vaccinations

Flu, Covid-19 and shingles vaccinations are available to eligible groups. Flu and Covid vaccine information is available at www.nhs.uk/winterevaccinations and information about shingles vaccines at www.nhs.uk/conditions/vaccinations/shingles-vaccination

LHI Bids

This years round of Local Highway Improvement (LHI) bids are now open for parish councils to submit a proposal for funding for a small highway improvement project in our area. Our parishes have been successful in the past and funding has enabled some small, albeit much needed improvements to the highway network that wouldn't usually form a part of the Highway budget. Full details and application forms can be seen at www.cambridgeshire.gov.uk/residents/travel-roads-and-parking/roads-and-pathways/improving-the-local-highway/local-highway-improvement-funding

Older Adults Social Inclusion Grant

The County Council has a grant available for funding for services, clubs and activities that support older adults, 65 plus, with emerging care or support needs. Full info and application can be found at - www.cambridgeshire.gov.uk/council/communities/care-together/older-adults-social-inclusion-grants

Shire Hall

The previous home of the County Council, Shire Hall in Cambridge, is being remarketed due to the previous buyer of the site, Brookgate, pulling out of the purchase citing market conditions. So if you know anyone in the market for an historic building, there's a great one up for grabs.

Cambridgeshire Holidays and Food Programme

This is another County Council run programme that provides holiday activities and food for children who are in receipt of benefit-related free school meals. This isn't the only eligibility criteria but all families in receipt of free-school meals have been sent a voucher directly. Full information at - www.cambridgeshire.gov.uk/council/communities/support-with-the-cost-of-living/holiday-activities-and-food-programme

Mobile food hub

There is a mobile food hub that visits Linton Village Hall on Coles Lane every Tuesday between 1pm and 2pm. There is no registration required just turn up on the day. If any more information on the scheme, this can be found on the Hope CIC (the charity running the scheme) website or on 07474725477.

Free Electric Blankets

South Cambs District Council are offering a free electric blanket to those most in need, in the run up to the winter months. Those that qualify for these will need to be claiming Council Tax Support and also one of the following criteria:
 - Attendance allowance
 - Personal independence Payment
 - Disability Living Allowance
 Full detail of the scheme can be found here - www.scamb.gov.uk/free-electric-blankets-will-help-residents-most-in-need-this-winter/

Contact Details

District Council - John Batchelor - johnbatchelor23@gmail.com
 District and County Council - Henry Batchelor - henrybatchelor89@gmail.com

THE DOG & DUCK
 63 HIGH STREET, LINTON
 TEL: 01223 890349

LIVE JAZZ
 FIRST SUNDAY OF EVERY MONTH FROM 2:30PM

BREAKFAST
 EVERY SATURDAY 10AM-11:30AM

FISH & CHIP WEDNESDAYS
 EVERY WEDNESDAY

FIND OUT MORE ON OUR WEBSITE
WWW.DOGANDDUCK-LINTON.CO.UK

'LOOK OUT FOR SPECIAL OFFERS'

Bentens

Accountants and Tax Advisors

Abbey House, 51 High Street
 Saffron Walden

01799 523053 www.bentens.co.uk

MALLYON & DONALDSON
 MASTERS OF MODERN AND TRADITIONAL BUILDING

contact@mallyondonaldson.com
 01223 290030
 07885 367112

Extensions - Alterations - Repairs - Hard Landscaping

Singing Lessons

Sarah Rosewell
 BA (Hons) Music

Individual singing lessons available for all ages and abilities
 Whether towards exams or purely for pleasure
 * CRB Checked
 * Based in Linton
 For more information contact:
 Sarah on 01223 894861

Email: sarahrosewell@hotmail.com

ABC tree surgery
 07919343321

Local, reliable Arborist based in West Wickham. Able to deal with all tree surgery works. Fully insured and qualified.

rob@abctree.co.uk
www.abctree.co.uk

ADAMS HARRISON SOLICITORS
 3 OFFICES IN 3 COUNTIES

- Residential Conveyancing
- Matrimonial & Family Law
- Wills, Tax Planning & Probate
- Employment Law
- Dispute Resolution
- Commercial Property
- Trusts

We have the experts to assist you when you really need us.

Saffron Walden, Essex 01799 523441
 Haverhill, Suffolk 01440 702485
 Sawston, Cambs 01223 832939

enquiries@adams-harrison.co.uk
www.adams-harrison.co.uk

LINTON VILLAGE MOTORS
 (situated in Great Abington opposite Granta Park)
www.lintonvillagemotors.co.uk

Tel: 01223 830550

- MOT testing
- All makes of vehicles serviced and repaired
- Tyres at competitive prices
- courtesy car provided
- Polite and friendly staff

Mon-Fri: 8.30am-5.30pm Sat: 8.30am-12.30pm

McKenzie & Haywards Garage LTD

MOT by appointment while you wait
 Servicing, Collection & Delivery Service

Unit 3 & 4, Lintech Court
 The Grip Industrial Estate
 Linton, Cambs
 CB21 4XN

Tel : 01223 894140
 Fax : 01223 890035
mhgarage@btconnect.com

HAVE YOU LOST YOUR MARKETING MOJO?

BRICK MARKETING

Get in contact & we can breathe life into your sales & marketing.

brick-marketing.co.uk
natalie@brick-marketing.co.uk

MOPS HAIR SALON

HAIR BY JO DENNY
 WOMEN | MEN | CHILDREN
 CUTTING & COLOURING

41 LINTON HIGH STREET
 (BEHIND BOSWELL'S BAKERY)
t: 01223 893 285

Welcome Back Lee re-joins the Parish Council

Parish councillors are all volunteers so when the pressure of running a growing business increased there was no choice for me but to resign from the council and get on with the day job.

That was in May of 2022 but when work became manageable again it seemed there were many things that still need doing around our village. So, I was pleased to be accepted back into the Parish Council just a few weeks back to help as best I can.

Not much has changed, the sheer variety of works that need to be undertaken hasn't altered. The time pressures to get things done while endlessly juggling budgets and time available can take their toll on everybody with both office staff and councillors usually working flat out just to keep up.

None of the councillors take these responsibilities lightly and all give of their own time to do the best for the Parish as a whole. Returning to the council wasn't just an option but more of an obligation to somebody who made this village home seven years ago and has enjoyed living here since.

We have so much worth preserving, improving and taking care of that we should all be doing our own little bit to keep this tiny corner of Cambridgeshire a delightful place to live.

For me it's on with round two of being a councillor, let's get busy.

Cllr Lee Gardner

Dates for your Diary

THE NEXT Full Council meeting will take place on Thursday 18th January 2023. The meeting will take place at the Cathodeon Centre, starting at 7.30pm.

Members of the public and press are welcome to attend. If you are unable to attend and would like to raise a subject with the Linton Parish Council please contact the office on 01223 891001 or email us at enquiries@linton-pc.gov.uk.

Items to be considered by the Parish Council must be received by the office no later than **ten days prior** to the meeting.

Parish Council Meetings 2024

Full Council Meetings

Every third Thursday of the month exc. December at the Cathodeon Centre @ 7.30pm

Planning Committee Meetings

Every third Thursday of the month exc. December at the Cathodeon Centre @ 6.30pm.

Finance, Risk & Compliance Meetings

Every fourth Thursday of the month exc. December at the Cathodeon Centre @ 7.30pm.

Various working groups meet during the month.

Parishioners are encouraged to join working groups which include but are not limited to;
Neighbourhood Plan, River & Wildlife, Environment, Traffic, Events and Youth

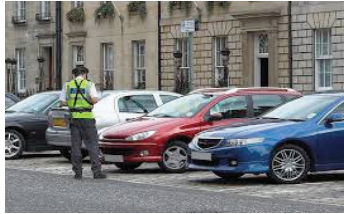
Is there a project you feel passionate about?
Please get in touch with the Parish Council office and see how you can get involved.

Clerk

Civil Parking Enforcement January 2024

THE PURPOSE of introducing Civil Parking Enforcement (CPE) is to enable the transfer of powers for street parking enforcement from the police to the County Council. The majority of on-street offences are then treated as civil matters enforced by the local authority.

Following concerns and frustrations raised by parishes, Civil Parking Enforcement enables the County Council to promote safe and sensible parking, improve traffic flow and congestion and make life easier for all those who use the highway.



The CPE and Civil Parking Enforcement Officers (CEOs) cannot enforce all restrictions, some still lie with the police. CEOs can only enforce where there is already a restriction in place, such as single and double yellow lines or where there is a dropped kerb with textured surface. The enforcement responsibilities that remain a police matter include:

- obstructive parking
- dangerous parking
- footway parking where there are no restrictions in place
- parking in a cycle lane where there are no restrictions in place.

Incidents of this nature must still be reported with evidence where possible via the Cambridgeshire Constabulary Online reporting tool using the link below.

<https://www.cambs.police.uk/ro/report/ocr/af/how-to-report-a-crime/>

The Greater Cambridge Partnership (GCP) are funding two CEOs for South Cambridgeshire for a period of five years, after which the scheme will need to be self-funding.

The work of the CEOs can be undertaken seven days a week, including evenings and weekends. The schedule will be governed by demand and resources and can be tailored to the needs of the parish.

The scheme is due to "go live" in South Cambridgeshire from mid-December whereby a six week period of Warning Notices will be issued with no fine payable. This is hoped to raise awareness and to prevent Penalty Charge Notices (PCN) being issued. However, after the initial grace period, from 1st February 2024 Penalty Charge Notices will be issued. These are currently fines of £50-£70, depending on the seriousness of the contravention.

The successful LHI Bid of 2023/24 will also see extension of double yellow lines on the High Street in the spring of 2024. The Parish Council hope that this combined approach will alleviate some of the concerns raised regarding illegal and inconsiderate parking in Linton and make the village safer for everyone.

Please be considerate when you park your vehicle, avoid parking on the footpath, parking on junctions and blocking driveways. Use the car park in Coles Lane if you are able to do so. To borrow a phrase from the Cambridgeshire Constabulary, the CEOs can't be everywhere but they can be anywhere!

Cllr Merrie Mannassi

Planning & Meeting Update December 2023

DARE I write that planning applications in Linton seem to have reduced in both number and complexity towards the end of 2023? I sincerely hope that I haven't just invited a plethora of applications to challenge us at the start of 2024!

The Planning Committee would like to thank all residents who met with us over the last year to talk through their plans in advance of submission – this early communication helps us understand the plans so we send better comments to the ultimate decision makers – South Cambridgeshire District Council (as a part of the Greater Cambridge Planning Service).

In the last month we have been consulted on the SCDC Statement of Community Involvement. This explains how the democratic planning process is supposed to consult with the community. Simply put, if you want your voice to be heard, you need to be aware of the very short deadlines in which you will be consulted!

For any larger developments, the community is supposed to be consulted at the "pre-application" stage by the developer, although this is not mandated. Their plans are then supposed to show how they have responded to the comments that were raised. Linton PC commented that we would like to see this initial consultation stage strengthened!

When an actual planning application (of any size) comes forward, there are only 21 days of formal consultation, although planning officers will take any comments they receive before the decision is made into account.

On 30th November, the Joint Parish Planning forum heard two presentations relating to climate change and biodiversity.

The first covered the issue of the Urban Heat Island effect – where the temperatures experienced in town and city centres can be 2 or 3 degrees warmer than their rural surroundings. The increased heating causes an increased demand for cooling, with residents typically turning to air conditioning units.

This increases electricity demand, pumps heat from the inside of buildings outside (further warming the environment) and creating a vicious cycle. 2023 saw planned black-outs in some countries when electricity supply couldn't meet demand.

The UK will not be immune to this in the future. Some solutions that planners are encouraged to consider include improving sustainable transport, providing shade at both building and street level and increasing the "Green and Blue Infrastructure".

This is easier when planning from the start of a large development than when refurbishing older town centres, although the city of Utrecht in the Netherlands provided an example of what can be achieved when planners, residents and developers all share the same vision for a greener future.

The second presentation was about the new law that has been passed to require all new development to deliver biodiversity net gain. The law requires a minimum of a 10% increase in biodiversity, but the Greater Cambridge Planning authority (SCDC and Cambridge City combined) will be looking for a 20% net gain.

The onus will be on developers to demonstrate how they will leave the environment in a measurably better state, with the improvements secured for a minimum of 30 years. It will not always be possible for developers to deliver all the gain on site. In this case, they will deliver contributions to create new nature reserves off-site.

Lower Valley Farm in Fulbourn has already been secured as an "off-site" area for the creation of a nature reserve.

The big question "how will this all be measured?" was answered in part: The Natural Environment Team Lead was excited that he now has a spreadsheet that "measures" Habitat Size, Condition, Distinctiveness and Strategic Significance – unfortunately he had to leave the meeting before he could explain this any further!

Cllr Kate Kell

A J Pest Control Ltd

Local Professional Service
Member of NPTA
Domestic/Commercial/Agricultural
Experts in all areas of pest control



Mice, Rats, Wasps, Bees, Hornets, Moles, Moths, Ants, Bed Bugs, Fleas, Flies, Squirrels, Birds, Woodworm.

Tel: 01799 542 505 Mobile: 07855478824
E-mail: info@ajpestcontrol.com www.ajpestcontrol.co.uk

ADMIRAL ESTATES

Residential Lettings and Property Management

- Local, Family Run, Business
- Fully Regulated, Compliant and Qualified
- Specialists: Cambridge, Linton & Local Villages
- 25 Years Experience

If You Prefer Great Service From A Good Local Business? Why Not Call Us?
Check Out Our Google Reviews: Cambridge Office or Our Local Linton Office.

Call us Now: 01223 891227

www.admiralestates.co.uk

THE DOG & DUCK
63 HIGH STREET, LINTON
TEL: 01223 890349

LIVE JAZZ
FIRST SUNDAY OF EVERY MONTH FROM 2:30PM
BREAKFAST
EVERY SATURDAY 10AM-1130AM
FISH & CHIP WEDNESDAYS
EVERY WEDNESDAY

FIND OUT MORE ON OUR WEBSITE
WWW.DOGANDDUCK-LINTON.CO.UK



'LOOK OUT FOR SPECIAL OFFERS'

LINTON PAVING COMPANY

YOUR LOCAL LANDSCAPING
BLOCK PAVING & PATIO
SPECIALIST.
PROPERTY MAINTENANCE
Int/Ext Painting, General Repairs
FRIENDLY SERVICE.
FREE QUOTATIONS
Tel: Andre Jacobs

Mob: 07765 594398
Office: 01440 702498

EDWARD'S GARDEN

Garden maintenance, restoration, clearance, etc.
Free initial advice

07768701010

edwardsgarden84@gmail.com

AWARD-WINNING SUPPORT

Chesterford HOME CARE
Caring with Head and Heart

Reliable and flexible daily visiting care
Our individually-tailored packages are designed for adults of any age who require regular help or support in their own home. We cater for a wide range of needs, including:

- Assistance with personal care
- Administration of medication
- Companionship and sitting service
- Shopping and meal preparation
- Transport to medical and other appointments



GREAT BRITISH CARE AWARDS
Residential Winner 2020
Live-in care – the cost-effective alternative to residential care
A bespoke live-in care service – each client benefits from their own unique blend of companionship, cooking, house-keeping and personal care designed to help them maintain their independence and continue living happily and safely in their own home.

Call us in confidence 7 days a week on: 0800 411 8636 chesterfordhomecare.co.uk

Announcement

Spring/Summer 2023
(Date to be confirmed.)

All-Day Speedwatch

(Locations throughout the village.)

Volunteers welcome!

Contact: Speedwatch Team



Grantchester Hotels supports Linton Speedwatch

ABBREVIATED minutes of the Linton Parish Council meeting held on Thursday 16th November 2023 at the Cathodeon Centre.

Chairman's Comment.

The Chairman confirmed the resignation of Cllr John Bald and expressed thanks for his service during the past six years as a councillor, highlighting his support for his wife, Enid during her time with the Parish Council.

The Chairman expressed thanks and congratulations for the Fireworks Event on Saturday 4th November 2023, mentioning the attention to detail over the planning and preparation for the event. The Chairman also gave appreciation for the Remembrance Sunday service held at St. Mary's Church on Sunday 12th November and thanked all those involved, especially for the mention of animals involved in conflict. Cllr Mannassi commended the young man who played the Last Post, expressing admiration of the ability to master the bugle.

Open Forum for Public Participation

Participant One raised concerns regarding anti-social behaviour at the Recreation Ground, in particular the incidents involving a motorbike. They explained that a log had been kept and video evidence was available. The Clerk requested that the resident contact the Cambridgeshire Constabulary to report the incident and that footage could be uploaded securely to the police to enable investigations to take place. The resident raised the difficulties in reporting matters. It was discussed that all incidents be reported to ensure that an accurate account of the anti-social behaviour is available.

Participant Two, a representative of the Fireworks Committee gave an overview of the Fireworks Event held on Saturday 4th November 2023. Following a post-event inspection of Camping Close, the area of the bonfire was agreed to be much improved on the previous year. Cllr Carl Cieluch had raised concerns about the tyre tracks, caused by heavy machinery but was reassured that the ground is recovering well. The participant spoke about stray embers which had caused concerns among spectators. This was partly due to the wind direction. All precautions had been taken to avoid this, however it was stated that the fireworks would be moved back by a further ten metres at next year's event. Initial reports for the amount raised for the local schools is in excess of £10,000.00

Matters Arising/Clerks Report.

The Clerk gave an update that assurance had been given by the CCC Highways Officer that a safety survey of footpaths would be conducted. It was requested that they be accompanied by a councillor to highlight areas of concern.

The Clerk gave an update that each grit bin would cost £140.00 plus VAT, locations would be verified by CCC. It was noted that Keene Fields as a private road would not be included as this is the responsibility of the residents association.

Cllr Chris Hine proposed grit bins be placed at Rivey Close and in Horn Lane, with exact location to be advised by Cambridgeshire County Council, at a cost of £280.00 plus VAT. Cllr Lee Gardner seconded. 9 in favour with one abstention. Agreed.

Consideration of the District and County Councillors Report for November 2023.

In addition to the written report County Councillor Henry Batchelor added the following.

- Anaerobic Digestion Plant – Public presentation at West Wickham Village Hall on 18.11.2023. Cllrs Kell, Mannassi and Lawrence-Foulds due to attend.

- Solar Farm Application covering a significant area between Linton, Balsham and Fulbourn of approx. 900 hectares being investigated by the landowner. A map of the area was requested by Linton Parish Council.

District Councillor John Batchelor added.

- The leader of SCDC had met with Michael Gove who has a vision for Cambridgeshire to include 250,000 houses but the viability of such a major development was questionable.

**Planning
Bartlow Road**

Cllr Kate Kell gave an update that the Assistant Clerk had chased an update on the hedging and the landscaping with enforcement, and will again request an update. A formal complaint would be raised due to the lack of responses received.

Horseheath Road.

Cllr Kate Kell advised that more information is expected by 29th November 2023. The Assistant Clerk to request an update from Lead Local Flood Authority (LLFA) and GCSP Planning in advance of the deadline.

Finance, Risk and Compliance (FR&C)

Grants & Funding

Update on Expression of Interest applications submitted to the Cambridgeshire Priorities Grant Fund and notification of the deadline for submission by 15th December 2023.

Solar Panels & Heat Pump - grant to be pursued by the Responsible Financial Officer (RFO) and Cllr Mannassi to meet the deadline.

Muga Lighting - grant to be pursued by the RFO to meet the deadline.

S106

Consideration of the Indemnity Agreement for the Bakers Lane development and if agreed, signing of the relevant documents. Cllr Chris Hine proposed that the Indemnity Agreement for the Bakers Lane development be agreed and signed. Cllr Kate Kell seconded. All Agreed.

Consideration of the Indemnity Agreement for the 20 Cambridge Road development and if agreed, signing of the relevant documents. Cllr Chris Hine proposed that the Indemnity Agreement for the 20 Cambridge Road development be agreed and signed. Cllr Kate Kell seconded. All Agreed.

Traffic & Highways

Highways

Consideration for a parishioner complaint regarding the parking at the bottom of Green Lane and suggestions to stop the parking on the grass verges.

Cllr Brian Cox proposed that a post and chain fence be erected on the verge at Green Lane to address parking on the verge. Cllr Lee Gardner seconded. 8 in favour with one abstention.

Consideration of the quote received from LHS to install post and chain fencing adjacent to Beech Way.

Cllr Karen Sanderson proposed that the quote from Local Handyman Services be accepted. Cllr Helen Lawrence-Foulds seconded. 8 in favour with one abstention. Agreed.

Notification and invitation for comments on the CCC Highways proposal for 50mph speed limit on the Bartlow Road between Bartlow and the A1307 roundabout.

Cllr Kate Kell requested comments be submitted supporting the change but that the Parish Council would like to suggest that 40mph would be more appropriate. It was also to be noted that the 30mph speed limit on Bartlow Road is included in the proposals for the 20mph scheme. Cllr Chris Hine seconded. 8 in favour with one abstention. Agreed.

Notification of the proposed design plan for the Local Highways Improvement (LHI) 23/24 and summary of planned works.

Cllr Brian Cox proposed that the recommendations from the working group be agreed, with the addition of clarification on all Mobile Speed Indicator Device (MSID) functioning in both directions, and that the MSID location on Balsam Road be on the right-hand side verge of Tower View. Cllr Carl Cieluch seconded. All Agreed.

Pavement Licence Application

Notification of the comments submitted to the County Councillor (CC) Henry Batchelor in relation to the Street Licence application for Flourish. For Information. The Clerk updated the Parish Council that comments had been submitted to CC Henry Batchelor supporting the pavement licence application for Flourish.

Events

Linton in Bloom

Cllr Merrie Mannassi thanked those involved in Linton in Bloom for the work involved to date, adding that the display looked lovely. Cllr Karen Sanderson advised the Parish Council that the Chalklands Community Garden has been invited to be included in the Open Gardens Scheme for 2024.

Churchyard

Update on the Churchyard paths following a Churchyard Working Group meeting held on Tuesday 17th October 2023.

Cllr Kate Kell advised the Full Council that it was felt, following a site visit, that the only solution to the issues of drainage and weeds on the paths would be to remove and re-lay the paths entirely.

This item was deferred, and quotes requested with site visits to take place with potential contractors to ensure the specification is accurate.

Recreation Ground

The Clerk advised that the Principal of Linton Village College (LVC) had been in contact with the Beacon Youth Trust (BYT) to discuss actions to be taken regarding anti-social behaviour. It was advised that parents would be informed, along with assemblies focusing on preventing anti-social behaviour. Cllr Helen Lawrence-Foulds offered to approach LVC to speak directly to students. Cllr Karen Sanderson referred to the recent "Empowering Young Voices in your Community" session and offered to help open lines of communication.

Consideration for the request for the placement of a memorial tree on the Recreation Ground.

Cllr Helen Lawrence-Foulds proposed that permission be granted to place a tree on the Recreation Ground and that the family be invited to discuss species and location with the tree warden. Cllr Chris Hine seconded. All Agreed.

Multi Use Games Area (MUGA)

Update on the recent opening of the MUGA on 21st October 2023. It was noted that the event was well attended. It was requested that signage in relation to the Bowls Green be removed.

Open Spaces

Notification of the successful application for Six Free Trees from South Cambridgeshire District Council.

Cllr Kate Kell proposed that the six free trees be ordered as Hawthorn and Rowan and the tree warden to decide on suitable locations. Cllr Karen Sanderson seconded. 8 in favour with one abstention. Agreed.

Youth

Consideration of the monthly report for October 2023 from the Beacon Youth Trust. Written report available.

Update following the Year 2, Quarter 2 Review meeting of the Service Level Agreement 2022-2025 held on Monday 16th October 2023. Written report available.

Meeting Dates

Consideration for the revised Meeting dates proposed for 2024. Cllr Chris Hine proposed the revised meeting dates be accepted. Cllr Karen Sanderson seconded. All Agreed.

Full Minutes are available on the Parish Council website. **Clerk.**

The Village Hall, Coles Lane, Linton, Cambridge CB21 4JS Tel: 891001
Clerks to the council – Mrs Jenny Seaward & Mrs Kate Dyer.
Email: enquiries@linton-pc.gov.uk
Website: www.lintoncambridgeshire-pc.gov.uk
Facebook: www.facebook.com/lintonpc
Office open: Monday - Friday 9am - noon.
By Appointment Only
 Full Council meetings are held at the Cathodeon Centre, commencing at 7.30pm on the third Thursday of the month.

WHAT'S ON High Street Linton CB21 4JT 

January.....

Wednesday 10 th	Quiz	7:30pm
Saturday 13 th	Karaoke	8pm
Wednesday 24 th	Rock 'n' Roll Bingo	7:30pm
Saturday 27 th	Live Entertainment – Matt Barden	8pm

Tuesday - Sunday Happy Kebab Burger van from 6pm


 www.AllstarCleaning.me.uk
 Your Local, Professional, Carpet and Upholstery Technician Dean
 16 years' experience
 Package to suit every level: Basic, Pet Treatment or Carpet Protector
 **Carpet moth removal and prevention**
 **Upholstery and rug cleaning services**
 Contact Dean on 01223 654652 or info@allstarcleaning.me.uk to make an appointment.
 Allstar Cleaning, 14 Hillway, Linton, CB21 4JE

lintonerown@yahoo.com www.erownallinton.co.uk
The Crown Inn
Monday-kitchen temporarily closed
Tuesday-Steak Night £11
Wednesday-Sausage & Mash £6.50
Thursday-Fish & Chips £8.50
Friday-Burger Night £10
 11, High Street, Linton, Cambs.
 01223 891759

Westlakes
 PAINTING & DECORATING
 Interior & Exterior

Mobile:
07917890752
 adam_westlake@hotmail.com

ClearTax
 & ACCOUNTING LTD
 Quality, friendly accounting services and taxation advice.
 Sole trader and small company specialist.
 Free initial consultation.
 ▼ We have a new address ▼
 Unit 1, The Old Stables, Yole Farm, Linton Road, Balsham, CB21 4HB.
01223 772326
 janine@cleartax.co.uk
 www.cleartax.co.uk

PSH Electrical Services
Rewires, New builds, Extra lights, Extra sockets, Repair works, Garden lighting, Showers
Registered NIC EIC domestic installer
 email
 pshelectrical27@gmail.com
 telephone 07867980738


CHRISTOPHER MARKHAM
 HOME & GARDEN SERVICES
 Interior/Exterior Decorating
 Fencing, Guttering
 Turfing, Garden Clearance
 Lawn & Hedge Cutting
 Decking & Patio Cleaning
 Patios & Driveways
 Call on
 (01223) 892889
 or 07973 294946
 No job too small...

PALMER & SON SCAFFOLDING LTD
 A local family run business with over 30 years' experience in the trade.
 All enquiries welcome with a free quotation on all jobs.
 All aspects of scaffold undertaken; no job too small.
 Contact: Martin on:
 Tel: 01223 892145
 Mobile: 07970348182
 palmerscaffolding@outlook.com

GARDENER
 N.C.H. QUALIFIED
 All garden maintenance including:
 Weeding – Mowing
 Hedge cutting – Turfing
 Garden clearance
 Shed /fence treatment
 Hard/soft landscaping

 For a friendly professional service please call:
Darryl Tilling
01223 892133
 or
07932 021277