

Parish Council meetings on 1st and 3rd Thursdays. Come and have your say
Established 1987

Over 2,350 copies distributed free in Linton, Hildersham, Hadstock & Bartlow

THE LINTON NEWS

www.linton.info. e-mail lneditor@linton.info

September 2006
Vol. 20 No 6
Publication Date Monday 4th September

E & E PLUMRIDGE
Design & Print
41 High Street
Linton
01223 891407

Take up thy pew and drive

At 5.15pm on Monday 31st July, local man Jock Mackenzie arrived at my house to warn me that a double container lorry intending to make a delivery to the church had been unable to negotiate Church Lane and had parked by the old Swan Inn. I phoned the church warden, Pam Richardson, who hurried to the scene.

At 5.30pm Jock returned to let me know that the lorry driver (a young Pole who had driven from Poland with the chairs) had started unloading them on the side of the High Street.

I too hurried to the scene. Several very large boxes lined the pavement and there were still another 20 to be unloaded!

With the kind permission of the young man behind the bar in the Dog and Duck, I made a phone call to Paintin's ... they were the only people I could think of with a large vehicle ... and then another call was made to Arthur and Linda Read.

Within minutes we had Richard and Rosemary Read's private car, two large cars with trailers driven by Arthur and Linda, and Giles Cox and sister Liz, and, thanks to the young lady from Sarah Chamberlain's flower shop, the use of their little red van. Then last but not



Pam Richardson (right) checks the boxes containing the chairs outside Swan Cottages

Pictures by Caroline Connell

least, Paintin's large black van, kindly driven over from Haverhill.

Matthew Paintin and another young man and various other people helped load up and unload at the other end and by 7.05pm the boxes were safely stacked at the back of the church.

It's at moments like these that you realise the great joy of living in a village where the sense of community is still alive and well.

On behalf of the rector and churchwardens of St Mary's, I would like to thank all those people who in a variety of ways saved the delivery of our new



The chairs take their final ride to the church

chairs from going completely pear-shaped, and also say thank you to all those villagers who stopped and expressed their concern as the situation unfolded. Lesley Gore, Licensed Lay Minister, St Mary's Church

Plenty of goodies to look at ... and an unexpected hug

DESPITE the adverse weather conditions – don't gardeners always complain – of prolonged rain followed by prolonged heat and drought, there was another magnificent display at the gardening club's show this year. Some unusual plants arrived including a blue/purple bellflower which swells like a balloon (hence its common name) as it grows, and a pittosporum whose white-edged green leaves give the impression of being grey.

Although there were slightly fewer adult entries than last year, there were more welcome exhibitors, and the children really excelled themselves with 68 entries from 17 youngsters. Holly Bowie, a new entrant, won the age seven and under cup with the most points, including a first for a huge strawberry plant grown from seed. She then audaciously entered the fruits in the adult strawberry class, unfortunately the only entry so she had no competition! Her brother Adam was a runner-up with Sam Clayton in the age eight to fourteen group which was won by Molly Gibbs, who has made a great contribution in recent years. Bella Gale and Clare Crossland were joint second in the younger group.

Our stalwart exhibitor Les Moulton won the most firsts, to no one's surprise, for his vegetables, beautiful gladioli and huge pot plants, while Val Spencer won the Jubilee Challenge cup for her white currants. With no challenge from Pecky Carver who was unable to compete this year, Carol Todd and Karen Johnson reigned supreme in the baking section. Committee member Dan Johnson bravely says he will try again despite a somewhat unsuccessful currant loaf!

Jenny Purves's unusually-coloured flower arrangement in a shoe was declared best overall flower exhibit, and the names of members Maurice Smith, who managed to produce apricots, Jan Sheppard, Susan Anderson, Ros Pink, Rosemary Harrison, Ron Pitkin and Leslie Allison cropped up more than once as winners or runners-up in the other sections. Many eye-catching subjects appeared in the photo section won by David Champion, but there was a moment of excitement when Enid Bald hugged a surprised Alex Todd, our president, when he presented her with the Endeavour cup for vegetables and fruit; a trophy given to someone who has not previously won a cup in that section.

Obviously, all these calculations must be done in record time, and a great deal of effort is put into this by those who man 'the chart'. In fact there are numerous people helping on the day and beforehand, and this year things were made easier by the several extra pairs of hands who volunteered, or perhaps were pressed.



Jenny Purves receives her cup from president Alex Todd

Picture by Mike Crofts

Thanks are due to everyone who played a part – those you see and those you don't – all ably steered by our tireless show secretary Susan Anderson. The club can indeed be proud to have staged another successful show, and a big thank you goes to the many visitors who came to view and take refreshments.

The summer break is nearly over and we look forward to seeing present members and newcomers at the AGM on 10th October and on the second Tuesday in each month for, we hope, inspiring and informative talks. Gloria Fidler 891800

See Camera Club: Page 4

Holly and Adam Bowie, two of the younger winners



Picture by Ron Pitkin

LINTON DIARY

To guarantee entry into this diary please ensure that your event is written into the diary in the Post Office. Details of items in bold type may be found elsewhere in this edition. You may also send an email with your event details to diary@linton.info, or use the form on www.linton.info

Weekly	
Junior badminton club, 10am, Sundays	Sports Centre
Slimming World, 7pm, Mondays	Cathodeon Centre
Whist Drive, 7.30pm, Mondays	Village Hall
Men's Keep Fit club, 8pm, Mondays	LVC
Ladies' netball, 7-8.30pm, Mondays	Sports Centre
Linton theatre workshop, 7.30pm, Mondays and Wednesdays	LVC
WEA, 10am, Tuesdays from 12 th September	VH
S Cambs housing surgery, 10-11.30am, Tuesdays, VH (FF)	
Story Time, 2.15-2.45pm, Tuesdays	Library
Linton Chess club, 7.30pm, Tuesdays	Cathodeon Centre
IT club, 7pm, Tuesdays	Cathodeon Centre
Ladies' badminton club, 8pm, Tuesdays	Sports Centre
Linton Granta bowls roll-ups, 2pm, Wednesdays	Rear of pavilion
Linton Radio Race Car club, 6-10pm, Wednesdays	VH
Tots in Tow, 10-11.30am, Wednesdays in term time	VH
LVC badminton club, 8-10pm, Thursdays	Sports Centre
Little Acorns, 10-11.30am, Thursdays	VH
Carpet Bowls, 7.30pm, Thursdays	VH
Bridge club, 7pm, Fridays	Cathodeon Centre
Tap dancing, 7.15-8pm, Fridays	VH
Granta Badminton club, 8-10pm, Fridays	Sports Centre

SEPTEMBER

1-30 The Coloured Pencil Society	Darryl Nantais Gallery
2 Farmers' market, 9.30am	LVC
3 Thurlow Fayre, 1-4pm	Thurlow Sportsground
5 WI, 7.30pm	Village Hall
6 Reading group, 8pm	Dog and Duck
7 Luncheon club, 12.15pm	The Crown
7 Parish council meeting, 8pm	Cathodeon Centre
9 Dads and tots, 9.30am	Village Hall
9 Historic churches bike ride, 10am-6pm	
9,10 Haddenham steam rally, 10am	Haddenham
10 Camera club, 10am	Village Hall
12 VIP group, 2pm	Chalklands
13 ACE trip to Clacton, 9.30am	Dog and Duck
16 Friends of St Mary's lunch, 12noon	Chalklands
17 Camera club, 11.15am	Village Hall
19 Chess club open evening, 7.30pm	Cathodeon Centre
19 Police surgery, 3pm	Library
21 Parish council meeting, 8pm	Cathodeon Centre
24 Cambridge glass fair, 10.30am	Chilford Hall
28 Hadstock music festival, 7.30pm	St Botolph's

OCTOBER

1, 3, 5, 7 Hadstock music festival, 7.30pm	St Botolph's
3 WI, 7.30pm	Village Hall
5 Luncheon club, 12.15pm	The Crown
5 Parish council meeting, 8pm	Cathodeon Centre

Refuse collection: 4th, 18th September, 2nd October.

Recycling collection: 11th, 25th September.

Library times: **Monday** Closed; **Tuesday** 10.30am-1pm, 2pm-5pm; **Wednesday** 2pm-5pm, 6pm-8pm; **Thursday** Closed; **Friday** 10.30am-1pm, 2pm-5pm, 6pm-8pm; **Saturday** 10am-12noon. **The Linton News can also be read online at www.linton.info**
Extra copies may be obtained from BP garage on the by-pass.

Too good for jumble ...

TO start the new season, offers of £10 or over are invited for a portable netball post, a Morphy Richards bread maker with instructions, a Hayter electric lawn mower, a BT Converse 300 telephone, a BT Converse 325 telephone with amplifier, a Canon BJC-2100 bubblejet printer and an Epson Perfection 1260 scanner. Offers of £20 or more are invited for a Brother Fax-1020 fax/phone/copier plus Audiophone digital answerphone.

The 16in Philips TV is still available and the Portmeirion coffee cups raised £15 for Save the Children.

For any of the above items or to offer an item valued at least £10 to profit a village or national charity with a Linton representative, please contact:

Kate France 891602, or email katefrance@linton48.freemove.co.uk

What a feast: a mouth-watering display of seasonal vegetables



Picture by Mike Crofts

THOUGHTS FROM THE GRANTA RANTA

I'M not a cyclist, more a walker and a driver but I can understand that, if you are one of the many people who do cycle round the village, the introduction of the one-way system in the High Street was an unwelcome change. Having to go up Coles Lane or use any of the alternative routes must seem a waste of time and energy. However, a couple of incidents lately have both concerned and annoyed me.

As we all know, the footpaths on the High Street are barely wide enough for two people to walk side by side, and in some places it has to be single file, yet when I was walking down there a few weeks ago I was confronted by two cyclists who were coming towards me on the footpath. In this situation we both have a problem: do I step off the pavement and risk being mown down from behind, or do they veer into the road probably having to go round a parked car, and risk a head-on clash with an approaching vehicle? Moreover had they met with an older, less agile person, or someone with a wheelchair or in a mobility vehicle the result could have been a nasty collision on the pavement.

More recently, when approaching the end of the one-way system at Coles Lane in my car I saw in front of me several cyclists who appeared to be racing up the hill and coming the wrong way into the one way at the narrowest part. There was certainly no room for a car and them at the same time, and though they succeeded in getting through the gap before I got there, they were putting themselves, and possibly me, at risk. No doubt it was exciting for them, but it was an excitement I could have done without.

So this is just a plea to all those on two wheels to think twice before falling into the temptation of 'bucking the system' and doing a quick pedal up the High Street, whether it be on the path or in the road. Nine times out of 10 you will probably get away with it, but at some point there is going to be an accident. Could you not consider a new version of the old adage and think that it might be 'better to be safe and push than ride and be sorry'?

Do you have anything that you would like to moan about? If so write and let us know and we may publish it.

A fare deal on bus passes at last

A NEW scheme, due to begin on the 1st October, entitles concessionary bus pass holders to free travel on all local bus services in Cambridgeshire and Peterborough after 9.30am on weekdays, and all day at weekends.

This includes the Cambridge park and ride service.

This new scheme was achieved by the city, county, district councils and the bus operators, who strove for a fairer way of spreading the funding.

This scheme will run until 1st April 2008 when the new national free scheme will be introduced by central government.

Bus passes are available from your district council

offices or from local post offices in your district.

There is also news on the Linton to Newmarket No 46 bus.

Please note that it now departs Linton High Street as follows:

Weekdays at 8.45am;
Saturday at 8.18am;
and arrives in Newmarket High Street:

Monday, Wednesday, Thursday and Friday at 9.40am; Tuesday at 9.33am; and Saturday at 9.23am.

Return times to Linton are: Weekdays at 12.20pm; Saturday at 12 noon.

Trisha Bear 892656
SCD Councillor
e-mail
cllr.bear@scams.gov.uk

Flu vaccination clinics at the health centre

YOU may already know that the manufacturers of flu vaccine have had trouble 'growing' the vaccine for this year's flu season. The delivery dates to doctors' surgeries have been delayed and this makes planning the clinics extremely difficult. The vaccine will, as usual, be prioritised by the government for those aged 65 and over and those under 65 who have particular risk factors.

As the Linton News goes to press, we still do not have a definite delivery date. As soon as we have a guaranteed date, we will organise our usual three Saturday morning clinics. Watch out for a poster at the health centre or the post office advertising the flu clinics and

then either call in or phone us (after 10.30am please) to make your appointment.

Flu vaccination will only be offered to those patients who are 65 and over, or those who fall in to one of the 'at risk' categories. Please do not ask for vaccination if you are under 65 and are fit, healthy and have no particular risk factors as we will have to refuse.

Please also be prepared to come to a Saturday morning clinic. We are very grateful to our staff who give up part of their weekend to provide these clinics, as it really is the only way that we can vaccinate 2500 people in such a short space of time.

Dr Hewlett & partners

Dad, spend quality time with a bacon sandwich and your tot

DADS and Tots started as a spin-off from Tots in Tow, the parent and toddler group meeting on Wednesdays at the village hall. All dads with pre-school children are welcome to join us for a cup of tea and a bacon sandwich on Saturdays 9th September, 7th October and 18th November from 9.30-11 am. Spend some quality time with your child. For more information, contact:

Sarah Thorne 891952

Successful K-Club approaches ninth year

LINTON'S own lottery will soon be entering its ninth year and now is the time to join if you are not already a member. The K-Club was launched in 1998 to raise funds for Linton Action for Youth, or LA4Y as it is better known. It has raised almost £14,000 to date, but this year we would like to expand club membership to around 400 in order to increase its

fund-raising potential.

It costs £12 for a year's membership, which runs from 1st October to 30th September, with over a half of the total 'take' going towards prize money. Indeed, this year's star prizes will amount to no less than £800, to be drawn in September. Look out for local publicity announcing where this will be held.

You can pick up a K-Club application form from either of the village newsagents or the post office. Failing that, ring me on the number below or email me, and I'll ensure you get as many as you need.

Please help us to build on the success of this fund-raising initiative in order to maintain our youth and family support activities in and around Lin-

ton. So don't delay, fill in your application form now and send it to me at 7 The Grove in Linton and I'll make out your personal membership card for the new K-Club year to 30th September 2007 - all for just £12.

Peter Dixon 890220
K-Club Promoter
Email Peter
@peterdixon.freeserve.co.uk

The lucky winners for August

THE winners of the August K-Club monthly draw were:
1st prize (£50)
Mrs S A Gillon (No 151)
2nd prize (£25)
T Rossiter (No 233)
3rd prize (£10)
Ken Head (No 068).

01223 890 965
THE ONLY NUMBER YOU WILL EVER NEED
LINTON CABS
"THERES ONLY ONE LINTON CABS"

GARAGE DOORS
SERVICED-REPAIRED
REPLACED
Spares for all makes
Free Estimate, Brochures and Advice
Steel - GRP - Timber
Sectional single or double skin
Roller Doors
A.B.C. Garage Door Systems
Telephone 01223 893798
or mobile 07774 499537
www.garagedoorsabc.co.uk
email@garagedoorsabc

The Crown Inn
Since 16th Century
Freehouse
Fine Wines & Real Ales
À la Carte Conservatory Restaurant
Bar Meals Sunday Roast
En-suite Accommodation
Great food in a relaxed atmosphere!
HIGH STREET, LINTON • BOOKINGS 01223 891759
fax: 01223 890899 Email: crown@fsmall.net

Annette's
Beauty & Well Being
At The Bank House
37 High Street, Linton CBI 6HS
Telephone: 01223 891900
Annette Jackson vtct iihht babtac & Reiki master
Beauty with a different approach, treating the whole person mind, body, and soul.
just take a little time for yourself & see how much better you can feel.....Heavenly
All treatments carried out in strict confidence - Gift vouchers available

Linton Complementary Health Centre
2b Bartlow Road, Linton
• Acupuncture, Peter White; MSc, MBAcC
Andrew Edgar MAc MBAcC
• Homeopathy, Meena Sharma; LCHC
• Massage, Peter White; MSc, Dip. Massage
• Osteopathy, Soraya Bish; BSc OST
• Shiatsu, Cindy Faulkner; BA, MRSS
Telephone: 0845 430 9120
Web Site: www.lintonhealth.co.uk

POINT CONTACT AT THE GRIP
Hygiene products business to business
For Clean plates, Clean glasses,
Clean prep. surfaces, Clean toilets
Economically, Purely, simply biologically
Many choices from a range of detergents -
degreasers - descalers - toilet rolls -
kitchen rolls - powders and liquids.
Daily deliveries- monthly accounts- c.o.d.
Cash and Collect
Telephone 01223 894000

FREE COMPETITIVE ESTIMATES
Watkins Joinery
• FITTED KITCHENS / BEDROOMS / WARDROBES
• CABINET MAKERS
• BESPOKE JOINERY
• DOORS / WINDOWS / STAIRS
• WOODEN FLOORING
• CONSERVATORIES
• EXTENSIONS / REFURBISHMENTS
• ALL WORK GUARANTEED
20 YEARS EXPERIENCE
INSURANCE WORK UNDERTAKEN
Tel.: 01223 890600 Mobile: 07802 885390
www.watkinsjoinery.freeserve.co.uk

Weston Oak Construction Ltd
Linton, Cambridge
Property Maintenance
Carpentry and Joinery Specialists
High Quality Decorating Service
All work undertaken
Free Estimates
Tel/Fax: 01223 890789
E-mail: Info@westonoak.co.uk
Web: www.westonoak.co.uk
Mob: 07736 273489
07900 492127

Readers write Readers write

Post and email addresses and deadline for letters on page 8. Please note: All letters for publication must be supplied with a full name and address to enable us to check authenticity. Letters may be edited.

Pets get sunstroke too

Dear Editor
I doubt if there were many people not feeling the effects of the extreme heat wave we were experiencing at the time of writing this letter. However, most of us have the advantage of finding somewhere cool or shady to escape these unusually high temperatures and we can shed some clothes if necessary.

Not so for the many dogs shut out in gardens for long periods, often with very little shade, especially during the midday heat, or confined indoors until the owner returns often after eight hours or more. The same goes for many lonely and forgotten rabbits and guinea pigs tucked away in sweltering hutches at the bottom of gardens.

Unfortunately the RSPCA are powerless to act at the moment. But, from April 2007 the new Animal Welfare Bill will

hopefully address many of these issues to reduce animal suffering by enabling preventative action to be taken before suffering occurs. The vast majority of pet owners and others involved with the care of animals have nothing to fear from this legislation. This Bill is aimed at those few misguided people who do not properly fulfil their responsibilities for the animals in their care.

I would ask people please to think carefully before leaving their pets for long periods, especially during the hot weather, and if it cannot be avoided, to make sure that they have adequate shade, plenty of clean water and in the case of a single dog that they have something to play with during the long boring hours they are left on their own.

Christine Ellis
Dolphin Close

OUR THANKS

Dear Editor
Further to the letter from Mr and Mrs Carder in the June issue.

On behalf of the family of Margaret Dunster who sadly passed away in April, I would like to thank the friends and relatives who kindly made donations in her memory to the British Heart Foundation.

Margaret was well known in the village and had worked for some years at Linton Village College.

A special thank you to Mr and Mrs Carder and neighbours of Crabtree Croft.

The sum of £243 was raised in her memory.

Many thanks to all.
Nora Marlow
Hillway

Dear Editor
I write regarding the recent Mick Goodman memorial cricket match.

Two evenly matched sides played in the true spirit of the game in which the football club were the victors. Monies totaling £262 were raised for the oncology unit at Addenbrooke's hospital, and many thanks go to Harriet Goodman and her family for their efforts on the day and everybody who helped out to make this annual event a success.

Ted Wright
Linton FC
See report on Page 6

Plastic cap plea

Dear Editor
Just what is it about the request *Please remove caps written on the side of the plastic recycling bins that is so difficult to understand?*

Do we want to lose this essential facility, sited in Coles Lane car park because the contractors can't cope with the wrong type of plastic?
Name and address supplied

Roses Beauty Salon
WEST WRATTING
Facials, Electrolysis, Waxing, Manicures etc, Mobile service available
Rene Guinot Agent
Tel Carol 01223 290450

jazzercise
A fitness programme incorporating aerobic dance and muscle strengthening & toning for all adult age groups and fitness levels starts in September
Saturdays 9.30-10.30am at **The Village Hall, Hadstock**
For more information call Sarah on 07703 422394 or email saffron.walden.jazzercise@googlemail.com

L.B. CABS LINTON
For all your long and short taxi trips
Airports
Courier Service available
PHONE LINTON 01223 892986

CHIMNEY SWEEP J. L. WIGHT
Guild of Master Sweepers.
Fully Insured
Qualified advice / problems solved.
Certificates issued.
01954 782284
20 Rampton Drift, Longstanton

N.C. Bowden ELECTRICAL
Electrical Installations
Periodic Inspection Reports
Tel: 01223 893 497
Mobile: 07976 838 373
NICEIC APPROVED CONTRACTOR

Tilly 2 Shoes of Steeple Bumpstead
Open Tuesday to Saturday 10am to 5pm
Beautiful shoes, bags & accessories for that special occasion
Large selection of bridal shoes including dyeing service for bridesmaids etc.
01440 730506
www.tilly2shoes.co.uk

BORDERS GARDEN SERVICES
For all your gardening and landscaping needs
Free quotes and advice available
Ben Mercer 01799 520044 or 07890 645692

K. CLAXTON Painter & Decorator
Interior & Exterior
Free Estimates
Tel: (01223) 892190
Mobile: 07910149353
Linton Based

GLENWOOD BOLTS & SCREWS LTD
SUPPLIERS OF QUALITY FASTENERS, FIXINGS & SILVERLINE TOOLS
Unit 2 Lintech Court
The Grip Industrial Estate, Linton
Cambridge, CB1 6XN
Tel: 01223 892095 / 893931
Fax: 01223 894122

Musical boxes and a pink garden party



Margaret Clark and Eileen Impey admire one of the more unusual musical boxes

Picture by Bel Griffiths

MMUSICAL boxes were the topic of the talk given by Doreen Whitelock at our August meeting. Doreen brought along part of her large collection of boxes and passed them around for us to examine. They were wound up and played their various tunes on the way round.

Doreen told us a little of the history of musical boxes which can be traced back to 3000BC, starting with bells and continuing with church bells in 1400AD such as St Clement Danes. In 1760 along came the chiming pocket watch and in 1800 snuff became popular; because of this the aristocracy wanted more elaborate boxes for their snuff so musical movements were added resulting in the boxes we are familiar with today. An interesting talk, and the sound of all the boxes playing their various tunes as they were passed around was an amazing experience.

The business side of the meeting followed the usual format. Mention was made of the pink garden party which was held in June's garden on 24th August.

A report on a walking tour,



A straggling group of walkers in the grounds of Blenheim Palace. (It must have been before lunch as it is not raining!)

Picture by Bel Griffiths

one of the courses available during the Cambridge federation visit to Denman college in July was given by Wendy Foster. Three of our members enjoyed a walk entitled *The hidden footpaths of Blenheim Palace* despite very hot weather and torrential rain.

A coffee morning held by Margaret Clark raised £26 for Cycle Cuba, an undertaking which will raise funds for Denman college, and a request was made for volunteers to man two teams for the quiz night on 3rd November. The evening ended with a musical quiz and

refreshments.

Our next meeting on 5th September is a bring and share harvest supper.

Have you recently moved to Linton? Would you like to meet new people and get to know more about your village?

Are you concerned about the rural community? Would you like to influence local and national issues?

Then come and join Linton WI. We meet on the first Tuesday of every month at 7.30pm in the village hall.

For more details contact: Brenda Smith 890125

BED & BREAKFAST
SPRINGFIELD HOUSE
14/16 Horn Lane, Linton
Regency house near Church, River views from bedrooms & guest lounge.
Tel 01223 891383

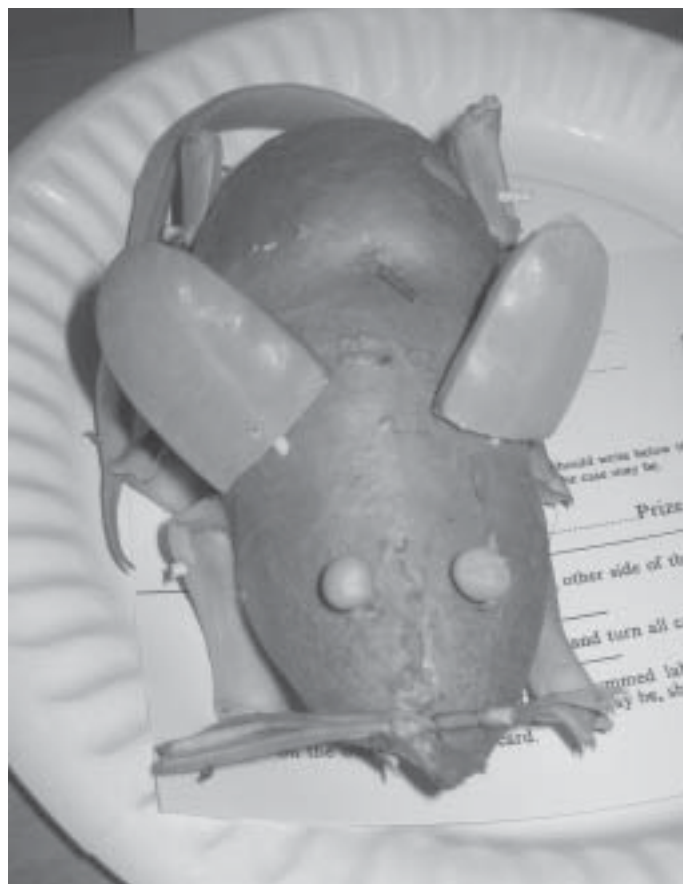
JUSTIN PEARSON
Reliable, High Quality
Painter & Decorator
for Interiors & Exteriors
Free Estimates
Tel 01223 565310
Mobile 0775 2469130

BED & BREAKFAST
Mrs Monica Clarkson
4 Harefield Rise, Linton
Tel: 01223 892988
Quiet modern bungalow
Families welcome
No Smoking

Brighters Housekeeping Services
Imagine...
Coming home to
• a clean house
• the ironing done
• time for yourself
For £9.60 per hour
We can provide you with your own regular housekeeper vetted for reliability and trustworthiness.
For a simple, effective housekeeping solution call us now.
Phone 0845 644 8214
www.brighters.co.uk

NOW stockists of Parkertex
Come in and let us help you
Friendly service
Easy parking
Check our web www.designer-drapes.com
Designer Drapes
Linton Road,
Hadstock, Cambs
01223 890556

Picture power from the camera club



Double take: peas and a potato make an impressive mouse
Picture by Mike Crofts

Photographers among the prize winners at annual show

THERE was a strong representation of Linton camera club entries in the photographic section of the gardening club annual show.

Many of these submissions were rewarded with prizes and acknowledgements. The members were also very active at the show, taking many pictures three of which we feature here.

At the August meeting, after viewing digital images from some previous awaydays, members discussed their plans for the club's exhibition.

Last year our efforts were rewarded by the large number of visitors who attended, many of whom commented that they felt they should have paid to come in, but the club has agreed that there will be no entry fee.

As part of the exhibition, Garth Collard will have his own section to display historical photographs of Linton, giving villagers another chance to talk to him and identify the people in the pictures.

There will be home-made cakes and a raffle in aid of the Alzheimer's Research Trust, so visitors can show their appreciation by supporting our chosen charity. The exhibition has been booked for Saturday 14th October at the village hall.

A change has been made to this month's awayday. On Sunday 10th September, the group will now be visiting the Haddenham Steam Rally. The main attractions will be working demonstrations of ploughing with heavy horses, threshing and wood-sawing.

More than 500 exhibits include old-time fair rides with steam-driven gallopers, fire and rescue and subaqua and marine model displays.

We will be meeting in the Coles Lane car park at 10am. New members are most welcome. Contact Roger Lapwood 891104 for any last minute changes of plan.

We are very lucky to be invited to visit photographer Conrad Webb on Sunday 17th September. We are meeting at the Coles Lane car park at 11.15am.

To find out more about the camera club, see our website www.lintoncameraclub.org.uk
Maureen Williams



Flower power: Lian Watkin and her granddaughter Bryony admire one of the exhibits at the show
Picture by Ron Pitkin



It's a small world: a miniature garden is created in a tray
Picture by Mike Crofts

It's your move ...

THE South Cambs chess club came into being in 1976. After playing in various locations, the club moved to Linton and became the Linton chess club, holding its meetings in the church hall. After many happy years, flooding both above and below and, finally, rats eating through the electric wiring forced us to move to the village hall in 2000.

We are now delighted to announce that from 5th September, we are moving into a smashing new venue – the Cathodeon Centre. This means that we will have much more space and as a result we are looking for new members. If you are the least bit interested in playing chess, please come along and talk about it to the chess club members.

We have some players of a very high standard and

also players like myself – I lose more often than I win but I get a lot of pleasure by playing this fascinating game. We are interested in players of any standard, including beginners, so please come along and see us. We will not charge a membership fee until you have had a chance to try us out.

Our first meeting at the Cathodeon centre is at 7.30pm on Tuesday 5th September and we will be there every Tuesday evening from that date onwards.

On 19th September, we are planning to hold an open evening. There will be opportunities for visitors to play a quick game and there will be a "simul" (one player against all-comers) by one of our best players. Tea and coffee will be available.

David Barnicoat 893509

It will be a fair to remember

THE organisers of the Cambridge Glass Fair are very pleased to announce that an exciting and long-awaited book, *Michael Harris: Mdina Glass and Isle of Wight Studio Glass*, is to be launched at the next event on 24th September.

The Guild of Glass Engravers and the Contemporary Glass Society as well as the Glass Association and the Glass Circle will be present to welcome new members and to talk about their respective organisations.

Officials from Ely Stained Glass Museum will also be promoting the museum's work within the cathedral and offering their range of courses in stained glass making.

In the main exhibition hall, you will be able to find Georgian stemware, stunning continental glass such as Lalique, Daum, Moser and Gallé, stylish Venetian and Scandinavian glass of all periods

and other collectable 20th century and earlier pieces. Paperweight collectors will be well served as there will be several specialists present.

For the widest and most spectacular selection of antique and collectable glass, this fair should not be missed.

A visit to Chilford Hall can be a day to remember, particularly if you manage to find that special piece to complete your collection or to decorate your home.

Music will be provided by solo guitarist Jerry Harrison who will be performing during lunch in the restaurant/bar area in the great hall.

The fair is open from 10.30am-4pm. For further information, please call 07887 762872 or visit our website www.cambridgeglassfair.com where you will find details and much more.

Paul Bishop

Ideal Landscapes All Area's Covered
by design Ltd

"All Work Completed In One Hit, Site-Left Tidy".
Fully Insured

- ✓ Ponds
- ✓ Paving
- ✓ Turfing
- ✓ Fencing
- ✓ Designs
- ✓ Decking
- ✓ Planting
- ✓ Restorations
- ✓ Tree Surgery
- ✓ Maintenance
- ✓ Water Features

CALL NOW
01223 892342
or Contact: Iain
07974 450930

Local Ironing Service

Fast friendly ironing service

Reasonable rates:

- Charged per hour or per kilo
- You decide

Collection & delivery available
Call Carolyn on:
01223 891762

White Chimneys Garden Design

Gardens individually designed to suit your lifestyle and tastes. A new local business. Please see the website for introductory offers.

Judith Rawlinson
BSc DipGD (InstGD)
Tel: 01223 897825
Email: Judithr2011@aol.com
www.whitechimneys-design.co.uk

Linton Computer Services

PC Sales & Repairs, Home Calls, Collection/Delivery, PC Servicing, Upgrade Services, Office & Home Networking, Data Recovery, Virus Help

Tel 01223 893006
Mob 07947 660810
www.lintoncs.co.uk
Email sales@lintoncs.co.uk

RUSSELL RESIDENTIAL Estate Agents

A family run and owned business with roots that can be traced back 135 years. The office in Sawston is run by local experienced staff who are successfully selling in Linton and surrounding villages. For expert advice on selling your village home call: **Glenn Coombe on 01223 493420**

Our Mortgage Adviser has access to 1000s of great mortgage deals from 100s of lenders. For free impartial mortgage advice call: **Phil Duff on 01223 569306**
[your home may be repossessed if you do not keep up repayments on your mortgage]

60 High Street, Sawston, Cambs CB2 4BG.
Tel: 01223 493420 Fax: 01223 493429
E-mail: sawston@russellres.co.uk web: www.russellres.co.uk

BED AND BREAKFAST
at
THE OLD BAKERY WEST WRATTING CAMBRIDGE CB1 5LU

Also cottage to rent for holidays, weekends and short-term breaks. (situated at West Wrattling) Sleeps six people

Tel: David or Carol (01223) 290492

P T Carpentry & Building Services
where quality is affordable

Loft conversions, renovations, extensions, kitchens, bathrooms, and all aspects of carpentry

Paul Turner

23 Rivey Way, Linton
Tel 01223 892174
Mob 07939 568767

Charlie Saville
Builder & Decorator

Tel/Fax: 01799 513413
mobile: 07721 372642

saville
established 1967

Little Hands Nursery School Linton
The Station House, Station Road

Morning, Afternoon, Lunch and Late Stay Sessions, 9am to 4pm during term time for children aged 2 to 5.

Pre-School sessions, to prepare for infant school. Holiday Clubs run during school holidays.

High staffing ratio, quality care.

For further information ring:
Marion: 897945 (school hours)
Jane: 503972 (at other times)

DRIVES & PATIOS **HOUSE EXTENSIONS**

HOME IMPROVEMENTS **PAINTING DECORATING**

A & T Groundworks Ltd

FRIENDLY SERVICE LARGE & MINI DIGGERS FOR HIRE
Call Ashley on 01799-520298 - Mobile 07803745637

your local florist

Flowers
SARAH CHAMBERLAIN

delivering worldwide

61a High Street, Linton
891740

The teddy bears' picnic went down a treat



Teddy bears, children and carers all enthralled by a story read by Anna McMahon

Picture by Roger Lapwood



IF you had gone down to the library on 15th August, you'd have been sure of a big surprise, as there was a mass invasion of bears arriving for a teddy bears' picnic. They all brought their owners, who also brought their mums and dads. There were 26 children and 14 parents crowded in to have a wonderful time listening to stories, singing songs, making crafts and eating biscuits, all with a teddy bear theme. Many thanks go to Hilary Crooks, Anna McMahon and Sarah Stratton who organised the event, and have led regular Tuesday afternoon story time sessions. Hilary and Anna are stepping down and the library service is very grateful to them for all their hard work. If anyone would be willing to

volunteer to take their place on a rota, library staff would be delighted to hear from them, so that the necessary steps can be taken. Just call in during opening hours. Story times are tremendous fun for small children (and adults) and are an excellent opportunity for parents to introduce their youngsters to the library. But we do need help from volunteers to keep them going. Linda Pearson, Supervisor Linton Library

Chips with everything at our club

COMPUTERS and electronic devices containing them are increasingly part of everyday life for many of us. When things go wrong, we turn to handbooks, friends and long queues for telephone support. When all else fails the local tip beckons. There is another source of help. Linton IT Club. Derek Birch set up the Linton IT Club to provide assistance to those who had been born before the silicon chip had been invented, and who needed a caring introduction to the world of mice and e-mail. More than 100 local people have been through the door of

the Cathodeon Centre and many have gone on to buy their own computers and installed their own software. The club has also provided help with printers, digital cameras, graphics software, websites, and even GPS equipment. Now after over five years Derek is handing over the helm but continues to be the group founder, whose vision brought the Cathodeon trustees, the library service and a grant from Help the Aged together, to provide the equipment, space and connection to the outside world, which allowed the Linton Senior IT Club to start.

A big thank you Derek. The group renamed itself Linton IT Club some years ago to reflect the fact that we now try to help all adults with computer related problems. Those who come for help frequently stay and provide help for other visitors. We never know all the answers. If you need assistance or you have time to help others, come along to the Cathodeon Centre on a Tuesday night between 7-9pm - we would be pleased to see you. By the way we don't fix fried chips! Mike Crofts 893619

Hadstock stages its first music festival



This line drawing of the church was taken from an image donated to St Botolph's by the late artist's family; unfortunately we do not have their name.

THE Friends of St Botolph's Hadstock, in association with the Guildhall school of music and drama, have held a series of highly acclaimed fund-raising concerts in the church this year. As a result of the success of these concerts and at the suggestion of Hadstock resident, Bernard Lanskey, who is the assistant director of music at the Guildhall school, the friends of St Botolph's have planned the first Hadstock music festival. All concerts will take place in St Botolph's church, a beautiful and simple building with remarkable acoustic qualities set in the heart of the village. The concerts are:
28th September: Felicitas Fuchs and Bernard Lanskey - an evening focusing on 19th century Vienna.
1st October: Cambridge Voices - spirituals, folk songs and close harmony.

3rd October: Guildhall school brings high-lights from the 2006 Paxos international music festival.
5th October: Aki Sauliere, Bernard Lanskey, Felicitas Fuchs and Daniel Tong - an exploration of the world of the Schumanns.
7th October: Bernard Lanskey, Aki Sauliere, Felicitas Fuchs and Raphael Bell; Brahms and the summer of 1886. As usual tickets and information will be available from Saffron Walden tourist information office, Market Square, Saffron Walden. Tel: 01799 510444. If you would like full programme details you can visit our website: www.hadstockchurch.org, contact us by email at hadstocker@aol.com or by post Yew Trees Farmhouse, Linton Road, Hadstock, Cambridge CB1 6NU. Sue Walker

An afternoon for toddlers

ARE you the mum, dad, granny or carer of a baby or toddler? Do you need something to do on a Tuesday afternoon? Why not try Hadstock Toddler Group? We are a small and friendly group who meet from 2-4pm every Tuesday afternoon during term time in Hadstock village hall, next to the church.

It is a great way to make new friends or simply to let the children burn off some energy while you have a relaxing cup of tea. We currently have about 10 children from Hadstock, Ashdon and Linton aged between five months and four years and would love to see some new faces. Come along and try us, or for more information please contact: Isabel Fish 890924

Cornerstone Community Church 

Meets at the Cathodeon Centre 10.30am Sundays

Everyone welcome

www.lintoncornerstone.org

Chippy's Fish & Chips
 Now in Linton
 Every Thursday 5.00 - 7.30pm

Outside of Linton Junior School Wheatsheaf Way

Fresh fish daily Cod fillet, Plaice fillet, Rock eel, Skate wings, Haddock fillet. Scampi, BBQ Chicken, Pukka Pies, Burgers, Chicken Nuggets, Saveloys, Sausages. Mushy Peas, Curry Sauce. Call us to place an order on 07821866602 Also at Balsham Wednesday Night 5.00- 7.30

SB Printing Co.
 Litho Printing
 Hot Foil · Embossing
 Cutting and Creasing

Telephone: **01233 891286**
 E-mail: info@sbprinting.co.uk
 www.sbprinting.co.uk

31 Cambridge Road, Linton, Cambridge CB1 6NN

NRS CARPETS

HOME SELECTION
 FREE MEASURING & ESTIMATING

All types of flooring available

Tel: 01223 893634
 Mobile: 07885 173113

CHRIS FLETCHER
 CARPENTRY & BUILDING MAINTENANCE

KITCHEN & BATHROOM FITTING,
 DOORS & WINDOWS REPLACED
 PATIOS & LANDSCAPING
 CONSERVATORIES
 GARAGE CONVERSIONS

For information or quotation:
01223 897233
07775 538095

The Dog & Duck
 63 High Street, Linton
 Tel: 01223 891257

"The Dog & Duck Dining Experience"
 AROUND THE GLOBE SUPPER EVENINGS
BOOK NOW! for MONDAY 4th September
A Jamaican Supper Evening
 Pre-bookings only - these evenings are gaining popularity!
 Come along and enjoy a typical Jamaican meal including Jerk Pork, Solomon Grundy & Rum Down
 Featuring live Caribbean entertainment
 THE BLUE STEEL
 Check our website www.dogandducklinton.co.uk for our Supper Event Brochure or pop in!

Julian's Photography
 38 The Grove Linton Cambridge

Wedding Photography
 Special offer on mid week weddings Monday to Thursday
 ...on your very special day let the memories last and linger on...
 Tel (01223) 892056

A MEMBER OF THE SOCIETY OF WEDDING PHOTOGRAPHERS

Gas Care 

Your local CORGI Gas installer - 25 Years Experience

For all your domestic Plumbing, Heating and Gas Appliance Installation and Maintenance Requirements

FreePhone 0800 1957845
 Mobile: 07973 262776
 e-mail: info@gascare.gb.com
 website: www.gascare.gb.com



The sound of leather on willow is still heard in Linton

The Mick Goodman Memorial Match: 9th July

DESPITE the competing attractions of the Wimbledon men's singles final, FIFA world cup final and the Flying Legends airshow at nearby Duxford, Linton village cricket club and Linton Granta football club were well supported in their efforts to raise money for charity in memory of one of their dearest friends.

A cracking game of cricket, with more than 450 runs scored ensured that the crowd were richly entertained, with Linton Granta football club regaining the trophy it lost to the cricket club last year.

After a quick tea, the sides turned around and the LVCC reply began. The captain on the day will confess to a touch of sentimentality in allowing Ollie and Ben Priestley to open the innings together in Ollie's last match with us before he moves on to new challenges in the West country. Sadly, the gods chose to mock this grand gesture, sending both brothers back to the pavillion without scoring.

The LVCC chase was always going to be challenging, but it was only the contribution of Allan Campbell which made the game as close as it was.

The game was competitive, but played in a great spirit, as befits a proper friendly. Mick would have loved it. A total of £262.50 was raised for the oncology endowment fund at Addenbrooke's hospital. Thanks to everyone involved for their support.

President's Day: Sunday 6th August.

A HUGE thank you to everyone who helped with, participated in or supported President's Day.

A special thank you to the Hoskin family who visited from Oxfordshire for the game; it was lovely to see you. Also to Mark Gooden who paid for his participation with torn elbow ligaments after a tumble in the field. Get well soon, Mark!

The batting highlight of the day was once again a brutal innings from Allan "Big Al" Campbell. It was only Allan's selflessness in giving away the strike in the last over that prevented him from securing his second Sunday century of the season.

On the bowling front it was a joy to see the spinners Josh Newman and John Richardson operating in tandem. It would be disingenuous of me to highlight the age gap between them; but suffice it to say it was a classic case of the master and the apprentice in harmony.

It was also really encouraging to see that 13-year-old Sam Dew was by no means out of his depth, picking up the last two wickets for only five runs.

The weather was kind to us, the cricket was friendly but competitive, and we managed to raise £468.70 towards club funds. This represents a huge contribution towards helping us keep cricket alive in the village, so once again, thanks everyone.

Hans Pinkard



The evergreen Mick Morris opening the bowling for the President's XI

Picture by Hans Pinkard

POT POURRI (21)

The radius of the 'square'?

IMAGINE a circle inscribed inside a square where the circle touches all four sides. Now if a small rectangle was placed between the circle and the boundary of the square, in the bottom right-hand corner, such that the rectangle's corner just touched the inscribed circle, and if the rectangle height was taken as y cms and the distance from the left-hand side of the outer square to the rectangle was x cms, what is the radius of the circle in terms of x and y cms?

Solution to No 20: What are the ages?

The trick is to break the number 36 into its products and then use the products as a sum, eg $36 = 9 \times 2 \times 2$ or $6 \times 6 \times 1$ which sums to 13 in both cases, and the clue states which of these it must be, namely (iii) giving the ages as 9, 2 and 2.

Urania

Safina has a new partner

WHAT a busy time we have had at the zoo these past few weeks.

We now have a new addition to our lion family. Zuri was born at West Midland safari park and being a different bloodline from our pride he will make a perfect partner for Safina, the lion cub born here in November. Zuri is Swahili for 'handsome one', which we are sure he will be.

On 17th August Zuri was photographed with Louise and Jamie Redknapp and Steve and Donna Collins who were visiting the zoo to help promote an African Wildlife fund-raising campaign. Keep your eyes on some very high-profile national magazines for the full story.

Thanks to everyone for the used stamps. Please keep them coming, especially foreign stamps which are of higher value to the dealers. All of the money that we raise aids our



Zuri, 'the handsome one' arrives at Linton zoo. He will make a perfect partner for Safina, the lion cub born at the zoo last year

Picture by Kim Simmons

conservation fund. There are lots of keeper talks, animal feeds and activities on at the weekends and

throughout the school holidays; most are designed to get you much closer to the animals than normal. For up-to-

date information, visit our website www.lintonzoo.com or telephone 891308.

Kim Simmons

Reliable Local Builder

From conversions to plastering, renovations to tiling and decorating-

No job too small

Tel: 01223 890769
Mobile 07813 070369

A & R PLASTERING

All aspects of plastering undertaken:

Plasterboarding
Rendering

No job too small


19 years experience
Free estimates

Linton based: 01223 890228
Mobile: 0774 8627920

Linton


Repairs
NEW & USED
BIKES & PARTS
COLLECT & DELIVER
Phone Alex on:
07813389503
or 892595

NEIL CLAXTON

Professional Decorator 

20 years experience
Interior & Exterior
Free Estimates

Tel: 01223 893487
Mobile: 07724 073045

 THE KELVIN SCHOOL OF MOTORING
★ DOE, ADI and MIAM
16 BACK ROAD, LINTON
 Cambridge 892263

PLUMBLINE

Plumbing & Heating
RELIABLE COMPETITIVE
FRIENDLY SERVICE

Linton
01223 893903

Don't delay call today

A.J. COPELAND & CO.

Chartered Accountants, Linton

Audit, Accountancy, Tax and Consultancy Services for Business and Individuals

Computerised Self Assessment Tax Return Service

For FREE initial consultation phone
01799 506602

ALL TILING WORK UNDERTAKEN

 CONTRACTS

TERRACOTTA, CERAMIC, MARBLE, QUARRY TILES

NO JOB TOO SMALL
ESTIMATES FREE

Tel: 01223 891372

LINTON PAVING COMPANY

PROPERTY MAINTENANCE

BLOCK PAVING & GRAVEL
DRIVES, PATIOS, FENCING,
INTERNAL & EXTERNAL
PAINTING,
GENERAL REPAIRS.
NO JOB TOO SMALL.
LOCAL, RELIABLE AND
FRIENDLY SERVICE.
FREE QUOTATIONS

Tel: 01223 890060
07765 594398
lintonpaving@aol.com

ABSOLUTE PLUMBING

CITY & GUILDS QUALIFIED

FOR ALL DOMESTIC
PLUMBING & REPAIRS

APPLIANCE CONNECTIONS
BLOCKED DRAINS

BATHROOM DESIGN &
INSTALLATION SERVICE

01223 892133
07981 904895

EMERGENCY 24 HOUR SERVICE

TIM PHILLIPS & Co.

Accountants

Independent, specialist service for:
Small Businesses - Self Assessment
Personal Taxation

The 'One-Stop Shop' for your Accounts and Tax Returns

You do not have to contact your existing accountant when you decide to change over to us - the formalities are done for you.

Copley Hill Business Park, Babraham
Tel: 01223 830044. www.TPaccounts.co.uk



Uni-sex Hairdressers

12 High Street Linton Cambridge
Telephone (01223) 892648

Sarah & Jo From local Area would like to welcome You.

Mon Closed
Tues 9-6 Wed 10-7 Thurs 9-6 Fri 8.30-5
Saturday 8-1

O.A.P. Rates Tuesday & Thursday

PLODDING ALONG

An update on police matters

THE next police surgery will be at 3pm on Tuesday 19th September in Linton library.

Possession of cannabis

In recent weeks we have dealt with a number of parties where one or more people were found with cannabis in the Linton area. To clarify, the drug is not legalised and will always be dealt with appropriately. If you are found in possession of a small amount of cannabis on the first occasion, you will be given a street warning where a police officer will complete a form which you will have to sign and will take the cannabis from you.

If you are then caught again you will be arrested and further action will be taken. Please be aware that if you are stopped and found to have cannabis this will be recorded.

If you believe there is drug dealing/taking in any area, please let us know. We will ensure that action is taken and all individuals involved are dealt with appropriately. We already regularly patrol hotspot areas and will check any suspicious vehicles.

Distraction burglary

Unfortunately these despicable crimes continue to target the elderly.

Please look out for your elderly/vulnerable neighbours and think as you answer your front door. On the most recent occasion a man entered a home in Castle Camps at lunchtime. He walked in through an open back door, offered items for sale and then took money from the elderly victim.

If you see anyone suspicious in your area, please get a description and registration number of any vehicle and call the police.

You can contact your local neighbourhood team on 0845 4564564 and ask for PC Addison-Atkinson or PCSO Dawn Brock.

You can also register for E-Cops at www.cambs.police.uk/signup/ecops or call our mobiles: (PC A-A 07740 734974 or PCSO Brock 07736 08552) when we are on duty.

Always call 999 in an emergency.

To report an incident or crime, please ensure you report through the control room on 0845 4564564 as this will create an electronic record which we can access, or it can be dealt with by reactive officers if we are not on duty.

Dawn Brock
PCSO 7051

NEWS IN BRIEF

Change of day

PLEASE note that South Cambs housing surgery is changing its day from a Wednesday to a Tuesday. It will now be held from 10-11.30am on alternate Tuesdays upstairs in the village hall. Just call in.

Sue Parry, clerk to Linton parish council
891001



PAULINE'S
CHILDCARE IN
LINTON
FOR UNDER FIVES
Ofsted registered
Monday – Friday
Ring for details
01223 891890

ALAN NOAKES
Domestic Plumbing
Services
Bathroom/Shower installation
Burst/Leaking pipes repairs
Washing Machine &
Dishwasher Installations
Pumps/Tanks/Cylinders
Immersion replacements
NO JOB TOO SMALL
Call: 01223 893075
mobile: 07968327782
No Call Out Charge-Free Estimate

Carpentry, Plumbing, Tiling
Door / Window Replacement
Kitchen / Bathroom Refitting
Fencing, Decking, Gardening
Painting, Decorating
Flat Pack Assembly

Property Maintenance
Steve Jackson
Service Engineer

All domestic appliance repairs,
15 years industry experience.
Very reasonable rates. (Home) 01223 893114 / 893896
Quick & reliable service. (Mobile) 07963 854653

Steve Jackson

Linton Community Sports Centre
The **FITNESS Suite**

Whatever your fitness need, come & see our new range of fitness equipment, changing rooms & public-only entrance
Now open throughout the school day, & open 52 weeks of the year!

NEW! Floodlit All Weather Football Pitch
For more information—call or email now!

Tel: 01223 890248
E-mail: lintoncommunitysportscentre@hotmail.co.uk



LINTON COUNTRY DIARY by Darryl Nantais

Illustrated by Maureen Williams

The rescue and rearing of Romulus and Icarus

UNDER the spell of cricket-rasping hot and stormy weather, the martin's nest had cracked, dried and crashed to earth. Inside were four, four-day-old chicks, cushioned by the capsule lining; their future uncertain. Karen Ennew knew she must act quickly, raising the alarm, so when David Urwin called I sped off to the rescue. Despite an extensive search, we found only two remaining.

Romulus and Icarus were transported in a small box together with some of the nest-building material and foetid guano to my home.

I have hand-reared dozens of birds in my life but never house-martins. These miniature peregrine-like creatures feed on the wing, late evening and early morning, so mealtime and preparation was to be a constant job.

I began by grinding catfood with a pestle and mortar. With the aid of a small plastic syringe I managed to prise open their beaks, and pump a little of the food mixture and water down their gullets every two hours. I knew from experience the first 24 hours were going to be critical, but they were soon gulping on the nozzle for more, and survived. In fact they were doing rather better than myself.

Upon the fifth night I'd fallen asleep during feeding time and awoke to find the twins nestling in the hair on my chest and oh dear, there were other things too, not to mention feather mites; fortunately harmless to humans.

A week later I began adding crushed insects to their diet, caught in the fishing net usually at night around the buddleia, and spreading feeds to every three to four hours. Fellow artist Yasmin could see the black tell-tale rings around the eyes of a nursing foster father, and kindly offered to relieve me of my parental role for a night. Two days later, exhausted and grumpy I accepted and was grateful for a wonderful dreamless slumber. By now their downy fur had turned into deep blue feathers, wide wings and tails. White markings developed, so with thumb and index finger I would preen them daily, while playing a recording of house martins.

The twins, as I affectionately called them, had already imprinted upon me, shuffling into the palm of my hand should I lay

it nearby. I was careful not to risk any long-term behavioural response so Romulus and Icarus were kept in the semi-dark for much of the time. For me, despite some sleep deprivation, life went on pretty much as usual. This meant the birds were by my side whilst I worked, came with me to visit clients, friends and even relatives in hospital. They also went on a trip down the Ouse.

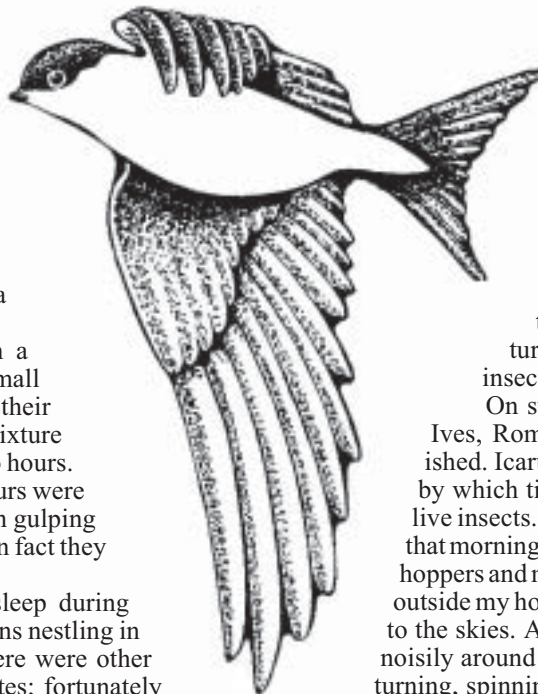
These two tiny birds brought such joy to countless people who marvelled at the miracle of their beauty and life. Twice daily from this point on I would stand for 20 minutes with a bird in each hand like scales and balance with rising and falling arms. This caused them to exercise their wings with a flap-flap-flap on the downward stroke. Romulus was the stronger of the two, suddenly refusing my special mixture via the syringe, accepting only live insects from my fingers.

On such a day while teaching the birds in St Ives, Romulus unexpectedly took flight and vanished. Icarus however, stayed for another four days, by which time he also refused the feed in favour of live insects. Now I knew he too was ready to leave, so that morning, stuffed with dozens of bluebottles, grasshoppers and mosquitoes, he was raised high in my palm outside my home and whoosh! Up, up and away he took to the skies. At first his flight was awkward, fluttering noisily around and around, but then he gained velocity, turning, spinning and stalling before swooping over the rooftops and low to the ground.

Neighbours stopped to watch as Icarus came to rest a couple of times, whizzing close by I glimpsed him picking off flies on the wing. Still higher he flew to spiral and glide until we lost sight of him, but that evening I saw 20 or more circling overhead and somehow knew he was there, free, and with his own kind.

The lady on TV praised God for her fighting son, whose warring death she believed rewarded him with paradise. I wish she could have seen the miracle of Romulus and Icarus and known the paradise on earth. Though all our lives are valuable, and goodness knows that nature is inexplicably cruel enough, for all the bombs that fell in August I saw not one mention of the animals maimed, killed or displaced by our futile wars!

Darryl's country diary should return to page 8 next month.



Fitness centre brings clubs a new lease of life

AS well as triggering an influx of individual members, the new fitness suite at the village college sports centre has added an extra dimension to the activities of the sports clubs meeting there.

The clubs, having patiently endured the disruption of the rebuilding programme, are now reaping the benefits. Members of the Monday men's keep fit club, for instance – now enjoying its second decade at the sports centre – have gained enormously from the sheer variety and quantity of equipment now available.

As well as enjoying the ben-

efits of the new fitness suite, the other elements of the Monday club's activities have continued as before; the circuit training, then the basketball or racquet sports to end the active part of the evening. The club still finishes in the time-honoured way with a beer, proving that they take keeping fit seriously, but not too seriously.

Members' ages currently range from 30s to 60s. Some of the founder members, who were already in their forties or fifties when the club began, are still as active – and nearly as fit – as when the club was first formed, and show no signs of giving up. The new facili-

ties have certainly rekindled their enthusiasm, and it's probably the only time you'll find 20% of the parish council at the sports centre.

By using the centre for just one evening a week, the various clubs offer a way to enjoy its benefits for a modest outlay. With winter approaching, people find that indoor fitness facilities are particularly attractive and being part of a club makes it more fun.

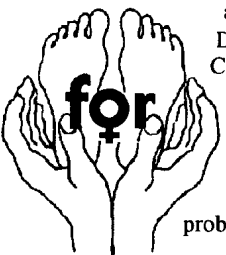
Bob Hammett (891372) has all the details of the Monday club, but new members are welcome simply to turn up after 8pm any Monday.

Andrew Gore



Spot the parish councillor
Pictures by Peter Mercer

Problems with your health? Stressed? Feeling run down?
Back conditions, Migraine Sinus, Asthma, Allergies, Stress and Tension, Bronchitis, Digestive problems, IBS, Constipation, Kidney and Bladder problems, Depression, High blood pressure, Lethargy, Circulation problems, M.E., Menopausal problems, Run down feeling
Reflexology
Reflexology is the answer for many women and may help you. It will relax and rebalance your body.
Women
June Keeble
M.BSR. BC.MA.
NFSH Healer
offers you a caring, professional service
Appointments, inquiries
894948 (Linton)



Students 20% off
Special Kids Prices
THE CUTTING ROOM
37 Bartlow Road, Linton
Tel: Pippa (01223) 890890
OPENING TIMES
Mon 9-5 pm
Tues 9-5 pm
Wed 9-7 pm
Thurs 9-7 pm
Fri 9-5 pm
Sat 9-3 pm
Senior Citizens
Monday & Tuesday
Late opening until 7 pm on
Wednesday & Thursday

Nina, Jo & Claire welcome you to
BOYZ 2 MEN BARBER SHOP
Opening Hours:
Monday 8:30am - 6pm
Tuesday 8:30am - 6pm
Wednesday 9:00am - 8pm
Thursday 8:30am - 8pm
Friday 8:30am - 6pm
Saturday 8:00am - 4pm
Fully air conditioned
LATE EVENINGS 'TIL 8PM
Wednesday - Thursday
AND every other Sunday
10am - 1pm
Special rates for senior citizens Monday to Friday
113 High Street, Linton
Tel: 01223 894481



MALLYON & DONALDSON
Linton
Specialising in both Modern and Traditional building methods.
Tel: 01223 891267
Mob: 07941 220868
All contracts finished to a high standard.
Reliable service. Local references available.



The Derbyshire Post

WHEN I took over the Linton Village College headship in January I began to get particularly interested in the original 1937 listed building. It is now in a state of considerable disrepair; bricks need repointing, the windows are rusted up and need refurbishment (the Crittall windows would cost around £1 million to restore, I am told), art deco design features need bringing out and some of the interior function rooms are in drastic need of a facelift. The Pegasus room, which used to house the village library is a gorgeous semi-circular shape, but is poorly heated and badly panelled. It is now used primarily for community ICT classes because it is too small for even the most modest school class. The Chilford room, which was once rather grand and attractive is tatty; flooring and panels need replacing so that it would feel like a sophisticated adult work space and the community common room needs equal amounts of attention.

The college has never had the funding to attempt such restoration and there are other complexities too: this building has been the main thoroughfare of the college and as such has needed to be fit for modern teaching purposes (hence the covering up of original features like the wooden and stone flooring which made an unnecessary amount of noise in the corridors).

The new building scheme brings with it all kinds of possibilities for our listed building, however. From 2010 it will no longer be the main school entrance and will become a student support area and the adult community rooms can be returned to the Broadening Education partnership for their original purpose. I have recently been in discussion with the Linton historical society and the parish council about establishing the village archive in the Pegasus building; this seems a wholly appropriate use of this community facility and it pleases me to think that the room will once more be a library (of sorts).

As for the restoration, the county council is backing this notion and beginning to examine the size of the project through the county architects, Mouchel Parkman. The money to support these ventures however, will need to come through bids and fundraising endeavours, one of which will be to the Heritage Lottery. We would hope to refurbish so that the completion of the heritage project is in line with the completion of the new building. In order to do any of this we will need expressions of support from the community.

If you are in favour of the Linton village college restoration project, I would love to hear from you. Please email caroline.derbyshire@lvc.org with an expression of your support. I can use all such evidence in the Heritage Lottery bid.

Caroline Derbyshire
Principal

Successful slimming with Tracy

TRACY Stressing, who became a Slimming World consultant after losing 80lb (nearly six stone) herself is thrilled to have helped so many members.

The Linton group, since Tracy took over as the permanent consultant in March this year, has lost a combined weight of more than 600lb, which is more than 42 stone. She also has another Slimming World group in Trumpington.

Tracy said: "My groups are amazing and I am so proud of all my members to have such incredible weight losses. I am really quite lost for words and, as my members will tell you, this is a situation you will rarely see."

Tracy, who has been at her target weight for a year now reached the semi-finals of the Consultant Slimmer of the Year competition run by Slimming World. She was short-listed from hundreds to the semi-finals of 30 consultants.

"I was honoured to have got through to the semi-finals," Tracy said. She won a bottle of champagne suitably engraved, and a certificate. Her members were so thrilled that she had got this far that they signed a good luck card for her.

Tracy has just organised her "Target member of the year" competition and a new contest for "Young slimmer of the year". This is the first time that this has been run and the results were fantastic.

Tracy's Linton Slimming World group meets at the Cathodeon Centre at 7pm every Monday evening. If you would like to join or want more information about Slimming World, please contact:

Tracy Stressing
01763 247252

This month you will find Darryl's Country Diary on Page 7; he will return to Page 8 next month.

PLANNING APPLICATIONS

S/1463/06/LB A Flynn, 75 High Street, Linton. Internal and external alterations – removal of partition between kitchen and lobby, removal of kitchen window and replacement by glazed French doors with small double glazed window and installation of double glazed window in former lobby door opening.

S/1475/06/F Mr and Mrs Read, 4 The Furrells, Linton. Conservatory.

S/1506/06/RM Dr and Mrs Parry-Smith, Land at 99 High Street (Access via Back Road), Linton. Dwelling.

S/1616/06/A Greene King Pub and Partners, The Moats, Little Linton. Sign.

S/1618/06/F Mr and Mrs P Fowkes, 5 Green Lane, Linton. Replacement dwelling.

S/1619/06/F Mrs Mallyon and Mr Dutnall, 23 Back Road, Linton. Extension.

BED and BREAKFAST
ANN & GEORGE PEAKE
Linton Heights
36 Wheatsheaf Way, Linton
Tel: (01223) 892516
Comfortable & friendly

IMPROVE YOUR SPANISH AT HOME
experienced teacher
lessons in your own home
free initial assessment/consultation
If you are interested in improving your Spanish, contact:
Susan Hodges (01223) 891521
or: sjhm2@yahoo.co.uk



Yes you can at Slimming World we're full of surprises
Come and join us
Discover the amazing you
Linton Cathodeon Centre
High Street
Monday 7.00pm
Tel: Tracy 01763 247252

The Way We Were

by Garth Collard

Linton losses on the Somme during those terrible months from July to November 1916

THIS year marks the 90th anniversary of the battle of the Somme when more than 115,000 British and Empire soldiers died during the five-month battle, and casualties on all sides exceeded one million.

On 1st July three Linton men were killed near Albert in the first wave of General Haig's offensive – Rowland Clarke, 25, of Townsend's Cottages (once opposite the Waggon and Horses pub), George Fitch, 28, and George Shore, of Horseheath Lodge. Telegrams informing parents of their deaths reached the village within three weeks.

John Kemp who lived in the High Street was badly wounded on that day and lay in a field until it was dark before crawling back to our trenches. The first finger of his left hand was blown off and the others were shattered. He sustained wounds to his left arm and hip, and numerous bullets were lodged in his legs. He survived.

The battle raged on into August and three more Linton men were killed near Pozieres on 8th and 9th August. They all died in the same compact area during a German counter-attack. Edward Noakes, 30, was a horsekeeper before the war and lived in the Grip. Frank Norton, 25, lived in the Balsham Road and had only been at the front for six weeks. Harry Goodwin lived in the Grip and was only 24. He was declared missing and his despairing parents only received official news of his fate two months later.

On 18th August Arthur Pettitt was hit by a shell which exploded the ammunition he was carrying. His shoulder was demolished and he had fifteen bullets removed from his body.



The Thiepval Memorial opened in 1932

He also survived. Before the war he had been a coach builder for his adoptive father, Frederick Suckling of 22 High Street.

The offensive dragged on and the casualties still mounted. The names of two brothers called Dyson are inscribed on the Linton War Memorial. They were the sons of the former Linton police superintendent, Edward Dyson, and were born at the police station in Symonds Lane.

They had since moved away to Ware and Paddington and had both joined the Coldstream Guards in August 1914. Herbert was 26 and died in an attack on German trenches near Pozieres on 15th September.

Picture courtesy of Garth Collard
His younger brother Arthur was 23 and was mortally wounded the very next day close to the trench where his brother had fallen.

Shortly before the battle fizzled out, one last Linton soldier was killed near Albert. On 16th October, Frederick Freestone, 22, from the Bartlow Road area was declared missing, so his poor parents had to endure eight long months of anxiety and false hopes before he was officially pronounced dead.

Many of the above are commemorated on the Thiepval Memorial opened in 1932 at the very spot named as the British army's first day objective on 1st July 1916.

Stevens solicitors

Quality Advice From Experienced Lawyers

25 High Street, Haverhill, Suffolk CB9 8AD
Tel: (01440) 762511 Fax: (01440) 703873
also at Thorn House, 11 Hill Street, Saffron Walden, Essex CB10 1EH
Tel: 01799 526849 Fax: 01899 524799

Donnelly and Morrice

ALL ASPECTS OF BUILDING WORK UNDERTAKEN

Telephone:
01223 892915
or 01223 891877
Mobiles:
07855 346826
or 07977 486941

Love your garden?

Bannold Supplies
Bannold Road, Waterbeach, Cambridge CB5 9RB
Telephone 01223 860671 Fax 01223 565431
Brochure freephone line 0500 012231
www.banfold.co.uk

the NAME for property in the AREA is: Kevin Henry estate agents
tel: 01799 513632
www.kevinhenry.co.uk
Kevin Henry in association with other independent Estate Agents offers the BEST coverage in the AREA

McKenzie & Haywards
MHG
Garage
MOT by appointment while you wait.
Servicing, Collection & Delivery Service
McKenzie & Haywards Garage
Units 3/4 Lintech Court
The Grip Industrial Estate
Linton, Cambridge, CB1 6XN
Tel: 01223 894140
Fax: 01223 890035
E-mail: murray@mckenzie-haywards.freereserve.co.uk

THE LINTON NEWS
Next Publication Date 2nd October 2006
DEADLINES for
ADVERTS Monday 11th September
NEWS ITEMS Friday 15th September
ITEMS FOR THE EDITOR
Can be put in the
Linton News Box in the Post Office
Editor: Wendy Foster, 11 Emsons Close
Telephone or text 07821 610861
email: lneditor@linton.info
Our waiting list for placing adverts is currently closed
Our advertising Manager is Judith Rouse
Telephone or text 07749 198977
email: adds@linton.info
For distribution queries please contact:
Kate France 891602



Parish Council Matters

DALEHEAD FOODS VISIT

Parish Council Matters is written, edited and published by the Parish Council with the support of the Linton News Team.

PERHAPS you have passed Dalehead Foods on the outskirts of the village, or been stuck in traffic near it, and wondered just what goes on there? Perhaps the more idealistic or squeamish amongst us would prefer not to know! Well, at the end of June, Linton Parish Council were invited to visit Dalehead Foods. After introductions, four brave councillors donned white overalls, trousers, hats and wellie boots (most fetching!) and were taken on a tour of the factory.

The pigs for the pork

production are bred on farms in Suffolk and Norfolk and transported to the Linton site. A vet is employed at the Linton site at all times to make sure that they do not go through any undue suffering. The animals are humanely slaughtered, the carcasses checked, weighed and prepared for the butchering process. This is undertaken on a production line system where cleanliness and the health and safety of the employees is paramount.

The meat is then graded and used for a variety of products from traditional

joints to sausages including the hand prepared dishes from the 'Waitrose By Invitation' range. Very little of the pig is wasted, with even some of the bones being shipped to China. The sausages are produced on a smaller production line where herbs, etc are added and mixed by hand.

Dalehead's main customer is Waitrose, for whom it supplies all the pork and sausages; its sister company in Bury St Edmunds supplies the store's requirement for lamb. Anyone who pur-

chases pork or lamb from Waitrose does so in the knowledge that they are eating locally produced meat.

We do appreciate that meat eating is not everyone's choice, but we're very impressed with the cleanliness, care and efficiency of the production facility. Dalehead is an integral part of the village, supporting local events and employing local people. We should feel proud to have a company like Dalehead within our parish boundary.

C^{hr} Esther Cornell



Dalehead Foods - a village asset

Shuttle Bus pick up points and timetable

Haverhill - Linton - Balsham - Burrough Green

Mondays to Fridays

Route number	13B	19	19	19	19	19	19
Haverhill bus station			0956	1156	1356	1556	1756
Duddery Hill Mill Hill	0710		1004	1204	1404	1604	1804
Nosterfield End	0716		1010	1210	1410	1610	1810
Castle Camps school	0720		1012	1212	1412	1615	1812
Shudy Camps	0722		1015	1215	1415	1618	1815
Bartlow	0729		1018	1218	1418	1618	1818
Linton Swan	0735	0824	1024	1224	1424	1624	1824
Balsham		0830	1030	1230	1430	1630	1830
West Wrating		0835	1035	1235	1435	1635	1835
Weston Green		0840	1040	1240	1440	1640	1840
Weston Colville		0842	1042	1242	1442	1642	1842
Brinkley		0847	1047	1247	1447	1647	1847
Burrough Green		0852	1052	1252	1452	1652	1852

Burrough Green- Balsham - Linton - Haverhill

Mondays to Fridays

Route number	13B	19	19	19	19	19	19
Burrough Green	0726	0852	1052	1252	1452	1652	
Brinkley	0731	0857	1057	1257	1457	1657	
Weston Colville	0736	0902	1102	1302	1502	1702	
Weston Green	0738	0904	1104	1304	1504	1704	
West Wrating	0745	0909	1109	1309	1509	1709	
Balsham	0750	0914	1114	1314	1414	1714	
Linton Swan		0920	1120	1320	1520	1720	1820
Bartlow		0926	1126	1326		1726	1826
Shudy Camps		0929	1129	1329		1729	1828
Castle Camps school		0932	1132	1332		1732	1832
Nosterfield End		0936	1136	1336		1736	1836
Duddery Hill Mill Hill		0940	1140	1340		1740	1840

Can YOU help with our trees?

The trees in both the recreation ground and the cemetery need some major surgery; however the Parish Council is struggling to obtain advice and quotations from suitable tree surgeons. To undertake work for the Parish Council, any tree surgeon would need to have public liability insurance. We therefore are making a plea for any resident who knows a suitable tree surgeon that would be interested in undertaking the work.

More Growing Concerns



Two more pictures from our complaints log of hedges and plants growing over the foot-path

Pictures by Wiggles

Maintenance-free PVCu fascias and soffits
Giving you more time for life's little pleasures

NOW WITH A 20 YEAR GUARANTEE!

Freefoam
Fascias, soffits, guttering and cladding
Fully qualified professional installers

Call us now for a FREE survey and quotation 01353 723799
www.whitehallplastics.co.uk

GEOFF NORBY
Reg No. 34107

PLUMBING & HEATING ENGINEER - Estd. 1966
All aspects of Central Heating and Plumbing
Boiler Service & Maintenance
Bathroom Suites & Power Showers
Kitchen Installations - Tap Washers

Telephone 01223 892311
Mobile 07885 068047

Small Gifts

Watch Batteries and Straps fitted while you wait.
Jewellery Repairs including sizing and polishing.

All repair work carried out on the premises by a professional with 40 years experience

We stock a selection of
Silver Jewellery • Photo Frames •
Collectables • Toiletries • Greetings
Cards • Gift Wrap

61 HIGH STREET, LINTON, CAMBRIDGE CB1 6HS
TEL: (01223)894225

Traditional Acupuncture
An Ancient and Trusted Way Of Healing

Some complaints treated by acupuncture:

- * Stress/Anxiety
- * Pain (relief of)
- * Insomnia
- * Low energy
- * Back pain/Sciatica
- * Asthma/Allergies
- * Depression
- * Arthritis/Rheumatism
- * Digestive
- * Headaches
- * Stiffness/Tension
- * Menstrual
- * Colds/Low immune
- * PMT
- * Menopause

Therapeutic Massage
Beat Stress, Recover More Quickly from Injury, Feel Energised!

Practitioner
Peter White MSC, MBAcC, Dip Massage, Dip TCM China, Insured
For a free initial consultation and bookings call: 0845 430 9120

Tereza Votre Jewellery
Linton

A collection of handmade jewellery & beadwork with precious and semi-precious stones is available for viewing by appointment

Tel: 07979 594488
Email: terezavb@terezavotre.co.uk
www.terezavotre.co.uk

ASW INSTALLATIONS

TELEPHONE ENGINEERS

CALL **Andrew on 07990 898389**

Chapel
Independent Financial Advisers

SPECIALIST ADVICE ON
Pensions - Investments - Mortgages - Protection
Personal Financial Planning

FREE Initial Consultation & Without Obligation

Ian Cross
01223 892821
email: Chapelifa@btinternet.com

De-Salis House, 6 Hillway Linton, Cambs, CB1 6JE

A Member Of Sesame limited Which is Regulated By The Financial Services Authority
YOUR HOME IS AT RISK IF YOU DO NOT KEEP UP THE PAYMENTS ON A MORTGAGE, OR ANY OTHER LOAN
SECURED UPON IT. WRITTEN DETAILS ON REQUEST

Councilminutescouncilminutescouncilminutescouncilminutescouncilmin

MINUTES of the meeting of Linton Parish Council held on 20th July 2006, held at the Cathodeon Centre.

Apologies were received from C^{llrs} Cox and Willingham

The minutes of the Meeting held on 6th July 2006 were amended under Item 48 to read 'some of

behaviour. There has been a major act of vandalism in the Drop-in Centre resulting in damage to the office area. Discussion took place regarding a Section 13 order to ban alcohol in specific areas. DC Batchelor reported that the police already have the power to take away alco-



The safety surface at the Cathodeon Centre

Picture by Wiggles

jection to the objection sites.

Written reports from Council representatives:

A representative from Wicksteed Play Equipment will visit the Cathodeon site next week to look at the safety surface and the new play area. Concerns have been raised regarding the surface of the new play area. It was agreed that any required remedial work would be carried out as a matter of urgency

The playgroup has erected a

a bill for the repair of the mower amounting to almost £700. This cost will be challenged. The Parochial Church Council will write to the Parish Council asking them to take responsibility for the machinery. This matter will be discussed once the official request has been received.

C^{llr} Gee distributed a report from the Parish Matters Working Party to be discussed at the next meeting on 3rd August.

The Minutes of Planning Committee meeting held on 6th July 2006. The minutes were considered and no changes made.

Correspondence was noted. Of particular interest:

Item 10 - Herald will be contacted regarding mole hills.

Item 14 - Royal Mail letter regarding change of post codes. Concern was expressed regarding the timing of the information to be sent to all affected addresses. C^{llr} Urwin proposed and it was agreed to write a letter of complaint regarding the lack of information sent to homes and businesses.

Item 19 - SCDC Village Facilities Information leaflet - It was agreed to contact SCDC highlighting the errors.

Item 21 - It was agreed to contact the owner of the car left in Market Square car park and ask for it to be removed

Matters arising from the Minutes of meeting of 6th July not already listed.

The Clerk reported that unfortunately repairs to the skate ramp will not be covered by insurance. Our policy will be checked for other omissions.

It was also reported that Herald Contractors have agreed to submit a work log.

There were no reports from councillors at present.

The meeting closed at 21.45



Stantons Lane Bridge

the planks have buckled and will probably not need to be replaced.' The minutes were then agreed and signed.

Report from the Police - Increased high visibility patrols have been organised to tackle the problems in the Parsonage Way area. Any information, including the details of vehicles should be reported on 0845 456 4564. A Police Surgery will be held at the Library on Friday 18th August at 3pm and monthly thereafter. Everyone is welcome.

Report from the County Councillor - CC Batchelor reported that a new shuttle bus service will operate a daily circular service from Burrough Green to Haverhill via Linton and surrounding villages. This will be operated by Stagecoach and subsidised by the County Council (CC). Unfortunately no consultation has taken place between CC, Parish Councils and the public. As a result Balsham has lost two early morning buses into Cambridge. A public meeting is planned for the end of September.

Report from District Councillors. DC Batchelor reported that outreach work has commenced this week to tackle anti-social

hol but are reluctant to use it. Further discussion took place regarding the reinstatement of the Section 30 order. DC Batchelor reported that although the previous Section 30 had been successful it had only moved the problem elsewhere. Linton was the only village in South Cambs to obtain a Section 30 and it was unlikely that another would be issued. C^{llr} Bald



The new shuttle bus service now operating between villages

Picture by Wiggles

proposed, it was seconded by C^{llr} Gore and agreed unanimously to apply for the Section 30 to be reinstated.

SCDC - Local Development Framework - Objection Sites. Discussion took place and it was proposed by C^{llr} Gee, seconded by C^{llr} Clay and agreed to support SCDC in their ob-

covered area to the side of the building which does not allow for the top windows to be opened. They have also drilled into the brickwork. Unfortunately no detailed plans were submitted to the trustees prior to the work being carried out.

C^{llr} Gore reported that the churchyard maintenance group have received

Linton House Designer
Stephen Mattick

- Residential + Commercial
- New Designs, Renovations
- Extensions, Conversions

Quality Planning Applications & planning process management

Free initial consultation and fixed fee quotations

www.mattick.co.uk T: 01223 891159
E: mattick@mattick.co.uk F: 01223 894182

Realise your child's potential

Maths and English After-School Programmes

- Build solid foundations in maths & English
- Give their confidence a real boost
- Complement the school curriculum

LINTON STUDY CENTRE
01223 893578

01223 893 578
kumon.co.uk

KUMON
Every child can shine

The Newmarket bus Timetable



The changed service No46 to Newmarket

Picture by Wiggles

Streetly End - Newmarket Service 46
MONDAY TO SATURDAY

	SA	MWTHF	TU *
Streetly End	08:08	08:30	08:30
Horseheath, Green	08:11	08:34	08:34
Linton, Police Houses	08:16	08:41	08:41
Linton, High Street	08:18	08:45	08:45
Balsham, Bell	08:27	08:54	08:54
Newmarket, Wyck Hall Stud	09:20	09:37	09:30
Newmarket, High Street	09:23	09:40	09:33
Newmarket, Rookery Bus Station	09:25	09:42	09:35

Newmarket - Streetly End Service 46

	SA	TU	MWTF*
Newmarket, Rookery Bus Station	12:00	12:20	12:20
Newmarket, High Street	12:02	12:22	12:22
Newmarket, Wyck Hall Stud	12:05	12:25	12:25
Balsham, Bell	12:53	13:03	13:10
Linton, High Street	13:00	13:12	13:19
Linton, Police Houses	13:02	13:16	13:23
Horseheath, Green	13:05	13:23	13:30
Streetly End	13:10	13:27	13:34

NOTES

- * MWTF Operates Monday, Wednesday, Thursday and Friday only
- * TU Operates Tuesday only
- * SA Operates Saturday only

Pickup points between Balsham and Newmarket have been removed.

LINTON PARISH COUNCIL
Linton Village Hall, Coles Lane, Linton, Cambridge, CB1 6JS. Tel: C. 891001
www.lintonpc.org.uk
Clerk to the Council - M^{rs} Sue Parry
Email: lintonpc@btconnect.com
Office hours : Monday 9am-12noon, & 4-6pm, Tuesday-Friday 9am-12noon
Or by appointment
Parish Council dates for Full Council meetings:
September 7th and 21st, October 5th and 19th
All meetings held at the Cathodeon Centre and commence at 8pm

ProClean
For a Local Professional & Friendly Service

- Carpet Cleaning
- Mobile Valeting
- Upholstery Cleaning
- Contract Office Cleaning
- Cleaning of Patios & Paths

TEL: 890433

Benten & Co.
Chartered Certified Accountants

We are a friendly, well established firm, large enough to deal with most accountancy and taxation matters.

Please telephone for an initial consultation (without obligation)

Abbey House, 51 High Street, Saffron Walden
Telephone 01799 523053
www.benten.co.uk

Bodywork

Hair & Beauty Salon
113 High Street, Linton Cambs. CB1 6JT

Monday only 20% off all hair and beauty treatments for OAP's

Hair, Beauty, Nails and New fast tan sun bed

Open 6 days a week Mon/Tues/Friday 9am - 6pm
Wed/Thurs 9am - 8pm Sat 8.30 - 4pm
No Appointment necessary
Call 01223 891161 for more information

LINTON VILLAGE MOTORS

01223 830550

BOURNE BRIDGE ABINGTON CAMBRIDGE (near COMFORT CAFE)

- Authorised MOT centre
- ALL MAKES serviced and repaired
- Competitive prices on tyres & exhausts
- Collection and delivery arranged
- FREE advice
- Polite friendly staff
- FREE use of courtesy car

A FULLY INSURED MOT APPROVED GARAGE
CAN YOUR MECHANIC SAY THAT?