

Remembrance
Service
2.30pm
on Sunday
9th November
St Mary's Church

Established 1987

Over 2,350 copies
distributed
free in Linton,
Hildersham,
Hadstock &
Bartlow

THE LINTON NEWS

www.linton.info e-mail lneditor@linton.info

November
2014

Vol. 28 N° 8

Publication date
Monday 3rd November

E & E PLUMRIDGE
Design & Print
41 High Street
Linton
01223 891407

JR, a true Linton fixture

ANYONE walking through the recreation ground during the summer months is likely to see the clearly recognisable figure of JR tending the village cricket square. Even villagers who have no interest in cricket or football owe him a debt of gratitude for the care he extends to our beautiful recreation ground.

Born and brought up in Radwinter, John Richardson has lived in Linton with his wife Jenny and their three children Peter, David and Gayle for many years.

A sportsman through and through, JR was already playing for Horseheath cricket club and caring for their wicket when he single-handedly resurrected Linton village cricket club in 1991.

He cut the wicket out of nothing, starting with a square about half its present size. He then entered a team into the bottom division of the league, taking on the roles of captain, secretary and groundsman, as well as arranging all the fixtures, fundraising and submitting regular reports to the Haverhill Echo.

Under his stewardship,



Labour of love: JR preparing for work on the cricket pitch

Picture supplied by Esther Cox

the team improved year on year.

JR played regularly on Saturdays until he was well into his 60s, even continuing to play in friendlies and on President's Day after his official retirement. He was famous for his deceptive bowling, known as hand grenades.

Nowadays, in between enjoying his passion for bowls and watching Norwich FC, JR's role in the club is

confined to maintaining the wicket, although that is an undertaking in itself.

During the summer months he will be at the ground every day for countless hours, cutting and rolling the pitch, preparing up to four wickets a week for the junior teams as well as senior matches midweek and at weekends. He has done this religiously, even sacrificing family holidays in favour of the cricket ground, until about 10 years ago.

It is no exaggeration to say that without him LVCC would not be the club it is today.

All those involved with both the cricket and football clubs look to him as an example of commitment and true sportsmanship. This was acknowledged at the recent LVCC Presentation Evening when he was awarded the Clubman of the Year Shield.

Esther Cox on behalf of LVCC

A third book for local author

THREE unrelated interests that became entwined gave Hilary Custance Green the idea for her third book. A poem written by her daughter about looking at people's hands as an exercise for actors to reduce inhibitions was the first, followed by an adventure in a Slovenian taxi when the driver lost the way with four people who had no common language, and curiosity about how we care for basically good people who have committed a crime for one-off reasons.



Having a well earned break

Picture supplied by Hilary Green

Border Line is set in largely unspoilt country where 10 English people, who have decided death is the only way out, embark on a last journey before taking the final plunge. For 21 days they are led by Daniel, the carer, who encourages them to share their stories and secrets before making the final decision.

Border Line is a passionate love story told against the backdrop of the beautiful Slovenian landscape. It tackles contentious issues around suicide and assisted dying and is a good read.

In the 1980s Hilary's work as a sculptor was curtailed by a serious back problem. Following career advice, she studied psychology and worked in brain research for the next 15 years. To balance her academic life she also started writing fiction and in 2003 her first novel, *A Small Rain*, was published. This story explores love and grief and the surprising connections between people we meet. In 2008 she published her second novel, *Unseen Unsung*, a story about catastrophe and courage, music and love. She is now working on a non-fiction story about Far East prisoners of War in World War II.

Hilary has lived in Linton with husband Edwin for almost 40 years. They have two grown-up daughters educated at the local schools.

Border Line is being published by Threadgold Press on 5th December on Amazon, iBooks, Barnes and Noble. Promotion price copies will be available from 8th November, direct from Threadgold Press at 36 Symonds Lane, Linton.

Kate France

Important changes to bin collections

over the winter months



Green bin collections

GREEN bin collections will be changing to a monthly collection during the winter months when far less garden waste is put out by residents. The change is being made for December, January and February collections only, with fortnightly collections remaining in place for the rest of the year.

Christmas collections

We're asking residents to make an early note of Christmas bin collections as changes this year will affect all residents, with some collections moving forward as well as back. Collections will be made until 27th December, break until 4th January and return to normal on 5th January.

- Please ensure bins are put out by 6am on the day of collection
- You can recycle all your Christmas cards and wrapping paper in the blue bin
- You can compost all leftover food (cooked and raw) and real Christmas trees (cut up) in the green bin
- Excess blue bin material will routinely be collected when placed alongside the blue bin in a returnable container or cardboard box
- Excess black bin waste will be collected if placed alongside the bin on the first scheduled black bin collection after the New Year only.

Want to know more?

For more information and to see the collection calendar:

- Visit www.scams.gov.uk/bin-changes
- See the latest edition of the South Cambs Magazine. 03450 450 063

Here at the Linton News we will do our best to ensure that the dates for bin collections at the bottom of the diary are correct each month, so if in doubt please check them.

Editor

Neighbourhood Plan villagers can have their say

THE first formal consultation on the Neighbourhood Plan (NP) for Hildersham and Linton is currently being planned for early December. This will be the first such consultation in South Cambs and is the first step in ensuring that villagers have a statutory voice in the planning decisions that will affect both this and the next generation.

Just to re-cap, the NP is mainly about how land can best be used to meet the needs and aspirations of villagers for the next 20 years.

The purpose of the consultation is to obtain the views of residents on what should be the key themes to be included in the NP and their vision for the future of Linton and Hildersham – what do residents want to see in the future and what don't they want?

Once agreed, these key themes will be translated into the planning policies, which will ensure that the community's wishes are respected and not ignored – as so often happens at the moment. The key themes to have emerged so far are:

- The location and type of housing development that villagers wish to see, especially for a growing elderly population and local people needing houses
- The location and amount of recreational land (of all types) and green space needed in the villages
- The need to ensure a safe environment for all road users and pedestrians, especially school children, in and around the villages
- Conservation of both the landscape and the architectural heritage of both villages and to ensure that the design of new houses is in character with the villages
- To take active steps to protect the natural environment, to promote bio-diversity and manage the landscape to alleviate flooding

More details of the consultation process will be publicized in the coming weeks.

To find out more about the NP and how you can get involved e-mail lintonpc@btconnect.com.

Paul Poulter

Flu jabs – have you had yours yet?

FLU vaccination is recommended for everyone aged 65 and over and for clinical at risk groups such as those with diabetes, heart disease, chronic respiratory disease, chronic liver disease, chronic kidney disease, coeliac disease and people who are immunosuppressed. Pregnant women are also advised to have both a flu jab and vaccination against pertussis (whooping cough).

Shingles vaccination is also available to those born between 2nd September 1943 and 1st September 1944 and 2nd September 1934 and 1st September 1936. This is a one-off vaccine that can be given at the same time as the flu jab.

This year, children born between 2nd September 2009 and 1st September 2012 are eligible to receive a flu vaccination. The vaccine is administered by a nasal spray rather than an injection for this group of patients.

We had over 2,500 patients to vaccinate and we would like to thank all our staff for giving up their Saturday mornings in October to run our four Saturday flu clinics. It has certainly enabled us to vaccinate the majority of our eligible patients without impacting too much on our normal weekday appointments. If you are eligible and haven't had your flu jab yet, do please give us a call to make an appointment.

Dr Wheeler & Partners
Linton Health Centre

Too good for jumble...

NEW this month are a computer workstation with beech coloured top, and two shelves on a metal, mobile frame, 79cm high, 80 cm wide and 60 cm deep and a British Herodia sewing machine (1950s model).

Further items are the over-bed table with wooden style melamine top, 2ft long x 1ft 4in wide, adjustable to 2ft 7in high (metal frame with castors), a round barbecue on a green steel trolley, 99 almost new Dunlop-ping-pong balls, the child's snooker table on a frame, 12 stacking metal chairs with black padded back and seats and the Hewlett Packard Deskjet 930C printer with set-up disk.

The shed raised £25 for Linton Heights PTFA for books for the library and a water boiler raised £15 for Linton Guides to donate to the Poppy Appeal.

To buy any of the above or to offer an item to profit a charity, please contact Kate France on 891602 or email kfrance@profoundconsult.com

NB: The donor chooses the charity to receive the money.



Adult support drop-in events

THESE events are for anyone living with someone with a long-term illness or disability, providing unpaid support to adult family members or friends who could not manage without this help or struggling with an age-related condition. The sessions are continuing this autumn/winter and the next drop-in at Sawston Free Church is from 10.30am-1pm on 18th November.

British Legion Poppy Calls Operations Manager Russell Rolph will talk about the Poppy Call Handy Van Scheme and how it may help you.

Drop in for a cup of tea and a chat about the information, advice and support that may be available, to share your stories and experiences, talk in confidence to a member of the Carers Support Team or Physical Disability Services Team or to book a carers' assessment.

For more information please telephone Gemma Whitehouse on 01480 377616 or Leigh Hornsby on 01480 373220.

Email: CarersSupportTeam@cambridgeshire.gov.uk
Visit: www.cambridgeshire.net and search *Adult Support Drop-in*

Festive fun craft mornings



Christmassy things to be made

Picture by Lesley Williams

BUILDING on the success of the knitting, sewing and quilting lessons on offer at Designer Drapes, Hadstock, well known local business woman, Lesley Williams, is delighted to introduce Christmas workshops.

On Tuesday 11th November the project is Christmas gift box making and on Friday 14th November it is Christmas tree decorations and bauble making. Both workshops run from 10am -12noon.

Further workshops are planned for the mornings of 28th November, on Christmas

place settings, and on 12th December on Christmas bunting. All materials are supplied along with refreshments and home-made cakes.

To enquire about bookings and prices please call Designer Drapes on 890556 or email your interest at designerdrapes2@gmail.com

In the new year Lesley will offer sewing, quilting and craft lessons as well as her usual bespoke curtain and upholstery services. She will also start stocking wool and knitting patterns.

Judith Rouse



Songs and drama at harvest time

ON Wednesday 8th October, pupils from Linton Heights junior school went to St Mary's Church to celebrate the Harvest Festival for the first time in many years.

Harvest is a very special time of year in the lives of Christians, as it allows them to give thanks to God for all the great gifts they receive throughout the year. It also gives us a chance to think about those who are less fortunate and about ways to help them. All the food collected in school will be donated to the Haverhill food bank.

The children sang harvest songs, which we have been practising in school every Wednesday morning since the start of term. In addition to this, each year group performed a

small scene which focused on one aspect of Harvest.

Year 3 performed some drama about a turnip that just wouldn't budge, while children from Year 4 did a *Vegetable Rap*. Year 5 sang *Food Glorious Food* from the movie *Oliver* to show how lucky we are to have food on our plates and finally Year 6 showed us how different countries celebrate harvest. At the end of the service, it was lovely to hear the adult choir performing too.

All in all, it was a fantastic service that we really enjoyed being part of, and we can't wait to go back to the church to begin the countdown to Christmas in December.

Levi Polley, Isabelle Fisher and Anna Ward, Year 5

Applications invited for the Anderson Trust

THE trustees of the Charles and Mary Anderson Benefaction would be pleased to receive applications for grants from the benefaction for distribution in 2015. The aims of the charity are as follows:

- To sustain the work and worship of St Mary's Church, Linton
- To promote education for the benefit of those living in or resorting to Linton, in particular within the Church School
- Any other charitable purpose for those living in or resorting to Linton

In 2014 seven grants were made, ranging in value from £200 to £5,000 and covering varied activities, supporting all ages across the community.

Applicants need to complete the 2015 application form, which contains further details of the application process. The form is available from Gill Powell, chair of the trustees, on 893663 or by email at the address below.

Applications should be sent to 7 Harefield Rise, Linton, CB21 4LS by the deadline of Friday 6th February 2015. Email applications may be made to powellz@talktalk.net.

The trustees will meet in early March to consider all applications.

Gill Powell 893663

Singing Lessons

Sarah Rosewell
BA (Hons) Music

Individual singing lessons available for all ages and abilities

Whether towards exams or purely for pleasure

- * CRB Checked
- * Based in Linton

For more information contact:

Sarah on 01223 894861

Email: sarahrosewell@hotmail.com

Jeanine's Beauty Room

Gelish Nails & Traditional Manicures & Pedicures
SiennaX Spray Tanning
Silk Eyelash Extensions

Based in Linton
Mobile work if required

Professionally Qualified & Fully Insured.
Quality Products Guaranteed

Tel: 07974 921069
Email: jeaninebeautyroom@outlook.com
Website: www.jsbeautyroom.vpweb.co.uk

Designer Drapes Tel: 01223890556

Linton rd Hadstock

For all your Curtains & Blinds give us a call.

Curtain alterations.	PATCHWORK LESSONS
Free measuring	Mondays and Tuesdays
Fitting service	Book your place now
Haberdashery	spaces limited
Quilting fabrics	Sewing machine repair and service
Upholstery service	Remnants and Rollends

Fabric sold by the metre

designerdrapescurtains.co.uk. designerdrapes2@gmail.com

NRS CARPETS

HOME SELECTION
FREE MEASURING & ESTIMATING

All types of flooring available

Tel: 01223 893634
Mobile: 07885 173113

TRIPLE J FITNESS

AMAZING GYM DEALS

Best ever! check out these great offers...

GYM BUDDY £45 FOR A DOUBLE MEMBERSHIP

£20 per month NEW! STUDENT MEMBERSHIP

STANDARD MEMBERSHIP FROM JUST £22.92 per month! YEARLY, MONTHLY AND PAY AS YOU GO OPTIONS AVAILABLE

01223 89 11 64 joe@triplejfitness.co.uk

www.triplejfitness.co.uk

LINTON VILLAGE MOTORS
(situated in Great Abington opposite Granta Park)
www.lintonvillagemotors.co.uk

Tel: 01223 830550

- MOT testing
- All makes of vehicles serviced and repaired
- Tyres at competitive prices
- courtesy car provided
- Polite and friendly staff

Mon-Fri: 8.30am-5.30pm Sat: 8.30am-12.30pm

Small Gifts

Watch batteries and straps fitted while you wait.
Jewellery repairs including sizing and polishing.

All repair work carried out on the premises by a professional with 40 years experience.

We stock a selection of:
Silver Jewellery • Photo Frames • Collectables • Toiletries • Greeting Cards • Gift Wrap

61 HIGH STREET, LINTON, CAMBRIDGE, CB21 4HS
TEL: 01223 894225



Children are happy at the infant school

NOVEMBER is here, along with the darker mornings and evenings and the term is well under way. In fact, pretty soon we will be busy preparing for the Christmas show. We have already been busy designing Christmas cards.

Our Harvest Festival service showed how generous and thoughtful the children (and parents) are. We requested non-perishable foods for Haverhill food bank and we weren't disappointed. Thank you again to all of those who donated.

Back in July, we sent home a parent survey; the results show that 100% of children enjoy coming to school and 100% of parents believe that the school places a positive emphasis on moral values and children's emotional well-being.

Of course, there is always room for improvement and according to the survey, the area which needs the most attention is the outdoor learning environment. This is one of the key priorities for the school over the next three years with the governors and our PTFA working hard to raise the funding for this. If you know of any funding streams which may be able to assist us, please do not hesitate to contact the school office.

As mentioned last month, the admissions window will soon open for children due to start school in September 2015. If you are thinking Linton Infants is the school for your child, we are holding open mornings for you to come and see for yourself. The sessions will run from 9.30am on Tuesday 4th November, Monday 17th November, Thursday 4th December and Monday 8th December. Places on each session are limited so please phone the school office on 891421 to book a place.

Louise Clark, Headteacher

Linton Infant's lucky numbers

LINTON Infant school Parent Teacher Friend Association (PTFA) is embarking on this year's fundraising campaign by opening up the annual lottery *Lucky Numbers* to the village community as a whole. The cost will be £12 per allocated number, which goes into five monthly draws (with two cash prizes) and then a final jackpot draw (with four cash prizes).

The PTFA raises funds every year for the children at Linton Infant school to help subsidise school trips, equipment and

parties and is helping to provide an outdoor education area. By joining the *Lucky Numbers Club* you can help the school as well as having a chance to win cash prizes.

If you are interested please collect an application form and a copy of the club rules from the school office or by emailing rayandhelen@gmail.com The deadline to join is 24th November with the draws taking place on the last Friday of the month.

Ray Boffey



Join the Hundred Parishes Society

THE Hundred Parishes Society was recently launched as an initiative to raise awareness of a large area of north-west Essex, north-east Hertfordshire and southern Cambridgeshire that is particularly notable for its exceptional depth of heritage (see October parish council pages).

They have launched a new website www.hundredparishes.org.uk to explain the idea more fully. It includes an introduction to each parish, a series of walks from railway stations and a short introduction to a number of notable people associated with the area. The website shows regular events and local attractions and there is a What's On page that lists opportunities to learn more and to get to places that you may not know.

The Society is a registered charity and the website includes details of how to become a member for a nominal subscription of £10 a year per family or organisation. Whether or not you become a member, we hope you will make regular use of our website and that it will inspire you to increase your knowledge and enjoyment of the Hundred Parishes.

Ken McDonald, Secretary

G. DYE & SONS
GENERAL BUILDERS,
GROUNDWORK & MAINTENANCE,
CONSERVATORIES & UPVC WINDOWS, KITCHEN & BATHROOM REFFITS

ALSO INTERIOR & EXTERIOR DECORATING
REFERENCES AVAILABLE

3 Back Road
Linton
Cambridge
CB21 4LG
Tel: 01223 892089
Mobile: 07961 342887
georgedye738@btinternet.com

Free Estimates

Acupuncture and Massage in Linton

Some of the conditions acupuncture can help ...

- sports injury and tension
- back, knee, hip, shoulder and elbow pain, rheumatism
- fertility optimisation, IVF, pregnancy and menstrual
- headache and migraine, stress
- high blood pressure and circulation conditions
- anxiety and addictions

Peter White MBACC, MSc, MBACC.
Call: 01223 891145 for an appointment or free assessment
Email: enquiries@lintonhealth.co.uk

Readers write...

Post and email addresses and deadline for articles are on this page. All letters for publication must have a full name, address or phone number to enable us to check authenticity. Letters may be edited. Opinions are not necessarily those of the Linton News.

Anonymous letters will NOT be published but names and addresses may be withheld if requested.

Has anyone seen our boards?

Dear Editor

Three of our large flower festival advertising boards have disappeared. One was placed on the railings at the top of the High Street, one on the Swan bridge railings. The latter was found rather damaged, but was carefully put back together and replaced at the same place but has since gone missing again. We had another one on the railings at the cemetery. Altogether, we have lost four, as the one placed near to the Lonsdale estate last year also disappeared.

As you can imagine, this is a great loss to the festival in terms of money and advertising for our event.

If anyone has any information as to the whereabouts of the boards, or has seen someone acting suspiciously near where the boards were placed, please can they contact me on 891111 or email nanette1@hotmail.co.uk.
Nanette Blackmore

LOST between Symonds Lane and the recreation ground on Friday 16th October a pair of prescription sun glasses, purple frame with gold flecks. If found please call Mrs Orbell on 891557.

OUR THANKS

Dear Editor,

We are immensely grateful to everyone who helped to find, feed, entertain and rescue our missing cat Fig. The list of helpers includes our neighbours Michael and Pam Holden, our children, David Urwin and his colleagues, friends, schoolchildren, a contributor to the Linton Forum who posted a photograph and an unknown number of fellow Lintonians.

Fig came to live with us in early September after a dog joined his household. He got lost two weeks later on his first excursion outside, shortly before we had to go away. He was eventually found near the guide hut. Thanks to our caring community. He is now happily settled at home as an indoor cat for the present.
Michael and Diana Lindsay
High Street

Target smashed by Fliiss

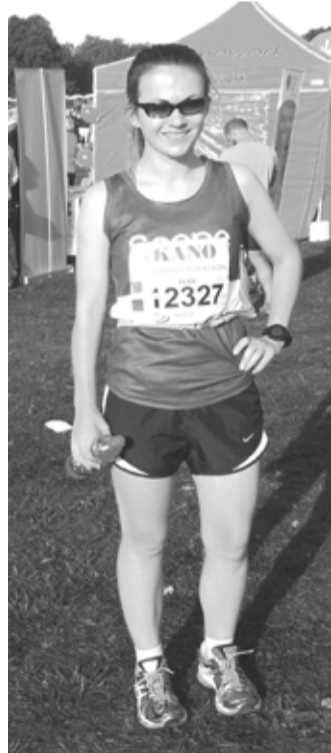
AS some readers may know, over the past few months I have been preparing to run my first marathon and fund-raising in aid of the charity Scope.

Scope exists to make this country a place where disabled people have the same opportunities as everyone else.

I am now very proud to say that not only did I complete the Robin Hood marathon in four hours and five minutes, I sailed past my fund-raising target.

This would not have been possible without the tremendous generosity of everyone who sponsored me and I would like to thank you all for this support.

Fliiss Tournant



Well done Fliiss

Photo supplied by André Tournant



Interior/Exterior Decorating

Fencing, Guttering
Turfing, Garden Clearance
Lawn & Hedge Cutting
Decking & Patio Cleaning
Patios & Driveways

Call on
(01223) 892889
or **07973294946**
No job too small...

GCSE Maths and Science Tuition

Experienced tutor with thorough knowledge of the curriculum
CRB checked and based in Linton
Reasonable rates and free initial consultation

Phone Sally - 01223 893716



McKenzie & Haywards Garage LTD

MOT by appointment while you wait
Servicing, Collection & Delivery Service

Unit 3 & 4, Lintech Court
The Grip Industrial Estate
Linton, Cambs
CB21 4XN

Tel : 01223 894140
Fax : 01223 890035
mhgarage@btconnect.com

King's Lynn, so good it made them late

ACEs were on their travels again – this time a coach trip to King's Lynn on 25th September.

King's Lynn has an historic centre with two of everything – market places, guildhalls, a minster and a fine church, etc – reflecting that it was built in two phases. The New Town was new in the 14th century. Its wealth, as a member of the Hanseatic league of trading ports and once England's major port, is reflected in its many fine buildings. The major warehouses are now museums, art centres and restaurants, reflecting its changing status.

The trip there, in the sunshine, showed our countryside at its best. Then we went our own ways – some explored the shops, others the waterfront and restaurants. A few took the town walk, with a guide who knew everyone in the town. So, we saw enclosed gardens, inside the theatre and many other hidden delights. The party was late for the bus home but the tour was too good to hurry – highly recommended for your next visit.

Our coach driver showed exceedingly skilful driving, negotiating a diversion into the narrow streets of KL, then our high street at rush hour to a well-deserved round of applause.

We are starting the festive season rather early, with a lunch and entertainment at 12.30pm on Tuesday 25th November in the Sports Pavilion. Pass the word.
PS Please park on the LVC site.

Enid Bald 891069

Make your vehicle safe

THERE have been a number of burglaries and thefts where high-powered vehicles such as BMW, Audi or 4x4 models have been targeted. It is not a new trend for these types of vehicle to be stolen to commit crimes and there are simple steps you can take to reduce the risk and improve security.

BMW drivers in particular should note there is a flaw in the security system of some BMW models (2005-2011 registered cars) which means that criminals can potentially access the on-board diagnostics (OBD) port and add a blank key to the on-board system. This is then used to disarm the alarm system, allowing them to start and drive the car away without a key. BMW can apply a fix to avoid this happening, so it is worth contacting your local dealer for advice.

For security at home, always remove car keys from obvious places such as ground floor window ledges and shelves. Don't leave keys on a table or anywhere they will be vulnerable to fishing or hooking using a device through the letter box, for example. Ideally take any vehicle keys upstairs with you when you go to bed.

If you have a high value vehicle and you park on your drive, consider security gates, lockable bollards and a driveway alarm. Even better if you can park your vehicle in a garage.

Take basic security measures to guard against sneak thieves. Make sure all ground floor windows and doors are secure and locked. Set alarms if you have them.

Rachel Carr, Crime Reduction Officer

MOBILE CHIROPRACTIC SERVICE

GCC-Registered Chiropractor

ALEXANDER M SMITH

01223 967565

SOUTH CAMBS AREA

(Based in Linton)

Effective care in the comfort of your home
- Low back pain & sciatica
- Neck pain & headaches
- Muscle spasm/tension
- Shoulder & Knee pain
- Postural problems
www.alexandersmithchiropractor.co.uk

Neil Claxton

Painting & Decorating

Interior/Exterior

Rooms Emulsioned

from £120

FREE ESTIMATES

Tel: 01223 893487

Mobile: 07724073045

e-mail:

n.claxton925@btinternet.com

MALLYON & DONALDSON Linton

Specialising in both Modern and Traditional building methods.

Tel: 01223 891267

Mob: 07941 220868

All contracts finished to a high standard. Reliable service. Local references available.

TIM PHILLIPS & Co. Accountants

Established 1991

Independent, specialist service for:

**Small Business • Self Assessment
Personal Taxation**

Free initial consultation – no obligation
EASY, FREE PARKING

Copley Hill Business Park, Cambridge Rd., Babraham
Off A1307 between Wandlebury and Babraham

Tel: 01223 830044. www.tpaccounts.co.uk

THE LINTON NEWS Next Publication 1st December 2014

DEADLINES for ADVERTS Monday 10th November

NEWS ITEMS Wednesday 12th November

ITEMS FOR ADVERTISING MANAGER

Limited space on waiting list for Linton businesses

Changes to ads can be sent to: Judith Rouse

email: adds@linton.info

ITEMS FOR THE EDITOR

Can be put in the Linton News Box in the Post Office

Editor: Fran Armes email: lneditor@linton.info

Phone 891517

For distribution queries contact: Kate France 891602

LINTON DIARY

For entry in this list, ensure that your event is written into the diary in the Post Office, failure to do so could mean non-entry to the diary here. You may also send an email with your event details to diary@linton.info, or use the form on www.linton.info. Call 971797 for an audio version of the Linton News

Details of items in bold type may be found in this edition.

WEEKLY

Seedlings Alternate Mondays 1.15-2.45pm	CC
Whist drive, 7.30pm Mondays	VH
Chestnut baby/toddler group, 9.30-11.30am Mondays term time	Pavilion
Linton Granta football bingo, 7pm Mondays	Pavilion
Linton theatre workshop, Mondays (call Joe 01440 703701)	
Play & Stay, Alternate Tuesdays, 9.30-11am	CC
WEA, Tuesdays, 10am term-time	VH
Scrabble club, 10am-12noon alternate Tuesdays	CP
Linton Granta playgrp, 9am-12noon Monday-Friday	LVC
Linton Granta Toddler grp, 9.30-11.30 Tuesdays term time	LVC
Linton Granta playgrp, 12.30-2.30pm Mon-Fri, NOT Tues	LVC
Storytime, 2-2.30pm Tuesdays, term-time	Library
Granta bridge club, 2pm Tuesdays	VH
Table tennis club, 8pm Thursdays term time only	URC
Linton chess club, 7.30pm Tuesdays (893509)	CC
Granta duplicate bridge club, 2-4pm Tuesdays	VH
IT club, 7pm Tuesdays	CC
Tots in tow, 10-11.30am Wednesdays term time only	VH
Linton radio race car club, 6-10pm Wednesdays	VH
Jelly Beans playgroup, 9-11.30am Thursdays	URC
Computer buddies, 2-4pm, Thursdays	Library
Crickets club, 6-8pm Thursdays	RG, LVC
Carpet bowls, 7.30pm Thursdays	VH
Bumps to babies, 1.15-2.45pm Thursdays	CC
Table tennis club, 8-10pm Thursdays term time only	URC hall
Parents, carers and tots Mocha house, 9.15-10am Fridays	CP
St Mary's church choir, 7-8.30pm Fridays	St Mary's
Bridge club, 7pm Fridays	CC

For sports centre courses please call LVC sports centre on 890248

NOVEMBER 2014

1 Farmers' Market, 9am	LVC
2 All Soul's Service, 6.30pm	St Mary's
3 Camera Club, 7.15pm	CC
4 Open morning, 9.30am	LI
4 Theatre matters, 6.30pm	LVC
4 WI, 7.30pm	VH
5 Linton Reading Group, 8pm	VH(upstairs)
6 Linton lunch club, 12noon	Red Lion, Horsheath
7 Police surgery, 10am to 12noon	Police office
8 Mothers' Union Toy & Book Sale, 2.30pm	VH
8 Book Launch, 2.30pm	36 Symonds Lane
8 Linton Fireworks' Display, 6pm	Camping Close
9 Lighthouse, 10.15am	URC Hall
9 Remembrance Service, 2.30pm	St Mary's
11 VIP group, 2pm	Chalklands
11 Gardening Club, 7.30pm	VH
12 Community Navigator, 10am-12noon	HC
14 Quiz Night, Friends of LVC, 7.30pm	LVC Main Hall
14 Healing Service, 7.30pm	URC Hall
15 Linton Jazz concert, 7.30pm	Linton Granta school
16 Walking Group, 11am	Church Lane
16 Messy Church, 2.30pm	St Mary's
17 Open morning, 9.30am	LI
18 Historical Society, 7.30pm	VH
19 Cambridge Hearing help, 9.30-12noon	HC
20 Parish Council Meeting, 8pm	CC
22 Linton Music Society, Concert 7.30pm	St Mary's
22 Granta School, Christmas Fair 1.30-4pm	Granta School
23 Police surgery, 1pm-3pm	Police surgery
25 ACEs Lunch, 12.30pm	Sports Pavilion
28 Christmas Workshop, 10-12noon	Designer Drapes, Hadstock

DECEMBER 2014

6 Christmas Craft Fair, 2pm	URC
6 Granta Playgroup, Christmas Fair, 2-4pm	VH
8 Camera Club, 7.15pm	CC
11 Linton Lunch Club, 12 noon	Red Lion, Horsheath

KEY: CC Cathodeon centre, CP church pavilion, D&D Dog and Duck, HC health centre, LH Linton Heights school, LI Linton Infant school, LVC Linton village college, RG recreation ground, URC United Reform church, VH village hall.
Library times: Mon closed; Tue 10am-5pm; Wed 4pm-7pm; Thurs 2pm-5pm; Fri 10am-5pm; Sat 10am-1pm.
Linton refuse collection: 3rd and 17th November.
Linton recycling collection: 10th and 24th November.

A TOUCH OF NAILS

GELISH MANICURES & PEDICURES
PERFORMS LIKE A GEL APPLIES
LIKE A POLISH
Call Michelle on
07866 017 801
supcik@talktalk.net
HORSEHEATH

For All Alterations to LADIES' or GENTLEMEN'S CLOTHING

Ring HEMLINE
Tel: 01223 891034

Remember, remember.... firework safety

FIREWORKS and bonfires can be plenty of fun for all the family to enjoy. The fire service recommends going to an organised firework display instead of holding one at home. However, if you do use fireworks or light a bonfire at home, we would ask residents to be aware of our safety advice to ensure it is just their fireworks that go off with a bang.

- Keep fireworks in a closed box and always follow the instructions
- Light them at arm's length using a taper and stand well back
- Never go back to a lit firework
- Never put fireworks in your pocket or throw them
- Don't light bonfires in unsuitable weather, particularly in windy conditions
- Don't leave bonfires unattended
- Build bonfires well clear of buildings, fences and hedges
- Never use flammable liquids to start the fire
- Never burn dangerous rubbish such as aerosols, paint, foam furniture, rubber tyres or batteries
- Before you light the bonfire, check that children and animals are not hiding inside and are at a safe distance away.

Leanne Ehren
Media & Communications Officer

Superfast fibre broadband is a step closer

SOMETIME in the next few months Linton will get superfast broadband and some of us will actually be able to get much faster broadband to our homes. This is because the current copper cables to the green cabinets are being replaced by fibre optic cables.

You can find out more by looking at the open-reach website www.superfast-openreach.co.uk/where-and-when/putting-in-your-postcode-and-looking-at-the-map.

At the moment a pink flag on the map shows that broadband is coming to Linton soon. In a few months time the results will most likely show information about the single (green) street cabinet that serves your property.

If you then go to www.openreach.co.uk/orpg/home/products/super-fastfibreaccess/downloads/sffa_exchange_lists/coming_soon.pdf and find Linton on the exchange list, you will see that the BT exchange on Back Road should be connected by 14th December. Connection from the green cabinets to your home will be by copper cable so the final speed of your broadband will be determined by this cable.

From two weeks after the exchange goes live (hopefully on 14th December) you will be told that your cabinet is accepting orders, the next step is to refer to the line checker on your chosen service provider's website to express an interest in being connected.

Fran Armes

PLODDING ALONG An update on police matters

A MEMORIAL for a grandfather and grandson, who were killed in 2011 in a collision on the A1307, was stolen from the scene of the crash. The memorial to Michael Kidd, 66, and Joshua Bysouth, 13, was stolen between noon and 7pm on 22nd September from the side of the A1307 at Linton. Anyone with information about who took the memorial or where it is now please contact PC Jay Taylor, on 101 or Crimestoppers, anonymously, on 0800 555111.

Between 6.15 pm on 25th September and 8am on 26th September a Ford transit van was broken into in Harefield Rise. Access was gained by smashing the driver's side window. A small amount of cash was taken from inside.

Between 7.30pm on 25th September and 7.30pm on 26th September a Vauxhall van had the side window smashed. This sounded the vehicle alarm and fortunately nothing was stolen.

At around 1.57pm on 26th September a driver drove off without paying at a fuel station on the A1307. CCTV is being viewed and enquiries are ongoing.

Between 9am on 7th September and 6pm on 25th September three signs relating to an event at the local church in Linton were stolen from where they had been placed. One at Coles Lane, one on the A1307 and one on the High Street.

A purse (including cash and cards) and a travel sweet tin containing money was stolen sometime between 4.30pm and 5pm on 3rd October during the flower festival in St Mary's Church. Reference Crime reference number CF0378831014.

Between 10am and 1.30pm on 12th October, two vehicles were broken into in the car park area of a business premises in Balsham Road. Windows were smashed on both vehicles and handbags and contents were stolen.

Also on 12th October between 1.15 and 1.30pm a driver drove off without paying from a garage on the A1307.

If you feel you are suffering from ASB (Anti-social behaviour) in your area then please call 101 or 999 when it is happening.

Linton recreation ground/skate park area

I HAVE a small amount of information regarding older youths intimidating younger youths at the skate park and possibly offering drugs. If anyone has any information regarding this or wishes to raise further concerns they can contact local officers on the following email address SCambsCops@cambs.pnn.police.uk, or visit me at one of the surgeries below. Alternatively call 101 and raise an incident.

The next police surgeries to be held at Linton Police Office based at the Fire Station are :

Between 10am and 12noon on Friday 7th November

Between 1pm and 3pm on Sunday 23rd November

PCSO Leanne Fisher
Part of the Sawston Policing Team

Festive floristry workshops

HAVE you ever dreamed of creating the perfect table centrepiece for a party or a stunning hand-tied bouquet to amaze your friends and family, or perhaps decorate your home with your own Christmas creations? Learn to master the beautiful art of floristry at a series of workshops being held in Hildersham in the lead-up to Christmas.

Workshops include Table Arrangements, Flowers as Gifts, designing a Christmas Door Wreath, Festive Hand-tied Bouquets and finally designing a Centrepiece for your Christmas table.

Held on Saturday and Sunday mornings the workshops offer you the perfect opportunity to learn about flower design. You will be taught in a relaxed and friendly environment following the tutor, Sarah, step-by-

step. The cost of the course includes all the flowers, foliage and tools required to make your own floral creation to take home.

With 25 years' experience of teaching and an extensive career in floristry, Sarah is both skilled and qualified. She is calm, approachable and used to dealing with cautious beginners. She will put you at ease, give you confidence to try new ideas and make sure that the class is fun and informative.

For more information or to reserve a place on a workshop please email info@thecambridgeflowerschool.co.uk or call me on 655661.

www.thecambridgeflowerschool.co.uk
Sarah Clerke

Jazz fund raiser for Granta

LINTON JAZZ is holding a fundraising concert at 7.30pm on Saturday 15th November at Linton Granta School.

Tickets priced £10 for adults and £5 for children and seniors, are available from me on acolley@granta.cambs.sch.uk or phone 07840 924496

The ticket price includes a ploughman's buffet but as we have no alcohol license, please bring your own if you want any.

Andrew Colley

KJL Roofing

All roofing repairs, lead-work, renewal of pitched or flat roofs

New guttering, repairs/unblocking
Free estimates before any work commenced
25 years + Experience

Tel: 01223 892542
Mob: 07958 618440

Nina, Carl, Nicola and Sue welcome you to

BOYZ & MEN BARBER SHOP

Opening Hours:

Monday Closed
Tuesday 9:00am - 6pm
Wednesday 9:00am - 8:30pm
Thursday 9:00am - 6pm
Friday 9:00am - 6pm
Saturday 8:00am - 3pm

Fully air conditioned

LATE EVENING 'TIL 8:30PM
Wednesday

Traditional Hot towel wet shave
no need to book an appointment.

Special rates for senior citizens Tuesday - Friday only

113^A High Street, Linton
Tel: 01223 894481



Michael Beaumont Butchers Ltd. Family Butchers Est. 1965

Quality meats from local farms including beef raised on our own farm

Award winning Pies

Christmas Orders now being taken

Tel: 01223 894224
beaumontsbutchers.com
High Street, Linton

A SAXOPHONE and clarinet quartet will give the next Linton Music Society concert at St Mary's church at 7.30pm on Saturday 22nd November.

Simply Reeds will perform their highly entertaining close-harmony arrangements of music in a wide variety of styles, from light classical and baroque through to swing and jazz.

Tickets (£12, concessions £10, students £2) will be available on the door, from Sweet Talk News 894808, or online at www.saffrontickets.com
Linda Bird, 893600



Four in harmony
Picture supplied by Simply Reeds

Su Matthews

Back 4 Good Practitioner
Level 4 Advanced Pilates Teacher
Back Care Professional

W: www.bodydesignpilates.co.uk
E: bodydesignpilates@hotmail.com
M: 07986 692334

Back4Good

BODY CONTROL PILATES
CERTIFIED TEACHER

backcare PROFESSIONAL

The Quality for Health and Beauty
www.backcare.org.uk
Approved by the State

Register of Exercise Professionals

A.J. COPELAND & CO.

Chartered Accountants, Linton

Audit, Accountancy, Tax and Consultancy Services for Business and Individuals

Computerised Self Assessment Tax Return Service

For FREE initial consultation phone
01799 506602

Email: ajcopeland@compuserve.com
website: www.ajcopelandca.co.uk

AJB FENCING

www.ajbfencing.co.uk

Fencing - Decking - Gates
All Groundworks
Free Quotations
Quality Service

01223 894795
07813 070542
andy@ajbfencing.co.uk

DACRE LONG Local Painter and Decorator

66 Chalklands, Linton

Professional work to highest standard for over 15 years

Trade and Private Customers

Free quotes with written specification
Phone 01223 893176
or 07837513837
Discounts for Senior Citizens

Carpentry, Plumbing, Tiling
Door/Window Replacement
Kitchen/Bathroom Refitting

Fencing & Decking
Painting/Decorating
Flat Pack assembly

Property Maintenance

Steve Jackson

stevejacksonltd@hotmail.co.uk

Aerial Upgrades & installations
Satellite dishes installed

Steve Jackson
Office 01223 893896
Mobile 07963 854653

DRIVES & PATIOS

HOUSE EXTENSIONS

HOME IMPROVEMENTS

PAINTING DECORATING

A & T Groundworks Ltd

FRIENDLY SERVICE LARGE & MINI DIGGERS FOR HIRE
Call Ashley on 01799-520298 - Mobile 07803745637

Chapel

Independent Financial Advisers

SPECIALIST ADVICE ON
Personal Financial Planning - Pensions
Investments - Mortgages - Protection

FREE Initial Consultation - Without Obligation

Ian Cross DipPFS
01223 892821

E-mail: ian@chapel-ifa.co.uk Website: www.chapel-ifa.co.uk

De-Salis House, 6 Hillway, Linton, Cambridge, CB21 4JE

Chapel Independent Financial Advisers LLP is a limited liability partnership which is authorised and regulated by the Financial Conduct Authority
Registered in England & Wales No. : OC350431

LINTON COUNTRY MATTERS

Text by Julia Napier and illustrated by Maureen Williams



Where do the butterflies go in winter?

THE answer shows how every species occupies a separate niche in the natural world. The Peacock, the Red Admiral and the Small Tortoiseshell take refuge in the hollows of trees, wood piles, clusters of dried leaves, or buildings conveniently supplied by human beings such as sheds, attics, church towers, disused tunnels, or old pill boxes. If the temperature rises high enough on sunny days, they emerge to bask on walls and stones before looking for nectar on late flowering plants such as ivy.

However, the majority of Red Admirals do not survive cold winters. The main summer population arrives here from the continent where the females have already mated. As the days grow colder, Red Admirals can be observed heading south, attempting a reverse migration. Recent studies have indeed recorded a certain amount of success. (Just in passing, the insect was first called the Red Admirable, which makes sense.

Naval uniform is, as we all know, navy blue).

Another hibernating butterfly is the yellow Brimstone. They emerge in July and August and feed on late summer flowers. They hibernate in bushes and small trees, hanging under stems and twigs with wings close together and folded down so that they look like a faded leaf.

A small midwinter pleasure is a Peacock or a Red Admiral sunning itself on a wall but the lovely yellow butterfly winging across your garden in March or April is the herald of the spring. The days are at last warm enough and the chaps come out to check their pulling power. The female butterfly, a

paler, lemon yellow, tends to arrive a few days later and if you are lucky you may see a mating dance as they swirl and tumble in ecstatic harmony.

Other butterflies overwinter at different stages of their life cycle. For example, the caterpillars and pupae of blue butterflies overwinter near the food plant and are milked by ants, which also protect them from birds.

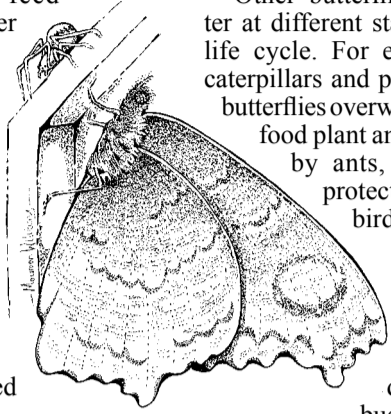
The hair-streaks spend the winter as eggs hidden at the bud point or the fork of a twig. The Orange Tip overwinters as a chrysalis anchored to a twig and hanging from it by a silk thread set at an angle to the stem, looking like a dried leaf.

The Large White caterpillars which have decimated your cabbages and nasturtiums crawl away over winter as light

brown pupae in bushes, fences or walls. However, the Small White chrysalis can change colour to match its hiding place, a bit like a chameleon.

An odd excrescence on my green water butt was a bright green pupa. The butterflies of grassland among the stems of grasses as eggs, or as small caterpillars, or pupae, which is why it is important to leave areas of longer and shorter grass for next year's butterflies, assuming you have a garden large enough to include a wild-life area.

But what about the Painted Ladies who sometimes come here in large numbers? Recent research using radar records revealed that Painted Ladies do not just attempt a reverse migration, they actually fly south at an average altitude of over 500 metres and at speeds up to 30mph if the conditions are favourable. Where they settle, they start breeding again. They don't bother with surviving winter. How sensible.



Out of the mud, gravel and clay

THE Gardening Club's AGM was a swift affair this year.

The chairman's report, show report and details of this season's programme of talks highlighted the energy and enthusiasm of gardeners in Linton. We thanked Roger Lapwood for all his help as he stood down from the committee and welcomed Anita Daws.

Once the formal business of the evening was concluded, the club was treated to Ron Pitkin's wonderful slides of the Royal Horticultural Society's Hyde Hall garden. The photographs were brought to life by Wendy Foster's entertaining and informative commentary.

As you yearn for better growing conditions in your garden, consider visiting Hyde Hall. The garden was created by Helen Robinson, one of the most accomplished amateur gardeners of her time, on an unforgiving site. When she arrived, Hyde Hall had only six trees on the top of a hill, without any garden. She tackled a cold and windy site where the



Bill & Ben!

hilltop was gravel and the soil on its slopes was sticky clay. The garden today is an amazing testament to her efforts.

The club next meets on 11th November for a thought provoking talk from Peter Morris. He will be challenging us to look beyond flower filled containers with his talk entitled *Container Growing: vegetables, fruit and flowers*. The meeting starts at 7.30pm in the village hall and both members and visitors are most welcome to join us for some inspiration.

One final note, our enthusiastic Show Secretary is keen to remind everyone to plant those prize winning entries now, ready for next year's show on Saturday 25th July 2015.

Kirsten Newble 892425, lgcsecretary@yahoo.co.uk

Top: delphiniums by Ron Pitkin, bottom: aka Jim and Ron by Wendy Foster both pictures taken at Hyde Hall in June

LINTON'S LITTLE EXPLORERS

pacey **Ofsted Outstanding 2011/2012**

l_l_e@hotmail.co.uk
T: 01223 894464
M: 07802 177688

HELPING ME LEARN THROUGH PLAY

- Childcare Vouchers Accepted
- Free Nursery Education Funding Accepted
- Qualified Artist and Forestry School Trained Staff
- Regular Trips and Outings

SPACES AVAILABLE FROM SEPTEMBER

Please enquire to book a viewing at our setting

Discreet Pest Prevention & Control

A J PEST CONTROL

FAST AND EFFECTIVE
 PROFESSIONAL SERVICES
 COMMERCIAL - DOMESTIC - AGRICULTURAL

npta
 National Pest Technicians Association

- ⊙ Wasps, Hornets & Flies
- ⊙ Mice and Rats
- ⊙ Fleas, Bed Bugs and Ants
- ⊙ Bird Control
- ⊙ Squirrels and Rabbits
- ⊙ Cockroaches

Based in Linton
 Contact: 01223 530988 or 07855478824
www.ajpestcontrol.co.uk

The Crown Inn, Linton
freely available

Booking now for Christmas Parties

Monday fresh Fish, Chips, Peas for £5.95
 Tuesday 8oz prime Steak & Chips for £7.95
 Wednesday FREE dessert with any main course
 Thursday Home-made Tapas
 Friday Gourmet Burger Bar
 Sunday Lunch traditional roast for £9.95

www.crownatinton.co.uk
11, High Street, Linton, Cambs Tel 01223 891759

Across the globe, the Kumon Maths and English Programmes advance students beyond their school level.

Contact your local Instructor for a free assessment.

Linton Study Centre
 Karen Tumber **01223 893578**

KUMON **kumon.co.uk**

A WORLD-CLASS EDUCATION FOR YOUR CHILD

POT POURRI 116

Square in a field area is?

A TRIANGULAR garden has the dimensions 13,14,15 metres.

If a square plot is made inside the triangle, what is its maximum area?

Hint: Pythagoras must have had this field.

Solution to 115 – Crop circle Area?

There is more than a single method for determining the area of the field that is not touched by the crop circles. Area of untouched field is 14,292 square metres out of a field area of 40,000 square metres.

Urania

NEWS IN BRIEF

Linton Granta school Christmas Fair

THE Friends of Granta School are holding their annual Christmas Fair from 1.30pm to 4pm on Saturday 22nd November at the school, which is in the grounds of Linton village college.

As usual we will have many stalls providing gift ideas ranging from candles, cards, chocolates, jams and pottery to name but a few so please come along and start, or finish, your Christmas shopping.

There will also be the usual stalls such as tombola, raffle, lucky dip and also refreshments and delicious home-made cakes.

We look forward to seeing you there.
 Annette Leeman, 01799 528107

Linton Granta playgroup Christmas Fair

LINTON Granta Playgroup invites you to their Christmas Fair from 2-4pm on Saturday 6th December in Linton village hall. There will be tombola stalls, face painting, cakes and much more, with a special visit from Father Christmas. All are welcome – come and join in the fun.

Helen Boffey

Coffee morning for Save the Children

THERE will be a coffee morning in aid of Save the Children from 11am till 12.30pm on Friday 7th November at 11 Fox Road, Balsham by kind invitation of Mr and Mrs Richards. Christmas cards and goods will be available.

Mr and Mrs Richards

Hildersham in November

IT'S TEATIME will be held at 3pm on Thursday 6th November at Hildersham village hall in aid of the Pink Rose Appeal for Breast Cancer Research. Everyone is welcome.

OUR Quiz Night will take place at 7.30pm on Friday 14th November in the village hall in aid of church funds. £8 per ticket including a hot supper. Please bring your own drinks – glasses will be provided. To book places please phone me.

Jean Morton 894730.

CLEAR out for Christmas will be from 6-8pm on Tuesday 18th November at Hildersham village hall. Bring your unwanted but still good items to donate to Emmaus: furniture, curtains, books, crockery, electrical goods. Everything is put to good use by this excellent organisation.

THE next Hildersham Lecture will be held at 7.30pm on Friday 28th November in the church. This month's speaker will be Per Hall, Consultant in Plastic Surgery at Addenbrooke's hospital who will give a talk entitled My Busman's Holidays with Operation Smile in Ethiopia. Entry £5 (family £10) including refreshments.

For any queries please contact Cathy Myer on 892848 or at catherinemyer43@btinternet.com

Linton Cabs TAXI

Pre-book only Linton based taxi service

Airports - Train Stations - Local Travel

Linton Cabs **Tel: 07958 657300 / 01223 890965**
Email: lintoncabs@btinternet.com

Linton Leisure Centre

~Fitness Studio ~ Badminton ~
 ~Tennis ~ Cricket Nets~
 ~All Weather Pitch~
 ~ Group Exercise Classes ~

Membership or Pay & Play options available

ZUMBA FITNESS IS HERE!

01223 890248 **LINTON VILLAGE COLLEGE**



The Derbyshire Post



RECENTLY a parent commented that The Derbyshire Post and the college newsletter tend to contain only the positive news about the college. This is without doubt true as the nature of a publication like the newsletter is that the editor Tony Kelly uses the format to celebrate achievement and I think our parents enjoy seeing photographs of their children doing fantastic things.

The truth is that, because the college enjoys considerable success, there is always a huge amount of material to draw on. This month, therefore, instead of telling you about the recent victories of the rugby teams or the fact that our last Year 11 scored more attainment points at GCSE than any other state school in Cambridgeshire, I will share some less glorious moments with you.

Let me tell you about the recent Dalek invasion. We have been experiencing real problems with our telephones. Sometimes they have not worked at all, sometimes we have experienced intermittent faults which never reveal themselves when an engineer looks into the matter. Sometimes they appear to be working from our end but those ringing in to us have been listening to some very strange voices emanating from our offices. Apparently we have sounded like Daleks for most of September. I wouldn't mind so much if someone had felt able to tell me that I sounded like a Dalek.

What alarms me is that either people were too frightened to tell me or they thought that what they were hearing was my normal speaking voice. Headteachers can be figures of fear but accepting a stair-phobic, exterminating alien as your local school leader may be taking the figure of authority thing too far.

I apologise if the phone situation inconvenienced, annoyed or, indeed, frightened you. Normal service has now been resumed. No need to call in Peter Capaldi quite yet.

Caroline Derbyshire, Principal

A lottery winner in the village

MURRAY McKenzie's son will perhaps get an extra special birthday present in February.

Murray, of Palmers Close, Linton has won £215,228 on the EuroMillions lottery – by entering what he thought was his son's birth date – but he was wrong by one day.

Like many people he had been regularly playing the lottery using family birthdays, without success. Almost embarrassingly this time he won with the wrong date.

The Linton Cabs' taxi

driver, Murray was brought up in Linton and attended the village college. Murray and his wife Pat who have lived in Linton since they were married 43 years ago, say they have no plans to change their lives as they are very happy where they are with son Tom, daughter Katie Lindsell and families all living locally.

But maybe Murray will be taking things a bit easier now, which might just mean a few more hours on the golf course.

Kate France

Barn Owl Accommodation

Three private self-contained annexes all in Linton

www.barnowlaccommodation.co.uk
Call Michelle on 07584 430051

WATERCOLOUR PAINTING

Explore the magical world of watercolour painting with an experienced artist, in the comfort of your own home.

For details, please contact:
Susan Mackenzie (01223) 891521 or: sjhmac2@yahoo.co.uk

Springfield House B&B

14/16 Horn Lane, Linton
River views from bedrooms & guest lounge
Tel: 01223 891383
www.springfieldhouseinton.com

Students 20% off **THE ROOM** Special Kids Prices

37 Bartlow Road, Linton
Tel: Pippa (01223) 890890

OPENING TIMES

Mon	Closed	Senior Citizens
Tues	9-5 pm	Tuesday & Wednesday
Wed	9-7 pm	Late opening until 7 pm on
Thurs	9-7 pm	Wednesday & Thursday
Fri	9-5 pm	
Sat	9-3 pm	

Benten & Co.
Chartered Certified Accountants

We are a friendly, well established firm, large enough to deal with most accountancy and taxation matters.

Please telephone for an initial consultation (without obligation)

Abbey House, 51 High Street, Saffron Walden
Telephone 01799 523053
www.benten.co.uk



The Way We Were

by Garth Collard

The Queen's House in the High Street

QUEEN'S HOUSE opposite the Crown, (at one time known as Barnet House) is one of the most attractive houses in the High Street. The oldest part of the house dates from the 17th century and the front east to west range was built in the 18th century.

In 1947 the house was purchased by Mr and Mrs Derek Manning. Their 16-year old son Matthew had psychic powers and he saw a shadowy figure on a staircase dressed in the style of the 1720s. He wore a green frock coat with frilled cuffs and a cream cravat. Matthew spoke to him and the ghost answered saying his name was Robert Webbe and he had been born in the house in 1678 and died in 1733. He claimed to have built the front portion of the house.

Matthew communicated with the ghost with the unexpected power of automatic writing and exchanged messages with Webbe who wrote around 500 names and dates



Queen's House or Barnet House around 1915

in a variety of styles on the walls in Matthew's bedroom for six days in July 1971. The signatures were of men living in Linton at that time. The names included Webbe and other people alive at that period and earlier. They have since been painted over.

Matthew now lives in

Bury St Edmunds and is a well known psychic. His experiences are recorded in a book entitled *Signatures on the walls of Queens House in Linton*. Writing experts examined the signatures, including Matthew's, and reported that all of them were different. Derek Man-

ning spoke of experiencing vividly real sensations whilst lying in bed. He felt pain and tingling in his legs and the bedclothes and objects were disturbed. There was a smell of tobacco yet no-one in the family smoked.

Matthew later found there was a Robert Webbe living in Linton around that time. He discovered writing on one of the bricks at the front of the house which had the name of Robert Webbe and the date 1731. More initials and the same date were discovered on the roof leading.

The ghost of Robert Webbe would appear to be genuine. However, research into the manorial property records by the late Reginald Stevens established that Robert Webbe did not live at Queen's House but had a residence at what is now 115 High Street. This Robert Webbe was a builder and glazier and might well have worked on the front section of Queen's House.

Garth

Now a winter musical selection box

AFTER the success of the Midsummer Musical Picnic, Linton Youth Music is organising their next musical extravaganza and once again we need you Lintonians to step up to the challenge.

We're planning a celebration from 4pm on Sunday 14th December at St Mary's Church.

We will be performing some of your favourites from the summer event and serving mulled wine and other refreshments. We hope to finish the afternoon with a collaborative carol and will provide musical parts written for any instrument – so bring yours along.

Tickets will be £2.50 for adults, children free, so come and be part of the celebration of Linton's musical talent.

For further details and to fill out an *expression of interest* form please go to our website www.lintonmusic.org.uk or contact us on Facebook. To contact us directly go to lintonyouthmusic@gmail.com. We would be delighted to hear from you.

Josephine Paterson 893582

PLANNING APPLICATIONS

S/2179/14/FL Ms J Swift, 4 Wheat Croft. Two storey side extension.

S/2274/14/FL Mr & Mrs R Tooley, 42 Back Road. First floor rear extension.

S/2305/14/FL Mr Colin Nelcol, 17 Cambridge Road. Alteration and conversion of existing property to form three bungalows and erection of two new detached bungalows.

Football club continues to support the community

IT would be easy to believe that a football club is devoted only to football. However, Linton Granta Football Club has been a crucial asset to Linton society for over a hundred years. Since the creation of the club in 1884 and the Thursday league in 1903, Linton Granta has been an organisation dedicated not only to fashioning a team the village could be proud of, but to helping the community to thrive.

Funding and hosting village events, giving logistical aid and manpower where needed, and providing entertainment to anyone every Saturday are all examples of the club's efforts in local daily life.

With the creation of the updated pavilion, this relationship between the club and the community has been reaffirmed. The space can be used for any event, public or private. Fresh ideas are always welcome – if

you have one seek out Alan O'Dell on a Saturday afternoon at the pavilion.

The club is always running evenings tied into the football but open to anyone. For example, the hospitable and festive Christmas Draw on 20th December after the final match of the year and the New Year's Eve Party with tickets soon becoming available.

Sports' clubs have a bad reputation of only looking after their own, but Linton Granta is the exception to that rule. It is a community asset that, with the welcoming mentality and facilities to cater for all, will be for Linton, for ever.

Brett Fegan

PLUMBLINE
PLUMBING AND HEATING ENGINEER
PROFESSIONAL DOMESTIC PLUMBING SERVICE

Including Property Maintenance
Painting: Tiling: Plastering: Carpentry

Call John on
01223 893903

Supcik@talktalk.net
Fully Qualified and Insured
Friendly and Reliable Service No Job Too Small

LINTON PAVING COMPANY

YOUR LOCAL LANDSCAPING BLOCK PAVING & PATIO SPECIALIST.

PROPERTY MAINTENANCE
Int/Ext Painting, General Repairs
FRIENDLY SERVICE.
FREE QUOTATIONS
Tel: Andre Jacobs

01223 890060
07765 594398

Local Ironing Service

Fast, friendly ironing service tailored to suit your needs.

Working overtime? Not enough hours in the day? Can't face that stack of ironing?

Economical hourly rate.
Free collection/delivery available.

Call Carolyn on
01223 891762
07961 919374
carolynturner63@yahoo.co.uk

STEVE WEBB
Painter & Decorator

Over 30 years experience
CITY & GUILDS CERTIFICATES

Montford Barn
Horseheath
Tel: 01223 893864
Mobile: 07772991373

L.B. CABS LINTON

For all your travel needs

Tel: 01223 892986
Mob: 0771 2420675

MOPS HAIR SALON

HAIR BY JO DENNY
WOMEN | MEN | CHILDREN
CUTTING & COLOURING

41 LINTON HIGH STREET
(BEHIND BOSWELL'S BAKERY)
t: 01223 893 285

GLENWOOD BOLTS & SCREWS LTD
www.glenwoodbolts.co.uk

SUPPLIERS OF QUALITY FASTENERS, FIXINGS & SILVERLINE TOOLS

Unit 2 Lintech Court
The Grip Industrial Estate, Linton
Cambridge, CB21 4XN
Tel: 01223 892095 / 893931
Fax: 01223 894122



Parish Council Matters

Village views

Parish Council Matters is written, edited and published by the Parish Council with the support of the Linton News Team.

WELL, it's that time of year again. Summer has given way to autumn and the shorter days and cooler nights herald the arrival of a new sporting season on the recreation oval as the cricketers up stumps and the footballers take to the field. The leaves are falling and, coupled with the crisp mornings, it's the perfect time for a stroll around our beautiful village. There is nothing better than a good walk followed by a coffee at Linton Kitchen.

While out and about you may have noticed the village sign has disappeared. Don't panic, it's being renewed and restored by Darryl Nantais and will soon be returned to its pride of place by the bus shelter next to the bridge over the river. With the prospect of a newly designed garden, we would like to hear from volunteers who can lend a hand or help with materials. We look forward to this being completed in the spring.

As many of you know, I used to be a scheme manager for the council and have elderly relatives in the village I care for. I'm here to help with any concerns you may have about our elderly residents and anything we can do to assist them. If you have any concerns, please feel free to call me on 893477 or email jwilsonatlinton@btinternet.com - I welcome your ideas that can make the village an easier place for the elderly to use and enjoy.

We also need to protect and appreciate the vital role of our village warden, Venetia Brown, whose efforts can often go unnoticed. You may have seen her around the village helping with small tasks such as shopping, collecting tablets and generally keeping an eye on those in her care. It is such a valuable service for any village and can only be truly valued and appreciated if you have relatives or friends who need a helping hand.

The new homes on Cambridge Road will bring new people to share our lovely village which is full of such wonderful amenities, including

the new butchers. Good luck to them.

I would also like to take this opportunity to congratulate Linton Kitchen on their recent award - Cafe of the year 2014 from the Haverhill Echo on 15th September 2014. You may recognise this cake (shown on the right) from the Linton Kitchen Facebook page.

And just a quick reminder that a 20mph speed limit applies on the main route through the village. I'm sure I'm not alone in sometimes feeling intimidated when I stick to the speed limit as cars and motorcycles try to push from the rear, especially along Coles Lane.

Church

I was so pleased to see the flower festival has returned, later than usual in October instead of June but as a family wedding was held there in June, it proved very convenient.

Andre and Charlotte Pienaar were married at St Mary's



Picture taken by Tanja Niemi-Wilkins



Cake picture taken from Linton kitchen Facebook page

It was a beautiful day. The weather was perfect and all our

guests enjoyed a very special village experience. The Owl Barns and Judy Rossiter were amazing and organised accommodation for overseas visitors. Many thanks to you both. Also, special thanks to Lesley and Nanette for the excellent service and rehearsal.

Dogs off leads and fouling

Some residents have recently mentioned to me that dogs have been fouling in their gardens along Joiners Road. It has become so bad that one resident has had to put up this notice (shown on the right) on their gate.

I notice the football pitch is suffering the same problem! It is an offence not to clean up after your dog. But more than that, residents out enjoying our village should not have to negotiate their way around dog mess left so thoughtlessly by its owner.

Thanks to the hard work of local residents, we have a superb refurbished play area and it is upsetting to see dog mess outside the gate. As well as being annoying to step in, it is also a health hazard for the many young children who use the area.

Please be vigilant, and if it is your dog fouling please pick

Calling all Linton based community groups ...

If you would like to apply for parish council funding for the next financial year please contact the parish council office for a grant application form or alternatively download one from www.lintoncambridgeshire-pc.gov.uk under the topics heading.

All requests must be accompanied by an annual report and/or current bank statement and be received by the 30th November 2014.

LINTON PARISH COUNCIL

Linton Village Hall, Coles Lane, Linton, Cambridge CB21 4JS Tel: 891001
Clerk to the council – Mrs Sue Parry
Interim Clerk to the council – Mrs Marilyn Strand
Email: lintonpc@btconnect.com
Website: www.lintoncambridgeshire-pc.gov.uk
Office open: Monday, Tuesday, Wednesday and Friday 9am – 12noon, closed on a Thursday.

Or by appointment

Dates for full council meetings:
20th November and 18th December 2014
All meetings held at the Cathodeon Centre commencing at 7.30pm

THERE is currently a vacancy for a parish councillor. If you are interested in being co-opted onto the council please come along to a meeting.



Notice regarding dog fouling placed on a Joiners Road gate

Picture taken by Ian Wilson

it up and put it in the bin. We have many dogbins throughout the village, especially around the recreation ground so there really is no excuse not to take responsibility for your dog's mess. Please don't be afraid to remind irresponsible dog owners of their obligation to clean it up!
Thank you.
Cllr Jacque Wilson

the flower boutique

Treat yourself, your friends and family to the freshest seasonal flowers. Bespoke design service for weddings and funerals.

41 high street . Linton . 01223 891740
www.theflowerboutique.co.uk

Westlakes

Painting & decorating exterior and interior

Les Westlake
Mobile: 07929 501101
Tel: 01223 892866

Clive Westlake
Mobile: 07900492127



ClearTax

& ACCOUNTING LTD

Quality, friendly accounting services and taxation advice.

Sole trader and small company specialist.

Free initial consultation

The Granary, Yews Farm Yard, Hadstock

t: 01223 894036
e: janine@cleartax.co.uk
www.cleartax.co.uk

SHINE WINDOW CLEANING SERVICES

INTERIOR AND EXTERIOR WINDOWS, GUTTERS, FASCIAS, CONSERVATORIES AND PATIO CLEANING

62 Bartlow Road, Linton, Cambs CB21 4LY
Tel. 01223 890491
Mob. 07587 866309

PLEASE CONTACT FOR A FREE QUOTATION
FULL PUBLIC LIABILITY INSURANCE
shinewindowcleaningservices@gmail.com

easy-drive
school of motoring
Tony Holmes
Grade 6 Instructor

£22 per hour
01223-893346
easy-drive-som.com

CHIMNEY SWEEP

J. L. WIGHT
Guild of Master Sweeps.
Qualified advice Problems solved.
Certificates issued.

www.camsweep.co.uk
01954 253315
26, Cow Lane, Rampton

The Dog & Duck
63 High Street, Linton
Tel: 01223 890349
Pub & Restaurant
Open All Day, Every Day

Idyllic Riverside Thatched Pub and Restaurant.
Hearty Home-Made Pub Food.

Free pudding with meal on Tuesday,
Fish and Chips Special on Wednesday
Roasts on Sunday
Book now for Christmas parties
Live Jazz Christmas Lunches in December
www.facebook.com/thedogandducklinton

Linton Complementary Health Centre
2b Bartlow Road, Linton

- Acupuncture, Peter White; MSc, MBACc
- Massage, Peter White; MSc, Dip. Massage
- Shiatsu, Cindy Faulkner; BA, MRSS
- Chiropody, Sharon Bennett; M.Inst.Ch.P
- Counselling, Debbie Soar; NNEB, Dip.Couns

Telephone: 01223 891145
Web Site: www.lintonhealth.co.uk

Councilminutescouncilminutescouncilminutescouncilminutes

ABBREVIATED minutes of the Linton Parish Council (LPC/PC) meeting held at the Cathodeon Centre on Thursday 18th September 2014.

Present: Enid Bald (EB)(chairman); Paul Poulter (PP)(vice-chair); David Champion (DC); Simon Hill (SH); Brian Manley (BM); David Lissimore (DL); Beatrice Ward (Dr)(BW); Graham Potter (GP); Jacque Wilson (JW); Nicola Miller (NM). Clerk: Marilyn Strand. District & County Cllr Roger Hickford, Kate France (press) and five members of the public were also present.

Apologies for absence: Cllrs Jan Bumstead, Brian Cox, Merrie Mannassi and Alison Walker. District Cllr Henry Batchelor.

Councillor resignation: Cllr Mr Keiran Wakley had tendered his resignation from LPC since the last meeting. EB wished him well for the future on behalf of the whole PC.

Declarations of interest: SH declared a personal interest in the update on allotments item.

Chairman's comment: The South Cambridgeshire Parish Council Conference & Community Funding Fair will now be held on 28th October at Cambourne Village College from 10am to 3pm. This should be invaluable for anyone involved with local associations or groups who raise their own funds and attendance is recommended where possible.

The chair will be presenting awards this coming Saturday to winners of the library Summer Reading Challenge which is partly funded by the PC.

The History Society and Gardening Club have started their seasonal events; please support these if you are able to. The Flower Festival is running on 3rd & 4th October and will incorporate a Remembrance Service for WWI.

ACE have planned a coach trip to Kings Lynn on Thursday 25th September and spaces are still available.

Tomorrow is Jeans for Genes Day, a fundraiser supporting the work of Genetic Disorders UK. Please show your support by wearing jeans and donating to the charity if you are able to do so.

Consideration of Planning meeting minutes: Considered. It was thought that the shed at 12&14 Joiners Road may contain asbestos and that South Cambridgeshire District Council (SCDC) should be alerted to this. Action: clerk to write to the planning officer to alert him to this possibility.

The chair asked that Cllr Hickford be allowed to present his County Cllr report before the following two agenda items as he had another PC meeting to attend elsewhere. All agreed.

Presentation from Barry Easton & users of the skate park: Barry Easton, lead youth worker with the Beacon Community Trust (BCT), had sent a written proposal regarding the skate park, which had been circulated before the meeting.

Mr Easton gave a presentation of the BCT's ideas for re-vamping the skate park and surrounding area, including ideas for additional equipment, and stated that the area is currently used by children as young as six, right up to older teenagers of 18 or 19. Users of the skate park also expressed their desire to see the area improved and maintained and stated that this would be an investment into the community and young people in the future.

Members of the Linton Skate Group would like to reciprocate any contribution of an extended skate park from the PC, by contributing to the community of Linton through community works. Ideas include litter picking, helping senior citizens with their gardens and volunteering for community events.

EB asked Mr Easton to create a plan for the area with estimates of the costs involved, including use of the tarmac area for BMX/skateboard use. The PC will investigate other parks in South Cambridgeshire for ideas of costs and the processes involved in this kind of project. Action: clerk to liaise with other PCs who have recently installed skate parks. (Cherry Hinton, Saffron Walden, Cambridge City.)

EB thanked Mr Easton and the youngsters for attending the meeting and for giving an excellent presentation.

Written reports from district councillors: Cllr Batchelor had sent a report which had been circulated before the meeting.

Written report from county councillor: Cllr Hickford had sent a report which had been circulated before the meeting.

Turning off residential street lighting between 11pm/12am and 6am is being considered by Cambridgeshire County Council (CCC). All major roads and intersections would remain unaffected.

A review of the county's library service is currently being undertaken. Cllr Hickford stated that Linton library is an excellent example of how library services should be provided, and hopes that there will be no or minimal change to it.

Following disruption to the High Street this week caused by gasworks, Cllr Hickford now had agreement from CCC that in future there would be more consultation with the PC on such matters.

CCC Highways has a statutory duty to maintain roads in the county, although major road arteries will be prioritised above local roads. EB asked for the results of the traffic flow survey (raw data might not be available for commercial reasons).

LPC's Traffic Working Group had met David Lines from CCC Highways and advice had been taken on many of the current issues faced by Linton. Action: clerk to forward the notes from this meeting to Cllr Hickford when they become available.

EB thanked Cllr Hickford for his report. Cllr Hickford left the meeting.

Written report from the Finance Committee meeting held on 18th September 2014: The following points were considered from the Finance Committee meeting:

- The cost of staffing due to the clerk's absence is forecasted to increase by 25% over the year.
- It had been agreed that the interim clerk would take on the role of Responsible Financial Officer until the clerk's return to work.

- It had been agreed to purchase the Rialtas Financial Software package which had been recommended by two other PCs, with a maximum spend of £2000 to include training for the clerk and Cllr Potter.
- It had been agreed that LPC would give the Monday Gang £500 to buy equipment needed for maintaining the churchyard.

It was proposed by BW and seconded by JW that all points considered be agreed by full council. All agreed.

Presentation from Ian Dewar, Cambridgeshire and Peterborough Association of Local Councils (CAPALC) – Filming & Use of Social Media: Ian Dewar was welcomed to the meeting by the chair. Mr Dewar handed out CAPALC's September Bulletin and highlighted the following points:

- The Local Government Audit and Accountability Act 2014 and the Openness of Local Government Bodies Regulations 2014 reaffirm the right of the press and public to attend and record meetings of statutory bodies such as parish, town and community councils. The regulations also allow the recording, broadcasting and use of social media to comment on council, committee and sub-committee meetings if conducted in a non-disruptive manner during the course of meetings. Prior permission of the PC is not required.

- Councils have a legal responsibility to protect the health and safety of their employees and have a statutory duty to assess risks in the workplace. (Management of Health & Safety at Work Regulations 1999.) This includes outside bodies working for the PC such as grass maintenance contractors.

Action: clerk to follow up with Valley UK regarding their risk assessments for work carried out for LPC.

- Cyber bullying ie the use of force, threat or coercion to abuse, intimidate or aggressively dominate or harass others through email, mobile phones, instant messaging, chat rooms or social networking could bring a PC into disrepute.

The chair thanked Mr Dewar for his presentation.

To Implement the completion of risk assessments on the parish council's assets: The clerk had emailed risk assessment forms, together with guidance notes on how to carry these out, to councillors responsible for assessing LPC's assets. These must be completed by the next meeting due to be held on 16th October 2014.

Update on Allotments: Ian Dewar advised the PC that when

purchasing land for allotments, a check should be made that there would be no 'claw-back' clause if the land was subsequently sold for development.

Garden allotments are proposed by LPC rather than field allotments. Garden allotments can have short-term tenancy arrangements and restrictions placed upon tenants who fail to maintain them.

Update on Rights of Way: DL had circulated his report from the Rights of Way Working Group meeting held on 23rd July and it was considered by the PC. The chair thanked DL for his report.

Update on Bowling Green: BM had circulated a report from his meeting with the Bowls Club on 3rd September. The Bowls Club would welcome ideas for what could be done with the Bowling Green area and it was suggested that an article be placed in a future edition of the Linton News asking residents for their ideas. Action: BM will investigate projects and designs for the area together with Alan Lamb.

Update on Pavilion: BM reported that the six month snagging list had been received for the Pavilion. The PC will receive the final invoice for the work in the near future.

The chair thanked BM for his reports.

Update on Swan Bridge & substation: BW reported that quotes for painting the Swan Bridge are in progress with the clerk. UK Power Networks have agreed to accept the PC's contribution of £300+VAT towards the new housing for the substation and this would be replaced within the next three months. BW also put forward the draft plan for the village sign area for discussion. It was agreed in principle to progress with the plan and an application to the Community Chest fund is currently being drafted by EB. This would cover costs of the hard landscaping and raised beds.

Cllrs Batchelor and Hickford had already confirmed their support for this funding application. The chair thanked BW for her report and for the progress which has already been made on this project.

Correspondence received for consideration: SCDC, payment of Public Open Space and Community Facilities Contributions, planning application ref:S/0613/11/F. This was agreed and signed by EB and PP, and witnessed by NM.

A neighbouring resident regarding the CCC Local Highways Improvement Initiative – footpath and cycle safety. It was agreed that the PC would look at this again when considering its application for 2016-17.

Cambridgeshire Future Transport Working Group meeting, 1st October, Stetchworth. BM and SH will attend to represent LPC.

Monday Gang request for £500 for maintenance of churchyard. Agreed as per earlier agenda item.

SCDC Parish & Cabinet Liaison meeting. PP and NM may be able to attend and will confirm with the clerk.

Cambridgeshire Police Panel meeting, 16th October, Fulbourn. Issues to raise for discussion. Although this falls on the same day as the next PC meeting, DC or AW will attend to represent LPC.

Society of Local Council Clerks members meeting 19th September regarding clerk's attendance. It was agreed that the clerk would attend and claim travel and lunch expenses. Proposed by BM and seconded by PP. All agreed.

Update on Flood Prevention Measures on the Recreation Ground: EB reported that the Environment Agency (EA) had asked for more information in support of the PC's application for Flood Defence Consent, specifically a Method Statement and 'before and after' cross-section drawings of the height of the riverbank. These are in progress and should be ready for submission to the EA in the following week.

Matters for future consideration: The CCTV Working Group should be re-formed and a meeting held as soon as possible.

A meeting of the Cemetery Working Group should be held before the next meeting.

All councillors will be invited to join these working groups and attend the meetings.

Note: Copies of the full minutes, reports and documents referred to above can be inspected at the parish council office.

LONG & SHORT STAY ACCOMMODATION

COTTAGE & CONVERTED BARN

HOLIDAYS, WEEKENDS
BED & BREAKFAST

WEST WRATTING
CAMBRIDGE, CB21 5LU

T: 01223 290492
www.bakerycottage.co.uk

Made to Measure

CAPRI BLINDS

* Verticals * Roman * Roller * Pleated
* Venetian * Wooden

CALL NOW FOR

free quotation - free measuring - free fitting

Vertical Blinds now available
with wand operation.
No Cords
Ideal for Child Safety

Tel: 01223 894020
www.capriblinds.co.uk

KELVIN SCHOOL OF MOTORING

DOE ADI and MIAM
Pass Plus

Instructing for 35 years!

For bookings
01223
892263

16 Back Road
LINTON

www.kelvinschoolofmotoring.co.uk

SQ Car Sales

Quality used Cars

Lintech Court, The Grip, Linton, Cambs CB21 4XN

www.sqcarsales.co.uk

01223 778 448 m: 07908 128 164

LITTLE HANDS NURSERY SCHOOL

From September 2014
Little Hands Linton & Bartlow
Opens 8am to 6pm
And
From November 2014
Opens a dedicated baby room

- We offer very flexible booking for all children
- Main bookings are made for term time
- Holiday club also available - book just what you need
- Bookings made by the hour - build the nursery week that works best for your family

Nursery funding giving 15 free hours of nursery for all 3 & 4 year olds and some 2 year olds available at Little Hand

For further details please contact:
Mandy Norris - nursery manager phone : 01223 897945 e-mail : lh-bartlow@btconnect.com

Little Hands are also atourn, Melbourn & Newton

ProClean

Your Complete Cleaning Solution

- *Carpet Cleaning *Rugs *Stain Removal
- *Car Valeting *Caravans *Motor Homes
- *Upholstery Cleaning *Stain Protection
- *Floor Cleaning / Scrubbing / Sealing / Polishing
- *Pressure Washing of Patios Paths & Driveways
- *Domestic Cleaning * Top Ups & One Off Cleaning
- *Gutter / Fascia Cleaning

*Contract Office Cleaning (Flexible Options)

TEL: 890433 Mob: 0777 375 8355

74 Bartlow Rd, Linton, Cambridge, CB21 4LY

PJB Maintenance

No job too small

Ground work, Patios,
Floor & Wall Tiling,
Fencing, Roof repairs,
Demolition

CPSC Licence
Free Estimates

Call **Peter Belsom** on
Mob: 07799 183308
Tel: 01223 891273

A & R PLASTERING

All aspects of plastering
undertaken:
Plasterboarding
Rendering

No job too small
19 years experience
Free estimates

Mobile: 0774 8627920