

Help your community

Saturday 9th October
from 10am
Pocket Park
See page 4

Established 1987

Over 2,350 copies
distributed free
in Linton,
Hildersham,
Hadstock &
Bartlow

THE LINTON NEWS

www.linton.info. e-mail lneditor@linton.info

October
2005

Vol. 19 N° 7
Publication Date
Monday 3rd October

E & E PLUMRIDGE
Design & Print
41 High Street
Linton
01223 891407

THE DIGGERS MOVE INTO PAYNES MEADOW



Some of the guests invited to the start of the Paynes Meadow extension

Picture courtesy of Hundred Houses Society

Mike Clay of Hundred Houses Society sets the scene

A NEW affordable housing scheme for Linton was started on 15th August by Liz Hezell, South Cambridgeshire district council cabinet member for housing.

The development of 20 houses, bungalows and flats is aimed at local people for rent or part-buy through shared ownership.

The development by Hundred Houses Society is in Paynes Meadow. The scheme was designed by Annand and Mustoe Architects and is being built by Cocksedge Building Services. Linton parish council has been heavily involved in the design of the scheme and will take over maintenance of a new open space when completed. A grant from the housing corporation will be matched by private finance raised by Hundred Houses Society.

Councillor Hezell said "This development is just what is needed to keep villages such as Linton alive and sustainable".

Hundred Houses chief executive, Chris Jackson, commented that the scheme has been the result of successful partnerships with the parish and district councils and would complete a second phase of Paynes Meadow.

Hundred Houses Society is a charitable Registered social landlord. It provides good quality affordable housing for families and single people, including key workers, for rent and for shared ownership.

For further information, contact:

Chris Jackson 315036
or email: cjackson@hhs.org.uk

.....and the important bits from Joan Smith

RESIDENTS will no doubt be as pleased as the parish council to see work starting at last by Hundred Houses Society on the extension to the Paynes Meadow development at the top of Chalklands. The land has lain fallow since the completion of the first phase in 2001. The official start was on 15th August.

Dealing with the important questions first.

How much affordable housing will the new development provide?

There will be six one bedroom flats, six two-bedroom flats, four two-bedroom houses, three three-bedroom houses and one disabled person's bungalow. Of the total of 20 properties, nine will be available for shared ownership. The disabled person's bungalow will be owned and managed by the Papworth Trust. There is already someone in

mind for that property.

How do you get one either to rent or to part buy?

You apply to go on the housing register at South Cambs district council. All the initial allocations will be taken from that list. Afterwards 95% of lettings will come from the same source.

When is the development due for completion?

July 2006.

Now for the nerdy bits!
The total scheme cost is £1,947,758.

Lastly, the community aspect. And here is where praise needs to be given. Hundred Houses have been unusually co-operative in consulting and keeping local people informed. It began with the parish council calling an open village meeting to hear Hundred Houses' proposal, followed by suggestions from the Chalklands residents association based on

what was said at that meeting. Throughout there has been the detailed interest of the planning committee of the parish council. The whole site layout and also details of the outside appearance and interior plans have been redesigned several times as a result of local criticism.

The big gain for the whole village is an important and much needed addition to its open space which is currently well below national recommended standards. There will be a large "kick a ball about" space at the side of houses (where balls can't spoil anyone's front garden) and separate from it, a younger children's play area well overlooked by occupied houses. The open space will also provide somewhere for gentle walking, and the old hedges will be preserved and improved.

The whole recreation area can be reached from Paynes Meadow itself but will also be safely accessible from outside by a pedestrian entrance via the Chalklands spur road from which there is further access from Rivey Lane. It means reasonably safe access for everyone living from Tower View west to the north side of Back Road.

It has been the positive relationship between all concerned that has meant there are one or two fewer units for Hundred Houses to profit from and a concession by the district council to enable the local community to get something it badly needed.

Finally we all hope most people will approve of the site's general layout and appearance. Let's hope this co-operative approach will set a precedent for all future developments!
Joan Smith

Council tax capping: the consequences

IN July, the Deputy Prime Minister's office announced that it would cap council tax in eight districts including South Cambridgeshire which means that South Cambs district council will not be allowed to raise money through tax beyond a certain level, and will have to cut its budget by a staggering 20%.

The full effects of capping will not be felt until next year when the budget is revised. The painful and painstaking process of identifying cuts is now taking place. Inevitably this will mean staff redundancies and a reduction in services.

The government says that the council's obligations are only to deliver the statutory requirements; planning, housing, refuse collection and environmental health.

Currently the council undertakes a whole range of non-statutory services in the realm of community development delivering all sorts of grant aid and support to our villages. We will do what we can to keep these intact, even if greatly slimmed down.

While the capping decree is not reversible, we are pressing government for a substantial increase to our revenue support grant.

The September issue of *South Cambs Magazine* explains the situation in more detail, and there is further information on the council's website at www.scambs.gov.uk

For more information please contact:

John Batchelor 892111

The full article on capping is on the Linton News website.

LINTON DIARY

To guarantee entry into this diary please ensure that your event is written into the diary in the Post Office.

Details of items in bold type may be found elsewhere in this edition.

You may also send an email with your event details to diary@linton.info, or use the form on www.linton.info

Weekly Events

Whist Drive, 7.30pm, Mondays	Village Hall
Men's Keep Fit Club, 8pm, Mondays	LVC
Story Time, 2.15pm-2.45pm, Tuesdays	Library
Linton Chess Club, 7.30pm, Tuesdays	Village Hall
WEA, 10am, Tuesdays	Village Hall
IT Club, 7pm, Tuesdays	Cathodeon Centre
Linton Radio Race Car Club, 6pm-10pm, Wednesdays	VH
Tots in Tow, 10am-11.30am, Wednesdays in term time	VH
Rock Café, 1.30pm-3pm, Wednesdays in term time	VH
Little Acorns, 10am-11.30am, Thursdays	VH
Carpet Bowls, 7.30pm, Thursdays	VH
Bridge Club, 7pm, Fridays	Cathodeon Centre
Ladies' netball, 7pm-8.30pm, Mondays	Sports Centre
Weight Watchers, 7pm, Wednesdays	Cathodeon Centre
Tap dancing, 7.15-8pm, Fridays	Village Hall

OCTOBER

1 Farmers Market, 10am	Linton Village College
4 WI, 7.30pm,	Village Hall
5 Linton Book Club, 8pm	Dog & Duck
5 Bookfest meeting, 8pm	Village Hall
6 Luncheon Club, 12.15pm,	The Crown
6 Parish Council meeting, 8pm	Cathodeon Centre
8 Papworth Hospital Charity Dance, 7.30pm	Linton Heights
8 Linton Music Society, 8pm	LVC
9 WWW, 10am	Pocket Park
11 VIP, 2pm	Chalklands Community Centre
11 Gardening Club AGM, 7.30pm	Village Hall
15 Ashdon Crafts' fair, 10am-5pm	Village Hall Ashdon
15 Camera Club exhibition, 10am-4.30pm	Village Hall
15 Now What? Complementary health workshop, 10.30am-4.30pm	2b Bartlow Road

15 WWII exhibition, 11am-1pm	Library
15 Sale of hand knitted goods, 11am-3pm	130 High Street
15 Wednesday Brownies' jumble sale 2pm,	Infants' School
15 Friends of Linton Heights quiz & chips, 4pm,	Linton Heights
15 Friend's of St Mary's Quiz, 7 for 7.30pm	Infants' School
18 Historical society, 7.30pm	Village Hall
19 Granta Grapevine (talking newspaper) AGM, 2pm	Chalklands Community Centre
19 Fitness suite opening, 5.30pm	Sports Centre, LVC
19 CAMTAD hearing help, 9am-12noon	Health Centre
20 Parish Council meeting, 8pm	Cathodeon Centre
21 ACE lunch, 12noon for 12.30pm	Village Hall
25 Linton Granta Bowls Club AGM, 7.30pm	The Pavilion
29 Book sale, 10am-3.30pm	St John's Hall, Hills Road

NOVEMBER

1 WI, 7.30pm	Village Hall
3 Luncheon Club, 12.15pm	The Crown
3 Parish Council meeting, 8pm	Cathodeon Centre
5 Farmers' Market, 10am	Linton Village College
6 All Souls Service, 6pm	St Mary's
8 VIP, 2pm	Chalklands Community Centre
8 Gardening club, 7.30pm	Village Hall

Refuse collection: 3rd, 17th & 31st October

Recycling collection: 10th & 24th October

Library times: **Monday** Closed; **Tuesday** 10.30am-1pm, 2pm-5pm; **Wednesday** 2pm-5pm, 6pm-8pm; **Thursday** Closed; **Friday** 10.30am-1pm, 2pm-5pm, 6pm-8pm; **Saturday** 10am-12noon.
The Linton News can also be read online at www.linton.info
Extra copies may be obtained from BP garage on the by-pass.

LOST

ONE of our team has lost an earring whilst on Linton News business, it is a silver earring with a blue dolphin body. If found please could you contact the editor so she can return it to its owner.

LN Editor, contact details page 8

Official: Linton will keep its one-way system

LINTON'S one-way system is here to stay.

Earlier this month, the parish council agreed that the trial this summer had been a success (the vast majority of people who answered the questionnaire voted in favour of keeping the arrangement).

On 12th September, the South Cambs district council also voted to make both the High Street and the Back Road one-way systems permanent.

The parking build-outs will also be made permanent as will speed humps in Back Road.

Any comments regarding the new set-up are welcomed by the district council but it does not expect to alter its plans other than by minor 'tweaking' of the detail.

If anyone does have any observation to make, the simplest way will be via Linton parish council.

Work on the changes is expected to start by next January and be finished well before the end of March.

Letters: P3
Parish council: P9-10
LNT

Printed by E & E Plumridge Ltd.

Too good for jumble

BUT would make an excellent Christmas or birthday present.

The Linton News Team is pleased to invite offers over £10 for a set of 26 National Geographic Wildlife Videos.

All the profits will be given to a village charity - or good cause.

Please call:

Kate France 891602
or e-mail katefrance@linton48.freereserve.co.uk

FROM WHERE I'M SITTING

by TONY SMITH

A STRANGE tapping noise came from the building site, which was unusual for a Sunday morning. It continued for a couple of minutes before a splashing sound replaced the tapping. Curiosity aroused and the complete incomprehension that I enjoy so much these days, made me investigate with an air of cautiousness. I needn't have worried, as next to number 14 where Lyn lives the builders have installed a grey mobile toilet, and having a bath in the rain on the roof of this was a magpie, enjoying every minute. The original site for the Port-a-loo was to have been next to my bungalow, but as it would have been next to our toilet, the site manager was worried about the smell. I reassured them that the builders would get used to it, given time.

My Citroen Berlingo, affectionately named Bertie, is the best car I have ever owned, but there again I say that every time. It can carry my scooter and a passenger in the back at the same time, and whilst not the fastest vehicle around, it reflects my personality completely as it is slow, ugly and very economical; Sue would say tight. When we chose the colour, we had never seen a light blue one on the road, so imagine my surprise when there are now seemingly hundreds about. I wave to them all and get funny looks in return, but I think every lucky person who has one is part of an exclusive Bertie Owners Club, and deserves recognition and a friendly wave. Actually driving one along the A1307 shows what a unique experience owning one can be as Berties seem to be invisible to some other drivers, and although I have checked the back window many times, I cannot see a sticker anywhere that says that my car must be overtaken at very high speed at all times and at all cost.

One Sunday morning before nine, I was overtaken on the turn to Horseheath by someone going at least 90 mph. Apart from the emergency services, please tell me who needs to go that fast anywhere at that time of the morning? On the same part of the road, a lorry pulled out in front of me then turned into the layby further up the road. Whilst road rage was not part of my driving test, I am beginning to understand why some people react the way they do; it all seems so futile and pointless. All this is a prelude to another of my absurd statements that some people think, but only I am stupid enough to put into writing.

There are few dangerous roads. There, I've said it. To say it is the road's fault that people race side by side at over 80 mph, feel compelled to do a hundred along the dual carriageway overtaking those who drive within the speed limits, think road markings are advisory, get upset if someone dares to get in their way, then crash because it has been proclaimed a "Dangerous Road" is rubbish in my opinion. For Goodness, sake, I was even overtaken by someone doing at least 50 mph along Back Road. Does this make it a dangerous road? I hope the bottom falls out of his car, the engine seizes up and the piston knocks some sense into him. Perhaps I need some calming measures installed.

As usual, I have come up with a solution. Govern all cars so that they can only do 70 mph. Usually people travel faster because they are late, but if everyone drives sensibly and leaves enough time for their journeys these situations shouldn't arise. While we're on the subject, everyone who has a four by four and never goes out in the snow or off-road should not be allowed to own one, and everyone who drives less than a mile simply because it is raining should be banned as well. Along with the mandatory fitting of silencers to car radios, that should take care of most of it.

I remember reading in the Sun newspaper, so it must have been true; we were to have a heatwave this summer. I disagreed, and was called a misery. To add to the gloom, with Christmas looming after a stormy and wet autumn, I think that the Gulf Stream is losing some of the protective qualities this country has had for many years. This will leave us open and vulnerable to weather systems coming across the Atlantic Ocean. Wear your galoshes, and watch out for the wind; I know I have to.

Please take care of yourselves and one another, and I'll see you all next month.

Tonys views are not necessarily those of te Linton News.

Indoors for a while

THE new Gardening Club year opens with the AGM on Tuesday 11th October followed by some members' slides and a produce sale.

During the season the programme will cover a wide range of subjects: the importance of national parks by Simon Odell, facts and folklore by our chairman Charles Attwood, plant hunting in Chile by Sylvia Norton whom some of you will remember as a former member, Chelsea flower shows since 1947 by Brian Waygood, garden transformations by member Paul Orton, historic garden plants by Timothy Clark whom some of us met last May at his home in Soham and of course the usual convivial Christmas social evening.

We look forward to seeing current members, new members and visitors at 7.30pm in the village hall and would be grateful for any contributions for the produce stall.

Gloria Fidler
891800

Highlights of the Granta Grapevine year

LINTON'S talking newspaper, Granta Grapevine is presenting highlights of the year's magazine recordings at its annual general meeting at 2pm on Wednesday 19th October at Chalklands Community Centre. Our listeners and everyone with an interest in the group is warmly invited to come along, meet with us and hear some of the more memorable parts of the year's productions.

We still have a need for help both on the technical side, operating our recording equipment, with production of written and recorded material and with committee work. We could be a stepping stone for those wishing to work with the media, or you may already have experience in one of these areas. Either way we would be pleased to see you. Refreshments will be served.

Any members with transport difficulties please contact Clare Neville on 893251 or myself: Mike Crofts 893619

ACEs enjoy a sunny day in Ely

UNUSUALLY for an ACEs event, we had a wonderfully sunny day for our coach trip to Ely on 6th September.

This was ideal weather for exploring the historic city. The cathedral drew some of us, with its maze, lantern and the new statue of S' Ethelreda - more inspired by a certain lady gardener than an Anglo-Saxon vision of holiness?

However, more were inclined to explore the architecture, gardens and attractive setting of the town, then to seek refreshment in the tea-rooms and the hostelrys along the riverfront. Many of us enjoyed shopping and discovered just how thrifty we all were!

Due to the one-way system, we could not pick up at the village hall - the road is too narrow for a bus to pass the parked coach. So, in future we will pick up near the bridge and at Back Road and anywhere else? Let us know where is best for you,



A few of the ACEs enjoying the sunshine in Ely

Picture by Enid Bald

and watch out for details on the posters.

The next event will be a lunch at the Village Hall, 12 for 12.30 start, on Friday 21st October. Garth Collard, our favourite local historian, will be speaking on "How well do you know Linton?"

Then there will be the SCDC concert for the 60+, "Celebrating the Classics" on

10th November. We have 40 tickets (remember the Coldstream Guards last year?) and we are running a coach - come with us rather than have the problems of taking the car! This is free, as are the tickets, so book soon.

Contact Sue or Dawn on 891001 to book these events.
Enid Bald
891069

Back to work in Chennai

SORRY for the delay in mailing, but in my defence I have been insanelly busy, and with distractions like football, the Ashes and a new nursery teacher it's hard to find any kind of free time!

I also had to travel to Sri Lanka a week after being back in India to sort out my visa for the second six months of my trip. It seemed like a nice place, but as I was only there for four days and confined to Colombo I didn't get to see much of it. One big plus point was the local McDonald's, I ate there nearly every day. On my return to Chennai I saw on the news that McDonald's world sales had risen by 4%, for which I think I can take some credit.

I settled back in to life at Chennai immediately and this has definitely become my second home. When I first returned I was treated like a long lost friend and they have already started trying to persuade me to stay for another year. It's a really nice feeling to be so valued and wanted. Tyrone, the head matron's husband and my painting contractor, has had satellite TV installed just so I can watch the football. That is typical of most of the people I have met who can't do enough to make me feel comfortable.

The works have really taken off and I find myself juggling projects as well as being hands-

on when required. It's good like that because it has made the time fly by and I know I'll be home before I realise it.

The rainy season is nudging its way in and we have had a few really heavy down-pours and some breathtaking thunderstorms, but I've been assured the proper stuff's yet to arrive. Mostly it's still very hot, though, and with the frequent showers it has become a major mozzie fest which has been less than comfortable at times.

I've found a nice lookout point at the top of a really tall water tower. It's a cool place to go as there is a pleasant breeze up there and not so many mosquitoes. The only bad part is getting up and down, as the old metal ladder has seen better days. But it's worth the risk as I can see for miles in all directions around the city; lightning storms in the background as well as the numerous firework displays which seem to take place on a nightly basis.

My room is much the same, apart from the addition of a fridge which is worth its weight in gold. Rabies the mouse is still rooming with me and, as I'm sure you can imagine, it was an emotional reunion.

Gary Dixon

THE KELVIN SCHOOL OF MOTORING
★ DOE, ADI and MIAM
16 BACK ROAD, LINTON
Cambridge 892263

P T Carpentry & Building Services
where quality is affordable
Loft conversions, renovations, extensions, kitchens, bathrooms, and all aspects of carpentry
Paul Turner
23 Rivey Way, Linton
Tel 01223 892174
Mob 07939 568767

BORDERS GARDEN SERVICES
For all your gardening needs
Free quotes and advice available
Andy Smith on 01223 262469 or 07779 019488
or Ben Mercer 07890 645692

Dissolve your PAYROLL HEADACHES with PSC...
PAYROLL SOLUTIONS
We're payroll specialists, since 1973, both large and small companies have entrusted all or part of their payrolls to us, you can cut costs while fulfilling, even enhancing, a vital internal function. A second to none payroll service, call us now.
• Cost effective relief
• Remedy with a 'personal' approach
• Tried and tested for over 30 years
• Simple to use, no side effects
The Payroll Service Company Ltd.
5 The Technopark, Newmarket Road, Cambridge, CB5 8PB
Tel: (01223) 506366 | Fax: 01223 506367
Email: enquiries@psepayroll.com | www.psepayroll.com

MALLYON & DONALDSON
Linton
Specialising in both Modern and Traditional building methods.
Tel: 01223 891267
Mob: 07941 220868
All contracts finished to a high standard. Reliable service. Local references available.

Linton Beauty Clinic
113 High Street, Linton Tel: 01223 890303
New Treatments Now Available
Air Brushing
Nail Art
Acrylic & Gel Nails
New Hours:
Mon-Thurs 9am to 8pm, Fri-Sat 9am to 5pm
New Dermatological Trained Beauticians

FREE COMPETITIVE ESTIMATES
Watkins Joinery
• FITTED KITCHENS / BEDROOMS / WARDROBES
• CABINET MAKERS
• BESPOKE JOINERY
• DOORS / WINDOWS / STAIRS
• WOODEN FLOORING
• CONSERVATORIES
• EXTENSIONS / REFURBISHMENTS
• ALL WORK GUARANTEED
20 YEARS EXPERIENCE
INSURANCE WORK
UNDERTAKEN
Tel: 01223 890600 Mobile: 07802 885390
www.watkinsjoinery.freeserve.co.uk

Readers write

Post and email addresses and deadline for letters on page 8

Please note: All letters for publication must be supplied with a full name and address to enable us to check their authenticity.

One-way: points to be noted

Dear Editor,

Now that the dust has settled on the one-way trial and further to the parish council decision to vote in favour of the trial being made permanent, I wanted to make the following points:

1. We need to be careful in using bald statistics. The questionnaire required me to make a selection between one- or two-way on Back Road if the trial were adopted permanently. As Back Road was a logistical disaster during the two-way phase of the trial, I stated a preference for one-way but only if the trial was adopted. Elsewhere in the questionnaire, I voted against one-way. Is this rather qualified vote included in the supposed 82% support for Back Road to be one-way?

2. It is indisputable that life has altered for the worse for those of us who live on the one-way section of Back Road. There has been a significant increase in traffic and traffic speed (confirmed by the council's own statistics, and an increase in noise and pollution. We are likely to get speed bumps permanently and buses and lorries regularly mount the kerb to get past parked vehicles.

3. One-way on the High Street is only a partial success.

Whilst it is clear that congestion is greatly improved, traffic speeds have increased (again, according to the council's own statistics). I am surprised that High Street residents are happy to make this compromise given that improved safety was one of the objectives of the one-way system.

4. Permanent adoption of the one-way trial was inevitable – those of us impacted have to accept this and get on with life. However, I have been dismayed by the manner with which opponents of the scheme have been dealt with in certain quarters in the village. With such an emotive issue, it was obvious that people would feel strongly and that not everyone's preference would prevail. I do not, however, expect to be accused of being "selfish" for exercising my democratic right to object to a council proposal.

I would like to thank Val Urwin of the Traffic Steering Group and Alistair Frost and Daniel Watts of the Capital Programme Team at South Cambridgeshire council for ensuring residents of Back Road were involved in the decision-making process and for the efforts they made to communicate with us.

Julie Platten, 5 Back Road 890063

Dog & Duck will NOT be open all hours

Dear Editor, villagers and friends,

For the last 30 days we have complied with the new Licensing Law (which comes into effect 24th November 2005) by displaying our extension of hours on both our doors of the Dog & Duck.

It has been brought to our attention that there is a certain misunderstanding to our application, and this has led to many people believing that we will be playing loud music and serving alcohol through all hours of the night! Let us please allay all fears by informing everyone that we have no

intention whatsoever of opening any later or longer than we have done since we bought this business in March 2001.

Licensing law is now in the hands of South Cambridgeshire district council, whereas we had to apply to the magistrates court for any extension of hours, ie Christmas Eve, New Year's Eve etc. From 24th November 2005, this facility will be withdrawn and, in consequence, a 'temporary licence' cannot be granted. In the past we have applied each year for temporary licences to cover Bank Holidays, and Christmas.

In conclusion, we have to apply for every conceivable extension now.

... We might host a wedding next year and we might have a band playing and we might need a bar

extension until midnight or beyond. They might want a champagne breakfast and dancing until midnight (the list of 'possibles' is endless); if we do not request the (possible) extension of hours this year for a (possible) event next year, we will never be able to hold any event of any kind that might go on after our current trading hours.

We hope that those who know our business, and more importantly us, are confident enough to know that we would not operate our business in any other way than responsibly. We run a lawful, good quality, no nonsense establishment. We work hard at providing our community with a seriously good quality pub and restaurant – even opening every morning for coffee and

cakes – what other pub would provide that to its villagers?

Please, please don't assume – come in and ask us if you don't understand the new laws. Albeit complex, we now have some knowledge of them. Tracy & Bob The Dog & Duck

OUR THANKS

Dear Editor,
Can you say a big thank-you to everyone who turned up to have their cars washed despite the bad weather on Saturday 10th September. We would also like to thank the Linton Co-op who donated the refreshments. We raised £168 for the fire service benevolent fund.

Mark Collins

Fitness ... and then food!



A feast to make you forget the diet Picture by Bel Griffiths

A FINE warm evening saw 34 members arrive for our annual Harvest Supper bearing savoury dishes to share, while the committee came laden with delicious deserts.

Business was brief and pretty birthday posies distributed, then we found we had a gentleman among us!

Marc Wilson from LVC Fitness Suite had kindly come to tell us what is available there and the enormous benefits exercise of any description can have on our health.

Sadly our diets were

forgotten when it came to the supper and full justice was done to the magnificent spread. A stand of "bring and buy" jewellery and cosmetics was held for WI funds.

As 2005 is the 90th anniversary of the founding of the WI movement, Eileen Impy made a beautiful iced fruit cake to commemorate this momentous occasion.

Our next meeting will be on 4th October when the speaker will be M^{rs} Latter who will talk on the delights of canals and canalling.

Clare Neville

A lesson in line dancing

IF YOU had looked through the window of the Hildersham village hall in August, you may be forgiven for thinking we had made a mistake and got the wrong evening and were having to share with the line dancing class.

No, we did not get it wrong, WI members were being entertained with a demonstration of intricate sequences, involving some very nimble and impressive footwork. For the last dance, we were invited to have

a go. Albeit a much easier dance, we found it great fun but not as easy as our guests made it look.

Five members celebrated birthdays in August, three on the same day. The evening finished with wine and some delicious nibbles.

For our next meeting on 17th October, our speaker M^{rs} Caroline Middleton will be presenting a talk entitled Send A Cow. Visitors are very welcome.

Pamela Parrish

BED and BREAKFAST
ANN & GEORGE PEAKE
Linton Heights
36 Wheatsheaf Way, Linton
Tel: (01223) 892516
Comfortable & friendly

your local florist

Flowers

SARAH CHAMBERLAIN

delivering worldwide

61a High Street, Linton
891740

'EAGLE-LEGAL'
LEGAL CONSULTANCY
HELP & SUPPORT

Property Matters
Probate/Wills
Matrimonial Problems
Legal Assistance

Debt Collection
Contract Dispute
Low Fees

Sound Advice, Home Appointments
For free quotation, no obligation:
Tel: 01799 520613
Mobile: 07811 897752
Website: www.eagle-legal.co.uk

L.B. CABS
LINTON

For all your long and short taxi trips

Airports
Courier Service available

PHONE LINTON
01223 892986

PAULINE'S
CHILDCARE IN
LINTON
FOR UNDER FIVES

Ofsted registered
Monday – Friday
Ring for details
01223 891890

travel counsellors

Gillian Barrow
Personal Travel Counsellor

Tel: 0845 058 7892
Mobile: 07957 632707

Web:
www.travelcounsellors.com
/gillian.barrow

Email:
gillian.barrow@travelcounsellors.com

Tereza Votre
Jewellery
Linton

A collection of handmade jewellery & beadwork with precious and semi-precious stones is available for viewing by appointment

Tel: 07979 594488
Email: terezavb@terezavotre.co.uk
www.terezavotre.co.uk

Love your garden?

Bannold

Bannold, Bannold Road, Waterbeach, Cambridge CB5 9RB
T: 01223 860671 F: 01223 565431
Brochure freephone line 0500 012231
www.bannold.co.uk
Specialists in natural hard landscaping materials

McKenzie & Haywards
MHG

Garage
MOT by appointment while you wait.
Servicing,
Collection & Delivery Service
McKenzie & Haywards
Garage
Units 3/4 Lintech Court
The Grip Industrial Estate
Linton, Cambridge, CB1 6XN
Tel: 01223 894140
Fax: 01223 890035
E-mail: murray@mckenzie-haywards.freereserve.co.uk

East Anglia's leading independent Travel Agent

- Package Holidays
- Flights
- Cruises
- Tailor Made Holidays
- Business Travel
- Car Hire
- Travel Insurance
- Foreign Currency
- Airport Parking, Hotels, Transfers & Lounges
- Hotel & Theatre Bookings
- Ferries

1 The Arches Saffron Walden Essex, CB10 1ED Tel: 01799 505000
Jubilee Walk Haverhill Suffolk, CB9 8DA Tel: 01440 762661

Premier
Travel Agency
www.premiertravelagency.co.uk

the NAME for property in the AREA is:

Kevin Henry
estate agents

tel: 01799 **513632**
www.kevinhenry.co.uk

Kevin Henry in association with other independent Estate Agents offers the BEST coverage in the AREA

Can you put names to the faces of people in these pictures?



Was the man on the right, thought to be Mr Young, a teacher, a football coach or both at the primary school? Was the picture of the football team taken to celebrate a special win?
Pictures from Kate Monday



Although junior school age in the early 1950s, the children in Mrs Fraser's class went to the primary school (now the infants' school,) before Linton Heights was built in 1972.
If you can put a name to any of the faces please let Garth Collard know on 892395

Remembering our loved ones

All Saints' day falls on 2nd November and the commemorative service will be held on the following Sunday, 6th November. We will gather at St Mary's Church at 6pm to remember and give thanks for the lives of our loved ones who have died. Everyone is warmly invited.

It will be an opportunity to remember, pray and sing together. Candles of remembrance will be lit during the service, and you will be invited to come to the altar to receive communion or for a blessing.

During our prayers the names of those who have died in Linton in the past year will be read out. Please feel free to contact Lesley Gore beforehand (details below) if you would like her to add the name of someone who died at an earlier time or in another place.

There will be time to talk after the service when refreshments will be served.

Lesley Gore 891970

38 Symonds Lane, Linton, CB1 6HY

DRAMAWISE

DRAMAWISE students have done exceptionally well this year winning many cups and trophies at festivals, performing in various venues including street theatre and the final performance of the year at the Edinburgh Fringe Festival.

I took twenty students aged from 15 to 18 by coach to perform at the prestigious Fringe. We all had the most fabulous time. We stayed in university flats and then performed our play *Zigger Zagger* every day. When not performing the students saw other performances, sometimes up to six a day, stand-up comedy, musicals, revues and plays, all agreed they had learnt a great deal, while enjoying themselves.

One of our Linton students, Kirsty Wright played mother in our production and was terrific. She won the top acting award at the Cambridge Festival and was runner-up at other festivals. Another Linton pupil Hannah Burns played Aunt Edna and had the audiences laughing all the time; Hannah is great at comedy.

Dramawise for six to 18 year olds, takes place from 4.15pm-7.15pm on Fridays at St Mary's Church Hall, Sawston. It is a great way for your child to gain confidence. If you would like to know more please contact me:

Frances Brownlie

632288

ALL TILING WORK UNDERTAKEN

CONTRACTS

TERRACOTTA, CERAMIC, MARBLE, QUARRY TILES

NO JOB TOO SMALL ESTIMATES FREE

Tel: 01223 891372

ESTABLISHED 1970

INVESTORS PLANNING ASSOCIATES LIMITED

ROGER HICKFORD

Independent Investment & Mortgage Adviser

East Anglia Office Associate & Authorised Independent Financial Adviser:
Roger Hickford M.L.I.A. (dip.) Cmap.

1 D Limberhurst Court, Haverhill Road, Horseheath, Cambridge. CB1 6RG
Tel: 01440 713533/713544 Fax: 01440 713544 Email: roger@ipa-cambridge.co.uk

Investments **Business Insurance/Protection**
Inheritance Tax Planning **Commercial Loans/Mortgages**
Mortgages **Savings**
Pensions **Equity Release**

All Aspects of Financial Services
Totally Independent - Experienced - Local
Call - with no obligation (01440) 713533/4

Helpers Ahoy for the 3 Ws

DO you know what 3Ws stands for? It could be 'Wonderful Wicked Women' or 'Weak and Weary Workers' but actually it is the nickname acquired by the Linton Woodland Water and Wildlife Group. We meet regularly throughout the year and last February we organised a spring-cleaning session in the Pocket Park and villagers of all ages came to help; pensioners to toddlers all rallied round and everyone had a good time helping to improve the wildlife habitats of the area.

We shall be meeting again at 10am on Sunday 9th October at the entrance to the Pocket Park and hope to see our old friends and meet some new helpers - never has the saying 'Many hands make light work' had a greater significance! If you enjoy walking in Leadwell Meadows (the alternative name), do think about contributing a couple of hours to maintain a pleasant area and help to ensure it doesn't revert to an obstacle course. Just turn up in old clothes, boots, thorn-proof gloves and bring clippers and a rake if you have them. The more the merrier, see you there.

Judy Rossiter 891383

Chronicles of Linton's past

DID you know that there had been a bank raid in Linton? This and other stories and interesting snippets of information emerged when Garth Collard had a meeting with some older members of the community.

The idea of collecting these memoirs had been put forward by members of the Historical society and furthered by Judy Rossiter who hosted a morning of recollections. It was a two-way affair of course, with Garth revealing the history of some houses and businesses in Linton, but the special guests filled in details of people, places and relationships of which he was unaware. There was also an exchange of photographs to pore over which resulted in the discovery of some fresh identities.

That particular discussion centred on Horn Lane and the area of the High Street adjacent to it, where there had been a butcher's shop on the site of the later Barclays bank, and "old Mother Twitchett" had a sweetshop before the war in part of the former Red Lion pub on the southern side of the junction (No 28).

And the bank raid? Well, this occurred in 1990 when two robbers who had escaped from Haverhill jail got away with only £40, but were never caught. The heroine of the story, who had been tied up for four-and-a-half hours in the cellar fortunately survived to tell the tale and, hopefully, many others.

If you would be interested in getting together with Garth to tell him a yarn he might not know, please contact him on 892395. He is interested in Linton life generally, in the schools and shops, particularly information from women who are considered to be the more observant! Everyone's story is important; of special appeal are home-front war time happenings and any box camera photos.

Come on, don't be shy. Please don't let your personal history go unrecorded.

LNT

NEW DRAMA GROUP FOR LINTON!

ARE you interested in...

- Directing
- Acting
- Writing
- Backstage
- Wardrobe
- Publicity and Marketing
- Front of House Management...

then we would like to hear from you!

All are welcome regardless of experience; all you need is enthusiasm and a love of theatre! For more information contact:

Dan Schumann
712825 or e-mail
dschumann@sawstonvc.org

The place to sell your books

THE Cambridgeshire Local History Society, is holding an abook sale at St John's Hall, Hills Road, Cambridge, from 10am-3.30pm on Saturday 29th October.

This is for authors who still have copies of past books to sell or societies that have a surplus back stock. A pre-Christmas sale should greatly increase your selling potential.

For more information, call:
Andrew Westwood-Bate
892430

Chippy's
Traditional Fish & Chips

Now in Linton every **Thursday**
We look forward to seeing you out side of

Linton Junior School
Wheatshaf Way 5 - 8pm

Fresh fish daily Cod, Rock Eel, Skate, Haddock & Plaice

Scampi,	Pukka Pies, Chicken &	Burgers
BBQ Chicken,	Mushroom, Steak &	Mushy Peas,
Chicken Nuggets	Kidney, Minced Beef	Curry Sauce

Stevens

solicitors

Quality Advice From Experienced Lawyers

25 High Street, Haverhill, Suffolk CB9 8AD
Tel: (01440) 762511 Fax: (01440) 703873
also at Thorn House, 11 Hill Street, Saffron Walden, Essex CB10 1EH
Tel: 01799 526849 Fax: 01899 524799

Problems with your health? Stressed? Feeling run down?

Reflexology

Back conditions, Migraine Sinus, Asthma, Allergies, Stress and Tension, Bronchitis, Digestive problems, IBS, Constipation, Kidney and Bladder problems, Depression, High blood pressure, Lethargy, Circulation problems, M.E., Menopausal problems, Run down feeling

This is not a full list - just a brief guide

Reflexology is the answer for many women and may help you. It will relax and rebalance your body.

Women

June Keeble
M.BSR. BC.MA.
NFSH Healer
offers you a caring, professional service

Appointments, inquiries
894948 (Linton)

DRIVES & PATIOS

HOUSE EXTENSIONS

HOME IMPROVEMENTS PAINTING DECORATING

A & T Groundworks Ltd

FRIENDLY SERVICE LARGE & MINI DIGGERS FOR HIRE
Call Ashley on 01799-520298 - Mobile 07803745637

Co-Workers of Mother Teresa

OVER the past year we have sent 17 sacks of knitted goods and clothing to the Missionary Sisters in India. However, the Indian government is no longer allowing imports of this kind so we have found another outlet for our work. *Feed the Children*, a small charity which exports to African countries where the need is greatest, is able to accept blankets and knitted garments for children under four years, but no adult clothing.

We would be grateful for gifts of wool, knitted garments and clean clothing for babies and young children. There will be a small display of our work in S^t Mary's Church on Sunday, 9th October. We meet on the fourth Thursday of the month (next meeting 27th October) at URC, Horn Lane, Linton, from 10am to 12noon. For more information please contact: Maureen Harper 891696

Lemur breeding centre at Linton zoo

LINTON is involved in breeding programmes for seven rare lemur species including the white-collared, listed as one of the 25 rarest primate species in the world and one of the four rarest lemurs. This special project is now reaching completion.



White-collared lemur mum with twins
Can you spot the babies? They are clinging to mum

The main lemur accommodation is considered one of the best in Europe. Each lemur group has its own spacious, heated indoor area with attached outside enclosure. The lemurs can access a landscaped and planted paddock which is also designed as a visitor walk-through experience. Special days for visitors who would like to get really close to the lemurs are planned.

Rod and Ruby our red ruffed lemurs were the first released into the outdoor paddock. They enjoyed exploring their new space and returned to their own bedroom and enclosure area later that day. The pair of Sclaters lemurs tend not to venture very far from the safety of their own accommodation but the naughty red-bellied lemur family were described by the keepers as behaving like a bunch of out of

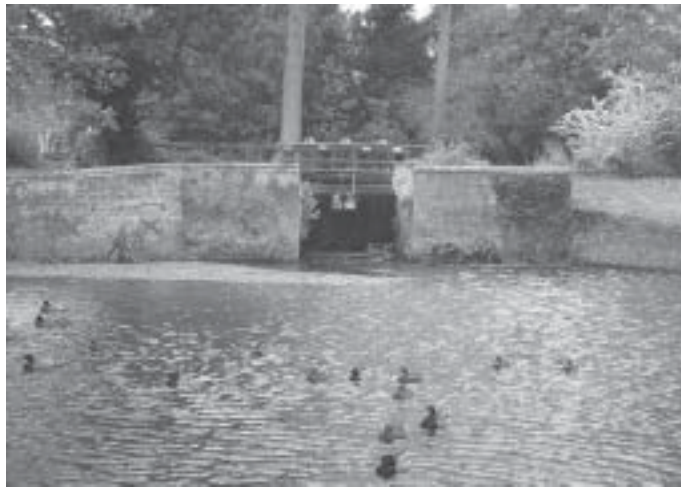
control, drunken teenagers leaving a night club in the early hours of the morning!

The white-collared lemur family will be the next to be introduced to the paddock. The twins born earlier this year are a boy and a girl and are now about half grown. These two babies are exciting and important contributions to the critically low number of this very beautiful species.

As part of our commitment to environmental education we have a programme of keeper talks and activities at the weekends and during the school holidays. Starting this autumn half-term holiday, visitors will be able to find out much more about lemurs at the keeper talk and lemur feed at 11.30am. Check the website www.lintonzoo.com for more details.

Kim Simmons

Pictures past and present



The ford in Mill Lane

Picture by Tracey Wilson

LINTON camera club is holding a photographic exhibition with a difference between 11.30am and 4.30pm on Saturday 15th October in the Village Hall.

The exhibition will include photographs by members of the club and pictures of historic Linton, 'Faces from the Past', from Garth Collard's collection.

An interesting event of the day will be a demonstration featuring all stages of digital photography from 'a-camera-in-a-box' to a colour print in your hand, correcting typical image problems on the way. If you are thinking of buying a new camera or have just joined the digital revolution, this will be your opportunity to see what's involved and get friendly help and advice. Do bring your camera along.

There will be a display of old film cameras, refreshments including home-made cakes, and a raffle in aid of CAMART, a local support group in the Cambridge area for the Alzheimer's Research Trust.

For more information about Linton camera club visit the club's website at www.lintoncameraclub.org.uk or contact Roger Lapwood on 891104 or Ron Pitkin on 891845. Entry to the exhibition is free.

Mike Crofts 893619

Are you ready for life?

MANI Busch is a new therapist at Linton Complementary health centre in Bartlow Road. Mani is a fully trained coach and arts' therapist and is a member of the international coach federation.

This time of year generally things get back to a rhythm and normal routine after the holidays. With children back at school adults have more time; and questions can arise about the direction life is taking.

A new, effective way of approaching the desire for change is life coaching. It is a great method for increasing energy, motivation and enthusiasm for personal change. If you are wondering how best to be effective and what your life purpose might be I have been trained to offer a 90 day

programme called "Now What?" It is a process which has been used with hundreds of clients and may provide you with the focus and enthusiasm to make important life choices.

Life coaching is practical, confidential and one to one, either by phone or in person. It is amazing what can begin to happen when you have someone to help you 'hear yourself think'.

A workshop to introduce the Now What? process is from 10.30am to 4.30pm on Saturday 15th October at Linton complementary health centre.

Mani also offers aromatherapy massages.

To find out more please contact:

Mani 01799 584123 or 01799 584727

Generosity reaps rewards

THE annual prize draw of the 2004/05 K-Club year was made on Thursday 15th September at a meeting of the Linton Parish Council.

The third prize of £75 was won by D^r Barbara Silverman with No. 011, and winner of the second prize of £250 was Peter Latimer with No. 372.

Amazingly the first prize of £600 was taken by last year's winner, Lucy McKenzie. This year's winning number of 254 was one of four additional memberships which Lucy took out to "put something back into the club" from last year's windfall. Her generosity has been well-rewarded, and unselfishly she has decided to repeat what seems to be a winning formula.

Over the last seven years the K-Club has raised more than £12,000 for LA4Y, to help fund youth-related activities in and around the Linton area.

For further information please contact:

Peter Dixon 890220

K-club September winners

THE winners of the September K-Club monthly draw were:

1st prize (£50)

M^{rs} H Lunan (No.352)

2nd prize (£25)

M^{iss} K Clackson (No.157)

3rd prize (£10)

M^{rs} S King (No. 084)

POT POURRI (10)

Whose round? Solving the Two Unknowns

IT was my turn to buy the drinks. There were 12 (separate) pints of bitter and lager. The lager costs 60p more than the bitter, and if there were more lagers than bitter, how many pints of each kind did I buy if the total amount came to £26.40?

Solution to No.9 Su Doku - Thinking on empty calories

IN the year 1514 the German painter and engraver Albrecht Dürer made his famous engraving, 'Melencolia'.

Since classical times Melencolia was considered a depressed mental state removing any enthusiasm for one's work. The cure was believed by astrologers to be helped by that of a magic square, in particular the Jupiter square which appears in the upper right hand corner of Dürer's engraving. The square is magic because each row, column and diagonal add up to the same number, which is 34.

16	3	2	13
5	10	11	8
9	6	7	12
4	15	14	1

NB. The year at the bottom is 1514 when the engraving was done.

Urania

A final victory for indoor bowls

AFTER narrowly missing out on winning the Indoor Carpet Bowls summer league to our very consistent and competitive rivals, Kirtling, on Wednesday 24th August at New Astley Club Newmarket,



The victorious team

Picture by Susan Ripsher

we played Kirtling in the Knockout Cup final and won 8-6. It was a very hard fought contest.

I would like to express a very big thank you to Linton carpet bowls club for all the effort that was put into the season. A much deserved success was achieved.

George Glover 892289

Linton & District Helping Hands

THE annual general meeting will be held at 2.30pm on Wednesday 9th November at 89 Bartlow Road, Linton. Everybody welcome. We are particularly looking for anyone with time to spare, either to join our team of drivers, or to be prepared to help in an administrative capacity. More details from:

Maureen Harper 891696 or Gillian Cotgrove 893735

BED & BREAKFAST
SPRINGFIELD HOUSE
14/16 Horn Lane, Linton
Regency house near Church, River views from bedrooms & guest lounge.
Tel 01223 891383

BED & BREAKFAST
Mrs Monica Clarkson
4 Harefield Rise, Linton
Tel: 01223 892988
Quiet modern bungalow
Families welcome
No Smoking

LCS Linton Computer Services
Tel 01223 893006
Mobile 07947 660810
Email sales@lintoncs.co.uk
Your Computer Problems Are Our Business

PC Sales & Repairs
Home Calls, Collection & Delivery
PC Servicing
Upgrade Services
Office & Home Networking
Data Recovery
Virus Help

Inkjet Cartridges Now In Stock!
Epson
Canon
Hewlett Packard
Lexmark

www.lintoncs.co.uk

Carpentry, Plumbing, Tiling
Door / Window Replacement
Kitchen / Bathroom Refitting

Fencing, Decking, Gardening
Painting, Decorating
Flat Pack Assembly

Property Maintenance
Steve Jackson
Service Engineer

All domestic appliance repairs,
15 years industry experience. Steve Jackson
Very reasonable rates. (Home) 01223 893114 / 893896
Quick & reliable service. (Mobile) 07963 854653

LINTON PAVING COMPANY

Block Paving & Gravel
Drives, Patios & Fencing
Gardening & Property
Maintenance Inc, Internal
& External Painting,
General Building Repairs
No Job Too Small
For a Local, Reliable and
a Friendly Service with
FREE Quotations
Tel: 01223 890060 or
07765 594398
lintonpaving@aol.com

JUSTIN PEARSON
Reliable, High Quality
Painter & Decorator
for Interiors & Exteriors
Free Estimates
Tel 01223 565310
Mobile 0775 2469130

IMPROVE YOUR SPANISH AT HOME
experienced teacher
lessons in your own home
free initial assessment/consultation
If you are interested in improving your Spanish, contact:
Susan Hodges (01223) 891521
or: sjmac2@yahoo.co.uk

LINTON VILLAGE MOTORS
01223 830550

BOURNE BRIDGE ABINGTON CAMBRIDGE
(nr COMFORT CAFE)

- ◆ Authorised MOT centre
- ◆ Free MOT retest
- ◆ ALL MAKES serviced and repaired
- ◆ Collection and Delivery Arranged
- ◆ FREE use of courtesy car
- ◆ Polite friendly staff
- ◆ FREE Advice
- ◆ Windscreens Fitted

A FULLY INSURED MOT APPROVED GARAGE
CAN YOUR MECHANIC SAY THAT??

Gas Care

Your local CORGI Gas installer - 25 Years Experience

For all your domestic Plumbing, Heating and Gas Appliance Installation and Maintenance Requirements

Telephone: 01223 893686
Mobile: 07973 262776
e-mail: info@gascare.gb.com
website: www.gascare.gb.com

A.J. COPELAND & CO.
Chartered Accountants, Linton

Audit, Accountancy, Tax and Consultancy Services
for Business and Individuals

Computerised Self Assessment Tax Return Service

For FREE initial consultation phone
01799 506602

Linton joins up to mark end of WWII

THE Linton Historical Society, the Linton Library team and the Linton WI are joining forces on Saturday 15th October to bring you an opportunity to commemorate the 60th anniversary of the end of the second world war.

Between 10am and 1pm at Linton Library, there will be static displays, with photographs, posters and other memorabilia, along with a digitally projected story using more than 500 photographs of the war in Cambridgeshire, plus some of the VE & VJ Day celebrations in the county and the wider country.

More importantly, it will be an opportunity for people to come along and tell the personal story of their wartime experience (no detail is too small).

Whether it be a chap fighting in Europe or a young girl going to school, they all have their relevance and will be eventually recorded on the BBC Peoples War website to be saved for the nation for all time.

The Linton WI is also going to serve a range of wartime delicacies, and there will be the opportunity to look up information about Commonwealth war graves on the internet.

Did you know that the "Spike" or Symonds House had a section commandeered to become a children's nursery? Here babies evacuated from Cambridge city were looked after by young nurses. Along the walls of the nursery, cupboards were built in long rows, into which the babies were supposed to be put in case of a gas attack. It is a good job that one never came.

I have recently recorded the story from one of these nursery nurses; she vividly recalls the dances at the village college and the wolf whistles as she pushed the babies in their prams up the High Street.

Andrew Westwood-Bate 892430



No excuse: Linton residents have no reason not to get fit with the opening of this superb new fitness suite

Picture by Mark Wilson

Come and meet Sir Trevor ...

FORMER England and West Ham star and soccer personality Sir Trevor Brooking will officially open the new and refurbished fitness suite at Linton village college from 5.30pm on Wednesday 19th October.

Everyone is welcome to come along and meet Sir Trevor, who will be more than willing to sign

autographs. As you are probably aware, the floodlit artificial grass full size football pitch opened in June.

The extended and refurbished fitness suite opened to members of the public from 1st August. It is more than double its previous size - and there is now a new school daytime entrance and public changing area.

New equipment has been installed, and will be available to members throughout the school day, as its use by pupils will be restricted.

Call now or email mark.wilson@lvc.org to book your induction.

Mark Wilson 890248

Jumble for Brownies

THE Wednesday Brownies are holding a Jumble sale at Linton infant's school at 2pm on Saturday 15th October. The school will be open from 10am for donations (no electrical items thank you). For more information please contact:

Daphne Brazier 892276

Your daughter's chance to be a Brownie

NAMES are now being taken for the Linton Brownie waiting list.

If you would like to add your daughter's name to start when she is seven, please give me a ring.

Daphne Brazier 892276

Hand-knitted clothes sale

A SALE of hand-knitted clothes to raise money for the Special Care baby unit at Hinchingsbrooke and the children's clinic in Chernigov, Romania, will be held on Saturday 15th October.

The sale will feature all kinds of garments for all ages from babies to ladies. Many are 'one-offs', knitted to the original design of the maker, Rosie Newman.

The sale from 11am-3pm will be at 130 Linton High Street, where there will also be a raffle and tombola. All will be made most welcome.

Rosie Newman 890739

The Story So Far...

LINTON'S proposed Bookfest was furthered by a meeting of like-minded people last month all aiming to surprise, entertain and enthral children with storytelling and book-related activities.

The festival will be centred on the infant school, the library and LVC over the weekend of 6th and 7th May 2006. The idea is for children to have fun whilst celebrating the literature written especially for them. It would be wonderful if children became excited by books again instead of spending all their time watching TV or using the playstation.

Already involved are well-known children's authors and illustrators, some of whom are local, and the village gallery has offered to organise an exhibition of illustrators' work. Although aimed mainly at children under 12 it is envisaged that the festival will be an event for the whole community. The organisers would appreciate if possible some input from local businesses, financially or in kind, and would support any book-related activities

initiated by other groups.

To give an idea of the sort of contribution anyone could make, how about creating a book of family memoirs or 'a day in the life of...' or perhaps a story from the imagination. These could be illustrated by anything creative such as pictures, photos or collages. Another possibility would be for people to submit the name of their favourite children's book or one they consider most influential, and why. Linton is a diverse community consisting of many nationalities, and anyone who would like to share their culture would be welcomed. Perhaps our schools' links with Africa could be exploited in some way?

If you would like to be involved in this ambitious project in any capacity, including behind the scenes, please contact: Anna McMahon on 892977 or e-mail lintonbookfest@hotmail.co.uk

LNT

Could you help your newspaper

THE paper has grown in size and popularity and the Linton News team needs to grow to accommodate this.

We require help with typing, reporting, sub-editing and proof-reading. None of them takes up too much time but they do need to be done at specific times each month.

If you have read this far I hope that you may have an interest in discovering how you could help the LN team.

If you think you could help with one or more of these very important tasks please contact me:

LN Editor, contact details on page 8

Reliable Local Builder

From conversions to plastering, renovations to tiling and decorating-

No job too small

Tel: 01223 890769
Mobile 07813 070369

Linton Community Sports Centre

The FITNESS Suite

Whatever your fitness need, come & see our new range of fitness equipment, changing rooms & public-only entrance Now open throughout the school day, & open 52 weeks of the year!

NEW! Floodlit All Weather Football Pitch
For more information—call or email now!

01223 890248

E-mail: lintoncommunitysportscentre@hotmail.co.uk



Nina, Jo & Claire welcome you to

BOYZ 2 MEN BARBER SHOP

Opening Hours:

Monday 8.30am - 8pm
Tuesday 8.30am - 6pm
Wednesday 9.00am - 8pm
Thursday 8.30am - 8pm
Friday 8.30am - 6pm
Saturday 8.00am - 4pm

LATE EVENINGS 'TIL 8PM
Monday - Wednesday - Thursday
AND every other Sunday
10am - 1pm

Special rates for senior citizens Monday - Friday

113^a High Street, Linton

Tel: 01223 894481



A & R PLASTERING

All aspects of plastering undertaken:

Plasterboarding

Rendering

No job too small

19 years experience
Free estimates

Linton based: 01223 890228
Mobile: 0774 8627920

FED UP REPAIRING YOUR FLAT ROOF?



NOW YOU CAN REPLACE IT ONCE AND FOR ALL

- Flat roof problems solved permanently with Rubberbond EPDM roofing systems
- 20 year guarantee
- A value for money roofing system with a 40+ year proven life expectancy
- Total protection for all flat roofs

FOR A FREE SURVEY, FRIENDLY ADVICE AND NO OBLIGATION QUOTATION CALL

Whitehall Plastics
www.whitehallplastics.co.uk Tel: 01353 723799

Freehouse

Since 16th Century

The Crown Inn

Fine Wines & Real Ales
À la Carte Conservatory Restaurant
Bar Meals Sunday Roast
En-suite Accommodation

Great food in a relaxed atmosphere!

HIGH STREET, LINTON • BOOKINGS 01223 891759
fax: 01223 890899 Email: crown@fsmall.net

Linton Complementary Health Centre

2b Bartlow Road, Linton

- Acupuncture, Peter White; MSc, MBACc
Andrew Edgar MAc MBACc
- Homeopathy, Meena Sharma; LCHC
- Massage, Peter White; MSc, Dip. Massage
- Osteopathy, Soraya Bish; BSc OST
- Shiatsu, Cindy Faulkner; BA, MRSS

Telephone: 0845 430 9120
Web Site: www.lintonhealth.co.uk

Leaning to the left: Susan Cupitt throws all her pots on a wheel, but modifies some to create slanted and tilted vessels. As each of her pots is individually thrown, no two are identical



Ashdon's first village-wide fair attracts a veritable cornucopia

ASHDON is to host its first, village-wide arts and crafts fair this year from 10am-5pm over the weekend of 15th and 16th October.

Jenny Banbury, who is heading a team of enthusiastic organisers for the Friends of All Saints Church, Ashdon, says they are aiming to make this a huge success.

She promises there will be a wealth of paintings and crafts of the very highest quality to see and buy and says the event has attracted a cornucopia of artists and craftspeople whose work is acclaimed both locally and regionally.

Jenny says the idea to put on a large-scale art fair of this sort was first hatched by local artists and enthusiasts over a year ago.

John Padfield, who heads an inspired and energetic committee for the Friends of All Saints Church, stepped forward and offered the

opportunity they were looking for. At the time, he was looking for another big fund-raising event to help with the restoration of the church fabric, for which the Friends have contributed more than £20,000 in the past two years.

Some 12 years ago, when Jenny and her husband first arrived in Ashdon, she recalls spending a very enjoyable Saturday morning in March, setting off down a footpath from the windmill to what was the old village hall for an exhibition and sale of work by local people. She says it is that comfortable mix of a village community event and beautiful hand-crafted things which they wish to recreate.

This fair is altogether more ambitious. Jenny, with Friends Tony Hawley, Michael Wymer and Clive Smith, have invited, in addition to the local exhibitors, a broad range of artists and craftspeople from

beyond the immediate area. There will be potters, textile artists, a calligrapher, artists, letter carvers, jewellers, engravers, woodturners, a wire sculptor and patchworkers, to name just a few.

These exhibitors will be housed in various locations around the village, the village and school halls and the church rooms as well as in a number of smaller, privately owned studios and ateliers.

Jenny says: "This is an exciting venture with professional and amateur artists rubbing shoulders and many of them will be actually painting and working on craft items over the weekend."

Visitors to the fair will start in the village hall where there will be a display of paintings and crafts by people who live and paint locally.

If you want to know more, please contact me: Jenny Banbury 01799 584395

Life and death on the river ... and a dream of war's end

THIS is the second part of Darryl Nantais' poem, *The Heron's Nest*. Darryl will return to writing his wildlife column for the Linton News next year.

THROUGH the ousy water plough as current, wind and design allow. Downstream towards Houghton lock with a grumbling engine - prayer non-stop.

Pigeons land on logs to coo, picking at the riverbank rous and diplomatically taboo the life and times of me, the crew.

Of splat and splash not once but more, there's evidence upon the door and twigs have landed on the floor and not retrieved to lose once more.

Their nests in elderberry tree or elm like sculpture woo an artist's dream and kestrels ease to pick and choose.

Among fresh green shoots the reedy blades, beneath the floral pale cascade the silver fishes' life will fade once yellow beak makes accurate aim.

Stalking low and slow like cat, the heron spies the shining sprat and holds position fast and hard, thin and stiff his diner's card.

Neck doubled, loaded spring and timed to catch the little fin sublime, the moment that the spring unwinds.

Trapped between these naily jaws and down the throat the flipping tour, to the heron's very core in acid bath dissolved, and furthermore, declared no more.

Now the golden beak sneaks off, with smirk or guilt? I think not. As with berry, legume or meat I pick and choose what I eat, but not quite so with heron's dish, without dessert, a tasty fish.

In the distance, church and steeples, meadows speckled with dogs and people. At the lock beside the mill, on the bridge, standing still.

Gazing down with scrutiny, perhaps with dreams of mutiny. Yet never did Columbus, Drake nor Marco Polo wind this lock, or watch as currents rush and paddles rise and levels dropped.

Clanging gear and winding keys, cranking or with buttons tease to hold the mighty weights with ease the boater's manual explains the lot for those that read.

And all pass through with chat and cheer and some with pints of local beer, and some turn into pirates here, yet no arrests are made this year.

Then when winter cools the hands, an unusual catch is brought to land.

Magnets tied with rope are dropped to gather treasures that were lost. Lock keys swung without control, knives and forks and dog bowls. And then the gifts reputed gold, 'tis well they're lost, so I've been told!

In every corner, fauna and flora vying to survive, but who are these lives that live with me, who munch at earth and breath and die?

What are their thoughts and fears, do they know or question why they too are here? Have I misread their languages, sinfully eaten them in sandwiches, crossed their boundaries with closed eyes?

A rustle in the reeds calls my senses, a feeble tease to curiosity on hands and knees. Am I like this for them to please, while they make no obvious gesture to me?

I reach out with humanity, perhaps benevolent insanity, refusing such banality like Dolittle, I do believe.

Last night I dreamed the strangest dream where all men shared their souls, it seemed, with rat and vole and all alike but only for this one dark night.

And by the morn, they had all agreed not to fight but live off seed, but those with teeth of certain creed may feed upon the hearts deceased.

And so it was with mighty joy they danced and cast aside their swords and vowed to uphold this final law that put an end to war!

The word erased from dictionaries and books, the thought was soon forgotten, yet this was just a charming dream between the bombs we're dropping!

So up the anchor, cast aweigh, with forecast good up north they say, no need to stay in rain and fester with moorings free in Godmanchester!

PLUMBLINE
Plumbing & Heating
 RELIABLE COMPETITIVE
 FRIENDLY SERVICE
 Linton
 01223 893903
 Mobile 07720986236
 Don't delay call today

DG DECORATORS
 PROFESSIONAL
 PAINTERS
 AND DECORATORS
DANIEL SAYER
 Mobile: 07971 603557
 32 Finchams Close
 Linton, Cambs
 CB1 6NE
 Tel & Fax: 01223 890503
 e-mail dan@dgdecor.co.uk

PIANO FOR PLEASURE
RICHARD C GODEL
 MA (Hons) (Oxford)
 ARCO Dip. Ed. (Reading)
TEACHER of PIANO & ORGAN THEORY, SINGING EXAMINATION WORK & DIPLOMA WORK
 All beginners, advanced pupils and returners welcome
 Linton School of Music
 63 Finchams Close, Linton, CB1 6ND
 01223 893941

BED AND BREAKFAST
 at
THE OLD BAKERY WEST WRATTING CAMBRIDGE CB1 5LU
 Also cottage to rent for holidays, weekends and short-term breaks. (situated at West Wrattling) Sleeps six people
Tel: David or Carol (01223) 290492

Family Resource Centre
 Village Hall, Coles Lane, Linton
 Wednesdays during term time
Tots in Tow
 Pre-school Baby & Toddler Group, 10 to 11.30am
Rock Café
 A Café for the Community
 1.30 to 3pm
 Hosts for SCDC Housing Surgery & Citizens Advice. See our calendar for dates
 www.lintoncornerstone.org or ring Tracey 894656

FED UP PAINTING YOUR ROOFLINE?
 Guttering
 Down Pipe
 Ten Year Colour Fastness Guarantee on all Systems
NOW YOU CAN REPLACE IT ONCE AND FOR ALL
 • We offer a professional local service with 15 years experience
 • All material are guaranteed plastic products
 • Available in the following colours... black, white, mahogany and light oak
 CALL NOW FOR OUR UNBEATABLE PRICES!
 www.whitehallplastics.co.uk TEL: 01353 723799

Realise your child's potential
Maths and English After-School Programmes
 • Build solid foundations in maths & English
 • Give their confidence a real boost
 • Complement the school curriculum
 LINTON STUDY CENTRE
 01223 893578
01223 893 578
 kumon.co.uk
KUMON
 Every child can shine

01223 890 965
 THE ONLY NUMBER YOU WILL EVER NEED
LINTON CABS
 "THERES ONLY ONE LINTON CABS"

GEOFF NORBY
 Reg No. 34107
PLUMBING & HEATING ENGINEER - Estd. 1966
 All aspects of Central Heating and Plumbing
 Boiler Service & Maintenance
 Bathroom Suites & Power Showers
 Kitchen Installations - Tap Washers
 Telephone 01223 892311
 Mobile 07885 068047

Traditional Acupuncture
 An Ancient and Trusted Way Of Healing
 Some complaints treated by acupuncture:
 • Stress/Anxiety • Pain (relief of) • Insomnia
 • Low energy • Back pain/Sciatica • Asthma/Allergies
 • Depression • Arthritis/Rheumatism • Digestive
 • Headaches • Stiffness/Tension • Menstrual
 • Colds/Low immune • PMT • Menopause
Therapeutic Massage
 Beat Stress, Recover More Quickly from Injury, Feel Energised!
 Practitioner
 Peter White MSC, MBAcC, Dip Massage, Dip TCM China, Insured
 For a free initial consultation and bookings call: 0845 430 9120

ProClean
 For a Local Professional & Friendly Service
Carpet Cleaning
Mobile Valeting
Upholstery Cleaning
Contract Office Cleaning
Cleaning of Patios & Paths
TEL: 890433



THE BUSH TELEGRAPH

THE new term is now well under way and will no doubt pass at the usual hectic pace. Last month staff and students returned to celebrate the highest GCSE results the college has ever achieved – results that place LVC among the nation's top 50 schools (including selective schools). Over 88% of our students achieved their five higher grades and 26% of all the grades achieved were A star or A. Two students even managed a full house with all ten grades at A star – the very highest level. The gap between boys' and girls' achievement that is such a concern nationally also reduced to 7% which means our boys are not subscribing to the worrying trend among the nation's male population that learning is not 'cool'. Results like these are a fantastic affirmation of the way the College works as a school and the hard work and commitment of its staff and students.

You will have seen the progress with the building work on the site and no doubt be wondering when the tennis court area next to the all weather pitch is to be completed. Unfortunately we have had some planning difficulties with the completion of the tennis courts. Although we have agreed to a large number of trees and shrubs being planted, these are not deemed to be sufficient by the district council and planning consent has been delayed. We have pointed out the difficulties even more trees would give us; loss of playing field space, leaf fall etc. onto the new playing surfaces and the general cost of maintenance, but so far our arguments have fallen on deaf ears. I have also pointed out the frustration that some members of the community have expressed to me about being prevented from using a promised facility by the very authority that partly funded it in the first place. I have to say, they have a point. However, negotiations are continuing and we are hoping for a resolution by early October. So by the time you read this I hope we will be in a position to begin that final stage of the sports redevelopment. The new fitness suite is already proving very popular and is now fully equipped with all the latest machines. We only await the plants and comfortable furniture for the relaxation area but again these should be in place by early October. I am also delighted to say that the new all weather pitch is proving very popular with local teams and clubs. If you would like any information about how to use any of these fantastic facilities, just call Mark Wilson on 890248 and he or any of the sports centre staff will be very happy to help.

The building of Granta School is also well under way and many people have commented positively on the design and regretted the fact that it is not nearer the front of the site so that it can be seen more clearly. The next major project will be the building of the new main road entrance that will commence around Easter time and by then we will have completed the final design of the rebuilding of the college itself.

Given all these exciting developments it is with mixed feelings that I come to the end of my last September Bush Telegraph. Interviews for the post of Principal of LVC have taken place this week and I am very pleased to be able to tell you that Caroline Derbyshire, currently deputy head at Saffron Walden High School, has been appointed. I am sure you will welcome her into their new role in the New Year and that she will enjoy the same high level of support in the community as I have.

Clive Bush

PLANNING APPLICATIONS

S/1635/05/LB M^r & M^{rs} M Rose, 125 High Street, Linton.

Internal and external alterations to outbuildings and garage to create garden room with shower room and spiral staircase to first floor studio with new boundary wall and gates (revised scheme).

S/1636/05/F M^r & M^{rs} Rose, 125 High Street, Linton. Extension and use of outbuilding as additional residential accommodation, erection of boundary wall and gates (revised scheme).

S/1656/05/F M^r M Watts, 7 Maltings Cottages, Long Lane, Linton. Extension.

S/1700/05/F M^r & M^{rs} Linsdell, 9 Granta Vale, Linton. Conservatory.

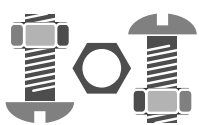
S/1716/05/LB D^r Harris, Church Cottage, 6 Church lane, Linton. Alterations - removal of pantiled/weatherboarded kitchen/shed and adjacent garage/outbuilding. Heightening of front boundary wall. Alteration and conversion of existing utility/pantry to WC. Construction of extension attached to boundary wall comprising single storey flat-roofed link to kitchen/breakfast room, utility room, master bedroom, dressing area and en-suite.

S/1720/05/LB D^r Harris, Church Cottage, 6 Church lane, Linton. Extension.

S/1727/05/LB D^r F Reimann & D^r F Gribble-Reimann, Emson's Farmhouse, 18 Bartlow Road, Linton. Internal alterations-replacement of sole plate in stair tower with green oak.

S/1756/05/F M^r & M^{rs} R Clay, 1 Hollybush Way, Linton. Fence.

GLENWOOD BOLTS & SCREWS LTD



SUPPLIERS OF QUALITY FASTENERS, FIXINGS & SILVERLINE TOOLS

Unit 2 Lintech Court
The Grip Industrial Estate, Linton
Cambridge, CB1 6XN
Tel: 01223 892095 / 893931
Fax: 01223 894122

Cobalt Cars Personal Driving Service



AIRPORTS – WEDDINGS
SPORTS EVENTS

For all Business or Personal occasions
Advanced Bookings call Bill
07815 811834
cobalt_cars@hotmail.com

Bike Repairs



ANYTHING YOU NEED
DOING TO YOUR BIKE,
CALL 07813389503

NRS CARPETS



HOME SELECTION
FREE MEASURING &
ESTIMATING

All types of flooring
available

Tel: 01223 893634
Mobile: 07885 173113

The Way We Were by Garth Collard

The origins of Linton and its street names, part two

IMMEDIATELY on the left as you cross the Swan Bridge is Symon(d)s Lane. The first part of the lane as far as Hillway was known as Swan Lane until around 1840. It was named after the adjacent Swan Inn. Hillway was constructed between 1935 and 1937 and the council properties were built on the valley slope above the river Granta. The main section of Symonds Lane, from Hillway to Back Road was called Semans Lane on the 1600 Linton manorial map. The Se(a)mans name is interchangeable with Simons or Symonds in the Linton property records, and families of these names held land and properties here from the 16th century.

The Workhouse and Union Lane names were used after 1836 when the Linton workhouse was built. This housed the poor from 20 local parishes which formed the Poor Law Union for the district, hence the use of both names. With the official closure of workhouses in 1929 the name of the road reverted to the historic Symonds Lane.

Palmer's Close was completed by 1962 and named after the famous Linton doctor, William Mortlock Palmer who died in 1939. He lived at Richmonds in Symonds Lane.

Coles Lane was called Riveydene or the London Way in 1600. The lane led to a stone cross on the London Road, now Back Lane. Coles Lane was known as Ballington or Ballydon Lane from the early 1700s until 1838. Ballydon was the old name for the ridge which extended from the Rivey towards Hildersham. The pre-Enclosure map of 1838 provides the first documentary evidence of the use of the Coles Lane name. It was derived from Robert Cole, a wealthy 18th century landowner and corn merchant who lived in the large timber corner house at the High Street junction with the Lane.

Did-dell Court was completed in 1978 and named after Augustus Did-dell, a local farmer and builder in the first half of the 20th century.



Coles Lane circa 1900

Church Lane was called Church Way or Church Street in 1600. The link to the church is obvious. For some years in the 19th century both the Church Lane and Horn Lane names were used to describe the present day Church Lane.

The origins of Mill Lane can be traced back to 1222 when Walter de Furneaux granted waste land in Hadstock manor to John, Bishop of Ely. He permitted a mill to be erected by the river Granta, and the lane was thereafter called Hadstock Mill Lane. The Hadstock part was dropped early in the last century.

The term Green Lane is derived from the link to the old village green. The open green was enclosed in 1840 and access barred by the new walls. The first Linton market was held there in 1246. In medieval times the lane was called the "Way to the the olde Market." It was only in the late 17th century that the term Green Lane was used.

The present day Balsham Road did not exist before 1840. In 1600 a small track called Wood Lane turned sharp right to Borley Wood, just beyond Smith's scrapyard. The road leading on to Chilford and Balsham was only constructed after Enclosure in 1840. Prior to Enclosure the main road to Balsham was along the footpath by the cemetery leading up to Rivey wood and the water tower. It was called, "The Balsham way from Lynton over Ballydon Hill."

Back Road or Back Lane was known as the Cambridge Way or London Road in 1600. After 1838 it became known as Back Lane, and the change to Back Road came in the early 20th century. Some 19th century maps called it

Hildersham Road.

Granta Vale was completed in 1962 and named after the nearby river Granta.

The narrow lane near the Bartlow crossroads is called Meadhaven Lane. The name was used in 1600 and locals

refer to it as Oxen or Hoxham Lane. In medieval times the land close to the river Granta was called Oxham common or Meadhaven, hence the present name.

In 1600 the Horseheath Road was called "The highe way to Horseth or Haverill." By the 18th century the name Horseheath Road was in common usage. Before Enclosure the road ran across the present day Copperfields estate directly linking up with Back Road.

Lonsdale estate was named after Christopher and Sarah Lonsdale who were the Lords of the Barham Estate until Sarah's death in 1807. Wheatsheaf Way comes from the 19th century Wheatsheaf beer house sited on the edge of the village as you drive towards Haverhill. Hollybush Way was named after Hollybush field which formed part of the land in this area owned by the Barham Estate. Dolphin Close is an old Lynton name, but not related to this area of Linton Heights. The close was actually sited in the Granta Vale area. Bawtree Crescent was named after a Tudor gentleman farmer called William Bawtree who owned strips of land hereabouts. Ballingdon Lane links to the old name for Coles Lane.

Pembroke Lane comes from the Pembroke College ownership of the lands inherited from Sarah Lonsdale's bequest in 1807. Brinkman Road was named after Johan Gottlieb Brinkmann (1836 - 1917) who was a prominent Linton resident. He built

the Beeches at the bottom of Green Lane in 1891.

Bartlow Road was once called Barham Road because it led to Barham Hall farm on the way to Bartlow. Locals always use the term Barham Road to describe the present day Bartlow Road. References to both names can be found in documents from about 1838 until 1967.

William Emson was a wealthy 18th century tenant farmer of this part of the Barham Estate. Locals called his farmhouse Emson's Farm because he tenanted it for well over 20 years.

The Finchams estate is named after John Fincham who owned a small four acre home-stand on this site. Pembroke College purchased the farm in the mid 19th century and the farmhouse was demolished by 1931.

Bakers Lane only became a road after the Enclosure of 1840. It was named after the bakery which was built in the late 19th century on the site of the present day hairdressing salon. The first reference to Martin's Lane was in 1838 when the Enclosure Award noted that a footpath ran along the lane to Martin's Meadow. Martins Meadow was mentioned on the 1786 Wedge Map of Barham, and was probably named after Philip Martin, an 18th century Linton surgeon.

This completes my survey of the origins of street names. I do not have the space to deal with every Linton street name, but have covered those names with known historical associations.



Green Lane circa 1920

Pictures courtesy of the Cambridge Collection

The Dog & Duck
16th Century Riverside Inn
Telephone: 01223 891257
Website: www.dogandducklinton.co.uk

MORNING TEA & COFFEE SHOP
Open Monday to Saturday from 9.30am
Large choice of coffees & teas, plus biscuits, cakes,
hot buttered croissants & toasted teacakes.
A lovely warm environment in which to relax and escape the winter chill.
COME ON IN AND TRY US
(Please use patio garden entrance to Riverside Restaurant)

Designer Drapes
Linton Road, Hadstock
Tel: 01223 890556
Email: DrapesatHadstock@aol.com

Made to measure Curtains and Blinds
Re-Upholstery service
Foam cut to size
Fabric available by the Metre
Collection and delivery Service

Why not call in and browse through our pattern books

THE LINTON NEWS
Next Publication Date 7th November 2005
DEADLINES for ADVERTS Monday 17th October
and for NEWS ITEMS Friday 21st October

ITEMS FOR THE EDITOR
Can be put in the
Linton News Box
in the Post Office
Editor: Wendy Foster
11 Emsons Close
Telephone or text
07821 610861
email: Ineditor@linton.info

Our waiting list for
placing adverts is
currently closed
Our advertising Manager
is Judith Rouse
Telephone or text
07749 198977
email: adds@linton.info
For distribution queries
please contact:
Kate France 891602



Parish Council Matters

One-Way Update

Parish Council Matters is written, edited and published by the Parish Council with the support of the Linton News Team.

The Re-birth of a village institution

THE results from the questionnaires demonstrated a clear majority in favour of the one-way system becoming permanent. These results were included in the assessment of the trial one-way system by County Council who presented the following recommendations to the South Cambridgeshire Traffic Management Area Joint Committee held on Monday 12th September 2005:

- 1) make permanent the High St one-way Experimental Traffic Regulation Order.
- 2) make permanent the Back Rd one-way Experimental Traffic Regulation Order.
- 3) introduce permanent protected parking build-outs in line with the temporary measures, with the exception of the build out adjacent with No. 113 which will be relocated to outside No. 105.
- 4) introduce permanent speed humps in line with the temporary trial measures in Back Rd
- 5) introduce carriageway narrowing at the start and finish of the High St one-way section
- 6) improve the radius of the kerb line at the junction of High St/Coles La and highlight the pedestrian crossing point.
- 7) review speeds post construction and review a 20mph speed limit as appropriate.
- 8) note the provision of permanent junction layout changes at Back Rd/Balsham Rd, including widening on the north side of Back Rd from Rivey Way to the Back Rd/Balsham Rd junction.
- 9) change the vehicle priority at Coles La/Back Rd junction and Coles La/High St junction.

The committee **agreed** all the above recommendations. A copy of the full report made by County Council to the above meeting is available in the Parish Office for those interested in seeing how their own comments

were considered during the assessment process. One of the areas of prime concern by many residents was what effect the one way system had had on speed of vehicles in the area. The following table shows the results used by County Council in their presentation which were taken from the automatic vehicle speed checks carried out by the police both before and during the trial.

Summary of speed data as presented by CC using the 85%tile

Summary of speed data as presented by CC using the 85%tile figure.

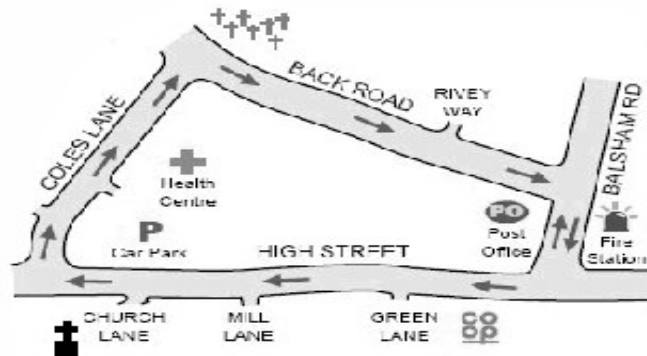
	Back R ^d Mph	High S ^t Mph
Before Trial	21.13	25.96
Phase 1	29.19	20.74
Phase 2 (July)	25.92	28.14
Phase 2 (September)	26.00	26.00

figure.

County Council has assured us that speeds will be monitored following the one-way system becoming permanent. Other areas of interest to residents regarding the one-way system, clarified by Alistair Frost, County Council, are as

- ii) It is expected that work will commence by January 2006 and be completed well before end of March 2006.
- iii) County Council will be re-instating the parking outside the cottages in Back Rd as soon as they can get a contractor on site to burn the yellow lines off.
- iv) County Council are happy to organise the double yellow lines in Did-Dell Court but not to extend them in to Coles La.
- v) It is proposed to support the edge of the road surface in Coles La between the Health Centre entrance and the junction of Back Rd to assist the buses and prevent long-term damage.
- vi) County Council are not proposing a safe crossing point on Balsham Rd within the scheme. This may be able to be progressed via the 'Safer Routes to School' scheme.
- vii) The priority for traffic will be altered at both ends of Coles La. Traffic travelling west on the High St will have to give way to traffic travelling east at the junction with Coles La. Traffic travelling up Coles La will have priority at the junction with Back Rd over traffic travelling east on Back Rd. This alteration will assist the buses in icy conditions and also slow traffic down along Back Rd.
- viii) There has been no progress by County Council with the Fire Service with respect to provision of additional parking and John Batchelor will now pursue this on our behalf.
- ix) Plans for alterations to Back Rd/Balsham Rd junction will be based on that presented previously for the JFMIBS, ie. Widen the southern pavement, move the position of the highway northwards by cutting in to the bank and provide a protected parking bay outside the cottages.

- iii) It will not be possible within this Experimental Order to change the Traffic Order in the area opposite the old Princess of Wales.
- iv) If necessary following the meeting with the Coop an alteration could be applied for. Should there be a delay in this being agreed it would not hold up the construction of the permanent one-way system.
- v) Any comments regarding the proposed alterations are welcome **BUT** County Council acknowledge and assess them.



Phase 2 - Linton One-Way System

follows:

- i) It is intended that Alistair Frost and Dan Watts will mark out the proposed changes within the permanent one-way system on Thursday 15th September.
- ii) County Council will be meeting with a manager from the Coop on Thursday

Council do not expect to alter their plans other than minor 'tweaking' of the detail. It would be simpler if residents' comments came via LPC so we can correlate them and ensure County Council acknowledge and assess them.

Val Urwin, Chairman
LPC Traffic Working Party

STANTON'S Lane Bridge a village institution, this small bridge joins Stanton's La which runs from the A1307 right through the recreation ground, over the river up to Symonds La. Known in the 18th century as Stickling's Bridge it was renamed Stanton's Bridge in the early 19th century after Josiah Stanton.

Josiah Stanton was the Publican of the Red Lion Inn, which was on the corner of Horn La and the High St. As was typical of this day he was also a farmer and tenanted the farmland on either side of Stanton's La, hence the renaming.

Next to the bridge was originally a ford, which was closed in 1921. The Parish Council applied on two occasions to have the ford reopened but to no avail, the Rural District Council finally refused the application in 1928. The bridge was originally a wooden bridge and was replaced in the 1920's.

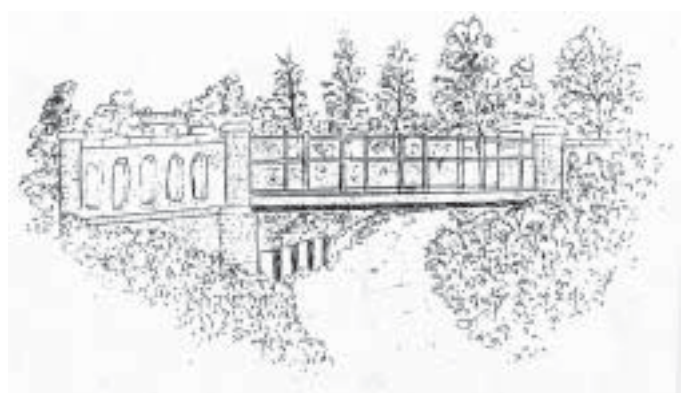
This much used bridge is now in need of updating and repair, due to increasing demands made upon it. The problems with the current bridge were obvious - it is too narrow for most wheelchairs, disability scooters, etc. The supports have weakened and need some re-building. It has been vandalised, so that the structure has been weakened and the wings all but lost, the repair with metal posts and rails has

helped with safety, but was meant as a temporary measure only. It is showing general wear and tear and looks rather shabby.

CLr Enid Bald has met with Stephen McGee, the Bridge Engineer, to discuss designs for a replacement bridge, and Clair O'Neill of Safer Routes to School. The discussion took the form of the type of traffic the bridge now has to withstand, including the volume of traffic. This very busy bridge is used for access to the recreation ground, the village college, playgroup, nursery, and the sports centre. Claire O'Neill mentioned that the bridge had been noted in the travel plans of Linton Village College and the two other schools for their Safer Routes to School applications therefore highlighting the importance of making this bridge safe and user friendly for all Linton residents. Cambridgeshire County Council have agreed to meet the costs relating to the removal of the old bridge and the installation of the new. Safer Routes to School have agreed to help with funding as have the Parish Council. When the works are agreed the removal and installation should only take a few days.

Linton Parish Council have congratulated and thanked C^{llr} Bald on her hard work relating to this project.

LPC



Stantons lane bridge in its full glory

CHRIS FLETCHER CARPENTRY & BUILDING MAINTENANCE

- KITCHEN & BATHROOM FITTING,
- DOORS & WINDOWS REPLACED
- PATIOS & LANDSCAPING
- CONSERVATORIES
- GARAGE CONVERSIONS

For information or quotation:

01223 897233
07775 538095

HECKFORD NORTON SOLICITORS

Your local professionals for whatever legal help you need in your business or personal life

Tel: 01799 522636

18 HILL STREET, SAFFRON WALDEN, ESSEX CB10 1JD
www.heckfordnorton.co.uk

TIM PHILLIPS & Co. accountants

Independent, specialist service for:

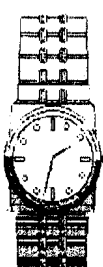
- Small Businesses
- Self Assessment
- Personal Taxation

You do not have to contact your existing accountant when you decide to change to us - the formalities are done for you

Copley Hill Business Park, Babraham
01223 830044,
www.TPaccounts.co.uk

The 'One-Stop Shop' for your Accounts and Tax Returns

Small Gifts



Watch Batteries and Straps fitted while you wait. Jewellery Repairs including sizing and polishing.

All repair work carried out on the premises by a professional with 40 years experience

- We stock a selection of
- Silver Jewellery • Photo Frames •
- Collectables • Toiletries • Greetings
- Cards • Gift Wrap



61 HIGH STREET, LINTON, CAMBRIDGE CB1 6HS
TEL: (01223)894225



01480 456789

Ermine Street Alconbury Cambs

ADMIRAL WINDOWS

CONSERVATORIES

online | www.admiralconservatories.com



POINT CONTACT AT THE GRIP

Hygiene products business to business

- For Clean plates, Clean glasses,
- Clean prep. surfaces, Clean toilets
- Economically, Purely, simply biologically
- Many choices from a range of detergents - degreasers - descalers - toilet rolls - kitchen rolls - powders and liquids.
- Daily deliveries- monthly accounts- c.o.d.
- Cash and Collect

Telephone **01223 894000**

Council minutes council minutes council minutes council minutes council minutes

THE Minutes from the meeting held on 21st July were agreed and signed by the Chairman after the following amendments were made: Item 55 - typing error corrected. Item 60 - should read Bob Howard. Item 61 - the last sentence should read with identical security of tenure.

The Minutes of the Planning meeting held on 21st July 2005 were agreed and signed.

Reports from Co-ordinators:
Open Spaces - C^{llr} Clay reported that the footpath from Bakers L^a to Horseheath R^d still had not been cut. The Clerk reported that John Cooper, Rights of Way Officer had been contacted and had advised that it would be cut in early July. C^{llr} Rossiter will be meeting with him on 5th August and will discuss. Recreation Ground - C^{llr} Kenyon asked that when the Recreation Ground verge and hedge is next cut care be taken not to destroy the bramble bushes. Cemetery - C^{llr} Potter reported that a small plaque type gravestone required sinking further into the ground to avoid being damaged by the mower. He also required the exact position of the large branch that had been reported at the previous meeting.

Rights of Way - As previously reported C^{llr} Rossiter will meet with John Cooper to discuss Rivey L^a, footbridges at the ford and cemetery and other footpaths that require attention.

Venture Playground - C^{llr} Hammett reported that the elephant was still out of order.

Leadwell Meadow - C^{llr} Cox

reported that Hogs Holme Meadow required a cut. Clerk to arrange a meeting between Herald and C^{llr} Cox Parish Plan - C^{llr} Rossiter reported that a final payment of £462.75 had been received in respect of the Parish Plan. Glebe Land - C^{llr} Rossiter was pleased to report that the Glebe Land was being used. The bench had not yet been installed.

Churchyard - C^{llr} Gore will arrange a meeting when everyone is available.

A quotation had been received for construction of footpath from Clapper Stile to tarmac walkway (precepted). C^{llr} Hickford proposed that this be accepted. C^{llr} Cornell seconded this proposal and it was agreed by the meeting.

Correspondence Sheet No: 4 (July) 2005 Had been circulated and all items considered. Of particular interest:

Item 30 - LVC Sports Centre Management meeting, request for a representative from LPC - this will be considered at next meeting
Item 38 - Anna McMahon re Childrens Bookfest, an introduction and invitation to meeting.

Item 44 - S' Edmundsbury BC - Local Plan Public Enquiry minutes

Item 45 - M^{rs} Goodwin re: churchyard adoption

Item 48 - M^{rs} Paterson copy of letter to Highways

Item 53 - Moore Stephens Auditors - email re annual return

Item 55 - CCC - letter regarding disabled parking space - Councillors have no problem with this proposal - Clerk to write.

With regard to traffic issues it was agreed by the meeting that C^{llr} Urwin be allowed to give the report from the Traffic Working Party (TWP) given her involvement for a considerable number of years.

C^{llr} Urwin had previously distributed a very detailed report from the TWP. The TWP had met on 2nd August and had discussed in depth all issues relating to the impact of the trial one way system. She explained that this issue is one of the biggest decisions that this Council has had to make and would impact on village life for a long time to come. All problems need to be addressed and all residents' comments and responses to questionnaires need to be visited. Trying to solve one problem area may result in creating others. The detail of the TWP report was then explained in full.

The Chairman then thanked C^{llr} Urwin and asked in turn for all Councillors to give their views on the trial. C^{llr} Cornell had concerns regarding the Back R^d/Balsham R^d junction and the impact on children cycling to the Junior School. Back R^d had been part of the Safer Routes to School initiative and now children could only cycle one way. In addition this junction was now thought to be more dangerous to cross on foot. C^{llr} Cox distributed copies of graphs which compared speed profiles taken pre-trial, during Phase 1 and showing the most recent data from Phase 2. He explained that the method utilised by County

Council to evaluate the results involved comparison of the 85th percentile speed which does not give an accurate appreciation of how fast the majority of vehicles travel over a given timed period. His graphs, however, clearly demonstrated that the speed in the High S' had significantly increased during Phase 2. In addition it was noted that it was possible therefore that even higher speeds in the High S' could occur. C^{llr} Cornell reported that she had visited the recent traffic exhibition and had discussed the issue of High S' speed with Alistair Frost and Dan Watts from County Council. They had assured her that the issue of speed would be addressed. In the short term they would ask for police speed checks and maybe a temporary flashing sign. In the long term this matter would have to be resolved by other means. C^{llr} Gore had spoken to M^r Paul Kirby from Stagecoach who had reported that the bus service had improved reliability and drivers preferred the one way system. Further, M^r Kirby had no objection, in principle, to an extra bus stop on Back R^d if the trial were to be made permanent. C^{llr} Gore explained that Stagecoach needs to offer a fast and reliable service to Haverhill and since they have narrow profit margins, if we do revert back to a two way system they may decide to use the A1307 more regularly bypassing the village resulting therefore in a huge impact on the elderly. The minimum requirement therefore would be one-way for buses and HGVs. C^{llr}

Gore requested two additions to the concerns suggested by the TWP, firstly to address the specific problems identified at the junction of Back R^d and Balsham R^d and secondly to explore alternative additional parking provision for the Post Office. C^{llr} Kenyon considered that the High S' was safer for pedestrians. She was however concerned with the impact on businesses, particularly the Post Office. C^{llr} Hammett would still like to see traffic calming in the High S' and Coles L^a. C^{llr} Rossiter thanked C^{llr} Urwin for her hard work in compiling and analysing the information and reminded Councillors that the Parish Plan results had indicated support for a one-way system. The need for safety must be balanced against the environmental impact on residents. C^{llr} Bald had concerns regarding pedestrians crossing at the bottom of Coles L^a. She too had concerns regarding the impact on the Post Office and other businesses. C^{llr} Albrow thought that the implementation of the system was long overdue and expressed concern for children's safety if one-way was abandoned due to the danger when the traffic is two-way. C^{llr} Clay was in agreement of the trial one way being made permanent and the possibility of widening the pavements. C^{llr} Hickford thought that a 20 mph speed limit was essential due to the increased speed in the village and should be added to our response. He also asked for the problems of crossing at Coles L^a and Symonds L^a to be addressed.

C^{llr} Potter thanked all Councillors and proposed that we

vote on the recommendation of the TWP.

Full Council give support to the Phase 2 One-Way System requesting that County Council are asked to address the following areas of concern: Pedestrian safety on Coles L^a both at the junction with the High S' and exit from the Health Centre; residents request for double yellow lines at the entrance to Did-Dell Cⁿ; a full assessment of provision for a safer route to school for children travelling to Linton Heights by cycle and foot particularly addressing crossing Balsham R^d; specific problems identified at the junction of Back R^d and Balsham R^d; alternative additional parking provision for the Post Office; introduction of 20 mph speed throughout the one way system.

C^{llr} Bald seconded the proposal. Those in favour - 9, those against - 1, those abstaining - 2. The proposal was carried.

Suggestions for Jointly Funded Minor Improvement Scheme bid. Following discussion a decision was made to put forward two bids; firstly to re-submit the Disabled Access bid and secondly to request a safer crossing point on Balsham R^d in the vicinity of Back R^d.

C^{llr} Cornell requested on behalf of Access 1307 that LPC provide a supporting statement against Haverhill development with respect to its effect on the road systems and local communities.

The meeting closed at 22.10^{pm}

Chapel
Independent Financial Advisers
SPECIALIST ADVICE ON
Pensions - Investments - Mortgages - Protection
Personal Financial Planning
FREE Initial Consultation & Without Obligation

Ian Cross
01223 892821
e: chapelifa@aol.com

De-Salis House, 6 Hillway Linton, Cambs, CB1 6JE

A Member Of Sesame limited Which is Regulated By The Financial Services Authority
YOUR HOME IS AT RISK IF YOU DO NOT KEEP UP THE PAYMENTS ON A MORTGAGE, OR ANY OTHER LOAN
SECURED UPON IT. WRITTEN DETAILS ON REQUEST

J-5
Uni-sex Hairdressers
12 High Street Linton Cambridge
Telephone (01223) 892648
Sarah & Jo From local Area would like to welcome You.

Mon Closed
Tues 9-6 Wed 10-7 Thurs 9-6 Fri 8.30-5
Saturday 8-1

O.A.P. Rates Tuesday & Thursday

LINTON PARISH COUNCIL
Linton Village Hall, Coles Lane, Linton, Cambridge, CB1 6JS. Tel: C. 891001
www.lintonpc.org.uk
Clerk to the Council - M^{rs} Sue Parry
Email: lintonpc@btconnect.com
Office hours : Monday 9am-12noon, & 4-6pm, Tuesday-Friday 9am-12noon
Or by appointment

Parish Council dates for Full Council meetings:
October 6th and 20th; November 3rd and 17th
All meetings held at the Cathodeon Centre and commence at 8pm

N.C. Bowden
ELECTRICAL
Electrical Installations
Periodic Inspection Reports
Tel: 01223 893 497
Mobile: 07976 838 373

National Inspection Council for Electrical Installation Contracting
APPROVED CONTRACTOR

CHIMNEY SWEEP
J. L. WIGHT
Guild of Master Sweeps.
Fully Insured
Qualified advice / problems solved.
Certificates issued.
01954 782284
20 Rampton Drift, Longstanton

Students 20% off THE Special Kids Prices
UTTT ROOM
37 Bartlow Road, Linton
Tel: Pippa (01223) 890890

OPENING TIMES
Mon 9-5 pm Senior Citizens Monday & Tuesday
Tues 9-5 pm
Wed 9-7 pm
Thurs 9-7 pm Late opening until 7 pm on Wednesday & Thursday
Fri 9-5 pm
Sat 9-3 pm

Little Hands Nursery School Linton
The Station House, Station Road
Morning, Afternoon, Lunch and Late Stay Sessions, 9am to 4pm during term time for children aged 2 to 5.
Pre-School sessions, to prepare for infant school. Holiday Clubs run during school holidays.
High staffing ratio, quality care.
For further information ring: Marion: 897945 (school hours) Jane: 503972 (at other times)

K. CLAXTON
Painter & Decorator
Interior & Exterior
Free Estimates
Tel: (01223) 892190
Mobile: 07910149353
Linton Based

GARAGE DOORS
SERVICED - REPAIRED - REPLACED
(SPARES FOR ALL MAKES)
FREE : Estimates, Advice, Brochures.
NEW DOORS Electric Operators
Steel - Maintenance Free Steel -
Glass Fibre - A.B.S.(PVCu) Timber -
Sectional Doors (Insulated/Single Skin) - Roller Doors
A.B.C. GARAGE DOORS SYSTEMS Tel 01223 893798 Mobile 07774499537
www.garagedoorsabc.co.uk email@garagedoorsabc

BEAUTY & WELL-BEING
At Flint Cottage, Linton, Cambridgeshire
Fully Qualified Beauty/Holistic Therapist (VTCT IIHHT)

Body Massage (ladies only) Aromatherapy Facial & Body treatments
Indian Head Massage, Reflexology, Susan Molyneux Facials, Jessica Manicures & Pedicures, Waxing, Brow Shaping/Tinting Electrolysis & Ear piercing, Heavenly Bodies Air-brush Tan System

Tele: - Annette Jackson 01223 893114 / 893896
BABTAC member

Also at Riverside Barns, Garden Centre, Ickleton
British Association of Beauty Therapy & Cosmetology

Benten & Co.
Chartered Certified Accountants

We are a friendly, well established firm, large enough to deal with most accountancy and taxation matters (ranging from personal tax returns to audit of limited companies).

For an initial consultation (without obligation) please contact Richard King
Abbey House, 51 High Street, Saffron Walden
Telephone (01799) 523053
www.benten.co.uk