

## Think fire safety before lighting your BBQ

BARBECUES can be a great way to spend time with family and friends, especially when the sun is out. To help you stay safe, and reduce the risk of a fire when having a barbecue, follow our tips below.

- Never use a barbecue indoors or on a balcony
- Make sure barbecues are placed on level ground where they will not tip over
- Keep barbecues away from your home, sheds, fences, garden furniture, trees, shrubs and tents
- Don't drink too much alcohol if you are in charge of the cooking
- Don't set up the barbecue in a place where people have to squeeze past it
- Keep children, pets, and garden games well away from the cooking area
- Never leave the barbecue unattended
- Follow the safety instructions provided with disposable barbecues
- Only use approved barbecue fuel or fire lighters - never use petrol or paraffin.

For more information, visit [www.cambsfire.gov.uk](http://www.cambsfire.gov.uk), follow us on social media, or call 01480 444500.

Photo by [Marek Mucha](#) on [Unsplash](#)

Cambridgeshire Fire and Rescue service



## Bartlow 3 Counties Charity Walk



WE look forward to seeing you on Sunday, 4<sup>th</sup> May, starting at Hills Farm, Bartlow, CB21 4PW. A great day is planned with activities for all the family. Limited discounted tickets on sale at: [www.bartlow3countieswalk.co.uk](http://www.bartlow3countieswalk.co.uk). Hurry and get yours now, as they are selling fast. Well-behaved dogs on leads are welcome. There are four walks to choose from, ranging from the one mile trail to 13 miles, with six and nine mile options. There are toilets and refreshments en route. Check our website for start times and other details. No need to bring a picnic as there is delicious food available on the day with tea and cake too. There will be a bar with local beer, soft drinks, and also a tempting gin bar. Children's activities in the farmyard are free for registered walkers. Wonderful Linton Jazz will be entertaining us in the afternoon until the raffle is drawn. Please bring cash as the signal in Bartlow can be unreliable.

Hetty Findlay

Duncan Ogilvy (Walk Coordinator 01223 893644)

## Make a summer of smiles happen!

EVERY child deserves a summer filled with laughter, play, and unforgettable memories. But for children with disabilities, accessing these opportunities can be challenging. That's why Cambridge Joint Playscheme is dedicated to providing a vibrant and inclusive summer play scheme at the Granta School in Linton, and we need your help to make it a reality!

We're currently seeking passionate and dedicated individuals to join our team as committee members or trustees, playing a vital role in creating a magical summer for disabled children in our community and in shaping the future of our charity.

We are seeking dedicated individuals to join our board of trustees. As a trustee, you will:

- Provide strategic direction by contributing to the overall vision and development of the charity.
- Ensure good governance by oversight of the charity's finances, legal compliance, and ethical practices.
- Become an advocate for disabled children, championing the needs of our beneficiaries and raising awareness in the community.
- Use your skills and experience, especially in areas such as finance, fundraising, marketing, or legal matters to support the charity's growth.

This is a fantastic opportunity to make a significant and lasting impact on the lives of disabled children and their families.

### Join Us!

If you're ready to make a difference this summer, we would love to hear from you. If you would like more information and an informal chat please contact me on

[alisonwalker67@gmail.com](mailto:alisonwalker67@gmail.com) or phone 07815702083

[www.camjointplay.org.uk](http://www.camjointplay.org.uk)

Alison Walker

### Annual Meeting of the Linton Parish

Thursday 8th May 2025  
at Linton Village Hall  
doors opening at 6.30pm

An opportunity to hear updates from the Parish Council and groups active in the parish and to share issues/concerns or suggestions/ideas you may have relating to the local community.

Meeting commences at 7.30pm with Parish Council - Information and Reports

Meet your Councillors  
Annual Report by the Chairman  
Planning - Annual Report  
Finance - Annual Report  
Grants for the Community Groups

### Hot Topics for 2025-2026 - Updates available

Traffic Matters including  
Speedwatch, Civil Parking Enforcement, 20mph scheme and more.

Future Housing Developments

River Granta - Chalk Stream Preservation Project.

Highlights from 2024-2025

Refreshments available



## Recognition for Stagecoach East

STAGECOACH East is celebrating being shortlisted for two prestigious awards for its work in helping to tackle violence against women and girls locally. Cambridgeshire's biggest bus operator has been shortlisted for the Collaboration Award and also the Bus Centre of Excellence Innovation of the Year Award. These awards are amongst the most important awards in the transport. The winners will be announced on 4<sup>th</sup> June at the Royal Lancaster Hotel on Hyde Park in London.



The short listings are based on Buses and Businesses Against Abuse (BAA), a unique partnership between Stagecoach East, the Cambridgeshire Constabulary, and the Cambridge and Peterborough Rape Crisis Centre, to tackle Violence Against Women and Girls throughout Bedfordshire, Cambridgeshire, and wherever Stagecoach East buses run.

East's buses are officially places of refuge for people fearing that they will be subject to abuse or assault, with signage on each bus to show the fact. Find out more about BAA at <https://www.cambs.police.uk/policy-forces/cambridgeshire-constabulary/areas/campaigns/campaigns/businesses-against-abuse/>

Darren Roe, Managing Director of Stagecoach East, said: 'I am absolutely delighted to have been shortlisted twice for such a prestigious, national awards scheme. Alongside our outstanding partners, our team have worked extremely hard to make a real difference to the lives of women and girls locally. BAA is very important to us, all of our new drivers are trained in the scheme, and all of our existing drivers receive training annually. We now have many examples of where that training has been put into practice, and we are proud to be able to say that our buses are safe-spaces for everyone.'

Stephen Kielty

## 'Not The Eurovision Song Contest' Annual Quiz, Saturday 17 May

THE annual Linton quiz night, 'Not The Eurovision Song Contest' Quiz, is back again on its traditional date: the evening of The Eurovision Song Contest. This year that is Saturday, 17<sup>th</sup> May. Once more, it will be hosted in the Free Church Hall on Horn Lane.

Proceedings start at 7.00pm and include a fish & chip (or alternatively chicken or veggie burger) supper. Tickets are £15.00 per person (to include the supper). All participants can also bring along whatever refreshments of their own choice they may wish to have. Any surplus made on the evening will be donated to the Beacon Youth Trust who provide youth work in the Linton area.

Teams should be of around 8 people. If you can't get a team, you can still take part and join a team on the night. If you want to participate in what is always an evening of riotous fun and entertainment (and a quiz) then please email the Quiz Master, Steve Munday, on [Munday5@aol.com](mailto:Munday5@aol.com). Please confirm your food choice for the evening when you do this. Payment is on the night, but tickets must be reserved.

Steve Munday, Chair of trustees, Beacon Youth Trust

## Hildersham Baroque Concert

OUR next concert at Hildersham Church is on Thursday 19<sup>th</sup> June at 7.30pm when Ashley Solomon – Baroque Flute and Steven Devine – Harpsichord bring us a programme celebrating *JS Bach and his Sons*.

We are very lucky to have two such gifted performers. Ashley is a Fellow of both the Royal Academy and the Royal College of Music, London. He has a successful international career as a soloist and is director of the baroque ensemble Florilegium. Steven also enjoys an international career as a soloist as well as conducting and directing many baroque groups including the Orchestra of the Age of Enlightenment. Tickets are £20 and can be obtained from <https://www.eventbrite.co.uk/e/1322767305619?aff=oddtcreator> or by contacting Athene Hunt: [huntcam2015@gmail.com](mailto:huntcam2015@gmail.com) or by using the QR code.

This concert is in support of the Friends of Holy Trinity, Hildersham



Athene Hunt

## Linton Flower Festival 'Our Linton'

THE Flower Festival is fast approaching (6<sup>th</sup>, 7<sup>th</sup>, 8<sup>th</sup> June), but there is still time to register if you represent a group or organisation and would like to put together a flower arrangement or display in the church on the theme of *Our Linton*. This theme gives plenty of scope! Nanette Blackmore, Verger at St. Mary's, is writing to many groups in the village, but if you have not received a letter and wish to participate, do please contact Nanette at [nanette.blackmore@stmmaryslinton.org.uk](mailto:nanette.blackmore@stmmaryslinton.org.uk) or 07493 407857. Our regular flower arrangers will also be contributing displays in the church.

The church will be open to view the displays over the weekend. There is no charge for entrance, but you may wish to buy a programme. Look out for posters for exact timings. We are delighted that Linton Jazz will be performing on Sunday afternoon (8<sup>th</sup> June). There will also be a display in church of photos of Linton in years gone by, and we will be selling refreshments over the weekend. As an added attraction, we plan to display some of the panels of the Linton Community Quilt in church during the Flower Festival weekend.

We hope you will come and enjoy the displays. Funds raised go towards keeping our parish church in good order and open to all.

Anne Parry-Smith

**HADSTOCK VILLAGE FETE**  
**JUNE 14 2025, 2-5PM**

**DOG SHOW**  
**TUG OF WAR**  
**WELLY THROWING**  
**SHEEP SHEARING**  
**CHILDREN'S GAMES**

**SAFFRON ICE CREAM**  
**BEER TENT**  
**PIMMS**  
**BBO**  
**CREAM TEAS**

**AUCTION**  
**SILVER BAND**  
**LOCAL ARTISTS**  
**AND MUCH MORE**

## Headscratcher

Number 9

Odd numbers have hidden characteristics not always realised. For example, it is a well known condition (for some) that the numbers 3,5,7,9,11,13 etc ... are the difference of two square numbers e.g.  $x^2 - y^2$  where  $x$  and  $y$  are integers. For each number listed, what are the two square numbers? Generate a simple algebraic formula to show the relationship that will give the correct result. Try checking your formula using number 51.

Aspasia

## David Parr - The Man Who Painted His House

DISCOVER the story of David Parr, a Cambridge-born, working-class Victorian artist who transformed his ordinary terraced house into an extraordinary hand-painted home.

In 1886, Parr bought a modest terraced house in Cambridge. Over 40 years, in his spare time, he meticulously decorated the interior with hand-painted Arts & Crafts schemes and adapted the space for his family. Preserved by relatives for generations, the house became publicly accessible when the David Parr House charity was established in 2014. It now offers a rare glimpse into the life and work of a skilled *art-workman*.

A new short film, screening at 7.30pm on 20<sup>th</sup> May at All Saints' Church on Jesus Lane in Cambridge, explores Parr's home, motivations and working life through archival material and contemporary footage. *The Man Who Painted His House*, produced by Dr Victoria Mills and directed by Lily Ford, was created in collaboration with David Parr House, its archive and collections. The film brings to life the story of Parr — an artist who worked for the renowned Cambridge decorating firm F. R. Leach & Sons, part of the Victorian Arts and Crafts Movement and associated with designers such as William Morris. Tickets can be booked via [davidparrhouse.org](http://davidparrhouse.org)

The house is open to visitors Thursdays, Fridays & Saturdays although booking is recommended. For group or society tours, contact: [info@davidparrhouse.org](mailto:info@davidparrhouse.org)

Holly O'Brien

## Balsham Singers' Concert

THE first concert in Balsham Singers' 30<sup>th</sup> anniversary year takes place on 17<sup>th</sup> May at 7.30pm in Holy Trinity Church, Balsham. The programme is varied, revisiting concerts gone by with music ancient and modern.

Tickets are available at Balsham and Great Abington Post Offices, and online at [ticketsource.co.uk/balshamsingers](http://ticketsource.co.uk/balshamsingers). Tickets £12, under 16's £1.

Like to join us? We are holding five singing for fun sessions starting on 22<sup>nd</sup> May. Just turn up and try us out, no booking, no commitment. £5 a session, all five for £20. In Balsham Sports Pavilion at 7.30pm from Thursday 22<sup>nd</sup> May.

Jo Stinton

## LINTON NEWS

Next publication: 2<sup>nd</sup> June 2025

Deadline for submissions: Wednesday 14<sup>th</sup> May

Editor: David Watts

[editor.linton.news@gmail.com](mailto:editor.linton.news@gmail.com)

Advertising Manager: Judith Rouse

[adverts.linton.news@gmail.com](mailto:adverts.linton.news@gmail.com)

Delivery Managers:

Chris & Jenny Murison

[delivery.linton.news@gmail.com](mailto:delivery.linton.news@gmail.com)

Call 01223 893619 for an audio version of the paper

May bin collection dates

Black: Wednesdays 7<sup>th</sup>, 21<sup>st</sup>

Blue: Wednesdays 14<sup>th</sup>, 28<sup>th</sup>

Green: Wednesday 14<sup>th</sup>, 28<sup>th</sup>

## Village Diary

A round up of dates from this edition

For entries, email: [diary.linton.news@gmail.com](mailto:diary.linton.news@gmail.com)  
Please check with organisers before attending weekly events

MAY		
Sun 4	Bartlow 3 Counties Walk	Bartlow
Mon 5	Abington Gardening Club, 7.30pm	Abington Institute
Tue 6	W.I., 7.30pm	Village Hall
Thu 8	Linton Roots, 6.00pm	Dog & Duck
Sat 10	Bourn Windmill Open Day, 2-4.30pm	Caxton Rd. Bourn
Sun 11	Bourn Windmill Open Day, 2-4.30pm	Caxton Rd. Bourn
Sun 11	Sip & Stitch, 2-4.30pm	St Mary's Pavilion
Tue 13	Camsight Meeting, 2pm	Chalklands Comm. Centre
Fri 16	Daylight Readers, 10.30 & 2.30pm	Library
Sat 17	FROGS River Fly Monitoring, 10-12pm	Linton Rec.
Sat 17	Christian Aid Coffee Morning 10-12pm	St Mary's Church
Sat 17	Plant Sale, 10.30-12pm	W Wickham Village Hall
Sat 17	Balsham Singers Concert, 7.30pm	Holy Trinity Church Balsham
Sun 18	FROGS Litter Pick, 10-12pm	Village Hall
Tue 20	Historical Society, 7.30pm	Village Hall
Thu 22	W.I. Group Meeting, 7.30pm	Village Hall
Thu 29	Ploughman's Lunch ACE, 12.30pm	Sports Pavilion
JUNE		
Tue 3	W.I., 7.30pm	Village Hall
WEEKLY		
Monday	Mini Movers, 10-11.30am	Cathodeon Centre
Tuesday	Rhyme/Duplo Club, 10-11am	Library
Tuesday	Knit and Natter, 2-4pm	Library
Wednesday	IT Club, 5-7pm	Library
	Lets Run Girls, 7pm	LVC
Thursday	Stay and Play, 10-11.30am	Cathodeon Centre
	Baby Group, 1-2.30pm	Cathodeon Centre
	Games Afternoon, 2-4pm	Library
Friday	Lego/Duplo Club, 11-12pm (1st 2nd & 4th Friday)	Library
	Badminton Club, 8-10pm	Comm. Sports Centre, LVC

## LINTON VILLAGE MOTORS

(situated in Great Abington opposite Granta Park)  
[www.lintonvillagemotors.co.uk](http://www.lintonvillagemotors.co.uk)

Tel: 01223 830550

- MOT testing
- All makes of vehicles serviced and repaired
- Tyres at competitive prices
- courtesy car provided
- Polite and friendly staff



Mon-Fri: 8.30am-5.30pm Sat: 8.30am-12.30pm

## ADMIRAL ESTATES

### LINTON AND CAMBRIDGE LETTINGS

• Family Run Business - Linton Specialists for 25 Years

• Refreshingly High Standards - Google Rated: 5 Star

★★★★★ Local Agent

• Experienced, Fully Regulated, Qualified & Compliant

Check Out Our Google Reviews: Cambridge Office or Local Linton Office.

If You Need a "TOP QUALITY LEVEL OF SERVICE" Why Not Call Us?

Call us Now: 01223 891227

[www.admiralestates.co.uk](http://www.admiralestates.co.uk)

## SOLON ELECTRICAL

— Domestic electrical specialists —



For all of your electrical needs



Call: 07848 681486



Email: [info@solonelectrical.co.uk](mailto:info@solonelectrical.co.uk)

**Cook Stars**  
Haverhill to Newmarket

Fun Cooking Classes for Children

Linton Village Hall  
Mondays 4pm- 5.15 pm  
(Term time only)

EVERYTHING provided!  
Craft activity plus a recipe card to take home!

AGES 2-11 yrs

Call Tanya 07712 160 620  
Email: [tanya@cookstars.co.uk](mailto:tanya@cookstars.co.uk)  
Book <https://finder.cookstarsfrance.co>

## Yoga with Karina



Stretch  
strengthen  
relax

Fully qualified World Yoga Alliance teacher  
Thursdays 18.30 to 19.30  
Saturdays 10.00 to 11.00  
Six sessions for £50 or £10 per session

At Hadstock Village Hall CB21 4PH  
(ample parking at the back of the hall, next to the church)

07794 189 679

[karina@karina.co.uk](mailto:karina@karina.co.uk)



• Qualified Body Control Pilates Teacher.

• Classes and 1-1 sessions

• Specialising in older and less able clients.

Contact Rachel 07905105081  
[Rachel@zigzagpilates.co.uk](mailto:Rachel@zigzagpilates.co.uk)  
[www.zigzagpilates.co.uk](http://www.zigzagpilates.co.uk)

## P.B MAINTENANCE HANDYMAN

GENERAL MAINTENANCE

FENCE, GATE REPAIR

SHEDS

SMALL CARPENTRY JOBS

SMALL PLUMBING JOBS

FLAT PACK ASSEMBLY

ODD JOBS

NO JOB TOO SMALL

[pb.maintenance@yahoo.co.uk](mailto:pb.maintenance@yahoo.co.uk)

Tel: Paul 07816310197

## HAVE YOU LOST YOUR MARKETING MOJO?



Get in contact & we can breathe life into your sales & marketing.

[brick-marketing.co.uk](http://brick-marketing.co.uk)

[natalie@brick-marketing.co.uk](mailto:natalie@brick-marketing.co.uk)

**MOPS HAIR SALON**

HAIR BY JO DENNY  
WOMEN | MEN | CHILDREN  
CUTTING & COLOURING

41 LINTON HIGH STREET  
(BEHIND BOSWELL'S BAKERY)  
t: 01223 893 285



## News from the Infants

DUE to a late Easter and the Linton News deadline, it is only the beginning of April as I write this! However, the weather would have you thinking it was mid-May and it seems set to continue for the first part of the break, so plenty of opportunity to enjoy the great outdoors and the lovely open spaces in Linton and the surrounding areas have.

Before we finished for Easter, Year 1 enjoyed an amazing trip to Legoland and Year 2 had a trip on the London Eye and the Shrek Experience! These trips really do help to inspire and engage the children and it is thanks to the PTFA that these trips can go ahead with minimal cost to our families. To support us and our PTFA, please do join us at our Summer Fair on Friday 13<sup>th</sup> June. This is always such a fun evening with inflatables, games, BBQ and bar!

We are starting to plan for those children joining us in September. If you have received the offer of a place and you haven't already done so, please could you contact the school office by email: [office@linton-inf.cambs.sch.uk](mailto:office@linton-inf.cambs.sch.uk) to accept or decline your place.

We would also like to invite parents to our New Parents Evening on Wednesday 14<sup>th</sup> May, 6pm-7pm. This is a chance for parents to meet the staff and learn more about the school and it would be lovely to meet you all! We do currently have space in all year groups in our school, if you know of someone who is looking for a school place, please do contact the school office for further information.

Kelly Harries

## News from the Heights

TO get our half term off to a fantastic start, we had a visit from the author Luke Temple. During his assembly, he spoke about his incredible books, starring the main character Felix Dashwood. Some of our pupils took part in the assembly, acting out some fantastic scenes from the stories. Luke spoke to the children about what it is like to be an author, telling us how long it takes to write a book and where he gets inspiration. He returned the next day to complete a book signing and it's been fabulous to hear the children reading and discussing these stories all over the school!



World Book Day 2025 started with a *Book and Breakfast* session where pupils could come along with their grown-ups to share a book of their choice and have a delicious croissant or two. Our brilliant children dressed up in their favourite character costumes and our wonderful staff came as awful villains!

Throughout the day the children enjoyed reading stories, making top Trump cards and writing biographies. Each child was invited to take part in the *Big Book Swap* where they were able to replace a well-loved book with something new. It was lovely to see the children enjoying and embracing reading. To continue our love of books, we celebrated with a Scholastic Book Fair. We made £268 for new library books which will be arriving on our shelves very shortly.

Caroline Webb

## The Marsh Mail

THE arts are fundamental to our curriculum offer at Linton Village College. We are fortunate to have a thriving Dance department led by Helen Frost. During the Spring term, LVC students benefited from a range of dance enrichment opportunities.



International Women's Day  
'Accelerate Action' dance performance.

We welcomed Oddey, a professional dancer from Flawless, a British street dance troupe, to lead our boys' day of dance. Twenty-five Year 8 boys participated. Oddey choreographed highly energetic Hip Hop pieces and gave an inspirational careers talk. The boys recently performed one of their dances in the Year 8 celebration assembly.

We also hosted a twilight event for local education leaders to celebrate *International Women's Day*. LVC students choreographed an insightful and thought-provoking dance based on this year's IWD theme: *Accelerate Action*.

Our annual dance show took place in March with the theme *Through the Decades*. It was a vibrant exploration of how dance has been shaped by the changing tides of music, fashion, and societal change. Over a hundred students from all year groups performed in the show. Our technical team of students worked alongside Blueshed Technical Company to programme and operate the lighting and sound.

GCSE and BTEC Dance pupils from across Anglian Learning came together recently to participate in a highly innovative workshop with the renowned James Cousins Company. The pupils worked collaboratively on a variety of choreography and performance techniques.

LVC has recently been named as an Arts Award Champion Centre by Trinity College in recognition of our commitment to delivering the nationally recognised Arts Award qualifications.

Helena Marsh

## Library News for May

THE first week of May is National Hedgerow Week, so pop in to find out more and join in the fun.

Would you, or someone you know, like the Library at Home Service? This is free, designed for customers who can't visit a library due to illness, disability, or caregiving duties. There are no reservation charges or overdue fees. A vetted volunteer visits about once a month, delivering library items selected to suit the customer's reading preferences. Most volunteers can also stay for a brief chat.

Are you aged between 12-18? Would you like to take part in our Summer Reading Challenge Volunteering Programme this summer? Call in for a chat and register online: [www.cambridgeshire.gov.uk/residents/libraries-leisure-culture/libraries/get-involved/volunteering-with-libraries](http://www.cambridgeshire.gov.uk/residents/libraries-leisure-culture/libraries/get-involved/volunteering-with-libraries)

Rhyme then Duplo: Tuesday mornings 10-11am for 0-4 years. We would love to see you and your little ones there!

Do you like reading stories aloud? We have a volunteer vacancy for story and rhyme time. Pop in if you're interested.

Lego/Duplo: Friday 10-11am, weekly (every 1<sup>st</sup>, 2<sup>nd</sup> & 4<sup>th</sup> Friday). Come along and entertain your 0-4 year old.

Games Afternoon: weekly, Thursday 2-4pm. Come and meet new people, board/card games provided or bring your favourite to share.

IT Drop In: every Wednesday 5-7pm, knowledgeable volunteers are here to offer help with Information Technology, including how to use the Addenbrookes MyChart patient management software.

Knit and Natter: every Tuesday, 2-4pm. Bring along any craft project you're working on.

Daylight Readers: our Book Groups meet at 10.30am and 2.30pm on Friday 16<sup>th</sup>.

Vicky Anandraj and Ann King  
Community Library Assistants

Opening hours: Tuesday 10am-5pm;  
Wednesday 4-7pm; Thursday 2-5pm;  
Friday 10am-5pm; Saturday 10am-1pm

## Sessions Available at the Chestnut Playgroup

**Chestnut  
Playgroup**  
Linton

If you are looking for term-time childcare for your 2-4 year old, Chestnut Playgroup has morning, lunchtime and afternoon sessions available from September 2025 onwards.

In our friendly preschool setting, children learn through play under the supervision of qualified staff. We offer stimulating indoor and outdoor play facilities and activities, including a large garden space. Our opening hours are 9.00am to 2.30pm, Monday to Friday during term-time.

We are based in the Cathodeon Centre, next to the library, in the centre of the village. We have close links with Linton Infant School, and aim to equip children with the basic skills needed in preparation for school.

Visit our website [www.chestnutplaygroup.org.uk](http://www.chestnutplaygroup.org.uk) for more information about the playgroup, funding links and resources, and information on how to register. Alternatively, you can contact our administrator via email on [adm.chestnutpg@gmail.com](mailto:adm.chestnutpg@gmail.com) to book a visit or register your child.

We look forward to hearing from you.

The Chestnut Playgroup Team

THE DOG & DUCK  
63 HIGH ST, LINTON  
01223 890349

LIVE JAZZ - FIRST SUNDAY EVERY MONTH

\*2 MEALS FOR £20 OFFER\*

ALL DAY WEDNESDAY  
ALL DAY THURSDAY  
LUNCH TIME FRIDAY

HAPPY HOUR  
WED - FRI  
3PM - 6PM

[WWW.DOGANDDUCKLINTON@GMAIL.COM](mailto:WWW.DOGANDDUCKLINTON@GMAIL.COM)  
FOR ALL INFORMATION

**Allstar Cleaning Ltd**  
[www.allstarcleaning.me.uk](http://www.allstarcleaning.me.uk)

Your Local, Professional, Carpet and Upholstery Technician Dean

16 years' experience

Package to suit every level: Basic, Pet Treatment or Carpet Protector

**cleansmart**  
trained technician

**Carpet moth removal and prevention**  
**Upholstery and rug cleaning services**

Contact Dean on 01223 654652 or [info@allstarcleaning.me.uk](mailto:info@allstarcleaning.me.uk) to make an appointment.

Allstar Cleaning, 14 Hillway, Linton, CB21 4JE

[Lintoncrown@yahoo.com](mailto:Lintoncrown@yahoo.com) [www.crownatlinton.co.uk](http://www.crownatlinton.co.uk)

**The Crown Inn**

**Monday** - Kitchen, Now Open!

**Tuesday** - Steak Night £12

**Wednesday** - Sausage & Mash £7.50

**Thursday** - Fish & Chips £9.50

**Friday** - Burger Night £11

Visit us at, 11 High Street, Linton, Cambridge - 01223 891 759

**Westlakes**  
PAINTING & DECORATING

Interior & Exterior

Mobile:  
**07917890752**

[adam\\_westlake@hotmail.com](mailto:adam_westlake@hotmail.com)

**LINTON PAVING COMPANY**

YOUR LOCAL LANDSCAPING  
BLOCK PAVING & PATIO  
SPECIALIST.

**PROPERTY MAINTENANCE**  
Int/Ext Painting, General Repairs  
FRIENDLY SERVICE.  
FREE QUOTATIONS  
Tel: Andre Jacobs

**Mob:**  
**07765 594398**  
**Office:**  
**01440 702498**

**A J Pest Control Ltd**

Local Professional Service  
Member of NPTA  
Domestic/Commercial/Agricultural  
Experts in all areas of pest control

Mice, Rats, Wasps, Bees, Hornets, Moles, Moths, Ants,  
Bed Bugs, Fleas, Flies, Squirrels, Birds, Woodworm.

**Tel: 01799 542 505 Mobile: 07855478824**  
**E-mail: [info@ajpestcontrol.com](mailto:info@ajpestcontrol.com) [www.ajpestcontrol.co.uk](http://www.ajpestcontrol.co.uk)**

**Bentens**

Accountants and Tax Advisors

Abbey House, 51 High Street  
Saffron Walden

01799 523053 [www.bentens.co.uk](http://www.bentens.co.uk)



## Linton & District Historical Society

A POOR start in life, *The Tale of Two Brothers* encapsulated the rules, regulations and conditions of the Workhouse, and the generosity of wealthy families who were determined to help those most in need. Charmian Thompson from the Haverhill History Group gave us a talk about two brothers, born out of wedlock to Sarah Willis, a resident in the Kedington Workhouse: Christopher, born in 1857 and Frank (Francis), born in 1859. The 1861 census shows both boys were orphans, as Sarah had died that same year. The Gurteen family, wealthy factory owners appalled by such poverty, provided food, gifts and entertainment for residents during the festive season. Their factory provided 'jobs for life' for many residents in the Haverhill area, including our two brothers. Charmian had a fine example of a 'drabbet', a smock-type garment from Chauntry Mills, owned by the Gurteen family. A 'drabbet' was a simple pattern cut out in squares and put together, front and back alike. We were also shown workhouse food, and the recipe for gruel, a mainstay in all workhouses. Obviously, Linton Workhouse was discussed, including a visit to Linton by Constance Andrews in her Votes for Women campaign.

A truly fascinating evening, coupled with excellent documents, photos and newspaper extracts. For our final meeting of this season, we welcome Bill Wilsden on 20<sup>th</sup> May, for a talk on Ashdon Windmill, starting 7.30pm, Linton Village Hall.

For further details, please email [ldhscambs@gmail.com](mailto:ldhscambs@gmail.com) or phone 01223 893915 or 01223 678835.

Margaret Creek

## Hundred Parishes Society

A BARN is essential for a working farm, to store produce, tools and machinery and to house livestock. The Hundred Parishes has many fine examples of ancient barns which are still in use today, albeit sometimes for a purpose not envisaged when they were built. Some have been converted into homes while others have quite varied new uses.

In 1994, Thorley church purchased a dilapidated 16th-century barn which, following restoration, opened for community use as St Barnabas Centre. At Duddenhoe End, the thatched Hamlet Church started life as a barn.

Ashdon and Westmill village halls both began life as barns in the 17th century. Great Bardfield and Great Saling each have an ancient barn that has been converted into a retail outlet with café, respectively The Blue Egg and Timbers.

In Chrishall, the Red Cow pub offers accommodation in the adjacent 500-year-old thatched barn.

In Little Easton, the Countess of Warwick converted one of her barns into the Barn Theatre. It was used by many famous performers of the early 1900s and still occasionally serves that purpose, on other days being part of a tea room and events venue called Little Easton Manor.

In Great Bardfield, a Grade-I listed, 16th-century brick barn at Great Lodge now serves as the Anne of Cleves Barn wedding venue.

In Widdington, Grade I-listed Priors Hall Barn is a fine example of a medieval barn, dating from the 14th century and now owned by English Heritage. It is said that 400 oak trees were used in its construction. The large doors on either side could be opened for threshing, with the draught blowing the husks away from the grain. Priors Hall Barn is free to visit, open at weekends from April to September.

Ken McDonald, Secretary



Interior and exterior of Priors Hall Barn in Widdington

## Linton W.I.

OUR speaker at the April meeting was Birgitta Laurent, Recycling Coordinator at Greater Cambridge Shared Waste. She showed us a couple of short films which followed the progress of the contents of our blue and green bins. Contents of the blue bin were sorted by machine and hand, so it is important to make sure items are rinsed. Some members had brought along items which they were not sure could be recycled in the blue bin. Birgitta advised most items could, with the exception of black plastic bags and black food trays. Also, crisp packets should be returned to a local supermarket. She advised us not to put old clothes, shoes and textiles in the black bin but to take them to a clothing bank as, amongst other things, worn out shoes and even bras are turned into aggregate. Our speaker on 6<sup>th</sup> May is Kevin Boardman who will be telling us about life in a medieval village. New members welcome, guests £5.00. On Thursday 22<sup>nd</sup> May, we are hosting a group meeting with Abington and Balsham W.I.s. Our speaker will be Neil Callan talking about *The History of English Spoons*.

Elizabeth Cox

## Linton Camsight VIPs

IN April, we had a very jolly and informative gathering when Adrian Cosgrave, our Equipment Manager, came to our meeting to update us with what is newly available at Camsight. Adrian brought along various new gadgets and pieces of equipment, and also some which have been used for some time and have been updated. He gave advice, and demonstrations on how to use them. Our members very much appreciated being able to see them working, and available to buy at very similar prices to the internet. Our meeting ended with our afternoon tea and raffle.



Adrian demonstrating new equipment

The next meeting will be at 2.00pm on Tuesday, 13<sup>th</sup> May, at the Chalklands Community Hall, when we will be doing armchair exercises and hearing how to keep safe, fit and healthy with Sarah McCarthy, a Falls Prevention Health Advisor.

Our aim is to help people stay as independent as they can in their own homes, and if possible to increase their enjoyment of life. If you would like any further information about our group, please contact us at the Cambridge office on 01223 420033, the number below.

Linton Camsight VIPs

The Cambridgeshire charity for people of all ages with sight loss.

Jean Mannion 01223 893595

## Big Village Litter Pick

EVERYONE is welcome to join volunteers from Linton FROG (Friends of the River Granta) and the Parish Council for the next litter pick, Sunday May 18<sup>th</sup>, 10.00am–12.00pm, starting at Linton Village Hall on Coles Lane.

All equipment is provided: grabbers, bags; hi-vis jackets, and gloves. Children must be accompanied by a responsible adult. Bring your bags back for sorting by 11.30am.

Refreshments provided, courtesy of the Parish Council. It's more fun than you'd think and strangely satisfying! Will you be the one to find the weirdest piece of rubbish?

Love Linton and help keep it tidy!

Linton Parish Council

## Defibrillator Training Thursday 29th May Linton Village Hall

From 7.00pm  
Refreshments Provided

**Save A Life**



**Free to attend.**

Please book your place through the  
Parish Council Office

01223 891 001

[enquiries@linton-pc.gov.uk](mailto:enquiries@linton-pc.gov.uk)

- 24 hour emergency service
- Boiler breakdown and servicing
- Boiler upgrade



## KA PLUMBING & HEATING

Office: 01223 890554  
Mobile: 07890 576608  
[kaplumbingheating@hotmail.co.uk](mailto:kaplumbingheating@hotmail.co.uk)



Interior/Exterior Decorating  
Fencing, Guttering  
Turfing, Garden Clearance  
Lawn & Hedge Cutting  
Decking & Patio Cleaning  
Patios & Driveways  
Call on  
(01223) 892889  
or 07973 294946  
No job too small...



**VERTICAL, ROLLER AND  
VENETIAN BLINDS  
SUPPLIED AND FITTED  
FREE QUOTATIONS  
FREE HOME VISIT**

**TEXT ONLY  
07774168833**

or email [colin@capriblinds.co.uk](mailto:colin@capriblinds.co.uk)

ALL BLINDS ARE MADE IN ENGLAND  
- FAST LOCAL SERVICE

Visit [capriblinds.co.uk](http://capriblinds.co.uk)



A friendly and inspiring  
workshop and studio.  
Expert tutors offering a  
diverse array of dynamic,  
engaging creative courses.



Make time for Making!  
Claim your creativity it's  
good for you!

6 Lintech Court, Linton  
[www.cambridgemakers.org](http://www.cambridgemakers.org)



A local family run business with  
over 30 years' experience in the  
trade.

All enquiries welcome with a free  
quotation on all jobs.

All aspects of scaffold undertaken;  
no job too small.

Contact Martin on:  
Tel: 01223 892145  
Mobile: 07970348182  
[palmerssc scaffolding@outlook.com](mailto:palmerssc scaffolding@outlook.com)

*The flowers that bloom in the spring ...tra la*

April 22<sup>nd</sup> to June 7<sup>th</sup> 2025  
Opening hours 10:00 – 5:00  
Wednesdays to Saturdays

Diana Catchpole plus Anna Alcock,  
Jim Anderson, Julia Ball, Denise Hoyle,  
Clare Padfield, Charles Rennie Macintosh  
plus Vintage Herbals

94 High Street, Linton, Cambridgeshire CB21 4JT [www.galleryabove.co.uk](http://www.galleryabove.co.uk)  
T: 01223 894899 M: 07909 981827 E: [rosiewellings@aol.com](mailto:rosiewellings@aol.com)

**PSH  
Electrical  
Services**

Rewires, New builds, Extra  
lights, Extra sockets, Repair  
works, Garden lighting,  
Showers  
Registered NIC EIC  
domestic installer  
email  
[pshelectrical27@gmail.com](mailto:pshelectrical27@gmail.com)  
telephone 07867980738

**Move well! Live well!**

Hi! I'm Helen. I love keeping  
movement fun to enjoy a great  
quality of life. Come and try my  
friendly Pilates classes to:

- ★ Keep strong and mobile with  
physio based exercises
- ★ Help prevent back pain by  
developing stable core  
muscles
- ★ Improve posture & balance

Group classes in Linton & 1 to 1 classes

07454942577 Facebook [pilateswithhr](https://www.facebook.com/pilateswithhr)  
[pilateswithhr@gmail.com](mailto:pilateswithhr@gmail.com)

Australian Physiotherapy & Pilates Institute  
Network Instructor

**Thinking about  
care options for  
your mother or father?**

- They're struggling to cope, but don't want to move to a care home.
- What not talk to them about live-in care in their own home?
- A unique blend of care, companionship and housekeeping.
- Helping them maintain their freedom, independence and dignity.
- Generally costs less than residential care, especially for couples.
- Why not talk to your local award-winning live-in care specialists?

For further information  
Phone us on: 0800 411 8638  
or email: [support@chesterfordhomecare.co.uk](mailto:support@chesterfordhomecare.co.uk)

**Chesterford**  
Caring with head and heart





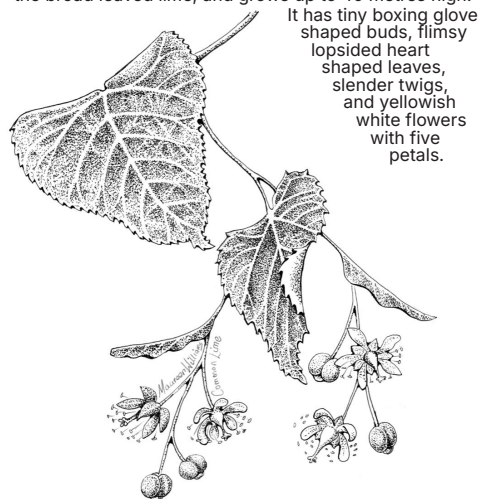
# Country Matters

Text by Oriel O'Loughlin, illustrations by Maureen Williams

## Linton Limes

BEN has spent what seems like endless Monday afternoons trying to tidy up the base of more than 30 sprouting lime trees in the churchyard, returning with cramp in his hands, thinking there must be a better way than with a pair of secateurs.

Time to look at the lime tree, or more particularly, the Common Lime, *Tilia x Europaea*, where the x means it is a hybrid. The fact it is a hybrid means it grows faster than both the parent species, namely the small lime and the broad leaved lime, and grows up to 40 metres high.



It is a hermaphrodite, meaning the male and female reproductive organs are on the same flower. It is native, and is widespread in urban areas, churchyards and parks in England and Wales, but not in Scotland. The oldest one in the UK is at Westonbirt Arboretum, and is around 2000 years old and has been coppiced regularly over the centuries. Coppiced lime makes hop poles and bean sticks, even Morris dancing sticks. It is soft and light and easy to turn. It is also used for piano keys as it doesn't warp. The bark was stripped off and used for making rope. Grinling Gibbons made lime famous with his 17th and 18th century lime woodcarvings. Up the road there are some enormous limes at Wandlebury – recognisable by their straightness and tendency, as mentioned above, to sprout near to the trunk. Likewise, Saffron Walden Common is edged by huge limes. Fine examples of pleached limes are to be seen in all their glory at Chippenham Park Gardens near Mildenhall.

Lime trees cause the sticky stuff that drops onto pavements and cars. The reason for this is the mass of aphids that feed on lime leaves. They just exude stickiness. A variety of caterpillars eat the soft leaves, and in turn these are eaten by hoverflies, birds and ladybirds. Bees are greatly attracted to the flowers. The flowers produce large amounts of nectar, which ferments quickly and can often lead to bees becoming intoxicated. If you see bees lying on the ground by the trees with their legs in the air, you now know why.

Some of the most famous limes are in Berlin, where they are called Linden. Inspired by the wide Paris boulevards, Unter den Linden was first planted in 1690, running East/West through Berlin. All the grand buildings are on the avenue, including the Brandenburg Gate. Strauss wrote a famous waltz called Unter Den Linden. In the last days of WW2, all the trees were cut down for firewood, but were replanted in the 1950s. The limes live on.

## FROG Summer Activities

LINTON Friends of the River Granta (FROG) is hosting nature activities over this summer for adults and children, where the residents of Linton and the surrounding area can get closely involved with nature. The sessions have been kindly sponsored by the Linton Co-op Community Fund and are free to participants.

Events over the next six months include:

- moth trapping and identification;
- bat walk;
- butterfly/bumblebee identification walk;
- willow weaving workshop.

We start with a riverfly monitoring session on Saturday, 17<sup>th</sup> May from 10.00am to 12.00 noon, meeting on Linton Rec. near the white footbridge. The Granta is a rare chalk stream. FROG aims to protect and enhance it, including taking part in the *Riverfly Monitoring Initiative*. Riverflies are invertebrates that spend most of their life cycle in a river, stream or lake. They are at the heart of the freshwater ecosystem and a key indicator of the river's health. Our trained volunteers will sample the river and you can be involved in looking at and identifying the riverfly species with magnifying glasses and a digital microscope.

FROG is a volunteer group running litter picks, conservation and citizen science monitoring tasks, and events to promote a love of our natural world. Everyone is welcome to join, no previous experience is required. We have a committee, funding/support



from RiverCare, Linton Parish Council, The Co-operative, The Riverfly Partnership and Cam Valley Forum, and a membership of over 80 people. If you're interested, please contact us at [lintonfrog@gmail.com](mailto:lintonfrog@gmail.com).

Jonathan Silverman

## Here Comes the sun!

NOW the Sun has decided to brighten our Spring gardens, all thoughts in the West Wickham and District Garden Club are turning to the Garden Club's Summer outings and meetings.

Members and non-members are all welcome to our most popular event of the year: the Plant Sale on 17<sup>th</sup> May at 10.30 to 12.00 at West Wickham Village Hall.

Anyone generous enough to bring seedlings and plants for sale (or cakes for the tea stall), please bring your (labelled) pots between 9.00am and 10.00am, or deliver plants to Janet Morris at 21 High Street from Monday 12<sup>th</sup>. If anyone would like plant labels or pots, again, Janet can help you! \* As always, there will be tea and cake, and this year we are accepting card payments.

This year's Summer garden visits are to Buster's Cottage, Duxford on 16<sup>th</sup> June at

6.30pm (£10) and Farm Lodge, Hildersham on 21<sup>st</sup> July at 6.30pm (£7.50). Both fees include refreshments. We are collecting members' names for these events now. \*\*

From 17<sup>th</sup> May, membership (to renew in September) is only £5, so if you're itching to join us now might be the time!

We look forward to seeing you at the Plant Fair and thank everybody in advance for your fantastic support.

Please contact:

\* Plant sale: Janet Morris, 01223 290863, [jmmorris@jmmorris.plus.com](mailto:jmmorris@jmmorris.plus.com)  
\*\* Summer visits: Indi Liepa, 01223 291320, [ifliepa@gmail.com](mailto:ifliepa@gmail.com)  
Club information: Sue Boase, 07716 401646, [wwdgc@westwickham.org](mailto:wwdgc@westwickham.org)

Sally Collins

**PLANT SALE**  
Saturday 17 May  
10:30-12:00  
West Wickham Village Hall  
flowers shrubs vegetables herbs  
FRIENDLY EXPERT ADVICE  
ALL WELCOME

## Growing Plans for June

LINTON's plans are growing for Great Big Green Week from 7<sup>th</sup> to 15<sup>th</sup> June to celebrate our natural environment. As part of this national event, Linton Roots and Friends of the River Granta (FROG) are preparing events, from mapping our green spaces, to moth trapping and a showing of the local documentary, Fugolburna.

We'd love to hear your ideas too! Do you belong to a Linton school, group or club? Let us know if you'd like to add an environmental/nature theme to your meeting in June, or if you have an idea for an eco-activity. Get in touch to see how we can help.

If you would like to get involved, the next Linton Roots meeting is on Thursday 8<sup>th</sup> May, 6.00pm in the Dog and Duck snug. Do come and join us, or get in touch via [linton-roots@outlook.com](mailto:linton-roots@outlook.com)

Kirsten Newble

## RJ Fencing of Linton

Your local fencing company

- > New fencing and repairs
- > Hedgehog friendly fencing
- > No job too big or small
- > Free quotations and estimates
- > Landscaping services
- > Licensed waste carriers
- > Friendly professional service

Enquiries call

Jason 07719895149

[rjfencinglinton@gmail.com](mailto:rjfencinglinton@gmail.com)



@pcjconstruction

[www.pcjconstruction.co.uk](http://www.pcjconstruction.co.uk)

[info@pcjconstruction.co.uk](mailto:info@pcjconstruction.co.uk)

Ryan Greenwood - 01223 606022

- Extensions
- New Build
- Design and Build
- Kitchens
- Bathrooms
- Property Maintenance
- Refurbishing Windows
- Roofing
- Loft Conversions
- Heritage, Listed & Conservation
- Renovations/Alterations
- Driveways & Patios
- Ground Works

## KJL Roofing

All roofing repairs, lead-work, renewal of pitched or flat roofs

New guttering, repairs/unblocking  
Free estimates before any work commenced  
25 years + Experience

Tel: 01223 892542

Mob: 07958 618440

## A & R PLASTERING

All aspects of plastering undertaken:

Plasterboarding  
Rendering  
No job too small  
30+ years experience  
Free estimates

Tel: 01223890228

Mobile: 0774 8627920

## ProClean

'Your Complete Cleaning Solution'

- \*Carpet Cleaning \*Rugs \*Stain Removal
- \*Car Valeting \*Caravans \*Motor Homes
- \*Upholstery Cleaning \*Stain Protection
- \*Floor Cleaning / Scrubbing / Sealing / Polishing
- \*Pressure Washing of Patios Paths & Driveways
- \*Domestic Cleaning \* Top Ups & One Off Cleaning
- \*Gutter / Fascia Cleaning
- \*Contract Office Cleaning (Flexible Options)

TEL: 890433 Mob: 0777 375 8355  
74 Bartlow Rd, Linton, Cambridgeshire, CB21 4LY

**G. DYE & SONS**  
GENERAL BUILDERS,  
GROUNDWORK & MAINTENANCE,  
CONSERVATORIES & UPVC WINDOWS, KITCHEN & BATHROOM REFITS

ALSO INTERIOR & EXTERIOR DECORATING  
REFERENCES AVAILABLE

For enquiries please call  
Mobile:

07961 342887

Tel: 01223 892089

[georgedye738@btconnect.com](mailto:georgedye738@btconnect.com)



Free Estimates

## etcetera



Vintage & Collectibles

The Garden Room, rear of 94 High Street, Linton, CB21 4 JT  
opening hours 10.00-5.00  
Wednesdays-Saturdays

NOW OPEN



**MATT LAWRENCE BUILDING SERVICES**

- BRICKWORK
- EXTENSIONS
- PATIOS
- FLINTWORK
- PLASTERING
- WALL & FLOOR TILING

07984 615289

[MATTLAWRENCEBUILDINGSERVICES@GMAIL.COM](mailto:MATTLAWRENCEBUILDINGSERVICES@GMAIL.COM)

## District and County Councillors' Report - April 2025

### Council Tax Fraud

Fraud officers have clawed back £360,000 in false claims for council tax discounts, with the money set to be invested back into public services across South Cambridgeshire. The money has been returned to District Council budgets after staff uncovered hundreds of false claims by comparing data records. Called the Cambridgeshire County Council Fraud Initiative, the project continues to identify single person discount fraud and error, since launching in July 2023. It works by comparing data held by the local authority with other information such as the electoral register or credit reference data. Where there is a debt identified, it is recovered through the normal Council Tax billing process, with the income used to fund public services. Data gathered as part of the initiative indicates that around two in 10 claims reviewed by the authority, were being claimed incorrectly.

### Local Government Reorganisation

An Extraordinary meeting of South Cambridgeshire District Council agreed to send a letter to the Local Government minister Jim McMahon clarifying that we are working productively with the other councils in Cambridgeshire to design new Unitary Councils. This will mean that the County Council is broken up and its responsibilities will go to either 2 or 3 new councils which will be amalgamations of the current district councils. They have until the autumn to submit the detail of the boundaries of these new authorities.

### Warmer Council Homes

More than £8 million in Government funding has been awarded to South Cambridgeshire District Council to improve the energy efficiency of Council homes. The idea is to upgrade thousands of social homes across the country which are currently below the standard of Energy Performance Certificate (EPC) C. Improvements to South Cambridgeshire's Council homes could include insulation, ventilation, heating controls, double glazing, solar panels, and heat pumps - cutting bills and tackling fuel poverty.

South Cambridgeshire District Council will now work to allocate funding to properties with priority given to those most in need of energy efficiency improvements. Council tenants will be contacted directly if their home is able to benefit - with the aim for the Council to have as many of its 5,500 properties above an EPC rating of C in the next four years.

The funding from the Department for Energy Security and Net Zero is part of the national Warm Homes Plan. A total of £8,280,376 is being provided for South Cambridgeshire under the latest wave of the Warm Homes: Social Housing Fund scheme. South Cambridgeshire District Council will contribute £10 million from its Housing Revenue Account - consisting of Council house rents - to the improvements too.

### Community Navigators service renewed

The renewal of a service which helps residents remain independent and stay living in their own communities has been approved by Cambridgeshire County Council's Adults and Health Committee.

'Community Navigators', which has been running since 2012, provides personalised support to older people, residents aged 18 and over with disabilities, and their carers. A dedicated team of staff and volunteers from Care Network, which currently runs the service on behalf of the council, connects individuals to services, activities, and interventions in their local communities.

The support provided includes informing people about, and referring them to, relevant activities and services; helping people access information to answer questions and enable them to do things for themselves; supporting people to access activities that enable them to remain independent, safe, and well and reaching out to communities to engage with people who may be eligible for Adult Social Care services.

Service users can choose to receive support either in the community, at home, or over the phone. Over the last three years, Community Navigators has received nearly 9,000 referrals via the NHS, community and voluntary sector, and the county council's adult social care service. A further two-year contract is due to start on 1 October. <https://care-network.org.uk/community-navigators/>

### Learning Disability Support

The Learning Disability Partnership (LDP), which has provided integrated health and social care support for adults with learning disabilities in Cambridgeshire, has been formally dissolved from 1 April 2025. Councillors are calling on local health partners to fully share information about the arrangements for NHS funded support from this month and to ensure complete continuity of care from the NHS for people currently receiving services, to match those commitments already made by the council.

The Council and the Cambridgeshire & Peterborough Integrated Care Board (ICB) are continuing discussions on how to work together to maintain services across the county. However, discussions are ongoing about payments owed for the services provided by the council, including historical debts. There still remains an opportunity to reach an agreement before entering formal legal mediation, and the council hopes for a constructive resolution that benefits all involved, particularly those who rely on these important services. County councillors have raised concerns about this service separation and the associated financial issues, which has been formally escalated as a corporate risk by the council. The council continues to press for a resolution.

### Empty Properties

During 2023/24 - 28 South Cambridgeshire properties that were not used and vacant were bought back into use by the District Council. A similar number of turnarounds is expected by the end of the current financial year. Anyone who is looking to turn an old, neglected property into a home may be able to save thousands of pounds in VAT on renovation costs - just by contacting South Cambridgeshire District Council's Empty Homes Officer.

Home maintenance and improvements are usually charged at the standard rate of 20% VAT. However, the Government offers a 5% VAT rate on renovations for properties that have been unoccupied for more than two years - but were lived in beforehand. Anyone who has recently purchased, or is about to buy, an empty property which meets these criteria simply needs to contact the Council. The Empty Homes Officer can then provide paperwork needed to confirm the house was unoccupied, triggering a substantial saving. To see if you qualify, email [env.health@scambs.gov.uk](mailto:env.health@scambs.gov.uk) and provide as much information as possible on the property you have recently purchased or are looking to purchase.

### Council Tax on empty homes

As part of other efforts to bring local empty homes back into use the Council Tax will be doubled on long-term

## Planning Applications

From 21<sup>st</sup> March to 16<sup>th</sup> April

25/01169/LBC Roof repairs. Installation of heritage rooflight. Relocate kitchen and bathroom. Replace timber windows and French doors to rear with flush casement slimline double glazed units. Build canopy over and relocate side gate. 108 High Street Linton Cambridgeshire CB21 4JT  
Validated: Tue 25<sup>th</sup> March 2025. Status: Awaiting decision

25/01129/HFUL Single storey side Extension, 12 Kingfisher Walk Linton Cambridgeshire CB21 4UA.  
Validated: Mon 24<sup>th</sup> March 2025. Status: Awaiting decision

vacant and second homes in the District. The aim is to encourage people to sell or rent their properties to tackle the national housing shortfall, which is particularly acute in South Cambridgeshire. Council estimates suggest there are around 2,640 empty homes in the district, and a further 360 second properties.

### Healthy Start Vouchers

Parents of children under the age of four years old are being encouraged to check if they are eligible for free Healthy Start vouchers to help buy food and milk. The Healthy Start vouchers are offered by the NHS to parents receiving certain benefits but are estimated to go unclaimed by more than a third (38%) of eligible parents in South Cambridgeshire. This results in almost £88,000 of unclaimed funds each year in the district, largely due to a lack of awareness of the scheme.

In our latest campaign to support residents with the cost of living, we have used our new and innovative IT package, called the Low-Income Family Tracker (LIFT), to identify 377 households who are likely to be eligible for Healthy Start vouchers. All these households have been contacted by letter and text where possible to encourage them to apply for Healthy Start vouchers if they have not done so already.

Parents are eligible for Healthy Start vouchers if they have a child under the age of four and are on certain benefits. If eligible, parents will receive a Healthy Start card that can be used in most UK supermarkets, similar to a debit card. The card will be pre-loaded with £8.50 a week for children aged under one, and £4.25 a week for children aged between one and four years old.

### New South Cambs website

Please take a look at the new SCDC website [www.scambs.gov.uk](http://www.scambs.gov.uk) which has lots of new features including localisation: people can put their postcode in and find information purely relevant to the area in which they live, such as their local councillors and the bin schedule, planning applications close by and any local events happening in their area.

### Local Plan Update

Development of the emerging Local Plan for the 2030s has been on hold for over a year due to uncertainties over water supply and transport provision. However, Greater Cambridge Shared Planning has announced that sufficient progress has been made to allow a draft Local Plan to be produced this year, for review by the council and for public consultation. There is a huge lead-up time in plan making and these are only steps in a very long process.

District Council – John Batchelor  
[johnbatchelor23@gmail.com](mailto:johnbatchelor23@gmail.com)

District and County Council – Henry Batchelor  
[henrybatchelor89@gmail.com](mailto:henrybatchelor89@gmail.com)

**Precision**  
Carpentry & Joinery

- Windows • Doors • Wardrobes • Cabinetry • Staircases
- Bespoke Joinery • Carpentry • Spraying & Finishing

[www.carpentryjoinery.co.uk](http://www.carpentryjoinery.co.uk)  
[precision@carpentryjoinery.co.uk](mailto:precision@carpentryjoinery.co.uk)  
James Tonry - 01440 761688

  @precisioncarpentryjoinery

**MADE IN BRITAIN**  **BRITISH WOODWORKING FEDERATION**

**THE AUDIOLOGY EXPERT**  
STAY CONNECTED TO LIFE

Everything we do is designed for your individual care

**Our Services:**

- \* Hearing Assessment
- \* Tinnitus Consultation
- \* Hearing Aids Accessories
- \* Ear Wax Removal
- \* Full Line Of Hearing Aids
- \* Follow Up Services

To schedule a consultation Phone: 01440 782 055  
Email: [enquiries@theaudiologyexpert.co.uk](mailto:enquiries@theaudiologyexpert.co.uk)  
[www.theaudiologyexpert.co.uk](http://www.theaudiologyexpert.co.uk)



**Dean Porter**

Independent Mortgage Broker for Linton and the surrounding villages  
Mortgage advice for all circumstances, call today to discuss your needs  
07876 170716  
[dean@exf-mortgages.co.uk](mailto:dean@exf-mortgages.co.uk)  
[www.excellencefinancial.co.uk](http://www.excellencefinancial.co.uk)

Excellence Financial is an appointed representative of The Right Mortgage Ltd which is authorised and regulated by the Financial Conduct Authority.  
Your home (or property) may be repossessed if you do not keep up repayments on your mortgage or any other debts secured on it.

**PLUMBLINE**  
PLUMBING AND HEATING ENGINEER  
PROFESSIONAL DOMESTIC PLUMBING SERVICE  
FRIENDLY AND RELIABLE SERVICE

Call John on  
**01223 893903**  
[supcik@talktalk.net](mailto:supcik@talktalk.net)

Fully Qualified and Insured  
City & Guilds  
No Job Too Small

  
**City & Guilds**

**TIM PHILLIPS & Co.**  
Accountants  
Established 1991

Independent, specialist service for:  
**Small Business • Self Assessment  
Personal Taxation**

Free initial consultation – no obligation  
**EASY, FREE PARKING**

Copley Hill Business Park, Cambridge Rd., Babraham  
Off A1307 between Wandlebury and Babraham  
**Tel: 01223 830044. [www.tpaccounts.co.uk](http://www.tpaccounts.co.uk)**

**YOU BEAUTY**  
CAMBRIDGE  
•  
**YOUR LOCAL BEAUTY SALON**

Check us out at  
5 Balsham Road, Linton  
Cambridge CB21 4LD  
[youbeautycambridge.co.uk](http://youbeautycambridge.co.uk)  
**01223 668400**

**NRS CARPETS**



HOME SELECTION  
FREE MEASURING & ESTIMATING  
All types of flooring available  
Tel: 01223 893634  
Mobile: 07885 173113



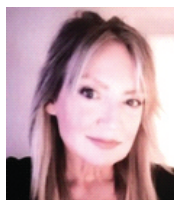
# Parish Council Matters

**LINTON**  
PARISH COUNCIL

Parish Council Matters is written,  
edited and published by the  
Parish Council with the support of  
the Linton News Team

## Help Available from Age UK

AS A charitable organisation, Age UK Cambridgeshire and Peterborough is extremely grateful for the continued support of Linton Parish Council and the grant afforded for 2025-2026 for the Community Warden Scheme.



Chrissy Sayer

Chrissy Sayer (pictured), the Linton Community Warden, works tirelessly supporting residents of Linton to live safely and independently in their own homes through daily contact (Monday to Friday), whether by telephone or in person, for a nominal weekly fee. She also offers light shopping, prescription collection and practical support e.g. arranging doctor's appointments, assisting in blue badge applications.

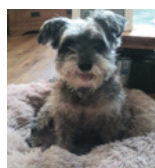
Above all, it is a bespoke service which is very much driven by the needs of the individual on the scheme. Chrissy is often described as a listener of the outside world, a navigating ear and a constant companion. Her aim is to help grow confidence and nurture independence, safe in the knowledge that someone is regularly checking in on your health and wellbeing. It can also be very reassuring for family members, who may not live locally, to know that there is another lifeline in place for their loved ones.

Chrissy makes a real difference. She has worked closely with one older person on the scheme, helping him chose a reclining chair as he was struggling to sleep in his own bed, due to mobility issues. Thanks to Chrissy, the older person now has a lifeline and a key safe making him feel safer in his own home. Further, Chrissy has signposted to the 'Helping Hands' transport service within Linton so the older person can attend medical appointments.

She has even extended her support to dog training and helped the older person to train his dog to sit, stay, leave and give his paw for treats! Ben (pictured) is now trained to go to his bed on command, a Christmas present gifted through Age UK Cambridgeshire and Peterborough.



Birthday Celebrations



Ben - sitting & staying!

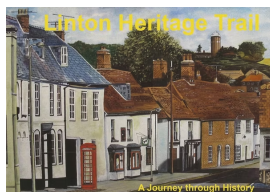
As quoted by the older person, "Chrissy has taught me a lot of things, helped me and has given me more confidence. Things are better now".

There are many more services you can access through Age UK Cambridgeshire and Peterborough. Our Handyperson Service offers a Home Checks Assessment by a Trusted Assessor, who can identify where there is a need for adaptations to make the home safer and easier to navigate e.g. fitting grab rails, banisters.

## The Linton Heritage Trail

THE LINTON Heritage Trail is a fascinating walk, approximately miles long, includes a tour of the older parts of Linton. The route passes the majority of Linton's 120 listed buildings and embraces the history of the village.

The original Heritage Trail project was the work of Garth Collard MBE, Michael Gee, Darryl Nantais, John Keeble and Enid Bald. It is a privilege to continue promoting the trail.



The Linton Heritage Trail Booklet

The booklet, which costs just £3.00, includes historical information, illustrations and clear directions. It has been updated and re-printed by the Linton Parish Council. All money raised by the sales of the guide is re-invested back into the scheme for the upkeep of the village notice boards and for associated design, printing and marketing costs.

The booklets are now available to purchase from the Parish Council, Jigsaw Bakery, Hockeyes Estate Agents and the Dog & Duck, Linton. Why not pick up a copy today and spend some time learning about the wonderful village we live in? Visit one of the venues listed above to be assured of a warm welcome.

Clerk

If you need any information and advice regarding benefits, pension credits, attendance allowance and so much more, the Information and Advice Service can support you. The team is trained to carry out a 'Benefits Check' so that you are secure in knowing that you are receiving the support you deserve.

If you know of a loved one that is being discharged from hospital, the Hospital Discharge Service can support in moving furniture, arranging for a key safe to be fitted and providing general wellbeing support whilst a care package is put in place.

In summary, Age UK Cambridgeshire and Peterborough is a charity which provides a wrap-around service supporting older people to age well. The continued support of Linton Parish Council means we can continue to help older residents in Linton to live safely and independently in their own homes. As an older person on the Community Warden Scheme quoted, "Thank you for all your help, thank you for visiting me and for all you do!"

Community Warden Service: 07931 852019

Handyperson Service: 01480 700205

Information & Advice: 0300 6669860

Hospital Discharge: 01354 691896

Sarah Lees - Age UK

## SLA for Beacon Youth Trust

THE BEACON Youth Trust is delighted to be able to confirm that a new Service Level Agreement has been signed with the Parish Council to support the delivery of quality youth work in Linton for the next three years. Linton Parish Council is providing significant funding so that the village can have good and regular youth work taking place and available for all young people between the ages of 10 and 18.

Beacon Youth Trust relies on funding from several partners to provide youth work in Linton. The biggest single funder is the Parish Council. In addition, both churches in the village (St Mary's and Linton Free Church) provide regular funding and a grant is regularly sought from the Anderson Trust. Some significant private donations also enable the work to be funded and Beacon Youth organises some of its own fund-raising events. All these funds put together mean that the youth workers can be employed (in partnership with Romsey Mill, based in Cambridge) and the costs of running the youth work can be met. We are very grateful to the Parish Council and all our other funders for enabling this important service to be provided in the village.

The main 'Drop In' sessions for youth of various ages tends to take place from mid afternoons until early evening evenings on Tuesdays and Wednesdays during the week. These sessions are open to all with no pre-booking required. A range of activities is provided but young people can also simply come along and have their own space and socialise as they wish. Alongside these general drop-in sessions (that are centred in the facility on the recreation ground), the youth workers work closely with the Village College and the Heights Junior School to be available at certain times there and to do some individual support work with identified students.

One early evening each week (currently Mondays, but previously Thursdays), a session is run for young people who are interested in exploring the Christian Faith. All are welcome to this weekly session. This part of the work is not funded by the Parish Council.

Out of term time, other activities are run including longer sessions at the youth centre in the recreation ground and trips for young people. These include day trips to such places as Thorpe Park as well as more local trips.

Young people in the village appear to appreciate the various activities that are available to them through the youth work. Significant numbers turn up to the regular activities and sign up for the trips. There are well over 100 young people in Linton who have participated in some form of regular activity in 2025. This is thus a crucial service for the village.

If anyone would like to know any further details about the youth work, then do contact either of the main youth workers involved on their work emails. If anyone thinks they might be interested in volunteering to help with any aspect of the work then that would be especially appreciated.

Gareth Williamson: gareth.williamson@romseymill.org  
Becky Campbell: becky.campbell@romseymill.org

Steve Munday, Chair of Trustees, Beacon Youth Trust  
Munday5@aol.com

## COOPER•BARNES

Multi Award winning, family run, accident repair centre at the Grip, with over 40 years experience.

Body and Accident Damage Repairs, Servicing, MOT's, Alloy refurb, Air-Con servicing. With 19 Manufacturer approvals your peace of mind is guaranteed.

Our brand new detailing bay is now open, offering valeting, paint correction, machine polishing and ceramic coatings, getting rid of swirls, reducing & eliminating scratches and giving your car that showroom shine.

Unit 4, The Grip Ind Est  
Linton  
CB21 4XN  
01223 880603  
repairs@cooperbarnes.co.uk



## West's Digging Services

west.dig@outlook.com  
07880654466

Offering a range of services from :

- Excavation
- Scraping / Clearing
- Levelling
- Trenching / Service Ducting / Drainage
- Tree stump and hedge removal
- Driveways and more

Public Liability CPCS Qualified Efficient

## The Studio

BARTLOW

FITNESS | YOGA | WELLNESS



thestudiobartlow.co.uk  
Three Hills Farm / Bartlow / CB21 4EN



Driveway Gates & Automation

Email: info@helionsforge.com

Phone: 01223 618253

## Linton Complementary Health Centre

2B Bartlow Road, Linton, CB21 4LY

- Acupuncture
- Shiatsu
- Massage
- Food Intolerance Testing

Telephone: 01223 891145

Email: enquiries@lintonhealth.co.uk



**CASTLESIDE**  
**ELECTRICAL**

castlesideelectrical@gmail.com

07795595856

Electrical installations  
Re-wiring and repairs  
Fault finding

Testing and inspection  
PAT testing  
New builds & Extensions

# Parish Council Minutes

**LINTON**  
PARISH COUNCIL

Parish Council Minutes is written,  
edited and published by the Parish  
Council with the support of the  
Linton News Team

Abbreviated minutes of the Linton Parish Council meeting held on Thursday 20<sup>th</sup> March 2025 at the Cathodeon Centre.

## Chairman's Comment.

The Chairman thanked the Clerk for the urgent remedial work in relation to the risk assessment at the Pavilion building.

## To approve the minutes of the Full Council meeting held on the 20<sup>th</sup> February 2025.

Cllr Smith proposed the minutes of the Full Council meeting held on Thursday 20<sup>th</sup> February 2025 be approved. Cllr Hill seconded. Agreed with one abstention.

## Clerk's Report.

The Clerk provided an update that the damaged cradle swing at the Recreation Ground had been replaced. Cllr Cieluch requested an update on the faulty MSID unit. The Clerk advised that the repair was in progress.

## External Meetings

Notification of the Quarterly Community Police meeting held on 26<sup>th</sup> February 2025.

Cllr Sanderson added that responses to the police survey are low and parishioners to be encouraged to complete it and that crime in Linton is not being reported which has resulted in village being classified as lower priority.

Notification of the meeting of representatives of the Parish Council and the Cathodeon Centre Trust on Friday 28<sup>th</sup> February 2025.

Cllr Smith gave an update following the meeting stating that the grassed area is in a poor state and that the trustees had been requested to send a request for remedial works to the Parish Council office.

## Consideration of the District and County Councillors Report for February 2025.

In addition to the written report the following points were added.

The Kingsway Solar Farm consultation had been sent out to neighbouring parishes. The Clerk confirmed that Linton Parish Council have not received this. Cllr Batchelor advised he would ensure this was sent through to Linton Parish Council.

A Civil Enforcement survey would be circulated shortly and LPC are invited to comment on the effectiveness of the programme. Concerns were raised that as Linton specifically had seen little improvement to the parking situation that a negative response may influence the decision to end the scheme. Cllr Batchelor advised that comments should reflect the situation but added that suggestions for improvement, especially relating to the frequency and specific times of visits, would be welcomed.

District Councillor John Batchelor advised that the 5-year land supply for SCDC has now been achieved following re-assessment and currently sits at 5.5%

## Planning

Consideration of the minutes from the Planning Meeting held on the 20<sup>th</sup> February 2025. Noted.

## Finance

Consideration of the approved minutes from the Finance Committee Meeting held on 23<sup>rd</sup> January 2024. Noted.

## RFO's Report.

The RFO advised that despite following up with Tomato Energy in relation to the street lighting no further information was available in time for the meeting.

## Quotes and Contracts

Consideration of the quotation received in relation to safety fencing at Leadwell Meadows.

Decision required.

Cllr Smith proposed a maximum budget £150.00 to procure a sign stating Danger – Deep Water and for the

installation of the same. Cllr Carl Cieluch seconded. All Agreed.

## Compliance (Policies and Procedures) & Risk

Consideration for the revised format of the Weekly Play Area Visual Checklist to support Quarterly Play Area Inspections. Decision required.

Cllr Gardner proposed the revised format of the Weekly Play Area Visual Checklist be agreed. Cllr Smith seconded. All Agreed.

## Traffic & Highways

Mobile Speed Indicator Device (MSID)

Notification of the data captured from the Mobile Speed Indicator Device (MSID) during January/February 2025. For Information. Noted.

Cllr Cieluch proposed that the Clerk provide a simplified version of the MSID report going forward. Cllr Mannassi seconded. All Agreed.

Consideration for the proposals for locations of communication cabinets for Virgin Media. Response required.

Valid concerns were raised in relation to the placement of the cabinets for Virgin Media. Cllr Smith proposed to object to the placement of the cabinet on Parsonage Way and for the Clerk contact Cambridgeshire County Council to raise the concerns about the reduction in width of the footpath and the negative impact on pedestrian use. Cllr Cox seconded. All Agreed.

## Market Square

Consideration for the Memorandum of Understanding for the planting and maintenance of the flower border adjacent to 32 High Street. Action required.

Cllr Gardner proposed the Memorandum of Understanding for the planting and maintenance of the flower border adjacent to 32 High Street be agreed and signed by the Chairman. Cllr Cox seconded. All Agreed. Consideration for the action required in relation to the bin placement on the Market Square by the two properties abutting the Market Square. Decision required.

Cllr Cieluch proposed the Clerk write to the owners of 38 High Street, Linton requiring the removal of the bins and the bin store by the 30<sup>th</sup> of April 2025. Cllr Sanderson seconded. All Agreed.

Consideration for the action required in relation to the bin placement on the Market Square by businesses situated near the Market Square. Decision required.

Cllr Gardner proposed the Clerk write to the businesses situated by the Market Square requiring removal of all bins by the 30<sup>th</sup> of April 2025. Cllr Smith seconded. All Agreed.

Consideration for the action required in relation to the bin placement on the Market Square by privately owned properties situated near the Market Square. Decision required.

Cllr Smith proposed the Clerk write to the privately owned property owners situated near the Market Square requiring the removal of any bins by the 30<sup>th</sup> of April 2025. Cllr Carl Cieluch seconded. All Agreed.

## Defibrillators & Bleed Kits

Consideration for the Memorandum of Understanding for the installation of a solar powered defibrillator cabinet on land owned by Finchams Close Ltd. Action required. Cllr Smith proposed the Chairman sign the Memorandum of Understanding for the installation of a solar powered defibrillator cabinet on land owned by Finchams Close Ltd. Cllr Sanderson seconded. All Agreed.

Consideration for the request for a budget for the hire of the Village Hall on 29<sup>th</sup> May 2025 and for the provision of refreshments for the Defibrillator training session. Decision required.

Cllr Cox proposed a maximum budget of £100.00 be delegated to the Clerk for the provision of refreshments 2025. Cllr Sanderson seconded. All Agreed.

## Meadow Recreation Ground

Notification of Health & Safety concerns raised by the LVCC in relation to mole tunnels on the Recreation Ground and offer of remedial works. Correspondence item 60 refers. Decision required.

Cllr Gardner proposed to accept the offer of remedial works to be conducted in relation to the mole tunnels on the Recreation Ground with a maximum budget of £465.00 excl. VAT. Cllr Cieluch seconded. All Agreed.

## Cemetery

Consideration for the proposed Cemetery Regulations to apply from 1<sup>st</sup> April 2025. Decision required.

Cllr Sanderson proposed the Cemetery Regulations be adopted with the removal of all references to the scattering of ashes and the specific inclusion that scattering of ashes is not permitted to apply from 1<sup>st</sup> April 2025. Cllr Smith seconded. All Agreed.

Consideration for changes to the Cemetery Fees from to apply from 1<sup>st</sup> April 2025. Decision required.

Cllr Smith proposed the removal of additional fees for Saturday burials and clarification of the discretionary charge to be applied for the transfer of GOERB to apply from 1<sup>st</sup> April 2025. Cllr Cox seconded. All Agreed.

## Youth

### Beacon Youth Trust (BYT)

Notification of acceptance of the SLA by the Beacon Youth Trust due to commence 1<sup>st</sup> April 2025-31<sup>st</sup> March 2028 and LPC signing of the agreement. Action required. Cllr Sanderson proposed the Chairman sign the SLA 2025-2028 for the Beacon Youth Trust. Cllr Cox seconded. All Agreed. The Chairman signed the SLA 2025-2028.

Consideration for the request from Anglian Water for the provision of supplies to complete the exterior decoration of the Youth Hut. Decision required.

Cllr Smith proposed a maximum budget of £400.00 excl. VAT to purchase paint and equipment for the external decoration of the Youth Hut. Cllr Sanderson seconded. All Agreed.

It was specified that the paint colour must blend with the natural surroundings.

## Correspondence items not pertaining to an agenda item.

Notification of LPC comments for the South Cambridgeshire District Council (SCDC) public consultation on the four-day week. Decision required.

Cllr Kell proposed the comments collated by the office be submitted to the South Cambridgeshire District Council (SCDC) public consultation on the four-day week. Cllr Gardner seconded. All Agreed.

## Matters for Future Consideration.

The following items were raised.

Water tap at the Cemetery.

Market Square – update on the requirement to remove all bins and bin storage.

Full Minutes and written reports are available on the Linton Parish Council website.

Clerk

The Village Hall, Coles Lane, Linton,  
Cambridge CB21 4JS Tel: 891001

Clerk to the council – Jenny Seaward

Email: enquiries@linton-pc.gov.uk

Website: www.lintoncambridgeshire-pc.gov.uk

Facebook: www.facebook.com/lintonpc

Office open: Monday - Friday 9am - noon.

By Appointment Only

Full Council meetings are held at the Cathodeon Centre, commencing at 7.30pm on the third Thursday of the month.



## McKenzie & Haywards Garage LTD

**MOT by appointment while you wait**  
**Servicing, Collection & Delivery Service**

Unit 3 & 4, Lintech Court  
The Grip Industrial Estate  
Linton, Cambs  
CB21 4XN

Tel : 01223 894140  
Fax : 01223 890035  
mhgarage@btconnect.com

## Singing Lessons

**Sarah Rosewell**  
BA (Hons) Music

Individual singing lessons  
available for all ages  
and abilities

Whether towards exams or  
purely for pleasure

\* CRB Checked  
\* Based in Linton  
For more information contact:  
Sarah on 01223 894861

Email:  
sarahrosewell@hotmail.com



Local, reliable Arborist based in  
West Wickham. Able to deal  
with all tree surgery works.  
Fully insured and qualified.

rob@abctree.co.uk  
www.abctree.co.uk

07919343321



**3 OFFICES IN 3 COUNTIES**

- Residential Conveyancing
- Matrimonial & Family Law
- Wills, Tax Planning & Probate
- Employment Law
- Dispute Resolution
- Commercial Property
- Trusts

We have the experts to assist you when  
you really need us.

Saffron Walden, Essex 01799 523441  
Haverhill, Suffolk 01440 702485  
Sawston, Cambs 01223 832939

enquiries@adams-harrison.co.uk  
www.adams-harrison.co.uk

## ClearTax & ACCOUNTING LTD

Quality, friendly accounting  
services and taxation advice.

Sole trader and small  
company specialist.  
Free initial consultation.

▼ We have a new address ▼

Unit 1, The Old Stables, Yole Farm,  
Linton Road, Balsham, CB21 4HB.

**01223 772326**

jenine@cleartax.co.uk  
www.cleartax.co.uk

## GLENWOOD BOLTS & SCREWS LTD

www.glenwoodbolts.co.uk



**SUPPLIERS OF QUALITY  
FASTENERS, FIXINGS &  
SILVERLINE TOOLS**

Unit 2 Lintech Court  
The Grip Industrial Estate, Linton

Cambridge, CB21 4XN

Tel: 01223 892095 / 893931

Fax: 01223 894122

## HOCKEYS

ESTABLISHED 1885



Welcome from  
your neighbours!

For a free valuation call us on 01223 789966

47 High Street, Linton, CB21 4HS ✉ linton@hockeys.co.uk

Our new office  
in Linton is  
NOW OPEN!