



Door to door: A collection of festive wreaths photographed and compiled by Sarah Hurcum. Sarah started taking the shots two years ago on walks around Linton. Is your door among those featured here? If so, well done!

## Top gong for Major John



Another medal for the collection, John with his MBE

CONGRATULATIONS to Linton resident John Kell, who was given an MBE in November. The ceremony was in Great St Mary's Church, where the Lord Lieutenant of Cambridgeshire, Mrs Julie Spence, presided over the ceremony and presented him with the medal. The award was bestowed for his work in automotive and engineering technology. Currently working with the Department for International Trade, John is a leading expert in the automotive and advanced manufacturing fields. He has been involved in several global projects involving defence, aerospace and transport, having previously worked as a business development manager at TWI in Abington. John is also a Major in the Cambridgeshire Army Cadet Force and received his award in dress uniform. The ACF is a youth organisation that offers training and experience around a military training theme, whilst at the same time promoting achievement, discipline, and good citizenship. "Part of volunteering is about 'giving something back' and being a valued member of a team," John said. "I have found my role with the ACF a worthwhile use of spare time which makes a real difference to the lives of young people."

Linton News Team

## Balsham Road to close for 18 months

(Or two weeks, depending on whom you ask)

BEWILDERMENT turned to anger last month when Cambridge County Council appeared to announce plans to close Balsham road until 2023. In a notice published on both their website and in daily newspapers, the authority stated that the B1052 would be shut "from the 1<sup>st</sup> of December 2021, until these works have finished OR on 31<sup>st</sup> May 2023." The strangely worded and ambiguous announcement was picked

up by residents and posted on the *Linton Community Board* Facebook Page, where it quickly attracted the attention of incredulous villagers. "Ridiculous! How are they allowed to close a main road into the village for this long?" one resident commented. Speculation turned on the new housing developments in the village, and whether the closure could be due to access roads for these sites.

Thankfully, the Parish Council were on top of the situation, and after contacting their colleagues at the County, were able to reassure villagers. "Just to confirm, the work is for the resurfacing of the carriageway only, and is estimated to take between one and two weeks," said Jenny Seaward, Covering Clark at LPC. It is unknown where the 18 month figure came from.

Linton News Team

## Eco champions at the Heights

WITH the exact outcomes of the United Nations Climate Change Conference yet to be fully realised, one group of inspired Linton Heights pupils are doing their bit to protect the planet and prevent catastrophic global warming. The newly created Eco-Council is a team of students formed to help ensure that the school is playing its part in tackling the crisis. Clare Ball, Eco Co-ordinator at the junior school, praised the group's enthusiasm and motivation. Clare said: "Without wasting any time, they got to work carrying out an environmental review of the school, answering questions about ten different topics including biodiversity, global citizenship and energy." In forming the council, Linton Heights hopes to achieve the status of *Eco-School*, a nationally recognised 'Green Flag' accreditation administered by Keep Britain Tidy and the Foundation for Environmental Education. "We looked at the outcomes of the review and have decided to focus on waste, litter and transport for this academic year. We are hoping that our hard work will pay off and that we will be awarded the Green Flag in the summer term." Already, the Eco-Council have plans to introduce a more sustainable approach to waste management, and intend to take part in *Walk to School Week* next May. You might even see some of them helping with the community litter pick organised by Linton FROG (Friends of the River Granta) in early December. Clare urges readers to watch this space for future updates.



Passionate and driven: the newly formed Eco-Council

Linton News Team  
Photo: Clare Ball



## Readers write...

Dear Editor,

I attach a photograph of the birthplace of my Grandmother Elizabeth Levens in Linton. She was born on the 2<sup>nd</sup> of August 1878. I have no other information. Her married name was Eastman. Gran had about five siblings. I would be so grateful if through your newspaper you could show the photo and somebody recognises it and lets me know any history. Thank you for any help you can give.

Jennie Wright



Dear Editor,

It's almost Christingle time! Christingle is a joyful celebration when the local community can come together and support the work of The Children's Society with vulnerable young people in the UK. Everyone is welcome to the St Mary's Christingle service on Sunday 12<sup>th</sup> December starting at 3pm. Bring the whole family to join in the fun! More information from Sarah cafm@stmaryslinton.org.uk

Sarah Thorne  
Children and Families Minister  
St. Mary's Church, Linton

Dear Editor,

I'd like to say thank you to everyone who came to the big switch on of our Christmas light display in Fincham's Close. We would like to remind everyone that the display will be on every day 4:30pm till 10pm with the back garden open till 8pm. Throughout December we will be doing competitions via our Facebook page. Follow here for all the latest updates [www.facebook.com/CoopersChristmasLights](http://www.facebook.com/CoopersChristmasLights). The naughty elf will be hidden in a new spot every day so a great idea for the kids to find it each time. Donations can be put in the donation pot at the display or online [www.gofundme.com](http://www.gofundme.com) and search for 'Cooper Christmas lights.' 100% of donations will be going to the Norfolk Zipper Club who support Papworth hospital.

Jordan Cooper  
Fincham's Close

**Something to say?  
Someone to thank?**  
[editor.linton.news@gmail.com](mailto:editor.linton.news@gmail.com)

## Winter arrives at Gardening Club



At the Club's November meeting, Joe Sharman from Monksilver Nursery in Cottenham gave an entertaining and informative talk on grasses and grass-like plants. He brought along many samples of both drought-tolerant and damp-loving plants for us to look at, and explained how and where to best grow them.

In our own garden, the growing season is winding down. Deciduous leaves have taken on their autumn colours and will linger until the frost and wind disperses them. Berries of pyracantha, holly and rowan glint red and orange in the damp sunlight like jewels and will feed many a bird when winter chills blow in. The dahlia tubers have been lifted to be dried off for overwintering in banana boxes insulated by shredded paper. Colourful spring bulbs have been planted in their place. We carry out the minimum of winter pruning in the shrub borders, to leave cover for bugs which will provide foraging for



our smaller garden birds through the winter.

At the Club's next meeting at 7.30pm on Tuesday 14<sup>th</sup> December in the Village Hall, club members will be showing photos of gardens they have visited.

Due to Covid precautions we will not be serving mulled wine and nibbles this year, but the hall will still be full of the usual Christmas spirit.

Annual membership is £10 and the visitor's fee is £2 per meeting.

We look forward to seeing you there. Best wishes for the festive season.

Jim & Helen, Linton Gardening Club  
893577

## Christmas crafting with Creative Communities



THE Creative Communities group held their first *Crafty Cafe* with a Christmassy feel, including learning how to make crocheted icicles, fabric heart hangers, cards and gift tags. We hope to hold more of these cafes to support and celebrate creativity and wellbeing around Linton in 2022.

If you would like to hear more and join the group or have skills to share, please contact us via

[lintoncommunityhelp@gmail.com](mailto:lintoncommunityhelp@gmail.com)



Top: Groups wore masks and were socially distanced

Above: Christmas cards and tags

Below: Fabulous fabric hearts



**MALLYON & DONALDSON**  
MASTERS OF MODERN AND TRADITIONAL BUILDING

[contact@mallyondonaldson.com](mailto:contact@mallyondonaldson.com)  
01223 290030  
07885 367112

Extensions - Alterations - Repairs - Hard Landscaping

YOU BEAUTY  
CAMBRIDGE  
YOUR LOCAL  
BEAUTY SALON

Check us out at  
5 Balsham Road, Linton  
Cambridge CB21 4LD  
[youbeautycambridge.co.uk](http://youbeautycambridge.co.uk)  
01223 668400

Cambridge  
Art Makers

A friendly and inspiring  
workshop and studio.  
Expert tutors offering a  
diverse array of dynamic,  
engaging creative courses.



Make time for Making!  
Claim your creativity it's  
good for you!

6 Lintech Court, Linton  
[www.cambridgemakers.org](http://www.cambridgemakers.org)

[lintonerown@yahoo.com](mailto:lintonerown@yahoo.com)

[www.erownatlinton.co.uk](http://www.erownatlinton.co.uk)

**The Crown Inn**  
Christmas Party Menu 2021

Our Christmas party menu includes 2 or 3 courses plus coffee, mints and a Christmas cracker. The menu will be available both lunchtimes and evenings in our conservatory restaurant.



Luncheon set menu for 3 courses	£27.50
Luncheon set menu for 2 courses	£22.50
Evening set menu for 3 courses	£29.50
Evening set menu for 2 courses	£25.50

11, High Street, Linton, Cambs.  
01223 891759

**LINTON VILLAGE MOTORS**  
(situated in Great Abington opposite Granta Park)  
[www.lintonvillagemotors.co.uk](http://www.lintonvillagemotors.co.uk)

Tel: 01223 830550

- MOT testing
- All makes of vehicles serviced and repaired
- Tyres at competitive prices
- courtesy car provided
- Polite and friendly staff



Mon-Fri: 8.30am-5.30pm Sat: 8.30am-12.30pm



**McKenzie & Haywards  
Garage LTD**

**MOT by appointment while you wait  
Servicing, Collection & Delivery Service**

Unit 3 & 4, Lintech Court  
The Grip Industrial Estate  
Linton, Cambs  
CB21 4XN

Tel : 01223 894140  
Fax : 01223 890035  
[mhgarage@btconnect.com](mailto:mhgarage@btconnect.com)

**PJB  
Maintenance**

No job too small  
Ground work, Patios, Floor  
& Wall Tiling, Fencing, Roof  
repairs, Demolition  
CPSC Licence  
Free Estimates

Call **Peter Belson** on  
Mob: 07799 183308  
Tel: 01223 668475

**HAIR BY JO DENNY**  
WOMEN | MEN | CHILDREN  
CUTTING & COLOURING

41 LINTON HIGH STREET  
(BEHIND BOSWELL'S BAKERY)  
t: 01223 893 285

**MOPS HAIR SALON**



## Keeping up to date with the library



IT'S always great to see you at Linton Library. For everyone's safety and comfort we continue to manage the numbers of people inside the library at any one time, and encourage you to wear a face-covering and maintain social distancing.

Help us to find Christmas. Cambridgeshire Libraries are holding a Treasure Hunt for children and families in December – use your mobile phone to scan a barcode and get a video clue. Find all of our lost items and you'll get a certificate. If you don't have a mobile phone, don't worry: there's a paper version too.

We continuously add to our regular book stock, so please drop in and see what's new. Find festive favourites, or absorbing books to help you escape the Christmas season if that's what you'd prefer.

Staff will be taking a break over Christmas: we will be closed from 24<sup>th</sup> December at 1pm until 4<sup>th</sup> January at 10am.

Please note that loan periods make allowances for when the library is closed. Of course you can continue to download free eBooks, eAudiobooks, eMagazines and eNewspapers at any time to your home device – please check our webpage Library online - Cambridgeshire County Council to find out how.

Thank you so much to everyone who has visited and supported the library this year. Wishing all of our customers a restful and happy Christmas with good wishes for the New Year, we are looking forward to welcoming you in 2022.

Lindsay Healy and Ann King,

Community Library Assistants, Linton Library

Linton Library opening hours:

Tuesday 10am-5pm; Wednesday 4pm-7pm;

Thursday 2pm-5pm; Friday 10am-5pm; Saturday 10am-1pm

Customer Services (regular office hours): 0345 045 5225

## From the Friends of St Mary's

IT IS nearly two years since the Friends have been able to hold an event due to the pandemic. Now, however, we are able to announce that there will be the traditional New Year Coffee Morning on Saturday January 8<sup>th</sup>. It will be held in the church from 10.30am to 12noon. Admission will be £4 (children free) to include mince pies and savouries. There will also be a raffle and a Bring & Buy stall - an opportunity to recycle unwanted Christmas presents, and a display of proposed Friends activities for the forthcoming year. All profits go to The Friends for repairs and improvements to St Mary's Church.

All are welcome to the Coffee Morning, a sociable get-together at a rather low time of the year. The celebrations of Christmas are over and spring still seems a long time away.

The committee would like to thank all members of the Friends for their support during the past difficult two years, and we look forward to seeing you on January 8<sup>th</sup>.

Margaret Cox  
Secretary Tel. 891231

## Shed back open, kettle on



Classes are free, and open to all

AFTER a long period of closure due to the pandemic, Arthurs Shed is now up and running again and warmly welcomes Linton News readers to attend their sessions, which are free of charge and open to the public.

These include Astronomy, Card Making and Paper Crafts and are run by skilled volunteers. The Shed is wheelchair accessible, and they encourage you to share any adaptations you may require to support your needs in advance, both physical and emotional. To find out more, please head to [www.arhc.org.uk/open-to-all/arthurs-shed/](http://www.arhc.org.uk/open-to-all/arthurs-shed/) or call the number below.

Hannah Touhey  
[Arthurs.shed@arhc.org.uk](mailto:Arthurs.shed@arhc.org.uk)  
675871

## News from St Mary's

AS the season for remembering comes to a close, we now enter into a period of preparation and looking forward to Christmas. Last year you will remember Advent and Christmas were both very low-key events, hampered by Covid restrictions from being able to meet in groups of more than six. So, we hope and pray that this year life will be very different and that we will be able to celebrate the birth of Christ in full. Advent is an anticipatory season looking forward to Christmas, marked each Sunday in church by lighting an Advent candle, and no doubt at home by children of all ages (myself included) eagerly opening the windows of their Advent calendars. But why not consider this year adding a spiritual dimension to your Advent: every weekday until 24<sup>th</sup> December there will be a 15-minute meditation service in St Mary's starting at 8 am. Do come for one or some or all of these 'Advent Promise' sessions. As we draw closer to Christmas Day we shall be holding a special Messy Church Christingle service on Sunday 12<sup>th</sup> December aimed at young children, and then a week later a candlelit Christmas Carol service on Sunday 19<sup>th</sup> December suitable for all the family. Details of Advent and Christmas events are on our church website but here is a selection of dates for your diary:  
28<sup>th</sup> November Advent Sunday service 6 pm  
12<sup>th</sup> December Messy Christingle service 3 pm  
19<sup>th</sup> December Christmas Carol service 6 pm  
24<sup>th</sup> December Crib Service 4 pm; Midnight Mass 11 pm  
25<sup>th</sup> December Christmas Day: Holy Communion 8 am; Family Eucharist 10 am

St Mary's wishes all Linton News readers a very Happy Christmas.

Reverend Michael Wilcockson  
[curate@stmaryslinton.org.uk](mailto:curate@stmaryslinton.org.uk)

THE LINTON NEWS Next publication: 3<sup>rd</sup> January 2022  
DEADLINE FOR NEWS ITEMS:  
Wednesday 8<sup>th</sup> December

### ADVERTISING

Requests for adverts can be sent to:  
Judith Rouse: [adverts.linton.news@gmail.com](mailto:adverts.linton.news@gmail.com)

### ITEMS FOR THE EDITOR

Should be sent to Jack Glossop  
[editor.linton.news@gmail.com](mailto:editor.linton.news@gmail.com)

### FOR DISTRIBUTION QUERIES CONTACT:

Delivery managers: Jenny and Chris Murison, 660408, or 07905 384741 [delivery.linton.news@gmail.com](mailto:delivery.linton.news@gmail.com)

Call 893619 for an audio version of the Linton News

### December bin collection dates (Linton)

Black bins: Monday 6<sup>th</sup> and Monday 20<sup>th</sup>  
Blue bins: Monday 13<sup>th</sup> and Wednesday 29<sup>th</sup>  
Green bins: Monday 13<sup>th</sup>

## A big thank you from the infant school

DECEMBER has arrived and as I write this, although things in school are not quite "normal", they are closer than last year. However, we all know how quickly the situation can change! This in no way dampens the enthusiasm and hard work that the staff team put in, to make sure Christmas is a magical time for the children. We have plans for a Christmas lunch, the tree will be going up soon and the children have all been sent home with a tree decoration to decorate and return, to add some sparkle to our tree. We are also hoping for a visit from Santa, but he is always so busy at this time of year!

Our tours for children due to join us in September 2022 have happened, again under strange circumstances with small groups and mask wearing, but it was lovely to meet some of our potential new parents and to show off our school again.

The School Council are still raising funds for both the school and other charities. We held a Jeans 4 Genes day raising just over £150, and for Children In Need we were all invited to wear our pyjamas to school in return for a donation.

As the year ends, I feel it is a good time to reflect. Yes, it has been tricky and different, but the whole school community has been fantastic and I would like to thank this opportunity to thank the staff, children and parents for all the hard work they have put in over the past year. I would also like to thank the local community for their support and help.

All that is left for me to say now is on behalf of all the staff here, we wish you a very Merry Christmas and a restful New Year.

Kelly Harries,

## Christmas @ The Dog & Duck

63 High Street, Linton TEL: 01223 890349

Live Festive Jazz  
Sunday 5<sup>th</sup> December

Gin Night

Discounted Gin, Live Music  
with Robin & Neil  
Thursday 16<sup>th</sup> December



New Years Eve  
Open 'Till Late

Find Out More On Our Website  
[www.DogandDuck-Linton.co.uk](http://www.DogandDuck-Linton.co.uk)

### A J Pest Control Ltd

Local Professional Service  
Member of NPTA  
Domestic/Commercial/Agricultural  
Experts in all areas of pest control



Mice, Rats, Wasps, Bees, Hornets, Moles, Moths, Ants,  
Bed Bugs, Fleas, Flies, Squirrels, Birds, Woodworm.

Tel: 01799 542 505 Mobile: 07855478824  
E-mail: [info@ajpestcontrol.com](mailto:info@ajpestcontrol.com) [www.ajpestcontrol.co.uk](http://www.ajpestcontrol.co.uk)

## LZD DESIGN

Graphic designer  
& mixed media artist  
[david@lzd.design](http://david@lzd.design)  
07743 598 544  
logos, ads, web, print



WWW.LZD.DESIGN

### tidyaway

Professional Decluttering  
and Organising Service

Do you need to create more space?

Do your wardrobes or cupboards  
need organising?

I can help in all areas of the home

Contact Andrea  
07534 301978  
[www.tidyaway.co.uk](http://www.tidyaway.co.uk)

## WHAT'S ON

High Street  
Linton  
CB21 4JT



### December..

Friday 3 <sup>rd</sup>	Karaoke	
Saturday 4 <sup>th</sup>	Live music – Legends of Rock Tribute	8pm
Wednesday 8 <sup>th</sup>	Xmas Rock 'n' Roll Bingo	7:30pm
Saturday 11 <sup>th</sup>	Live music – Mark Salmon	8pm
Thursday 16 <sup>th</sup>	Porky's Turkey Tuck In	7pm
Saturday 18 <sup>th</sup>	Live Music – White Room	8pm
Wednesday 22 <sup>nd</sup>	Xmas Quiz	7:30pm
Xmas Eve	Jamie Humphries	8pm
New Year's Eve	Aaron Coates Duet (ticket only)	9:30pm

Tuesday - Sunday (except Xmas Eve & New Years Eve) Happy Kebab  
Burger van from 6pm

## LINTON PAVING COMPANY

YOUR LOCAL LANDSCAPING  
BLOCK PAVING & PATIO  
SPECIALIST.  
PROPERTY MAINTENANCE  
Int/Ext Painting, General Repairs  
FRIENDLY SERVICE.  
FREE QUOTATIONS  
Tel: Andre Jacobs

Mob: 07765 594398  
Office: 01440 702498



## Neil Claxton

Painting & Decorating  
Interior/Exterior  
Rooms Emulsioned  
from £120  
FREE ESTIMATES

Tel: 01223 893487  
Mobile: 07724073045

E-mail: [n.claxton925@btinternet.com](mailto:n.claxton925@btinternet.com)

## ProClean

'Your Complete Cleaning Solution'

\*Carpet Cleaning \*Rugs \*Stain Removal  
\*Car Valeting \*Caravans \*Motor Homes  
\*Upholstery Cleaning \*Stain Protection  
\*Floor Cleaning / Scrubbing / Sealing / Polishing  
\*Pressure Washing of Patios Paths & Driveways  
\*Domestic Cleaning \* Top Ups & One Off Cleaning  
\*Gutter / Fascia Cleaning

\*Contract Office Cleaning (Flexible Options)

TEL: 890433 Mob: 0777 375 8355  
74 Bartlow Rd, Linton, Cambridge, CB21 4LY

## De-Salis Wealth Management

Associate Partner Practice of St. James's Place Wealth Management

SPECIALIST ADVICE ON

Personal Financial Planning – Pension Planning  
Investment Planning – Protection Planning

Ian Cross DipPFS

01223 892821

E-mail: [ian.cross@sjpp.co.uk](mailto:ian.cross@sjpp.co.uk) Website: [www.de-saliswealth.co.uk](http://www.de-saliswealth.co.uk)

De-Salis House, 6 Hillway, Linton, Cambridge, CB21 4JE

The Partner Practice is an Appointed Representative of and represents only St. James's Place Wealth Management plc (which is authorised and regulated by the Financial Conduct Authority) for the purpose of advising solely on the group's wealth management products and services, more details of which are set out on the group's website [www.sjp.co.uk/products](http://www.sjp.co.uk/products). The 'St. James's Place Partnership' and the titles 'Partner' and 'Partner Practice' are marketing terms used to describe St. James's Place representatives



## Libraries after lockdown



**HOW many libraries are there in Cambridgeshire?**, asked our speaker, Anna McMahon from Cambridge Library. The answer is 353, plus 12 community access points and a mobile library serving 85 villages. Anybody who lives, works or studies in Cambridgeshire, including babies, can have a ticket and there are 102,000 members.

Bestsellers can be got pretty quickly after they come out and books can be reserved if not on the shelves. Most of us were not aware of all the services the library offers, apart from borrowing books. Ebooks can be downloaded at no charge, as well as newspapers and magazines via the Cambridge website, free use of computers and photocopier, information on local groups, research your ancestry, renew your bus pass, free WiFi if you don't want to work from home, talks, and storytime for children. There is a reading group and they do a monthly newsletter you can sign up for.

Libraries were shut from March to August 2020, although the reading group continued on Zoom. Staff spent a lot of time cleaning, checked other libraries' websites to see what

they were doing, and got ready for partial opening in August, when you could book and collect at the door. In July this year, they opened fully.

After lockdown, Anna now has a new job, Library Development Officer. Some of her duties include: organising cultural events and exhibitions, digitising old films, and a county-wide survey on what the library means to you. When she became aware how isolated some people were, she checked to see if they could be reached on Zoom. She is also trying to promote ways for libraries to become more environmentally friendly, taking books to housebound people and borrowing books without a staffed library. The question of fines for overdue books is under discussion. There followed a lively question and answer session. Anna urged us to join the library, use it, and tell our friends.

Our meeting on 7<sup>th</sup> December is for members only and will be a fish and chip supper. A speaker for January 5<sup>th</sup> meeting has yet to be confirmed and may take place on Zoom. Anybody interested in joining us, look out for the poster on the parish notice boards in early January. You will be welcome.

Sally Proberts, 891021

## Festive greenery traditions



Yew berries appear at this time of year

AS 2021 enters its final month, we anticipate seasonal celebrations to brighten the shortest days of the year. The ancient tradition of decking our houses with garlands of fresh green holly branches reminds us of the continuity of life, bringing us cheer when the days are short.

On reaching the age of 20, female holly trees bear red berries on branches covered with prickly, shiny green leaves which can be cut to make decorative wreaths. Such wreaths featured in midwinter Celtic and Roman celebrations as symbols of good fortune, a tradition that continues thanks to the intervention of a local man, William Winstanley (1628-1698).

During the Commonwealth, which lasted from 1649 to 1660, the Puritans under Oliver Cromwell proclaimed that it was illegal to celebrate Christmas, banning frivolities and feasting on mince pies. Winstanley, who lived in Quendon, believed in celebrating Christmas as a time for sharing joy, fun and good fortune with others. After the restoration of the monarchy in 1660, using his influence as a writer, Winstanley encouraged

a return to the seasonal merrymaking we still enjoy today.

Holly trees were frequently planted near houses to ward off a lightning strike. Interestingly, scientific research has revealed its spiky leaves can act as miniature lightning conductors! Holly also grows in hedges or as a shrub in woods where its berries provide nourishment for blackbirds, thrushes and wood mice. Its dense branches provide secure nesting sites. Deer and rabbits will eat its nutritious leaves.

Today, many homeowners plant variegated forms of holly to provide interest in their gardens, and they can select a mixture of foliage to make seasonal decorations.

Yew is another evergreen with red coloured fruits (loved by birds and squirrels), but as its leaves are poisonous it is less suitable for indoor decorations.

Tricia Moxey, Trustee  
The Hundred Parishes Society  
[www.hundredparishes.org.uk](http://www.hundredparishes.org.uk)

## Action packed times for Cadets

AT time of writing we are finishing preparations for the annual Remembrance Day parades and services where we will take part in both Castle Camps and Linton. After sending just two representatives last year, we are very much looking forward to a full parade with the Union flag and squadron standard on display.

The squadron will be at full strength now all cadets are back from camp. Cpl Vella-cott was at RAF Leeming for a week-long camp and had a great time:

"Going on camp to RAF Leeming was a valuable insight into life in the Royal Air Force. I met friends for life and we were an excellent team. Activities included visiting the Hawk T1s at 100 Sqn, fieldcraft with 609 Auxiliary, and a drill competition with the station Warrant Officer. Perhaps the highlight was talking with Air Vice-Marshal Richard Maddison, who commands training in the RAF."

And Cpl Newell was on the recent adventure training camp:

"2021 Windermere Adventure Training Camp was the best camp I've ever been on with the RAF Air Cadets. The camp showed me parts of the country that I never thought

I'd see. The activities ranged from mountain biking to Ghyll Scrambling and was perfectly planned and executed. The camp pushed everyone to do their best at all the activities."

We still have space on the squadron for new joiners. If you are minimum aged 12 and in year eight, now is the perfect time to join our squadron.

Bradley Wright  
Pilot Officer RAFAC  
training.2523@rafac.mod.

## Learn something new?

WE are coming to the end of our courses for this term and would like to thank you for your support. We are delighted that we were successful in getting most of our courses running after such a strange 18 months.

Spring term courses start the week commencing 17<sup>th</sup> January and we have Saturday workshops planned for 12<sup>th</sup> March. If you would like to enrol, or see what courses we are offering, please visit our website [www.sawstonadulted.org](http://www.sawstonadulted.org), email [community@sawstonvc.org](mailto:community@sawstonvc.org) or telephone 712424.

If there is a particular course you would like us to offer, or a course you could offer to teach, we would love to hear from you. We look forward to welcoming you to the college in January.  
Adult Learning at Sawston Village College



2523 Linton Air Cadets

## A & R PLASTERING

All aspects of plastering undertaken:  
Plasterboarding  
Rendering  
No job too small  
30+ years experience  
Free estimates

Tel: 01223890228  
Mobile: 0774 8627920

## DESIGNER DRAPES

Local Curtain & Blind Specialist

[www.designerdrapes.co.uk](http://www.designerdrapes.co.uk)

[designerdrapes2@gmail.com](mailto:designerdrapes2@gmail.com)

01223 890556



**Allstar Cleaning Ltd**  
[www.allstarcleaning.me.uk](http://www.allstarcleaning.me.uk)

Your Local, Professional, Carpet and Upholstery Technician Dean  
16 years' experience

Package to suit every level: Basic, Pet Treatment or Carpet Protector



Carpet moth removal and prevention  
Upholstery and rug cleaning services

Contact Dean on 01223 654652 or [info@allstarcleaning.me.uk](mailto:info@allstarcleaning.me.uk) to make an appointment.

Allstar Cleaning, 14 Hillway, Linton, CB21 4JE

## City & Country

Original art by Ian Welsh

18<sup>th</sup> November – 25<sup>th</sup> December 2021

Opening hours 10:00 – 5:00

Wednesdays, Thursdays, Fridays,

Saturdays or by appointment

94 High Street, Linton, Cambridgeshire CB21 4JT [www.galleryabove.co.uk](http://www.galleryabove.co.uk)  
T: 01223 894899 M: 07909981827 E: [info@galleryabove.co.uk](mailto:info@galleryabove.co.uk)

## ClearTax & ACCOUNTING LTD

Quality, friendly accounting services and taxation advice.

Sole trader and small company specialist.

Free initial consultation

Unit 5, Lintech Court,  
The Grip Industrial Estate, Linton.

t: 01223 772326  
e: [janine@cleartax.co.uk](mailto:janine@cleartax.co.uk)  
[www.cleartax.co.uk](http://www.cleartax.co.uk)

## Westlakes

Painting & Decorating  
Les Westlake  
(exterior only)  
07929 501101

Adam Westlake  
Interior and exterior

07917 890752



## PSH Electrical Services

Rewires, New builds, Extra lights, Extra sockets, Repair works, Garden lighting, Showers

Registered NIC EIC domestic installer  
email

[pshelectrical27@gmail.com](mailto:pshelectrical27@gmail.com)  
telephone 07867980738

## CHRISTOPHER MARKHAM HOME & GARDEN SERVICES

Interior/Exterior Decorating  
Fencing, Guttering  
Turving, Garden Clearance  
Lawn & Hedge Cutting  
Decking & Patio Cleaning  
Patios & Driveways  
Call on  
(01223) 892889  
or 07973 294946  
No job too small...

[lintonerown@ashoo.com](mailto:lintonerown@ashoo.com)

[www.erownatinton.co.uk](http://www.erownatinton.co.uk)

## The Crown Inn

Christmas Party Menu 2021

Our Christmas party menu includes 2 or 3 courses plus coffee, mints and a Christmas cracker. The menu will be available both lunchtimes and evenings in our conservatory restaurant.

Luncheon set menu for 3 courses £27.50  
Luncheon set menu for 2 courses £22.50  
Evening set menu for 3 courses £29.50  
Evening set menu for 2 courses £25.50

11, High Street, Linton, Cambs.

01223 891759





## COUNTRY MATTERS

Text by Oriel O'Loughlin, illustrations by Maureen Williams

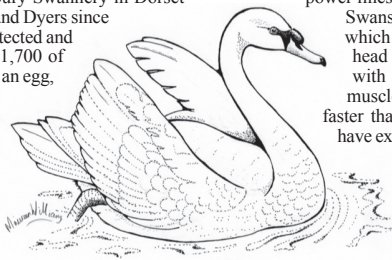


# The beauty of Mute Swans

WHO can resist looking up when you hear a pair of swans flying overhead? Such grace and speed, such extraordinary birds, and such a large part of our country's history and wildlife. At over 10kg, with a huge wingspan, they are unmistakable. And have you looked closely at the size of their feet? They used to be prized for banquets, but now only three organisations are permitted to own swans – the Abbotsbury Swannery in Dorset from the 14<sup>th</sup> Century, and the Vintners and Dyers since the 15<sup>th</sup> Century. All other swans are protected and owned by the Queen, approximately 31,700 of them. You can now be jailed for stealing an egg, never mind a whole swan. If you're at a loss for a career choice, you can apply to be Her Majesty's Swan Marker, responsible for Swan Upping on the Thames, where all the birds are rounded up, ringed and released to monitor the population, and taxidermists all over the country will have to apply to you to stuff any dead swans they happen across.

The mute swan's Latin name is *Cygnus Olor*, not to be confused with Bewick or Whooper Swans, which are winter visitors from the north. The latter have yellow bills, whereas mutes are orange. Mutes are found on farms, grasslands, urban areas, wetlands, salt and freshwater – everywhere but mountains and forests. They are year round residents, though their numbers increase in the winter. They eat grass, water plants, insects and snails, small fish, worms, frogs, potatoes, vegetables, and molluscs attached to vegetation – acting as a sort of watery vacuum cleaner. They eat huge quantities of water crowfoot, keeping channels clear and spreading nutrients. They have no teeth but gizzards,

a muscular organ in their bills that does what our molars do. To make this work, they eat grit to help the gizzard masticate food. This caused thousands of deaths as they picked up lead shot by mistake. Use of lead shot has now been banned, and their only man-made "predator" is power lines. If you have been to Welney Wildfowl Centre, you will have seen orange balls on the power lines to alert passing swans.



Swans have around 25,000 feathers, most of which are the tiny ones around the graceful head and neck. They are designed for flight, with small heads, hollow bones, huge chest muscles, and are able to breathe 10 times faster than us to get themselves airborne. They have excellent sideways vision but are rubbish at looking forward – hence the power line issue. They have an extra membrane over their eyes, effectively a pair of goggles for underwater feeding. They famously mate for life, and nest in quiet often disused waterways, with one month of non-stop egg incubation. In the breeding season they are fiercely territorial. Grace and beauty suddenly transform into a hissing heat-seeking missile, anything but mute. The female (pen) protects the nest, and the male (cob) patrols, and both are equally devoted to the cygnets. Most cygnets don't survive the first three years, foxes being the main culprit.

A winter visit to Welney is a must for swan enthusiasts, especially if you coincide with the regular daily swan feeds. For early risers, joining the Swans Awake group is a wonderful experience, available 19<sup>th</sup> December, 15<sup>th</sup> January and 6<sup>th</sup> February only. We are very lucky to have Welney relatively close by – a close-up look at swans is a wonderful experience.

Swans are very lucky to have Welney relatively close by – a close-up look at swans is a wonderful experience.

## Join our children's play sessions at the Cathodeon Centre

SOUTH Cambridgeshire Child and Family Centres run sessions at the Cathodeon Centre in Linton. We currently hold a stay and play group for children aged from 10 months to five years on Thursdays from 10 am to 11.30 am, and a baby group for non-mobile babies on Thursdays from 1.00 pm to 2.30 pm. All groups are bookable. Please note we are now charging for the sessions which are £2 per family, unless you are in receipt of any additional income support, e.g. Universal Credit. This month we have enjoyed making firework pictures and celebrating Diwali. We are currently planning lots of lovely Christmas activities, so please keep an eye out for our December *What's On* at our Facebook page. These groups are great for meeting other parents and children. Our Child and Family Centre Worker runs the groups and is on hand to give you any advice and guidance if needed. Aside from groups, we work closely with the district team and also can sign-post families to parenting courses. These courses cover different areas, e.g. meeting children's needs, and managing your needs as a parent. We are also on hand to issue foodbank vouchers via the Trussell Trust if any families need them.

Please follow us on Facebook. Our page is *South Cambridgeshire Child and Family Centres*. This is where you can message us to book into groups or alternatively email us: [childandfamilycentre.south@cambridgeshire.gov.uk](mailto:childandfamilycentre.south@cambridgeshire.gov.uk)

Emma Chipps

## Follow a sixties musical journey with the Linton & District Historical Society

OUR meetings have been well attended since they resumed in September. In October we welcomed Dr Dick Paden to give us an insight into the background of Cambridge Instruments and their connection with the family of Charles Darwin, and how the company joined forces with other scientific companies to become one of the major employers in the Cambridge area. Although the techniques used in the early days looked strange and slightly quirky, it was the beginnings of ground-breaking technology which is still operational today, using equipment with which we are more familiar. Members of the audience shared their memories of their time working within the company, which made for another informative and interesting evening. On Tuesday December 21<sup>st</sup> we will be joined by David Caulfield, who will give a talk entitled

### THE SEMI-PRO SIXTIES

*A musician's classic (and often hilarious) journey of the highs and lows of discovery, hope, glory, mishaps and adventure.*

We meet at 7.30pm in Linton Village Hall, Coles Lane. Please feel free to come along, visitors and new members always welcome.

Margaret Creek  
893915

## POT POURRI 198

### How old is my grandparent?

I came across a picture of my grandparent with my mother. She was half her present age and my mother was 4 years old. My mother's age and that of my grandparent now are both perfect squares. How old was the grandparent in the picture?

### Pot Pourri 197 - All the same

The number set that meet the criterion of mean, median, mode & range: 6, 6, 6, 8, 8, 8, 14. Hence highest number is 14.

## Fireworks committee quiz raises cash for schools

NOVEMBER 4<sup>th</sup> saw the generous people of Linton and the amazing customers of Wyldes Sky Brewery getting their thinking caps on for their regular quiz, this time to raise money for the local schools in lieu of the Fireworks Display.

The tables sold out within a couple of days with the team entry money being split with local schools. Ian and Natalie, the co-chairs, got the Tap Room on their feet with a game of heads and tails, and food was supplied by the lovely LOL's Pizza and of course there was plenty of Wyldes Sky beer to go round.

"We may not have raised the funds that we usually raise with the display, but we wanted to do something. We can't wait to start the planning for 2022, and thank you to all the new volunteers who have come forward," said Ian Webb, Co-Chair of the fireworks committee.

If you do want to get involved next year please get in touch. Or if you have any additional fundraising ideas for our schools, let us know and we will see what we can do in the spring. Contact for Linton Fireworks is below.

Natalie Morris  
[info@lintonfireworks.co.uk](mailto:info@lintonfireworks.co.uk)



Members of the fireworks committee with the cheque

## COOPER BARNES

Family run body shop at the Grip, with over 40 years experience in the motor trade

Body Repairs, Accident damage Repairs, Servicing, MOT's Alloy Refurbs & Air-Con Servicing Manufacturer and Insurance approved

2, The Grip Ind Est., Hadstock Road, Linton, Cambridge CB21 4XN  
01223 880603  
[repairs@cooperbarnes.co.uk](mailto:repairs@cooperbarnes.co.uk)

[www.cooperbarnes.co.uk](http://www.cooperbarnes.co.uk)



- 24 hour emergency service
- Boiler breakdown and servicing
- Boiler upgrade



## KA PLUMBING & HEATING

Office: 01223 890554  
Mobile: 07890 576608

[kaplumbingheating@hotmail.co.uk](mailto:kaplumbingheating@hotmail.co.uk)



## LINTON'S CRAFT BREWERY

brewery fresh beer | food trucks | live music | good vibes

BREWERY  
Grip Ind. Estate  
Hadstock Road  
Linton  
CB21 4XN

TAPROOM  
Weds - Sun  
Check out  
our events

SHOP & ONLINE  
FREE LOCAL DELIVERY

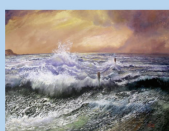
thanks for supporting LOCAL

@wyldeskybrewing | [wyldeskybrewing.com](http://wyldeskybrewing.com) | 01223 778350

## The Darryl Nantais Gallery

Proprietor: Karl Backhurst  
Fine Art, Framing & Restoration

We offer a wide selection of artwork, contemporary & traditional, local & international. Including paintings, prints, ceramics, glassware, sculptures & jewellery. The Gallery also offers bespoke framing, picture restoration and cleaning.



We are delighted and very grateful to be celebrating our 20<sup>th</sup> Anniversary this year and would like to thank everybody for making this possible and such a pleasure.

59 High Street, Linton, Cambridge CB21 4HS ~ 01223 891289 ~ [linton59.co.uk](http://linton59.co.uk)  
For regular news updates follow & like us on Facebook & Instagram  
Tuesday to Saturday 10am to 4pm

## G. DYE & SONS GENERAL BUILDERS, GROUNDWORK & MAINTENANCE, CONSERVATORIES & UPVC WINDOWS, KITCHEN & BATHROOM REITS

ALSO INTERIOR & EXTERIOR DECORATING  
REFERENCES AVAILABLE

For enquiries please call

Mobile:

07961 342887

Tel: 01223 892089

[georgedy738@btconnect.com](mailto:georgedy738@btconnect.com)



## Bentens

Accountants and Tax Advisors

Abbey House, 51 High Street  
Saffron Walden

01799 523053 [www.bentens.co.uk](http://www.bentens.co.uk)



## District and County Councillor's Report – November 2021

### Local Plan Consultation

Following the publication, by the District Council, of the preferred sites for development, there is now a public consultation on these proposals that is live and runs until December 16th. The proposals are to concentrate all major development into existing and forthcoming settlements, such as Waterbeach, Northstowe, Cambourne etc and leave the villages as they are, as villages. The documents can be accessed and commented upon here [www.greatercambridgeplanning.org/localplan](http://www.greatercambridgeplanning.org/localplan) - if people are broadly in favour of the principle of keeping major development in the existing settlements, please do comment and say so.

### Enhanced Covid Response Area

Following the steep increase in positive Covid cases and hospitalisations in Cambridgeshire & Peterborough over recent weeks, central government have designated the county as an 'Enhanced Response Area' which means that we are allowed more funding to support the battle against the virus. It also means that some venues, such as schools, could enforce mask wearing again. So, the message is, the virus hasn't gone away, so please do all continue to act with caution.

### Watercourse Reinstatement Grant

There is a grant available from the County Council to help address local flooding issues, specifically where the riparian owner either cannot be identified or is unable to undertake the necessary work themselves. Full details and the application form can be found at [www.cambridgeshire.gov.uk/business/planning-and-development/flood-and-water/riparian-watercourse-grant](http://www.cambridgeshire.gov.uk/business/planning-and-development/flood-and-water/riparian-watercourse-grant)

### Food waste collection trial

South Cambs DC are currently undertaking a food waste collection trial – to see if splitting food waste out from general green waste reaps any tangible benefits. We will share the results of the trial, once they are published.

### 20mph Zones

The County Council have started the process of reducing the barriers to creating more 20mph zones in Cambridgeshire's villages and towns. Currently the process is quite restrictive, as the criteria for 20mph zones are very rigid and officers tend not to deviate from them. Hopefully we will be able to announce that the County Council are able to relax the criteria somewhat in coming months.

### New County Council Chief Executive

The County Council is on the verge of appointing a new Chief Executive. At time of writing the decision is still confidential but I'm sure it will be publicised in local media, so do keep an eye out.

District Council – John Batchelor – [johnbatchelor23@gmail.com](mailto:johnbatchelor23@gmail.com)  
County & District Council – Henry Batchelor – [henrybatchelor89@gmail.com](mailto:henrybatchelor89@gmail.com)



**LINTON JAZZ**  
Sunday 12th December  
3pm  
Linton Village College  
An afternoon of  
**BIG BAND MUSIC**  
Old favourites and Christmas Classics  
Reach Community Projects  
Adults £10  
Over 65s £5  
Under 16s £2  
[www.lintonjazzchristmas.eventbrite.co.uk](http://www.lintonjazzchristmas.eventbrite.co.uk)



**LINTON Christmas Market**  
at: Linton Free Church  
Horn Lane, Linton, CB21 4TF  
SATURDAY 11th December 2021  
10am – 2pm  
CHRISTMAS GIFTS • CAROL SINGING  
LOCAL FOOD + DRINK • MULLED WINE  
WYLD SKY BREWERY • & MORE!  
We'd love if you could arrive by bicycle, on foot, or by public transport as parking in our village is limited  
@TheLintonKitchen [www.TheLintonKitchen.com](http://www.TheLintonKitchen.com) 01223 894949

## PLANNING APPLICATIONS

Partial demolition of rear utility room to allow single storey to the front and rear with a two storey side extension.

### 46 Balsham Road Linton CB21 4LD

Ref. No: 21/05013/HFUL | Validated: Mon 15 Nov 2021 Status: Awaiting decision

Two storey side extension and flat to pitched roof on rear extension Open for comment icon

### 18 Finchams Close Linton CB21 4NE

Ref. No: 21/04944/HFUL | Validated: Wed 10 Nov 2021 Status: Awaiting decision

Change of use from Class E (previously A1) to Class C3 residential Open for comment icon

### 61 High Street Linton CB21 4HS

Ref. No: 21/04842/LBC | Validated: Thu 04 Nov 2021 Status: Awaiting decision

## Camsight Linton VIPs: a group for visually impaired people of all ages

AT our November meeting, we were very pleased to welcome John Clenaghan, a freelance musician and the musical director of the Balsham Singers. A professional pianist, he played a variety of tunes including one or two light classical pieces and many popular songs old and new which had our feet tapping and many of us joining in to sing the choruses.

A delightful occasion, ending with our usual afternoon tea. Although we had a very good turnout of members and volunteers, care was taken to space the chairs, ventilate the room and wear masks when moving around.

Our next meeting will be on Tuesday 14th December at 1pm (instead of the usual time of 2pm.) when a Christmas lunch will be served by the volunteers.

If you or anyone you know would like further information, please contact us on the main Cambridge number 420033 or on the number below.

Jean Mannion  
893595



**Linton Sports Centre**  
Gym  
Tennis Courts  
3G Pitch  
Grass Pitches  
Sports Hall  
New Gym  
Dance Studio  
Cricket Lanes  
01223 890248



**McKenzie & Haywards Garage LTD**  
MOT by appointment while you wait  
Servicing, Collection & Delivery Service  
Unit 3 & 4, Lintech Court  
The Grip Industrial Estate  
Linton, Cambs  
CB21 4XN  
Tel: 01223 894140  
Fax: 01223 890035  
[mhgarage@btconnect.com](mailto:mhgarage@btconnect.com)



**LINTON'S CRAFT BREWERY**  
brewery fresh beer | food trucks | live music | good vibes  
BREWERY Grip Ind. Estate Hadstock Road Linton CB21 4XN  
TAPROOM Weds - Sun Check out our events  
SHOP & ONLINE FREE LOCAL DELIVERY  
@wyldekybrewing | [wyldekybrewing.com](http://wyldekybrewing.com) | 01223 778350



**KJL Roofing**  
All roofing repairs, leadwork, renewal of pitched or flat roofs  
New guttering, repairs/unblocking  
Free estimates before any work commenced  
25 years + Experience  
Tel: 01223 892542  
Mob: 07958 618440



**BRICK MARKETING**  
Injecting power into your marketing  
[brick-marketing.co.uk](http://brick-marketing.co.uk)  
[hello@brick-marketing.co.uk](mailto:hello@brick-marketing.co.uk)



**ADMIRAL ESTATES**  
Residential Lettings and Property Management  
• Local, Family Run, Business  
• Fully Regulated, Compliant and Qualified  
• Specialists: Cambridge, Linton & Local Villages  
• 25 Years Experience  
If You Prefer Great Service From A Good Local Business? Why Not Call Us?  
Check Out Our Google Reviews: Cambridge Office or Our Local Linton Office.  
Call us Now: 01223 891227  
[www.admiralestates.co.uk](http://www.admiralestates.co.uk)



**CapriBlinds**  
ALL TYPES OF BLINDS SUPPLIED AND FITTED  
FREE QUOTATIONS  
FREE HOME VISIT  
07774 168833 TEXT ONLY  
or email [colin@capriblinds.co.uk](mailto:colin@capriblinds.co.uk)  
ALL BLINDS ARE MADE IN ENGLAND - FAST LOCAL SERVICE  
Visit [capriblinds.co.uk](http://capriblinds.co.uk)



**GLENWOOD BOLTS & SCREWS LTD**  
[www.glenwoodbolts.co.uk](http://www.glenwoodbolts.co.uk)  
SUPPLIERS OF QUALITY FASTENERS, FIXINGS & SILVERLINE TOOLS  
Unit 2 Lintech Court  
The Grip Industrial Estate, Linton  
Cambridge, CB21 4XN  
Tel: 01223 892095 / 893931  
Fax: 01223 894122



**NRS CARPETS**  
HOME SELECTION  
FREE MEASURING & ESTIMATING  
All types of flooring available  
Tel: 01223 893634  
Mobile: 07885 173113

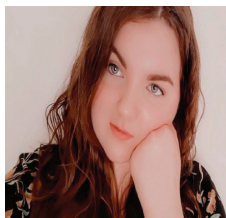


## A Voice for Youth youngest Councillor in the U.K?

HELLO, I would like to introduce myself, my name is Caitlin Seaward and I am eighteen years old. It is thought that I may currently be the youngest Parish Councillor in the UK and I feel privileged to be welcomed by the Linton Parish Council. I hope to help give a voice on the Parish Council on behalf of the children and youth in the village and also help to shape Linton for future generations. I would like to encourage anyone with ideas and suggestions for youth projects to get in touch with me via the Parish Council Office.

I have lived in Linton for twelve years, having moved here from Devon in 2009. I attended all three schools in the village and have very happy memories of each. Whilst at Linton Village College, I took part in the school production of "The Sound of Music" and was an active member of the school choir.

In September this year I started working at Julie & Jo's child-care in the village. It has always been my intention to work with children, following my studies in Health & Social Care at Long Road Sixth Form College. My Early Years Educator apprenticeship is giving me the opportunity to work at a place full of love and laughter. I enjoy every moment of my day and look forward to being part of a very special team for many years. Readers may well know my Grandparents, who have lived in the village for over thirty years. Brian & Iona Pettit. My Granddad, who used to have *Small Gifts* in the High Street, is keeping well and still continuing to work from home.



Cllr. Caitlin Seaward

Cllr. Caitlin Seaward.

## Welcome to New Councillors

IT IS with great pleasure that I can welcome Helen Lawrence-Foulds and Caitlin Seaward to the Linton Parish Council. Helen lives in Little Linton, which had been rather missed out in the work being done on the Neighbourhood Plan, and she is keen to join the Planning Committee.

Caitlin has just started work in a local childcare business and will give the Parish Council a youth point of view. The more diverse we are the better the debates and decisions.

Currently the Parish Council has 3 engineers from different disciplines, a microbiologist & clinical researcher, 3 educators, a financial controller, an IT expert and people with retail and youth experience. Some are in full time work, some part-time or retired. Hobbies and interests include photography, hedges, animal welfare, education, trees, the environment, local history, looking after the graveyard and assisting with language studies. One can even speak Latin!

We still have 2 positions for co-option and it would greatly add value to our work if we had councillors with perhaps a legal background, experience of the charity sector, a farming background or an interest in architecture and listed buildings. Or basically, just an interest in what goes on around here.

Perhaps in the New Year we might fill those last two places – here's hoping.

In the meantime, on behalf of the Parish Council, we wish everyone a proper Merry Christmas and a Very Happy New Year.

Cllr. Merrie Mannassi.

## Parish Progress it's been a busy year!

WHAT a busy year it has been, looking back over the past twelve months it is a pleasure to note how much has been achieved.

In October last year we were busy planting bulbs which were a joy to see in the Spring. We are in the process of adding to the display for 2022 and volunteers are hard at work planting native snowdrops, crocuses, bluebells and daffodils on the open spaces in the village. It is worth noting that the verges will be cut a little later so that we can enjoy the spring blooms in all their glory.

The hedgerow packs to be planted around the fire station arrived this week and a group will be busy in the next couple of weeks getting these in place. The Linton Parish Council was awarded a Zero-Carbon grant in November, from South Cambridgeshire District Council and will be able to provide a community orchard near the library and enhance the Pocket Park with additional trees, benches and information boards. If you would like to get involved, please contact the office to join the group of volunteers.

We have been pleased to add and replace numerous benches and bins in the village. The disabled picnic bench was installed at the Recreation Ground and two memorial benches have been added, one of which is on Camping Close, overlooking the River Granta. We know that this will be welcomed by many parishioners. We experienced extensive flooding twice in the Cemetery in 2021 and the majority of restorative work has now been completed. The Cemetery is a work in progress and the focus on this area will continue into the New Year. Work is planned to address the flooding of the Rivey bridlepath, CCC and Highways are planning to start work on drainage soon and we hope that this will solve this historical issue.

The Skate Park was installed, finally, and the Play Areas upgraded. This was a large project that the Parish Council were determined to complete for the young people in the village. It is a pleasure to see it so busy. We continue to have issues with anti-social behaviour but must be mindful that this is a minority group of youths, the majority of youngsters treat the area with respect and are simply enjoying themselves.

These projects are just a small part of the work carried out by the office team. Our day to day responsibilities include helping in all areas of village life. Maria, looks after Planning and has certainly had her work cut out this year! Nadine, our Burials Officer advises parishioners and works closely with Funeral Directors to ensure families have support at all times. Chris, our Village Custodian is out in all weathers, keeping the village clean and tidy. He is currently battling the fall of the autumn leaves!

The team in the office works hard and is the first port of call for parishioners, we will always strive to help. Please email the office if you need advice or support on enquiries@linton-pc.gov.uk or phone us on 01223 891001.

Clerk.

## Dates for your Diary

THE NEXT meeting of the Linton Parish Council will take place on Thursday 9th December 2021. The meeting will take place at the Cathodeon Centre. Members of the public and press are welcome to attend. If you would like to address the Parish Council but are unable to attend the meeting, please contact the office for further guidance.

The Parish Council office will close for Christmas from Friday 17th December, reopening on Tuesday 4th January 2022. During this time the team will monitor emails and calls. The team at the Parish Council Office would like to wish all parishioners a very Merry Christmas and a Happy New Year.

Clerk.

## Meeting & Planning Updates October 2021

### Meeting Updates -

Chalk streams and river pollution remain in the news - meetings of the groups involved continue. Cllr Simon Hill has made Fergal Sharkey, a vocal supporter of chalk streams, aware of problems of our Granta. Updates from Lucy Frazer, our MP, on improved legislation against pollution. Other groups and statutory bodies have been alerted to the plans for a lake at Castle Camps which would take water from upstream and affect flow in the Granta. We have seen sewage and other pollution in the Granta following rainfall and work on the building sites. Grey sludge in the river is obvious; we must wait to see the outcome on plants, larvae, fish, crustaceans and other wildlife as the effects are seen up the food chain.

**FROGS** (Friends of River Granta) met to decide plans for work at Pocket Park to improve the banks and add oxygen to the river, as advised by the Wild Trout Trust, supported by LPC, but handled by volunteers. Litter picking, tree and bulb planting will also be tackled (yes, more grants!)

**Pocket Park Group** - a Zero Carbon Grant has been won to provide a second Community Orchard, a grove of native trees, information boards, seats, etc. Details discussed and preparatory work will start soon, with planting in the Spring.

**Rivey Lane Meeting** - on site - CCC will soon clear the banks of scrub and dead trees, dig drainage ditches and later work on the path. Once dug, it is the duty of Riparian owners to keep the ditch clear and manage overhanging trees. However, appropriate shrubs and flowers could be planted - this is the ancient Icknield Way. The amount of litter, mattresses and garden waste was remarkable...and sad.

**Conservation Area (CA) Appraisal** - continues with meetings at Little Linton, which could have its own CA. A remarkably historic area centred on the farm, with ancient trees and rather lumpy fields - what archaeology finds must be there!..

**Disability Access and Safety Project** - tour of village with Cllr Helen Lawrence-Foulds to update what can/needs to be done. Many issues already tackled over the last 15 years. Ongoing work reviewed, new problems and solutions added to scheme.

### Planning Updates.

A rush of applications, mainly repairs and updates to listed buildings in the High Street.

Chapel Row - 21/04736/FUL - Changes to the shop front and walls were submitted.

21/04722/FUL - Now there is an application for change of use of "Small Gifts" from shop to residential use; a change to the character of the area. Such a change should show that there have been diligent attempts to continue commercial use.

Coles Lane/Back Road corner - 21/04745/FUL - the latest application is for one large house of modern design and materials; now reduced in number but of similar design.

Queens House 21/04515/HFUL - Plans to replace the wall, which is in poor condition.

20 Cambridge Road - 21/04543/FUL - another application for a "Convenience Store" on the Van Centre site. There is an approved application for flats, for starters, down-sizers and some adapted for the less able, but this is not currently progressing. 35 Balsham Road (adj) 21/04447/OUT- resubmission of plans for infill house.

Horseheath Road - Surface Water Flooding and Foul Water schemes remain under review. New plans expected. Technical input of Cllr Kate Kell and several residents continues, as have meetings with SCDC, LPC and our MP. Local knowledge must be given greater weight in decision making.

Meanwhile, building continues without consent - "agreed but not approved" means that building certificates will not be issued - Buyers beware!

Cllr Enid Bald.

sqcarsales.co.uk

for service & quality

# SQ Car Sales

Quality used cars

t: 01223 778 448 m: 07908 128 164

## Singing Lessons

Sarah Rosewell  
BA (Hons) Music

Individual singing lessons  
available for all ages  
and abilities

Whether towards exams or  
purely for pleasure

\* CRB Checked

\* Based in Linton

For more information contact:  
Sarah on 01223 894861

Email:  
sarahrosewell@hotmail.com

zigzagpilates

• Qualified Body Control Pilates  
Teacher.

• Classes and 1-1 sessions

• Specialising in older and less  
able clients.

Contact Rachel 07905105081  
Rachel@zigzagpilates.co.uk  
www.zigzagpilates.co.uk

The Linton  
Laundry

Shirt pressing

Ironing

Laundry

Eco friendly detergents

Wet Cleaning

Door to door service

Call us on 07894 197805

info@lintonlaundry.co.uk

lintonlaundry.co.uk

# SHINE

WINDOW  
CLEANING

TEL. 01223 893529

MOB. 07703 518882

FREE QUOTATIONS

FULL PUBLIC LIABILITY

INSURANCE

shinewindowcleaningservices@gmail.com

## PLUMBLINE

PLUMBING AND HEATING ENGINEER

PROFESSIONAL DOMESTIC PLUMBING SERVICE

Including Property Maintenance

Painting; Tiling; Plastering; Carpentry

Call John on

01223 893903

Supcuk@talktalk.net

Fully Qualified and Insured

Friendly and Reliable Service No Job Too Small



BODY  
DESIGN  
PILATES



Su Matthews

REPS LEVEL 4 PILATES TEACHER

& BACK4GOOD PRACTITIONER

07986 692 334

# Pilates Classes

Linton & Horseheath

su@bodydesignpilates.co.uk

bodydesignpilates.co.uk



# Linton



07958 657300

lintoncabs@btinternet.com

Linton Cabs

Private Hire for: Airports / Train Stations /

Local Travel

Martin French



# Parish Council Minutes

Parish Council Matters is written, edited and published by the Parish Council with the support of the Linton News Team.

ABBREVIATED minutes of the Meeting of Linton Parish Council held on Thursday 21st October 2021 at the Cathodeon Centre.

**Apologies for Absence.** Cllr Paul Poulter, Cllr Merrie Mannassi (Chairman) and County & District Councillor Henry Batchelor. In Cllr M Mannassi absence Cllr John Bald chaired the meeting.

**Chairman's Comment.** The Chairman welcomed Cllr Lawrence-Foulds and Cllr Seaward to the Parish Council and commended Cllr Seaward on the completion of the new Councillor Training. He stated that progress had been reported in the Planning Committee meeting on both Horseheath Road and Bartlow Road in relation to the review of drainage.

The Chairman also commented that the road drains had still not been cleared in the village despite the Clerk chasing these and that this needed to be chased by the County & District Councillors. He also congratulated Cllr Simon Hill on his recent photography of the River Granta. Cllr Enid Bald recommended that Cllr Hill circulate the photograph to promote the rare and protected chalk stream.

## Open Forum for Public Participation

The chairman invited the public to address the Council.

Participant 1 spoke of issues with missed bin collections in Symonds Lane. They had been advised that the Parish Council are required to make a formal request to Highways at CCC for double yellow lines to be installed on either side of the entrance to 8/8a and 10 Symonds Lane, to allow for manoeuvring of the green bin lorry. In the meantime the residents of the properties would use traffic cones as a temporary solution to the problem, having already ensured that there was no legal reason against this. The Clerk would seek further information and this item would be discussed at the next Full Council meeting.

## Matters Arising/Clerks Report.

Cllr Caitlin Seaward had completed her New Councillor training and Cllr Helen Lawrence-Foulds is booked for the same in December. For Information. Noted.

Six Free trees application has been successful. Correspondence item 120 refers. For Information.

Clerk advised the Council that one specimen tree had been ordered in preference to 6 whips. A Cherry to be planted on Parsonage Way. Noted.

Notification of Christmas closure of the Parish Council office from Friday 17th December, returning on Tuesday 4th January 2022. Cover will be provided for essential services. For Information. Noted.

## Consideration of the District and County Councillors Report for October 2021.

District Councillor John Batchelor advised the Parish Council that a new food waste bin would be distributed week commencing 1st November 2021, with the first pick up 8th November.

Positive Covid-19 cases had increased to 500-600 per 100,000, 50% of which were from those under 17 years of age. He advised all to have the booster as soon as it becomes available.

DC John Batchelor took a note of the concerns over the road drains to pass onto County & District Councillor Henry Batchelor. Concerns were discussed regarding the planning application for land adjacent to 35 Balsham Road, all of which were noted. Committees, Working Groups & Council Representatives.

Committees for 2021/2022.

Cllr Kate Kell nominated Cllr Lawrence-Foulds to join the Planning Committee. Cllr Enid Bald seconded. All in favour.

Cllr Amy Smith requested to represent the Parish Council for Public Transport. Cllr Simon Hill stepped down.

Cllr Amy Smith requested to join the Website/Social Media Working Group.

Cllr Lawrence-Foulds requested to join the Traffic Working Group. Cllr Seaward requested to join the Youth Working Group.

## Planning.

### Flood Information

Cllr Enid Bald wrote a report on surface water flooding which was taken to the Planning Committee meeting on 21st October 2021, in summary the report shows nearly all areas of the village, Little Linton & The Grip were affected by flooding. Cllr John Bald has sent the report and findings to Lucy Frazer (MP)

to ensure she has the information to enable her to continue her support for the village.

## Bartlow Road.

Update on the Bartlow Road development site. Ref S/2501/19/RM. Cllr Enid Bald updated the Council that the Surface Water and variation of Foul Water drainage conditions were refused at the SCDC Planning Committee meeting held on 29th September 2021. LPC have been advised by SCDC are awaiting decisions of conditions at appeal before acting on enforcement. If the appeal is upheld, in favour of the developer, then the LPC will need to consider progressing the judicial review.

Update on the progress of the Judicial Review.

This was discussed in item 149/21/22 (i) the current expense on the JR is under the £5,000 budgeted. Cllr Enid Bald clarified that no permission was given to drive accesses.

## Horseheath Road.

Update on the land south of Wheatsheaf Barn, Horseheath Road development site. Ref S/4418/19/RM. Verbal update from the Chairman of the Planning Committee, Cllr. Enid Bald.

The developer continues to build despite not fulfilling the pre-commencement conditions.

Cllr Kate Kell advised the Council that a resident is in discussions with Stephen Kelly (GCSP) and Hilary Ellis (LLFA) and had advised the Planning Committee that a peer review had taken place by Capita. Capita had concluded that the developer was not complying with the outline application and to expect material amendments for the site as a result of their findings. Cllr Enid Bald reminded all that the planning permission was "up to 42" houses therefore the developer may have to reduce the number of houses built.

## Finance

Consideration for the External Audit report for 2020/21.

The Chairman thanked the Clerk for her work on the audit.

Consideration of the revised, accepted quote for the Energy supply for the Street Lighting for a 36-month contract from SSE.

## Memberships & Renewals

Consideration for the renewal of the Annual Membership to the Allotment Society at £66.00.

Cllr Simon Hill proposed, Cllr Amy Smith seconded. Agreed with two abstentions.

Consideration of the quotation from SCDC regarding the upgrade of the ornate lamp posts in the village.

The clerk was asked to query the information regarding the listed lamp posts as these were not to be upgraded to standard posts, including SC38,39,42 and 60 regardless of whether they are in the conservation area. This item to be brought back to the next Full Council meeting for further discussion.

## Traffic & Highways

Update on the meeting with CSET/Greenways held on 9th September 2021. Meeting report available.

Cllr Enid Bald advised the Council that the gate on the Recreation Ground needs changing and that CSET will pay for this to be replaced by bollards. Noted.

Consideration for replacement bollards to the Recreation Ground entrance in relation to CSET/Greenway's project planned to commence in Spring 2022. Open Discussion and Decision required. It was discussed that black and gold bollards would match the bins; however reflectors would be required to ensure good visibility for the partially sighted in the village.

## Camping Close

Consideration for a request to hold an event on Camping Close in September 2022.

Open discussion and Decision required.

Cllr Chris Hine advised that the correspondence was not a direct request to hold an event in Camping Close. The Council requested that the Clerk write to the Linton Infants, the School Caretaker, and the Events Liaison Officer to state that LPC consider that a further event of this type would not be acceptable in the village and that they would not support an application.

## Meadow Recreation Ground

Consideration of the Recreation Ground Licence Fee, stating that the Football & Cricket Clubs each pay an annual fee of £10.00

for continued use of the grounds. Open discussion and Decision required. Cllr John Bald proposed to request a copy Constitution of the Sports and Social Club at the Linton Granta Football Club committee meeting to be held on 28th October 2021 and to advise the LGFC of formal notice of a new licence to commence 1st May 2022. Cllr Brian Cox seconded. All Agreed.

Consideration for the installation of additional lighting and CCTV at the Recreation Ground following reports of anti-social behaviour and vandalism. Open discussion and Decision required. Cllr Chris Hine agreed to investigate options for security lighting and CCTV. This item would be discussed once more information was available.

Consideration for a public consultation regarding the future use of the Bowling Green, following an initial site visit with a representative from Kompan. Open discussion and Response required. Cllr Enid Bald advised the Council that S106 for an Adult trim trail would become available. A questionnaire was requested, via social media and the Linton News, to ensure maximum participation from the parishioners.

Consideration for the request for a new entrance gate on the Recreation Ground leading to the Sports Centre.

The Parish Council requested a meeting be arranged with Linton Village College and the Sports Centre to allow for a full discussion on arrangements for parking.

## Cemetery

Review of the current Cemetery Fees including setting a cost for small plots only suitable for ashes but to include a headstone. Supporting documents available in Councillor packs. Open discussion and Decision required.

Cllr Kate Kell and Cllr Enid Bald to visit the Cemetery with the Burials Officer to gain clear understanding of the above and a full review of the Cemetery Fees would be discussed at the next meeting.

## Trees, Biodiversity, River Care & Wildlife

Update on the Zero-Carbon Community Grant application and consideration for a contribution of £707.00 towards the project. Open discussion and Decision required.

Cllr Enid bald proposed the Council support the project with funding of £707.00. Cllr Kate Kell seconded. All Agreed.

## Conservation Area

Update on the Conservation Area walk-around on Friday 15th October 2021. Cllr Enid Bald advised the Council that progression was needed and that a walk around to assess changes since the last appraisal is now required.

## Youth

Update on the meeting with Beacon Youth Trust to discuss the current SLA which expires in January 2022.

Cllr John Bald updated the Council that the BYT would be submitting an SLA application before Precept discussions and suggested that the LPC would only be contributing to a Youth Worker. The continuation of the agreement and the volume of spend was discussed. Cllr Chris Hine noted that the ripple effect should also be considered to the village as a whole. Further discussion would be required to discuss the level of funding.

Full Minutes are available on the Parish Council website.

Clerk.

The Village Hall, Coles Lane, Linton,  
 Cambridge CB21 4JS Tel: 891001  
**Clerk to the council – Mrs Jenny Seaward**  
**Email:** enquiries@linton-pc.gov.uk  
**Website:** www.lintoncambridgeshire-pc.gov.uk  
**Facebook:** www.facebook.com/lintonpc  
**Office open: Monday, Tuesday, Wednesday and Friday 9am – 12noon. Closed on a Thursday.**  
 Full Council meetings are held at the Cathodeon Centre, commencing at 7.30pm on the third Thursday of the month.



**Cambridgeshire Family Chiropractic Centre**

Bespoke massage and chiropractic care for aches and pains  
 Specific techniques for pregnancy and children  
 15 years' experience  
 Call 07870568548

www.cambridgefamilychiro.co.uk

**TIM PHILLIPS & Co.**  
**Accountants**  
 Established 1991

Independent, specialist service for:  
**Small Business • Self Assessment  
 Personal Taxation**

Free initial consultation – no obligation  
**EASY, FREE PARKING**

Copley Hill Business Park, Cambridge Rd., Babraham  
 Off A1307 between Wandlebury and Babraham  
**Tel: 01223 830044. www.tpaccounts.co.uk**

**Christmas @ The Dog & Duck**  
**63 High Street, Linton TEL: 01223 890349**

**Live Festive Jazz**  
**Sunday 5th December**

**Gin Night**  
**Discounted Gin, Live Music with Robin & Neil**  
**Thursday 16th December**

**New Years Eve**  
**Open 'Till Late**

**Find Out More On Our Website**  
**WWW.DogandDuck-Linton.CO.UK**

**Pest Right**  
**Pest Control**

ants  
bedbugs  
bees  
carpet beetle  
cluster flies  
cockroach  
earwigs

fleas  
flies  
foxes  
mice  
moles  
moths  
pigeons

rabbits  
rats  
silverfish  
spiders  
squirrels  
wasps

Based in Linton, call Mark or Carolyn on  
**01223 897982 or 0845 4682412 or 0777 620 4483 for a discreet professional insured service**

RESIDENTIAL • COMMERCIAL • AGRICULTURAL • INDUSTRIAL

With us, it's personal

I offer a personal, bespoke, concierge travel service. From city breaks to cruises, luxury beach holidays to staycation and even corporate travel. I can take care of everything for you from start to finish. Following the Covid 19 pandemic, it has never been more important to book your travel with your local experienced travel expert!

**Romy Frow**  
**01223 929 080**  
 Romy.Frow@travelcounsellors.com  
 www.travelcounsellors.co.uk/romy.frow  
 f RomyFrowTravelCounsellors

**Linton Complementary Health Centre**

2B Bartlow Road, Linton, CB21 4LY

- Acupuncture
- Shiatsu
- Massage
- Food Intolerance Testing

Telephone: 01223 891145  
 Email: enquiries@lintonhealth.co.uk