

Saving Lives is a Team Effort



WE are East Anglian Air Ambulance, a charity providing lifesaving critical care every day of the year, across Bedfordshire, Cambridgeshire, Norfolk and Suffolk. Whether by air or road, we're there for the most seriously ill and injured, when every second counts. Our specialist doctors and paramedics bring hospital-level treatment straight to the scene. From blood transfusions and pain relief to anaesthesia and emergency surgery, we give patients the best possible chance of survival and recovery. We also provide vital aftercare, train people in lifesaving skills, and carry out clinical research.

No two emergencies are the same. We ensure every person our crews are called to receives the emergency treatment and care they need as soon as possible, before being transferred to the most appropriate or specialist hospital – whether that's a major trauma centre, specialist cardiac centre, or burns unit – for their ongoing treatment and care.

We partner with the emergency services and, in 2024-25, we provided urgent treatment and care to 1,846 people, but we are not funded by the government – and that means we are fuelled by supporter donations. So, you really are part of the crew who keep the helicopter rotors turning and our crews responding to our region's medical emergencies, day and night.

It truly is a team effort; thank you for being by our side. For more information about East Anglian Air Ambulance:

Website : eaaa.org.uk
 Telephone : 03450 669 999
 Email : info@eaaa.org.uk

*East Anglian Air Ambulance - article
L. Horgan - picture*

Lonsdale Lights



THANK you to all who made the effort to come down to Lonsdale and see the Christmas lights. We all hope you enjoyed them as much as we did! Also, a big thank you for your generosity this year, we have raised the grand total of £1,066.70, which I am sure you will agree will be going to a very worthy charity – The British Heart Foundation. We can promise you that the lights next Christmas will be just as dazzling, maybe there will be even more lights to add to the sparkle!

Thank you from all of Lonsdale!

Kate Barrett

A New King for the Crown

AT the heart of Linton, The Crown is more than a pub – it's a vibrant and busy community hub where everyone is welcome. We come together to relax, unwind, make friends, share stories and enjoy great food in comfortable surroundings. Under the guidance of Adam, our new landlord, the pub is bringing fresh energy, combining delicious meals with a full calendar of events that will make every visit special.

Behind the bar and in the kitchen, the talented team continues to work tirelessly to create a welcoming, lively and friendly atmosphere. You'll also notice tweaks to our menu, with plans to launch a new tasting menu soon, watch for announcements on our website and social media.

This year promises plenty of reasons to visit: Valentine's night, Mothers' Day, Sunday Lunches, and other anniversaries throughout the year including St Patrick's Day and St George's Day specials. There will be plenty of live music starting with the band What'sNext playing favourite hits from the 60's to today to banish those wintry blues. Our restaurant is open and taking bookings all week, including our flagship Sunday Lunches. Call to reserve a table, meet Adam and the team, and discover why The Crown, Linton is the place for food, fun, and live events!

Linton News Team



Bartlow Walk 2026

BARTLOW Walk 2026 will take place on 3rd May 2026, inviting walkers, families, and four-legged friends to enjoy a lively day out in the surrounding countryside. This popular event welcomes well behaved dogs on all routes, and combines outdoor fun with supporting three important local causes.

Participants can choose from four walks to suit all ages and abilities. A gentle one mile music-themed walk is ideal for walkers of any age, while those looking for more of a challenge can take on the six, nine, or thirteen mile routes, all offering scenic views and well-marked paths.

The event farmyard will come alive in the afternoon, when walkers return to enjoy food and refreshments, with a bar and a variety of food stalls available. Children's activities will run alongside the refreshments, ensuring entertainment for younger visitors throughout the afternoon.

Live music will add to the celebratory atmosphere, with the wonderful Linton Jazz Band performing in the afternoon, providing a fun relaxing atmosphere as participants unwind after their walks. More information and ticket sales will be available soon on our website bartlow3countieswalk.co.uk.

This year the Bartlow Walk is raising money for three vital local charities: Arthur Rank Hospice, Addenbrooke's Children's Hospital, and the fabric of beautiful Bartlow St Mary's Church. Let's make it a day where every step truly makes a difference.

Duncan Ogilvy walk coordinator 01223 893644

BARTLOW
counties
3
CHARITY WALK

College Receives Prestigious Award

LINTON Village College is proud to be recognised as a Trinity Champion Centre for 2025/26, celebrating our successful delivery of Arts Award qualifications. Trinity College London is an international exam board and education charity specialising in music, drama, combined arts and English language.

At LVC, the Arts Award is embedded in our curriculum, with all Year 7 students completing the Bronze Award. This achievement was recently highlighted in an Arts Award case study. Beyond Bronze, students can progress to Silver and Gold through extra-curricular opportunities led by trained staff. The Gold Award, usually offered by post-16 providers, carries 16 UCAS points, a fantastic way for us to stretch and challenge learners.

Arts Award encourages students to explore their creativity in areas such as dance, music and art. They also develop leadership skills by planning and running an arts based activity for a chosen audience, building confidence in communication, organisation and problem-solving.

Continuing the celebration of the arts, we are thrilled to share the success of Mia in Year 11. On 18th December, Mia conducted O Come All Ye Faithful at Anna Lapwood's Christmas Concert at the Royal Albert Hall. Performing in front of 6,000 people (pictured right) with the Royal Philharmonic Orchestra, Mia rose to the challenge and was even gifted the conductor's baton, an unforgettable experience.

At Linton Village College, we are always committed to nurturing creativity and ambition, ensuring every student has the opportunity to explore the arts and develop leadership skills that open doors to exciting future pathways.

Helena Marsh



What's on at LGFC this February

LINTON Granta Football Club is hosting its annual Valentine's Disco on Saturday 14th February from 7.30pm to 11.30pm at the Sports Pavilion on Recreation Ground. This promises to be a great evening. Tickets cost £5 per person and are available before the event or on the door. All proceeds go back to LGFC.

We are currently looking for new players to join both the 1st and reserve teams, if interested please speak to Rob and attend the training seasons at LVC Astro on a Wednesday night at 8.00pm.

LGFC are also currently seeking members of the local community to join our committee and help support the club, which is run entirely by volunteers.

Susan Wilson

Hildersham Baroque Music Series

HANDEL *and the Italian Connection* is the next concert in the popular Baroque Music series in support of the Friends of Hildersham Church. A programme of Handel, Scarlatti, Corelli, Castello, and Vivaldi will be performed by Professor Ashley Solomon and graduate students from The Royal College of Music Historical Performance Faculty. This will be a very special evening where they will be performing a selection of baroque concertos and sonatas. Ashley is a baroque flautist and is a Fellow of both the Royal Academy of Music and the Royal College of Music where he also has a Personal Chair.

The concert is at Holy Trinity Church, Hildersham, CB21 6BZ on Tuesday 24th February at 7.30pm. Tickets £15 from eventbrite or on the door - refreshments included. For further information, contact Athene Hunt huntcam2015@gmail.com



Athene Hunt

ACE Springs Forward

ACE look forward to welcoming old friends and new to their first event for 2026, 'Soup with a Roll' in the Sports Pavilion on Linton Recreation Ground, 12.30pm on Thursday 26th February. There will be a small charge to cover the costs of the lunch.

The Committee will also be taking names and collecting fares for the outing to Springfields Gardens and retail outlet at Spalding on 23rd April. Look out for the posters with more details.

We wish all our friends great happiness and good health throughout 2026. We look forward to welcoming you to our various events through 2026.

Sue Filby

Show Tunes and Symphonies

ON Friday 27th February at 7.30pm LVC is hosting 'Show tunes and Symphonies'. Please do put this date in your diary as it promises to be an evening of memorable singalong tunes, fun listening and a showcase of talent from LVC students as well as the Linton Belles (conductor Rachel Godsill).

Money raised will be split between The Arthur Rank Hospice and the LVC Symphonic Wind band tour fund. Both causes are important to us locally. LVC Symphonic Wind band has been unable to give its musicians the chance to perform abroad since before Covid, but this Summer plans a tour to Belgium, which will be an exciting and enriching experience for our young musicians.

Tickets will be available from ticketsource at £12/£6, including a welcome drink. There will be a bar!

Rachel Godsill

Headscratcher

Number 16

Consider the orbits of Earth and Mars as concentric circles. For simplicity; 150 and 230 million kilometres respectively from the Sun. A year on Earth is 365 days with Mars being 690 Earth days (not Mars days). A rocket leaves Earth at 40,000 km/hr and stays at this velocity until it reaches Mars. What is the shortest time/distance to reach the Red planet?

Answer to number 15

A dodecahedron has 30 edges. If the side length is 2cm then the surface area is 82.58 cm² and the volume is 61.3 cm³.

Aspasia

Friends of St Mary's Quiz Night

THE Friends of St Mary's are holding another of their popular Quiz Nights on Saturday, 21st February 2026, from 6.30pm with the first question at 7.00pm.

To book tickets (£10 per person) please contact info@friendsofstmarysinton.org.uk or 01223 892160.

Baked potatoes with chilli (traditional *con carne* or vegetarian) and salad will be served during the evening. Please bring your own drinks and glasses. Teams can be up to six people, but if you are one or two we will try to combine you with others.

Our Parish Church is a beautiful building, over 900 years old and the only Grade 1 listed building in Linton. The Friends of St. Mary's is a registered charity and was founded in the 1980s to restore, preserve, repair, maintain and improve the church building, fixtures and fittings. Most recently, over £120,000 has been spent on further repair works, redecoration and a new lighting system. The Parish Church receives no money from the Diocese of Ely, the wider Church of England, central government or local councils, meaning that the charity needs the continued support of the local community and other sympathetic 'friends' to carry on this vital work.

Judith Tonry

St David's Day Organ Recital

AT St Mary's, Linton on Sunday 1st March 2026 at 3pm David Parry-Smith celebrates his Welsh heritage with a selection of Welsh favourites, including *David of the White Rock*, and *Rhosymedre*. Be prepared to sing *Land of my fathers*, *Love Divine all loves excelling* and others. Come wearing your daffodil or leek and enjoy a traditional Welsh tea with Welsh cakes and Bara Brith.

Tickets are £12 and should be purchased in advance so that we know how many teas are needed. There may be a few on the door! The funds are raised for St Mary's. Contact events@stmarysinton.org.uk or phone Sue Ellis on 01223 892257

David Parry-Smith

THE LINTON NEWS

Next publication: 2nd March 2026

Deadline for submissions: Wednesday February 11th

Editor: David Watts

editor.linton.news@gmail.com

Advertising Manager: Judith Rouse

adverts.linton.news@gmail.com

Delivery Managers:

Chris & Jenny Murison

delivery.linton.news@gmail.com

Call 893619 for an audio version of the paper

March bin collection dates

Black: Wednesdays 11th, 25th

Blue: Wednesdays 4th, 18th

Green: Wednesday 4th only

Village Diary

A round up of dates from this edition

To be included email: diary.linton.news@gmail.com
Please check with organisers before attending weekly events.

See <https://www.lintonvillagedirectory.co.uk/events> calendar for more details of village events.

FEBRUARY

Tue 3	Scrabble Club, 10 – 12pm	St Mary's Pavilion
Tue 3	W.I. Meeting, 7.30pm	Village Hall
Thu 5	Linton Roots Meeting, 6pm	St Mary's Pavilion
Sat 7	Harp By Candlelight, 7pm	St Mary's Church
Sat 7	<i>Downton Abbey – The Grand Finale</i> (PG)	Balsham Church Institute
	Doors open 7pm	
Tue 10	Camsight VIPs, 2pm	Chalklands Comm. Centre
Sat 14	Linton Roots Repair Café, 2 – 5pm	Village Hall
Sat 14	Valentine's Disco, 7.30 – 11.30pm	Linton Granta FC
Mon 16	West Wickham Gardening Club, 7.30	W. Wickham Village Hall
Tue 17	Scrabble Club, 10 – 12pm	St Mary's Pavilion
Tue 17	Linton Historical Society, 7.30pm	Village Hall
Fri 20	Mary's Community Kitchen, 12 – 2pm	Village Hall
Fri 20	Daylight Readers, 10.30 & 2.30pm	Library
Sat 21	Coffee Morning, 10 – 12pm	St Mary's Church
Sat 21	Quiz Night, 6.30pm	St Mary's Church
Sun 22	Guitar Quartet Concert, 3pm	Thaxted Church
Tue 24	Baroque Music Concert, 7.30pm	Trinity Church, Hildersham
Wed 25	Lent Lunch, 12–2pm	11 Mill Lane, Linton
Thu 26	ACE Soup and Roll Lunch, 12.30 – 3.30pm	Sports Pavilion
Fri 27	Show Tunes and Symphonies Concert, 7.30pm	Linton Village College

MARCH

Sun 1	Organ Recital, 3pm	St Mary's Church
Tue 3	Scrabble Club, 10 – 12pm	St Mary's Pavilion
Tue 3	W.I. Meeting, 7.30pm	Village Hall
Thu 5	Linton Roots Meeting, 6pm	St Mary's Pavilion
WEEKLY		
Mon	Mini Movers, 10 – 11.30am	Cathodeon Centre
Tue	Rhythm and Rhyme, 10.30 – 11am	Library
Tue	Granta Bridge Club, 2 – 4pm	Village Hall
Tue	Knit and Natter, 2 – 4pm	Library
Tue	Linton Lionesses Kickabout, 7 – 8pm	LVC
Wed	Tots in Tow, 9.30 – 11am (term times)	Village Hall
Wed	Warm Hub, 1 – 4pm	Sports Pavilion
Wed	IT Drop In, 5 – 7pm	Library
Wed	Lets Run Girls, 7pm	LVC
Wed	Bellingring, 7.30pm	St Mary's Church
Thu	Stay and Play, 10 – 11.30am	Cathodeon Centre
Thu	Baby Group, 1 – 2.30pm	Cathodeon Centre
Thu	Games Afternoon, 2 – 4pm	Library
Fri	Legos/Duplo, 10 – 11am (1st 2nd & 4th Fri)	Library
Fri	Badminton Club, 7 – 9pm	Comm. Sports Centre, LVC
Sun	Church Service 10.30am	Linton Free Church
Sun	Church Service, 8am and 10am	St Mary's Church

Julie & Jo's

Childcare

01223 891051

LZD DESIGN

Graphic designer & mixed media artist

david@lzd.design

07743 598 544

logos, ads, web, print

WWW.LZD.DESIGN

Wellness with in Reflexology

Mobile Reflexology
Treatments Also Available
In The Comfort Of
Your Own Home

Call Or Email Jeanine
To Book A Treatment

07974 921069
hello@wellnesswithinareflexology.co.uk
www.wellnesswithinareflexology.co.uk

FIRST AVENUE WEALTH

Local Financial Advice

Personal & Business Financial Planning – Protection
Retirement & Investment Planning – Estate Planning
Initial Consultation – Without Obligation

Paul Smith DipFA pm.smith@sipp.co.uk
www.sjp.co.uk/stephenmussard
T. 0870 0493340 M. 07717 803333

Senior Partner Practice
St James's Place

First Avenue Wealth is an Appointed Representative of and represents only St. James's Place Wealth Management plc (which is authorised and regulated by the Financial Conduct Authority) for the purpose of advising solely on the group's wealth management products and services, more details of which are set out on the group's website www.sjp.co.uk/products. The St. James's Place Partnership and the titles Partner and Partner Practice are marketing terms used to describe St. James's Place representatives. First Avenue Wealth is a trading name of Mussard & Co Wealth Management. SJP Approved 20/15/25

COOPER BARNES

Multi Award Winning, family run garage

AUTOMOTIVE

- Annual Servicing
- Diagnostics
- Brakes & Tyres
- Air-con Servicing
- 4 Wheel Alignment
- MOT's
- General Mechanical
- Health Checks

FREE Collection & Delivery for Linton & surrounding villages

Unit 4, The Grip Ind Est
Linton
CB21 4XN
01223 880603
repairs@cooperbarnes.co.uk

G. DYE & SONS

GENERAL BUILDERS,
GROUNDWORK & MAINTENANCE,
CONSERVATORIES & UPVC WINDOWS, KITCHEN & BATHROOM REFITS

ALSO INTERIOR & EXTERIOR DECORATING

REFERENCES AVAILABLE

For enquiries please call
Mobile:
07961 342887
Tel: 01223 892089
georgedye738@btconnect.com

Free Estimates

etcetera

Vintage & Collectibles

The Garden Room, rear of
94 High Street, Linton, CB21 4 JT
opening hours 10.00-5.00
Wednesdays - Saturdays
NOW OPEN

BUILDING SERVICES

MATT LAWRENCE BUILDING SERVICES

- BRICKWORK
- EXTENSIONS
- PATIOS
- FLINTWORK
- PLASTERING
- WALL & FLOOR TILING

07984 615289
MATTLAWRENCEBUILDINGSERVICES@GMAIL.COM

News from the Heights

LINTON Heights Junior School is pleased to share the news that its long-awaited front-of-school extension was completed just before Christmas, marking an important milestone for the school community. First announced last summer, the project experienced several unavoidable delays, but the finished building is now open and proving its value.

The new extension includes a modern, welcoming reception area, improved office and meeting space, music room and a larger staffroom. These improvements have enhanced the experience for visitors and families, whilst also providing much-needed space and better facilities for staff.

A particular highlight is the new reception layout, which offers a professional environment for signing in and welcoming guests.

Funded through the Anglian Learning School Conditions Allocation (SCA), the project required flexibility and patience from many people. The school thanks local residents for their continued patience and understanding during the extended building period. We are also grateful to parents and carers for their support, and to staff and children for their adaptability throughout the disruption.

With the building work completed, several facilities are available for community hire during evenings, weekends and school holidays. The large school hall is ideal for parties and events. In addition, we have a small meeting room/office space and a new music room accessible externally. This space offers an excellent practice environment and is equipped with an upright Yamaha piano, digital drum kit and music stand, perfect for musicians looking for a private rehearsal space. Please see our website for more information on hiring our facilities: www.lintonheightsjuniorschool.org/room-hire or email office@lintonheightsjuniorschool.org

Caroline Webb

Escape the Everyday

FEBRUARY is the perfect time to start planning your next holiday. Whether you're dreaming of sunshine, family fun, or a relaxing getaway later in the year, I'm here to help.

I'm a Linton resident, running Joanne's Global Escapes from home, offering a friendly, local and personalised travel planning service.

As an independent travel agent, I work with trusted suppliers to find the best options and value, while giving you one reliable point of contact from start to finish.



You can contact me on 07828 270999.

Email: joannehall84@outlook.com

Visit my website: joannehall84.inteletravel.uk

Joanne Hall

News from the Infants

WHAT an exciting return to school, snow and enough of it to enjoy building snowmen in the playground! Although, how changeable it is. As I write this, the sky is grey and rain is on its way. The weather is so variable in these winter months.

Santa delivered early here at Linton Infants. On 18th December, a team of audio visual specialists arrived at 7am to install new interactive whiteboards into each classroom!

The existing whiteboards were very old and although they had served the School well, they were now at the stage where replacement parts could not be sourced.

The new whiteboards have already made such a difference to the learning for the children who are amazed with the technology! This project was partly funded by our PTFA, thank you to them for their support.

The Admissions window for those children hoping to start with us in September 2026 has now closed and offers of places will be made on 16th April 2026. Please watch out for information regarding our New Parents Meeting in May and opportunities for the children to spend some time in school before September.

Kelly Harries

Thank You from EACH

A MASSIVE thank you to everyone from Hildersham, Abington and Linton who came out to see Santa's sleigh pass through our villages on Christmas Eve.

The Elves collected for EACH (East Anglia's Children's Hospices) and together we raised £667.53.

We have received a letter from EACH expressing their heartfelt thanks for our ongoing support. Your generosity means so much to them, the children and young people in their care along with their families. Thank you.

Jeanette Long

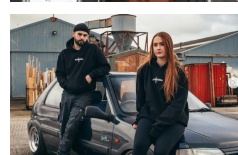
Young Entrepreneurs

CAMBRIDGESHIRE Community Foundation has partnered with SWEF to launch grants of up to £2,000 for aspiring entrepreneurs aged 18-30 across the county.

Why are we doing this? Research shows that 79% of young people from disadvantaged backgrounds cite lack of funding as the biggest barrier to starting a business. Many have the drive, skills and ideas – but lack the capital for essential equipment, marketing, or training that could transform their venture from an idea into a viable income source.

SWEF exists to remove this barrier.

Since launch, they've awarded over 1,000 grants nationally.



Available grants:

Start-Up Grants – Up to £500 for those just getting started
Business Grants – Up to £2,000 for established young businesses

You can apply for a grant from this fund if you:

- Live in Cambridgeshire
- Are aged 18 to 30
- Are launching or running a new business that has been trading for under 2 years
- Need support with business costs that you would otherwise not be able to afford

For further details see the fund page: www.cambscf.org.uk/funds/swef

Julia Cieslak

February at Linton Library

IT MAY be cold, dark or raining outside but here in the library you'll always find a warm and friendly welcome. Relax with a jigsaw puzzle, find a new author or use our free Wi-Fi.

2026 is the National Year of Reading (www.goallin.org.uk) and we want to encourage everyone to get into reading!

Book groups are a great way to make new friends, discover new, different authors and titles and get more enjoyment from reading.

Two groups meet at Linton Library every third Friday, and the morning group would love to welcome new members.

This month the Book Groups meet on Friday 20th, one at 10.30am and the other at 2.30pm.

Rhythm & Rhyme: Tuesday mornings 10.30-11am for 0-4 years (term time only), followed by Duplo. We would love to see you and your little ones there!

Knit and Natter: every Tuesday, 2-4pm. Bring along any craft project you're working on.

IT Drop In: every Wednesday 5-7pm, knowledgeable volunteers are here at the library to offer help with Information Technology.

Games Afternoon: weekly, Thursday 2-4pm. Come and meet new people. Board/card games are provided or bring your favourite to share.

Lego/Duplo: Friday 10-11am, weekly (every 1st, 2nd & 4th Fridays). Come along and entertain your 0-4 year old.

Vicky Anandraj and Ann King,

Community Library Assistants, Linton Library

Opening hours: Tuesday 10am-5pm; Wednesday 4-7pm; Thursday 2-5pm; Friday 10am-5pm; Saturday 10am-1pm.

McKenzie & Haywards Garage Ltd

MOT by appointment while you wait
Servicing, Collection & Delivery Service

Unit 3 & 4, Lintech Court
The Grip Industrial Estate
Linton, Cambs
CB21 4XN

Tel : 01223 894140
Fax : 01223 890035
mhgarage@btconnect.com

Singing Lessons

Sarah Rosewell
BA (Hons) Music

Individual singing lessons available for all ages and abilities
Whether towards exams or purely for pleasure

- * CRB Checked
- * Based in Linton

For more information contact:
Sarah on 01223 894861

Email: sarahrosewell@hotmail.com

ABC tree surgery
Local, reliable Arborist based in West Wickham. Able to deal with all tree surgery works. Fully insured and qualified.

rob@abctree.co.uk
www.abctree.co.uk

07919343321

ADAMS HARRISON SOLICITORS

3 OFFICES IN 3 COUNTIES

- Residential Conveyancing
- Matrimonial & Family Law
- Wills, Tax Planning & Probate
- Employment Law
- Dispute Resolution
- Commercial Property
- Trusts

We have the experts to assist you when you really need us.

Saffron Walden, Essex 01799 523441
Haverhill, Suffolk 01440 702485
Sawston, Cambs 01223 832939

enquiries@adams-harrison.co.uk
www.adams-harrison.co.uk

CAMBRIDGE COMPLETE PHYSIOTHERAPY

Jo Snell
Chartered Physiotherapist & Veterinary Physiotherapist

Mobile physiotherapy service for Human, Horse & Hound

0788983928
admin@cambridgecompletephysiotherapy.com
www.cambridgecompletephysiotherapy.com

TIM PHILLIPS & Co. Accountants
Established 1991

Independent, specialist service for:
Small Business • Self Assessment
Personal Taxation

Free initial consultation – no obligation
EASY, FREE PARKING

Copley Hill Business Park, Cambridge Rd., Babraham
Off A1307 between Wandlebury and Babraham
Tel: 01223 830044. www.tpaccounts.co.uk

YOU BEAUTY CAMBRIDGE

YOUR LOCAL BEAUTY SALON

Check us out at
5 Balsham Road, Linton
Cambridge CB21 4LD
youbeautycambridge.co.uk
01223 668400

NRS CARPETS

HOME SELECTION
FREE MEASURING & ESTIMATING
All types of flooring available
Tel: 01223 893634
Mobile: 07885 173113

100 Parishes

THE walk descriptions that can be downloaded from The Hundred Parishes website refer to many interesting buildings along each route. Some of the larger and more ancient homes are described as hall houses, having been constructed as a communal hall with one or two wings at the side. The hall would have been heated by a log fire in the centre of the room, its smoke drifting upwards through vents in the roof.



Chimneys at Stansted Hall

The hall house design fell out of favour, mainly during the period 1550 to 1650 AD, when it became fashionable to install a fireplace against a wall, complete with a flue or chimney which took away the smoke and also provided an upward draft to encourage the fire to burn.

Where the flue or chimney breached the roofline, it often continued upwards as a chimney pot. In grander houses, these became fashionable accessories, and a good number survive today.



Tudor Chimney in Newport

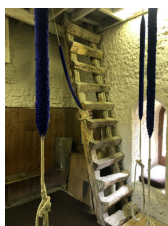
During the 19th century, more and more houses had fires and now they tended to be fuelled by coal. Chimneys became narrower and their pots were less ornate. Fireplaces would be installed in multiple rooms, so houses might have several chimneys.

From mid-20th century, open fires were largely replaced by various forms of central heating and chimney pots are not usually required on new houses. Older pots are sometimes removed before they need maintenance.

Ken MacDonald

Stairways to Heaven

EVERYONE knows that most churches have towers. Linton people know that towers like ours and many others have bells - because they are high enough up to be heard around the village. Some people think that the towers point to Heaven. But few people wonder how you get up there for practical purposes. So here are some local examples that may interest you.



Linton's mediaeval ladder is on the left.

Hildersham's ladder, same date but rather more scary is on the right.



Bartlow, shown below, a modern ladder but even more scary. The circular tower is Norman and contains three bells still hanging in their original oak frame, all dated about 1440 and the oldest such case in the country.

Bell ringing is a pastime that many in the village enjoy. We welcome beginners and more experienced ringers. We practise on Wednesday at 7.30pm in St Mary's Church, Linton.



Henry Bennett

Repair Café

HAS your vacuum lost its va-va-voom, your food mixer is beyond beating, your strimmer stumped, or your favourite jumper worn out?

Book in and bring your old broken household and garden items, jewellery, toys and clothes to our volunteer repairers to see if we can give them a new lease of life. The Linton Roots Repair Café will take place on Tuesday 14th February 2-5pm, at Linton Village Hall. There will be a café too, so you can enjoy a cuppa and cake! While we cannot guarantee to fix your much-loved item, we usually have good success. All for free, though donations will be welcomed to help cover costs and support future repair cafes!

Book in by 7th February via the QR code or email us for a booking form at: linton-roots@outlook.com A few spaces will be available for walk-ins on the day; please come just after 2pm and by 4.30pm if you cannot book in advance.

Why not make new friends and join us? Please contact us by Tuesday 7th February if you can help with the repair café either as a general volunteer, cake donor or a trainee repairer. Be part of supporting local sustainability, skills sharing and wellbeing!



Yannick, Kirsten and the Linton Roots Team

Linton and District Historical Society

AS we emerge from the grips of extreme cold and dark wintry conditions, please feel welcome to join us as we head into 2026. Following stories from Borley Rectory in January, we welcome Duncan Bickley to share his *Helicopter Adventures*. This is on Tuesday 17th February starting 7.30pm in Linton Village Hall, Coles Lane Linton. There is ample free parking in the Health Centre car park opposite.

In March we welcome the return of local historian Charmian Thompson to enlighten us about the *Waltons of Haverhill*. Slightly further afield on 21st April, Phillip Stott will tell us about the *Darwin Family of Cambridge*, and on 19th May, Anne Stott will bring to life *The Other Princess Charlotte*.

Members of our group have recommended this programme of speakers as they have found the topics to be extremely interesting and are sure other members of the society will agree.

For further details of the LDHS please email ldhscams@gmail.com or 'phone 01223 893915 or 01223 678835

Margaret Creek

Linton WI

ALTHOUGH it was a very cold evening, 15 members and two guests attended our first meeting of 2026, eager to get fit for the New Year. Helen Regan took us through a 45-minute programme of gentle seated Pilates exercises, which we plan to continue at home. Of course, this was followed by tea and biscuits.

The speaker at our next meeting, on Tuesday 3rd February at 7.30pm, will be Alan Osborne talking about *The Discovery of DNA*.

New members welcome. Visitors: £5.
Enquiries: 07963 796744.

Liz Cox

Camsight VIPs

The Cambridgeshire charity for people of all ages with sight impairment and blindness.

In December we were delighted to welcome to our Christmas lunch meeting some Year 6 pupils and their teacher Mrs Mason, who sang a delightful selection of Christmas songs and carols. This followed a traditional Christmas lunch of turkey and vegetables, then trifles, mince pies, chocolate mints and coffee to follow.

We started the New year with a visit from Peter Day of Jukebox Legends, who sang a selection of hits from the 50's and 60's featuring Cliff Richard, Elvis Presley, Buddy Holly, Tommy Steele and other favourites, which had feet tapping and voices soaring as we all joined in. It was a very jolly session, followed by our afternoon tea and raffle.

Our next meeting will be on Tuesday 10th February at 2pm at the Chalklands Centre. If you would like any further information, please contact us on 01223 420033, or on 01223 893595

Jean Mannion

LINTON VILLAGE MOTORS

(situated in Great Abington opposite Granta Park)
www.lintonvillagemotors.co.uk

Tel: 01223 830550

- MOT testing
- All makes of vehicles serviced and repaired
- Tyres at competitive prices
- courtesy car provided
- Polite and friendly staff



Mon-Fri: 8.30am-5.30pm Sat: 8.30am-12.30pm

ADMIRAL ESTATES

LINTON AND CAMBRIDGE LETTINGS

- Family Run Business - Linton Specialists for 25 Years
- Refreshingly High Standards - Google Rated: 5 Star ★★★★★ Local Agent
- Experienced, Fully Regulated, Qualified & Compliant

Check Out Our Google Reviews: Cambridge Office or Local Linton Office.

If You Need a "TOP QUALITY LEVEL OF SERVICE" Why Not Call Us?

Call us Now: 01223 891227

www.admiralestates.co.uk

Checkatrade.com

★★★★★

9 Linton based



SOLON ELECTRICAL

-Fully licensed electricians-

Rewires, new sockets, lighting upgrades, EICR reports, EV chargers, fuse box upgrades and more!

PHONE: 07848 681486

EMAIL: info@solonelectrical.co.uk

Call today for your free no-obligation quote

Cook Stars
Haverhill to Newmarket
Fun Cooking Classes
for Children

Linton Village Hall
Mondays 4pm - 5.15 pm
(Term time only)



Ages
2 - 11 yrs

Call Tanya 07712 160 620
Email: tanya@cookstars.co.uk
Book: <https://finder.cookstarsfrance.co.uk>



EVERYTHING
provided!
Craft activity plus a
recipe card to
take home!



SCAN ME

ClearTax

& ACCOUNTING LTD

Quality, friendly accounting
services and taxation advice.

Sole trader and small
company specialist.
Free initial consultation.

▼ We have a new address ▼

Unit 1, The Old Stables, Yole Farm,
Linton Road, Balsham, CB21 4HB.

01223 772326

janine@cleartax.co.uk
www.cleartax.co.uk

Linton Complementary Health Centre

2b Bartlow Road, Linton, CB21 4LY

- Acupuncture, Peter White; MSc, MBACc
- Shiatsu, Cindy Faulkner; BA, MRSS
- Massage, Peter White, Dip.Mass

Telephone: 07757 257530

Email: enquiries@lintonhealth.co.uk



CASTLESIDE ELECTRICAL

castlesideelectrical@gmail.com

07795595856

Electrical installations
Re-wiring and repairs
Fault finding

Testing and inspection
PAT testing
New builds & Extensions



Country Matters

Text by Oriel O'Loughlin, illustrations by Maureen Williams

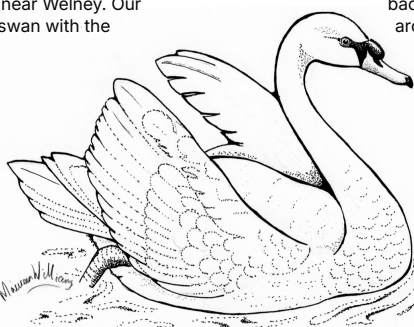
Swans Awake!

A 5.30am START to join about 15 others at Welney led to a fantastic swan experience on the day after Boxing Day. Many people visit Welney to watch the swan feeds at noon and at dusk during the winter, but perhaps only the bonkers head off in the pitch black.

Welney is one of the Wetland and Wildfowl Trust's UK sites and it takes about 50 minutes to drive there from Linton. It is on the Ouse Washes, a vast man-made floodplain usually under water for most of the winter. It is the largest in the UK, running diagonally southwest to northeast from Earith to Downham Market, and initially built when the fens were being drained in the 17th and 18th century. In the last few years the walls have been significantly increased in height to prepare for the possibility of more serious flooding in the future. Over the decades thousands of swans have overwintered at or near Welney. Our most common swan, the mute swan with the black blob on its orange bill, may be seen in small numbers at Welney year round. In winter they are joined by thousands, and it can be up to 10,000, of whooper swans, and these days a very few bewick swans. The whooper swans have yellow bills, and are smaller than our regulars, and come down from a particular part of Iceland where they spend the summer. The bewicks come from Russia and they are also yellow billed and a similar size. Experts can tell the difference at 100 metres. I can't.

The point about the early start is to watch the swans leaving Welney to head off to the local arable fields where they are welcomed by some farmers and not so welcomed by others. They eat potato tops and sugar beet tops, but

can stray onto newly planted areas as well. We walked out to the furthest hide, in my case wearing 3 layers below and 5 layers on top, and prepared for daylight. We listened to the sounds of thousands of swans and ducks right in front of us and in the distance, and saw them starting to wake up and prepare to leave for breakfast elsewhere. They chatter and clatter and trumpet and go off in small family groups, having somehow decided exactly when and where to take off. It really is a wonderful spectacle, even for regulars. The excellent warden gave us a running commentary about their numbers and habits, and how each has changed over recent years, affected by climate change among other factors. After about an hour the last swan had left, and only the ducks and other birds remained. We went



back to the heated hide, just slightly less arctic, and watched all the nearby ducks and resident swans being fed. There was a good haul of other birds to see. With glorious sun in exactly the right place, we saw around 1,200 godwit, thousands of pochard, wigeon, tufted duck, gadwall, mallard and exactly two goldeneye in the distance. There were hundreds of lapwing taking off and landing regularly, four marsh harriers, ten pintail, two snipe, four egret, six shelduck, fifteen curlew and a barn owl right near

the visitors centre.

The experience costs £25, but for this you get expert guiding, use of binoculars and telescopes and an excellent and extremely welcome breakfast afterwards at the visitors centre. It takes place every other Saturday in the middle of winter.

Linton FROG Litter Picks and Citizen Science 2026

OUR litter picks are now listed on the Keep Britain Tidy website: <https://www.keeptidytidy.org>. On the home page, enter your postcode in the box labelled 'Find a litter-picking event in your area' to see nearby registered litter picks on an interactive map. You can also register and log your solo litter picks!

Please make a note of our main litter pick dates this year:

- Saturday 21st March (Great British Spring Clean), 10am–12pm at the Village Hall.
- Sunday 7th June (Great Big Green Week), 10am–12pm at the Village Hall.
- Saturday 25th July (Love Parks Week), 2pm–4pm at the Village Hall.
- Saturday 26th September (World Rivers Day weekend), 10am–12pm at the Village Hall.
- Sunday 8th November (post fireworks pick), 10am–12pm at Linton Infant School (to be confirmed).

Are you interested in becoming a citizen science volunteer? No experience is necessary. You can learn as you go and there is no need to commit to every week or month.

- ARMI riverfly sampling: Monthly, usually weekend mornings, at the Recreation Ground.
- Greater Cambridge Chalk Stream Project water sampling: Weekly (Monday/Tuesday) at Leadwell Meadows, also known as Pocket Park.

We hope you can join us for at least one litter pick or event. We are planning more walks, talks and film screenings, offering plenty of opportunities to get involved! You can contact us by email at lintonfrog@gmail.com or by phone on 07812 988917. You can also find us on Facebook (LintonFROG) and on X (@OfGranta).

Helen Brookes

West Wickham & District Gardening Club

ONE of the pleasures of February is planning what to plant through late winter and spring then flicking through tasty recipes in anticipation of future harvests! To whet our appetites for the months ahead, February's talk is about growing your own fruit and veg, whether that's in a container or an allotment – the satisfaction is just the same.

Expert and enthusiast, Nigel Start will tell us *How to achieve self-sufficiency from your garden*. A much-anticipated event by Club members, Nigel has been growing most of his fruit and veg in his garden in South

Cambridge for over 15 years and will share his knowledge on how to get the best from your harvest. Members (free entry) and non-members (£2) are equally welcome. The talk is at 7:30pm on Monday 16th February at West Wickham Village Hall with tea and coffee served afterwards.

For those of you who might be considering joining, we have an exciting programme leading up to our 16th May Plant Sale including

- Monday 16th March talk by Tim Fuller on *New, rare and unusual perennials*.

- Monday 20th April talk by Hawk Honey on *Wasps and their role in our gardens*.

This month's notable news is that we are now members of Plant Heritage. Follow this link to find out more www.plantheritage.org.uk/groups/cambridgeshire. For more information contact Sally Collins on www.dgc@westwickham.org for information about the Club and Alice and Andy Mitchell on photo@westwickham.org for information and queries about our annual photo competition.

Sally Collins

THE DUG & DUCK
63 HIGH ST, LINTON
01223 890349

LIVE JAZZ - FIRST SUNDAY EVERY MONTH

2 MEALS FOR £20 OFFER
ALL DAY WEDNESDAY
ALL DAY THURSDAY
LUNCH TIME FRIDAY

HAPPY HOUR
WED - FRI
3PM - 6PM

WWW.DUGANDDUCKLINTON@GMAIL.COM
FOR ALL INFORMATION

www.AllstarCleaning Ltd
www.allstarcleaning.me.uk

Your Local, Professional, Carpet and Upholstery Technician Dean

16 years' experience

Package to suit every level: Basic, Pet Treatment or Carpet Protector

cleansmart trained technician

Carpet moth removal and prevention
Upholstery and rug cleaning services

Contact Dean on 01223 654652 or info@allstarcleaning.me.uk to make an appointment.

Allstar Cleaning, 14 Hillway, Linton, CB21 4JE

RDM | Accounts

Accountancy & Bookkeeping Services

01223 667000
07850 007111

enquiries@rdmacounts.com

Linton • Haverhill • Cambridge

Westlakes
PAINTING & DECORATING

Interior & Exterior

Mobile:
07917890752

adam_westlake@hotmail.com

LINTON PAVING COMPANY

YOUR LOCAL LANDSCAPING
BLOCK PAVING & PATIO
SPECIALIST.

PROPERTY MAINTENANCE
Int/Ext Painting, General Repairs
FRIENDLY SERVICE.
FREE QUOTATIONS
Tel: Andre Jacobs

Mob:
07765 594398
Office:
01440 702498

zigzagpilates

• Qualified Body Control Pilates Teacher.

• Classes and 1-1 sessions

• Specialising in older and less able clients.

Contact Rachel 07905105081
Rachel@zigzagpilates.co.uk
www.zigzagpilates.co.uk

P.B MAINTENANCE HANDYMAN

GENERAL MAINTENANCE
FENCE, GATE REPAIR
SHEDS

SMALL CARPENTRY JOBS
SMALL PLUMBING JOBS
FLAT PACK ASSEMBLY
ODD JOBS
NO JOB TOO SMALL

pb.maintenance@yahoo.com
Tel: Paul 07816310197

PLUMBLINE
PLUMBING AND HEATING ENGINEER

FRIENDLY AND RELIABLE SERVICE

Call John on
01223
893903

supcikitalk@net

No Job Too Small

MOPS HAIR SALON

HAIR BY JO DENNY
WOMEN | MEN | CHILDREN
CUTTING & COLOURING

41 LINTON HIGH STREET
(BEHIND BOSWELL'S BAKERY)
t: 01223 893 285

District and County Councillors' Report January 2026

GRANGE Farm

In late 2025, the District Council released their draft Local Plan covering the next 20 years of development in South Cambridgeshire and Cambridge City.

The major proposal for our area is Grange Farm—a new town of up to 6,000 homes, roughly three times the size of Linton. It's sited here due to proximity to employment hubs like Granta Park and Babraham Research Park, and major roads including the A1307 and A11.

Public consultation ran from 1st December to 30th January. The Parish Council held a local event on 14th January at the Abington Institute, where planning officers presented the Grange Farm proposals and answered questions.

Details are available at <https://greatercambridgeplanning.org/local-plan>.

Local Government Reorganisation

Local authorities in Cambridgeshire have submitted their proposals for new unitary authorities to central government. We're now waiting for the government to review these options and consult the public on their preferred choices in the coming months.

Kingsway Solar

Thank you to everyone who responded to last year's public consultation. All comments will be sent to the planning inspector who decides on this proposal.

The government recently changed planning law to speed up the NSIP process for Nationally Significant Infrastructure Projects like Kingsway Solar Farm. Whether this improves delivery or reduces scrutiny remains to be seen.

If you want to read the full change, you can do so here - <https://www.gov.uk/government/publications/the-planning-and-infrastructure-bill/guide-to-the-planning-and-infrastructure-bill>. Key changes include:

1. Faster delivery of Nationally Significant Infrastructure Projects (NSIPs)
 2. Fewer opportunities to legally challenge government decisions on major infrastructure
 3. Development corporations given transport powers for New Towns and large developments
 4. Combined Authorities must now create Spatial Development Strategies
 5. More strategic nature recovery approach
- Streamlined compulsory purchase and land compensation rules

Weekly Food Waste Collection

Food waste collection changes this year. Every household will receive a separate food caddy, collected by the District Council alongside existing bins.

This follows new DEFRA regulations requiring food waste to be collected separately from other waste, including the green bin.

Full detail at - <https://www.scambs.gov.uk/news/greater-cambridge-councils-set-out-arrangements-for-new-weekly-food-waste-collections>

Happy New Year

Contact Details

District Council – John Batchelor – johnbatchelor23@gmail.com

District and County Council – Henry Batchelor – henrybatchelor89@gmail.com

Planning Applications between 10th December and 14th January

23/00488/CONDD Submission of details required by condition 3 (door furniture) of Listed Building consent 23/00488/LBC. Linton Village College Cambridge Road Linton Cambridgeshire CB21 4JB. Validated: Monday 12th January. Status: Awaiting decision.

26/0023/TTCA T1 - Thuja - Fell and remove since oversized for location and overshadowing garden. 100 High Street Linton Cambridgeshire CB21 4JT. Validated: Friday 9th January. Status: Awaiting decision.

25/05047/TELNOT Installation of 1 10m light wooden pole. OS 1 The Furrells Linton Cambridgeshire CB21 4JJ. Validated: Monday 29th December. Status: Awaiting decision

25/04541/OUT Outline application for the erection of up to 230 dwellings including affordable and self/custom build plots, along with a new site for a doctor's surgery, open space, allotments, and associated infrastructure, with all matters reserved except access. Land North Of Cambridge Road Linton Cambridgeshire. Validated: Thursday 18th December. Status: Awaiting decision

25/04808/LBC 25/04687/HFUL Alterations and repairs including internal changes to layouts of rooms, new heating system and removal of paint. External alterations including fenestrations changes including replacement of windows and roof lights and addition of secondary glazing, ceiling height & roof changes Reinstate gates and reposition timber posts, mechanical extraction & grilles, addition of vertical timber boarding to external walls and raising of ridge of existing single-storey flat roof rear projection, replacement of cast iron gutters & downpipes and repoint and refaunch existing chimneys and install stainless steel flexible flue liner in existing chimneys. Fulwells 97 High Street Linton Cambridgeshire CB21 4JT. Validated: Monday 15th December. Status: Awaiting decision.

An update from your local MP, Pippa Heylings

SOME of you may have seen footage of me from Parliament with a bandage on my hand – and that is because I took an unfortunate fall while out walking in the countryside during the holidays and broke my finger. Thank you for all the concerned comments and well wishes and rest assured this has not stopped me from getting stuck in now that we are back and already into February.

2026 promises to be a big year for our area with changes to the Integrated Health Board (the way our NHS services are organised) and local government reorganisation on the horizon. The local elections in May this year will be the last ever set of local elections for South Cambridgeshire District Council and are important as they will decide the political makeup of the new unitary authority.

Eight years ago, South Cambridgeshire District Council was on the brink of being declared a failing authority – now it is one of the best run councils in the country. The council is investing in the things that people often tell me matter most to them – like tackling the cost of living, supporting our healthcare services, building affordable homes for local people, and protecting our green spaces & environment.

I continue to stand up for residents who are concerned about the large Kingsway Solar project. I met with the Minister for Energy and told him how disappointed I was with both the design of the proposal and the standard of answers being given to constituents at the consultation drop-ins. I pressed the minister on timings for the publication of rules that need to be in place, demonstrating with Kingsway that there is a Wild West environment with developers racing ahead with poor standard plans that undermine local voices.

Specifically, I asked the Minister what action is being taken to ensure a clear Land Use Framework to identify suitable locations; that the Spatial Energy System Plan is used to plan infrastructure efficiently; and that there is a mandatory requirement for community benefits. I also pressed the minister on the need for safety regulations for battery energy storage systems infrastructure.

I am working with local councillors Geoff Harvey and Henry Batchelor to ensure that the developer addresses residents' concerns. As the Liberal Democrat Spokesperson for Energy Security and Net Zero, I will continue to push the Government to ensure the transition to clean energy is safe, efficient and fair for our communities.

These are just a few of the things I've been working on over the last few months that I wanted to share with you. If you would like to keep up to date with my work, you can register for my e-newsletter, available at www.pippaheytings.org.uk/newsletter.



Pippa Heylings MP

- 24 hour emergency service
- Boiler breakdown and servicing
- Boiler upgrade

KA PLUMBING & HEATING

Office: 01223 890554
Mobile: 07890 576608
kaplumbingheating@hotmail.co.uk



Interior/Exterior Decorating
Fencing, Guttering
Turfing, Garden Clearance
Lawn & Hedge Cutting
Decking & Patio Cleaning
Patios & Driveways
Call on
(01223) 892889
or 07973 294946
No job too small...



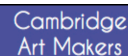
**VERTICAL, ROLLER AND
VENETIAN BLINDS
SUPPLIED AND FITTED
FREE QUOTATIONS
FREE HOME VISIT**

**TEXT ONLY
07774168833**

or email colin@capriblinds.co.uk

ALL BLINDS ARE MADE IN ENGLAND
- FAST LOCAL SERVICE

Visit capriblinds.co.uk



A friendly and inspiring
workshop and studio.
Expert tutors offering a
diverse array of dynamic,
engaging creative courses.



Make time for Making!
Claim your creativity it's
good for you!

6 Lintech Court, Linton
www.cambridgemakers.org



A local family run business with
over 30 years' experience in the
trade.

All enquiries welcome with a free
quotation on all jobs.

All aspects of scaffold undertaken;
no job too small.

Contact Martin on:
Tel: 01223 892145
Mobile: 07970348182
palmerssc scaffolding@outlook.com

Horizons of Light By Tor Hjaltun

January 7th to February 14th 2026
Opening hours 10:00 – 5:00
Wednesdays to Saturdays

"Art is the soul's voice made visible -
where imagination breathes, emotions
speak, and truth transcends the
boundaries of the ordinary." Tor Hjaltun



94 High Street, Linton, Cambridgeshire CB21 4JT www.galleryabove.co.uk
T: 01223 894899 M: 07909 981827 E: rosiewellings@aol.com

A J Pest Control Ltd

Local Professional Service
Member of NPTA
Domestic/Commercial/Agricultural
Experts in all areas of pest control

Mice, Rats, Wasps, Bees, Hornets, Moles, Moths, Ants,
Bed Bugs, Fleas, Flies, Squirrels, Birds, Woodworm.

Tel: 01799 542 505 Mobile: 07855478824
E-mail: info@ajpestcontrol.com www.ajpestcontrol.co.uk



Bentens

Accountants and Tax Advisors

Abbey House, 51 High Street
Saffron Walden

01799 523053 www.bentens.co.uk

Parish Council Matters



Parish Council Matters is written, edited and published by the Parish Council with the support of the Linton News Team

Grant Awards 2026-27

Grants for 2026-2027 have recently been awarded to a variety of groups and organisations in Linton.

Applications are assessed each year in November and where the Parish Council feels able to assist it will ensure that financial support is in place in April of the following year.

If you are a local organisation and would like more information on how to apply, please contact the Linton Parish Council office.

Linton Library has been awarded a £300.00 contribution towards the annual Summer Reading Challenge. Full details will be available at the Linton Library.

Linton Music Society has been awarded a £2000.00 contribution to hold five classical music concerts in 2026.

The 9th Linton Bookfest has been provided with funding of £4000.00 to continue this very popular event which is taking place in May 2026.

Linton Netball (Adults, Juniors and Walking) have been awarded a total of £1570.00 across the three clubs to assist with coaching, kit and equipment.

Linton Village Cricket Club have been supported with a grant of £1050.00 for match equipment and grants of £748.00 and £90.00 to purchase grounds maintenance equipment.

Linton Granta Football Club have been awarded £500.00 to purchase specialised trolleys to assist with the movement of goalposts.

Relate (Cambridgeshire) will continue to provide specialist counselling services to residents of Linton. The award granted of £650.00 will ensure this service is available to Linton residents if they need support.

The Linton Visually Impaired Group (Linton VIP) will use funds of £300.00 for speakers and lunches throughout the year.

St Mary's Church has been awarded £1000.00 towards replacement boilers to ensure the venue can be used year-round by all parishioners.

Linton Free Church will receive a contribution of £2500.00 towards the refurbishment of the kitchen.

Age UK provides the Community Warden Service in Linton which focuses on providing support for those wishing to continue living in their own home, safely and independently. LPC has awarded a financial contribution of £8,000.00 to help keep service costs affordable.

The Beacon Youth Trust Service Level Agreement continues into the second year, providing Youth Services in Linton. This includes weekly drop-in sessions held at the Youth Hub on the Recreation Ground.

Do come along to the Annual Meeting of the Parish on the 12th of May 2026 to meet representatives from the groups and organisations to find out more about what they do for our community.

Information on projects will be available to view and comments from parishioners will be invited.

Everyone is welcome and refreshments will be provided.

Responsible Financial Officer - LPC

Traffic Matters

LOCAL Highway Improvement 23/24 (LHI)

The Local Highway Improvement 2023/2024 is almost complete. The improvements included additional parking restrictions on the High Street, parking bays near the Dog & Duck, including provision of disabled parking, and an additional Mobile Speed Indicator Device (MSID).

LPC have contacted Cambridgeshire County Council (CCC) in relation to the section missed on the double yellow lines and have been assured that this will be completed in due course.

20mph Scheme

The 20mph scheme, which the majority of those who took part in the public consultation were in favour of, will be implemented in Linton soon. It is hoped that this will help reduced traffic speeds in the village. Parishioners requested traffic calming measures be considered in conjunction with the 20mph scheme following concerns that the reduction of the speed limit alone would not address the issues in Linton.

Local Highways Improvement Bid 2026-2027

At the meeting held on 15th January 2026, the Parish Council voted in favour of submitting the LHI bid to install physical traffic calming measures on Horseheath Road.

The previous and most recent polls on social media showed that parishioners were in favour of the scheme, especially to support the reduction in speed through the village. An update will be shared after the presentation to the CCC LHI board who make the final decision on the application.

Speed Limit Reduction proposal on Cambridge Road

CCC has published a proposal to introduce a 30mph speed limit on the A1307 from The Grip to the Linton Village College.

At the meeting held on the 15th of January 2026 Linton Parish Council agreed comments which have been submitted to public consultation by CCC. The public consultation concluded on the 30th of January 2026.

MSID Reports - LPC

Linton has two Mobile Speed Indicator Devices (MSID) which are moved through ten approved locations in the village to monitor traffic volume and speed.

The Year-to-Date MSID reports are available on the Linton Parish Council website using the link below.
<https://linton-pc.gov.uk/msid-reports>

Community Speed Watch in Linton

The Community Speed Watch group is active in Linton. Data captured during the weekly sessions includes:

- speed
- registration number
- vehicle colour and make

Anyone caught speeding will be sent a letter from the Cambridgeshire Constabulary (C.C) informing them of their offence. C.C will also monitor the data so they can act against repeat offenders or those severely breaking the speed limit.

If you are keen to help reduce speed in Linton and would like to volunteer for Community Speed Watch, please contact the Parish Council office for further details.

Clerk - LPC

Planning Update

Little Linton - Proposed development

Planning reference: 25/04541/OUT
Land North of Cambridge Road Linton Outline application for the erection of up to 230 dwellings including affordable and self/custom build plots, along with a new site for a doctor's surgery, open space, allotments and associated infrastructure, with all matters reserved except access.

<https://applications.greatercambridgeplanning.org/online-applications/applicationDetails.do?activeTab=dates&keyVal=T68AHNDXGFZ00>

The Greater Cambridge Shared Planning (GCSP) determination date of the application is the 19th of March 2026. Public comments must be received before this date.

Kingsway Solar Farm

Kingsway Solar Farm Limited is developing proposals for a new solar farm and overhead line connection to the national grid between Burwell and Balsham in Cambridgeshire (the "Scheme").

The Scheme would have capacity to generate around 500 megawatts (MW) of electricity, the equivalent of powering approximately 175,000 homes annually. It would also include associated infrastructure, including co-located battery energy storage systems (BESS) and inter-array connections to link together the land parcels where the solar panels are located.

The targeted consultation on the proposed development of the Kingsway Solar Farm concludes on the 4th of February 2026. The next step is that Kingsway will submit a formal application to the Planning Inspectorate (PINS) who then have 28 days to decide whether to accept the application or not. If they do, it will then progress to the examination stage.

Local Plan Update:

The Local Plan, which will cover both Cambridge and South Cambridgeshire, sets out where new homes and workplaces could be built to meet the area's growing economic and housing needs - alongside the utilities, services, green spaces, and community facilities to support them. Once adopted, it will become the official development plan for the area - guiding decisions on planning applications.

The latest version of the Plan updates earlier assessments of jobs and housing needs with confirmation of the need for around 50,000 new homes up to 2045, to meet the forecast 73,000 additional jobs for the area. Some 37,000 of these homes are already provided for in existing planning permissions and sites identified in the councils adopted local plans from 2018

Grange Farm Abington - Proposed Development

included in the 'New Settlements' of the Local Plan Consultation:
The proposed development of a new town at the location of Grange Farm, Abington has been widely publicised locally. Further information can be found using the link below.

<https://consultations.greatercambridgeplanning.org/draft-greater-cambridge-local-plan-consultation/site-allocations/new-settlements/policy-gf-land>

LPC Office

RJ Fencing of Linton

Your local fencing company

- > New fencing and repairs
- > Hedgehog friendly fencing
- > No job too big or small
- > Free quotations and estimates
- > Landscaping services
- > Licensed waste carriers
- > Friendly professional service

Enquiries call

Jason 07719895149

rjfencinglinton@gmail.com



@pcjconstruction

www.pcjconstruction.co.uk

info@pcjconstruction.co.uk

Ryan Greenwood - 01223 606022

- Extensions
- New Build
- Design and Build
- Kitchens
- Bathrooms
- Property Maintenance
- Refurbishing Windows
- Roofing
- Loft Conversions
- Heritage, Listed & Conservation
- Renovations/Alterations
- Driveways & Patios
- Ground Works

KJL Roofing

All roofing repairs, lead-work, renewal of pitched or flat roofs

New guttering, repairs/unblocking
Free estimates before any work commenced
25 years + Experience

Tel: 01223 892542

Mob: 07958 618440

A & R PLASTERING

All aspects of plastering undertaken:

Plasterboarding
Rendering
No job too small
30+ years experience
Free estimates

Tel: 01223890228

Mobile: 0774 8627920

ProClean

'Your Complete Cleaning Solution'

- *Carpet Cleaning *Rugs *Stain Removal
- *Car Valeting *Caravans *Motor Homes
- *Upholstery Cleaning *Stain Protection
- *Floor Cleaning / Scrubbing / Sealing / Polishing
- *Pressure Washing of Patios Paths & Driveways
- *Domestic Cleaning * Top Ups & One Off Cleaning
- *Gutter / Fascia Cleaning
- *Contract Office Cleaning (Flexible Options)

TEL: 890433 Mob: 0777 375 8355
74 Bartlow Rd, Linton, Cambridgeshire, CB21 4LY

PSH Electrical Services

Rewires, New builds, Extra lights, Extra sockets, Repair works, Garden lighting, Showers

Registered NIC EIC domestic installer

email

pshelectrical27@gmail.com

telephone 07867980738

Move well! Live well!

Hi! I'm Helen. I love keeping movement fun to enjoy a great quality of life. Come and try my friendly Pilates classes to:

- ★ Keep strong and mobile with physio based exercises
- ★ Help prevent back pain by developing stable core muscles
- ★ Improve posture & balance

Group classes in Linton & 1 to 1 classes

07454942577 Facebook [pilateswithhr](https://www.facebook.com/pilateswithhr)

pilateswithhr@gmail.com

Australian Physiotherapy & Pilates Institute
Matwork Instructor

Care in your own home

From the award-winning local homecare provider

Chesterford Homecare

Caring with head and heart



We offer tailored, expert care and support needed to live independently at home.

Call today to arrange a FREE home care assessment

0800 411 8636

chesterfordhomecare.co.uk

Parish Council Minutes



Parish Council Matters is written, edited and published by the Parish Council with the support of the Linton News Team

ABBREVIATED minutes of the Linton Parish Council meeting held on Thursday 4th December 2025 at the Cathodeon Centre.

Councillor Vacancies

Consideration for the co-option of a parishioner to become a member of the Linton Parish Council.

Cllr Tony Smith proposed to co-opt the parishioner to the Parish Council. Cllr Brian Cox seconded. Agreed with three abstentions.

Chairman's Comment

The Chairman advised that the Local Plan is now open and recommended all members read and submit comments on the consultation.

The Chairman congratulated the Linton Fireworks Committee on the success of the event held on 09.11.2025 and thanked the Linton FROGS for the clean-up session following the Fireworks.

Open Forum for Public Participation

Participant One raised a query in relation to food banks in Linton and the opportunity to make donations of near best before food.

Cllr Tony Smith advised of the Food Hub, run by Hope CIC and funded by SCDC, which operates from the Village Hall on Tuesdays and advised that he would share contact details for the organiser.

External and Internal Meetings

Update following the Open Spaces Working Group meeting held on 26.11.2025. Written report available on the LPC website.

Update on the meeting between LPC and the Linton schools as requested by Cllr Chris Hine at the Full Council meeting held in October. For Information.

Cllr Chris Hine advised no further information was available at the time of the meeting and advised the office to contact the LVC Principal's PA to gather items for an agenda in readiness for a meeting in January.

Members of the council suggested to include Youth Provision, Play Areas, including play equipment for disabled children and introduce the LPC Biodiversity plans and the ways in which the schools can be involved.

District and County Councillors report for December 2025.

For information. The Chairman requested that the office share details of the online Police Forum taking place on 11.12.2025 on social media.

Planning

Update on the progress of the Neighbourhood Plan. Cllr Kate Kell provided an update on the Neighbourhood Plan stating that Maria is in the process of drafting a new format for the master document which will be completed by the end of the year. This will facilitate the editing of the final draft including updates on maps and policies.

Consideration of the recommendation from the Planning Committee for comments to be submitted on Planning Application 25/04492/SCRE - Land North of Cambridge Road - Linton.

Cllr Tony Smith proposed that comments be collated by the office and circulated to all members for approval to ensure the submission date of 11.12.2025 is met. Cllr Kate Kell seconded. All Agreed.

Update following the Local Plan Engagement event held on 1st December 2025 in relation to proposed future growth at land adjacent to the A11 and A1307 at Grange Farm. Verbal update from councillors.

Cllr Tony Smith and Cllr Kate Kell attended the meeting held on 01.12.2025 and provided an update.

Finance

Consideration for the SCDC 2026/2027 Parish Precept Consultation and signing by the Chairman.

Cllr Tony Smith proposed no comments be submitted on Appendix A of the consultation document. Cllr Brian Cox seconded. All Agreed.

Grants and Funding

Consideration for the application for grant funding from Anglian Water for watercourse related projects. Decision required.

The Chairman requested the office circulate the email to all to enable potential opportunities to be assessed by members via the links in the correspondence.

Consideration for the request for legal action funding donations by the Open Spaces Society. Decision required. Cllr Chris Hine proposed no donation is made to the Open Spaces Society for legal purposes. Cllr Tony Smith seconded. All Agreed.

Compliance & Risk

Risk

Update following the Play Area Inspection report carried out on 30.10.2025. For Information.

The Clerk provided an update stating that quotations are in process and will be submitted as soon as received. Cllr Chris Hine recommended the office investigate Online Playgrounds as a potential supplier.

Update following the Triennial Tree H&S Survey carried out in October 2025. For Information.

The Clerk advised that quotations for most of the tree work required are included on the Full Council Precept agenda to be considered on 11.12.2025 with the remainder to be sent to known tree surgeons for quotations after the meeting. Noted.

Traffic & Highways

Notification of the CCC Capitally Funded Highway Maintenance programme and request for locations for inclusion. Decision required.

Cllr Robin Williams proposed the following areas be submitted for maintenance.

High Street, Linton - Pavements, Road surface and drainage and the A1307 - Road surface on the dual carriageway - Cambridge bound from LVC to Pilgrim Foods. Cllr Tony Smith seconded. All Agreed.

Open Spaces

Update following the Open Spaces Working Group meeting held on 26.11.2025. For Information.

The Clerk advised that a further Open Spaces working group meeting would be scheduled for January 2026.

Recreation Ground

Consideration for the request for a food van to trade on the Recreation Ground on Friday evenings from 4pm-8pm. Decision required.

Cllr Merrie Mannassi proposed to decline the request for a food van to trade on the Recreation Ground. Cllr Rosalie Campbell seconded. All Agreed.

Cemetery

Update following the Cemetery Maintenance Course attended by the Burials Officer on 14.11.2025 and request for authorisation to address issues in relation to risk. Decision required.

Cllr Kate Kell proposed the following actions be authorised by the Parish Council.

Notices of intent be published, The Cemetery Regulations be amended to highlight ownership responsibility and a Cemetery working group meeting to be scheduled in January 2026.

Cllr Tony Smith seconded. All Agreed.

Community Buildings

Cathodeon Centre

Consideration for the initial draft for the re-design of the Cathodeon Car Park. *Supporting documents in councillor packs.* Decision required.

Cllr Karen Sanderson proposed the first draft for the redesign of the Cathodeon Car Park be sent to the Linton Cathodeon Centre Trust for approval. Cllr Rosalie Campbell seconded. All Agreed.

The Pavilion

Consideration for the request from the Linton Granta Football Club to allow dogs inside the premises. Decision required.

The Clerk advised on the risks involved and recommended that in the role of the officer responsible for risk permission for dogs in the venue be declined by council members. If not upheld, the responsibility would lie with the LPC as opposed to the Clerk.

Participant One was invited to speak by the Chairman. The participant stated that no incidents with dogs had occurred historically and that as a community venue dogs are currently permitted without issues.

Cllr Tony Smith proposed to uphold the recommendation by the Clerk to exclude dogs, except for assistance dogs, in the Pavilion due to the results of the recent Risk Assessment. Cllr Rosie Campbell seconded. 5 in favour, 1 against with 4 abstentions. Motion carried.

Consideration for the request for clarification of parking permitted for selected members of Linton Jazz at the Pavilion during rehearsals. Decision required.

The organiser for Linton Jazz advised that players are being encouraged to park on the High Street and car share to the venue, and asked that parking permits be retained for disabled and elderly members of the band. It was stated that use of the LVC parking facilities had been requested and was refused by Anglian Leisure. Participant one raised issue with the situation stating strict historical rules and regulations have been adhered to by the clubs using the facilities and highlighting health & safety concerns. The participant questioned the statement that parking facilities at LVC were not available, stating that parking could be arranged.

The Clerk advised of the email from Anglian Leisure, included in the councillor packs, confirming that parking is not available to members of the public and advised the RFO had spoken to the sports centre manager, who had re-iterated the decision.

Cllr Brian Cox raised a point of order in relation to the protocol for public participation in meetings reiterating that this must be limited, in all future meetings, to the public participation section of the meeting.

Cllr Tony Smith proposed that an exception be made for Linton Jazz members in relation to parking at the Pavilion while the LPC office re-investigate the provision for parking facilities in the LVC car park with Anglian Leisure. Cllr Rosalie Campbell seconded. 5 in favour with 5 abstentions. Motion carried.

Linton News

Notification of articles required for the February Edition of the Linton News to be submitted to the Clerk by the deadline of 14.01.2026. Action required. Suggestions include Grant Awards for 2026-2027, New Councillor Introduction and a Planning update to include the Grange Farm proposal and news on the speculative development of Little Linton.

Full minutes and written reports are available on the Linton Parish Council website.

Linton Parish Council

The Village Hall, Coles Lane, Linton. CB21 4JS.

Click to the Council - Jenny Seaward

Telephone - 01223 891001

Email - enquiries@linton-pc.gov.uk

Website - www.lintoncambridgeshire-pc.gov.uk

Office Opening Hours

Monday - Friday 9am - Noon

Strictly By Appointment Only

Precision Carpentry & Joinery

- Windows • Doors • Wardrobes • Cabinetry • Staircases
- Bespoke Joinery • Carpentry • Spraying & Finishing

www.carpentryjoinery.co.uk

precision@carpentryjoinery.co.uk

James Tonry - 01440 761688

@precisioncarpentryjoinery

MADE IN BRITAIN

BRITISH WOODWORKING FEDERATION

COOPER BARNES AUTOMOTIVE Bodyshop & Detailing

- Multi Award Winning
- Bodyshop & Accident Repair Centre
- Manufacturer and Insurance Approved
- Courtesy Cars Available
- Insurance Claims Management
- EV & Hybrid specialist

Our dedicated detailing bay provides paint correction, machine polishing and ceramic coatings, getting rid of swirls, reducing or eliminating scratches and giving your car that showroom shine.

Unit 4, The Grip Ind Est

Linton

CB21 4XN

01223 880603

repairs@cooperbarnes.co.uk



Independent Mortgage Brokers

info@exf-mortgages.co.uk

01223 652888

www.exf-mortgages.co.uk

Excellence Financial Limited is an Appointed Representative of The Right Mortgage Ltd, which is authorised and regulated by the Financial Conduct Authority.

Your Home (or property) may be repossessed if you do not keep up repayments on your mortgage or any other debt secured on it.

AJB FENCING

Your Local Fencing Specialists Since 2002

Domestic & Commercial Work
Fencing • Gates • Decking • Paving
Repairs & Replacements

Free, Friendly Quotes & Advice

01223 910888 | 07813 070542

info@ajbfencing.co.uk

HOCKEYS

ESTABLISHED 1885



Welcome from your neighbours!

For a free valuation call us on 01223 789966

47 High Street, Linton, CB21 4HS linton@hockeys.co.uk

Our new office in Linton is NOW OPEN!