

Linton Jazz
Annual Concert
at
Linton Village College
on
Saturday 17th March
at 7.30pm

Established 1987

Over 2,350 copies
distributed
free in Linton,
Hildersham,
Hadstock &
Bartlow

THE LINTON NEWS

www.linton.info e-mail lneditor@linton.info

February
2018

Vol. 31 N° 11

Publication date
Monday 5th February

E & E PLUMRIDGE
Design & Print
41 High Street
Linton
01223 891407

How to cope with a viral illness

COLDS, sore throats and flu can cause a great deal of worry and frustration. Young children have between three and eight colds a year and adults two and four. The onset is two to three days and symptoms can last up to three weeks. In children, symptoms last 10-14 days.

Don't despair though. Here are some tips and good advice that may reassure and speed things up.

- Keep warm – an extra blanket at night perhaps and have plenty of warm drinks such as hot lemon or blackcurrant, and hot chicken soup which may help raise your natural defences as can probiotic drinks recent studies suggest.
- Rest as much as you can.
- Honey can really help with coughing. Children must be over one year old though. Try in warm water and with lemon juice.
- Avoid milky drinks if you find they make you more congested.
- Blocked nose, sinus discomfort? Saline sniffs can help. Take a cup of warm water with a large pinch of salt. Every 2-4 hours, make a puddle in your hand with about a tablespoon of water, lean over a sink, block up one nostril and sniff up each nostril twice. Inhale steam. (Place bowl in a sink for safety). Boiling water with a little tea tree oil or eucalyptus and inhale every 3-4 hours. This reduces the viral count in the back of the nose and loosens up secretions.
- Take a daily multivitamin and mineral supplement. Eat vitamin rich, light meals if hungry. Drink plenty of clear fluids.
- Paracetamol and Ibuprofen will make you feel better but won't make you better as they lower your core temperature. Your immune system is trying to heat treat the virus, so if you take these your illness may take longer to resolve. Take sparingly when appropriate. If your throat is sore, use a menthol sweet or a spray to ease the pain.

- Vapour rubs, gargling with salt water and the use of saline or boiled, cooled water nasal drops have also been found to be helpful and can be bought from chemists and some supermarkets. Cough mixtures are generally ineffective and are a waste of money. Increasing bedroom humidity works better, as do steam inhalations and honey.
- Antibiotics have no effect on viral illnesses. They can cause rashes, increase resistant strains of bacteria, diarrhoea, sickness and changes in your natural defences. They also waste time and money. Please don't expect to be given them.
- Don't smoke and avoid smoky atmospheres.
- Have a flu and pneumonia vaccine if appropriate.
- Use tissues only once and bin them. Wash your hands with soap and hot water frequently to reduce the spread to family members, friends and colleagues.

Children with a history of febrile convulsions should always be kept cool (do not use tepid sponging) and given Paracetamol as directed.

Burning skin but cold hands, rashes which don't fade when pressed with a glass are worrying signs and such patients should be examined as soon as possible. Drooling or the inability to swallow are signs of upper airway distress – please seek advice. Rapid and/or laboured breathing and/or low urine output and/or persistent vomiting are also worrying signs which need prompt attention. Severe headaches and symptoms that are deteriorating after 3-5 days need urgent review with a clinician.

Anyone who becomes breathless, wheezy or coughs up dark or blood-stained sputum MUST be seen. People who suffer with chronic lung or heart disease are prone to bronchitis and MUST be seen if they become breathless or unwell. Diabetics who vomit and are unable to eat or keep down fluids must follow their sick day rules and seek advice.

Di Walters, Nurse Practitioner, Barley and Market Hill Surgeries which are part of Granta Medical Practices.

Planning Appeals – the fight continues...

WE have just completed the hearing for the Horseheath Road planning appeal...

The Diocese had put in three applications for varying numbers of houses, differing allotment spaces, play area, landscaping and flood prevention measures, etc. Two applications were refused by SCDC planning committee; the Diocese appealed against these decisions. A third application was heard but not determined at the SCDC planning committee (see Parish Matters for more detail).

On the first day of the hearing, following much correspondence, it was decided that the appeal for first application would be withdrawn but would continue on the second application but with a smaller scheme. SCDC would not oppose that, so withdrew from the appeal.

Linton has opposed all three applications to build here; we remained to present evidence and oppose the appeal by ourselves. This was complex and wide ranging, not our usual line of work, but we represented our case as well as we could. Thanks to those who helped, councillors, residents and professionals; we will see what the result will be.

Now we have the Back Road/Gladman appeal, a different site, a different developer but the same team representing Linton but this time SCDC will also be opposing the appeal; less pressure for us.

The full case documentation will soon be available in the Parish office, so you can see the depth and range of the work done by LPC planning group – we worked hard for Linton.

Enid Bald

Extracts from councillors' report for Parish Councils –January 2018

Local Plan Update

SOUTH Cambridgeshire Local Plan is now entering the last public consultation stage before potential adoption.

The council have a consultation on the Inspector's final modifications running from 5th January until 16th February. After this, dependent on consultation responses, the Plan could be adopted...finally.

All of the documents can be seen here: www.scambs.gov.uk/mainmods

Street Lighting

DUE to deductions for unsatisfactory performance by Balfour Beatty in their delivery of street lighting in the county, there was a £384,000 underspend in the budget.

We argued that this should be paid back to the Parishes that suffered the worst during this transition, but this was unfortunately dismissed.

A1307 Improvements

THE final option for the A1307 will be consulted on from 9th February.

There are three options but the proposals for Haverhill to the A11 are the same for them all. As this first phase of road safety and bus priority measures is, hopefully, non-contentious, work could start possibly as early as this summer. Detailed proposals can be seen on the website: www.greatercambridge.org.uk look for Cambridge South East Transport Study

Supported Lodgings

THE County Council relaunched the Supported Lodgings scheme and is looking for people with a spare room or annex who can support a young person leaving care aged 16-21.

An allowance of £250 per week is granted to anyone offering this support. More information available on the Supported Lodgings section of the County's website or speak with the fostering service on 0800 052 0078.

Park and Ride Parking Charge

THE Greater Cambridge Partnership has agreed to subsidise the removal of the charge to park at the Cambridge Park and Ride sites in April this year. Since the charge was introduced, usage of the service has dropped significantly.

County Council Funding

THE County Council will soon be deciding its budget for 2017-2018.

The government announced some changes before Christmas, mainly allowing local authorities to raise council tax by 3% instead of the current 1.99% without a referendum.

The current administration has chosen not to increase this in recent years. The recent announcement means that Cambridgeshire remains the 3rd worst funded county council in the UK. More to follow

Councillors John and Henry Batchelor

BARTLOW 3 counties 3 CHARITY WALK

ARE you dreaming of May Bank holiday sunshine?

Then why not write in your diary the date of the Bartlow 3 Counties Charity Walk? As always it will be in aid of another brilliant local charity (to be confirmed soon), Bartlow Church restoration fund and the Linton Health Centre. It will be on Sunday 6th May. So let your friends and family know, dust off your walking boots and tell your dog.

You will be walking through beautiful historic countryside, some of which is private land not usually accessible to the public. If you complete the 13 mile walk you will reach the point where the three counties, Cambridgeshire, Suffolk and Essex, all converge.

There are three marked walking routes, 13.5 miles, nine miles or six miles, offering differing lengths for all abilities and ages.

There will also be a fun children's route with activities to do and things to learn en route.

Toilets and refreshments are provided on the route for walkers (and refreshments for dogs too).

It is a good fun activity for those doing the Duke of Edinburgh Award to walk in their hiking boots and test their fitness, kit and map reading.

Tickets will be available on the website soon, with a discount for online booking before the event. Group bookings and family tickets also available. Tickets at normal prices are available on the day.

Please see local press in the next few months for more information, or go to the website:

www.bartlowthreecountieswalk.co.uk

Duncan Ogilvy



The Dodo Street Band



The Dodo Street Band in action

Picture supplied by the band

THE Dodo Street Band are the last word in Celtic Gypsy Klezmer. This outrageously brilliant group of five folk musicians perform on fiddle, recorder, accordion, bass, guitar and bodhran. To witness this contagious epidemic of wildly maverick music come to Linton Village College at 7.30pm on Saturday 10th March.

Tickets are available online www.lintonmusic.org.uk or from Sweet Talk News, 77 High Street, Linton. Tickets cost £13 for adults, £11 concessions, £2 for a young person (to age 21) and £27 for a family ticket (two adults and two children).

Don't forget the concert at 7.30pm on Saturday 3rd February at LVC when the Solarek Piano Trio (pictured right) will perform – for more details see the January issue of the Linton News.

Hopefully you will receive this issue of the Linton News in time to remind you of this concert.

Linda Bird



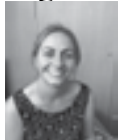
Too good for jumble

NEWLY available items are a USB scanner Epsomn-Perfection 2450 photo; a neon egg boiler, as new which poaches,boils and steams vegetables; a child's metal, cabin frame bed with ladder but no mattress, 75 cm from ground, 190cm long x 90cm wide 15in high; three brand new ink cartridges for a Brother printer in magenta, cyan and yellow. Still on offer is the 18in high white pottery vase with black stripes.

Several enquiries were received for the direct drive turntable which raised £10 for St Mary's Church.

If you have an item to profit a charity, please contact Kate France on 891602 or email kfrance@profsoundconsult.com.

NB: The donor chooses the charity to receive the money.



Linton Infants focus on museums



2018 and the school is a hive of activity, we are all enjoying our topic this term of *Night at the Museum*.

All the children have visited the Sedgwick Museum in Cambridge to explore the collection and enjoy the dinosaur fossils and later in the term we are having a visit from the team at Cambridge Archaeological Unit. We are then jumping forward in time to visit Ancient Egypt where we will look at the pyramids and hieroglyphics. As always, we welcome support on our topic from members of the community and maybe you have a particular interest in our topic this term? If so, we would love to hear from you. Please contact the school office on 891421.

The governors have been busy supporting the school and our School Improvement Development Plan. There are always areas that any organisation would like to improve upon. One item on our Development Plan is *redesign and relaunch the school website*. I am pleased to say that we have worked alongside our website provider and the new, improved website was launched just before Christmas. Do take a look at some of the fantastic things that go on in our school: www.lintoninfants.com

Kelly Harries, Headteacher



THIS term we have focused on our bodies and keeping ourselves healthy and safe. We enjoyed a visit from Natalie from made2move, we went for a walk to the ducks and had a very successful jumble sale. Thank you to everyone for your kind donations and for coming and bagging a bargain. All monies raised from this event pay for all of the children at our setting to attend an end of academic year trip.

We are enjoying watching the money grow on the screens in the Co-op; if you haven't already chosen a charity we would very much welcome your support as we rely heavily on fundraising.

Watch out for our up and coming bingo night which we plan to hold in February at Linton sports pavilion. We currently have spaces available on all sessions, please call us and arrange a visit. Linton Granta Playgroup

Unearth your family history at the library

THE library is a great place to start researching local and family history. In Linton we have a varied local studies collection which provides fascinating insights into the history of the village and nearby communities.

You will find architectural histories, personal life stories, folklore, 19th century newspaper transcripts and much more besides, to help deepen your knowledge of the area.

If you are on a family history quest, we invite you to make use of our online resources and computers. Visit the library pages on www.cambridgeshire.gov.uk to gain free access to several resources including *Find My Past* and the *Times Digital Archive* – you will need a library card to get started. *The Ancestry* website (library edition) and *British Newspaper Archive* are also available for free, on library computers only. Book a session in our computer room to look up family records and find out if any of your ancestors made it into the news. If you have difficulty accessing any of the above resources, ask at the library desk and we'll help you navigate the system.

We regularly change our library displays, to tempt you to explore new reading directions. During February we'll be celebrating LGBT history month with a stand of books by acclaimed writers who are lesbian, gay, bi or transsexual (LGBT). We're also introducing an author spotlight display – drop by to find out who we've chosen this month. If you have an idea for a book display, please come and talk to library staff.

Anna McMahon

Adult Education Sawston Village College

NEW classes starting this January:

- Creative art workshop Mondays 7.15-9.15pm
- Flowers for fun Tuesdays 7-9pm
- Machine embroidery – beginners Mondays 7.30-9.30pm
- Start dressmaking – make clothes Wednesdays 7.15-9.15pm
- Watercolours beginners Tuesdays 10am-12noon
- French cuisine Wednesdays 7-9pm

Amanda Hoskins, 712424

ahoskins@sawstonvc.org www.sawstonadulted.org

Bon appétit!

MY name is Fanny, and this April I am delighted to start a course of French cuisine for adults at Sawston Village College.

If you have an interest in French culture and food, some basic cookery knowledge and are open to new experiences, come along to treat yourself by cooking.

You may learn a few new techniques, will take home the dishes you prepared and meet people sharing passion for food. I promise no frogs' legs.

On the menu:

- Week 1: Degustation and choux pastry
- Week 2: Quiche Lorraine and chocolate tart
- Week 3: Stuffed vegetables and tapenade
- Week 4: Tatin tart and Chantilly cream
- Week 5: Breton Galettes
- Week 6: Nicoise salad and pissaladiere
- Week 7: Beef Burgundy
- Week 8: Floating Islands

French cuisine runs on Wednesday evenings at Sawston Village College 7-9pm for 8 weeks, price £88. Our next course starts 25th April 2018. Come with your apron, containers and ingredients (the list of which will be given to you after your enrolment). All cooking utensils provided by the College.

Fanny Bara Moreau, French Cuisine Tutor



Fanny at work in the kitchen
Picture supplied by Fanny

Christmas customs

IN December Maureen James spoke to the Historical Society about the History of Christmas customs.

The earliest record of feasting and gift-giving describes the Royal Court on a 12 day Progress in 1038.

Increasingly excessive celebrations led Puritans of the mid 17th century to ban Christmas for 18 years. Luckily William Winstanley, an Essex man, recorded the old customs for posterity.

From early December there would be Mummers' plays and singing by the Christmas Waits. Victorian shopkeepers set up festive displays and the sending of cards became popular.

Many homes continue the pagan custom of decorating with greenery; it was the German Queen, Charlotte, who introduced the Christmas tree to England, later popularised by Victoria and Albert.

Originally Captain Christmas was just a jolly visitor but he morphed into the commercialised present-giving Father Christmas, his cry of 'Ho, ho, ho' appropriated from the fairy Robin Goodfellow.

One food tradition was Stir-up-Sunday for pudding making. The procession of the boar's head gave way to roast turkey or goose in Tudor times although the poor made do with chicken or rabbit. Only the wealthy had a marzipan covered cake, eaten at Epiphany.

The next meeting will be at 7.30pm on Tuesday 20th February in Linton Village Hall, Coles Lane.

Carolyn Ferguson will give a talk entitled *The detective story of the masters' wives' coverlet of 1892*. This talk is about the Museum of Cambridge (Folk Museum) and her research into a quilt exhibited there.

Pat Faircloth 893928

Brilliant news for Linton Heights



FOR those of you who didn't see the recent Cambridge Evening News edition *The Real School Guide*, Linton Heights achieved 9th place overall for all Cambridgeshire schools in a recent survey. The survey takes into account 44 different data points – including not just KS2 results but factors like progress, pupil-teacher ratios and absence rates. This formidable result pays testament to the determination and diligence of our pupils, staff and governing body. www.cambridge-news.co.uk/news/cambridge-news/best-primary-school-in-cambridgeshire-14150583

Training at Linton Heights Junior School

OVER the last three years we have built a strong relationship with the University of Cambridge Faculty of Education. For the Linton Heights' team, learning is very much a two-way street. We learn as much from the trainees as they gain from their teaching placement with us.

Mr Culleton and Miss Saddington are two trainee teachers studying for their postgraduate certificate in education (PGCE) at the University of Cambridge. Here is what they say: "We are so grateful to be working with the children and staff at Linton Heights Junior School. From day one, the school has been welcoming and supportive. This truly is a credit to the staff who work at the school. They continuously work hard and go above and beyond to help us and the children. We are delighted to be working with Year 4. Our class mentor, Jamie Wilson has been so helpful. He consistently provides us with constructive feedback and helps us to plan lessons which are fun and engaging for the children.

The children at the school are polite, humorous and vibrant. They clearly love being in the classroom, which is wonderful to see.

We have really appreciated the opportunity to engage with local community during events such as the Christmas fair. We hope to continue to support the school by running extra-curricular activities, including a chess club during Tuesday lunchtimes. Overall, our experience has been a steep learning curve, yet wonderful and we hope to continue to support the school ethos in every way possible."

James Puxley, Headteacher Linton Heights



Thank you

WE would like to use this issue to thank a few people and organisations for their help over the past year. Our brilliant fundraising efforts by parents and children were further boosted by grants from the Co-op, Parish Council, Anderson Trust and Sawston Fun Run. We are so grateful for the new toys and equipment we have been able to purchase and improvements made to our garden area.

We had some fantastic visits before Christmas and thank very much the Infant School for making us feel so welcome at their Christmas play and Symonds House where we visited to sing carols. The ladies and gentlemen there were very friendly and the children had a wonderful time. They were delighted to receive presents too from the residents and the whole experience was wonderful for both old and young.

This term, we are looking forward to learning about festivals and celebrations around the world.

Places are available for this academic year for children from two years to school age. Our opening hours are 9am to 2.30pm, Monday to Friday. We offer a range of morning, lunch and afternoon sessions to suit your family's needs. We are also accepting children who qualify for extended hours funding and can offer this up to the 27.5 hours a week we are open. Please contact our Administrator to arrange a visit or for further information. admin@chestnutplaygroup.org.uk 07342 900120.

Wendy Hine on behalf of Chestnut Playgroup

NEWTON SMITH
WILLS & PROBATE

Specialist advice for Wills, Will Trusts, Inheritance Tax Planning
Estate Administration, Probate Services
and Lasting Power of Attorneys.

No obligation meetings available
at your home or our office in Sawston.

Tel: 01223 833221
www.newtonsmithwp.co.uk
admin@newtonsmithwp.co.uk

Newton Smith Wills & Probate Ltd, Office J, South Cambridge Business Park,
Babraham Road, Sawston, Cambridge CB22 3BH

TRIPLE FITNESS

AMAZING GYM DEALS

Best ever! Check out these great offers.

GYM BUDDY £20 NEW!

STUDENT MEMBERSHIP FROM £4.50

STANDARD MEMBERSHIP FROM £12.00

01223 891154 www.triplefitness.co.uk

Nina, Carl Sophie and Laura welcome you to

BOYZ 2 MEN BARBER SHOP

Opening Hours:

Monday	Closed
Tuesday	9:15am - 5:45pm
Wednesday	2:00pm - 7:45pm
Thursday	9:15am - 5:45pm
Friday	9:15am - 5:45pm
Every Saturday	8:00am - 2:45pm

Special rates for senior citizens Tuesday - Friday only
<http://www.boyz2menbarbershop.co.uk/>

37 High Street, Linton
Tel: 01223 894481

Fully air conditioned
LATE EVENING 'TIL 8:00PM
Wednesday

Traditional Hot towel wet shave
no need to book an appointment.

CHICKZ
Next Door

Ladies Hairdressing

Tuesday	9:15-5:45
Wednesday	2pm-7:45
Thursday	9:15-5:45
Friday	9:15-5:45
Every Saturday	8:00-2:45

Last appointment is at 5pm for Chickz
Last appointment for Saturday is 2pm

37 High Street, Linton
Tel: 07483128990

LINTON VILLAGE MOTORS
(situated in Great Abington opposite Granta Park)
www.lintonvillagemotors.co.uk

Tel: 01223 830550

- MDT testing
- All makes of vehicles serviced and repaired
- Tyres at competitive prices
- courtesy car provided
- Polite and friendly staff

Mon-Fri: 8.30am-5.30pm Sat: 8.30am-12.30pm

LINTON PAVING COMPANY

YOUR LOCAL LANDSCAPING
BLOCK PAVING & PATIO
SPECIALIST.
PROPERTY MAINTENANCE
Int/Ext Painting, General Repairs
FRIENDLY SERVICE.
FREE QUOTATIONS
Tel: Andre Jacobs

Mob: 07765 594398
Office: 01440 702498

Is planning a party or club on your 'To Do' List?

Did you know?

Linton Heights Junior School
are now hiring out their hall and facilities

If you are planning a party or club then please get in contact with the School Bursar, Rebecca McKenzie;
office@lintonheights.cambs.sch.uk
where she can offer you a fantastic hourly hire rate.

CHRISTOPHER MARKHAM
HOME & GARDEN SERVICES

Interior/Exterior Decorating
Fencing, Guttering
Turving, Garden Clearance
Lawn & Hedge Cutting
Decking & Patio Cleaning
Patios & Driveways
Call on
(01223) 892889
or 07973 294946
No job too small...

MOPS HAIR SALON

HAIR BY JO DENNY
WOMEN | MEN | CHILDREN
CUTTING & COLOURING

41 LINTON HIGH STREET
(BEHIND BOSWELL'S BAKERY)
t: 01223 893 285

Readers write...

Post and email addresses and deadline for letters are on this page. All letters for publication must have a full name, address or phone number to enable us to check authenticity. Letters may be edited. Opinions are not necessarily those of the Linton News.

Anonymous letters will NOT be published but names and addresses may be withheld if requested.

OUR THANKS

Dear Editor

I want to thank everyone for cards, letters, thoughts, prayers, hospital visits, gifts, care and help after my accident.

My grateful wishes go to you all and I am improving slowly. Gloria Fidler

Dear Editor

Have you seen the pictures on Sweet Talk News windows? I particularly liked the picture of the ducks. There is one thing missing – the lovely white goose. Children delight in seeing him especially when he is having his daily wash so could you fit him in? Computers can do anything today

Miss Thomson, Hillway

Editor – I agree about the goose – my grandchildren adore him.

However it appears that it is not very easy to add him into one of the vinyl pictures. Anyone got any ideas?



Thrifty Gardening

JANUARY'S talk was about Thrifty Gardening and our speaker was Keith Jordan. Keith lives in the Romsey Town area of Cambridge off Mill Road and works as a volunteer at Cambridge Botanic Gardens. He started his talk by passing round photos of his Grandfather and Father working on their allotments, Keith is seen helping out as a small boy, this was the beginning of his love of gardening.

Growing from seed, either our own saved seed or given by friends, is a good way to cut the cost. Cuttings are also a thrifty way to grow plants including unusual trees, shrubs and herbaceous perennials. Raised beds, allotments and greenhouses are all useful for this purpose.

Many plants can be potted up and put in the greenhouse to protect them during the winter. Keep all your good flow-erpots to use again; buying new ones can be expensive, as are seed trays. Take seeds from a tomato, wash and set in rows on a sheet of paper, then store over winter. When it is time to sow lay the paper in a seed tray and cover with compost and then water lightly. Transplant the seedlings to pots when large enough. Having an allotment means you can save money by growing your own vegetables and herbs but you can also do this at home by setting aside a small patch of garden or grow them in containers. Keith himself has an

allotment and spends many productive hours there.

Don't forget, now is the time to think about what to plant up and sow for this year's Plant Sale and Annual Show.

Our next meeting will be at 7.30pm on Tuesday 13th February in the Village Hall. Non members are very welcome. The subject will be *Right Plant, Right Place* our speaker will be Hilary Thomas.

Anita Daws, 892113, lgcsecretary@yahoo.co.uk

Spinning Shelley



IN place of our speaker, who postponed due to ill health, our president, Shelley Ray, a keen and accomplished craftswoman, gave a demonstration of spinning. She learned her skills from her father and mother, who bought a spinning wheel and taught her daughter everything she knew.

Since buying her own spinning wheel, which she brought to the meeting, Shelley has belonged to various spinning groups. Spinning is the twisting together of fibres to form a thread, which Shelley demonstrated, on a drop spindle and also on her spinning wheel. Using two lots of single threads twisted round each other makes two-ply wool.

A freshly sheared fleece costs about £5 and has to be cleaned using a card and washed in hot soapy water. There are over 70 different breeds of sheep whose wool has either short or long staples. A short staple is bouncy and springy and has a lot of stretch. A long staple is silkier and does not have the stretch. Various alternative fibres, such as cotton, linen, silk and angora, were passed round for members' inspection.

Spindles originate probably from Neolithic times and some Roman spindle whorls were passed round. Shelley also spun on a lazy kate and a niddy-noddy and showed a device for winding skeins of wool into balls.

She knits everything by hand and does her own dyeing with either acid or natural dyes, eg onion skins, nettles, etc. She demonstrated the process of adding dye to water, submerging the garment and putting it in a roasting bag or similar in the microwave for seven minutes, or on a baking tray in the oven. For solar dyeing in a jar, leave outside for about six weeks.

Wool does not conduct heat, resists dirt and flames, is hard wearing, has moisture absorbent properties and generates heat when it is wet.

Our next meeting is on 6th February when our speaker will be John Ray from Linton Zoo talking about zoo babies. New members and visitors always welcome.

Sally Proberts 891021

News from St Mary's

Space for the Spirit

DO you sometimes want time just for you? Time to be quiet, to pray, to be refreshed? *Space for the Spirit* is our new monthly service at St Mary's for everyone who needs time out from their busy life. No singing, no after-service coffee – come and just be.

Space for the Spirit will be held every fourth Tuesday of the month – the next two are 8-9pm on 27th February and 27th March.

Wild Church

WILD CHURCH meets on the first Sunday of each month, gathering round a fire pit in the churchyard to tell stories, think about God, drink hot chocolate, toast marshmallows and do outside activities like den-building, planting bulbs and looking at the stars.

We've decided to give February a miss, so the next *Wild Church* will be at 2.30 pm on 4th March. Theme: *waking up*. Perhaps our daffodil bulbs will have woken up Do come and join us.

Lent Discussion Groups

WE are offering discussion groups using a course called *Come and See: Journeying through Lent with John*. We'd love interested people from the wider community to join us. Groups will begin in the week commencing 18th February: more information and sign-up sheets at the back of St Mary's till that date.

Ash Wednesday on 14th February

JOIN us for the traditional service of *ashing* at 7.30 pm in church, as we reflect on forgiveness and grace.

Maggie Guite (Rector). margaret.guite@icloud.com

THE LINTON NEWS Next Publication 5th March 2018
DEADLINES for ADVERTS Monday 12th February
NEWS ITEMS Wednesday 14th February

ITEMS FOR ADVERTISING MANAGER
Limited space on waiting list for Linton businesses
Changes to ads can be sent to: Judith Rouse
Email: adds@linton.info

ITEMS FOR THE EDITOR
Can be put in the Linton News Box in the Post Office
Editor: Fran Armes, 891517 email: ineditor@linton.info

For distribution queries contact:
Caroline Mulley-Richards
07767 317709 or email carolinemulley@yahoo.co.uk

LINTON DIARY

For entry in this list, ensure that your event is written into the diary in the Post Office; failure to do so could mean non-entry to the diary here. You may also email your event details to diary@linton.info Call 893619 for an audio version of the Linton News. Details of items in bold type may be found in this edition.

WEEKLY

Little stars SEN group, alternate Mondays 1.15-2.45pm CC
Netball, Monday evenings, 6.30pm junior, 7.30pm adult LVC
Linton Granta football bingo, 7pm Mondays Pavilion
Men's keep fit, 8-9.30pm Mondays LVC sports centre
Linton theatre workshop, Mondays (call Joe 01440 703701)
WEA, Tuesdays, 10am term-time VH
Linton Air Cadets Mon and Thurs 7-9.30pm (07717801056) LVC
Scrabble Club, 10am-12noon alternate Tuesdays CP
Linton Granta playgroup, 9am-12noon Monday-Friday LVC
Linton Granta Toddler grp, 9.30-11.30 Tuesdays term time LVC
Linton Granta playgroup, 8.30am-2.30pm Mon-Fri, LVC
Storytime, 2-2.30pm Tuesdays, term-time Library
Granta duplicate bridge club, 2-4pm Tuesdays VH
Beacon Astro Football, Tuesdays, 3.05-4.30pm LVC
Beacon Red Zone Youth Club, Tuesdays, 7-8.30pm LVC
IT club-computer help, 7pm Tuesdays CC
Linton chess club, 7.30pm Tuesdays CC
Belleplate ringing, 7.45-9pm, Tuesdays (971057) URC
Tots in tow, 9.30-11am, Wednesdays term time only VH
Jelly Beans playgroup, 9-11.30am Thursdays URC
Doodle Dots under 5s, Thursdays 10-11.30am, CC
New Beginnings (with Baby Sensory), 1.15-2.45pm, Thursdays CC
Computer buddies, 2-4pm, Thursdays Library
Beacon drop-in Club, Thursdays, 5.30-7pm The Rec
Cricket club, 6-8pm, Thursdays LVC
Beacon Youth Group, 7-8.30pm URC
Parents, carers and tots Mocha house, 9.15-10am Fridays CP
Stay and Play, Fridays 10am-11.30am CC
St Mary's church choir, 7-8.30pm, Fridays CC
Linton Bridge club, 7pm, Fridays CC
For sports centre courses please call LVC sports centre on 890248

FEBRUARY

1 Luncheon Club, 12 noon Old Red Lion Horseheath
3 Farmers' Market, 9am-12noon VH
2 LVC Quiz night LVC
3 **Music Society, Concert 7.30pm** LVC
5 Engage Talk by George Culling, 2pm Library
5 Camera Club, 7pm VH
6 **WI, 7.30pm** VH
7 Reading Group, 8pm VH Upstairs
12 Whist Drive, 7.30pm VH
13 VIP Group, 2pm Chalklands
13 **Garden Club, 7.30pm** VH
14 Community navigator, 10am-12noon HC
15 Parish Council meeting, 7.30pm CC
16 Daylight readers, 10.30am
18 Walking group, 11am, Church Lane
18 Messy Church, 2.30pm St Mary's Church
20 **Historical Society, 7.30pm** VH
21 Cambridgeshire hearing help, 9.30-12 noon LintonHC
27 **Space for the Spirit, 8-9pm** St Mary's Church

MARCH 2018

1 Luncheon Club, 12 noon Old Red Lion Horseheath
3 Farmers' Market with Fairtrade stall, 9am-12noon VH
4 **Wild Church, 2.30pm,** St Mary's Church
5 Camera Club, 7pm VH
6 WI, 7.30pm VH
7 Reading Group, 8pm VH Upstairs
12 Whist Drive, 7.30pm VH
13 Garden Club, 7.30pm VH
14 Community navigator, 10am-12noon HC

KEY: CC Cathodeon centre, CP church pavilion, D&D Dog and Duck, HC health centre, LH Linton Heights school, LIS Linton Infant school, LVC Linton village college, RG recreation ground, URC United Reformed church, VH village hall.
Library times: Mon closed; Tue 10am-5pm; Wed 4pm-7pm; Thurs 2pm-5pm; Fri 10am-5pm; Sat 10am-1pm.
Bin Collection Dates
Linton refuse collection: Mondays 5th and 19th January:
Linton blue and green bin collections: Mondays 12th and 26th February.

LINTON PAVING COMPANY

YOUR LOCAL LANDSCAPING
BLOCK PAVING & PATIO
SPECIALIST.
PROPERTY MAINTENANCE
Int/Ext Painting, General Repairs
FRIENDLY SERVICE.
FREE QUOTATIONS
Tel: Andre Jacobs

Mob: 07765 594398
Office: 01440 702498

TO THE GUILD OF MASTER CRAFTSMEN

Chilford Hall Vineyard Presents
Cheese & Wine Evening
Saturday 24th February
From 6pm
Only £20.00 per person

Come along to try some of our Chilford Wine's matched to a selection of English cheeses from our local supplier.
Our experienced Tour Guide will take you through a tutored tasting.

Book your place now as limited spaces available
01223 892600
Chilford Hall, Balsham Road, Linton CB24 4LE
www.chilfordhall.co.uk events@chilfordhall.co.uk

"Amazing to see a traditional style barbers like this again, great service with friendly approachable staff, highly recommend this shop"

THE VILLAGE BARBERS LINTON

OPENING TIMES:
Monday: 09:00-18:00
Tuesday: 08:30-18:00
Wednesday: 08:30-20:00
Thursday: 08:30-18:00
Friday: 08:30-19:00
Saturday: 07:30-15:00
Sunday: Closed
NO APPOINTMENT NECESSARY
DISCOUNT FOR SENIOR CITIZENS FROM MON - FRI

113A High Street, Linton, Cambridgeshire
Email: lintonvillagebarbers@gmail.com
Tel: 01223 892310
Or find us on

ClearTax & ACCOUNTING LTD

Quality, friendly accounting services and taxation advice.

Sole trader and small company specialist.

Free initial consultation

The Granary,
Yews Farm Yard, Hadstock

t: 01223 894036
e: janine@cleartax.co.uk
www.cleartax.co.uk

Westlakes
Painting & decorating exterior and interior

Les Westlake
Mobile: 07929 501101
Tel: 01223 892866

Clive Westlake
Mobile: 07900 492127

Barn Owl Accommodation

Private self-contained annexes all in Linton

www.barnowlaccommodation.co.uk
Call Suzanne on 07767 941188

STEVE WEBB
Painter & Decorator

Now upcycled furniture painted to your requirements

Excellent present ideas
Call for viewing details

Tel: 01223 893864

PSH Electrical Services
Rewires, New builds, Extra lights, Extra sockets, Repair works, Garden lighting, Showers
Registered NIC EIC domestic installer
email pshelectrical27@gmail.com
telephone 07867980738

Neil Claxton
Painting & Decorating Interior/Exterior Rooms Emulsioned from £120
FREE ESTIMATES
Tel: 01223 893487
Mobile: 07724073045
E-mail: n.claxton925@btinternet.com

The Cambridge Stroke Group

THE Cambridge Stroke Group is a support group for all stroke survivors in Cambridgeshire. It is a small charity, run entirely by volunteers, which was created by joining together Different Strokes, Cambridge and The Stroke Association to help provide a comprehensive support group for all those, of any age, who have had a stroke. The group provides support and a lifeline to its members, helping to transform their lives and speed up recovery after a stroke by gaining independence, establishing new friendships and experiencing new activities.

The aim of the group is to provide a meeting place in a friendly and caring environment for people who have had a stroke, their families, carers and friends.

It is a place away from the hospital that offers emotional and social support to stroke survivors and a chance to meet others who have also experienced the potentially devastating effects of having had a stroke.

Our drop-in meetings are calm, friendly and informal and everyone is welcome to pop in for a cup of tea or coffee and a chat. We meet every Thursday afternoon between 1pm-4pm at the David Rayner Centre, Scotsdales Nursery and Garden Centre, 120 Cambridge Road, Great Shelford CB22 5JT.

For any further information please email us on info@cambridgestrokegroup.co.uk or visit our website on www.cambridgestrokegroup.co.uk. Alternatively ring Helen Long on 07540 513225.



Are you a potential fire fighter?

ON-CALL firefighters are a vital part of today's fire and rescue service, providing an efficient, effective service that gives emergency cover to more than 90 per cent of the UK. In Cambridgeshire they make up 56 per cent of the workforce.

An on-call firefighter is not based at a fire station but carries a pager and responds to emergency incidents as and when they happen. They receive an annual wage to reflect the time they commit to being available, plus additional payments for attending incidents and drill nights (one evening a week for two hours).

On-call firefighters are men and women who may have other jobs and are able to provide evening, daytime, or weekend cover. When they are on-call they may be at home, working for themselves or for a nearby company, or out in their local community within our five-minute radius of the station itself. Our on-call firefighters are mainly located in rural communities, small towns and villages and we will be able to tell you if you are within range to apply to be an on-call firefighter.

If you are interested in becoming an on-call firefighter please go to our website at www.cambsfire.gov.uk and search for on-call firefighter under the careers section or contact the recruitment team at recruitment@cambsfire.gov.uk.

NRS CARPETS

HOME SELECTION
FREE MEASURING & ESTIMATING
All types of flooring available
Tel: 01223 893634
Mobile: 07885 173113

Fine Design
ENGRAVING

trophies, awards, gifts etc

We can supply metal sports trophies.

A large range of glassware available

Maureen Williams
01223 893514
LINTON
fine.design@btinternet.com
www.finedesignengraving.co.uk

KJL Roofing

All roofing repairs, lead-work, renewal of pitched or flat roofs
New guttering, repairs/unblocking
Free estimates before any work commenced
25 years + Experience
Tel: 01223 892542
Mob: 07958 618440

Singing Lessons

Sarah Rosewell
BA (Hons) Music

Individual singing lessons available for all ages and abilities
Whether towards exams or purely for pleasure
* CRB Checked
* Based in Linton
For more information contact: Sarah on 01223 894861
Email: sarahrosewell@hotmail.com

Discreet Pest Prevention & Control

A J PEST CONTROL
FAST AND EFFECTIVE
PROFESSIONAL SERVICES
COMMERCIAL - DOMESTIC - AGRICULTURAL

National Pest Technicians Association

- Wasps, Hornets & Flies
- Mice and Rats
- Fleas, Bed Bugs and Ants
- Bird Control
- Squirrels and Rabbits
- Cockroaches

Based in Linton
Contact: 01223 914004 or 07855 478824
www.ajpestcontrol.co.uk

Granta Travel Clinic

WE have been providing a travel service here at Granta Medical Practice for over 30 years. To meet an ever increasing demand for travel advice, vaccinations and malaria tablets for travellers we will be expanding our service in the New Year.

Many GP surgeries no longer provide travel services at all, so we are very excited to be able to offer our patients an increased, dedicated, and streamlined travel clinic which can offer more appointments during the week.

We will be able to offer our travellers the opportunity to purchase mosquito nets, insect repellents and travel packs with all those essential remedies, along with medical first aid kits and needle packs.

If you are planning to travel abroad, please download a risk assessment form from the website or collect from reception. We will then provide advice on the recommended vaccinations and any advice you may need for your trip. We will contact you to book an appropriate appointment for you. This may be in our private clinic if you require yellow fever, rabies, Japanese encephalitis or malaria tablets, which you will need to pay for, or an NHS travel appointment will be offered if just needing hepatitis A, typhoid or a tetanus booster, which are free.

Please remember, some vaccines need four to six weeks to complete courses, so please contact us in good time.

Sandra Johnson, Travel Lead, grantamedicalpractices.co.uk (who will be supported by appropriately qualified nurses).



Extracts from the Chief Constable's new policing model

THE future policing model for Cambridgeshire has now been agreed and will roll out from 30th April. Our focus remains to protect the most vulnerable people and target the most serious offenders.

Every resident will be able to access their local policing team and have an identified PCSO in their area. However, there will be no new intakes of PCSOs but there will be a commitment to retain a minimum of 80 full time equivalent posts.

Additional officers will be in those areas where our most vulnerable people and most dangerous offenders are, focusing on issues such as child protection, rape investigation and domestic abuse.

This new model will be split into just two areas, north and south, making us more efficient, reducing supervisory and senior management posts and enabling us to commit more resources to the frontline.

A Missing, Exploited and Trafficked (MET) Hub will be created, to protect children most at risk within these three areas and focused on apprehending the offenders who target them.

There will be changes to our current intelligence structure, which will enable us to increase our analytical provision, allowing improved analysis of demand.

PCSOs will continue to play a central role in neighbourhood policing and problem solving.

Every District Council area will have an enquiry office function. Community action teams, similar to the current Rural Crime Action Team (RCAT), will be created to respond to local problems. These officers will be tasked with dealing with local issues, prioritising those where the risk to individuals and the public is highest.

The force will continue to have a serious and organised crime team, cyber and fraud team, and surveillance team to tackle crime gangs. We will regularly update you on progress towards this new model.

Chief Constable Alec Wood

Qualified level 3
Body Control
Pilates Teacher.
Classes for all,
specialising in
older and less able clients.

ziggapilates

Contact Rachel 07905105081
Rachel@ziggapilates.co.uk
www.ziggapilates.co.uk

BED & BREAKFAST

Mrs Monica Clarkson
4 Harefield Rise, Linton
Tel: 01223 892988
Quiet modern bungalow
Families welcome
No Smoking

The Crown Inn, Linton presents

Monday Fish & Chips £5.95
Tuesday Rump Steak £8.95
Wednesday Free Dessert with Main Meal
Thursday 10% discount on Pizza
Friday Gourmet Burgers
Every Weekday Lunch Time Free Dessert with Main
5:30-6:30 Happy Hour Monday-Friday

www.crownatlinton.co.uk
11, High Street, Linton, Cambs Tel 01223 891759

PJB Maintenance

No job too small
Ground work, Patios,
Floor & Wall Tiling,
Fencing, Roof repairs,
Demolition
CPSC Licence
Free Estimates
Call **Peter Belsom** on
Mob: 07799 183308
Tel: 01223 891273

ELITE MOBILE CAR VALETING SERVICES

All types of valeting cars, vans, Caravans, camper vans. Standard to full valets...
Est 1997.
Free quotes and discounts for more than one vehicle
Andrew Tofts,
01223-893273
07713638333...

Creating a safer
Cambridgeshire

PLODDING ALONG
An update on police matters

Action Fraud
National Fraud & Cyber Crime Reporting Centre
0300 123 2040

Better internet security in two minutes

DOMAIN Name Systems (DNS) are like public phone books for the web. They're the reason you only need to remember a website's name and not its IP address (think of these as phone numbers for computers). When you type www.youtube.com into a browser, a DNS service translates that into the associated IP address (199.223.232.0) for you. Imagine a phone book that automatically filters and removes phone numbers known to be used for fraud. That's what Quad9 does for websites. Quad9 provides an automated way to protect yourself and your business by blocking access to known malicious websites, like phishing sites designed to steal personal or banking details. Quad9 checks the website to determine if it's malicious. Visit Quad9.net for a step-by-step guide on how to improve your online security in two minutes.

Crime alerts

BETWEEN 7.30pm on 7th December and 5pm on 11th December there was a burglary from a business in Balsham Road. Reference CF0717331217

On the night of 13th to 14th December a car was stolen from the drive of a property in Barley Way.

Sometime between 8pm on 2nd January and 10am on 22nd January, around 10 to 12 square metres of lead was stolen from the roof of Linton Free Church in Horn Lane, Linton.

Lindsay Gardiner
(PCSO, South Cambridgeshire, Cambourne)

Come and Sing Handel's Messiah (excerpts)

WE are planning to hold another *Come and Sing* this year – on Saturday, 24th February at St Mary's Church. Rehearsals to start at 2pm. We will be exploring Part two of Handel's Messiah, including the Hallelujah Chorus which is appropriate to this time of year.

Anyone who wishes to sing is welcome to join the rehearsal. Those who wish to listen can join the run through at 6pm. Further information from David Parry-Smith who will be directing the day. 894715 David@parry-smith.co.uk or on Facebook fb.me/LintonComeAndSing

Anne Parry-Smith, 894715

Cider with Rosie

ST JOHN'S Players of Fulbourn are performing *Cider with Rosie*, based on the much loved book by Laurie Lee, from the 13th to 17th February in Townley Memorial Hall, Fulbourn.

The book is a wonderfully vivid memoir of childhood in a remote Cotswold village before electricity or cars, a timeless place on the verge of change. Laurie Lee depicts a world that is both immediate and real and belongs to a now distant past.

As St John's Players begin their next 70 years, this play, presented in the round, brings together a large cast of familiar faces and welcome newcomers.

For tickets see www.ticketsource.co.uk/stjohnsplayers. Website: www.stjohnsplayers.co.uk

Neil Cole , 07912 307781

COOPER BARNES
AUTOMOTIVE

Vehicle Accident Repair Specialist
Modern, Classics & Vintage
Landrover Restoration a Speciality
British Standard 59125 accredited

Convenient customer care with our collection and delivery service

Contact us today

2 The Grip Ind Est, Hadstock Road, Linton, CB21 4NN
T: 01223 880603 E: repairs@cooperbarnes.co.uk W: www.cooperbarnes.co.uk

LINTON CABS
lintoncabs@btinternet.com
Taxi Private Hire
Airports, Train Stations, Seaports, All Local Travel

Call Murray or Martin

07958657300
07419984087



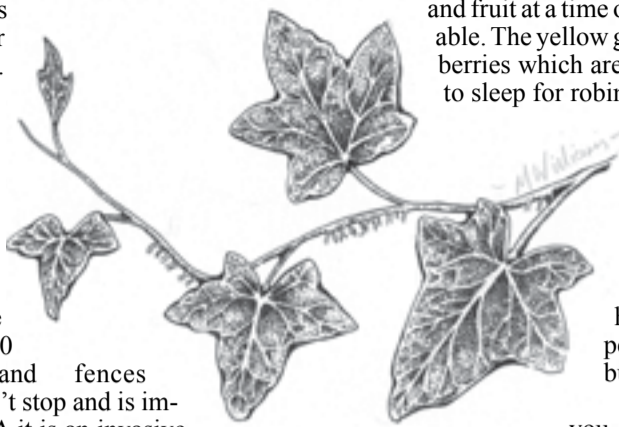
COUNTRY MATTERS

Text by Oriel O’Loughlin and illustrated by Maureen Williams



Ivy ivy everywhere

WE’VE finished with all the holly, but we’re now left with the ivy, known in former times as woodbind, bindwood and lovestone and a native of Eurasia. It is everywhere, in the smallest nook and cranny, along verges and up trees, up walls, taking over hedges and hiding road signs. Some encourage it and others battle against it. Go elsewhere for a week and there it is, all round the shed, the greenhouse and the logstore, attaching itself to supports by producing aerial roots along stems. It thrives in both cities and in the country, in any shady place and even on rocks up to 1,000 feet high. It hides ugly walls and fences and tree stumps but then it doesn’t stop and is impossible to get rid of. In the USA it is an invasive species. Even if you pull it off wood the pattern of leaves remain. You will just end up covered in leaves, dust, dirt, nests and insects in your hair, mouth and up your nose. Might as well admit defeat and have a cuppa. But for all this ivy has many plus points. Right back in the time of Pliny the Elder, the Romans were using ivy fruit mixed with wine to dissolve kidney stones. There are endless medicinal



uses of it for humans but I will stick with its wildlife credentials. Just put your ear to ivy in the autumn and hear the bees and hoverflies hum. It is of major importance as a supply of nectar and fruit at a time of year when few other sources are available. The yellow green flowers turn to plump purple-black berries which are nutrient rich. Ivy provides somewhere to sleep for robins, wrens and dunnocks. Small mammals and bats use it for shelter. Just watch a pigeon hanging comically upside down flapping madly trying hard to get the berries in the winter. These same pigeons disperse the seeds very successfully. Think of this when you go out with the electric hedge trimmer. If you need it cut back, perhaps do it any time after it has fruited but before the nesting season. And here is where people disagree. As you drive along country roads you will see stumps covered in ivy and blown down in the wind. Did the ivy kill the tree? The consensus seems to be that although ivy competes for nutrients, light and water, it doesn’t kill otherwise healthy trees. Same with walls. A new wall will not be destroyed by ivy. But as soon as there are a few cracks in the masonry, it will weave its way through with astonishing tenacity, even making walls lean over and eventually topple. You have to admire it.



POT POURRI 154

What was the exact time?
THE analogue clock had passed several minutes past nine o’clock. The exact time had been forgotten, however it was noted that the hands of the clock were 180 degrees apart.
What was the time to the nearest second for this to occur?
Pot Pourri 153 – What is the %?
The ladder had moved 7.29cm downwards.
Urania

NEWS IN BRIEF

Quiz night
HILDERSHAM Village Hall Trust is hosting a quiz night in the village hall on Friday 16th March.
Tickets cost £8, which includes a hot supper. Please bring your own drinks and we’ll provide the glasses. Everyone is welcome – bring your team of up to eight people or come along and join with others. Doors open 7pm for a prompt 7.30pm start.
To book, contact me on 893596 or edheale@btinternet.com
Jill Heale

Fundraiser for the band
LINTON Jazz are holding their annual concert at 7.30pm on 17th March in Linton Village College with a bar and raffle. This is the main fund raiser for the band so please support them. Tickets available from Karen Sanderson on 07748917513 or email lintonjazz64@gmail.com. Prices are £10 adults £5 OAP and under 16s.
Kate Kelly, 892553

We’re still good
SYMONDS HOUSE are very pleased to announce that following an inspection from CQC on 19th November 2017, the current rating of *good* has been maintained.
Please keep an eye out for our events and social activities at the Home. We are very keen to involve as many local people as possible and make Symonds House a more widely recognised asset to the village and a bigger part of the community.
Julie Cleland, Home Manager, 891237

February events at Wandlebury
Healthy walking every Thursday
MEET at the Stable Rooms at 10am for a longer walk or 10.30am for a shorter stroll. Walks end around 11am with tea and coffee in the Stable Rooms. All welcome, suitable for all abilities.
Free of charge and no need to book, please arrive 10 minutes early to register if it’s your first session.
Basket Weaving on Saturday 3rd February
FROM 10am to 4pm
Note: booking necessary and charge made
Beginners and improvers welcome. Tools, tea, coffee and biscuits will be provided but bring a packed lunch. You’ll be able to take your basket home with you too –Meet at the Stable Rooms. Wear warm clothes – the Stable Rooms will be cool.
Family Bushcraft Fun on Saturday 24th February
FROM 11am to 3.30pm for all the family.
Note: booking necessary and charge made. Children must be accompanied by an adult throughout.
Making shelters, starting fires, cooking on open fires, using camouflage, playing outdoor games and tracking around the park.
Dress according to the weather and bring a packed lunch and a drink. Meet at Wandlebury Stable Rooms.
For more information on any event email bookings@cambridgeppf.org, call 243830 extension 207 or visit www.cambridgeppf.org/whats-on

Note: booking necessary and charge made. Children must be accompanied by an adult throughout.
Making shelters, starting fires, cooking on open fires, using camouflage, playing outdoor games and tracking around the park.
Dress according to the weather and bring a packed lunch and a drink. Meet at Wandlebury Stable Rooms.
For more information on any event email bookings@cambridgeppf.org, call 243830 extension 207 or visit www.cambridgeppf.org/whats-on



ABRAMS HEATING
Professional heating & plumbing services

- Boiler Installation, Service & Repair
- Gas Fires, Cookers & Hobs
- Landlord Safety Certificates
- Quality Kitchens & Bathrooms
- General Plumbing
- 24hr Emergency Callout

01223 897236 07931 685774 www.abramsheating.co.uk



Springfield House
B&B
14/16 Horn Lane,
Linton
River views from bedrooms & guest lounge:
01223 891383
www.springfieldhouselinton.com

SELF STORAGE CONTAINERS
20ft X 8ft Secure Self contained Storage Containers available on a month by month rolling contract for as little as £25 a week.
Totally secure location out of view close to Linton
Please contact 07776258666
enquire@bartlow-u-net.com

WATERCOLOUR PAINTING
Explore the magical world of water-colour painting with an experienced artist, in the comfort of your own home.
For details, please contact: Susan Mackenzie (01223) 891521 or: sjhmac2@yahoo.co.uk

GLENWOOD BOLTS & SCREWS LTD
www.glenwoodbolts.co.uk



SUPPLIERS OF QUALITY FASTENERS, FIXINGS & SILVERLINE TOOLS
Unit 2 Lintech Court
The Grip Industrial Estate, Linton
Cambridge, CB21 4XN
Tel: 01223 892095 / 893931
Fax: 01223 894122

MOBILE CHIROPRACTIC SERVICE
GCC-Registered Chiropractor
ALEXANDER M SMITH
01223 967565
SOUTH CAMBS AREA
(Based in Linton)
Effective care in the comfort of your home
- Low back pain & sciatica
- Neck pain & headaches
- Muscle spasm/tension
- Shoulder & Knee pain
- Postural problems
www.alexandersmithchiropractor.co.uk



ABRAMS HEATING
Professional heating & plumbing services

- Boiler Installation, Service & Repair
- Gas Fires, Cookers & Hobs
- Landlord Safety Certificates
- Quality Kitchens & Bathrooms
- General Plumbing
- 24hr Emergency Callout

01223 897236 07931 685774 www.abramsheating.co.uk



Springfield House
B&B
14/16 Horn Lane,
Linton
River views from bedrooms & guest lounge:
01223 891383
www.springfieldhouselinton.com

SELF STORAGE CONTAINERS
20ft X 8ft Secure Self contained Storage Containers available on a month by month rolling contract for as little as £25 a week.
Totally secure location out of view close to Linton
Please contact 07776258666
enquire@bartlow-u-net.com

WATERCOLOUR PAINTING
Explore the magical world of water-colour painting with an experienced artist, in the comfort of your own home.
For details, please contact: Susan Mackenzie (01223) 891521 or: sjhmac2@yahoo.co.uk

Benten & Co.
Chartered Certified Accountants

We are a friendly, well established firm, large enough to deal with most accountancy and taxation matters.

Please telephone for an initial consultation (without obligation)

*Abbey House, 51 High Street, Saffron Walden
Telephone 01799 523053
www.benten.co.uk*

CapriBlinds

ALL TYPES OF BLINDS SUPPLIED AND FITTED
FREE QUOTATIONS
FREE HOME VISIT
01223-894020
or email colin@capriblinds.co.uk
ALL BLINDS ARE MADE IN ENGLAND - FAST LOCAL SERVICE
Visit capriblinds.co.uk

Designer Drapes

Linton Rd , Hadstock Tel: 01223 890 556

For all your Curtains and Blinds give us a call.

Curtain Alterations
Free Measuring
Fitting Service
Haberdashery
Quilting fabrics
Fabric sold by the meter

Patchwork lessons
Wednesday mornings and Tuesday evening
Book your place now, spaces limited
Sewing machine repair and service

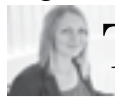
www.curtainsandcraft.co.uk designerdrapes2@gmail.com

Chapel
Independent Financial Advisers

SPECIALIST ADVICE ON
Personal Financial Planning – Pensions
Investments - Mortgages – Protection
FREE Initial Consultation – Without Obligation

Ian Cross DipPFS
01223 892821
E-mail: ian@chapel-ifa.co.uk Website: www.chapel-ifa.co.uk

De-Salis House, 6 Hillway, Linton, Cambridge, CB21 4JE
Chapel Independent Financial Advisers LLP is a limited liability partnership which is authorised and regulated by the Financial Conduct Authority
Registered in England & Wales No. : 06350431



The Marsh mail



WITH the cabinet reshuffle in January came the announcement of Justine Greening's resignation and a new Secretary of State for Education: Damian Hinds.

During my two years as Principal at LVC, there have been three different ministers in this top position. Nicky Morgan was known for her focus on character education, Justine Greening for using schooling as a vehicle for social mobility. We are still awaiting details of Mr Hinds' vision and values.

In many ways, it is great that since Blair's *Education, education, education* pledge in his 1997 speech, schooling has become a more pressing priority for the government.

However, Greening's exit signals yet more change for the profession. Given the amount of turbulence since 2010, teachers are understandably anxious about what policies the new Secretary of State may introduce to make his mark.

In recent years there has been substantial profile given to ministerial priorities including freemgrammar schools, free breakfasts/lunches and school funding, to name a few. This has been against a backdrop of significant government driven reform that has seen the removal of National Curriculum levels, new, more challenging primary and GCSE testing and a hike in accountability.

The doorstep manifesto released by the Headteachers' Roundtable, a national non-political educational think tank of which I am a member, has the following guiding principles: 1. The pace of educational change should not be affected by party politics; 2. Schools must be able to offer all their pupils the chance to thrive; 3. Educational change should begin by identifying the desired outcomes for children; 4. Prioritising high quality teaching and learning and the curriculum will lead to world class assessment and accountability; 5. The teaching profession should be centrally involved in developing future education policy.

In 2012, Mr Hinds published an All-Party Parliamentary report in which he stated a need to "focus first on quality of teachers and teaching". I hope that his 18 years in the hospitality industry has given him a disposition to listen to and serve the education community.

People are incredibly important in education but it is children, not political preferences, that need to be at the centre of education policy.

Helena Marsh

The Cottenham yesteryear road run 2018

DUE to circumstances beyond our control we have been compelled to cancel the next *Yesteryear Road Run*, planned for 22nd April 2018. This is related to the ongoing Northstowe development.

The real losers will be the Arthur Rank Hospice Charity, for whom last year's Run raised over £9,000 to support the wonderful work they do. To make sure the Charity doesn't lose out completely, we have set up a just-giving page:

www.justgiving.com/fundraising/vivien-lampard Alternatively, donations can be sent to Mrs Vivien Lampard, 319 High Street, Cottenham, Cambridge CB24 8TX. All receipts will go to the Charity.

Vivien Lampard

Cottenham Yesteryear Road Run Committee

The Dog & Duck
63 High Street, Linton
Tel: 01223 890349
Pub & Restaurant
Open All Day, Every Day

*Idyllic Riverside Thatched Pub and Restaurant.
Hearty Home-Made Pub Food.*

Be Assured a Fantastic Welcome and a Perfect Pint!!

**Live Jazz - 1st Sunday of every month
3pm-5:30pm**

Fish and Chips Special on Wednesday £5.95
Sunday Roast

www.facebook.com/thedogandducklinton

Allstar Cleaning Ltd
www.allstarcleaning.me.uk

Your Local, Professional, Carpet Cleaner Dean
11 years experience

Package to suit every level: Basic, Pet Treatment or Carpet Protector

£15 off for repeat customers
Free stain spotter for all customers

Contact **Dean** on **01223 654652**
or info@allstarcleaning.me.uk to make an appointment.

14 Hillway, Linton, CB21 4JE.

the flower boutique

*Treat yourself, your friends and family
to the freshest seasonal flowers.
Bespoke design service for weddings
and funerals.*

41 high street . Linton . 01223 891740
www.theflowerboutique.co.uk



The Way We Were

by Garth Collard



The Queens House, 16 High Street

Picture from Garth's collection

THE history of Queens House is well documented from about 1600 to the 1950s.

The Royal Commission on Historic Monuments 1951 architectural survey and the South Cambs District Council survey of 1969 provided a clear description of the house's structure. It is a two-storey timber framed plaster, brick and stone house with a tiled roof.

An older 17th century red brick house was face lifted in the 1790s and given the more fashionable Queen Anne and Georgian look.

The front entrance sash windows are original. The roof has a square shaped lantern centrally placed on the building. The house has two rooms one on each side of the lantern with many of the internal 17th century features retained.

The earliest mention of the house is dated 1562 although no names or numbers were used in those days. The front garden was enclosed by red brick walls with metal railings to the front. The railings were pulled down in 1940 to aid the war effort and the present-day wall was erected in the 1960s.

The first recorded owners in 1600 were Simon Browne and his wife Sybille, both glove makers, who had 12 children. The house remained in the family until 1654.

Around the 1730s it was bought by Thomas Talbot, an attorney who had recently

married and become steward of the Linton manors. He probably rebuilt the front of the house then or else added to it in the 1780s when he had a large family. Lime trees were grown in the front garden.

Some of his daughters married into rich families the Taylors, Hammonds and Kidmans – all tanners and non-conformists.

By 1800 the house was in the hands of Robert Taylor. He eventually left the house to three of his nieces, the Misses Kidman, Hammond and Taylor.

For much of the 19th century the house was rented out for about £20 per annum when most cottages only cost £5 per annum.

One of the first tenants was Richard Cottingham who rented the Grip Farm. From 1872 to 1889 it was rented by James Hodson the village Relieving Officer who decided which individuals were sent

to the Workhouse and which could receive monetary relief paid for by the poor rate. Prior to Hodson the house was rented by Dr Edward Ireland, one of the earliest village doctors.

In 1893 the house was purchased by farmer John Gayfer from Barnet who named the house Barnet House. One of his tenants was a new village butcher, William Osmond, whose shop was on the site of the present Linton Kitchen.

From 1914 to 1920 Herbert Titmarsh, the local chemist, rented the property before he built Essex House, at the bottom of Joiners Road. His beautiful garden was built on in the 1960s and was renamed Essex Gardens.

Titmarsh was secretary of the Linton Labour party and secretary of the Essex Ancient Order of Shepherds' Friendly Society, responsible for building of Shepherds Hall in Market Lane in 1922.

From 1920 to 1926 Barnet

House was a private school conducted by Charlotte and Louisa Stanton assisted by Miss Morton. It was supported by the children of most shopkeepers and farmers. Class sizes were around 12, compared with over 40 at the village school. Miss Stanton specialised in teaching music, singing and ballet.

Miss Borrer bought the house for £450 in 1935 then it was requisitioned for the Queens Regiment officers in November 1939.

Evacuees were housed in many of the larger county houses including the Barnet House in 1944 to 1945. When Miss Borrer returned home she was awarded £487 compensation for war damage and because the house was infested with fleas brought in by the evacuees. She then sold Barnet House to a Professor Vincent for £1,250 who renamed it Queen's House.

In 1947 it was purchased by Graeme and Valerie Green but Valerie considered it too small with too many staircases and missed her Oxford friends. Graeme had bought the house without his wife seeing it as he was having an affair with a Mrs Walston of Newton Hall. They soon moved back to Oxford.

The Mannings who kindly lent me their deeds bought the house in 1960, the year in which South Cambs District Council assigned numbers to village houses so Queens House was No16 High Street.

Volunteers wanted

CAMBRIDGE re-use, a registered charity, is a furniture project dedicated to helping low income families. We accept donations from the general public, a wide range of furniture, large and small electrical appliances and other household goods such as carpets and curtains.

To help our work we are looking for :

1. Drivers to join our dedicated team. Drivers will be with two van crew so it is not necessary for you to do any lifting. You will be delivering/ collecting furniture to and from customers' homes.

2. Physically fit and energetic people to fill voluntary van crew positions within our dedicated team. As a valued member you will be assisting the van driver and other crew member delivering/ collecting furniture to and from customers' homes. Heavy lifting is involved.

We offer travel and lunch expenses, 25% discount and free delivery on any purchases made from the charity. Most importantly a warm friendly atmosphere with tea, coffee and biscuits, and sometimes donuts. For further information on how to apply please contact me on 414554 or email cara@cambridgereuse.org.uk.

Cara (Manager)

**A & R
PLASTERING**

All aspects of plastering undertaken:

- Plasterboarding
- Rendering
- No job too small
- 30+ years experience
- Free estimates

Tel: 01223890228
Mobile: 0774 8627920

**LONG & SHORT STAY
ACCOMMODATION**

**COTTAGE &
CONVERTED BARN**

**HOLIDAYS, WEEKENDS
BED & BREAKFAST**

**WEST WRATTING
CAMBRIDGE, CB21 5LU**

T: 01223 290492
www.bakerycottage.co.uk

PLANNING APPLICATIONS

S/4310/17/FL & S/4311/17/LB Mr Alex Hannam, **6 High Street**. Demolition of part existing flint/rubble party wall and rebuilding in matching materials.

S/4547/17/TP Dr Beatrice Ward, **Village Hall, 15 Coles Lane**. Tree is sited on a public path and growing over a small garden space touching the walls of the house at 11 Granta Leys. This is heavy shading and loss of amenity of a household. Minor bough shortening and balancing of the tree only is required.

S/4599/17/FL Wilde Sky Brewery Ltd, **Unit 8A The Grip Industrial Estate**. Change of use to Microbrewery, Microbrewery taproom and retail facility.

S/0004/18/TP Charlotte Wilson, **5 Essex Gardens**. T1,2 & 3 (Lime trees) as shown on Sketch Map. Crown lift up to 4m . Excessive shading. Crown reduced by 15% in height and 10% on sides. Excessive shading and reduce mechanical stress. Lastly remove dead wood.

S/0016/18/DC Hill, **The Kyles, Long Lane**. Discharge of condition 4 (precise details) of Planning permission S/0978/17/LB.

S/0072/18/DC Mr Mark Hays, **9 Mill Lane**. Discharge of condition 3 (Materials), 4 (Materials) and 5 (Visibility splays) of Planning permission S/3100/17/FL.

The Darryl Nantais Gallery
Fine Art, Framing & Restoration

We offer a wide selection of artwork, contemporary & traditional, local & international, including paintings, prints, ceramics, glassware, sculptures & jewellery. The Gallery also offers bespoke framing, picture restoration and cleaning.

Proprietor: Earl Buckhurst

59 High Street, Linton, Cambridge CB21 4HS
01223 891289 ~ www.nantais-gallery.co.uk
Find & like us on Facebook and follow on Twitter for regular news updates

Tuesday to Friday 10am to 3pm & Saturday 10am to 4pm

ProClean
'Your Complete Cleaning Solution'

- *Carpet Cleaning *Rugs *Stain Removal
- *Car Valeting *Caravans *Motor Homes
- *Upholstery Cleaning *Stain Protection
- *Floor Cleaning / Scrubbing / Sealing / Polishing
- *Pressure Washing of Patios Paths & Driveways
- *Domestic Cleaning * Top Ups & One Off Cleaning
- *Gutter / Fascia Cleaning
- *Contract Office Cleaning (Flexible Options)

TEL: 890433 Mob: 0777 375 8355
74 Bartlow Rd, Linton, Cambridge, CB21 4LY

G. DYE & SONS
**GENERAL BUILDERS,
GROUNDWORK & MAINTENANCE,
CONSERVATORIES & UPVC WINDOWS, KITCHEN &
BATHROOM REITS**

ALSO INTERIOR & EXTERIOR DECORATING
REFERENCES AVAILABLE

For enquiries please call
Mobile:
07961 342887
Tel: 01223 892089
georgedye738@btconnect.com

Free Estimates



Parish Council Matters

Planning appeals - the story so far ...

Parish Council Matters is written, edited and published by the Parish Council with the support of the Linton News Team.

AS I write, we have just completed the hearing for the Horseheath Road planning appeal.

To recap - the Diocese had put in an application for 50 houses, then one for 'up to' 50 houses both with space for allotments. These were refused by the village and South Cambridgeshire District Council (SCDC) planning committee; the Diocese appealed against these decisions. Then there was an application for 'up to' 42 houses and an acre of allotment land, which was heard but not determined at the SCDC planning committee. Another decision made at that meeting was for SCDC to continue the appeals for up-to-50 house schemes, but that they would not defend an up-to-42 house scheme, as they felt the landscape issues had been resolved. In each case the planning officers had recommended approval, but councillors disagreed.

Leading up to the appeal hearing, and following many exchanges of correspondence representation to the planning inspector on the first day of the hearing, it was decided that the first application appeal would be withdrawn, but the appeal would continue on the second application but on an up-to-42 house scheme. At that point SCDC withdrew from the appeal, their witnesses leaving the chamber.

Linton has opposed all applications to build on this site, so we remained to present evidence and oppose the appeal by ourselves. This was more responsibility than I expected, and the process was complex, so I was grateful for the guidance of the inspector. We

were able to represent Linton on an equal basis to SCDC and the Diocese because we had applied for 'Rule 6' status - a technical process recommended and ably handled by Kate, our parish clerk - to which Linton Parish Council (LPC) had readily agreed.

The matter of costs took some time, but LPC were not part of this - we would not have been liable for costs as we were reasonably defending our village and our refusal of the application. Our consultants were good value, we have office back-up, and of course parish councillor time comes free ...

We felt that our case was strong, based on the effects on the landscape, archaeology, heritage assets, topography and geology, that the site was not sustainable, etc. However, as this was an outline application, our submissions on traffic and other issues outside the site could not be considered. Our comments on the site layout, that screening planting was on the same land as the proposals to handle surface water drainage, that protection zones were not agreed, connecting paths were across land not owned by the Diocese, that they did not own the whole site, etc, were again part of reserved matters, and could not be thoroughly examined at the hearing. I hope we got our points across in our written submissions. The full case documentation will soon be back in the parish office, so you can see the extent of the work done by LPC planning group - we worked hard!

We were involved later with s106 and conditioning. I requested that routing agreements for delivery of materials, should not be

through the Conservation Area or via Mill Lane or Back Road, should the applications ever be approved. Affordable housing would be the standard 40%, of which half would be for those with Linton connections - so possibly eight houses, and what is 'affordable' ... ?

The site visit that followed was interesting; the long views and setting could not be appreciated in the drizzle, but the clay soil and surface water certainly could! Trees and hedges planted by the tree warden and SCDC some years ago, showed clearly how screening planting would not be effective in the timescales suggested, and the traffic (although lighter than usual) demonstrated some of the issues - including plenty of emergency vehicles. The view of the site from Harefield Rise and Lonsdale were very helpful - thank you Alan and Monica Clarkson and Dr Lee for allowing access to your gardens.

Thank you also to our consultants, especially to Corrie Newell who guided and supported us through the process. Corrie and Mark, the landscape consultant, presented and responded to the appellant excellently; we needed their help and professional knowledge. Thank you also to Beatrice Ward and Kate Kell, who attended throughout, supporting me and helping formulate questions, to Chris Hine for the maps and to Amy for her tweets!

Next week we have the Back Road appeal, against the Gladman application for 95 houses. Our work to defend the village against these unwanted and inappropriate developments continues ...

Cllr Enid Bald

Sharing the roads

THIS article is being written in response to letters the parish council has received.

As an initial thought, thanks should be given to Cllrs Enid Bald and Beatrice Ward for their input to the Greater Cambridge Partnership (GCP, formerly known as City Deal) on this subject in relation to Linton. Plans to improve the flow of buses through our High Street had included removing the pavements at the start of the one-way system near the Co-op and making the road a 'shared space' for all road users from pedestrians through cyclists to vehicles including buses. Thankfully the GCP listened to our safety concerns in this matter and these plans should not be going ahead.

Have you ever found yourself shouting words to the effect of, "Stopping at red lights/using one-way roads in the correct direction applies to cyclists too!" or, "Drivers are supposed to give cyclists as much room as they would a car when they overtake!" or, "That was far too close for comfort!" or maybe the last of those has been shouted as one very colourful expletive ... before you picked yourself up from the ditch/hedgerow that you were running/cycling past when a car/van/lorry left you with no other alternative, except a trip to A&E.

60% of all fatalities on the road occur on country roads, where three people lose their life each day. This figure is nearly 10 times higher than the number killed on motorways, and the numbers for vulnerable user groups (usually defined as pedestrians, pedal cyclists and motorcyclists) have much higher casualty rates than all other road user groups.

Most of us use the roads as a driver (of many different vehicles), horse rider, cyclist or pedestrian (including as a runner) and many of us in more than one of these categories. We all have responsibilities to other road users to keep each other and ourselves safe, but how many of us, aged over 17 and no longer learning for their theory test, have recently read or even just scanned through the latest update of the *Highway Code*? It was last published on 1st October 2015 and last updated on 28th July 2017.

As letters received have specifically referred to dangers when cycling, THINK! offers the following advice in their Cycling

campaign:

THINK! advice for when you're driving

Look out for cyclists, especially when turning - make eye contact if possible so they know you've seen them.

Use your indicators - signal your intentions so that cyclists can react.

Give cyclists plenty of space when overtaking them, leaving as much room as you would give a car. If there isn't sufficient space to pass, hold back. Remember that cyclists may need to manoeuvre suddenly if the road is poor, it's windy or if a car door is opened. Always check for cyclists when you open your car door.

Advanced stop lines allow cyclists to get to the front and increase their visibility. You must stop at the first white line reached if the lights are amber or red and allow cyclists time and space to move off when the green signal shows.

Follow the *Highway Code* including 'stop' and 'give way' signs and traffic lights.

THINK! advice for when you're cycling

If a lorry is indicating left, passing on the inside can be dangerous, hang back at the junction to reduce the risk of a collision.

Ride positively, decisively and well clear of the kerb - look and signal to show drivers what you plan to do and make eye contact where possible so you know drivers have seen you.

Avoid riding up the inside of large vehicles, like lorries or buses, where you might not be seen.

Always use lights after dark or when visibility is poor.

Wearing light coloured or reflective clothing during the day and reflective clothing and/or accessories in the dark increases your visibility.

Follow the *Highway Code* including observing 'stop' and 'give way' signs and traffic lights.

THINK! recommends wearing a correctly fitted cycle helmet, which is securely fastened and conforms to current regulations.

The *Highway Code* is free to access online at <https://www.gov.uk/guidance/the-highway-code>

Cllr Kate Kell



The Hundred Parishes Society

THE overall population of the Hundred Parishes increased by around 1% a year between the last two censuses, 2001 and 2011. As district councils finalise Local Plans for the next 15 years, generally catering for even faster population growth, there is concern that our familiar landscapes will undergo significant change.

We may be able to take comfort from the European Landscape Convention, to which the UK is a signatory. This encourages local authorities to introduce exemplary, long-lasting policies or measures to protect, manage and plan landscapes. The overall aim is to achieve sustainable landscapes that are as visually biodiverse and as culturally rich as possible, thus meeting society's social, economic and environmental needs.

The character of our villages and small towns and their setting within the wider landscape are fundamental aspects of what gives the Hundred Parishes its sense of place. Responsibility for keeping it special is vested in our elected representatives.

I encourage you to observe, enjoy and perhaps photograph the seasonal changes within your surrounding countryside. Sown crops germinate, flourish and are harvested. Trees mature or are felled. Fresh leaves soften bare twigs in spring and fall again in autumn. This cyclical rhythm has inspired many local, notable artists and examples of their work can be viewed in the Fry Art Gallery in Saffron Walden.

The Gallery traditionally closes for the winter months, but this year there is an exhibition at Fry Art Gallery Too, located next to the main entrance gates of Saffron Walden Museum, in Museum Street, Saffron Walden. Gallery Too is open until 25th March 2018 on Saturdays from 11am to 5pm and Sundays from 2.15pm to 5pm. The Museum is always worth another visit. Winter opening times are 10am to 4:30pm Tuesdays to Saturdays and 2pm to 4:30pm on Sundays.

Tricia Moxey, trustee
www.hundredparishes.org.uk

sqcarsales.co.uk

for service & quality

SQ Car Sales

Mini Specialist

t: 01223 778 448 m: 07908 128 164

PLUMBLINE

PLUMBING AND HEATING ENGINEER
PROFESSIONAL DOMESTIC PLUMBING SERVICE

Including Property Maintenance
Painting: Tiling: Plastering: Carpentry

Call John on
01223 893903

Supcik@talktalk.net
Fully Qualified and Insured

Friendly and Reliable Service No Job Too Small



Acupuncture and Massage in Linton

Some of the conditions acupuncture can help ...

- sports injury and tension
- back, knee, hip, shoulder and elbow pain, rheumatism
- fertility optimisation, IVF, pregnancy and menstrual
- headache and migraine, stress
- high blood pressure and circulation conditions
- anxiety and addictions

Peter White MBAC, MSc, MBAC.

Call: 01223 891145 for an appointment or free assessment

Email: enquiries@lintonhealth.co.uk

MALLYON & DONALDSON

Linton

*Specialising in both Modern and
Traditional building methods.*

Tel: 01223 891267
Mob: 07941 220868

All contracts finished to a high standard.
Reliable service. Local references available.



Cambridgeshire Family Chiropractic Centre

Bespoke massage and chiropractic care
for aches and pains

Specific techniques for pregnancy and children
15 years' experience

Call 07870568548

www.cambridgesfamilychiro.co.uk

SHINE

TRADITIONAL WINDOW CLEANING

EXTERIOR AND INTERIOR WINDOWS, GUTTERS,
FASCIAS, CONSERVATORIES AND PATIO CLEANING

TEL. 01223 893529 MOB. 07587 866309

FREE QUOTATIONS

FULL PUBLIC LIABILITY INSURANCE

SHINEWINDOWCLEANINGSERVICES@GMAIL.COM

Councilminutescouncilminutescouncilminutescouncilminutes

ABBREVIATED minutes of the Linton Parish Council (LPC/PC) meeting held at the Cathodeon Centre on Thursday 14th December 2017.

Present: Cllr Paul Poulter (chairman); Cllr Enid Bald; Cllr Simon Hill; Cllr Graham Potter; Cllr Chris Hine; Cllr Dr Beatrice Ward; Cllr Amy Smith; Cllr John Bald; Cllr Kate Kell; Cllr Angharad Hammond. Clerk: Ms Kathryn Wiseman. County & District Cllr Henry Batchelor; District Cllr John Batchelor. Members of the public: one.

Apologies for absence: Cllr Dr Brian Cox; Cllr Brian Manley; Cllr Merrie Mannassi; Cllr Chris Negus.

Councillors’ declarations of interest: Cllr Poulter and Cllr Hine declared a pecuniary interest in the update on Horseheath Road planning applications items. Cllr Hammond declared a pecuniary interest in the update on Back Road planning application item.

Councillor vacancies: There is currently one vacancy available for co-option.

Chairman’s comment: The chairman thanked the planning committee and its chair, Enid Bald, for their hard work and commitment on the recent planning applications.

The chairman also commented on the recent success of the Friends of St Mary’s Quiz and noted that local organisations within Linton have really shown community spirit.

Open forum for public participation: A resident in attendance, Mr Buckton, wished to speak on issues with traffic on Hadstock Road. The chairman decided, with the agreement of council, to bring this item forward in the agenda to allow the resident to participate. Mr Buckton raised concerns that the footway is incredibly narrow and in poor condition with no lighting and advised that the speed limit is regularly being ignored on this road. Mr Buckton was himself hit by a car recently speeding that was unaware of the traffic limit, estimated to have been travelling at approximately 50mph. The resident had contacted Lucy Frazer MP regarding this issue, Lucy Frazer has responded and although Cambridgeshire County Council (CCC) has acknowledged the letter they have yet to respond. The resident has requested information regarding mirror installation and been provided conflicting information. Mr Buckton requested a gateway approach as a traffic calming measure to be implemented on a temporary basis with speed checks to see if this is effective.

District & County Cllr Henry Batchelor advised that the CCC Highways reporting tool is inadequate which is causing a delay in response but offered to pass this concern onto the correct officer to deal with this in terms of preventative measures. Cllr Batchelor added that there is an option of reducing the speed limit however this is rarely kept to and the commercial traffic adds to this issue. There are speed gates on every entrance to the village but this is a particularly difficult road to put this on. Accidents with cyclists have happened also and the pinch in the road by the bridge makes this issue worse. It was also noted that accident rates are incorrect as they only count fatalities or serious injury which is a key weakness in the system. Cllr Batchelor requested the email be forwarded so that he could direct this to the correct department at CCC Highways to review this. The resident left the meeting following this item.

District and County Councillors’ reports & business: Written report: noted. District & County Cllr Henry Batchelor advised that South Cambridgeshire District Council (SCDC) jumped the gun making assumptions about the review from the inspector with regards to the Local Plan. The current advice remains that no weight can be given to the emerging Local Plan at this point in time. Cllr E Bald, the clerk, the planning committee and SB Printing in Linton were all thanked for their work on this by the chairman and Cllr J Bald.

Cllr Hine also raised with the district councillors that the planning officers report has not been published for the third Horseheath Road planning application S/3405/17/OL as of yet, despite exceeding the time limits.

Planning matters: Update on planning application S/3405/17/OL, the third application for the Horseheath Road site following

the SCDC committee meeting on the 6th December 2017: Cllr E Bald thanked District & County Cllr Henry Batchelor for his assistance in key questioning at the SCDC hearing and advised that this application was deferred. This was originally supposed to be rescheduled for the January 2018 meeting, however it has since been deferred again to February to ensure it was not heard during the public inquiries.

Update on the current planning applications due to be heard by the planning inspectorate for the Horseheath Road and Back Road sites: Back Road documents will be reviewed. Cllr Smith proposed that an additional £15,000 be reassigned from the general reserve to the planning consultation budget. This was seconded by Cllr J Bald. Agreed. A second proposal was then made to agree to the employment of the landscape consultant, Mark Flatman from Liz Lake Associates, to be employed to work on the Back Road appeal. Proposed by Cllr Kell, seconded by Cllr E Bald. Agreed.

The meeting was held for five minutes at this point and resumed at 8:31pm.

Review of jobs listed for Local Handyman Services: The remnants of the tree that was cut down in the churchyard in September still needs clearing and the seat on a bench at the recreation ground still needs repairing – it was requested that this be addressed as a priority on Ian’s listing. The new list was proposed by Cllr J Bald, seconded by Cllr E Bald. Agreed.

It was also noted that Linton Parish Council has been very pleased with the standard of work from Local Handyman Services.

The Beacon Youth Trust: Written report for November 2017: Noted. Cllr Potter requested that more clarification is provided in relation to the activities that the Beacon Youth Trust participate in. Clerk to request.

Traffic issues: The Market Square: Mr Williams regarding Market Square parking: It was agreed by council that this should be reviewed by the traffic working group. Mr Sackin regarding permission for the Christmas Market: Noted. Mr Clerke regarding Market Square and High Street parking: It was agreed by council that this should be reviewed by the traffic working group.

CCC regarding proposed new bus stops in Balsham Road: Proposed by Cllr Potter, seconded by Cllr Hammond. Agreed.

Ms Holroyd regarding issues with drivers and cyclists in the village: Cllr Kell agreed with the content of the letter and offered to write an article for the Linton News Parish Council Matters page.

CCC regarding a Temporary Traffic Order for A1307 between Linton and Horseheath on 20/01/18: Noted.

Consideration of removal of the moles on the recreation ground: It was proposed by Cllr Poulter that the clerk should be authorised to obtain three quotations and action this without returning to council, providing the total sum is less than £500.00. This was seconded by Cllr Hine and put to a vote. Agreed with seven in favour, none against and three abstentions.

Review of the recommendation from the finance committee on the precept for 2018/2019: Cllr Potter, chair of finance, provided a brief introduction to the concept and workings of the precept and finances within local government to the council as there are several councillors for which this will be the first precept since taking office. Cllr Potter presented the recommendation from the finance committee to council of an approximate increase of just over 4% on that of last years, with a total precept amount of £171,709 being recommended. This would allow for an approximate breakdown of £157,709 for the general running costs (200 budget codes), including £26,571 being assigned for S137 funds, and £14,000 being assigned to long term projects (in the 900 budget codes). It was also noted that the existing long term fund budget codes required review and that the finance committee has also prepared a recommendation for these. It was proposed by Cllr Potter that the recommendation put forward from the finance committee should be accepted by council with no changes, this was seconded by Cllr Poulter. Agreed.

It was then proposed by Cllr Kell that the existing budget

codes should be reviewed separately at a future meeting. This was seconded by Cllr Smith. Agreed.

Consideration as to whether to have the Occupancy Agreement for Linton Action for Youth reviewed by Ashton Legal, the solicitors that drafted the original contract: Cllr J Bald proposed that the clerk action and update the agreement without review from Ashton Legal. This was seconded by Cllr Smith. Agreed.

Consideration of correspondence received: Mr Harris request to hold his annual Fun Fair on the recreation ground 17th-20th May 2018: Proposed by Cllr E Bald, seconded by Cllr Hill. Agreed.

Commonwealth War Graves Commission request for memorial with no fee: Cllr E Bald proposed there to be no charge on condition that the site is reviewed and the location agreed upon by all parties, including HJ Paintin, the PC office and the cemetery working group. This was seconded by Cllr Ward. Agreed. Clerk to arrange a meeting to review.

The Open Spaces Society request for donation to fund Lost Commons work: Cllr Poulter proposed a donation of £25.00, Cllr Smith seconded. Agreed.

The Shelford Medical Practice regarding the proposed merge with Granta Medical Practices: Clerk to contact and request further information.

LCPAS regarding membership renewal to a cost of £100 for the annum: Cllr J Bald proposed, Cllr Hine seconded. Put to a vote with nine for and one abstention. Agreed.

Note: Copies of the full minutes, reports and documents referred to above can be inspected at the parish council office.

New number 19 bus stop

THE 19 bus is getting a new stop. The stop is on Balsham Road and has been an unofficial stop up until now. The 19 bus goes between Haverhill and Burrough Green and goes through various villages. The sign will inform passengers that there is a stop on either side of the road. The service runs every weekday and calls at Bartlow, Shudy Camps, Weston Colville, West Wickham and West Wrating. For these villages the 19 service is the only bus service they have and not everybody drives. Some of the people use the service to go to Haverhill others see friends or family in other villages. Students from neighbouring vil-




Picture taken by Simon Hill lages use the service to come to Linton so they can catch the 13 bus into Cambridge. I’m sure that the students would prefer to go straight into Cambridge rather than come to Linton and then wait for the 13 bus. The service is run by Star of Haverhill. If you catch the 19 service at the Swan bus stop the bus is shown on the real time timetable. The planning application for Balsham Road says there is a regular bus service along the road.

Cllr Simon Hill

LINTON PARISH COUNCIL

The Village Hall, Coles Lane, Linton, Cambridge CB21 4JS Tel: 891001
Clerk to the council – Ms Kathryn Wiseman
Email: lintonpc@btconnect.com
Website: www.lintoncambridgeshire-pc.gov.uk
Facebook: www.facebook.com/lintonpc
Office open: Monday, Tuesday, Wednesday and Friday 9am – 12noon. Closed on a Thursday.
Or by appointment
Dates for full council meetings:
15th February and 15th March 2018
All meetings held at the Cathodeon Centre commencing at 7.30pm



Watch batteries and straps fitted while you wait.
Jewellery repairs including sizing and polishing.

All repair work carried out on the premises by a professional with 40 years experience.

We stock a selection of:
Silver Jewellery • Photo Frames •
Collectables • Toiletries •
Greeting Cards • Gift Wrap



61 HIGH STREET, LINTON, CAMBRIDGE, CB21 4HS
TEL: 01223 894225

Su Matthews



Back 4 Good Practitioner
Level 4 Advanced Pilates Teacher
Back Care Professional
W: www.bodydesignpilates.co.uk
E: bodydesignpilates@hotmail.com
M: 07986 692334





McKenzie & Haywards Garage LTD

MOT by appointment while you wait
Servicing, Collection & Delivery Service

Unit 3 & 4, Lintech Court
The Grip Industrial Estate
Linton, Cambs
CB21 4XN

Tel : 01223 894140
Fax : 01223 890035
mhgarage@btconnect.com

TIM PHILLIPS & Co.

Accountants

Established 1991

Independent, specialist service for:

**Small Business • Self Assessment
Personal Taxation**

Free initial consultation – no obligation
EASY, FREE PARKING

Copley Hill Business Park, Cambridge Rd., Babraham
Off A1307 between Wandlebury and Babraham
Tel: 01223 830044. www.tpaccounts.co.uk

Carpentry, Plumbing, Tiling
Door/Window Replacement
Kitchen/Bathroom Refitting

Fencing & Decking
Painting/Decorating
Flat Pack assembly

Property Maintenance

Steve Jackson

stevejacksonltd@hotmail.co.uk

Extensions and Conversions
Linton Based

Steve Jackson
Office 01223 893896
Mobile 07963 854653

ADMIRAL ESTATES

Residential Sales and Lettings

- Local Linton Office
- Cambridge Office
- Specialists: Linton & Local Villages
- 20 Years Experience



Working with Terry Waite & Emma Cambridge

Do You Need Help With Your Property?

Call us Now: 01223 891227

www.admiralestates/linton