

Farmers' Market  
6<sup>th</sup> February  
from 9am  
Linton Village  
College

Over 2,350 copies  
distributed  
free in Linton,  
Hildersham,  
Hadstock &  
Bartlow

# THE LINTON NEWS

www.linton.info e-mail lneditor@linton.info

February  
2016

Vol. 29 N° 11

Publication date  
Monday 1<sup>st</sup> February

E & E PLUMRIDGE  
Design & Print  
41 High Street  
Linton  
01223 891407

Established 1987

## Linton residents receive New Year Honours

One gives hope to the sick and disabled .....



Rachel with her goddaughter, Sofia, during her traditional Russian orthodox christening in Belarus.



Rachel with her assistance dog Sam, and Widget her rescued chinchilla.

Photos supplied by Rachel

**PAEDIATRICIAN** Doctor Rachel Furley of Linton was awarded an MBE in the New Year's Honours list for services to sick and disabled children in the UK and Belarus.

Rachel is the founder of Bridges to Belarus, a Cambridge-based charity, set up to help children in the former Soviet republic affected by the Chernobyl disaster.

She became interested in Belarus at secondary school, helping with fundraising for a charity, which brought Chernobyl children to the UK for a four-week visit to give them relief from the radiation they were exposed to. She realized that after their stay they had to go back to very different conditions in Chernobyl and so, whilst a medical student, she set up the Bridges to

Belarus charity to help the children and their families in Belarus itself.

Rachel said "I run my charity, Bridges to Belarus, which the Linton Heights have been fantastically supportive of since Mr Puxley has been head there.

I'm also patron for Wheels for Martin's Friends, which is a charity set up in memory of Martin Dellar, that helps fund mobility equipment for local people.

I used to volunteer for the Upside Down Club, which is a sports club for children who use wheelchairs, based in St Ives, but haven't been able to have much involvement there for a while due to work commitments."

A very worthy recipient of the MBE.

LNT

## .... Another to multiple sclerosis sufferers

THE Department of Clinical Neurosciences' Professor Emeritus of Neurology, Alastair Compston was awarded a CBE for his services to Multiple Sclerosis Treatment.

He pioneered the use of the drug Alemtuzumab to treat MS, beginning his research in 1991.

Twenty-two years later, in 2013, the drug was approved for use in treating the early stages of MS giving much-needed hope to sufferers.

Congratulations to Professor Compston who formerly lived in Linton in the Mill.

LNT

LMS

## An evening of music



Alex Redington  
Picture supplied by LMS

D minor, Mozart's Violin Sonata in E minor and Ravel's Sonata for Violin.

One of the leading violinists of his generation, Alex Redington is joined for this concert by Siu Chui Li, the acclaimed collaborative pianist.

Both artists have an international reputation as recitalists and concerto soloists and are associated with the Doric String quartet of which Alex is the first violinist.

To enjoy an evening of superb music, come to Linton Village College at 7.30pm on Saturday 6<sup>th</sup> February.

Tickets cost £12, £10 concessions, £2 for young people to age 21 and £25 for a family of two adults and two children.

These are available at the door or in advance from Sweet Talk News, 77 High Street or from Saffron Walden Tourist Office.

Linda Bird



Siu Chui Li  
Picture supplied by LMS

**Editor's note:**  
As we were going to press we heard the sad news of Margaret Hearn's death. We send our sympathies and hope to have the story of her founding LMS in the next issue.

Editor

## When will we ever learn ?

ON 10<sup>th</sup> January Kate France wrote to the editor as follows:

"In recent months various areas of the country have been badly affected by flooding. Building on flood plains has been part of the problem.

Having experienced sewage and flood round my house on several occasions, I am very concerned about Bidwells application to build on land at the end of Bartlow Road (see Linton News June and July 2015).

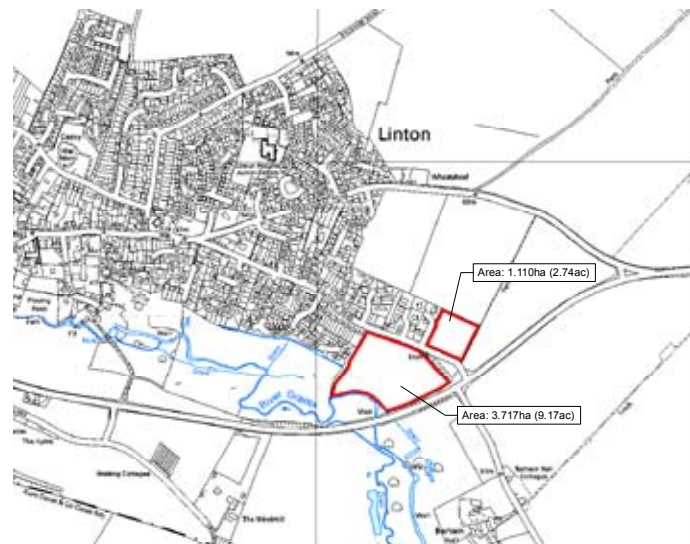
House purchase is an enormous commitment and buyers should not be put at risk of flooding around their property.

I think it is important for the newer residents of Linton, Bartlow, Hildersham (and Hadstock, although they are not so immediately affected) to know how recently the villages were flooded and the dire consequences.

The *Way We Were* article on page 6 is devoted to historical pictures of flooding in Linton, this is an article done by Linton News editors as Garth is ill in hospital.

The problem is that water gathers up-stream, from Ashdon onwards, then flows rapidly into our part of the valley, creating a deluge which floods parts of the village.

The Parish Council is working with South Cambridgeshire District Council (SCDC) on a scheme to try



Planning application housing map of the East side of Linton (Courtesy of SCDC and Bidwells)

to hold back the water near the A1307 and in the Pocket Park, to be released slowly over several days. This is a long term project as other landowners will be involved, not just village-owned land but we have hopes to address this problem soon.

The planning application from Bidwells for building in Bartlow Road will affect the working of the floodplain and add to flood risk for areas near and bordering the river and the whole centre of the village. The site encroaches on the flood plain and the loss of open space to soak up the rain will cause greater run-off into the river, increasing the potential to flood.

The balance pond suggested is not a suitable

solution for the area as it will fill and overflow in times of heavy rain, then dry up in dry weather. Generally this is more of a hazard than a solution, as it was designed for a totally different area.

We have recently seen the effects of building on flood plains and cannot have that happen to Linton."

As if to prove a point, the next day, Kate came back with photos (from Simon Hill), showing that there was high water in Linton and the lower end of the field, to the right of Bartlow road as you exit Linton, was flooded.

If the water had been higher in the village, there is no doubt that more of the field would have been flooded.

LNT



High water flood alert at the Dog and Duck taken on 11<sup>th</sup> Jan 2016

Photo by Simon Hill



Flooding of the area below the Bartlow site taken from the A1307 on 11<sup>th</sup> Jan 2016

Photo by Kate France

## Correction and more

IN the article last month on new years resolutions on page 1, in the third paragraph beginning ...

*Every third Sunday a group sets off at 11am from Church Lane to do a brisk walk with possibly a pub lunch.*

The contacts should have been Pamela Phipps, 897858 and Sheila Bennett, 890171

Also in the same article we mentioned a few places and organisations where you can go for exercise.

Unfortunately we could not mention all of them and were criticized for that.

To find out more, read the posters in the village hall (there is another Pilates group that operates there), or refer to the website of Linton Village College and look at the articles and adverts.

## You came up trumps

WE were delighted to have had seven offers of help following our advert in the January issue. Thanks to all who came forward, we should have already made contact with you by the time this is published.

Volunteers offered for different aspects of our work. Fear not we will be finding something for everyone to do in the coming months. If you were going to volunteer, please do so as we still need more.

LNT

## Too good for jumble...

I THINK it is time to reduce this feature as owners don't always tell me when items are no longer available - which can be disappointing for a prospective buyer. Items will therefore only be advertised for three months. The following are still available.

A Smiths Timeguard 24 hour timeswitch controller (as new), the child's blue Raleigh Magic bike, 16in x 1.75in wheels, the black glass TV unit in excellent condition 80cm long x 45cm wide x 53cm high with two shelves, and a brand new large flat panel wall mount with tilt for plasma & LCD screens size between 37in and 61in.

To buy any of the above or to offer an item to profit a charity, please contact Kate France on 891602 or email kfrance@profsoundconsult.com NB: The donor chooses the charity to receive the money.





## Sainsbury's sport accolade for the Heights

OVER the last 15 months, Linton Heights Junior School has really put itself on the sports map within South Cambridgeshire. This academic year we are very proud to announce that the school has been awarded the Sainsbury's School Games Gold award – one of only six schools in Cambridgeshire to be awarded this prestigious accolade. This merit is in recognition of the sporting success we have had in the last year and the sporting opportunities which we currently offer our pupils.

In December our cross country team competed at South Cambs Cross Country Championships at Wimpole Hall and we are very pleased to announce that LHJS came first overall. We are so proud of all the runners who have trained so diligently and who utterly deserved to win. The write up in Cambridge Evening News read "Linton scales the Heights in victory".

Additionally, we have also competed at other South Cambridgeshire events such as Tag rugby (third place), High 5s Netball (first place), Football (third place) and as well as these we have competed in the cluster events with Netball A and B teams both runners up and our Football A team runners up and B team winners.

Not only are more children attending sports and other clubs than ever before but the standard of pupil performance is at an all-time high and continues to improve.

The diligence and commitment of pupils and staff alike are to be praised, however it is the inspiration, skill and dedication offered by our sports leader, Mr Dan Penfold, that has allowed our pupils to excel.

Here's to a successful 2016.

James Puxley, Headteacher

*As an apology, we say thank you to Millie Docking who was unnamed author of the Children of the World article in the January edition.*

## Support the Bartlow Walk



THE 2016 Bartlow Walk on 1<sup>st</sup> May will support Addenbrooke's Diabetes Team, which is based at the Weston Centre at Addenbrooke's. It is part of the East of England paediatric diabetes network, which supports children and their families across the region, seeing about 300 new young patients each year.

Symptoms of type 1 diabetes can often be missed or ignored and children may become

very ill and be admitted through the emergency department. The common symptoms are going to the toilet more often, feeling very thirsty or tired and weight loss. If parents have any doubts they should see their GP and arrange a test.

Type 1 diabetes develops when the body's immune system attacks and destroys the cells that produce insulin. Scientists don't know why this happens but they think it can be stress-induced or triggered by illness. If the condition is not treated and controlled appropriately it can cause a number of long-term complications, so early diagnosis is crucial.

The Network team have set up a programme of region-wide diabetes camps for children with type 1 diabetes. Kate Wilson, Paediatric Diabetes Network Manager says: "The camps are about giving children and young people the opportunity to come together, make new friends and try new and exciting experiences at the same time as learning to take control and become more independent in the management of their type 1 diabetes." Each camp costs £2,500 to run; the team are hoping to hold three camps in 2016 and this is what the 2016 Bartlow Walk will support. Truly an important and engaging cause.

An offer from the Saffron Walden Lions to perform car park security patrols throughout the day has been warmly accepted. Graham Howat, Walk co-ordinator, 891732

## Linton Village Cricket Club registration day

DIFFICULT to imagine when writing this on a dreary grey January afternoon, but we at Linton Village Cricket Club are already looking forward to balmy summer evenings and exciting cricket matches being contested on the recreation ground and nearby village greens.

The junior section is holding its annual registration day between 12noon and 1pm on Saturday 19<sup>th</sup> March at the Pavilion for any interested new players to come along, meet

the coaches and sign up for the coming season. We have teams for boys and girls from under 10s (school years 4 and 5) through to the under 15s (year 10). The fee for the year's membership is £45 (£35 for any additional siblings).

For returning players, the coaches will be emailing the renewal forms and Codes of Conduct to you so that you can re-register by email. Any queries please contact me. Email: esther.cox01@gmail.com Esther Cox, 07800 798155

## ACEs back in action

HAPPY New Year. Following the festive buffet on 26<sup>th</sup> November, we decided that there was so much happening over the festive season that ACEs could take a break.

We will be back at 12.30pm on 11<sup>th</sup> February with a fish and chips lunch at the sports pavilion. We will have a speaker; the topic and speaker will be advertised on the notice boards, as usual.

Older people's care provision is under review. As a result, Age UK Cambridgeshire and Peterborough will be merging. These areas have very different needs and demographics but expansion of community warden schemes

across the area is likely, as schemes such as ours are so successful. Age UK still offers a link to handyman, cleaning, safer homes and bobby schemes. The services are preventative and offer security for clients as they can get help, rapidly, without worrying about excessive costs. Please contact Age UK or the community warden if you would like their support.

Linton Parish Council was thanked for its annual grant. Without LPC and grants from District and County councils, the warden scheme would not exist, so thanks to you all.

Enid Bald 891069



lintongrantaplaygroup

Pre-school and toddler group  
Linton, Cambridgeshire

WELL, what a busy start to 2016 Linton Granta Playgroup has had, welcoming new children and their families to the setting. We had an energetic visit from our regular dance lady, Natalie, from Made2Move, as well as finalising our plans for our annual jumble sale. The jumble sale was a huge success, generating funds for our end of academic year trip in July. It was good to see familiar faces from our community as well as some from beyond. We would like to thank all those people for their generosity in donations of jumble as well as those who purchased a bargain.

We will be developing our garden space this term in our designated gardening club afternoons. If you have green fingers and could offer your knowledge, experience and a little bit of your time we really would appreciate it. Please do call us if you think you would like to join us.

We have limited spaces for the remainder of this term. We are open mornings: 9am to 12noon M-F, lunch: 12noon to 12.30pm M-F and afternoons: 12.30-2.30 pm M, W, Th, F. Please contact us on 07806 744864 to book your visit and to enquire about availability, or email office@lintongrantaplaygroup.

Karen Thompson, Playgroup Leader  
Janine Polley, Deputy Leader

## Infant school seeks activity club volunteers



FEBRUARY has arrived. At the time of writing, the day is overcast, grey and raining; I hope there is an improvement when this is published. Or maybe we will have some snow.

As mentioned in last month's newsletter, our theme this term is Flight. We have had many offers of help from our parent body and we are gearing up for an exciting term with lots of visitors, passing on their experience and enthusiasm.

Parking in and around the school has always been an issue; the school was built before the existing volume of traffic. However, we ask that parents park and drive considerably and if at all possible, not use the car and walk to school.

The PSCO will be

monitoring the parking in and around the school, with tickets issued if necessary.

Do you have a skill or hobby you are able to share with the children? We are looking to increase the number of lunchtime clubs on offer to the children which are run by volunteers.

We are asking for 30 minutes of your time a week and in return we can give you an enthusiastic group of children who will benefit greatly from your expertise.

Do you make jewellery, knit, draw, cook, dance, play scrabble? Our clubs are run 12.30pm-1pm and we will offer support to help make your club a success. If you are able to help out, please contact the school on 891421.

Louise Clark,  
Headteacher

## Head resigns

LINTON Infant school has informed the Linton News of the following letter to parents and guardians:

Dear parents and guardians,

I am writing to inform you that Mrs Louise Clark has, sadly, made the decision to resign her post of Headteacher of Linton CE Infant School from the end of this academic year, on 31<sup>st</sup> August 2016.

Louise has been a very successful Head of our school and she has ably overseen and implemented many beneficial changes during her time of leadership, never losing sight of her prime objective; that every child should achieve his or her potential in a secure and happy environment.

The Governors recognise the many strengths that Louise has and wish to record, at this point, their sincere thanks for all that she has done and will continue to do throughout the next two terms.

The Governors will now begin the process of securing a new appointment and wish to assure you of our commitment to ensuring a continuity of strong leadership and vision for this school.

Yours sincerely,

Lawrence Powell, Chair of Governors

*Editor's note: We shall be very sorry to lose Louise but wish her all the best for the future*

## LOCAL HOME TUITION

Pamela Phipps

MSc, PGDH, TEFL,  
Homework support  
Revision planning  
Exam preparation  
Assignment writing  
Afternoons and weekends  
Fully CRB checked

Cambridgetutor2015@gmail.com  
01223-897858



## MOBILE CHIROPRACTIC SERVICE

GCC-Registered Chiropractor

ALEXANDER M SMITH

01223 967565

SOUTH CAMBS AREA  
(Based in Linton)

Effective care in the comfort of your home  
- Low back pain & sciatica  
- Neck pain & headaches  
- Muscle spasm/tension  
- Shoulder & Knee pain  
- Postural problems  
www.alexandersmithchiropractor.co.uk

**G. DYE & SONS**  
GENERAL BUILDERS,  
GROUNDWORK & MAINTENANCE,  
CONSERVATORIES & UPVC WINDOWS, KITCHEN &  
BATHROOM REFITS  
ALSO INTERIOR & EXTERIOR DECORATING  
REFERENCES AVAILABLE  
24 Brinkman Road  
Linton  
Cambridge  
CB21 4XF  
Tel:  
01223 892089  
Mobile:  
07961 342887  
georgedye738@btinternet.com

Free Estimates

## OLD GRANARY ORGANICS

Don't Panic .....its Organic!!

Organic produce from local growers and suppliers in our beautiful village of Linton.  
Also organic products like kidney beans and other pulses as well as herbs and spices produced in the U.K.  
Of course fresh organic eggs.

Delicious organic scoop ice cream as well.

Open 6 days a week.

Email: oldgranaryorganics@mail.com

www.facebook.com/theoldgranaryorganics

Box delivery available

96 High Street, Linton.

Telephone: 07583 187560

## Designer Drapes

Linton rd Hadstock

For all your Curtains & Blinds give us a call.

Curtain alterations.

Free measuring

Fitting service

Haberdashery

Quilting fabrics

Upholstery service

Fabric sold by the metre

PATCHWORK LESSONS

Mondays and Tuesdays

Book your place now

spaces limited

Sewing machine repair and service

Remnants and Rollends

designerdrapescurtains.co.uk. designerdrapes2@gmail.com

## Chapel

Independent Financial Advisers

SPECIALIST ADVICE ON  
Personal Financial Planning – Pensions  
Investments – Mortgages – Protection

FREE Initial Consultation – Without Obligation



Ian Cross DipPFS

01223 892821

E-mail: [ian@chapel-ifa.co.uk](mailto:ian@chapel-ifa.co.uk) Website: [www.chapel-ifa.co.uk](http://www.chapel-ifa.co.uk)

De-Salis House, 6 Hillway, Linton, Cambridge, CB21 4JE

Chapel Independent Financial Advisers LLP is a limited liability partnership which is authorised and regulated by the Financial Conduct Authority

Registered in England & Wales No. : OC350431

## SQ Car Sales

Quality used Cars

Lintech Court, The Grip, Linton, Cambs CB21 4XN

[www.sqcarsales.co.uk](http://www.sqcarsales.co.uk)

01223 778 448

m: 07908 128 164

## Benten & Co.

Chartered Certified Accountants

We are a friendly, well established firm, large enough to deal with most accountancy and taxation matters.

Please telephone for an initial consultation  
(without obligation)

Abbey House, 51 High Street, Saffron Walden

Telephone 01799 523053

[www.benten.co.uk](http://www.benten.co.uk)



# Can I help? I'm a paramedic



OUR speaker, Bob Harding-Jones, recently retired from the ambulance service, because most of the patients he was carrying downstairs were younger than him, and he has a wealth of funny reminiscences.

The most difficult calls are behind closed doors, where access cannot be gained. A policeman called to the house of an elderly lady not seen for a few days, smashed the glass and fell in, only to find the lady was watching TV. The neighbours hadn't thought to say that she was profoundly deaf. A lady called saying she felt unwell and when the paramedics arrived she said she had run out of fags and could they get her some.

The call centre uses a triage system to assess if an ambulance is needed but one slipped through the net. A man suffering from constipation was eventually relieved by a dose of gas and air which acts as a muscle relaxant.

One call came from a man who couldn't sleep because there was a black snake in his bed, although it was discovered to be his laptop wire.

While removing a dead body (wrapped in a blanket so people wouldn't get upset), a neighbour came along, pushed his head right in the deceased's face and said: "Hello, you are looking a lot better today".

An elderly man being taken to hospital for an ECG and blood tests was asked what he read at university before he retired and he answered: "Oh, the Daily Mirror mainly".

Our next meeting in the village hall is on 2<sup>nd</sup> February when the speaker will be Clare Mulley, the talk entitled The Spy Who Loved; the secrets of one of Britain's bravest wartime heroines. New members or visitors always welcome.

Sally Proberts, 891021

## The magic of the unicorn

KEN Drake will give one of his popular talks on different areas of London to Linton Historical Society at 7.30pm on Tuesday 16<sup>th</sup> February in Linton Village Hall, looking at the history of Trafalgar Square.

On the 1<sup>st</sup> December Chloe Cockerill guided us through the history of the unicorn, as depicted in many cultures for millennia.

Despite its essential characteristics of single horn, cloven hooves, lion's tail and a goat's head, the unicorn's appearance has varied from being an enormous, powerful animal to the more dainty horse like creature popular nowadays.

Hebrew scholars in the 5<sup>th</sup> Century AD believed that an animal described in the Old Testament was a unicorn, leading to its popularity in medieval art.

The legend that it could only be tamed by a virgin, developed into an association with the Virgin Mary and Jesus Christ. However, after the Reformation, images of the

unicorn became more secular and triumphal. In 1603, when James VI became James I of England, he united the Scottish heraldic unicorn and the English lion in the royal coat of arms.

Chloe also showed us heraldic images of the Paris family of Linton, featuring three unicorn heads, which are in some of our local churches.

The idea that the unicorn was brave, chaste and could protect your health, made the possession of a horn a royal status symbol. Windsor Castle still has the one belonging to Elizabeth I. Belief in the medical benefits did not begin to wane until the mid 18<sup>th</sup> Century, perhaps due to the proliferation of fakes (narwhal teeth).

Chloe concluded with the thought that maybe the unicorn did once exist, as it has been such a universal icon.

Visitors and new members are welcome to our meetings.

Pat Faircloth,  
Programme Secretary,  
893928

**Little Hands Nursery School - Linton & Bartlow**  
Three Hills Farm, Bartlow

A private Nursery School specialising in quality preschool care and education for the under fives

High staff to child ratio, individual child centred planning & learning  
Flexible booking system for the 08.00am - 6.00pm nursery day  
Optional holiday clubs available, dedicated baby room for the under twos  
We accept nursery funding giving 15 hours per week of free funded nursery for all 3 and 4 year olds and eligible 2 year olds

For further details contact Mandy Norris, nursery manager 01223 897945  
E-mail: [h-bartlow@btconnect.com](mailto:h-bartlow@btconnect.com)

Little Hands is also at Bourn, Melbourn and Newton  
visit the website at [www.littlehands.co.uk](http://www.littlehands.co.uk)

### Acupuncture and Massage in Linton

Some of the conditions acupuncture can help ...

- sports injury and tension
- back, knee, hip, shoulder and elbow pain, rheumatism
- fertility optimisation, IVF, pregnancy and menstrual
- headache and migraine, stress
- high blood pressure and circulation conditions
- anxiety and addictions

**Peter White** MBACc, MSc, MBACc.  
**Call: 01223 891145** for an appointment or free assessment  
**Email:** [enquiries@lintonhealth.co.uk](mailto:enquiries@lintonhealth.co.uk)

## A testing time was had by all



THE Gardening Club started the New Year by trying to rouse our brains with a garden themed quiz. Rounds included anagrams of plants and tools, picture identification, placing the Gardener's World presenters in chronological order and knowledge based rounds. There was a lot of head scratching and "Oh, I know I should know that one," being muttered round the room as Jim and Helen's excellent brain teasers did just that.

Many thanks to Jim and Helen for all the hard work they put in preparing such an interesting and well balanced quiz that brought us all many a smile (or groan!) through the evening. Thanks also to Wendy for her input and for being quizmaster on the evening.

Tuesday 9<sup>th</sup> February brings Barry Kaufman-Wright to speak *In Celebration of Trees*, at a great time to consider planting one. We look forward to welcoming you to hear this excellent speaker at 7.30pm in the Village Hall.

Kirsten Newble, 892425

## St Mary's celebrates marriage and christenings

FEBRUARY can seem like a dreary month but there's plenty to celebrate. On St Valentine's Day we celebrate love.

Valentine's Day falls in National Marriage Week and at St Mary's we'd like to invite married couples to join us, as we reflect on their marriage vows, and renew them in a simple service. This will be at 6pm on Sunday 14<sup>th</sup> February and families are invited too.

After the service we'll have refreshments (including wedding cake), but we know that some couples may want to go out later that evening for a romantic time together, so that's partly why it's timed to be early in the evening.

It doesn't matter how long you've been married, or whether you were married in church or somewhere else - we believe that God cares about your marriage and we'd love to celebrate that with you.

On 5<sup>th</sup> March we invite children who've been christened during the past three years (whether at St Mary's or elsewhere) to join us in church, with their families, for a Tot's Praise service - something designed with just them in mind, with a story, some simple songs, a prayer and a chance to blow out the candles at the altar. This will be at 3pm in church followed by tea. Older brothers and sisters are very welcome too, as well as mums and dads, grandparents and godparents. Please come - we'd love to see you.

Maggie Guite, Rector

### Parish visiting

IF you, or anyone known to you, would like to see someone from St Mary's Church, please contact Rev Maggie Guite (890273) or Rev Lesley Gore (891970) and a visit will be arranged.

Lesley Gore

## Share bread in Lent

THIS year's Lent lunches are to be held between 12 noon and 2pm every Wednesday during Lent, starting on 10<sup>th</sup> February. It is an opportunity to meet new friends and have a leisurely lunch of soup, bread and cheese. There is no charge but donations are taken for charity. This year we are collecting for The British Red Cross - Syrian Refugee relief fund.

The dates, hosts and venues are:  
February 10<sup>th</sup>, Judy Nightingale at 11 Mill Lane  
February 17<sup>th</sup>, Cynthia Paton at 3 Balsham Road  
February 24<sup>th</sup>, Gill Powell at 7 Harefield Rise  
March 2<sup>nd</sup>, Rosemary Read at 8 The Furrells  
March 9<sup>th</sup>, Leslie Gore at 38 Symonds Lane  
March 16<sup>th</sup>, Monica Clarkson at 4 Harefield Rise  
March 23<sup>rd</sup>, Colleen Lockstone at St Mary's Church Pavilion  
Derek Lockstone, 891931

**TRC**  
**ELECTRICAL**  
07534 685889

✓ FULL REWIRES

✓ SMALL WORKS

✓ LANDLORD CERTIFICATES

✓ NEW INSTALLS

✓ DATA & NETWORK

✓ COMMERCIAL

[trcelectrical@gmail.com](mailto:trcelectrical@gmail.com)

### Diary Dates

The 2016 Diary is now in the Post Office.

To avoid clashing dates village groups are asked to enter date, time and venue of events in the diary at the latest by the Linton News article deadline date, but preferably a month before.

Events can also be notified by email to [lneditor@linton.info](mailto:lneditor@linton.info) but this will not avoid clashes.

LNT

**THE LINTON NEWS** Next Publication 7<sup>th</sup> March 2016  
**DEADLINES for ADVERTS Monday 15<sup>th</sup> February**  
**NEWS ITEMS Wednesday 17<sup>th</sup> February**

---

**ITEMS FOR ADVERTISING MANAGER**  
**Limited space on waiting list for Linton businesses**  
Changes to ads can be sent to: Judith Rouse  
email: [adds@linton.info](mailto:adds@linton.info)

---

**ITEMS FOR THE EDITOR**  
**Can be put in the Linton News Box in the Post Office**  
Editor: Fran Armes email: [lneditor@linton.info](mailto:lneditor@linton.info)  
phone 891517

---

**For distribution queries contact: Kate France 891602**

## LINTON DIARY

For entry in this list, ensure that your event is written into the diary in the Post Office; failure to do so could mean non-entry to the diary here. You may also email your event details to [diary@linton.info](mailto:diary@linton.info), or use the form on [www.linton.info](http://www.linton.info). Call 971797 for an audio version of the Linton News.

Details of items in bold type may be found in this edition.

<b>WEEKLY</b>	
Seedlings alternate Mondays 1.15-2.45pm	CC
Chestnutbaby/toddlergroup, 9.30-11.30am Mondays	term time CC
Linton Granta football bingo, 7pm Mondays	Pavilion
Men's keep fit, 8-9pm Mondays	LVC sports centre
Linton theatre workshop, Mondays (call Joe 01440 703701)	
WEA, Tuesdays, 10am term-time	VH
Linton Air Cadets Mon and Thurs 7-9.30pm (07717801056)	LVC
Scrabble Club, 10am-12noon alternate Tuesdays	CP
Linton Granta playgrp, 9am-12noon Monday-Friday	LVC
Linton Granta Toddler grp, 9.30-11.30 Tuesdays	term time LVC
Linton Granta playgrp, 12.30-2.30pm Mon-Fri, NOT Tues	LVC
Storytime, 2-2.30pm Tuesdays, term-time	Library
Granta Bridge club, 2pm Tuesdays	VH
Granta duplicate bridge club, 2-4pm Tuesdays	VH
IT club-computer help, 7pm Tuesdays	CC
Linton chess club, 7.30pm Tuesdays (893509)	CC
Bellplate ringing, Tuesdays, 7.45pm	Hall URC
Tots in tow, 10-11.30am Wednesdays term time only	VH
Jelly Beans playgroup, 9-11.30am Thursdays	URC
New Beginnings (with Baby Sensory), 1.15-2.45pm, Thursdays	CC
Computer buddies, 2-4pm, Thursdays	Library
Cricket club, 6-8pm Thursdays	RG, LVC
Carpet bowls, 7.30pm Thursdays	VH
Parents, carers and tots Mocha house, 9.15-10am Fridays	CP
Stay and Play, Fridays 10am - 11.30am	CC
St Mary's church choir, 7-8.30pm Fridays	St Mary's
Bridge club, 7pm Fridays	CC
<i>For sports centre courses please call LVC sports centre on 890248</i>	

<b>FEBRUARY 2016</b>	
1 Camera Club, 7.15pm	CC
<b>2 WI, 7.30pm</b>	<b>VH</b>
3 Reading Group, 8pm	VH(upstairs)
4 Linton Lunch Club, 12/12.30	Red Lion, Horseheath
<b>5 Poetry and music, 7.30pm</b>	<b>St Mary's</b>
6 Farmers' market, 9am	LVC
<b>6 Linton Music Society concert, 7.30pm</b>	<b>LVC</b>
8 Whist drive, 7.30pm	VH
9 VIP group, 2pm	Chalklands
<b>9 Gardening club, 7.30pm</b>	<b>VH</b>
10 Community navigator 10-12noon	HC
<b>10<sup>th</sup>, 17<sup>th</sup>, 24<sup>th</sup> Lent Lunches, 12noon -2pm</b>	<b>See article on left</b>
<b>11 ACE's Fish and Chip lunch, 12.30pm</b>	<b>Sports Pavilion</b>
14 Lighthouse, 10.15am	URC
<b>14 Renewal of vows, 6pm</b>	<b>St Mary's</b>
<b>16 Historical Society, 7.30pm</b>	<b>VH</b>
<b>17 Cambridge hearing help, 9.30-12</b>	<b>HC</b>
18 Parish Council Meeting, 7.30pm	CC
19 Daylight readers, 10.30am	Library
21 Walking group, 11am	Church Lane
21 Messy Church, 2.30pm	St Mary's
22 Café service, 10.15am for 10.30am	URC
27 Nostalgia film night, 7.30pm	St Mary's
<b>MARCH 2016</b>	
<b>2 WI, 7.30pm</b>	<b>VH</b>
2 Reading Group, 8pm	VH(upstairs)
3 Linton Lunch Club, 12/12.30	Red Lion, Horseheath
5 Farmers' market, 9am	LVC
7 Camera club, 7.15pm	CC

KEY: CC Cathodeon centre, CP church pavilion, D&D Dog and Duck, HC health centre, LH Linton Heights school, LIS Linton Infant school, LVC Linton village college, RG recreation ground, URC United Reform church, VH village hall.

**Library times:** Mon closed; Tue 10am-5pm; Wed 4pm-7pm; Thurs 2pm-5pm; Fri 10am-5pm; Sat 10am-1pm.  
**Linton refuse collection:** 1<sup>st</sup>, 15<sup>th</sup> and 29<sup>th</sup> February,  
**Linton blue bin collection:** 8<sup>th</sup> and 22<sup>nd</sup> February  
**Linton green bin collection:** 8<sup>th</sup> February

## PLUMBLINE

### PLUMBING AND HEATING ENGINEER

PROFESSIONAL DOMESTIC PLUMBING SERVICE

Including Property Maintenance  
Painting: Tiling: Plastering: Carpentry

**Call John on**  
**01223 893903**

[Supcik@talktalk.net](mailto:Supcik@talktalk.net)  
Fully Qualified and Insured

Friendly and Reliable Service No Job Too Small

## A & R

### PLASTERING

All aspects of plastering undertaken:

- Plasterboarding
- Rendering
- No job too small
- 30+ years experience
- Free estimates

Tel: 01223890228  
Mobile: 0774 8627920

**LONG & SHORT STAY**  
**ACCOMMODATION**

*COTTAGE &*  
**CONVERTED BARN**

**HOLIDAYS, WEEKENDS**  
**BED & BREAKFAST**

**WEST WRATTING**  
**CAMBRIDGE, CB21 5LU**

T: 01223 290492  
[www.bakerycottage.co.uk](http://www.bakerycottage.co.uk)



## Success for CFRS recruitment drive

THINK the fire service is all about putting out fires and rescuing people from road crashes? Think again.

At Cambridge Fire and Rescue Service, the men and women on our frontline deliver important fire safety advice to dozens of different communities. From visiting schools to care homes, mother and toddler groups to community fetes. Our firefighters play an integral role in keeping your community safe – and we'd like you to think about joining us.

The role of a firefighter is varied and exciting but most importantly it can make a real difference to people's lives.

In December, 21 new recruits began their operational careers with the service following an intensive 11 week training course in Cardiff, delivered by South Wales Fire and Rescue Service. Five of these recruits were women.



Five young women starting their new careers

Deputy Chief Fire Officer Chris Strickland said: "We are excited to welcome this large group of new firefighters to CFRS to begin what is hopefully a great career with the fire service."

There are many challenges that a firefighter in a modern fire and rescue service must face. As well as the physical challenges at operational incidents, they must also work closely and engage with the communities to pass on potentially life-saving advice.

The next recruitment process for wholetime firefighters opens on 6<sup>th</sup> February. To find out more, log on to [www.cambsfire.gov.uk](http://www.cambsfire.gov.uk). Find us on Twitter, Facebook and Instagram

Leanne Ehren, Media and Communication Officer



CFRS' new recruits on parade

Pictures from CFRS

## Progress on Linton Health Centre merger

JUST a couple of months now until Linton and Sawston merge to form one large partnership to be known as Granta Medical Practices.

It has been an incredibly busy year and there has certainly been no winding down into retirement for me. I set my retirement date as March 2016 back in January last year, and this last year has simply flown by. The merger work has certainly ensured that I have been kept busy right to the end.

Granta Medical Practices will move forward with a new management structure. Gerard Newnham, the current Business Practice Manager at Sawston, will be the senior manager across both sites providing strategic direction and overview for the newly formed partnership.

IT Manager Haley Suttle is already in post, working across both sites. Haley has years of experience in general practice IT systems and her knowledge and skills will be invaluable

as we merge our computer systems in mid-April.

Instead of a Practice Manager at Linton we would like to welcome Tracy Ho, who has been appointed as Practice Operations Manager with responsibility for HR and Finance across both sites. Tracy will join us on 1<sup>st</sup> March and will be ably supported by Carol Thexton, our Office Manager, and the rest of the practice team.

This is an exciting new chapter in the history of both Sawston and Linton Practices. As a merged practice, we feel that we will be well prepared to take on the challenges and the opportunities that the NHS environment will present us with over the next few years.

More details next month on how we will manage the booking of appointments in April, when we have to prepare for merging the two computer systems.

Sheila Griffiths, Practice Manager and Partner

## Come join the ATC anniversary celebrations

THE 2523 Linton Air Training Corps would like to invite Linton residents to join them at their Ceilidh to celebrate the Squadron's 40<sup>th</sup> Anniversary. We hope the event will be a fun celebration for all, including cadets and their families and local supporters of the Air Training Corps.

The Ceilidh will be held from 7 to 11pm on Saturday 20<sup>th</sup> February at Linton Village College. Music and dancing will be provided by the Great Eastern Ceilidh Company and a fish and chip supper is included. Tickets cost £14 for an individual ticket or £44 for two adults and two children. Please bring your own drinks.

The Air Training Corps is a charity and any profit made from the event will be put towards purchasing equipment for future squadron activities. For more information and to download a booking form please visit our website [www.2523lintonatc.co.uk/news/](http://www.2523lintonatc.co.uk/news/) or email [oc.2523@btinternet.com](mailto:oc.2523@btinternet.com)

Lucy Tennison, 01799 530542

## PLODDING ALONG

### An update on police matters

SOMETIME between 7pm on December 22<sup>nd</sup> and 1pm on December 24<sup>th</sup> a gift bag with money was stolen from inside a flat in Nichols Court.

At approximately 5pm on Thursday 7<sup>th</sup> January someone entered a retail store in Linton, picked up a basket, selected items and placed them in the basket. They then left the store with the basket, making no attempt to pay.

If you have any information on either of these crimes, then please call 101 or alternatively you can call crime stoppers anonymously on 0800 555 111. As always, please remain vigilant and report suspicious behaviour to the police on 101, or 999 if something is happening there and then.

If you had any nice gadgets for Christmas, it is a good idea to make sure you record the serial numbers just in case you lose them or they are stolen from you. You can register them on *Im-mobilise* for free.

Do you feel safe from burglaries? The *Bad-wolf test* has been launched – it is an online quiz that takes two minutes to complete. The aim is for members of public to see how safe their home is from burglars. A score of brick, twigs or straw is given. Anyone who has the straw rating, given an email contact address and encouraged to get in contact with us so that we can do a full home security survey.

Please use the eCops link to do the test: <http://tinyurl.com/bad-wolf-test>

PCSO's Gary Kendall, Julie Hajredini and Alice Tasker

**GLENWOOD BOLTS & SCREWS LTD**  
[www.glenwoodbolts.co.uk](http://www.glenwoodbolts.co.uk)

SUPPLIERS OF QUALITY FASTENERS, FIXINGS & SILVERLINE TOOLS

Unit 2 Lintech Court  
 The Grip Industrial Estate, Linton  
 Cambridge, CB21 4XN  
 Tel: 01223 892095 / 893931  
 Fax: 01223 894122

**Emotional wellbeing issues?**  
*Effective, fast and practical help... feel better today*

Reni Landor  
 Human Givens Psychotherapist

01223 891331  
 07961 969250  
 email: [reni2@btopenworld.com](mailto:reni2@btopenworld.com)  
[www.lintonhtherapy.co.uk](http://www.lintonhtherapy.co.uk)

**A TOUCH OF NAILS**  
 GELISH MANICURES & PEDICURES  
 PERFORMS LIKE A GEL APPLIES LIKE A POLISH

Call Michelle on  
**07866 017 801**  
[supcik@talktalk.net](http://supcik@talktalk.net)  
 HORSEHEATH

**WATERCOLOUR PAINTING**  
 Explore the magical world of watercolour painting with an experienced artist, in the comfort of your own home.

For details, please contact:  
 Susan Mackenzie (01223) 891521 or:  
[sjhmack2@yahoo.co.uk](mailto:sjhmack2@yahoo.co.uk)

**New Outlet Showroom Now Open**

**ONLINE LIGHTING**  
 quality products outstanding service

[onlinelighting.co.uk](http://onlinelighting.co.uk) 6 Lintech Court CB21 4XN 01223 897210

**Linton Complementary Health Centre**  
 2b Bartlow Road, Linton

- Acupuncture, Peter White; MSc, MBAC
- Massage, Peter White; MSc, Dip. Massage
- Shiatsu, Cindy Faulkner; BA, MRSS
- Chiropody, Sharon Bennett; M.Inst.Ch.P
- Counselling, Debbie Soar; NNEB, Dip.Couns

Telephone: 01223 891145  
 Web Site: [www.lintonhealth.co.uk](http://www.lintonhealth.co.uk)

**Su Matthews**

**BODY DESIGN PILATES**

Back 4 Good Practitioner  
 Level 4 Advanced Pilates Teacher  
 Back Care Professional

W: [www.bodydesignpilates.co.uk](http://www.bodydesignpilates.co.uk)  
 E: [bodydesignpilates@hotmail.com](mailto:bodydesignpilates@hotmail.com)  
 M: 07986 692334

**The Dog & Duck**  
 63 High Street, Linton  
 Tel: 01223 890349  
 Pub & Restaurant  
 Open All Day, Every Day

Idyllic Riverside Thatched Pub and Restaurant.  
 Hearty Home-Made Pub Food.  
 Be Assured a Fantastic Welcome and a Perfect Pint!!  
**Live Jazz - 1<sup>st</sup> Sunday of every month 3pm-5:30pm**  
 Fish and Chips Special on Wednesday £5.95  
 Sunday Roast  
[www.facebook.com/thedogandducklinton](http://www.facebook.com/thedogandducklinton)

**McKenzie & Haywards Garage LTD**

**MOT by appointment while you wait**  
**Servicing, Collection & Delivery Service**

Unit 3 & 4, Lintech Court  
 The Grip Industrial Estate  
 Linton, Cambs  
 CB21 4XN

Tel : 01223 894140  
 Fax : 01223 890035  
[mhgarage@btconnect.com](mailto:mhgarage@btconnect.com)

**Cambridgeshire Family Chiropractic Centre**

Family-centred care in Linton for aches and pains as a result of:  
 Pregnancy  
 Poor Sleep  
 Work Stress  
 Call 07870568548  
[www.abundanthealthcare.co.uk](http://www.abundanthealthcare.co.uk)

**PSH Electrical Services**  
 Rewires, New builds, Extra lights, Extra sockets, Repair works, Garden lighting, Showers  
 Registered NIC EIC domestic installer  
 email [pshelectrical27@gmail.com](mailto:pshelectrical27@gmail.com)  
 telephone 07867980738

**CHRISTOPHER MARKHAM HOME & GARDEN SERVICES**

Interior/Exterior Decorating  
 Fencing, Guttering  
 Turfing, Garden Clearance  
 Lawn & Hedge Cutting  
 Decking & Patio Cleaning  
 Patios & Driveways  
 Call on  
**(01223) 892889**  
**or 07973294946**  
 No job too small...

**Fine Design ENGRAVING**  
 trophies, awards, gifts etc

We can supply metal sports trophies.

01223 893514  
[fine.design@btinternet.com](mailto:fine.design@btinternet.com)  
[www.finedesignengraving.co.uk](http://www.finedesignengraving.co.uk)  
 visitors by appointment  
 Maureen Williams 53 Chalklands, Linton

A large range of glassware kept in stock.

**Singing Lessons**  
**Sarah Rosewell BA (Hons) Music**

Individual singing lessons available for all ages and abilities  
 Whether towards exams or purely for pleasure  
 \* CRB Checked  
 \* Based in Linton  
 For more information contact:  
**Sarah on 01223 894861**  
 Email: [sarahrosewell@hotmail.com](mailto:sarahrosewell@hotmail.com)

Made to Measure  
**CAPRI BLINDS**

\* Verticals \* Roman \* Roller \* Pleated  
 \* Venetian \* Wooden  
**CALL NOW FOR**  
 free quotation - free measuring - free fitting  
**Vertical Blinds now available with wand operation.**  
 No Cords  
**Ideal for Child Safety**  
**Tel: 01223 894020**  
[www.capriblinds.co.uk](http://www.capriblinds.co.uk)



## LINTON COUNTRY MATTERS

Text by Frances Armes illustrated by Maureen Williams



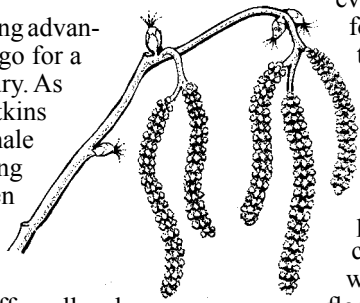
### Hazel or *Corylus avellana*

I HAVE noticed that this year signs of spring are coming early. Even before Christmas daffodils and snowdrops had appeared in sheltered spots in gardens, masses of aconites carpeted lawns under the trees and some trees blossomed.

In early January my husband and I were taking advantage of a sunny spell between the showers to go for a walk on the Gog Magog downs and Wandlebury. As we walked our spirits lifted as we saw many catkins on the hazel trees, which have both male and female flowers. The male flowers or catkins are the long golden ones that flutter and shake off their pollen in the breeze when fully developed.

The female flowers are often overlooked as they are small and look like buds with red tufts. Catkins begin to form in the autumn starting off small and grey in colour and are usually only fully mature by late January or early February.

However, this year and last year they have been early because of the mild winters. Catkins bloom early in the season before most other trees have leaves, which would hinder the scattering of their pollen by the wind.



We also noticed that many of the hazel trees had been coppiced, that is they had been cut down to the base in previous years and then allowed to grow branches or poles, which could be harvested every three to four years. Coppiced hazel trees can live for hundreds of years and are a renewable source of timber. Trees not coppiced can grow to 12 metres but will only live for about 80 years.

The poles from the coppiced trees were used in the past for hedges, wattle and timber walls and for the production of charcoal.

Today they are used for making pea sticks, bean poles and charcoal for the barbeque. In addition, coppice woodlands are used in the conservation of woodland habitats, as newly cleared coppices are flooded with light, creating flushes of sun-loving woodland flowers where insects such as moths and fritillaries feed on the leaves. The dense coppice regrowth is an ideal nesting habitat for many bird species and a place where dormice thrive.

Wandlebury has a conservation volunteer activity on coppice products 11am to 3.30pm on Saturday 13<sup>th</sup> February and again on Saturday 27<sup>th</sup> February. See [www.cambridgeppf.org/whats-on](http://www.cambridgeppf.org/whats-on)

### New Year's bells ring out



The bellringers with their captain

Picture by Wendy Foster

ON New Year's Eve I was invited to a party at the church pavilion, which was organised by Sue Ellis and Pam Richardson plus their family members.

The included a bring and share supper, which was absolutely delicious, a quiz, a quick draw game which caused lots of laughter and a card game called Chase the Ace which brought us up to a little before midnight. At this point the bell ringers at the party let to ring in the New Year on the church bells. A beautiful sound and a great end to a superb social evening.

If I am able to next year I shall definitely go and would encourage friends to do likewise.

My thanks go to Sue and Pam for all their work in making the evening so enjoyable and to the bell ringers, shown in the picture who are the church ringers and some friends led by Jackie Latham.

Wendy Foster

### Malcolm Guite entertains with poetry and music

COME and join the Friends of St Mary's for a concert with a difference, at 7.30pm on Friday 5<sup>th</sup> February in the Parish Church.

We present Malcolm Guite, a well-known published poet, singer and songwriter, who is a very entertaining speaker.

Some of his books and CDs will be available to buy.

Tickets at £10, to include light refreshments, are available after services in church, from Judy Nightingale 891806, Chris Morse 891616 and Hugh Paton 890362, or for £12 at the door. Everyone welcome.

Margaret Cox, 891231

### All for Independent Age

GETTING old can bring challenges, challenges that we will all have to face at some time. Fortunately, some of these concerns can be easily solved but as a nation we are yet to fully appreciate and provide for the needs of an aging population. I want myself and my loved ones to grow old with dignity, care and love and I hope for the same for others.

For this reason, this year I am running the London marathon on 24<sup>th</sup> April for the charity Independent Age. This will be the first time I have run the London marathon and I hope to complete the race in three hours 30 minutes – not bad for someone with short legs.

I am exploring multiple ways to raise funds for Independent Age. In particular I am keen to give talks about my experience and to act as a training partner for anyone else who would like to get fit (I used to be a gym instructor many years ago).

In my day job, I lecture in African Studies at University College, London and undertake research into African anthropology and archaeology. I would be keen to talk about the marathon or about my experiences in Africa or archaeology to any schools, clubs or groups who might be interested.

If you would like to find out more about my fundraising or to make a donation you can go to my Just Giving Page [www.justgiving.com/md564564/](http://www.justgiving.com/md564564/), or send me an email at [matt.davies@ucl.ac.uk](mailto:matt.davies@ucl.ac.uk).

Dr Matthew Davies, 07547 962415



Cambridge Triathlon, Ely

Photo supplied by Matthew

Carpentry, Plumbing, Tiling Door/Window Replacement Kitchen/Bathroom Refitting	Fencing & Decking Painting/Decorating Flat Pack assembly
<b>Property Maintenance</b>	
<b>Steve Jackson</b>	
<a href="mailto:stevejacksonltd@hotmail.co.uk">stevejacksonltd@hotmail.co.uk</a>	
Aerial Upgrades & installations Satellite dishes installed	Steve Jackson Office 01223 893896 Mobile 07963 854653

## ProClean

*'Your Complete Cleaning Solution'*

- \*Carpet Cleaning \*Rugs \*Stain Removal
- \*Car Valeting \*Caravans \*Motor Homes
- \*Upholstery Cleaning \*Stain Protection
- \*Floor Cleaning / Scrubbing / Sealing / Polishing
- \*Pressure Washing of Patios Paths & Driveways
- \*Domestic Cleaning \* Top Ups & One Off Cleaning
- \*Gutter / Fascia Cleaning

\*Contract Office Cleaning (Flexible Options)

**TEL: 890433 Mob: 0777 375 8355**  
74 Bartlow Rd, Linton, Cambridge, CB21 4LY

## TIM PHILLIPS & Co.

### Accountants

Established 1991

Independent, specialist service for:

**Small Business • Self Assessment  
Personal Taxation**

Free initial consultation – no obligation  
**EASY, FREE PARKING**

Copley Hill Business Park, Cambridge Rd., Babraham  
Off A1307 between Wandlebury and Babraham  
**Tel: 01223 830044. [www.tpaccounts.co.uk](http://www.tpaccounts.co.uk)**

## MALLYON & DONALDSON

### Linton

*Specialising in both Modern and  
Traditional building methods.*

**Tel: 01223 891267  
Mob: 07941 220868**

**All contracts finished to a high standard.  
Reliable service. Local references available.**

## LINTON PAVING COMPANY

YOUR LOCAL LANDSCAPING  
BLOCK PAVING & PATIO  
SPECIALIST.  
**PROPERTY MAINTENANCE**  
Int/Ext Painting, General Repairs  
FRIENDLY SERVICE.  
FREE QUOTATIONS  
Tel: Andre Jacobs

**01223 890060  
07765 594398**

## Barn Owl Accommodation

Three private  
self-contained  
annexes all in Linton

[www.barnowlaccommodation.co.uk](http://www.barnowlaccommodation.co.uk)  
Call Michelle on 07584 430051

## POT POURRI 131

**A Quadratic equation solution**  
The standard quadratic equation ( $ax^2 + bx + c$ ) has solutions  $m$  and  $n$ .  
What is  $1/m^2 + 1/n^2$ ? (In terms of  $a, b, c$ ).

**Solution to 130 – The Height of the Teabag Volume**  
The height of the tetrahedron bag is 4.90cm. When half full, the height is 1.01cm from the base.

Urania

### Hildersham News

*IT'S Teatime* will be held at 3pm on Thursday February 4<sup>th</sup> in Hildersham Village Hall with the Fairtrade Stall selling all you need for a Fairtrade Breakfast: muesli, honey, bananas, coffee, tea, hot chocolate, sugar ...

If you would like to know more please contact Cathy Myer on 892848 or email [catherinemyer43@btinternet.com](mailto:catherinemyer43@btinternet.com)

### Hearing Help demonstrations

CAMBRIDGESHIRE Hearing Help, the local charity that helps those living with hearing loss with free advice to help you hear, will be available from 10am to 12noon on Friday 11<sup>th</sup> March at Scotsdales Garden Centre, 120 Cambridge Road, Great Shelford CB22 5JT.

Come and discuss your hearing difficulties with those who understand the problem.

We will demonstrate equipment to help you hear better, whether or not you wear a hearing aid, to help with telephones, television, radio alarms, door bells and personal listeners.

More information about Cambridgeshire Hearing Help can be found on our website:  
[www.cambridgeshirehearinghelp.org.uk](http://www.cambridgeshirehearinghelp.org.uk)

Or contact us at 8A Romsey Terrace, Cambridge CB1 3NH or on 416141

Frances Dewhurst, Director

### Join the Men's get fit club

IF you're struggling to keep fit or get fit in the New Year, why not join the Men's Monday Keep Fit Club? It's for 30s-60s who are either unfit and want to get fit, or are moderately fit and want to stay that way. It's all about doing what you feel is within your own capabilities at your own pace, with an emphasis on mutual encouragement.

We spend half an hour from 8pm using the equipment in the Linton Village College Fitness Centre, followed by 30 minutes of circuit training and 30 minutes of team sport, usually basket ball, in the gym. For more information phone John (891952) or Bob (891372).

Andrew Gore

## KJL Roofing

All roofing repairs, lead-work, renewal of pitched or flat roofs

New guttering, repairs/unblocking

Free estimates before any work commenced

25 years + Experience

**Tel: 01223 892542  
Mob: 07958 618440**

### BED & BREAKFAST

**Mrs Monica Clarkson**  
4 Harefield Rise, Linton  
**Tel: 01223 892988**  
Quiet modern bungalow  
Families welcome  
No Smoking

---

### Springfield House B&B

14/16 Horn Lane, Linton  
River views from bedrooms & guest lounge  
**Tel: 01223 891383**  
[www.springfieldhouseinton.com](http://www.springfieldhouseinton.com)

## Small Gifts

Watch batteries and straps fitted while you wait.  
Jewellery repairs including sizing and polishing.

All repair work carried out on the premises by a professional with 40 years experience.

We stock a selection of:  
Silver Jewellery • Photo Frames •  
Collectables • Toiletries •  
Greeting Cards • Gift Wrap

61 HIGH STREET, LINTON, CAMBRIDGE, CB21 4HS  
TEL: 01223 894225

Across the globe, the Kumon Maths and English Programmes advance students beyond their school level.

Contact your local Instructor for a free assessment.

**Linton Study Centre**  
Karen Tumber **01223 893578**

**KUMON** kumon.co.uk





# The Marsh mail



THURSDAY 9<sup>th</sup> February marks Safer Internet Day 2016 – a date specifically calendared to promote safe, responsible and positive use of digital technology by children and young people.

Highlighting and teaching e-safety practice is an important part of safeguarding at Linton Village College.

Two Cs that I have been discussing with students at the start of this year are Connection and Consumption. I also want to address the impact that access to digital technologies may have on students' lifestyle and wellbeing.

The Connected Kids report claimed that children aged five to sixteen in the UK are spending, on average, six and a half hours a day using a screen; this increases to seven to eight hours for teenagers, including multi-screening.

The NSPCC has recently warned of the creation of a nation of deeply unhappy children due to the pressure to keep up with friends and have the perfect life online. Studies have also made links between excessive screen time and gaming and underachievement in GCSE examinations.

Meanwhile the charity Action for Children has claimed that one in four parents struggles to control their children's screen time and the Department for Education has commissioned an advisory group to create recommendations to prevent phone and mobile devices disrupting learning in schools.

While the school plays a crucial role in educating students about safe and responsible use of digital technologies, it is parents, friends and the wider community that will shape their attitudes and habits. How long children spend plugged into devices, staring at screens, engaging in virtual conversations and investing in their online presence is only partly influenced by the rules and usage that we permit and promote at school.

As adults, our role is not to shun, ban or demonise digital technologies for the negative impact that they can facilitate; we need to help the next generations to be responsible and safe users, to create moderate and healthy consumption and to help them to connect, virtually and physically, with the world around them.

Helena Marsh  
Principal

## PLANNING APPLICATIONS

S/2799/15/DC, Julie Barnes, **Bull House, 40 High Street.** Discharge of Conditions 3 (Materials) and 4 (railing details of Planning Consent S/2612/12/FL and Condition 3 (specification and schedule of works), 6 (window and door detail), 8 (materials) and 10 (roof glazing, solar panels, soil vent pipes and mechanical extraction details) of Listed Building Consent S/2612/13LB.

S/2896/15/FL, Mr and Mrs A Bowie, **9 Meadow Lane,** Extension to existing glazed link and the insertion of 7 No roof lights to North-West facing roof slope

S/2918/15/FL, Chris Tyler-Smith and Xue Yali, **14 High Street** Single Storey Extension

S/2920/15/LB, Chris Tyler-Smith and Xue Yali, **14 High Street** Single Storey Extension

S/3055/15/FL, Mr A F Weaver, **Land between 12 and 14 Joiners Road.** Erection of pair of Three Bedroom semi-detached dwellings.

S/3058/15/DC, Mr A F Weaver, **12 and 14 Joiners Road.** Discharge of Conditions 3 (Materials), 4 (Hard & Soft landscaping), 6 (Boundary Treatment), 7 (Foul Drainage), 8 (Surface Water Drainage) and 11 (Contractors Arrangements) for Application S/1803/14/FL.

**Linton Cabs TAXI**

**Pre-book only Linton based taxi service**

**Airports - Train Stations - Local Travel**

---

Tel: 07958 657300 / 01223 890965  
Email: lintoncabs@btinternet.com

*The Crown Inn, Linton*  
*presents*

Monday Fish & Chips £5.95  
Tuesday Rump Steak £8.95  
Wednesday Free Dessert with Main Meal  
Thursday 10% discount on Pizza  
Friday Gourmet Burgers

Every Weekday Lunch Time Free Dessert with Main  
5:30-6:30 Happy Hour Monday-Friday

www.crownatinton.co.uk  
11, High Street, Linton, Cambs Tel 01223 891759



## The Way We Were for Garth Collard

### A pictorial history of flooding in Linton

WE are sorry to report that Garth is ill in hospital having suffered a fall and a broken hip with complications. We wish him a speedy recovery. We badly miss his article but in the meantime, because it is topical locally and nationally, we have raided his and others' pictures of floods in Linton in the past decades to make up this collage of flood pictures. You will notice that the High street, Church Street and the Dog and Duck feature large in the pictures.

One of our team remembers the 2001 floods as follows:

"By lunchtime on Sunday 21<sup>st</sup> October, the river in the village had reached a worrying level. Word soon spread that a potential problem was going to overwhelm the village. Little did they guess that by 2pm the water level in the centre of the village would be about two feet. By 3pm the river had burst its banks all through the village. Many areas and properties were flooded and the water kept on rising. By now it was three feet deep and causing major problems. Houses around the mill were flooded, it was impossible to get through the village. The cottages along Meadow Lane, some of the houses at the Mill and those around the church were all under water. The Dog and Duck opened its windows so the water could drain straight through the building. Hillway became a river as water cascaded from the top adding to that already sitting in the centre of the village. The shops and properties along the High Street were flooded and the water reached up the street as far as Paintins, the funeral directors. Sand bags were in use but the level of water was so great that these made little difference.

The river itself carried small trees, bits of garden rubbish and, at one point, a wooden bridge was seen floating away. There was oil, rubbish and garden furniture carried along by the raging torrents. Many people lost items from their homes, businesses lost stock which they hadn't managed to move and at one point someone's freezer finished up on the recreation ground. By late afternoon the river had reached about three and a half feet and seemed to peak there. The emergency services provided a dinghy to rescue people from their homes.

The biggest surprise was that by 5am on the Monday morning there was no sign of the water. All that was left was a great deal of silt and rubbish. The big clean up then began."

Many other residents must have flood tales to tell – let us know if you have.

It can take five months or more to get back in to a dwelling after flooding and insurance premiums go up. So that is why the Parish Council is working hard to get the South Cambridge District Council to help with flood defences (see page 1).

We are also concerned that the new buildings planned for the lower side of Bartlow Road may be subject to flooding, especially as the houses planned for the opposite side of Bartlow Road could add to the flooding problem by increasing the run-off down to the river.



1947 floods outside the Dog a Duck



June 1958 floods in the High street, a policeman stands on a box to direct traffic.



1958 floods in the High Street and Meadow Lane



1968 floods in the Grip



1968 wide view floods by The Swan when it was still a public house.



1969 Meadow Lane  
All the above pictures and the 2001 pictures to the right are from Garth's collection



2016 the Dog and Duck and the Recreation Ground

The two pictures above are by Simon Hill



2014 The Recreation Ground and Pocket Park

Three pictures above supplied by Mike Judge, David Chapman and Brian Manley



2009 The Mill  
Photo from Garth's collection



2001 Firemen in Meadow Lane

2001 High Street  
Taken by Julian

2001 Firemen in front of Dog & Duck, High Street



2001 Church Lane

**PH PLUMBING LTD**  
ALL PLUMBING, HEATING & INSTALLATIONS UNDERTAKEN  
Unvented Hot Water Systems

**Paul Hulbert**  
**07960 059 209**

Office: 01223 956 262

Cambridge House,  
19 High Street  
Linton,  
CB21 4HS  
email: pkhulbert@hotmail.co.uk

**L.B. CABS LINTON**

**For all your travel needs**  
**Call Lionel**

Tel: **01223 892986**  
Mob: **0771 2420675**

**Discreet Pest Prevention & Control**

**A J PEST CONTROL**  
FAST AND EFFECTIVE  
PROFESSIONAL SERVICES  
COMMERCIAL - DOMESTIC - AGRICULTURAL

© Wasps, Hornets & Flies  
© Mice and Rats  
© Fleas, Bed Bugs and Ants

© Bird Control  
© Squirrels and Rabbits  
© Cockroaches

Based in Linton  
Contact: 01223 914004 or 07855 478824  
www.ajpestcontrol.co.uk





# Parish Council Matters Recreation ground

Parish Council Matters is written, edited and published by the Parish Council with the support of the Linton News Team.

IN the last issue of Parish Council Matters in the Linton News we asked for volunteers to join a working group to look at the future of the recreation ground. It is a bit early yet as this article has to be prepared in early January but at the time of writing, a couple of people have come forward showing an interest in being part of a working group. The recreation ground is a great asset to the village, but is very much underused. How can we increase the usage and participation and improve the visual impact of the area?

Among the suggestions that have been aired are improve and replace the old unsightly gates at the entrance on Meadow Lane and provide car parking for approximately 24 cars when a function or activity is in progress on the meadow or in the clubhouse. This may also help in reducing the parking problems on the High Street if it was feasible to keep it open during daylight hours. The surface would not be a concrete base but a hard surface set into the grass, so the appearance would not be too offensive. The footpath is due to be resurfaced and a review of the restrictions would be carried out. The flood works on the river bank and the clearing the northeast corner has been well received and we would look to enhance this area with picnic tables and benches.

The unsightly containers near the path to the village college will be removed and some planting of trees and shrubs made to generally tidy up the entrance, with possibly some seating too. The bowling green has proved to be a bit of a white elephant with very little activity on the site. The main problem is the surface. It is very time consuming and expensive to maintain, and is not acceptable for using in any of the local bowls leagues, hence the attempts by the bowling club to attract new members has proved fruitless. This area could be converted for use as a Multi-Use Games Area (MUGA) which would enable a junior 7v7 or 9v9 football facility which is very much in demand by the Aztecs Junior Football Club. Included in the area also could be a trim trail, exercise equipment, putting green, and any other suggestions brought forward would be discussed and considered by the working group.

The tarmac area again is a wasted area and could be used for a number of activities, including a BMX track, and extension to the skate park. Again it would be a great help if the younger members

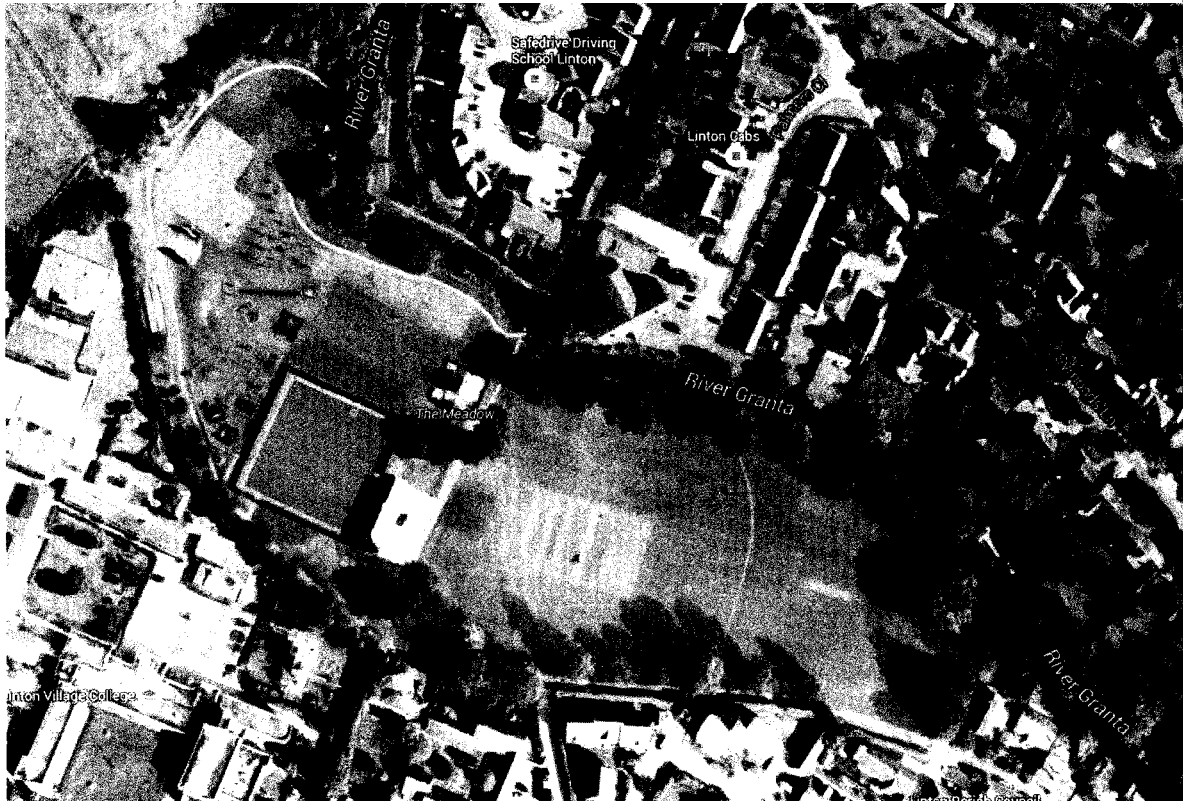
of the village could contribute their thoughts and requirements as they did towards the skateboard facility which was greatly appreciated by the parish council.

I am sure there are many other ideas and it would be the aim of the group to produce a plan for the whole area and work to an agreed programme to get the best use for the village from this facility. The village is desperately short of recreational areas and it is unlikely in the current climate that more land will become available in the foreseeable future, so we have to make the best

of what we have got. Some funding is available and once we have an agreed plan we can apply for funding from other organisations. Your thoughts and ideas would be most welcome and I can assure you all suggestions and opinions will be given every consideration. Please contact Marilyn or Anne in the office or ideally send an email to [lintonpc@btconnect.com](mailto:lintonpc@btconnect.com) with your thoughts which can then be considered by the group, and of course if you wish to join the group you will be most welcome.

Cllr Brian Manley

**Aerial view of the recreation ground (not showing the most recent pavilion extensions though). Your thoughts and suggestions to improve on all facilities are awaited by the parish council**



Aerial picture taken from Google Maps

## Dry January? Not for Linton ...

We might be encouraged to be 'dry' in January, but no one told the weather! Again, as it seems to do rather too regularly, the Granta rose around 8-10ft, flowing very rapidly with debris zipping past most alarmingly. Fortunately the bridges seem to have remained intact, but we have lost more riverbank and trees have been further undercut; their roots help stabilise the banks, without them we would expect more erosion.

On 11<sup>th</sup> January I had a red flood warning from the Environment Agency Floodline (register for these on environ-

ment-agency.gov.uk or call 0345 988 1188). At that time the river was already running around 8-10ft higher than normal, so the warning was rather late. The message was spread by an informal cascade, but perhaps this system can be revised in a more organised way?

The flooding affected the recreation ground, with the tarmac area and some play equipment swamped. The path near the Jubilee stone was submerged; the oxbow forming here is causing bank erosion, so will need work if we are not to lose the path. The east side and sports pavilion were safe; the

recent rebuilding of the banks, clearing the ditch, etc, seems to have worked.

Up stream, water from the Ford came into Mill Lane but the houses were safe. In Leadwell Meadows, the floodplain did what it should - it flooded. The recent work has improved the water holding capacity, slowing the water reaching the village. Further work is in process to clear ditches, dig out the pond and improve vegetation. It is being discussed that water could be held back here, or further upstream using bunds and leaky dams; a major project, but of help to the cen-

tre of Linton, Hildersham and onwards downstream.

Of course, any development affecting the floodplain or reducing water retention will impact on flooding. That is just one reason why Linton parish council (LPC) is opposing the Bidwells application to build 75 houses in Bartlow Road (think of the extra water flowing off the site).

So, LPC is doing its bit to help flood prevention and hope that the good work will not be undone by inappropriate development.

We are not just affected by river water - run off from Rivey

**LINTON PARISH COUNCIL**  
The Village Hall, Coles Lane, Linton, Cambridge CB21 4JS Tel: 891001  
Clerk to the council – Mrs Marilyn Strand  
Email: [lintonpc@btconnect.com](mailto:lintonpc@btconnect.com)  
Website: [www.lintoncambridgeshire-pc.gov.uk](http://www.lintoncambridgeshire-pc.gov.uk)  
Facebook: [www.facebook.com/lintonpc](http://www.facebook.com/lintonpc)  
Office open: Monday, Tuesday, Wednesday and Friday 9am – 12noon, closed on a Thursday.  
Or by appointment  
Dates for full council meetings:  
18<sup>th</sup> February and 17<sup>th</sup> March 2016  
All meetings held at the Cathodeon Centre commencing at 7.30pm

Hill affects Back Road, Chalklands, Rivey Lane, etc. LPC has redug drainage ditches along Rivey Lane, but run off water is still flowing into the ashes area of the cemetery. LPC are looking at ways of halting this, as it is distressing for relatives.

If you have ideas on flood prevention, circulating information on potential emergencies, and other ways of improving the village, let us know - local knowledge is one of the valuable resources we have.  
Cllr Enid Bald

**Linton Leisure Centre**  
~Fitness Studio ~ Badminton ~  
~Tennis ~ Cricket Nets~  
~All Weather Pitch~  
~ Group Exercise Classes ~  
Membership or Pay & Play options available  
**ZUMBA FITNESS IS HERE!**  
01223 890248  
LINTON VILLAGE COLLEGE

**LINTON VILLAGE MOTORS**  
(situated in Great Abington opposite Granta Park)  
[www.lintonvillagemotors.co.uk](http://www.lintonvillagemotors.co.uk)  
Tel: 01223 830550  
• MOT testing  
• All makes of vehicles serviced and repaired  
• Tyres at competitive prices  
• courtesy car provided  
• Polite and friendly staff  
Mon-Fri: 8.30am-5.30pm Sat: 8.30am-12.30pm

**ABRAMS HEATING**  
Professional heating & plumbing services  
• Boiler Installation, Service & Repair  
• Gas Fires, Cookers & Hobs  
• Landlord Safety Certificates  
• Quality Kitchens & Bathrooms  
• General Plumbing  
• 24hr Emergency Callout  
01223 897236 07931 685774 [www.abramsheating.co.uk](http://www.abramsheating.co.uk)

*the flower boutique*  
Treat yourself, your friends and family to the freshest seasonal flowers.  
Bespoke design service for weddings and funerals.  
41 high street . Linton . 01223 891740  
[www.theflowerboutique.co.uk](http://www.theflowerboutique.co.uk)

**STEVE WEBB**  
Painter & Decorator  
Over 30 years experience  
CITY & GUILDS CERTIFICATES  
Montford Barn  
Horseheath  
Tel: 01223 893864  
Mobile: 07772991373

**NRS CARPETS**  
HOME SELECTION  
FREE MEASURING & ESTIMATING  
All types of flooring available  
Tel: 01223 893634  
Mobile: 07885 173113

**MOPS HAIR SALON**  
HAIR BY JO DENNY  
WOMEN | MEN | CHILDREN  
CUTTING & COLOURING  
41 LINTON HIGH STREET  
(BEHIND BOSWELL'S BAKERY)  
t: 01223 893 285

**Neil Claxton**  
Painting & Decorating  
Interior/Exterior  
Rooms Emulsioned from £120  
**FREE ESTIMATES**  
Tel: 01223 893487  
Mobile: 07724073045  
e-mail: [n.claxton925@btinternet.com](mailto:n.claxton925@btinternet.com)



# Councilminutescouncilminutescouncilminutescouncilminutes

ABBREVIATED minutes of the Linton parish council (LPC/PC) meeting held at the Cathodeon Centre on Thursday 10<sup>th</sup> December 2015.

**Present:** Cllr Enid Bald (chairman); Cllr David Champion; Cllr Brian Cox (Dr); Cllr Simon Hill; Cllr Brian Manley; Cllr Merrie Mannassi; Cllr Graham Potter; Cllr Amy Smith; Cllr Alison Walker; Cllr Beatrice Ward (Dr). Clerk: Marilyn Strand and Tracy Coston. District Cllr Henry Batchelor.

**Apologies for absence:** Cllr Paul Poulter and District & County Cllr Roger Hickford.

**Councillor vacancies:** The PC now has four vacancies for councillors. Resignations had been received from Cllrs Jan Bumstead, Nicola Miller and Paul Richardson. The chairman thanked each of them for their work on the PC and said that their input would be missed.

**Councillors' declarations of interest:** Cllr Hill declared a personal interest in the update on allotments item. Cllrs Mannassi and Champion declared a personal interest in the update on village hall item.

**Chairman's comment:** The chairman had attended the Remembrance service which had gone well. The work in the cemetery has now been completed and the area is looking very good. Flood amelioration work around the village has been partially completed and with rain forecast we will be able to see how well the new measures are working.

At December's South Cambridgeshire district council (SCDC) planning committee meeting which the chairman had attended, a decision on the application at 1 Horseheath Road was deferred to the January meeting. The two larger proposals on Horseheath and Bartlow Roads will also be delayed.

**Planning matters:** Cllr Cox raised an issue with parking on Church Lane: The infant school's recent application to install a Multi-Use Games Area had meant the loss of a parking space for its staff. Because of this they are parking on Church Lane and leaving very little space for parking for relatives when funerals take place at the church. It was agreed to feed this information back to SCDC and also to write to the school to ask them to park in other areas of the lane where they wouldn't impede on churchgoers.

**Update on SCDC Scheme of Delegation:** Cllr Bald had spoken at the meeting when this was discussed and had raised the issue of the possible loss of the democratic process if PCs were no longer given the opportunity to comment on some applications. Cllr Henry Batchelor said that officers at SCDC had agreed that the right to comment on applications should not be taken away from PCs and the proposed changes to the Scheme would be reassessed in six months' time.

**Haverhill Local Plan update:** Cllr Bald reported that various action groups were developing in villages around Haverhill and along the A1307 which oppose its Local Plan, as does LPC.

**District and county councillors' reports & business:** Cllr Batchelor had sent a report and this had been circulated before the meeting and this was noted.

SCDC's Local Plan had been agreed last month and will be out for consultation in February or March 2016. It will be resubmitted with the required number of houses to fulfil housing supply criteria. The inspector has not yet confirmed whether the revised housing supply proposals would be accepted.

A review of the District Boundaries is still underway. Its main objective is to reduce the number of councillors so that each one is representing roughly the same number of constituents. The Boundary Commission has now opened the public consultation which people can make comments on until February 2016 by going to [www.lgbce.org.uk/current-reviews/eastern/cambridgeshire/south-cambridgeshire](http://www.lgbce.org.uk/current-reviews/eastern/cambridgeshire/south-cambridgeshire)

SCDC is going digital. Its forms will now be available online but a call centre is available to help those who do not have access to the internet.

**Clerk's retirement:** Mrs Susan Parry retired on grounds of ill health on 6<sup>th</sup> November 2015 after 10 years' service. A letter of appreciation will be written by Cllr Champion.

To discuss the employment of a permanent clerk: The interim clerk, Marilyn Strand, left the meeting during this item and the following minutes were taken by Tracy Coston:

Ian Dewar advised the clerk that the position of clerk does not have to be advertised so long as the clerk's work has been satisfactory during the interim post. Cllr Champion proposed that Marilyn Strand was offered the job as permanent clerk. Cllr Manley seconded the proposal. A vote took place with a result of nine for and one against. It was agreed for Tracy Coston to write a letter to Marilyn Strand offering her the position of permanent clerk.

Marilyn Strand re-joined the meeting and the chair informed her that the PC was going to write her a letter to offer her the position.

**City Deal:** Evidence case by Rail Haverhill: Presenting the case for building and reconnecting the railway from Haverhill to Cambridge. Cllr Manley proposed that the PC support the report and the proposal was seconded by Cllr Smith. Cllr Manley said that a rail link would ease commuter traffic on the A1307 but would not reduce heavy traffic like HGVs. It was agreed by all to support Cllr Manley's proposal.

**Update on the Neighbourhood Plan:** Cllr Poulter had sent a report which had been circulated before the meeting and this was noted. The NP is proceeding well and a further update will be available at the next meeting.

**Update on allotments:** Cllr Hill has stood down as the PC's representative on the Allotments Association until the new year.

The PC is currently waiting for advice from SCDC as to whether it should proceed with its Compulsory Purchase Order on land on Horseheath Road or wait for the planning application on this land to be determined. Cllr Batchelor will chase this up.

**Update on Leadwell Meadows:** AJ Prentice had given the clerk an update on work at the Meadows: Work has begun on clearing brush and self-set trees, most of which has been shredded although it will be necessary to have a fire to burn the brambles. New paths have been cut to give walkers alternatives whilst existing paths are blocked by machinery or workers, and gaps in the overgrowth down to the river have been created to make it possible for walkers to get a closer view of the river. Work will cease this week and recommence in the new year. Rob Mungovan (SCDC ecology officer) is due to visit to inspect the work so far.

**Update on the village hall:** Cllr Champion had submitted a request on behalf of the village hall committee for £6,400 to install a fire alarm system and approximately £3,000 to update doors and frames to make them compliant with current health & safety regulations. It was proposed by Cllr Walker to award a grant to the village hall committee for £9,400 to be spent before the end of February 2016 and the proposal was seconded by Cllr Cox. All agreed (two abstentions). The clerk confirmed that this could be funded by s106 money (community facilities) as agreed by the finance committee at its meeting earlier that afternoon. The clerk informed councillors that VAT would not be recoverable on the cost of this work as the building does not belong to the PC.

**Local Handyman services:** Horn Lane road repair; laurels in cemetery: It was proposed by Cllr Manley that these works should be carried out by the PC's handyman and the proposal was seconded by Cllr Smith. All agreed.

**Tree matters:** Request from Dr Cox to submit a tree works application for permission to remove lime covered by a tree preservation order in the churchyard: It was agreed to submit an application.

**Cemetery matters:** Resurfacing of the paths and roadway is now complete. The PC will consider how to landscape the old pond area and ashes area at a future meeting.

**Traffic matters:** Safety & Disability Access scheme: This will not now be funded by Cambridgeshire county council's (CCC) Local Highways Improvement Initiative and was deferred to the traffic working group to progress.

The response from CCC Highways regarding resurfacing works within the village was noted. Highways have not yet done anything to improve the poor state of Symonds Lane and Long

Lane. The traffic working group will look into this.

**Update on A1307:** Cllr Bald had sent a report which had been circulated before the meeting and this was noted. The main point of the PC's objections is that the positioning of the proposed road would ruin the Roman Road along with several villages. Whilst better routes in and out of Haverhill are needed, the problem needs to be addressed at a regional rather than local level.

**Update on Beacon Trust:** The Beacon Trust has applied to the PC for £15,000 per year for three years to fund its youth work in the village. The finance committee has included this amount in its precept proposals which full council will consider at its January meeting. It was agreed that the PC supports this work in principle, but more information is needed on exactly what the Trust will be providing and how many parishioners will benefit from it, before a final decision is made.

**Consideration of correspondence received:** Ms J Wren request to install a street light on Stantons Lane: It was agreed that the cost of installation and ongoing running and maintenance costs are prohibitive to the PC providing lighting at this location. Refer to CCC street lighting.

A Gore request from parishioner to install a memorial bench in the churchyard's garden of remembrance, obtaining a faculty for the removal of laurels and planting proposals to replace them: It was proposed by Cllr Cox to agree to the PCC obtaining a faculty for a proposed planting scheme and the placing of a memorial bench. The proposal was seconded by Cllr Walker. All agreed.

Mr & Mrs Reader request to install mirror opposite Market Lane to improve sight lines when exiting the lane: It is recommended by both the police and CCC Highways that mirrors of this kind should not be installed on the highway. Therefore the PC is unable to grant this request.

Ms M Rhodes request to concrete around the base of the litter bin on Market Lane to improve general appearance: The PC will assess the bin as to whether an alternative might be better for the area.

Information Commissioner's office renewal of data protection registration. Noted.

Mr P Foster, Cricket Club's request to change the use of grant money awarded by the PC: Cllr Manley will arrange to meet Mr Foster to discuss this in more detail.

CCC Minor Highways Improvement – invitation to make representation of the PC's submitted grant application. Cllrs Bald and Manley will attend.

CCC application to divert public footpath 24: Cllr Ward confirmed that there is no rare tree at this location. It was agreed that the footpath should be diverted as proposed and remain a public footpath.

Mr J Cole complaint regarding fence damage during recent flood amelioration works: Councillors agreed that the fence in question was already quite old and damaged from years of general wear and tear, and that the PC is not responsible for repairs to this after carrying out the work to the ditch.

Mr T Waterhouse, Stagecoach problems manoeuvring buses past parked cars in the High Street. Councillors agreed that the PC has done and is doing all it can to deal with the problems of parking on the High Street. Any change in the law eg to install and enforce double yellow lines would have to be dealt with by the CCC Highways and is not within the PC's power.

SCDC Proposed Modifications Consultation: Cambridge Local Plan 2014 – Proposed Submission & Submission of South Cambridgeshire Local Plan 2014. The chairman urged councillors to respond to this consultation.

Ms S Jay, City of Ely Council VAT training course on 12<sup>th</sup> February 2016, cost £100 plus VAT: It was agreed that the clerk could attend this training when it runs next year.

Mrs S Mudge, Cathodeon Centre secretary, request for permission to raise the height of the railings around the play area at the Centre: Agreed. This work will be funded by the Cathodeon Centre trustees.

*Note: Copies of the full minutes, reports and documents referred to above can be inspected at the parish council office.*

Nina, Carl, Nicola and Helen welcome you to

## BOYZ 2 MEN BARBER SHOP

**Opening Hours:**  
 Monday Closed  
 Tuesday 9:00am - 6pm  
 Wednesday 9:00am - 8:30pm  
 Thursday 9:00am - 6pm  
 Friday 9:00am - 6pm  
 Saturday 8:00am - 3pm

**Fully air conditioned**  
 LATE EVENING 'TIL 8:30PM  
 Wednesday

Traditional Hot towel wet shave  
 no need to book an appointment.

Special rates for senior citizens Tuesday - Friday only  
<http://www.boyz2menbarbershop.co.uk/>  
 113<sup>A</sup> High Street, Linton  
 Tel: 01223 894481

TRIPLE J FITNESS

AMAZING GYM DEALS

Best ever! check out these great offers...

GYM BUDDY £20 per month

NEW! STUDENT MEMBERSHIP £45 FOR A DOUBLE MEMBERSHIP

\* STANDARD MEMBERSHIP FROM JUST £22.92 per month! \*  
 YEARLY, MONTHLY AND PAY-AS-YOU-GO OPTIONS AVAILABLE

01223 89 11 64 [joe@triplefitness.co.uk](mailto:joe@triplefitness.co.uk)  
[www.triplefitness.co.uk](http://www.triplefitness.co.uk)

## DACRE LONG Local Painter and Decorator

66 Chalklands, Linton

Professional work to highest standard for over 15 years

Trade and Private Customers

Free quotes with written specification

Phone 01223 893176 or 07837513837

Discounts for Senior Citizens

Students 20% off

THE CUTTING ROOM

Special Kids Prices

37 Bartlow Road, Linton  
 Tel: Pippa (01223) 890890

**OPENING TIMES**

Mon	Closed	Senior Citizens
Tues	9-5 pm	Tuesday & Wednesday
Wed	9-7 pm	Late opening until 7 pm on
Thurs	9-7 pm	Wednesday & Thursday
Fri	9-5 pm	
Sat	9-3 pm	

## PJB Maintenance

No job too small

Ground work, Patios, Floor & Wall Tiling, Fencing, Roof repairs, Demolition

CPSC Licence  
 Free Estimates

Call Peter Belsom on  
 Mob: 07799 183308  
 Tel: 01223 891273

## CHIMNEY SWEEP

### J. L. WIGHT

Guild of Master Sweeps.

Qualified advice

Problems solved

Certificates issued.

[www.camsweep.co.uk](http://www.camsweep.co.uk)  
**01954 253315**  
 9 Cow Lane, Rampton

## Westlakes

Painting & decorating exterior and interior

Les Westlake  
 Mobile: 07929 501101  
 Tel: 01223 892866

Clive Westlake  
 Mobile: 07900492127

## ClearTax & ACCOUNTING LTD

Quality, friendly accounting services and taxation advice.

Sole trader and small company specialist.

Free initial consultation

The Granary,  
 Yews Farm Yard, Hadstock

t: 01223 894036  
 e: [janine@cleartax.co.uk](mailto:janine@cleartax.co.uk)  
[www.cleartax.co.uk](http://www.cleartax.co.uk)

## SHINE WINDOW CLEANING SERVICES

INTERIOR AND EXTERIOR WINDOWS, GUTTERS, FASCIAS, CONSERVATORIES AND PATIO CLEANING

62 Bartlow Road,  
 Linton,  
 Cambs  
 CB21 4LY

Tel. **01223 890491**  
 Mob. **07587 866309**

PLEASE CONTACT FOR A FREE QUOTATION

FULL PUBLIC LIABILITY INSURANCE

[shinewindowcleaningservices@gmail.com](mailto:shinewindowcleaningservices@gmail.com)