

Guides Annual  
Jumble Sale at 2pm  
on  
Saturday 23<sup>rd</sup> March  
in Linton Infant  
School hall.  
See page 4

Established 1987

Over 2,350 copies  
distributed  
free in Linton,  
Hildersham,  
Hadstock &  
Bartlow

# THE LINTON NEWS

www.linton.info e-mail lneditor@linton.info

March  
2019  
Vol. 32 N° 12

Publication date  
Monday 4<sup>th</sup> March

E & E PLUMRIDGE  
Design & Print  
41 High Street  
Linton  
01223 891407

## Who has wrapped the tower?



The scaffolding goes up

unusually for this period, it is a striking example of Art Deco design.

In 2008, it was designated a Grade II listed structure, due to the tower having landmark value because of its prominent and exposed position on Rivey Hill.

The tower was constructed in brick to harmonise with the landscape and has a dodecagonal brick exterior that provides a monumental presence.

The sculptural quality of the tower is enhanced by twelve tapering buttresses. This impressive buttressed interior contains an open structure of steel girders which supports a potable water tank.

In the autumn / winter of 2017/18, a number of falling roof slates prompted a health and safety investigation which, coupled with surveys of the structure, indicated that the surface of the masonry was deteriorating at an accelerated pace. To halt its decline and remove any further health and safety risks, it was decided that essential maintenance works were required.

The work involves completely scaffolding the tower, replacing an estimated 100m<sup>2</sup> of brickwork – with the repointing of a further 500m<sup>2</sup> and the application of a protective



Oh so high

All photos from Cambridge Water

hydrostatic coating. Further to this, replacing and re-fixing a number of slipped and missing roof tiles and repainting the woodwork of fascia and dormer style roof vents will also be undertaken.

The remedial works are currently on target and are expected to be completed by late February / early March 2019.

All text and photos taken from the Cambridge Water website with permission.  
Editor

## Granta Group consultations

GRANTA Medical Practices have pleasure in announcing they will shortly be holding *Group Consultations*, also known as *Shared Medical Appointments*. These are organised meetings where 10 to 15 patients with the same condition or set of clinical problems, come together in a supportive group setting.

This is a more personalised way of supporting patients with long term medical conditions and allows patients to learn from each other as well as from clinicians. The sessions will last from one to two hours, including a one-to-one with a health care professional for each group member.

Group consultations can be used for a wide variety of long-term health conditions such as diabetes, respiratory conditions, skin conditions, weight issues and many more.

The first long term medical condition to be focussed on is diabetes. If you would like to register your interest please contact Kelly Austin, Granta Social Navigator.

For more information about Group Consultations go to [www.groupconsultations.com](http://www.groupconsultations.com)

Jennifer Aston,  
Advanced Nurse  
Practitioner

## BARTLOW 3 counties 3 CHARITY WALK

THE 2019 Bartlow 3 counties Charity walk will be on Sunday 5<sup>th</sup> May. This will be the 16<sup>th</sup> year of the walk and in that time it has raised over £150,000 for local charities.

There will be walks of one mile, six miles, nine miles and 13 miles. Prices are the same as last year. Online prices: £25 family ticket (two adults and up to three children), £12 Adult, £5 child (12 and under), On the day: £30 family ticket, £15 Adult, £5 child. Children's activities are free.

The wonderful Linton Jazz band will be playing for you and there will be refreshments, a beer tent and activities for the children. The theme this year is World War Two.

We are always looking for helpers. Whether it is car parking, helping with the raffle, face-painting, decorating biscuits with the children or staffing the bar. If you happen to be free on 5<sup>th</sup> May but don't fancy walking, please contact Duncan Ogilvy on 893644 or [duncan.ogilvy@btinternet.com](mailto:duncan.ogilvy@btinternet.com)

Tickets go on sale on the website on the 1<sup>st</sup> April see [bartlow3countieswalk.co.uk](http://bartlow3countieswalk.co.uk) Raffle tickets are available locally

Henrietta Findlay,  
550041

## Extract re: A1307 from Parish Councils report

At last work has started on the £13 million project to make the A1307 safer. The first job, reducing the dual carriageway to one lane to allow a safe entry/exit to Dalehead Foods, is complete. The rest of the project should be delivered between now and the end of March 2021. This is what we expect the timetable to be:

### By end of March 2019

Upgrade of traffic lights at Linton Village College

### To end of March 2020

Bus Lane from Dalehead to Village College (April/May)

Upgrade of Cycle path from Hildersham to the Village College (April/May)

Traffic lights at top of Linton High Street – further consultation May/June (issue of no right turn still to be resolved)

Hildersham Light Controlled Crossing – awaiting date but before the end of financial year

Dean Road Crossing – left turn only from Bartlow. Crossing from West Wratting side remains open and central reservation upgraded. Before the end of financial year.

Dual Carriage Way Linton to Horseheath to have average speed cameras installed. Awaiting date.

### To end of March 2021

Roundabout at the Bartlow crossroads – date to be confirmed  
Travel Hub (bus stop and parking area), Bartlow Road near roundabout – date to be confirmed

### Under Review

The proposed bus lane from Bartlow Road to Hadstock Road is being reviewed again as there are difficulties with land ownership and cost. It may not be cost effective given these difficulties and that most buses pass through Linton.

Latest details can be found at: [www.greatercambridge.org.uk/transport/transport-projects/cambridge\\_south\\_east\\_study/](http://www.greatercambridge.org.uk/transport/transport-projects/cambridge_south_east_study/)  
Councillors John and Henry Batchelor

## Eastenders star to attend family fun day

MY name is Ali Wright. On Sunday 28<sup>th</sup> April, I will be running the London Marathon to raise money for The Roy Castle Lung Cancer Foundation Charity. I sadly lost my dear nanna to this dreadful disease in 2015 and so this is the reason I am taking part.

I have to raise £2,000 to enter the marathon and so as well as doing car washes I will be hosting a charity football match/family fun day from 11am on Sunday 7<sup>th</sup> April on Linton Recreation Ground.

There will be lots to do for all ages, including food, drink, candy floss, face painting, bouncy castle, helter-skelter and the rodeo bull for the adults. There will also be an opportunity for photos and autographs with Jamie Borthwick (known as Jay Mitchell from Eastenders).

I really hope to see familiar and unfamiliar faces of Linton and surrounding villages.

Everyone is very welcome, and I hope you enjoy the day.

If you are unable to attend and would like to make a donation please visit my just giving page below, or alternatively email me and I can send the link over this way.

[www.justgiving.com/AliWright4?utm\\_id=26](http://www.justgiving.com/AliWright4?utm_id=26)

Ali Wright,  
Paynes Meadow,  
07771 500536  
[alismassage@hotmail.co.uk](mailto:alismassage@hotmail.co.uk)

## Linton Jazz anniversary concert



Karen at Haverhill

LINTON JAZZ will be celebrating 20 years of music-making and fundraising for charities at their concert at 7.30pm on 23<sup>rd</sup> March at Linton Village College.

Karen Sanderson, their musical director, said: "Over 20 years the band has given over 200 gigs and raised over £150,000

for loads of great causes such as the Heroes, Cancer Research UK and churches in Linton and Cheveley."

"It's been fabulous fun – our audiences love the skills and infectious enthusiasm of the members of the band, who give all their time at rehearsals and concerts for free."

"Starting back in 1999 with a few friends and family members, the band has grown and gone from strength to strength," Karen said. "It now boasts over 30 members, aged 12 to 60-something. The idea of the band is to have fun playing jazz. We've been very lucky to have a core of adults who do an amazing job. It's a vitally important part of the band that younger members come and join us. They tend to move away when they go to college or university, but some of them go on to play in the

National Youth Jazz Orchestra or become professional musicians."

"There are no auditions – I love people digging their old musical instrument cases out of their loft and coming along, maybe with their sons or daughters who play. And to celebrate 20 years, we're inviting all our previous members to come back and join in."

Tickets (£10, OAPs £5, Under 16s free) are available on the night or in advance (recommended) online at <https://lintonjazz20.eventbrite.co.uk>.

There will be a fully licensed bar with real ales from The Portable Pint.

For more information contact Karen Sanderson on 07748 917513 or me see below

David Williams,  
07880 592706.



The band in full swing at the Marven Centre Sawston

Photos provided by Linton Jazz

## Too good for jumble...

NEW in this time is a chest freezer 5ft long by 2ft deep by 3ft high.

Still available are the white metal, decorated king size headboard and a curved solid pine single bedhead.

If you are interested in any of these or if you have an item to sell to benefit a charity please ring Kate France on 891602 or email [kfrance@profsoundconsult.com](mailto:kfrance@profsoundconsult.com)

The 1992 Encyclopaedia Britannica raised £30 for Walk the Walk Breast Cancer research.

NB: The donor chooses the charity to receive the money.



# Readers write...

Post and email addresses and deadline for letters are on this page. All letters for publication must have a full name, address or phone number to enable us to check authenticity.

Dear Editor,  
It seems we have a new car park in the village High Street, and it's called the pavement. Why do these people think it's perfectly alright to park their cars on the pavement and force pedestrians to walk in the road and face the possibility of being hit by traffic?  
Mike Judge, Joiners Court.



The new car park  
Photo supplied by Mike

Dear Editor,  
I was visiting my childhood home, when I noticed the post box in Balsham Road had gone.

I have lived on and off in Linton for many years, coming and going while at University. I remember the old Post Office and the one before that. As a post box is still outside the first Post Office I remember, just a stones-throw from the Bakery I thought it odd someone decided the one in Balsham Road was an eyesore.

Post boxes are seen less nowadays and I thought it was so sad. They are an integral part of our Britannia in a small green corner of Cambridgeshire.  
Harry Bowyer by email

*Editor's note: This is due to an issue with land ownership now that the land has been sold, see Parish Council Minutes on p8*

## Our thanks

Dear Editor,  
Thank you for the interesting story on *The Linton Railway 1865 to 1967* by Garth Collard. Living fairly close to the former line as it grazed Cardinal's Green, I have been interested in its history since we moved here 37 years ago.

Your readers may be interested to know that there is a short film of the last train from Cambridge to Haverhill on 4<sup>th</sup> March 1967 on you tube.

[www.youtube.com/watch?v=8DffFQ3wuqY&t=5s](http://www.youtube.com/watch?v=8DffFQ3wuqY&t=5s)  
Rosemarie Parks, by email

## News from St Mary's

LENT begins on 6<sup>th</sup> March. We shall begin with our service for Ash Wednesday at 7.30pm on that evening, with the opportunity to be marked with Ash as reminder of your mortality, and a sign of reliance on God for forgiveness and help as you begin the journey of Lent towards the Easter celebration of eternal life.

There are attractive booklets available in St Mary's containing 40 days of short *Reflections on The Beatitudes* of Jesus. They're for anyone to pick up who would like to use them throughout Lent, whether a regular member of the Church or not. There are also details of Lent Groups to sign-up for – again, you don't need to be a regular member to join us in keeping Lent this way.

On Mothering Sunday, 31<sup>st</sup> March, our 10am service, *Together with God* is especially intended as worship for adults and children together. As usual, there will be flower posies for mothers, grandmothers and everyone who cares within the community – potentially, all of us.

A new youth group for young people of ages nine to 13 is starting at St Mary's. The first meeting is at 4.15-5.45pm on 3<sup>rd</sup> March in the church pavilion. All are welcome for games, discussion of *Big Questions* and refreshments.

Also on 3<sup>rd</sup> March, *Wild Church* will be meeting to celebrate the nesting season from 2.30-4pm in the pavilion and churchyard

On 17<sup>th</sup> March Messy Church will celebrate St Patrick's Day from 2.30-4pm in the Church.-Maggie Guite (Rector of St Mary's)

[margaret.guite@icloud.com](mailto:margaret.guite@icloud.com)

Letters may be edited. Opinions are not necessarily those of the Linton News.

Anonymous letters will NOT be published but names and addresses may be withheld if requested.

Dear Editor,  
How commendable it was of you to inform your readership of the anomalies of the non-geographic number that Granta Medical Practices are now using to contact them. It would appear that our once friendly local Doctor's Practice is now going the way of the major utility companies, and the various other organisations that are using these non-geographic numbers to enhance the profits of BT and themselves, at the inconvenience and expense of the consumer, or in the case of Granta Medical Practices – member. What sort of designer speak is this which is emanating from the Communications Manager of our now very large village practice? Overnight we have ceased to be patients of a local surgery and are now deemed to be members of a large and supposedly more efficient organisation. How Orwellian is this? Calling us members instead of patients is surely the thin end of the wedge. Are we going to be charged a yearly membership fee next with probably tiers of levels of membership, diamond being the best and of course the dearest and the entry level being bronze and the cheapest. Bronze probably only allowing access to a virtual doctor, oops I mean clinician (more designer speak), whereas diamond gives you a house call at a time to suit yourself with the doctor of your choice.

Whoever in the Granta Medical Practice organisation came up with the idea to call us members instead of patients with the rose-tinted idea that it sounds more friendly or inclusive is surely on Planet Zog. This sort of designer speak needs to be killed off immediately and the Communications Manager wouldn't then have to put an explanation (in brackets) when she's communicating to us by writing an article in your excellent tome.

John McCarthy, Magna Close, Great Abington. 891731

Dear Editor  
One of the Co-op's roll cages was dumped down by the riverside on the Camping Close on Monday. After more than 48 hours it was still there.

Someone rolled it (and most of the cardboard it had contained but had been strewn over the field) back to the Co-op on Wednesday evening in an evident fit of civic duty. I have for some time been thinking that the village would benefit greatly from a Linton Village Volunteer Group to undertake this sort of activity and to help put right some of the thoughtlessness that can spoil a really pleasant village environment – not least the pollution of our potentially lovely river by all sorts of rubbish which is very sad to see. Does such a group exist and if not, does anybody else think the same?

John Glazebrook, address withheld  
ps While on my soapbox could I say I think our village street cleaner does a great job?  
pps Love the Linton News

## Service of thanksgiving

ST BOTOLPH'S Hadstock is holding a service of thanksgiving at 3pm on Sunday 17<sup>th</sup> March for the repair works carried out in 2017-2018 and for the contribution of so many in making them happen.

The Bishop of Colchester, the Rt Revd Roger Morris, will preach at the service.

All welcome.  
For further details contact me at [paula.greatford@btinternet.com](mailto:paula.greatford@btinternet.com) or on 01799 599141  
Paula Griffiths

THE LINTON NEWS Next Publication 1<sup>st</sup> April 2019  
DEADLINES for ADVERTS Monday 11<sup>th</sup> March  
NEWS ITEMS Wednesday 13<sup>th</sup> March

ITEMS FOR ADVERTISING MANAGER  
Limited space on waiting list for Linton businesses  
Changes to ads can be sent to: Judith Rouse  
Email: [adds@linton.info](mailto:adds@linton.info)

ITEMS FOR THE EDITOR  
Can be put in the Linton News Box in the Post Office  
Editor: Fran Armes, 891517 email: [lneditor@linton.info](mailto:lneditor@linton.info)

For distribution queries contact:  
Delivery manager, Jenny and Chris Murison, 660408, or 07905 384741 or email [Lndelivery@linton.info](mailto:Lndelivery@linton.info)

## LINTON DIARY

For entry in this list, ensure that your event is written into the diary in the Post Office; failure to do so could mean non-entry to the diary here. You may also email your event details to [diary@linton.info](mailto:diary@linton.info)

Call 893619 for an audio version of the Linton News.

Details of items in bold type may be found in this edition.

- WEEKLY
- New Age Kurling, Mondays 2-3pm, VH
  - Beacon Astro Football, Mondays, 3.05-4.30pm LVC
  - Netball, Monday evenings, 6.30pm junior, 7.30pm adult LVC
  - Linton Granta football bingo, Mondays, 7pm Pavilion
  - Men's keep fit, Mondays, 8-9.30pm LVC sports centre
  - Linton theatre workshop, Mondays (call Joe 01440 703701)
  - Linton Air Cadets, Mon and Thurs, 7-9.30pm (07717 801056) LVC
  - Scrabble Club, alternate Tuesdays, 10am-12noon CP
  - Chestnut Playgroup, Monday-Friday, 9am-2.30pm CC
  - Linton Granta Playgroup, Mon-Fri, 8.30am-2.30pm LVC
  - Linton Granta Toddler grp, Tuesdays term-time 9.30-11.30, LVC
  - Stay and Play, Tuesdays, 10am-11.30am CC
  - WEA, Tuesdays, 10.30am-12.30pm, term-time VH
  - Bumps to babies, Tuesdays, 1-2.30pm CC
  - Storytime, Tuesdays, 2-2.30pm, term-time Library
  - Granta duplicate bridge club, Tuesdays, 2-4pm VH
  - Beacon Red Zone Youth Club, Tuesdays, 7-8.30pm LVC
  - IT club-computer help, Tuesdays, 7pm CC
  - Linton chess club, Tuesdays, 7.30pm CC
  - Tots in tow, Wednesdays, 9.30-11am, term-time only VH
  - Beacon Girls Group, Wednesdays, 3.05-4.30pm RG
  - Walking netball, Wednesdays, 6-7pm, LVC sports centre
  - Jelly Beans playgroup, Thursdays, 9.30-11.30am URC
  - Computer buddies, Thursdays, 2-4pm Library
  - Beacon drop-in Club, Thursdays, 5.30-7pm RG
  - Cricket club, Thursdays, 6-8pm LVC
  - Linton Army Cadets, Thursdays, 7-9pm LH
  - Beacon Youth Group, Fridays, 7-8.30pm, URC
  - Parents, carers and tots Mocha house, Fridays, 9.15-10am CP
  - St Mary's church choir, Fridays, 7-8.30pm St Mary's church
  - Linton Bridge club, Fridays, 7pm, CC

**For sports centre courses please call LVC sports centre on 890248**

- MARCH 2019
- 2 Farmers' Market/Fair Trade stall, 9am-12noon VH
  - 2 Supper and Jancis Harvey, 7pm St Mary's Church
  - 3 Wild Church, 2.30-4pm Church Pavilion
  - 3 Youth Group, 4.15 - 5.45pm Church Pavilion
  - 4 Camera Club, 7pm VH
  - 5 Outreach advice and support, 1-3pm, CC
  - 5 WI, 7.30pm VH
  - 6 Reading group, 8pm VH Upstairs
  - 7 Luncheon Club, 12 noon Old Red Lion, Horseheath
  - 7/9 Annie musical, 7pm LVC
  - 10 Lighthouse, 10.15am-12noon URC
  - 10 Whist Drive, 7.30pm VH
  - 12 VIP Group, 2pm Chalklands
  - 12 Gardening Club, 7.30pm VH
  - 14 Linton Parish Council meeting, 7.30pm CC
  - 15 Daylight readers, 10.30am Library
  - 17 Walking group, 11am, Church Lane
  - 17 Messy Church, 2.30pm St Mary's Church
  - 19 Historical Society, 7.30pm VH
  - 20 Cambridgeshire hearing help, 9.30am-12 noon HC
  - 20 Introducing family foods workshop, 1-2.30pm CC
  - 21 Linton Parish Council meeting, 7.30pm CC
  - 23 Drop in Learn to play (music), 10am - 4pm LH
  - 23 Guides Jumble sale, 2pm LIS
  - 23 Linton Jazz concert, 7.30pm LVC
  - 30 Linton Music Series, 7.30pm LVC
  - 31 Mothering Sunday, 10am St Mary's

- APRIL 2019
- 1 Camera Club, 7pm VH
  - 2 WI, 7.30pm VH
  - 3 Reading group, 8pm VH Upstairs
- KEY: CC Cathodeon centre, CP church pavilion, D&D Dog and Duck, HC health centre, LH Linton Heights school, LIS Linton Infant school, LVC Linton village college, RG recreation ground, URC United Reformed church, VH village hall.  
Library times: Mon closed; Tue 10am-5pm; Wed 4pm-7pm; Thurs 2pm-5pm; Fri 10am-5pm; Sat 10am-1pm.  
Bin Collection Dates  
Linton refuse collection: Mondays 4<sup>th</sup> & 18<sup>th</sup> March  
Linton blue & green bin collections: Mondays 11<sup>th</sup> & 25<sup>th</sup> March

**G. DYE & SONS**  
GENERAL BUILDERS,  
GROUNDWORK & MAINTENANCE,  
CONSERVATORIES & UPVC WINDOWS, KITCHEN & BATHROOM REFITS  
ALSO INTERIOR & EXTERIOR DECORATING  
REFERENCES AVAILABLE

For enquiries please call  
Mobile: 07961 342887  
Tel: 01223 892089  
[georgedye738@btconnect.com](mailto:georgedye738@btconnect.com)

Free Estimates

LINTON VILLAGE COLLEGE

Looking for a party venue?  
Holding a Meeting?  
Want a venue on your doorstep?  
Looking further than Linton Village College

There is a hall suited for large gatherings, weddings & parties & has access to the kitchen facilities  
Our modern clubs offer bright open spaces. They are interlinked by a walkway and have access to a lawned area  
For meetings, courses or presentations, the bright, airy, box room offers seating for 12 and is fully equipped with presentation equipment

For more details, please contact JENNY COOPER, 01799 599141 or call 01223 891731

**Benten & Co.**  
Chartered Certified Accountants

We are a friendly, well established firm, large enough to deal with most accountancy and taxation matters.

Please telephone for an initial consultation (without obligation)

Abbey House, 51 High Street, Saffron Walden  
Telephone 01799 523053  
[www.benten.co.uk](http://www.benten.co.uk)

CapriBlinds

ALL TYPES OF BLINDS SUPPLIED AND FITTED  
FREE QUOTATIONS  
FREE HOME VISIT  
01223-894020  
or email [colin@capriblinds.co.uk](mailto:colin@capriblinds.co.uk)  
ALL BLINDS ARE MADE IN ENGLAND - FAST LOCAL SERVICE  
Visit [capriblinds.co.uk](http://capriblinds.co.uk)

The Dog & Duck  
69 High Street, Linton  
Tel: 01223 890349  
Pub & Restaurant  
Open All Day, Every Day

Idyllic Riverside Thatched Pub and Restaurant.  
Hearty Home-Made Pub Food.  
Be Assured a Fantastic Welcome and a Perfect Pint!!  
Live Jazz - 1<sup>st</sup> Sunday of every month  
3pm-5:30pm  
Fish and Chips Special on Wednesday £7.50  
Sunday Roast  
[www.facebook.com/thedogandducklinton](http://www.facebook.com/thedogandducklinton)



**COUNTRY MATTERS**  
Text by Oriel O'Loughlin and illustrated by Maureen Williams

**The humble woodlouse**

OF all the innocent critters around, surely the humble woodlouse is the tops. Its proper name is *Oniscus Asellus* but you may know it as a roly-poly, a slater, an armadillo bug or a pill bug, this last thanks to its habit of rolling itself up into a tight ball in self-defence.

It is actually not an insect but a terrestrial crustacean, being an isopod related to shrimps and crabs. Its watery ancestry has left it happy in damp and dark conditions, hiding under stones in gardens, woods and hedgerows in the daytime, and foraging for rotten vegetable matter and fungi after dark.

You might consider its presence in your house, in holes in the plaster, under the doormat, coming through cracks in the floorboards and lurking in the under stairs cupboard to be not so innocent. But it is not damaging in any way and is not interested in your kind of food, unless of course you like decaying vegetables.

You can sweep away woodlice and watch them curl up, or Hoover them up and just empty them back into the garden from whence they came.

But before you do that, take a closer look. Adults are around 1.4cm long. They have 14 segments of exoskeleton, with seven

pairs of jointed legs and they live for two or three years. If you see one lying with its legs in the air, it probably means its time is up.

There are 30 species in the UK, ranging from pink to brown to grey, and 3,000 species worldwide. Every two months, it grows too big for its scaly armour and has to moult. First the back half is shed and the front half follows a day or so later.

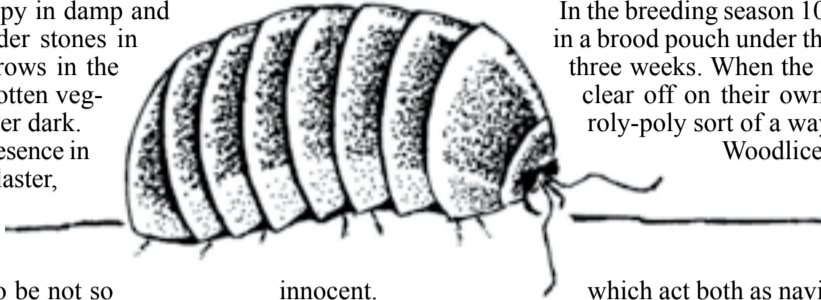
In the breeding season 100 – 200 eggs are carried in a brood pouch under the female and hatch after three weeks. When the young reach 2mm, they clear off on their own to lurk and loiter in a roly-poly sort of a way.

Woodlice have a pair of antennae to help find their way around and two small tubes called uropods at the back,

which act both as navigational aids and drinking tubes. So the woodlouse drinks from front and back, and even through its scales.

Even more weird is the fact that it doesn't pee – instead it just exudes a smelly ammonia vapour straight through its scales.

We were discussing the advantages of this for humans but in the end Ben plumped for getting up several times in the night.



**Winter colour in your garden**

IN February the Garden Club was given a slide show and talk by Clare Kneen entitled *Winter Gardens and Plants*. There are many plants which can provide colour and scent in our winter gardens. Many winter plants have a long flowering period. Witch Hazel has a sweet scent and colours ranging from orange to red to gold-yellow. *Sarcococca confusa* has scented white flowers and glossy black berries. There is an ornamental apricot *Prunus mume* *Benichidori* with vivid pink flowers.

In January/February snowdrops, crocus, miniature iris and aconites begin to appear. Clare suggested planting a small patch opposite the back door to brighten our day. Or maybe a cornus with bright stems, snowdrops and cyclamen underneath.

There are trees such as acers or birch with white, pink and brown bark. Ruby chard with its vivid red stems not only looks good but you can eat it.

Clare recommended a look at Anglesey Abbey winter walk which is beautiful. Also worth a visit for winter colour are Cambridge Botanic Gardens and Green Island Gardens at Ardeleigh, Essex.

Our speaker for March will be Alan Shipp who holds the National collection of Hyacinths and will tell us all about them. The meeting is at 7.30pm on Tuesday 12<sup>th</sup> March in the village hall. Visitors welcome.

The photo classes for the Annual Show on 27<sup>th</sup> July are: *Whatever the weather; Hard at work; In the garden; Transport.*  
Anita Daws, 892113, lgcsecretary@yahoo.co.uk

**Talks given on RNLI**

EVER wondered what caused the Lifeboat Service to start work in the UK? Well I am able to come and give a presentation to your group, illustrated or not, for up to 45 minutes with a question and answer session included.

I charge no fee but do respectfully ask you consider a donation to the Royal National Lifeboat Institution (RNLI)  
I look forward to hearing from you.

Geoffrey Heathcock BEM JP, 244901  
Chairman and Presenter, Cambridge and District RNLI

**Allstar Cleaning Ltd**  
www.allstarcleaning.me.uk

Your Local, Professional, Carpet Cleaner Dean  
11 years experience

Package to suit every level: Basic, Pet Treatment or Carpet Protector

**£15 off for repeat customers**  
**Free stain spotter for all customers**

Contact Dean on 01223 654652  
or info@allstarcleaning.me.uk to make an appointment.

14 Hillway, Linton, CB21 4JE.

Is planning a party or club on your 'To Do' List?  
Did you know?  
Linton Heights Junior School are now hiring out their hall and facilities

If you are planning a party or club then please get in contact with the School Bursar,  
Jane Morris;  
office@lintonheights.cambs.sch.uk where she can offer you a fantastic hourly hire rate.

**A & R PLASTERING**

All aspects of plastering undertaken:  
Plasterboarding  
Rendering  
No job too small  
30+ years experience  
Free estimates

Tel: 01223890228  
Mobile: 0774 8627920

**POT POURRI 167**

**Pot Pourri 167 The thickness of a sphere's cut**  
A SPHERE has a single cut through such that the volume removed is one third of the total. What is the thickness of the removed volume in terms of the sphere's radius?

**Pot Pourri 166 – The shortest distance**  
The shortest distance to the road is 3,900 metres. The distance along from the map's road start is 6,649 metres.  
Urania

**NEWS IN BRIEF**

**Hildersham News**

**Hildersham quiz night**  
HILDERSHAM village hall trust is hosting a quiz night on Friday 29<sup>th</sup> March.  
Doors open at 7pm for a prompt 7.30pm start. Everyone is welcome – bring your team of up to eight people or come along and join with others.  
Tickets cost £8, which includes a chilli supper. Please let us know beforehand if the vegetarian option is required. Bring your own drinks and we'll provide glasses.  
There will also be a raffle with the usual array of wonderful prizes. To book, or for further information, contact: Jill on 893596, edheale@btinternet.com

**Lambing Sunday**  
HERE is a special chance to visit the lambing sheds and see newborn lambs from 1.30-3.00pm on 14<sup>th</sup> April. Tea will be served and it will be followed by a special Lambing Choral Evensong at 6pm. Further details next month.

**Hildersham Country Fayre**  
THIS will be held in the grounds of Hildersham Hall on Sunday 23<sup>rd</sup> June and promises to be a day of countryside fun for all the family. More details nearer the time.

**Linton Village College presents the musical Annie**

THE next production by Linton Village College is *Annie* and runs from Thursday 7<sup>th</sup> to Saturday 9<sup>th</sup> March starting at 7pm each night.  
The story is from the book by Thomas Meehan with music by Charles Strouse and lyrics by Martin Charnin. This is a jointly directed Arts Faculty event with over 50 students in the cast and a large student orchestra and student technical team.  
The school has been working on the production since October and all years are involved – 7 right through to 11.  
Tickets are available from www.ticketsource.co.uk  
Linda Kahr, 891233, Head of Arts, Linton Village College

**The Crown Inn, Linton presents**

Monday Fish & Chips £5.95  
Tuesday Rump Steak £8.95  
Wednesday Free Dessert with Main Meal  
Thursday 10% discount on Pizza  
Friday Gourmet Burgers  
Every Weekday Lunch Time Free Dessert with Main  
5:30-6:30 Happy Hour Monday-Friday

www.crownatinton.co.uk  
11, High Street, Linton, Cambs Tel 01223 891759

**ProClean**  
'Your Complete Cleaning Solution'

\*Carpet Cleaning \*Rugs \*Stain Removal  
\*Car Valeting \*Caravans \*Motor Homes  
\*Upholstery Cleaning \*Stain Protection  
\*Floor Cleaning / Scrubbing / Sealing / Polishing  
\*Pressure Washing of Patios Paths & Driveways  
\*Domestic Cleaning \* Top Ups & One Off Cleaning  
\*Gutter / Fascia Cleaning  
\*Contract Office Cleaning (Flexible Options)

TEL: 890433 Mob: 0777 375 8355  
74 Bartlow Rd, Linton, Cambridge, CB21 4LY

**SHINE**

TRADITIONAL WINDOW CLEANING

EXTERIOR AND INTERIOR WINDOWS, GUTTERS, FASCIAS, CONSERVATORIES AND PATIO CLEANING

TEL. 01223 893529 MOB. 07703 518882  
FREE QUOTATIONS

FULL PUBLIC LIABILITY INSURANCE  
SHINEWINDOWCLEANINGSERVICES@GMAIL.COM

afib fitness

1-2-1 PERSONAL FITNESS TRAINING

GROUP FITNESS SESSIONS  
Monday, 7.15pm  
Horseheath Village Hall

afibfitness.co.uk  
07837 065946  
anton@afibfitness.co.uk

A TOUCH OF NAILS  
GELISH MANICURES & PEDICURES  
PERFORMS LIKE A GEL APPLIES LIKE A POLISH

Call Michelle on 07866 017 801  
suocik@talktalk.net  
HORSEHEATH

**BED & BREAKFAST**  
Mrs Monica Clarkson  
4 Harefield Rise, Linton  
Tel: 01223 892988  
Quiet modern bungalow  
Families welcome  
No Smoking

BODY DESIGN PILATES

Su Matthews  
REPS LEVEL 4 PILATES TEACHER & BACK4GOOD PRACTITIONER  
07986 692 334

**Pilates Classes**  
Linton & Horseheath

su@bodydesignpilates.co.uk  
bodydesignpilates.co.uk



# The Marsh mail



THERE are a number of international and national days, some of which we observe and celebrate at Linton Village College.

20<sup>th</sup> March will mark French Language Day and International Day of Happiness. Fortuitously this day will be spent in France enjoying a week of immersive language speaking by a large group of our Year 10 GCSE students.

The Chateau trip has become an important experience for our students, allowing them to sample the culture and language of a foreign country to give a real-life context for their academic studies. It also provides a rich programme of activities that promote team work and encourage students to venture out of their comfort zones.

Our International Schools Award recognises our commitment to international learning activities. It is important that young people have a window into different cultures and countries developing as responsible global citizens.

We are also proud of our achievements in the arts. We have been hugely successful in both ABRSM (The Associated Board of the Royal Schools of Music) exams and Arts Award at Bronze, Silver and Gold. These are an important recognition of the College's success in delivering a broad and balanced curriculum experience. This year's school production, *Annie* will showcase the great talents and hard work of a large number of our students and the skills and hard work of our arts team at LVC. It is brilliant to see so many young people taking pride in creative ventures and performances.

The development of arts leaders amongst College staff and students has helped to extend this experience to younger students at local schools. Pupils at our Trust primary schools have benefited from enriching arts opportunities including African clay mask-making at The Meadow Primary School, the delivering of singing tuition at Howard Community Primary School, resulting in a performance in the Young Voices concert at the O2, and a growing arts partnership provision at Linton Heights Junior School.

Our team of CALSAs (cultural arts leaders in schools and academies) and Arts Cluster is currently preparing for an arts festival to take place in the summer term involving a range of students from CHET (Chilford Hundred Education Trust) schools and across the locality.

Helena Marsh, Executive Principal



IN the first week of February we held our annual presentation evening, which was attended by cadets and their families and friends. It is a chance for us to recognise and celebrate hard earned achievements. It was also a chance for us to officially enrol our new cadets.

I don't have space to list the winner of every trophy and to announce every certificate given but some impressive headline numbers for you are as follows; nine bronze Duke of Edinburgh's awards, four BTEC Level 2s and 27 Air Cadet exam passes. We had one cadet promotion on the evening; Corporal Sean Keenan to the rank of Sergeant.

Linton squadron joined the rest of the sector on the annual ATC Sunday parade in Swavesey when 20 Linton cadets, including our banner party, helped represent our village at this event. As always our banner party looked excellent and you could see the pride and attention to detail that had gone into every single cadet's uniform and appearance for the parade.

As we draw exams to a close for this year we can look forward to making the most of all the new qualifications; cadets are now qualified to fly, shoot and progress further into their cadet careers. Camps become available to those that have just completed their first class and with the much anticipated Easter and Summer camps on the horizon I'd say it was perfect timing.

We have capacity for new cadets to join, so if you or someone you know is 12 years and six months old and in year 8 please get in touch. For more information call 07943873272 or email training.2523@aircadets.org  
Cl Bradley Wright, 2523 Linton Training Officer

**MALLYON & DONALDSON**  
Linton  
*Specialising in both Modern and Traditional building methods.*  
Tel: 01223 891267  
Mob: 07941 220868  
All contracts finished to a high standard.  
Reliable service. Local references available.

**TIM PHILLIPS & Co.**  
Accountants  
Established 1991  
Independent, specialist service for:  
**Small Business • Self Assessment  
Personal Taxation**  
Free initial consultation – no obligation  
**EASY, FREE PARKING**  
Copley Hill Business Park, Cambridge Rd., Babraham  
Off A1307 between Wandlebury and Babraham  
Tel: 01223 830044. www.tpaccounts.co.uk



# The Way We Were

by Garth Collard

## Chaundlers 91-93 High Street



The Bell and Chaundlers in the High Street in 1920

Photo from Garth's collection

THE Barham Manorial Lord, Michael de Furneau, lived here in 1279, renting Chaundlers at 91 and 93 High Street and eight acres of land from his father Simon de Furneau for 3s 9d per year. In 1380, Adam le Chaundler lived here paying two shillings rent per year to the Barham lords.

The house itself was a half-timbered structure with plaster walls. There were twin gables facing the street and the house was thatched with a hole in the roof for smoke from a fire placed in the centre of the large hall.

The large central hall was built in the 14<sup>th</sup> century and the roof timbers were 24ft high. An elaborate wooden screen led to a passageway leading to two further rooms, the kitchen and buttery.

The hall was 14ft high up to the first floor level, 20ft long and 14ft wide. The main door into the passage was covered in the 19<sup>th</sup> century when a large chimney was inserted at the front of the house. The hall house was a classic medieval design.

Dr William Palmer the Linton historian and antiquarian examined the house structure including the roof beams. The open chimney had caused many

of the rafters to be stained by smoke from the central fire. Ladders at each end of the hall led to the first floor where the bedrooms were located.

In June 1381 Wat Tyler led the Peasants Revolt in East Anglia. The peasants rebelled against the rigid enforcement of feudal obligations by the rich and powerful, especially the manorial lords and royal agents. They appealed to Richard II to abolish the most onerous aspects of feudal laws.

In this area the rebel leader was John Hanchach of Shudy Camps and the rebels burned down and looted most of the manor houses and priories

between Steeple Morden and Duxford. They targeted the legal records of the town and the manorial lords and intimidated many of the wealthier householders to join them.

In Linton Adam le Chaundler and his brother John, who was a baker, joined the rebels. Once order was restored leaders, like Hanchach, were hanged and minor rebels like Adam and John were brought to trial and acquitted because they stated they had been intimidated and faced death if they did not join the rebels.

By Tudor times John Lawrence had bought the property. His wife, Mary gave birth to four children, three of whom were girls. The youngest, Elizabeth, achieved national

fame. In the 18<sup>th</sup> century a man named George Ballard wrote a book entitled *Learned Ladies*. Elizabeth Bury, nee Lawrence, was named in the book because she had a national reputation as a scholar. She rose at 4am each day and studied Greek, Hebrew, Latin, Maths and rhetoric. She died in 1642 at Clare where the family had taken up residence.

By 18<sup>th</sup> century Chaundlers had been converted into labourers cottages serving Manor Farm. This farm covered the present day Health Centre and car park and land extending up the Rivey Hill as far as the water tower.

By 1920 the farm, including Chaundlers cottages, had been sold to Mr WF Taylor of Newmarket who gutted parts of the old house and removed the medieval hall screen to a house in Fulbourn. He removed the ladders and inserted staircases

Further alterations divided the house into two dwellings. He also moved a large fire hook attached to the side gable of the house. Dr Palmer persuaded him to return the fire hook, which can now be seen on the gable end of the house next to number 95, the former Bell Inn.

The front plaster is targeted. The late George Seaman Turner carried this out during repairs in 1973.

## PLANNING APPLICATIONS

S/0002/19/LB, Mr Julian Flowers, **5 The Grip**, Replacement of a rotten window frame, secondary glaze bedroom windows and draft proof back and french doors.

S/0483/19/FL, Mr and Mrs Nicholas Wolmark, **4 Emsons Close**, Demolition of existing conservatory, proposed single storey rear extension and new side window to south elevation.

S/0213/19/LB and S/0429/19/FL, Mrs Pamela Phipps, **17 Green Lane**, Removal of hedge and erection of 1.8 metre boundary fence.

S/0494/19/DC, Dobson, **37 Bartlow Road**, Discharge of Conditions 5 (Finished Floor Levels) & 11 (Boundary Treatment) of Planning Application S.1892.18.FL - Erection of a detached dwelling with new vehicular access and alterations to existing dwelling.

S/0370/19/DC, Greene King plc, **Dog And Duck, 63 High Street**, Discharge of condition 3 (materials) of Listed Building consent S/3594/18/LB for kitchen extension to the rear. New fence and canopy to kitchen yard area. Construction of two covered seating booths and decorative arch to garden. Installation of flood barriers to external doors.

S/0312/19/FL, Mr and Mrs Terry Bishop, **13 Lonsdale**, Rear extension and conversion to garage for habitable use.

S/0150/19/FL, Preston, **18 Meadow Lane**, Single storey side extension.

S/0208/19/FL, Mr James Norman, **137 Back Road**, Replacement single storey Front Porch and two storey side extension.

**PLUMBLINE**  
PLUMBING AND HEATING ENGINEER  
PROFESSIONAL DOMESTIC PLUMBING SERVICE  
Including Property Maintenance  
Painting: Tiling: Plastering: Carpentry  
Call John on  
**01223 893903**  
Supcik@talktalk.net  
Fully Qualified and Insured  
Friendly and Reliable Service No Job Too Small

**Pest Right**  
Pest Control  
ants bedbugs bees carpet beetle cluster flies cockroach earwigs  
fleas flies foxes mice moths pigeons  
rabbits rats silverfish spiders squirrels wasps  
Based in Linton, call Mark or Carolyn on  
01223 897982 or 0845 4682412 or 0777 620 4483 for  
a discreet professional insured service  
RESIDENTIAL • COMMERCIAL • AGRICULTURAL • INDUSTRIAL

**Linton and District Historical Society**  
OUR next meeting is at 7.30pm on Tuesday 19<sup>th</sup> March, at Linton Village Hall. Visitors are most welcome. There are always a raffle and refreshments.  
The speaker will be Fiona Hutchings from the Essex Field Club. The Essex Field Club started in 1880 with the aim of collecting biological data and set up a natural history museum in Epping, Essex, with help from many eminent Victorian scientists.  
Now housed in Basildon, the museum's methods of collecting material have changed greatly with the transition to the digital age.  
Please come and join us, we will be pleased to see you.  
I could not finish without mentioning Pat Faircloth who died recently, she was a key member of the society. Pat volunteered to become Speakers Secretary when the future of the society looked bleak. The speakers she chose have proved informative and entertaining which helped tremendously and has put the society back on track. She will be sorely missed.  
Margaret Creek, 893915, ldhscams@pobroadband.co.uk

Acupuncture and Massage in Linton  
Some of the conditions acupuncture can help ...  
• sports injury, muscle tension  
• back, knee, hip, shoulder and elbow pain, rheumatism  
• fertility optimisation, IVF, pregnancy and menstrual  
• headache, migraine, stress  
• high blood pressure and circulatory conditions  
• anxiety and addictions, low energy, low immune  
Peter White MBAcC, MSc, DipAc.  
Call: 01223 891145 for an appointment or free assessment  
Email: enquiries@lintonhealth.co.uk  
Clinic Address: 2B Bartlow Road, CB21 4LY

Linton Complementary Health Centre  
2B Bartlow Road, Linton, CB21 4LY  
• Acupuncture  
• Shiatsu  
• Massage  
• Counselling  
Telephone: 01223 891145  
Email: enquiries@lintonhealth.co.uk

## The Clapper Stile is back



THE Clapper Stile, between the Recreation Ground and Little Linton, is a Grade II listed monument, a feature of the village and part of our village sign.

There are only around five of these in existence, so it is our duty to conserve it.

The Clapper is formed from three wooden beams pivoted on a central post, weighted at one end. These return to a closed position after they have been held down at the un-weighted end for someone to pass through.

The original was installed around 200 years ago, then fell into disrepair and was donated to Saffron Walden Museum. A replacement was installed in Dec 2001 – but laminated beams were used, not solid oak. The base rotted, it toppled over and is now decorating Cllr Potter's garden.

Because of the significance and rarity of the Clapper Stile, our repair – perhaps more accurately, our rebuild – needed to be carried out by a highly-skilled woodworker.

We found this in Dan Harmer, a local carpenter/joiner, who has expertly recreated the original in seasoned solid oak, using traditional construction methods.

This version looks splendid and as if it will last as long as the original. Dan was ably assisted by Tom Burdett, an engineer who was in charge of the ground works. Both Dan and Tom are multiskilled and we needed their expertise on this complex job. Installation was on a bitter February day, feeling colder on the draughty, exposed bank and not without problems.

When digging the post holes Tom discovered a void where soil had been washed away, probably caused by poor drainage in the area. The culvert under the stile was blocked, too. So, the Clapper Stile is now in a slightly different, safer position.

The fencing around the stile will be replaced and the path and drainage upgraded. Now that Ian Blackman has removed the brambles and scrub, trees planted by Susan Anderson and I can be properly appreciated and may flank a bench or seat to complete the restoration of the area.

As ever, the project has taken some time. I first applied for money from the precept around three years ago.

The specification had to be written, tenders submitted, decisions made. Finally, the skills of Dan and Tom brought it to completion – good work!  
Cllr Enid Bald

## Death, grief, cemeteries and memorials

THE loss of a loved one, grieving and how that grief manifests itself are sometimes difficult subjects to discuss in this modern age but here goes:

For people, rituals play an important role in dealing with loss. It often begins with a visit to the cemetery to choose a resting place and continues with a funeral, possibly cremation and interment. Finally, it will involve the placement of a memorial stone/marker which will serve as a permanent tribute to the deceased.

Many people visit the resting place of their loved one at regular intervals like birthdays and anniversaries.

Our culture has also established Christmas Day, Easter, Mother's Day and Father's Day as regular times to place wreaths and flowers at the resting place. This is a way to continually remember your loved ones as a very real part of your life.

Graves can be seen as places to place personal mementos of the person, such as possessions representing their passions that represented their personality, making the grave more individual and special, and in turn more intimate.

This sentimental touch could make the grief easier, as remembering the person's life keeps the relationship alive.

On the other hand, the cemetery authority, the Parish Council has a duty to maintain all the graves and their surroundings; to keep it clean and tidy and to ensure it is a reflection of our respect for those who lie there and who are still a part of our village. In order to make this possible, all Parish Councils



draw up a set of regulations that restrict or prohibit the quantity and nature of objects placed on graves; the type and size of headstones permitted; what can be planted or not etc.

The problem for a Parish Council is ensuring these regulations are observed in order both to make it possible to maintain the cemetery in a relatively cost effective manner.

As well as to act as a guide when there is conflict between mourning families that might ignore such regulations and become very upset if objects are removed and families with graves in the surrounding area who complain about the "mess", as they believe it detracts from the dignity of their own family's graves.

Linton Parish Council Cemetery Regulations (which were last reviewed February 2016) have a whole section 6 on Memorials. I have provided extracts below of the parts that are particularly pertinent to the paragraph above.

6.3 No permanent memorial of any kind shall be permitted in any part of the cemetery other than a headstone to a coffin grave or a tablet to a casket grave or memorials in the general areas of the

cemetery pursuant to Regulation 6.29 below. A limited number of plots are available for casket graves where a headstone instead of a tablet memorial is to be requested.

For the avoidance of doubt no raised vaults, railings, kerb stones or other enclosures shall be permitted.

6.5 No headstone in the form of angels or statues of any description shall be permitted. Memorials in the form of religious symbols shall be considered by the Council on a case-by-case basis.

6.6 One vase not exceeding 30cms (1 foot) in height and 20cms (8 inches) in width and containing cut or potted flowers may be placed upon a grave.

6.7 One solar light no more than 10cms (4 inches) in diameter and a maximum of 30cms (1 foot) in height from the ground may be placed on a grave. Naked flames or candles shall not be left unattended.

6.25 No planting shall be permitted on a casket grave. In the case of a coffin grave no plants other than annual bedding plants shall be planted. Any planting shall be within the area originally excavated for the grave and shall be

carried out in such a way that sufficient space for the proper care of the grass between adjoining grave plots is maintained at all times.

The Council reserves the right to remove any planting in contravention of the provisions of the Regulations.

6.26 In the case of any shrub or perennial plant planted within a plot before such planting was prohibited, it shall be kept pruned so that it is no larger than the width or height of the headstone on the plot and if not so pruned may be removed by the Council.

6.27 Any monument, memorial, stone, shrub, plant or other item erected, placed or planted in the cemetery in contravention of these Regulations may be removed by the Council at any time without notice.

6.29 If any person wishes to place a memorial in the form of a seat, shrub, tree, rose, bird box or other appropriate item in the cemetery they may apply to the Clerk to the Council for permission to do so, subject to the proposed memorial being in conformity with any memorial scheme adopted by the Council.

The Clerk may refer any application to the Council for determination, on a case-by-case basis.

I hope this helps everyone to understand what is permitted and why, despite understanding and feeling for your grief, we will have to enforce the regulations.

A full copy of these regulations are available from the Parish Office and on the website.

Cllr Merrie Mannassi

### The Annual meeting of the Parish

THE Annual Meeting of the Parish is to be held at 7.30pm on Monday 15<sup>th</sup> April 2019 at Linton Village Hall.

This meeting is an open forum and a great platform for parishioners to have their voices heard by other residents and the Parish Council.

The Parish Council will also distribute the cheques to the successful applicants for grants for the financial year 2019/2020 at this meeting.

This is an excellent opportunity for residents to raise any issues, or anything they would like to see done in the village, so please come along and take part.

### What has the Parish Council been up to?



AS many of you may have seen by now, a new litter bin has been installed in the bus

shelter on Cambridge Road, opposite the turning to the High Street. This is the first step in the bins project and will hopefully assist in combating the litter problem of our lovely village. The benches project is now well underway with three benches being installed over the coming months.

### An Important date for the diary



THERE will be a Public Consultation to discuss the future of the village hall on Tuesday

26<sup>th</sup> February in Linton Village Hall at 7:30pm. Please put this in your diary and come along to have your say. If you cannot attend but would like more information then please contact Sue Parry, the Secretary of the village hall on 07497 933005 or email info.lintonvillagehall@yahoo.com

**NRS CARPETS**

HOME SELECTION  
FREE MEASURING & ESTIMATING  
All types of flooring available  
Tel: 01223 893634  
Mobile: 07885 173113

**Janet Dobson Design**

**GREAT DESIGN IS GREAT FOR BUSINESS**

Websites, Logos & Brand, Adverts, Print Design, Exhibitions & Illustration

Linton studio:  
www.janetdesign.com  
studio@janetdesign.com  
Tel: 07941 078411

**MHG**

**McKenzie & Haywards Garage LTD**

**MOT by appointment while you wait**  
**Servicing, Collection & Delivery Service**

Unit 3 & 4, Lintech Court  
The Grip Industrial Estate  
Linton, Cambs  
CB21 4XN

Tel : 01223 894140  
Fax : 01223 890035  
mhgarage@btconnect.com

**Cambridgeshire Family Chiropractic Centre**

Bespoke massage and chiropractic care for aches and pains  
Specific techniques for pregnancy and children  
15 years' experience  
Call 07870568548  
www.cambridgefamilychiro.co.uk

**LINTON VILLAGE MOTORS**  
(situated in Great Abington opposite Granta Park)  
www.lintonvillagemotors.co.uk

Tel: 01223 830550

- MOT testing
- All makes of vehicles serviced and repaired
- Tyres at competitive prices
- courtesy car provided
- Polite and friendly staff

Mon-Fri: 8.30am-5.30pm Sat: 8.30am-12.30pm

sqcarsales.co.uk for service & quality

**SQ Car Sales**

Mini Specialist

t: 01223 778 448 m: 07908 128 164

**PJB Maintenance**

No job too small  
Ground work, Patios, Floor & Wall Tiling, Fencing, Roof repairs, Demolition  
CPSC Licence  
Free Estimates  
Call **Peter Belsom** on  
Mob: 07799 183308  
Tel: 01223 891273

**MOPS HAIR SALON**

HAIR BY JO DENNY  
WOMEN | MEN | CHILDREN  
CUTTING & COLOURING

41 LINTON HIGH STREET  
(BEHIND BOSWELL'S BAKERY)  
t: 01223 893 285

### ABBREVIATED minutes of the Linton Parish Council (LPC) meeting held at the Cathodeon Centre on Thursday 17<sup>th</sup> January 2019.

**Present:** Cllr Merrie Mannassi – Chairman; Cllr John Bald – vice-chairman; Cllr Paul Poulter; Cllr Amy Smith; Cllr Simon Hill; Cllr Angharad Hammond; Cllr Kate Kell; Cllr Lee Gardner; Cllr Graham Potter; Cllr Chris Hine; Cllr Enid Bald; Cllr Brian Cox (Dr) District and County Councillors: District and County Councillor Henry Batchelor

**Apologies for Absence** Cllr Carole Campbell, and District Cllr John Batchelor

**Councillors' Declarations of Interest** Cllr Kate Kell declared a prejudicial an interest in item 217/18/19, S137 payments, Cllr Merrie Mannassi declared a prejudicial interest in item 219/18/19, The Village Hall, Cllr Graham Potter declared a pecuniary interest in item 216/18/19, Financial Matters due to an expense's payment.

**Councillor Vacancies** There are currently two Councillor vacancies available for co-option

**Chairman's Comment** The Chairman welcomed the Council to the first meeting of the new calendar year and advised that the main item on the agenda is that of the precept for the financial year 2019/2020.

**Open Forum for Public Participation** The resident in attendance addressed the Council and advised they have concerns relating to the paths within the village. The paths and walkways are in disrepair and this is a real issue, particularly for those with disabilities or walking issues, as well as people with prams and pushchairs.

One area this is particularly bad is from Balsham Road to the High Street where they are inaccessible and dangerous in places. The resident also raised that a few years ago the parking issues at Tower View were discussed and it was proposed to change two large areas of green into an area of parking bays but this has not progressed or materialised.

Council advised that the paths come under the jurisdiction of Cambridgeshire County Council (CCC) and as such these areas need to be raised with them, however the Clerk advised that if the resident took the offices contact details and emailed in, she would gladly help raise this with CCC.

The Parking would most likely be the jurisdiction of South Cambridgeshire District Council (SCDC) as the majority of the houses are social housing leased by SCDC surrounding the area.

The resident also raised that there is a lack of dropped curbs around Tower View, in particular around the bungalows where these are needed. The Clerk and the resident will pick up and see if these issues can be reported to the correct authority.

**To Approve minutes of the Parish Council meeting held on the 13<sup>th</sup> December 2018.** It was requested by Cllr JB that going forward, more detail be included in the minutes following the updates as opposed to 'noted' to add clarity. The minutes of the 13<sup>th</sup> December 2018 were proposed with no changes by Cllr John Bald, seconded by Cllr Lee Gardner. Agreed with three abstentions.

**Matters Arising/Clerk's Report** Update on the clapper stile. There will be a meeting held on Saturday 19<sup>th</sup> January 2019 at the Meadow recreation Ground with the contractor to review the placement of the clapper stile now a new gate has been installed by the adjoining land owner.

Update on benches and bins. These have now been delivered and Local Handyman Services will be looking to install these shortly.

Update on tree guards. These have now been delivered and are being stored by Local Handyman Services ready for installation. Update on the marker for Private John Fincham within the cemetery.

A confirmation date has now been received for the commemorative marker which will be installed on the 21<sup>st</sup> January 2019, this is within a six-week period so there is not enough time for the Army Cadets to issue permission slips for attendance so LPC will look to arrange a commemorative day outside of the placing of the marker.

Update on the skate ramp. The Clerk advised that she was due to have a meeting with the RFO from Saffron Walden Town

Council on the 21<sup>st</sup> January 2019 to review the Contracts Finder website and asked Council for an approximate project budget. The Council reviewed this and advised that a project price range of £60,000 to £100,000 should be used for the initial tender notice.

**Planning Matters** Consideration of the Planning Committee minutes of the 13<sup>th</sup> December 2018 Noted.

Updates on Bartlow and Horseheath Road planning applications. Verbal update from Cllr Enid Bald

The land at Horseheath Road has now been sold, although the purchaser is still unknown to the Council.

Report from the meeting with Abbey Developments regarding the Bartlow Road Planning application. Verbal report from Cllr Enid Bald. It was felt by the members of the Planning Committee that attended the meeting that Abbey Developments were not listening and had not considered the conditions, comments or statutory consultees.

There are continuous amendments being submitted and the developer was adamant they had been advised on the design of the building and the layout by the design team, however, what has been submitted is against the village design principles and policies. A meeting is requested with the design team at SCDC to discuss this.

Updates on the proposed development of 26 affordable houses from Icen Homes on the land to the north of Paynes Meadow, for which a planning application has not yet been received.

An application has not yet been received but there is a potential application for the exception site north of Paynes Meadow. Pre-application advice has been sought with SCDC now.

Update on the Residents Association meeting held on Monday 7<sup>th</sup> January at the Chalklands Sheltered Housing building.

Cllr Simon Hill attended the meeting as a resident and gave Council a brief update on the meeting. He advising that the majority of resident's present were against this proposed development with traffic and the disrepair of the roads around the Chalklands Estate being key issues.

Update from the meeting held on the 8<sup>th</sup> January 2019 with Icen Homes regarding the proposed development on the land north of Paynes Meadow. The plans appear to have changed considerably since the November meeting and they have taken on board a lot of the comments from residents.

A major aspect is the potential impact on the valued landscape which was raised as a constraint in the Back Road planning appeal.

There is a full report which will be available for the public to view in the office, on the information point at the Village Hall and online on the Parish Council website.

Update from the Public Consultation held on Monday 14<sup>th</sup> January 2019 by Icen Homes at the Chalklands Sheltered Housing Building. Cllr Enid Bald was in attendance and advised that the event was well attended and Icen Homes appeared to listen to the residents and take comments and feedback on board. Linton Parish Council will await feedback.

**District & County Councillors' Reports & Business** The A1307 work has been listed and will begin shortly, the rest of the work will continue in spring.

There is a consultation out at the moment from Cambridgeshire County Council (CCC) where the business plans for CCC can be reviewed. It is an opportunity for the Parish Council and members of the public to comment on how we feel money should be spent there is also a housing consultation being undertaken by the District Council at the moment.

If the council or any individuals have strong views then these are all available on the websites.

The Local Highways Initiative (LHI) was heard this week – the bid from Linton was a good bid and was well received the panel, the results will be out early march. The verbal feedback after the presentation was very positive.

Dr Beatrice Ward was thanked for her contribution with this from her time with the Council.

The bidding will open again shortly for next year with a deadline of September / October 2019, so it is worth considering the potential projects for next year's application.

February is the month where the budget is reviewed at the lo-

cal authorities, the District Council is likely to be raising council tax by the max percentage it can, 1.99% on the base rate. It is unknown yet if the County Council will raise its tax.

The post box outside the old post office has moved, this is due to an issue with land ownership now that the land has been sold. They are trying to relocate the post box at the moment. The chair raised that one needs to be kept around the eastern end of the village as there are very few at this area. Parsonage way green was raised.

20 Cambridge Road, the old van centre site, is going to be refused planning permission as there are no affordable units listed for inclusion.

The 4 houses on the corner of Coles Lane and Back Road behind the health centre are going to be refused as 4 properties were considered too many to fit comfortably on this site.

The old caretakers house at Linton Heights is going to be leased to Shire Homes, which is South Cambridgeshire District Council (SCDC) housing letting company. This should be habitable over the coming months. The District and county Councillor Henry Batchelor.

**Monthly Financial Matters** To Approve Accounts for Payment Cllr Chris Hine proposed, Cllr Brian Cox seconded. Agreed with one abstention.

**Update on the internal auditor vacancy for LPC and consideration of the quotation provided by Moore Stephens auditing for the Internal audit for the financial year 2018/2019.**

It was noted by the Clerk that this quotation far exceeded that of the price from previous auditor. Based off this the Clerk requested this item be deferred to allow time to gather additional quotations. This item was deferred.

**Consideration of the final proposed budget and precept by Council for the financial year 2019-2020.** It was noted that Council had previously reviewed the precept and decided upon a budget, however after review concerns were raised that the percentage increase on last year's precept was too high and would cause discontent amongst residents. With this in mind, the Clerk checked with CAPALC and was advised that, although this is not best practise, it is not illegal to adjust.

Considering this, council reviewed the budget and the impact this would have upon the precept and Council tax again to evaluate which projects were likely to be actioned in the forthcoming financial year. Following this discussion, Cllr Paul Poulter proposed a total precept of £175,477 which is a 2.2% increase from last year, Cllr John Bald seconded and put to a vote. **Agreed with one abstention**

**Consideration of the quotation for Microsoft Office 365 for the computers within the office.** Cllr Lee Gardner was tasked with reviewing the options and prices and will prepare a report for the next meeting.

**Consideration of Correspondence Received** Item 8. Parishioners letter re injury from lack of lighting to Coles Lane car park. This item was deferred. Item 14. Booking request for fun fair on the Recreation Ground in May 2019 and a request to cut back the hedge. **Agreed.**

## LINTON PARISH COUNCIL

The Village Hall, Coles Lane, Linton, Cambridge CB21 4JS Tel: 891001

Clerk to the council – Ms Kathryn Wiseman  
Email: lintonpc@btconnect.com

Website: www.lintoncambridgeshire-pc.gov.uk

Facebook: www.facebook.com/lintonpc

Office open: Monday, Tuesday, Wednesday and Friday 9am – 12noon. Closed on a Thursday.

Or by appointment

Date of the next full council meeting:

14<sup>th</sup> February 2019

All meetings held at the Cathodeon Centre commencing at 7.30pm

Carpentry, Plumbing, Tiling  
Door/Window Replacement  
Kitchen/Bathroom Refitting

Fencing & Decking  
Painting/Decorating  
Flat Pack assembly

Property Maintenance

## Steve Jackson

stevejacksonltd@hotmail.co.uk

Extensions and Conversions  
Linton Based

Steve Jackson  
Office 01223 893896  
Mobile 07963 854653

## MOBILE CHIROPRACTIC SERVICE

GCC-Registered Chiropractor

ALEXANDER M SMITH

01223 967565  
SOUTH CAMBS AREA  
(Based in Linton)

Effective care in the comfort of your home

- Low back pain & sciatica
- Neck pain & headaches
- Muscle spasm/tension
- Shoulder & Knee pain
- Postural problems

www.alexandersmithchiropractor.co.uk

## GARDENER

N.C.H. QUALIFIED

All garden maintenance including:

- Weeding – Mowing
- Hedge cutting - Turfing
- Garden clearance
- Shed /fence treatment
- Hard/soft landscaping

For a friendly professional service please call:

Darryl Tilling  
01223 892133  
or  
07932 021277

## KJL Roofing

All roofing repairs, lead-work, renewal of pitched or flat roofs

New guttering, repairs/unblocking

Free estimates before any work commenced

25 years + Experience

Tel: 01223 892542  
Mob: 07958 618440



zigzagpilates

- Qualified Body Control Pilates Teacher.
- Classes and 1-1 sessions
- Specialising in older and less able clients.

Contact Rachel 07905105081  
Rachel@zigzagpilates.co.uk  
www.zigzagpilates.co.uk

## Ask Edward

Garden & Home Routine Garden & Home Maintenance

Gardens cleared, restored & enhanced.

Year round garden programmes available. 'No job too small'

For a free estimate & friendly service, Linton based, call 07768701010 or Email: edwardsyarden1984@gmail.com


## Westlakes

Painting & decorating exterior and interior

Les Westlake  
Mobile: 07929 501101  
Tel: 01223 892866

Clive Westlake  
Mobile: 07900 492127

## Barn Owl Accommodation



Private self-contained annexes all in Linton

www.barnowlaccommodation.co.uk  
Call Suzanne on 07767 941188

## STEVE WEBB

Painter & Decorator

Now upcycled furniture painted to your requirements

Excellent present ideas

Call for viewing details

Tel: 01223 893864

## PSH Electrical Services

Rewires, New builds, Extra lights, Extra sockets, Repair works, Garden lighting, Showers

Registered NIC EIC domestic installer

email pshelectrical27@gmail.com  
telephone 07867980738



CHRISTOPHER MARKHAM HOME & GARDEN SERVICES

Interior/Exterior Decorating

Fencing, Guttering  
Turfing, Garden Clearance  
Lawn & Hedge Cutting  
Decking & Patio Cleaning  
Patios & Driveways

Call on (01223) 892889 or 07973 294946  
No job too small...