

June  
2020  
Vol. 34 N° 3  
Publication date  
June 2020

THE LINTON  
**NEWS**  
www.thelintonnews.co.uk,  
email editor.linton.news@gmail.com

E & E PLUMRIDGE  
Design & Print  
41 High Street  
Linton  
01223 891407

## Letter from the editor

The way that Linton folk have adapted and responded to life under the shadow of the corona virus pandemic is nothing short of remarkable.

The local food shops, cafes, post office, vegetable stalls, farmers market, public houses turned food distributors and take-aways have changed to collection and delivery services so that we can all get food and groceries even if isolating. More details are given on page 7. Linton residents and businesses have not forgotten those suffering financial difficulty as the food bank has been supported by all. Remember the number of us needing their help may increase as lockdown ends.

Local people, neighbours, the Community Help volunteers, church and community groups and the Parish Council have all helped to make this work eg by getting out information, picking up items for collection and making telephone calls and sending emails to cheer each other up.

Linton folk are still adapting as shown by the fact that the *Small Gifts* shop went online recently at [www.smallgiftslinton.co.uk](http://www.smallgiftslinton.co.uk) selling cards from a displayed array. They hope to add gifts to the list soon. In addition the Pear and Olive scratch kitchen at Hildersham is opening *The Pantry* farmshop and cafe soon see [www.pearolive.com](http://www.pearolive.com)

During this time the Linton News team has not always been able to produce and deliver a full size hard copy paper and has not been able to advertise the businesses in Linton in our usual way. However, as lockdown eases, the Linton News team would like our readers to know that we hope to get back to printing and delivering a hard copy with advertisements very soon.

We are keen to support our business community as they get to grips with the challenge of getting back to the new normal. We shall be contacting our regular advertisers to see what form this may take and welcome other businesses to get in contact.

As a postscript, we would also like to mention that Linton Zoo needs donations – see their webpage [lintonzoo.com](http://lintonzoo.com)  
Stay well and safe.

Editor

## The flour is on its way



Photo sent in before the change to the alert message

Photo supplied by Camgrain

FOR Camgrain it has been business as usual under the lockdown rules, with the office staff working from home, social distancing measures in place and upgraded PPE to protect our other staff at all times.

Time doesn't stop for our flour millers, Camgrain is a Key business supplying wheat to mills across the country to get bread into the supply chain to fill our supermarkets shelves. The supply of wheat is not a problem, however there have been delays in getting flour to the supermarkets as it is the correct size packaging that is in short supply.

With harvest just around the corner we are always looking for harvest staff so if you are interested in learning new skills and making new friends please contact us through our website.

Nicki Arnold, Membership Manager  
Camgrain Stores Ltd, Balsham  
[www.camgrain.co.uk](http://www.camgrain.co.uk)

## Rainbows and Silver Linings



A knitted rainbow as seen round and about in Linton

Photo supplied by Editor

IN the past ten weeks the Linton Community Help Team has delivered over 150 prescriptions and helped 110 households. Our volunteers have been amazing, whether at the foodbank, helping with admin and induction, doing shopping, creating resources and google maps, offering weekly phone chats or stepping in to help deliver the Linton News.

However, we came together as an immediate response to the COVID-19 crisis and now local agencies have their support in place and the initial high demand has reduced. Some clients can now get their shopping online, or neighbours have stepped in. Though some volunteers will stay on, some are gradually returning to previous schedules and commitments. So now we are going to be working in a lighter touch way in partnership with local agencies.

We will continue to offer support and signposting and maintain some of our existing clients, but for some areas, such as prescriptions and the foodbank, there will be changes introduced. New and existing clients will be supported to access other services where possible. Our phone line and email will be open but checked by an Admin Team as Faye is moving house. We will have a Leadership Team in partnership with village agencies, using donations and grants to continue to support local needs including food poverty and isolation, and the Linton News will go back to being delivered by your regular team of volunteers.

It's been a delight for all the Team getting to know other villagers and, even when it's been hard work, we have been inspired by others' courage and kindness. We have so loved seeing the rainbows on our rounds and the silver lining is, without doubt, the renewed sense of Linton Community Spirit which we hope outlives Covid-19 and lasts for many years to come.

Linton Community Help Team Admin  
(Ellie, Faye and Yannick)

## Urgent! Old laptops wanted

WE are attempting to source enough devices for all those students who are struggling to complete work due to a shortage of technology in their household. The fantastic Cambs Youth Panel initiative is struggling to meet the demand within the County and we are appealing for donations to enable us to provide more.

If you have an old working device that you no longer need we will happily take it off your hands and rebuild it to allow students to make use of it. So long as it switches on and has a genuine Windows sticker on it, we can make use of it.

Please contact me, if you have a device you are willing to donate to the College for this purpose.

Tim Darby, Linton Village College  
[Tim.darby@lvc.org](mailto:Tim.darby@lvc.org)



## Chestnut Playgroup

SINCE lockdown we have been doing our bedtime stories videos on our Facebook page, which has received some lovely feedback. We have also had lots of learning going on through our class dojo, where we have been looking at life cycles.

Whilst the children have been at home they have been searching their gardens for caterpillars and many have kept them to see how they change into a butterfly.

To follow on with this theme, we have been looking at the story of the very hungry caterpillar and the children have been creating pictures of life cycles and even doing the very hungry caterpillar yoga. We have also been looking at the life cycle of frogs, and some families have frog spawn at home and we are looking forward to seeing how they change.

Chestnut Admin

## South Cambs Family Centre

EVERYONE at South Cambridgeshire Child and Family Centres hopes you are all keeping safe and well. Our groups are currently closed but we are still available to give support and advice or signpost to services if needed. During this challenging time we have set up a helpline:

- We offer an opportunity to speak to a friendly professional from the Early Help District Children's Team about any child or young person aged nought to 19.
- You can ask a question, request support about your child's or young person's behaviours, get help with new routines and boundaries, or maybe just talk about how you are managing parenting in the current situation.
- We will give you advice, support and help with signposting or just listen to your parenting experiences.

Please do get in touch if you require any support, just leave a message on 01354 750420.

We look forward to the day we can reopen our groups safely but in the meantime take care and stay safe.

Emma Chipps, Business Officer  
South Cambridgeshire Child and Family Centres  
01954 284672/VOIP 01223 706109



## Granta says thank you

AS I write this we are still in lockdown and the majority of our children continue to be home schooled.

Some Key Worker children have been attending school and they are filling their days being creative and producing lots of art and craft projects.

During this strange and challenging time both our staff and children have shown themselves to be resilient and able to adapt to a new way of learning. We are incredibly proud of all of them; although the school is not its usual hustle and bustle of activity, as soon as it is safe to welcome everyone back and return to some sense of normality, we know this will change.

Following an appeal to parents, a real highlight for our staff has been the photos and videos they have sent in of their children playing at home. We have been amazed at the amount we have received, and have been displaying them in our staff room as a collage for all of our staff to see.

We would also like to say a big thank you to the community for their generosity, in particular the Dog and Duck in Linton who sent in a hamper for our children.

Emma Jennings  
Communication Officer



## Keeping in touch

LIFE at Linton Heights has certainly been very different since 20<sup>th</sup> March when schools were told to shut their doors. Although school is officially closed, we are all still working hard – staff and children alike. We've had a small number of Key Worker children in school every day supported by a range of teachers and teaching assistants. As well as working on the tasks set for everyone, children in school have enjoyed creating their own obstacle races, making bird feeders, and chalking pavement art.

Keeping in touch has been an important aspect of life during lockdown for all of us, both personally and professionally. Class teachers have been keeping in touch with their classes through a secure online platform we use called DB Primary. Parents have been able to keep in touch through email and the school Facebook and Twitter pages and the staff have got together for regular virtual meetings which has kept morale high and communication flowing.

In the middle of the lockdown chaos, on the 1<sup>st</sup> April, we (along with the other CHET schools) joined Anglian Learning – an established multi-academy trust which shares many of our core values and aims. We are looking forward to working with them to continue to give our children the best possible experiences and opportunities.

Who knows what will be happening when you read this? We are beginning to piece together plans for a partial re-opening so hopefully we will have had a chance to see most of our children in person and life will be getting closer to normal.

Caroline Webb, Deputy Headteacher



## Linton Infant School

AT the time of writing, staff, parents and children are still in lockdown, along with the rest of the country. We are all waiting to see what will be said on Sunday with regards to any relaxing of the lockdown and potentially the re-opening of schools. Who knows, by the time you read this, we could be back in school.

The lockdown has been a steep learning curve for us all but our staff, parents and children have all put a tremendous amount of effort into staying in touch. Technology has certainly played its part and shown its worth as we all communicate by email, zoom, facetime and YouTube to name a few. However, I hope everyone has also taken advantage of the glorious surroundings we are fortunate enough to live in. There is nothing quite like a walk or bike ride in the sunshine to awaken the senses.

Our PTFA has remained active and very kindly funded a goodie bag for each child. Thank you to the staff who organised this and distributed these to the children. A lovely surprise left on the doorstep. The missed Summer Fair and other events will mean that the PTFA funds will be depleted but I know they have lots of ideas ready when we are allowed to organise these again.

Stay safe everyone and thank you for your support and best wishes.  
Kelly Harries, Headteacher



lintongrantaplaygroup  
Pre-school and toddler group  
Linton, Cambridgeshire

WELL it has been very strange these past few weeks, being in contact with our families remotely, trying to support everyone as best we can with their development and learning alongside some of us home schooling our own children and supporting our own families.

We have enjoyed making videos of stories and craft activities and sharing those using social media, and we have been hiding scavenger hunt clues around the village along with some bird houses for our children as well as others to find.

We have set up a *growing* competition to encourage the children and their families to work together. We will continue to pull together, work as a community and look forward to getting back to normal – whatever that may be.

If anyone is looking to start their children at playgroup in September and would like more information please email office@lintongrantaplaygroup.org.uk.

Linton Granta Playgroup team

## Readers write...

Post and email addresses and deadline for letters are on this page. All letters for publication must have a full name, address or phone number to enable us to check authenticity. Letters may be edited. Opinions are not necessarily those of the Linton News.

Anonymous letters will NOT be published but names and addresses may be withheld if requested.

### I hate litter

During the lockdown, I decided I would do something positive on my daily walks. Collect litter!

I have focused on the edges of the Horseheath Road from Rhugarve Gardens up to the A1307. I go out armed with a plastic bag and a long-armed grabber.

So far, I have collected five very full bags of litter in the last few days and I am not finished yet. Mostly the rubbish is cans like Stella Artois, Red Bull and Coke as well as take-away containers, plastic bottles and other undesirables. The small lay-bys up this road seem to be a magnet for such things.

We all live on this earth, and I strongly feel it is our collective responsibility and not to leave it to others to clean up this wonderful planet of ours.

Gill Richardson, Crossways

### Dog mess

Alongside flour and loo rolls shortages has there been a national shortage of dog poo bags?

This can surely be the only explanation for the increased number of dogs who are being allowed to foul our footpaths and pavements in and around Linton. Please, please can dog owners clear up after their pets!

Name withheld

## OUR THANKS

We would like to thank the kindness of the Food for Heroes charity and The Packhorse Inn, Newmarket and Eight Bells Saffron Walden for the pure gift of kindness shown to the staff at Symonds House. Each week whilst the public funding to the charity continues, they are delivering 60 meals twice a week to the staff to give appreciation for the hard work they are doing during this pandemic. Each member of staff from every department is able to have a meal and they are so appreciative.

Ellie Kemp, Home Manager, Symonds House Nursing Home, 891237



Some of the many meals delivered for staff

Photo supplied by the Home

## The Friends of St Mary's

THE Friends have had to postpone their AGM and social and fund raising activities – hosting concerts, talks, tea parties, lunches and BBQs. The remit of the Friends is to raise money for the repair, maintenance and beautification of St Mary's church.

Over the past five years the Friends have donated almost £78,000 to the PCC to cover the costs of repairs identified as necessary in the architect's quinquennial survey of the church. These include repairs to the walls, the rusting grills covering the stained glass windows, the broken drainpipe below the north porch and the construction of a proper drainage system along the south side of the church, replacing the crumbling, weed infested gully.

The Friends also paid for redecorating the north and south porch doors, new wooden music stands for the choir and, in conjunction with the Parish Council, stacking chairs. These are particularly needed for the Remembrance Day service, the Christmas Carol service and large funerals.

The Committee looks forward to getting activities going again in the not too distant future and to supporting the church in the next phase of improvements – hopefully including a better lighting system.

Margaret Cox

THE LINTON NEWS Next Publication 6<sup>th</sup> July 2020  
DEADLINES FOR NEWS ITEMS Wednesday 17<sup>th</sup> June  
email the editor editor.linton.news@gmail.com  
or if no email ring the editor: Fran Armes on 891517

## LINTON DIARY

### Farmers' Market

Saturday 6<sup>th</sup> June from 9am to 12 noon in the Village Hall, with strict Social Distancing and only food stalls.

### Bin collection dates

Linton refuse collection: Mondays 1<sup>st</sup> and 15<sup>th</sup> June

Linton blue and green bin collections: Mondays 8<sup>th</sup> and 22<sup>nd</sup> June  
(Green bin collections may not always be guaranteed)

### Household Recycling Centres

THE County Council has reopened the centres on 11<sup>th</sup> May. There will be restrictions in place. Full details here [www.cambridgeshire.gov.uk/news/re-opening-of-household-recycling-centres](http://www.cambridgeshire.gov.uk/news/re-opening-of-household-recycling-centres)

## Errata

WE gave an out of date number for Tom's fruit and vegetable stall in the previous issue. The telephone number for Tom's stall should have been 07555478764 Fridays and Saturdays only. Editor

## Church bulletin bloopers:

(article by Revd Chris Kemshell, Linton Free Church)

THE sermon this morning: *Jesus Walks on the Water*. The sermon tonight: *Searching for Jesus*.

Ladies: don't forget the rummage sale. It's a chance to get rid of those things not worth keeping around the house. Don't forget your husbands.

The Rector will preach his farewell message after which the choir will sing: *Break Forth Into Joy*

Weight Watchers will meet at 7pm in the Church Hall. Please use large double door at the side entrance.

**Be our guest:** During this challenging time, we have continued to meet online using Zoom and would love you to join us as we stand together. Every Sunday, 150 people have been connecting with our online community with something for everyone; a virtual creche, youth group and not-so-traditional online service. We know that our special community has been a massive blessing to young and old, and would like to extend the welcome to anyone in Linton and the surrounding area. All are welcome to log on, and you can remain anonymous if you wish.

**How can we help?** We serve and support our community wherever we can. Please contact us with prayer requests and if you are in any need.

**To find out more,** visit our web page

[www.lintonfreechurch.org.uk/c19](http://www.lintonfreechurch.org.uk/c19) or

[www.facebook.com/lintonfreechurch](https://www.facebook.com/lintonfreechurch)

or contact Chris: 07764936803

## The Sienna midwife team

UNLESS you have had to use their services, you may not know that Linton has been home to the Sienna Midwife Team for over the past decade. Based at the Children's Centre within the Cathodeon Centre, the Sienna Team offers midwife services for Linton, Sawston, Shelford, Cherry Hinton and Fulbourn.

Throughout the COVID-19 pandemic the team has continued to offer support to residents via regular telephone contact and visits when required. The team, working under Team Leader Lorraine Brown, includes Ruth Norfolk, Kate Marlow, Kate Downing, Natalie Cornell and Natalie Burgess Hayes, the Maternity Support Worker.

The team members have offered their thanks to the Cathodeon Centre for continued access to the site and in particular to Sue Mudge, Cathodeon Centre Secretary, for her help and support, ensuring they can continue to work from Linton when access at the medical practices has been reduced.

Tuesday 5<sup>th</sup> May was International Midwife Day, although with everything that is going on this day went unnoticed by many, myself included.

So many thanks the Sienna Midwife Team for continuing to work hard to support residents of the area throughout these uncertain times.

Parish Clerk

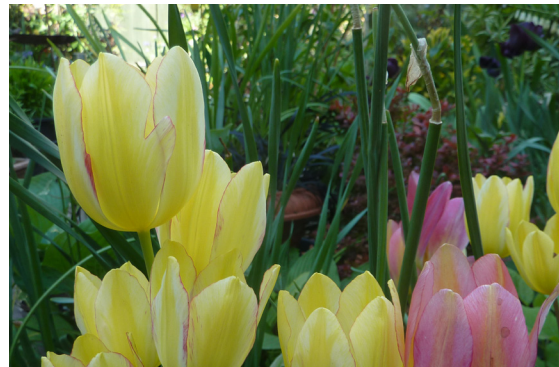
## Linton Gardening Club

THE Linton Gardening Club committee has decided to cancel this year's Village Show planned for 25<sup>th</sup> July. It has been a sad decision to make, as the Show is always such an enjoyable and friendly event which showcases the many talents of people from the village. The committee felt it was just not feasible to hold it in the current circumstances. The Show will be back again next year when, fingers crossed, Covid-19 will just be a distant memory.

The next meeting of the club is planned for 8<sup>th</sup> September so here's hoping we'll be able to meet again then.

Our little garden continues to be a great escape from all that is going on at the moment, whether we are working on it or relaxing in it.

The spring weather may have been as variable as usual but long days of sunshine have meant that our garden furniture has never had so much use.



swifts which nest in our gable eaves every year are back from their annual migration to Africa. With the first roses now appearing, bees buzzing and birds tweeting, it feels like summer is on the way. Keep gardening everyone and stay alert.

Jim and Helen,  
Linton Garden Club  
lgcsecretary@yahoo.co.uk

Photos courtesy of the Gardening Club

## Virtual bake off

IN this time of social distancing, the events committee of St Mary's Church Linton are holding a virtual bake off. There will be adult and junior sections, the entry fee is a donation to the church. We are suggesting a minimum donation of £1. Funds will be used for prizes and to support the church finances at this difficult time. To enter, bake something sweet or savoury, take a photograph of your bake and send it to [events@stmaryslinton.org.uk](mailto:events@stmaryslinton.org.uk) along with the name of your bake, your name and age if under 18. Please send your donation by bank transfer to (St Marys Church Linton PCC, 20-17-19, 90389277) and let us know your reference (ideally bake off and your name).

If you would like to enter but need help with the technology, please phone Charlotte on 892257 and we can arrange to photograph your bake, on your doorstep, at an allotted time. If you are unable to do a bank transfer let us know and we can advise on other ways to donate.

Entries close on Sunday 21<sup>st</sup> June.

There cannot be any judging by sampling, so the judging will be by vote. We are pleased to announce that alongside a public vote we have guest judges; Gemma from the Linton Kitchen and Faye, Ellie and Yannick from Linton Community Help.

Voting will be open from Monday 22<sup>nd</sup> June to Sunday 30<sup>th</sup> June.

To vote please make a donation to the church (St Marys Church Linton PCC,

20-17-19, 90389277), email us to let us know (ideally with reference of bake off and your name) and we will send you a voting form. If you are unable to do a bank transfer let us know and we can advise on other ways to donate and vote. There will be a small prize for the bakes with most number of votes.

Photos of entries will be displayed on your voting form as well as St Mary's Church notice board and St Mary's website ([stmaryslinton.org.uk](http://stmaryslinton.org.uk)). Happy baking.

Charlotte Ellis 892257,  
[events@stmaryslinton.org.uk](mailto:events@stmaryslinton.org.uk)

## Library during lockdown

AT the time of writing there are no new announcements about library openings, but please keep checking the Cambridgeshire County Council website for the latest developments. At

[www.cambridgeshire.gov.uk/residents/libraries-leisure-culture/libraries](http://www.cambridgeshire.gov.uk/residents/libraries-leisure-culture/libraries) you can also find out about online library offerings, including a huge range of free reading and audio resources to download.

Cambridgeshire Library service is now offering a new, free online Arts programme: The Library Presents ...in your house. Visit [www.cambridgeshire.gov.uk/arts](http://www.cambridgeshire.gov.uk/arts) and learn how you can watch and participate in high quality arts and culture performances for free. A number of events are inclusive, signed or subtitled.

Families, in the weeks ahead please look out for the Let's Get Silly campaign launching the annual Summer Reading Challenge, which this year will take place online. The Reading Agency will be providing a safe digital platform where children can set reading goals, review books, view book recommendations and access guides to e-lending. There will also be a forum to chat to friends, play games, download and print activities, as well as family activities with rewards and unlockable content to keep children and families engaged throughout the summer months. The platform will be *free* for children and families to use.

Please continue to take care and stay well. Remember that the characters we meet and places we visit through books can be next best to the real thing while we are stuck at home. So keep reading!

Anna McMahon and Lindsay Healy  
Community Library Assistants

## Get out the bunting folks



The Three Hills in all its finery but people at a distance.

Photo supplied by Hetty

WE had a lovely VE day in Bartlow, despite lock down. The Three Hills pub was brilliantly decorated, with flags and bunting. Many of the houses around the village were decorated too, with the children in the village making a great effort by making flags. There was a two minute silence, at 11am, starting with some wonderful trumpet playing of the Last Post and finishing with Reveille.

Churchill's speech was broadcast loudly at 3pm, listened to by a very jolly group of strictly distanced villagers, toasting with various glasses and picnics. Many dressed up for the occasion in red, white and blue, or 1940's clothing. At 9pm a fantastic rendition of *We'll meet again* could be heard floating across the village, accompanied by the very noisy resident barn owls.

Despite missing the annual Three counties Bartlow walk this year, the village has had wonderful community spirit and really come together to support each other in these strange times.

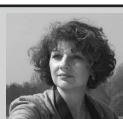
Hetty Findlay



## COUNTRY MATTERS

Text by Oriel O'Loughlin

Illustrated by Maureen Williams



### Learn to love wasps

SUMMER is with us, at least on some days. Sign up here for the Linton News online wasp re-education programme. Even Charles Darwin struggled with the purpose of wasps, but now we know much more about them. Shut your eyes and think of summer – imagine solitary bees nosing around harmlessly in the garden, and then think of wasps.... With bees we think of honey, buzzing and flowers, and with wasps we revert to aggression, annoyance and picnic spoiling. In 908 published articles on the two species since 1980, 98% were about bees and 2% were about wasps. It is so unfair!

There are 7,000 types of wasps living in the UK, and the common ones are yellow jackets and hornets. We will look at the family Vespidae, living together with an egg-laying queen. Like bees, numbers have crashed in the last 20 years, due to pesticides and disease. But also like bees, they are crucial to our ecology, in that they fertilise flowers and crops, and keep down pests and disease-carrying insects. 1,000 wasps can take 10,000 weevils from our gardens every year. Some wasps can drag a caterpillar ten times its own weight into the nest to feed the young.

Nests can be in wall cavities, sheds, roofs, bird boxes and garages. The queen wasp, once out of winter hibernation, starts nest building, making an extraordinary creation from chewed wood pulp and saliva. She does the early work, suspending her pulpy umbrella from the roof

of a hole, moulding the tiers of papery cells beneath, and then laying an egg in each cell. She feeds all the nymphs with chewed up grubs, but exactly how they eat is not suitable material for a family publication.

In five weeks the first brood grows and takes over the building, foraging and feeding, while the queen lays more eggs. But later in the summer, the wasp colonies stop breeding new workers and the

existing workers get desperate for sugary food to give them energy. This

is when they start to hang around rubbish and rotting fruit to increase their lifespan.

Here are some tips to keep up a friendly relationship with them:

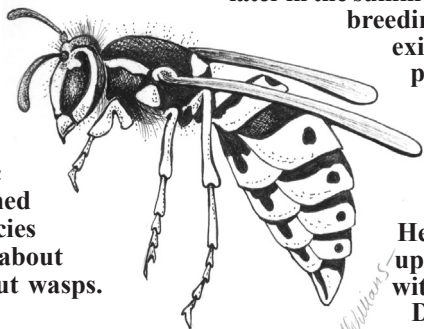
**Don't go near their nests or they will become very defensive. Just step away quickly and don't go back.**

If you swat at them, they will become more aggressive, so leave them alone, and move away. The more you swat the more belligerent they become.

**Don't kill them – a dying wasp emits a chemical to warn others, who will then gather together to see what is going on.**

If you're stung, wash it, put on a cold pack, keep the area clean and dry, and apply calamine lotion or other soothing cream. The pain will go after 24 hours. If you're allergic to them, that is another matter altogether, and I think those people carry anti-histamine with them.

Unless the nest is in your actual house, don't summon The Exterminator. They will be gone by late autumn, and will not return to that nest.



### Working from home?

#### Tips to avoid aches and pains

AS the lockdown began, we found ourselves having to adapt, in no area more so than work. For many of us, working from home has become full time and is looking like it could be part of the new normal. However, unlike a well-organised office, working from home is quite often improvised.

Applying ergonomic principles (the study of the workplace as it relates to the worker) can help to prevent work-related back pain and injury and maintain a healthy back and spine. Office or computer ergonomics can help minimise the risk of neck and back pain, headaches, eye strain and repetitive strain injuries, such as carpal tunnel syndrome. Predicting who will and won't develop back pain is not a science. However, Prevention is better than cure, so here are some tips:

**Move around:** don't sit at your desk for too long without a break to stretch your legs. Walking around encourages the healthy flow of fluid in and around the spine.

**Smart seating:** when sitting, ensure your feet rest flat on the floor and your lumbar spine (lower back) is supported. Your knees should also be below the height of the base of your spine in order to distribute the weight from that area. Also make sure your desk and computer monitor are not positioned too low or too far away, meaning you have to continuously look down or lean forward.

**Core stability:** Proper training of the postural muscles, which subconsciously control and support the spine and torso, is crucial for a healthy back, posture and spine. Yoga, Pilates and regular chiropractic care can help to strengthen the postural muscles.

Ed Groenhardt,

Chiropractor at Cambridgeshire Family Chiropractice in Linton  
Call 07870 568548 for free advice and help during the crisis.

## Anderson Trust 2020 Grant Allocations

THE Anderson Trust was established in 1998 as a result of the sale of Church Cottage in Linton, the former home of Professor Charles and Mrs Mary Anderson.

According to the terms of the Trust Deed, the purpose of the Trust is to promote the Christian religion in and from the Parish of St Mary's, Linton; to sustain the Church of St Mary's and worship therein; to promote education for the benefit of those living in and resorting to Linton, particularly for the benefit of the Church School and of religious teaching in Linton and for any other charitable purpose for the benefit of those living in or resorting to Linton.

Due to the current circumstances, the Trustees were unable to hold their usual meeting but online discussions were held and, after due deliberation, approval was given for the distribution of £9,365 annual interest, received from investments, to the following applicants:

£5000 to the Beacon Youth Trust towards the salary and on costs of a Youth Worker for Linton; £1575 to St Mary's Church towards the purchase of Pew Bibles, hymn books and Godly Play resources; £800 to Linton Infants School for the resourcing of a summer house; £1240 to Linton Infants School PTFA for the upgrade of IT resources; £100 to Tots in Tow for new toys; £200 to Chestnut Playgroup for children's IT tablets; £200 to Granta Grapevine towards the purchase of digital audio players and £250 to Linton Cricket Club towards the purchase of a cylinder mower.

An invitation to apply for 2021 grants will be issued in the November edition of the Linton News.

Gillian Powell, Chair of Trustees,  
893664

### Galloping for NHS workers in London

AFTER the Linton Granta Football Club season was brought to an abrupt end at the hands of Covid-19, six of us started a mini running group to stay in touch and keep spirits high. This has since snowballed into the idea of running 500 miles in a week as a team starting on 25<sup>th</sup> May (Bank Holiday Monday).

The challenge will require great dedication and commitment from all of us with none of us having managed more than 50 miles in a week let alone 100. Our NHS workers show great dedication and commitment day in day out. This is the reason why we are raising funds for UCLH\* who support staff at a range of hospitals in London and are in great need of funds in these desperate times.

Whether it's £5 or £50 please please donate what you can. The 31<sup>st</sup> May should have resulted in the team being tired and hungover returning from their end of season drinks in Newcastle and instead will be exhausted completing the final miles in completion of the challenge.

To donate please go to <https://www.just-giving.com/team/grantagallopers>

Andrew Palmer  
apalmer@cap.education

\*University College London Hospitals

# Marsh Mail



WHILE the College's building has remained largely empty, its staff and students have been busy engaging in remote learning. Teachers have adapted to setting work online and our students have responded well to this challenge. Our Linton Learner attributes of independence and responsibility are coming to the fore at the moment.

As I write this, we are in the throes of making plans to consider how we might be able to safely accommodate small groups of our Year 10 students in school. This is in response to the government's announcement regarding the intention for schools to begin to re-open in a phased way to specified year groups from 1<sup>st</sup> June. We are also making transition plans to consider how best to support Year 6s with their move up to LVC.

This means that the vast majority of our students will continue to be educated virtually until at least the start of the new academic year. While this is disappointing for us all, we recognise that ensuring the health and safety of our students, staff and families is of paramount importance. It will clearly be quite some time before we return to experience the bustle of a thriving and busy school environment.

We also miss being able to open our doors to the College community. The Sports Centre remains closed for the time being and adult education classes and lettings are also on hold. We hope to be able to re-start aspects of our community provision when it is safe to do so. You may have noticed some exercise challenges being posted on the Sports Centre social media accounts.

You may also be interested in following the Linton Learner twitter feed (@LearningatLVC) to see some of the amazing learning outcomes being achieved by our students at home. While we aren't able to teach and interact with the vast majority of our students in person, we continue to be very proud of them. Their resilience, motivation and engagement with their learning at this challenging time is to be celebrated.

Helena Marsh, Executive Principal

## District and County Councillors' Report May 2020

WE hope that you and your families are keeping safe at this difficult time. We are aware of all the good work going on in the villages to support the vulnerable and elderly. Well done and thank you.

**South Cambridgeshire District Council** Do please continue to work with the SCDC Patch Manager, Sarah Grove, who is coordinating the effort in our area. Her contact is: [duty.communities@scambs.gov.uk](mailto:duty.communities@scambs.gov.uk) If emailing Sarah, please put *Patch 1* into the subject line, so that it gets to her faster. Of course, we are both available to help wherever we can. Information is also available at [www.scambs.gov.uk/coronavirus/](http://www.scambs.gov.uk/coronavirus/)

**Cambridgeshire County Council** The County Council has an online hub where with information regarding volunteer support plus help/advice for businesses. [www.cambridgeshire.gov.uk/residents/coronavirus/covid-19-coordination-hub-your-community-needs-you](http://www.cambridgeshire.gov.uk/residents/coronavirus/covid-19-coordination-hub-your-community-needs-you) – a simple online search should also find it.

The County Council is also coordinating the assistance for those individuals who class as shielded so require more support as they have health conditions which restrict their outside movements more seriously. If you know somebody who falls into this category, please let Henry know, to ensure that County is aware of them.

**Remote Working and Voting** Both the County and District Councils are now holding committee meetings, so large decisions will be made again.

**Planning** The planning department at South Cambs continues to function, with most applications being processed by officers in the usual way. More than 90% of planning applications are decided under delegation.

Parish Councils should continue to provide

their comments in the usual way.

It has not been possible to hold Planning Committee meetings or to process applications that parish councils or local members have requested to go to committee. There is a significant backlog of these. We will soon re-start the Planning Committee; the first meeting will be on Wednesday 13<sup>th</sup> May to agree the procedural protocols to allow us to hold meetings remotely. The first proper meeting will be one or two weeks later.

Parish council and member requests for applications to go to committee cannot be processed until a change to the constitution take place to make the delegation process legal. This should happen on 21<sup>st</sup> May. We will then start working through the backlog from Friday 22<sup>nd</sup> May.

Remote working committees is a new process, no doubt there will be difficulties. So please bear with us as we do our best to get things right.

**Community Capital Fund** There is a new funding opportunity available at the County Council called the Community Capital Fund. There is significant funding available for community groups and parish councils to bid for, as the total pot is £5,000,000.

The fund is mainly designed to assist with community engagement and involvement projects, please do take a look at the full set of criteria here [www.cambridgeshire.gov.uk/council/communities-localism/communities-capital-fund](http://www.cambridgeshire.gov.uk/council/communities-localism/communities-capital-fund) – do contact Henry directly for any additional support on this.

**Green Bins** The green bin collections started again as of Monday 4<sup>th</sup> May. However, it will begin with a reduced service. People will be guaranteed one collection per month with the possibility of a second if there is the capacity. Put out your green bin on the usual

# Army Cadet Force

WHILE we are still in lockdown, Linton Army cadets have reverted to virtual training so we as a detachment can stay in contact and keep training going.

The cadets are using their exercise period in the day to achieve their physical period for their DofE.

We have a cadet using this time to learn to sign as her skill for DofE, so Lcpl Carpenter can use it to teach others to sign. Linton detachment would like to wish that everyone stays safe in this time and protects our NHS.

Staff Rudderham SA  
DC Linton detachment  
Army Cadet Force



SOUTH Cambs District Council states on their website that they currently have a backlog for processing applications and are currently processing applications that are dated from 11<sup>th</sup> March 2020. They apologise for this delay.

**20/01133/TTCA, 9A Meadow Lane, T1 - Pine** - Clean through crown, remove deadwood and damaged branches. Reduce limb by approx.2m -3m growing towards cottages. Decided

**20/01179/ TTCA, 14 High Street**, Changes to a cherry tree, Decided

**20/01198/TTCA, 10A High Street, T1** Apple Shorten lateral branches by 1-1.5m, remove deadwood, spurs, crossing & chafing branches & epicormic growth

**20/01715/CL2PD, 11 Balsham Road**, Certificate of lawful development for the addition of a flat roof dormer to existing loft conversion

**20/01833/HFUL, 3 Lonsdale**, Two storey side extension plus garage and loft conversion

## Councillors' report continued

green bin day. They will definitely be collected once and, if possible, twice in the month.

SCDC now operates with fewer people in the cab due to the virus.

### Household Recycling Centres

The County Council have reopened the centres on 11<sup>th</sup> May. There will be restrictions in place. Full details here [www.cambridgeshire.gov.uk/news/re-opening-of-household-recycling-centres](http://www.cambridgeshire.gov.uk/news/re-opening-of-household-recycling-centres)

### Business Relief Grants

A plea to everyone who either runs a business or knows someone that does. Ask if they have applied for financial business relief from the District Council. If they qualify, there is a potential to apply for up to £25,000. More info can be found on the SCDC website, by emailing [businessgrants@scambs.gov.uk](mailto:businessgrants@scambs.gov.uk) or by contacting John and Henry.

Councillors John and Henry Batchelor

## Help for businesses in Linton

WE are exceedingly fortunate in this village to have so many successful and diverse small businesses. The ones that are obviously visible are the pubs and retail outlets on the High Street. It is gratifying to see how some of them have been able to find new ways to generate income and the way they are being supported by parishioners. If you can, please continue to support them by using their take-aways and food boxes. The Linton Community Help Team has recently compiled a list of these services and delivered these within Linton.

The businesses that are going to struggle are the likes of the *Flower Boutique*, the so recently opened *You Beauty* in the old Post Office, *Home* (opposite the Co-Op), *Small Gifts*, *AC Tournants* - the electrical Shop, *The Nantais Gallery*, *the Chiropodist*, *Bilsons the Optician*, *the Waggon and Horses*, *Lizzies Health & Beauty Salon* and of course the hairdressers: *J&S Hair*, *Mops*, *Boyz 2 Men* and *Chickz Next Door*, as these businesses have been forced to close almost entirely. Although, some, such as *Small Gifts*, have recently opened up online as a response to the COVID-19 crisis. These are only the businesses in the centre of the village, not to mention the businesses at the Grip Industrial Estate including The Spotted Giraffe, Linton Fitness and Stictly Dance Studio plus 26 additional Limited Companies registered at the Grip. There are also other non-retail in various locations, for example, opposite LVC and up Station Road., some of whom may be still operating where they can.

Hopefully, for all of them, trading or not, there is Government help in the form of **Business Relief GRANTS** (not loans so it won't have to be paid back).

South Cambs District Council (SCDC) has a dedicated team responsible for identifying and distributing these grants.

• **Small Business Grant Fund:** You must be paying little (up to £15,000) or no business rates (because of small business rate relief (SBBR), rural rate relief (RRR) and tapered relief) and have been trading on the 11<sup>th</sup> March 2020. Unfortunately, if you are only paying rent and your landlord pays the business rates or you're working from home you are not eligible. This is available even if you are still able to trade in some way.

• **The Retail, Hospitality and Leisure Grant Fund:** Offers grant funding of up to £25,000 for retail, hospitality and leisure businesses. Businesses in these sectors with a rateable value of under £15,000 will receive a grant of £10,000. Businesses in these sectors with a rateable value of between £15,001 and £51,000 will receive a grant of up to £25,000.

If you think you are eligible and you haven't been contacted then please, please go to the SCDC website for more information. You can e-mail [businessgrants@scambs.gov.uk](mailto:businessgrants@scambs.gov.uk) and also our District Councillors, John and Henry Batchelor would also be happy to assist. The team at SCDC are working very hard to support us.

We must also thank the larger organisations such as the Co-Op for continuing to operate and make internal store changes to help with social distancing (including the latest one-way system). Good luck to all these businesses – hang in there. You have the support of the village.

Finally, I am writing this on VE Day and I think it is wonderful to see so many homes hanging out flags and bunting. Well done to everyone who did this, it shows a wonderful community spirit within Linton.

Cllr Mannassi

## CSET Scheme 14 - The A1307 and the proposed westbound bus lane

THIS virtual meeting with Mott MacDonald, consultants for GCP/City Deal, was to progress the plans for bus priority along the A1307, focusing on the proposed westward bus lane from Bartlow Road to The Grip.

This requires buying land south of the A1307 to accommodate a 4m width bus lane raised 2m above farm land (but might be a shared cycle lane for the rest of the day).

**LPC comments from Cllrs Kate Kell and Enid Bald included:**

- That this would benefit only four X13 buses in morning "rush hour"
- Bus routes through Linton might be lost - we know it is difficult for them to get through - if so, it is hard for some residents to reach the A1307 bus stops.
- Area of bus lane prone to flooding.
- Involves loss of mature hedges and trees and no extra planting for sound reduction.

- Impact on the valued landscape and environment.
- Safety concerns where bus lane passes Garage access
- What benefit would this be to Linton or the villages? Cost-benefit data requested.
- What would help bus flow are the signage, road markings, parking improvement (including out of village parking area), etc, suggested in LPC submission to MHII.
- To note s106 money from housing development has already been earmarked for GCP schemes. Perhaps there are better ways to use this? We would like to know your thoughts on this proposed scheme. If you could please send your comments via email to: [greatercambridge@public.govdelivery.com](mailto:greatercambridge@public.govdelivery.com) copying in the office on: [enquiries@linton-pc.gov.uk](mailto:enquiries@linton-pc.gov.uk).

Cllr Enid Bald

## Council business

DUE to the COVID-19 pandemic there have had to be many changes to both businesses and Local Authorities and how they are run.

The introduction of a new bill which came into force on the 4<sup>th</sup> April 2020 has resulted in some temporary flexibility in the pre-existing regulations, making it easier for Parish Councils to operate.

Included in this is the removal of the requirement that a Parish Council MUST hold an Annual Parish Council meeting this year in May. At which the Chairman, Vice-chairman and Chair of Committees, as well as committees themselves are elected for the forthcoming year.

This has allowed an opportunity for the Parish Council to decide if they would like to defer this meeting until May 2021 and roll over the current elected positions.

At the Extra-Ordinary Parish Council meeting held on the 7<sup>th</sup> May 2020, Linton Parish Council made the decision that it was in the best interest of the Parish to continue this year with the same elected members of Council in these positions.

This means that until May 2021, the below representatives in their current positions shall continue.

- \* **Chairman**– Ms Merrie Mannassi
- \* **Vice-Chairman**– Mr John Bald
- \* **Chairman of the Finance Committee** – Mr Paul Poulter
- \* **Chairman of the Planning Committee** – Mrs Enid Bald
- \* **Chairman of the Personnel Committee** – Mr Chris Hine

The Council Representatives, Committee Representatives/ Working Group and Advisory Committees shall also remain the same at this point.

Clerk

## Planning Updates for Linton - April 2020

PLANNING applications and issues do not cease despite the lockdown - although meetings from home do have compensations, and no bookshelf view is safe!

**1, Horseheath Road S/0793/18/COND3/4/14/15-** further discharge of conditions applications, involving trees, landscaping, surface water drainage and drains - LPC raised several concerns.

**Former Spicers site, Sawston Bypass, Huawei, S/0158/20/FL** - We commented on aspects affecting Linton - the transport/traffic issues and provision of water from our stressed aquifers and chalk stream.

**Bartlow Road** - Objections raised against link to sewer on Bartlow road, contrary to specific planning conditions. Other conditions remain unresolved, so work cannot progress.

Cllr Enid Bald

# Parish Council Minutes

ABBREVIATED minutes of the extra-ordinary meeting of Linton Parish Council (LPC) held on Thursday 7<sup>th</sup> May 2020, via remote meeting.

The meeting was opened at 7.42pm.

**Apologies for Absence:** Cllr Amy Smith

**Councillors' Declarations of Interest** None

**Councillor Vacancies:** There are currently five vacancies available for co-option. This is as the recent new councillor applicant has not yet been able to formally sign the paperwork due to the COVID-19 lockdown.

**Chairman's Comment:** Thanks to the Clerk and Assistant Clerk for getting set up and working from home. Thank you to the Clerk for the recent Parish Council Matters efforts in the absence of a full Parish Council meeting.

Thank you to Cllr Enid Bald for continuing all her hard work throughout the COVID-19 pandemic and ensuring projects are all continued.

**Open Forum for Public Participation:** A resident spoke regarding how important it is to shop locally and that the village directory is quite out of date so this would be an ideal time to improve this and see if this can be redone and re-issued. A hard copy for the directory could then be printed to assist in support for those residents who are not able to have access to the internet.

The Parishioner requested a Linton Directory Facebook page and offered their services to assist in the management of this from an administrative side. Cllr John Bald offered his services to the resident to assist in the production, whilst requesting information from Linton News, as it was believed that this was originally produced by the Linton News.

Cllr J Bald and the resident to draft this and bring back to a future meeting.

**To Approve minutes of the Parish Council meeting held on the 20<sup>th</sup> February 2020:** (to be agreed in the meeting and signed at a later date). The minutes were proposed by Cllr Chris Hine, they were seconded by Cllr Paul Poulter, put to a vote. **Agreed.**

**Matters Arising/Clerk's Report:** Update on Grants payments for the financial year 2020/2021. These are being made via BACS payments and shall be leaving the account shortly, letters confirming payments will also be going out over the course of the next few days. **Noted.**

**Planning Matters: Consideration of the Planning Committee minutes from the Extra-ordinary meeting of the 14<sup>th</sup> April 2020 and the Extra-ordinary Planning Committee meeting held on 30<sup>th</sup> April 2020.** These are available on the Parish Council website in the Councillors section under meeting documents. **Noted.**

**Horseheath Road Update on the Planning application for Horseheath Road, application reference S/4418/19/RM, for the erection of 42 dwellings including the provisions of 0.45ha for allotments on the land south of Wheatshaf Barn, Horseheath Road, following the Planning Committee meeting of Linton Parish Council.** The Council noted that they felt the developers were very approachable and had tried to speak with LPC and address

areas that LPC have raised.

There are still a few things to be sorted out and there are concerns over whether SCDC had the right to make decisions regarding the planning application on land that they owned.

District Cllr John Batchelor spoke regarding the ransom strip and advised that SCDC do not actually seem to have a confirmed answer regarding the boundary line at this point.

**Comments from the Parish Council regarding the recent application for a food van located at the car park for the Waggon and Horses pub on the High Street.** Cllr John Bald proposed that LPC should oppose this application as this will not add to the village but may well be a source of problem. Cllr Lee Gardner seconded this, and it was put to a vote, six for, two against and one abstention. **Motion carried.** LPC shall object.

**Bartlow Road updates on planning applications S/4550/19/DC & S/4551/19/DC of application S/1963/15/OL.** The first RM application was refused by SCDC and taken to appeal, where it was thrown out by the Secretary of State.

The second RM application was granted by SCDC despite the effect on the valued landscape, LPC asked for this to be called in but there has been little response. Cllr John Batchelor advised that this is because it is two different authorities who have different views. There are all sorts of issues as to whether they can meet the conditioning on the site, such as the drainage.

They have also started to carry out drainage work on site without the conditions being signed off, they do not appear to be acting lawfully with regards to this application. These issues were raised with District Cllr John Batchelor who advised he was aware of this and it is being reviewed.

**Updates on TTRO for widening of footpath and installation of foul water sewer on Bartlow Road.** One issue which came up recently was regarding the sewers, the applicants were specifically told they could not connect to a manhole through the conditioning on the application S/1963/15/OL and they have now submitted a Temporary Traffic Regulation Order (TTRO) to allow for them to do this work.

This is another condition that has not been met and was specifically conditioned against. They have also started to do drainage work on site without the conditions being signed off, they do not appear to be acting lawfully with regards to this application.

**Consideration of email received from Few's Lane Consortium. Correspondence item May 23 refers. proposal of;**

**Joining Knapwell pre-action letter.**

Cllr Enid Bald proposed that LPC agree to do the pre-action letter, there was no seconder. **This motion was not carried.**

**Become a member of the Consortium by buying a share of Consortium stock for £1.00.** Cllr John Bald proposed LPC do not do this, Cllr Enid Bald seconded, put to a vote and unanimously agreed. **Motion Carried.**

**District & County Councillors' Reports & Business.** District and County Cllr Henry Batchelor advised that the County Council

are reopening the recycling centres, Linton's closest is Thriplow. These are re-opening as of Monday 11<sup>th</sup> and there will be social distancing in place.

The County Council are applying for a TTRO to install average speed cameras between Linton and Horseheath, this has been provided to LPC to comment.

**Monthly Finance Matters: Membership Renewal and Funding requests**

**Correspondence items March 15 and May 26. SLCC notification to renew membership at a fee of £180.00.** Cllr Chris Hine proposed, Cllr Paul Poulter seconded, put to a vote seven for, none against and two abstentions. **Motion Carried.**

**Correspondence item March 54. CAPALC membership renewal request for 2020/2021 at a cost of £788.27.** Cllr Paul Poulter proposed, Cllr Chris Hine seconded, put to a vote unanimously agreed. **Motion carried.**

**Consideration of the Clerk's request to allow the Assistant Clerk access to the online banking system, to allow for payments to be processed should the Clerk be off due to illness.** This would allow for the payment of contractors etc if the Clerk is off or incapacitated for any reason. Verbal update from the Clerk. Cllr Enid Bald proposed, Cllr Kate Kell seconded, put to a vote, **unanimously agreed.**

**Agreement of Payments over £5,000.00**

**Invoice 36/20 from Linton Village Hall Trustees Committee to an amount of £7,685.00 to cover 2020/2021 rent for the offices based at Linton Village Hall.** Cllr Brian Cox proposed Cllr Paul Poulter seconded put to a vote, unanimously agreed. **Motion Carried.**

**Retrospective decision regarding the renewal of Zurich Insurance at a cost of £5,476.16.** Cllr Merrie Mannassi Proposed, Cllr John Bald seconded, put to a vote, unanimously agreed.

**Motion Carried.**

**Processes, protocols and restrictions. Open discussion and consideration of which changes, if any, may be necessary to allow for a continuation of business throughout the pandemic. This item was deferred to the next meeting.**

**Consideration of offering Financial Assistance to the Linton Community Help volunteer group, clubs and organisations or small local businesses as support throughout the pandemic. This item was deferred to the next meeting.**

**Re-adoption for the Standing Orders for 2020/2021 including the amendment due to COVID-19.** To correct Madam chairman to 'Chairman'. Proposed by Cllr John Bald proposed, Cllr Lee Gardner seconded, unanimously agreed. **Motion Carried.**

**Consideration of whether to hold the Annual Parish Council meeting in May 2020 via video conferencing, including the re-election of the chairman, vice-chairman and committee chairs or if this should be postponed until May 2021.** Cllr Enid Bald proposed this is rolled over, Cllr Kate Kell seconded, put to a vote, agreed. **Motion Carried.**

**The meeting was followed by a confidential section and closed at 9:05pm.**